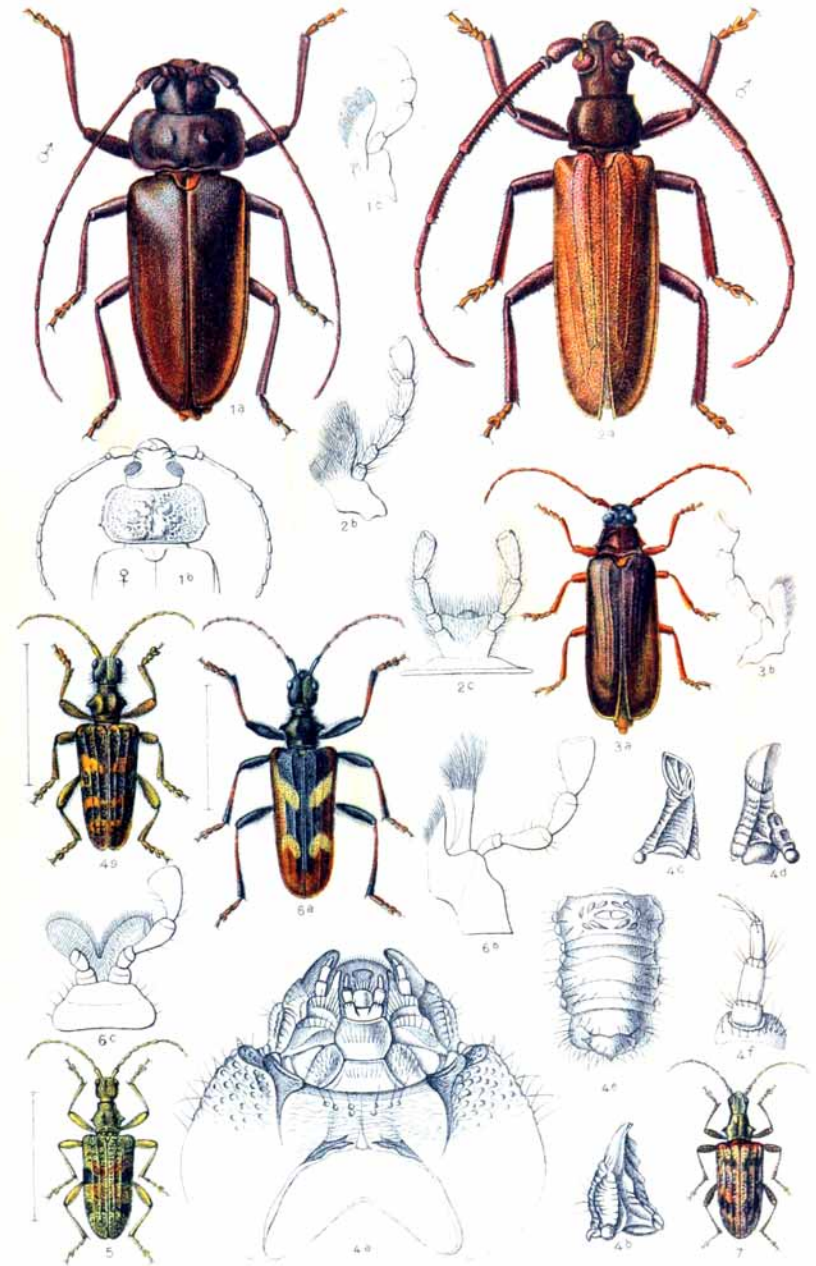
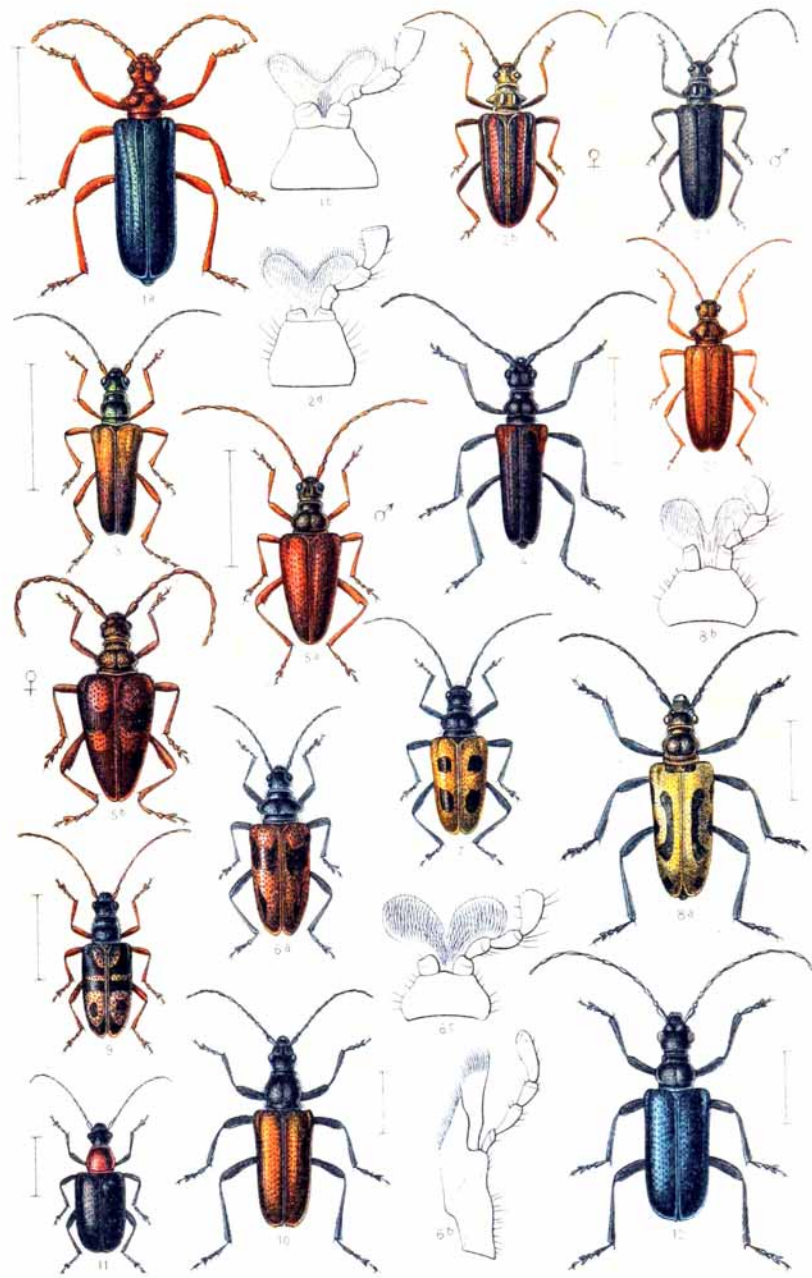


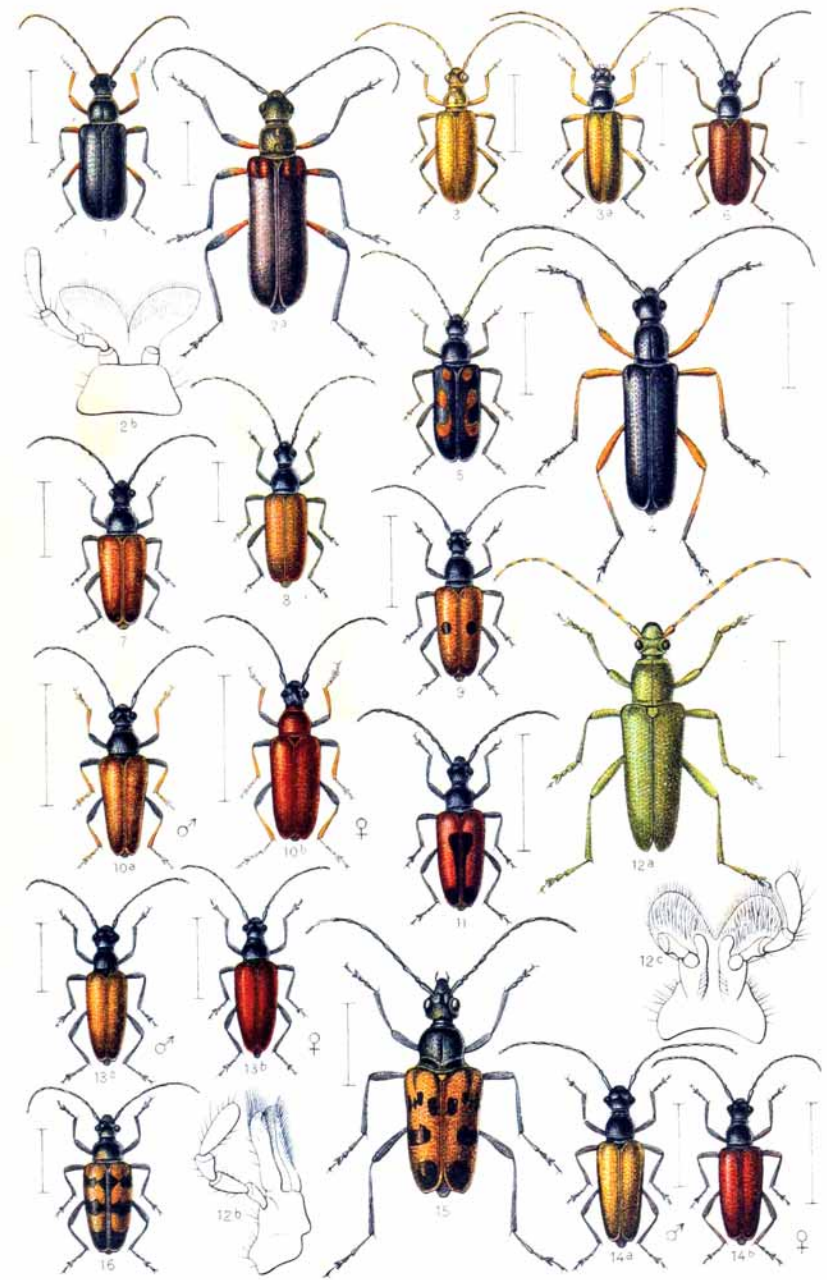
1. *Spondylis buprestoides*, 2. *Prionus coriarius*.



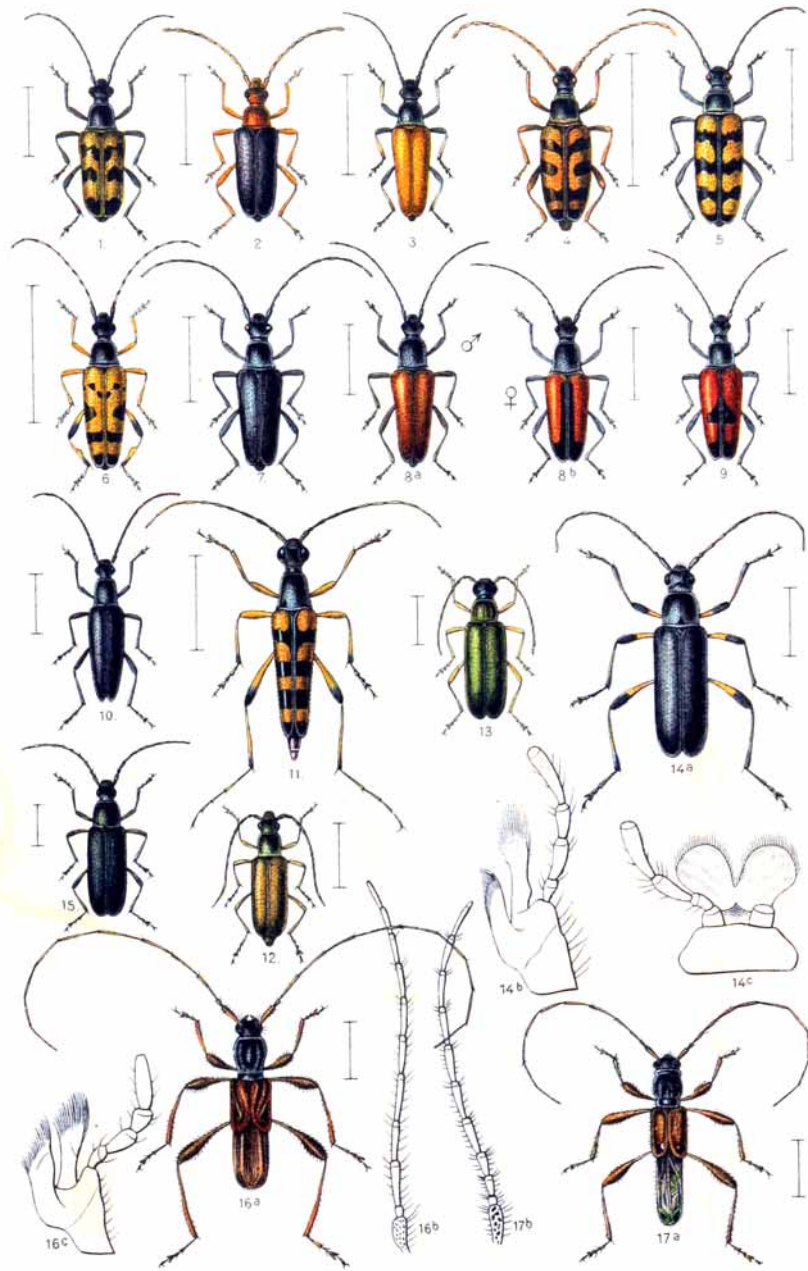
1. *Ergates faber*, 2. *Aegosoma scabricorne*, 3. *Tragosoma depsarium*, 4. *Harpium sycophanta*, 5. *mordax*, 6. *Rhagium bifasciatum*, 7. *Harpium inquisitor*.



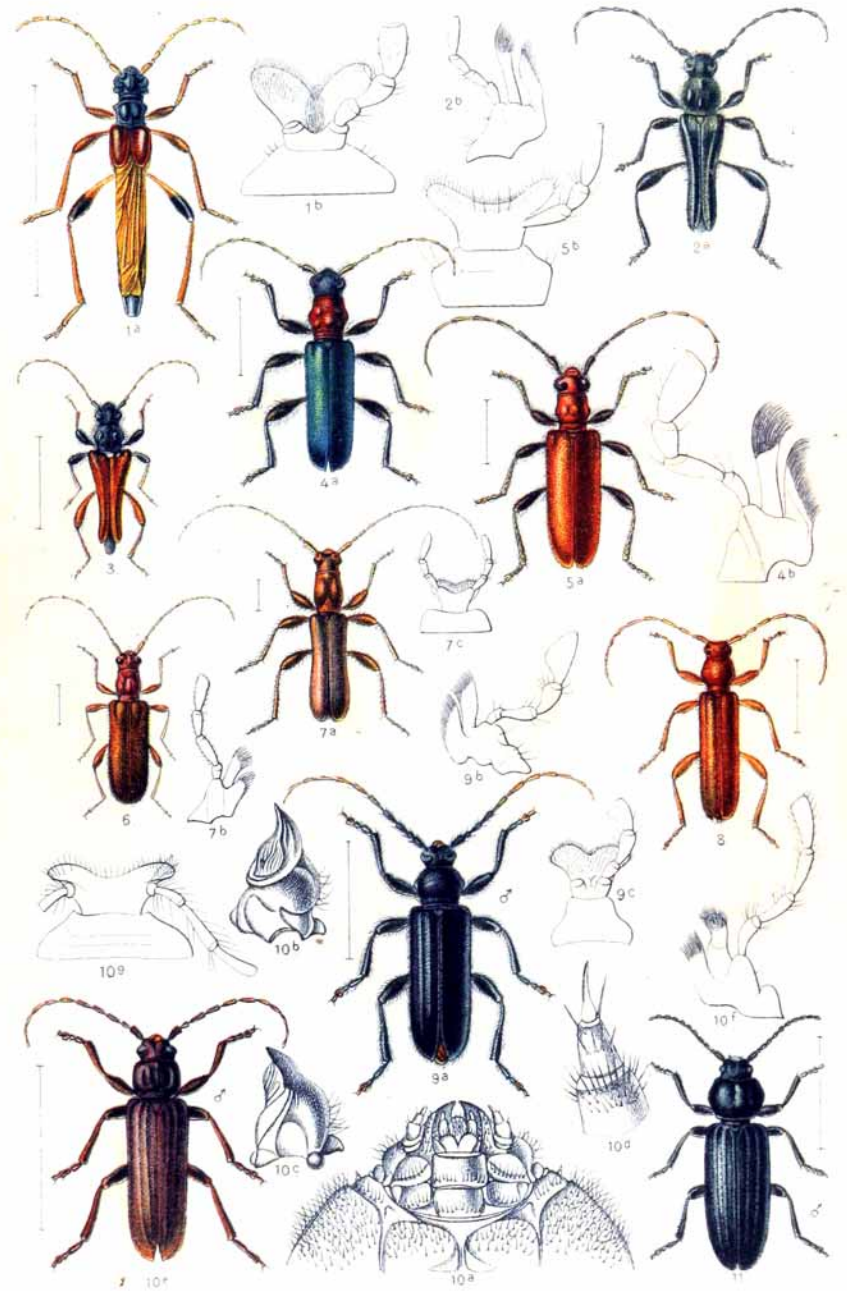
1. *Rhamnusium bicolor*. 2. *Oxymirus cursor*. 3. *Stenochorus meridianus*.
 4. *quercus*. 5. *Acimerus* Schäfferi. 6. *Pachyta lamed*. 7. *quadrifaculata*.
 8. *Evodinus interrogationis*. 9. *clathratus*. 10. *Acmaeops pratensis*. 11. *collaris*.
 12. *Gaurotes virginea*.



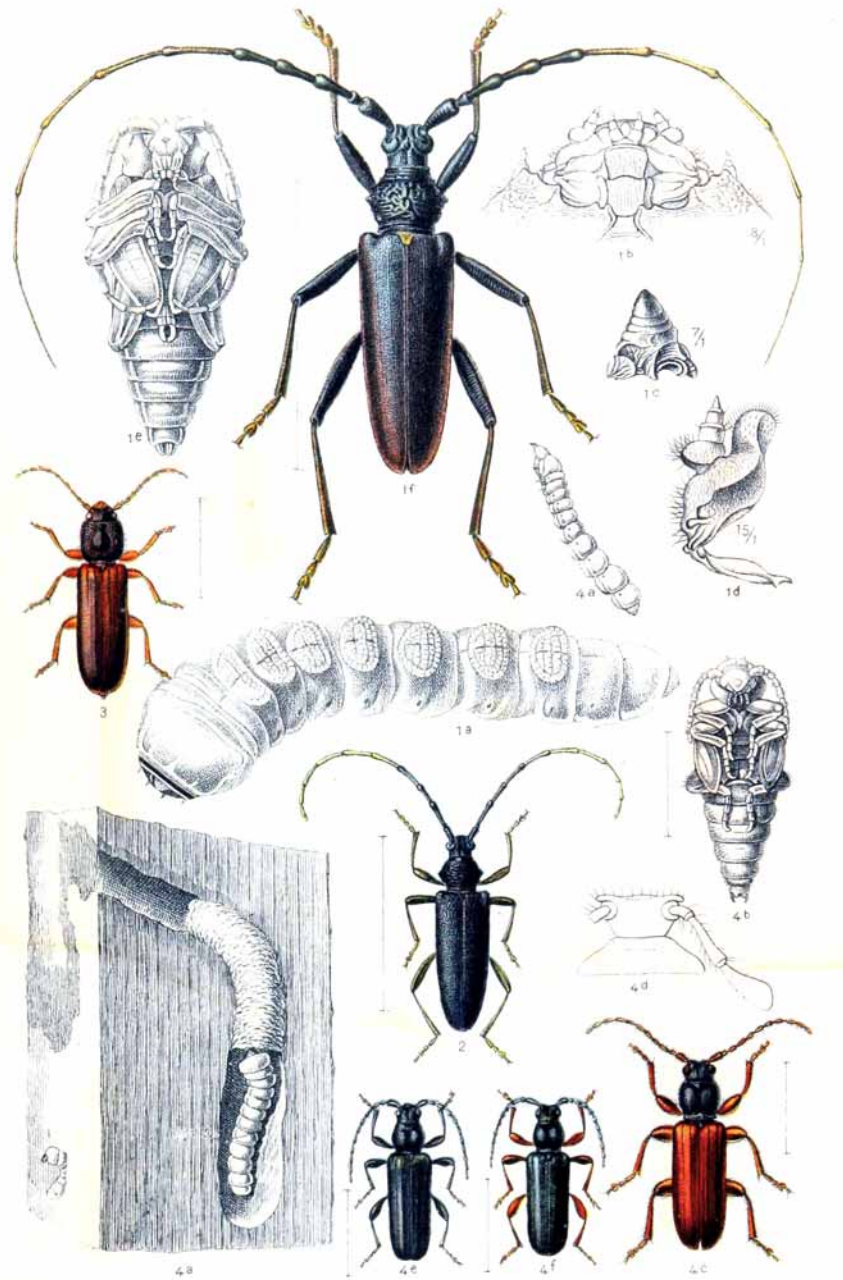
1. *Cortodera femorata*. 2. *humeralis*. 3. *Pidonia lurida*. 3a. v. *Ganglbaueri*.
 4. *Leptura rufipes*. 5. *sexguttata*. 7. *fulva*. 8. *maculicornis*. 9. *tesserula*.
 10. *rubra*. 11. *cordigera*. 12. *virens*. 13. *sanguinolenta*. 14. *dubia*. 15. *cerambyciformis*. 16. *erratica*.



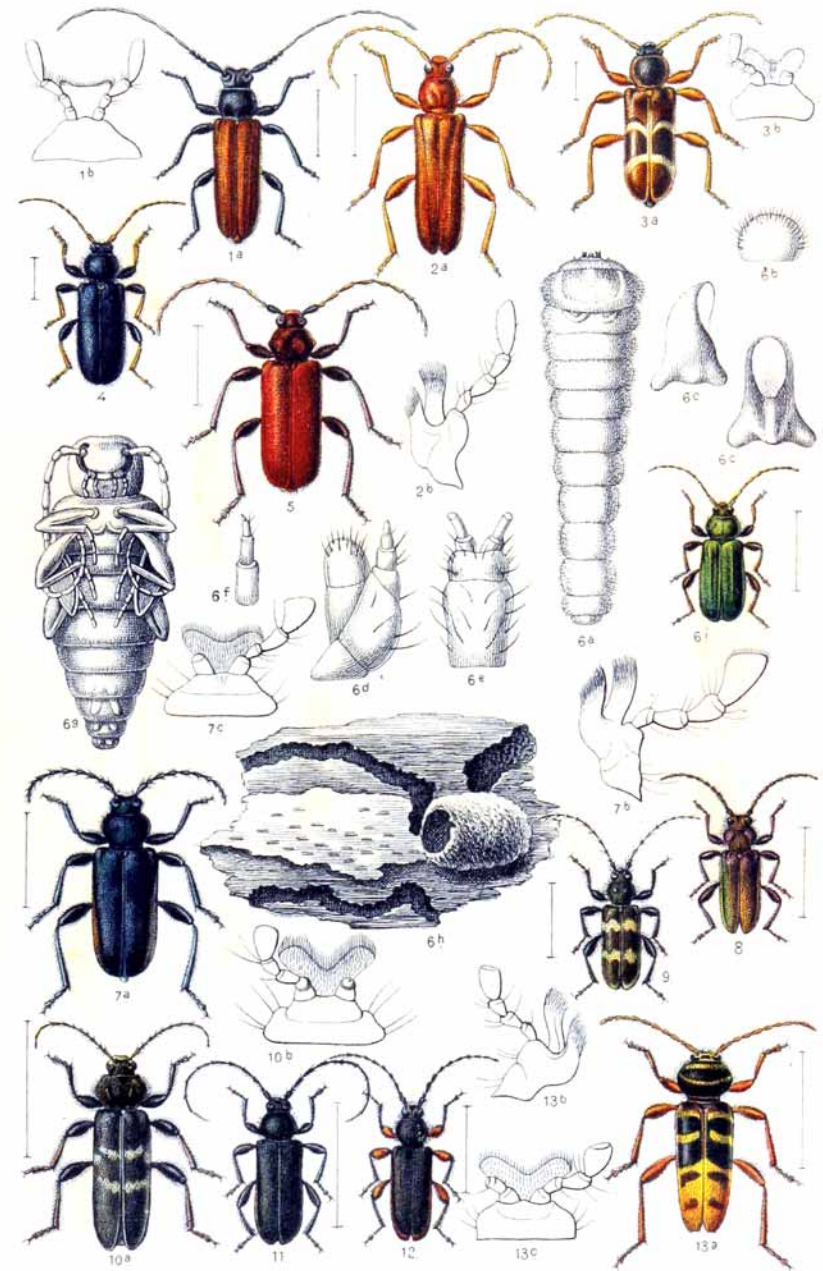
1. *Leptura sexmaculata*. 2. *Strangalia revestita*. 3. *pubescens*. 4. *aurulenta*. 5. *quadrifasciata*. 6. *maculata*. 7. *aethiops*. 8. *melanura*. 9. *bifasciata*. 10. *nigra*. 11. *Typocerus attenuatus*. 12. *Alosterna tabacicolor*. 13. *Grammoptera ustulata*. 14. *variegata*. 15. *ruficornis*. 16. *Caenoptera minor*. 17. *umbellatarum*.



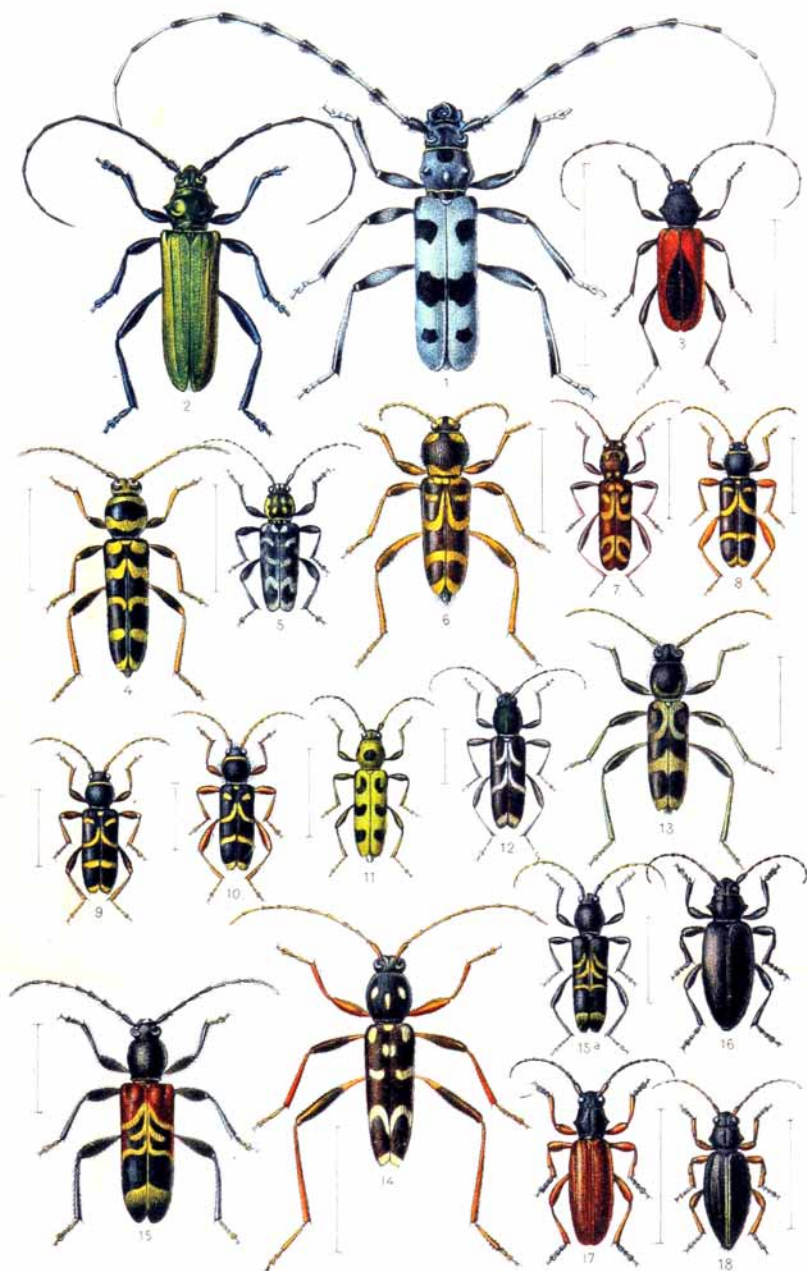
1. *Necydalis maior*. 2. *Stenopterus ater*. 3. *rufus*. 4. *Cartallum ebulinum*. 5. *Obrium cantharinum*. 6. *brunneum*. 7. *Gracilia minuta*. 8. *Axinopalpis gracilis*. 9. *Saphanus piceus*. 10. *Criocephalus rusticus*. 11. *Asemum striatum*.



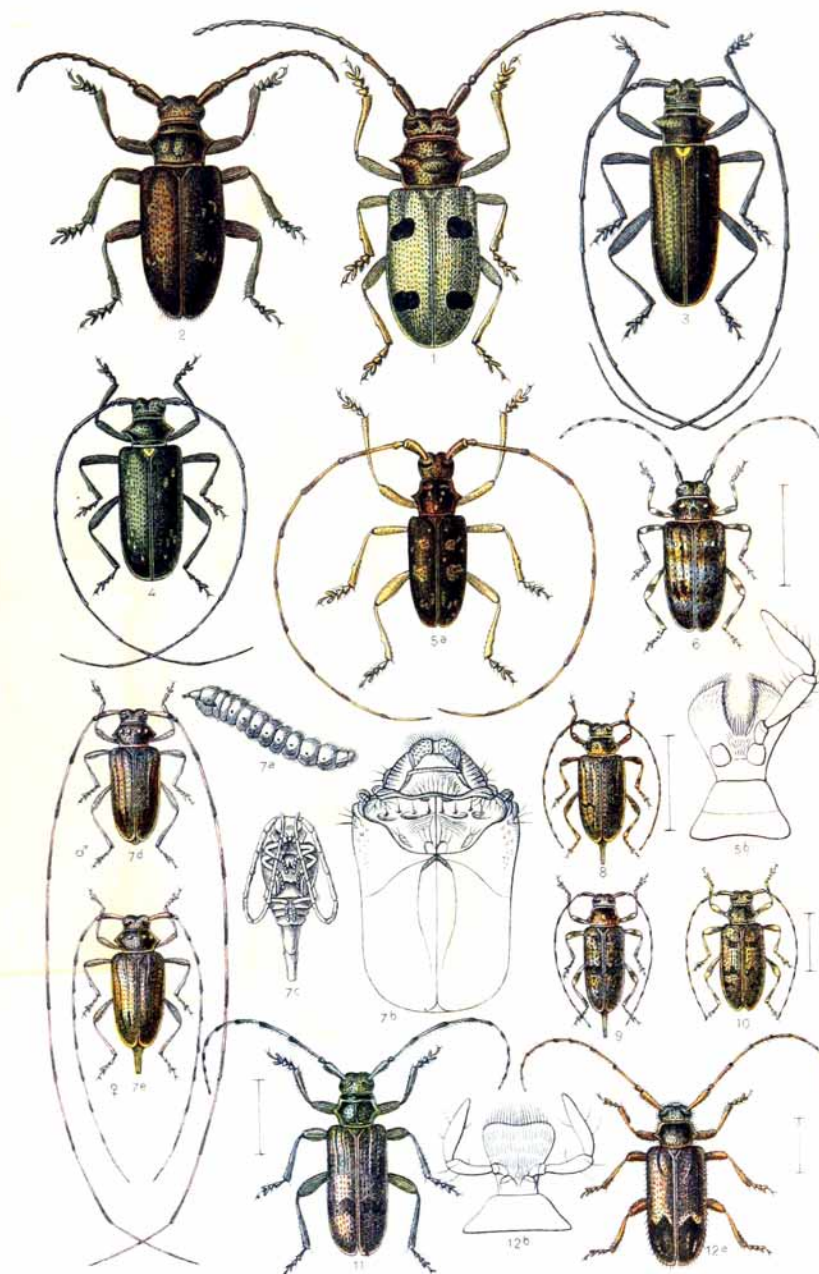
1. *Cerambyx cerdo*, 2. *Scopolii*, 3. *Nothorrhina muricata*, 4. *Tetropium castaneum*.



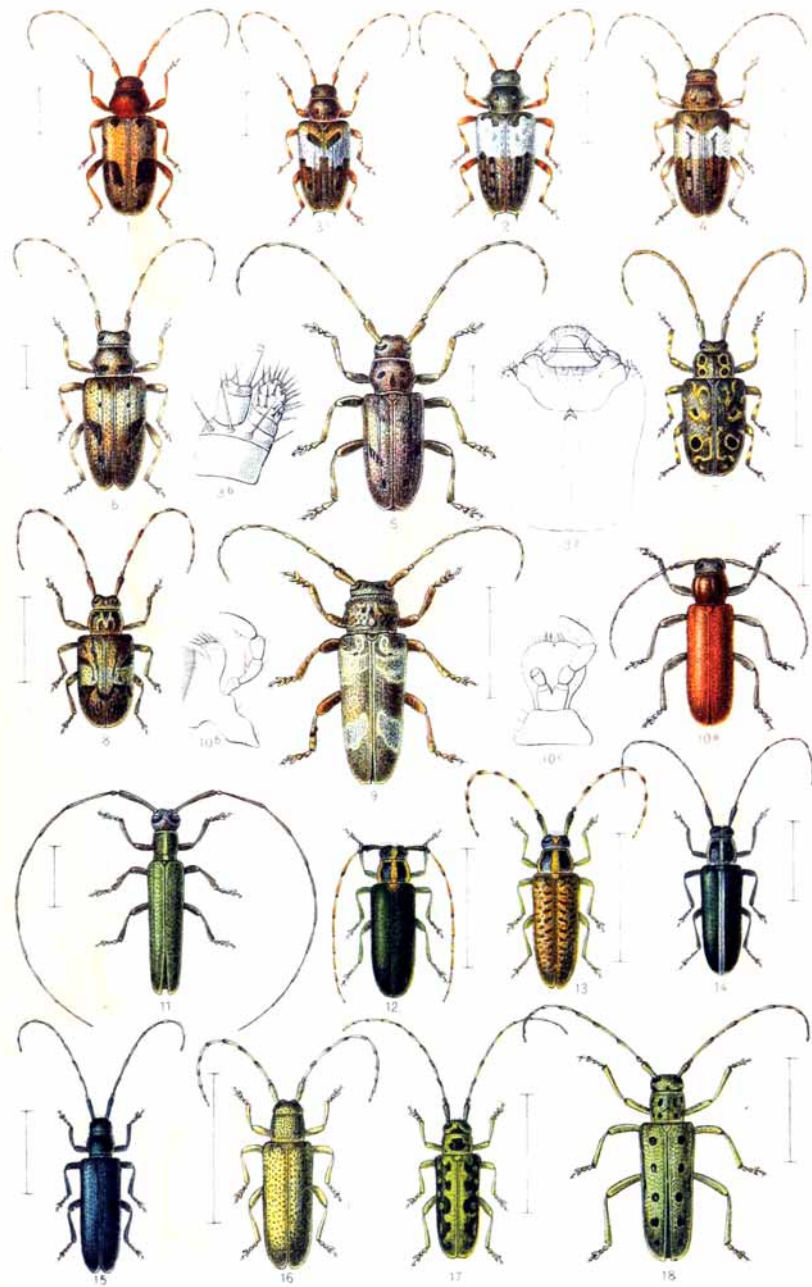
1. *Anisarthron barbipes*, 2. *Phymatodes Kollari*, 3. *alni*, 4. *rufipes*, 5. *Pyrrhidium sanguineum*, 6. *Callidium aeneum*, 7. *violaceum*, 8. *coriaceum*, 9. *Semanotus undatus*, 10. *Hylotrupes bajulus*, 11. *Rhopalopus clavipes*, 12. *femoratus*, 13. *Plagionotus detritus*.



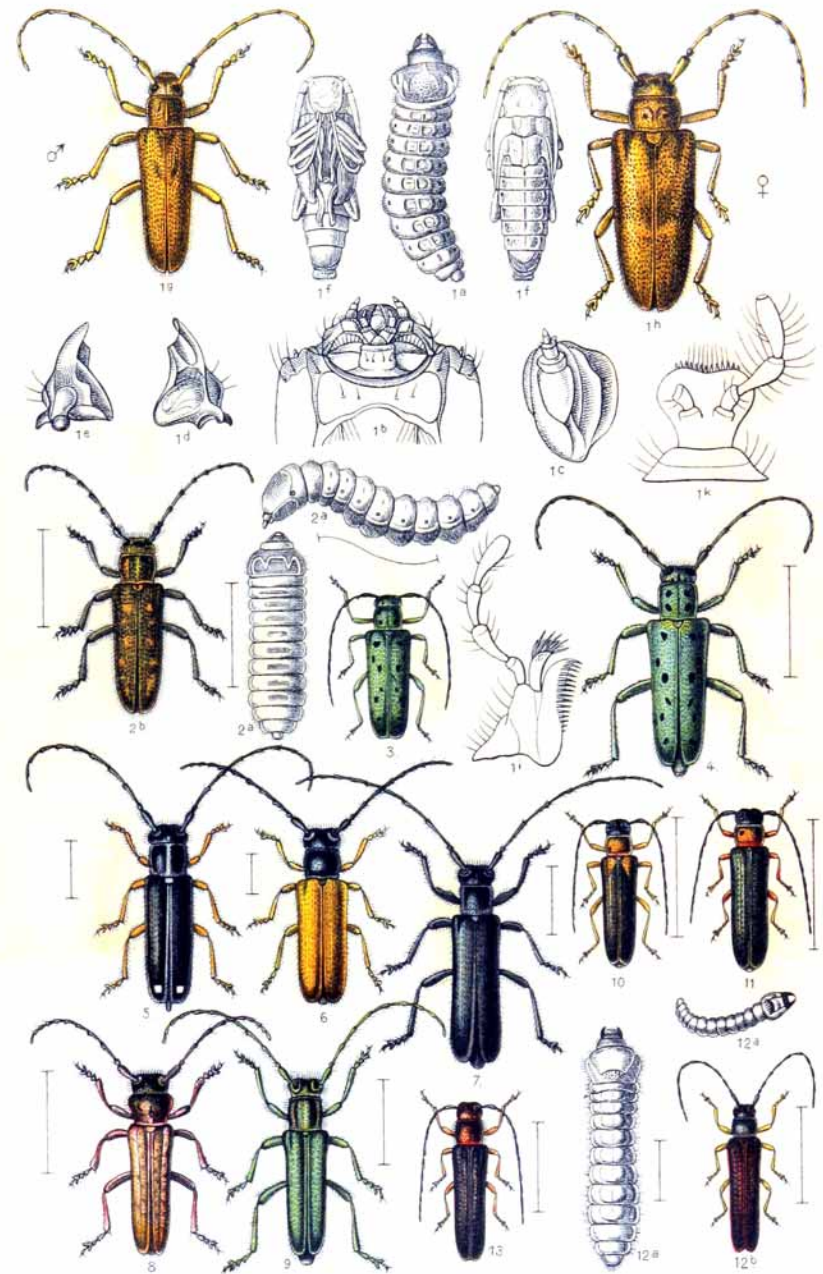
1. *Rosalia alpina*. 2. *Aromia moschata*. 3. *Purpuricenus Kaehleri*. 4. *Plagi-notus floralis*. 5. *Xylotrechus rusticus*, 6. *arvicola*. 7. *Clytus tropicus*, 8. *arietis*, 9. *lama*, 10. *rhamni*. 11. *Clytanthus Herbsti*, 12. *sartor*, 13. *figuratus*, 14. *speciosus*. 15. *Anaglyptus mysticus*, 15a. v. *hieroglyphicus*. 16. *Dorcadion aethiops*, 17. *fulvum*, 18. *pedestre*.



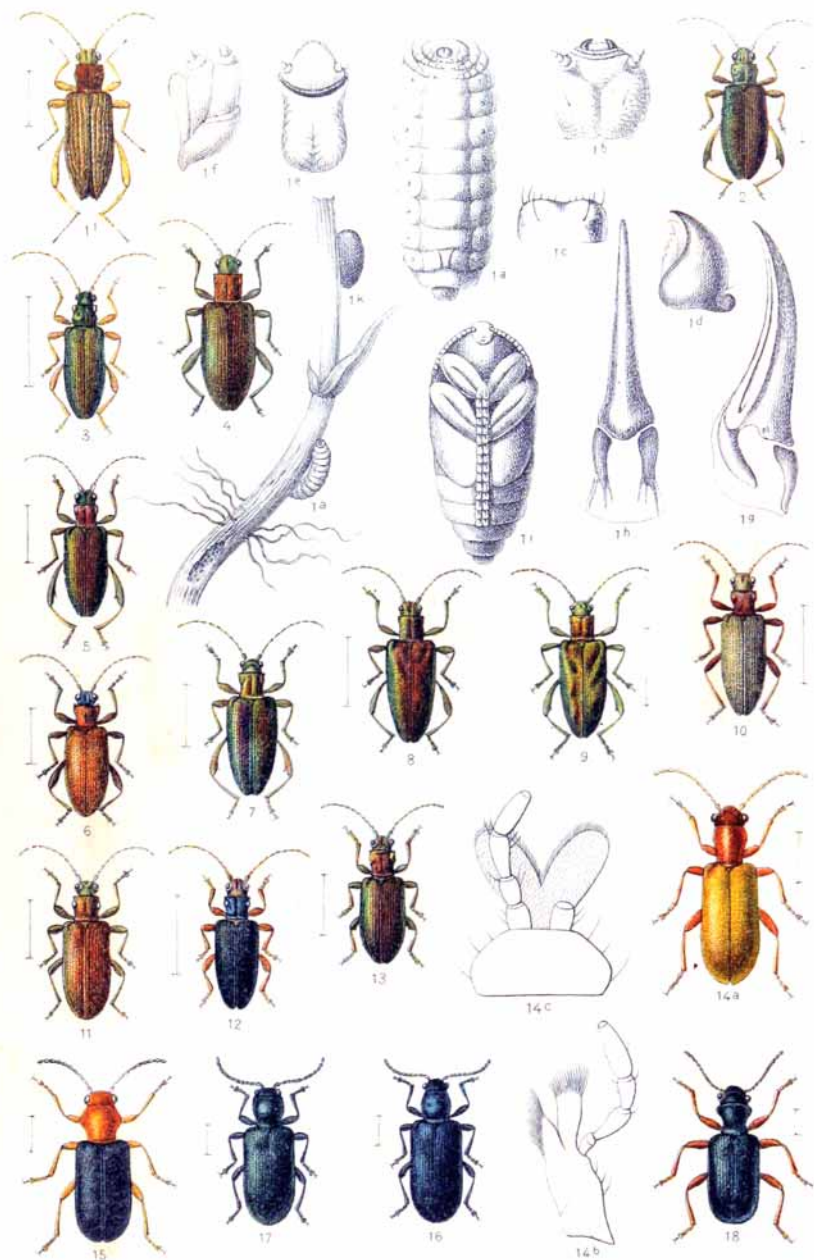
1. *Morimus iunereus*. 2. *Lamia textor*. 3. *Monochamus sartor*. 4. *sutor*, 5. *galloprovincialis*. 6. *Acanthoderes clavipes*. 7. *Acanthocinus aedilis*. 8. *reticulatus*, 9. *griseus*, 10. *Liopus nebulosus*. 11. *Hoplosia fennica*. 12. *Exocentrus adspersus*.



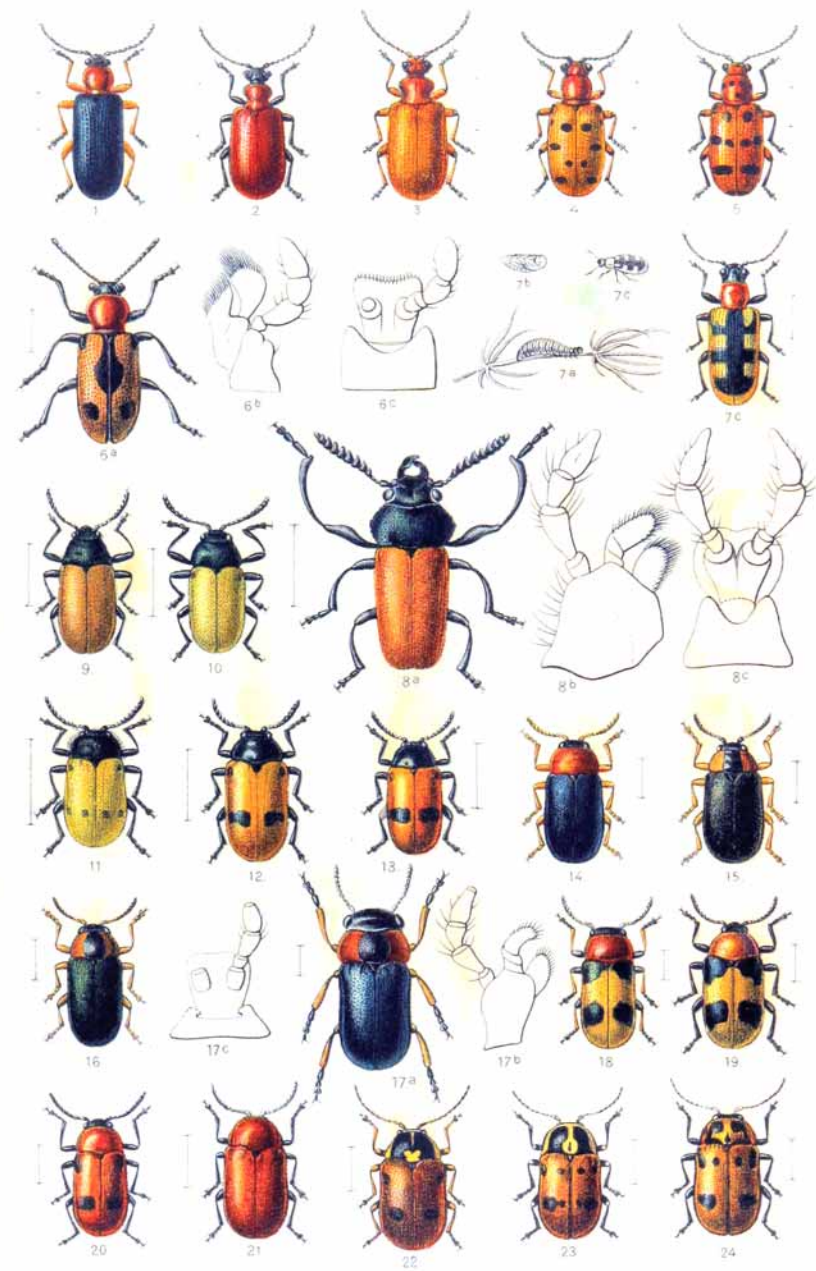
1. *Exocentrus lusitanus*. 2. *Pogonochaerus hispidulus*, 3. *hispidus*, 4. *fascicularis*, 5. *decoratus*, 6. *ovatus*, 7. *Haplocnemía curculionides*, 8. *nebulosa*, 9. *Niphona picticornis*, 10. *Anaesthetis testacea*, 11. *Calamobius filum*, 12. *Agapanthia asphodeli*, 13. *Dahli*, 14. *cardui*, 15. *violacea*, 16. *Saperda similis*, 17. *scalaris*, 18. *perforata*.



1. *Saperda carcharias*, 2. *populnea*, 3. *octopunctata*, 4. *punctata*, 5. *Menesia bipunctata*, 6. *Tetrops praecusta*, 7. *Stenostola ferrea*, 8. *Phytoecia scutellata*, 9. *coerulescens*, 10. *Oberea pupillata*, 11. *oculata*, 12. *linearis*, 13. *erythrocephala*.



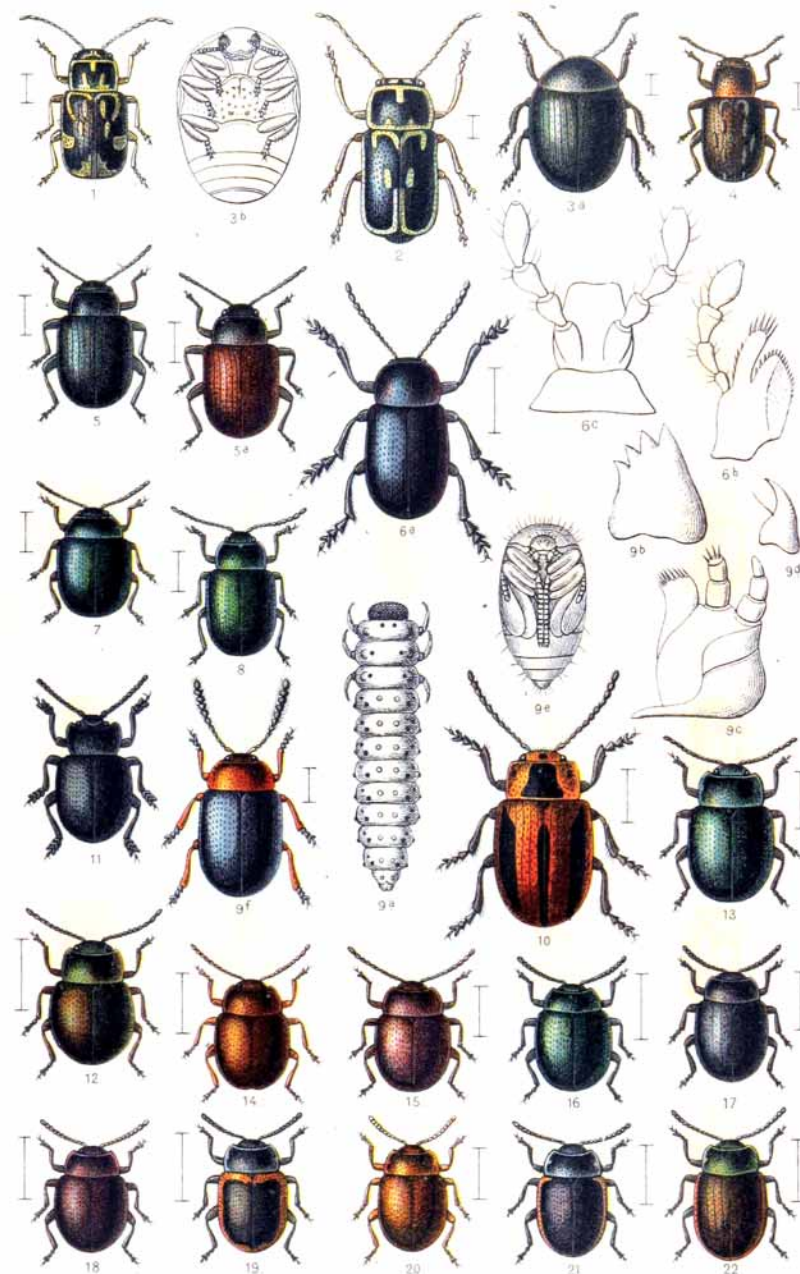
1. *Macroplea appendiculata*. 2. *Donacia crassipes*. 3. *clavipes*. 4. *semicuprea*. 5. *dentata*. 6. *fennica*. 7. *aquatica*. 8. *marginata*. 9. *bicolora*. 10. *cinerea*. 11. *Plateumaris sericea*. 12. *braccata*. 13. *consimilis*. 14. *Orsodacne cerasi*. 15. *Zeugophora scutellaris*. 16. *Lema Erichsoni*. 17. *cyanella*. 18. *tristis*.



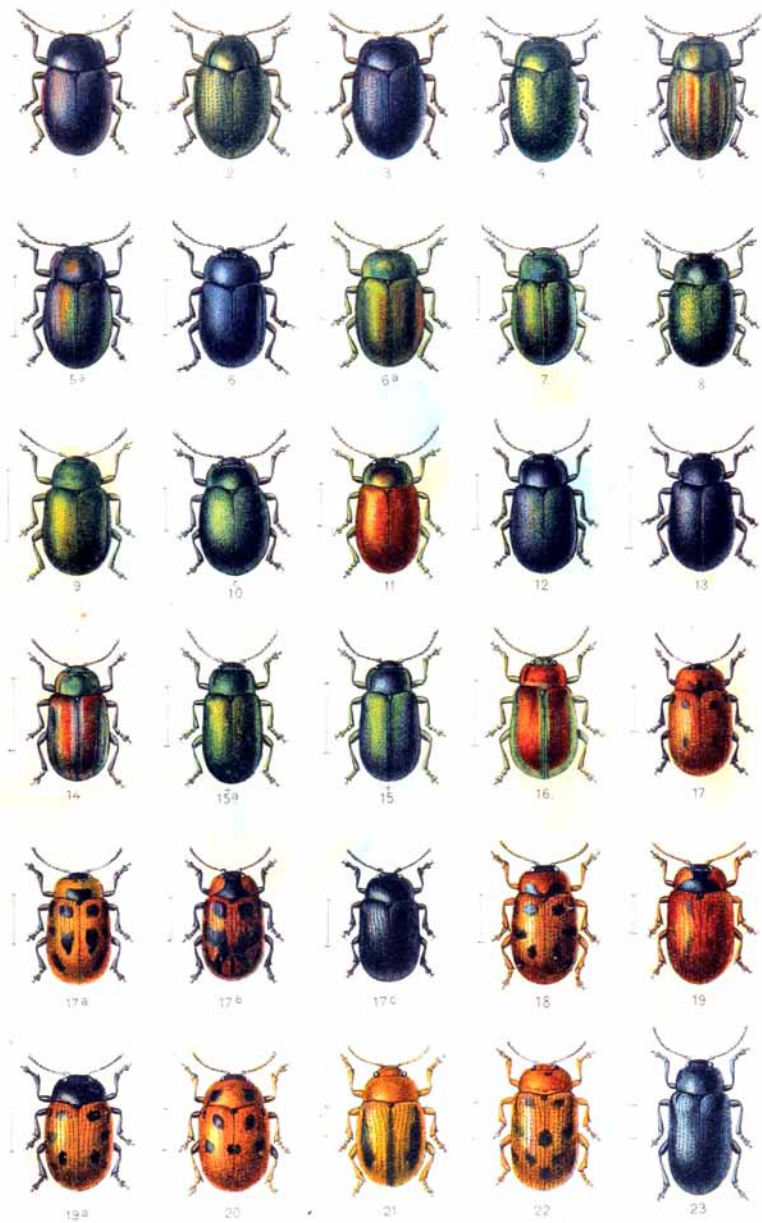
1. *Lema melanopus*. 2. *Lilioceris lili*. 3. *merdigera*. 4. *Crioceris 12-punctata*. 5. *14-punctata*. 6. *5-punctata*. 7. *asparagi*. 8. *Labidostomis taxicorinis*. 9. *tridentata*. 10. *humeralis*. 11. *Lachnaea sexpunctata*. 12. *Clytra quadripunctata*. 13. *laeviuscula*. 14. *Gynandrophthalma cyanea*. 15. *aurita*. 16. *xanthaspis*. 17. *Chilotoma musciiformis*. 18. *Coptocephala unifasciata*. 19. *scolopina*. 20. *rubicunda*. 21. *Cryptocephalus coryli*. 22. *cordiger*. 23. *octopunctatus*. 24. *sexpunctatus*.



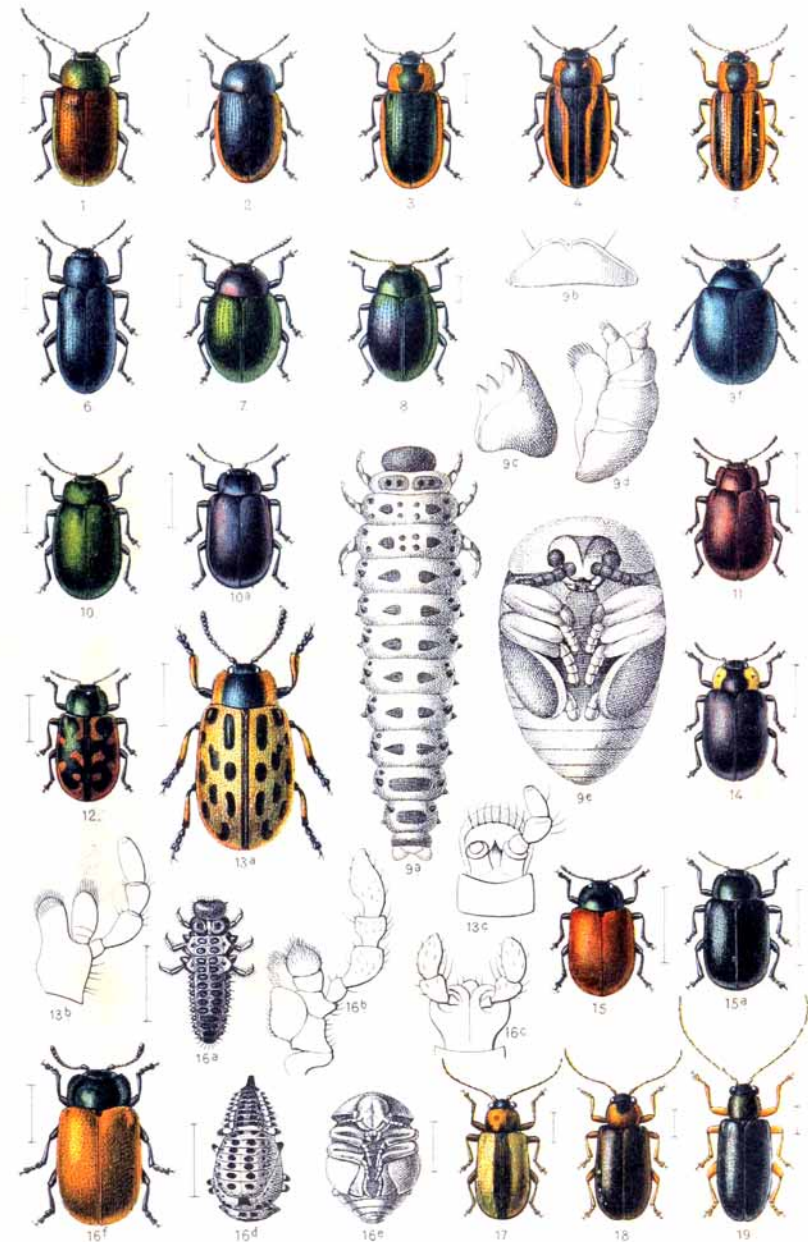
1. *Cryptocephalus signatus*, 2. *variegatus*, 3. *distinguendus*, 4. *primarius*, 5. *bipunctatus*, 5a. v. *sanguinolentus*, 6. *biguttatus*, 7. 14-*maculatus*, 8. Schäferi, 9. *sericeus*, 10. *violaceus*, 11. *nitidulus*, 12. *parvulus*, 13. *marginatus*, 14. *pini*, 15. *frenatus*, 15a v. *flavescens*, 16. *Moraei*, 16b v. *bivittatus*, 17. *quadripustulatus*, 18. *flavipes*, 19. *vittatus*, 20. *bilineatus*, 21. *elegantulus*, 22. *chrysopus*, 23. *pygmaeus* 23a v. *amoenus*, 24. *fulvus*.



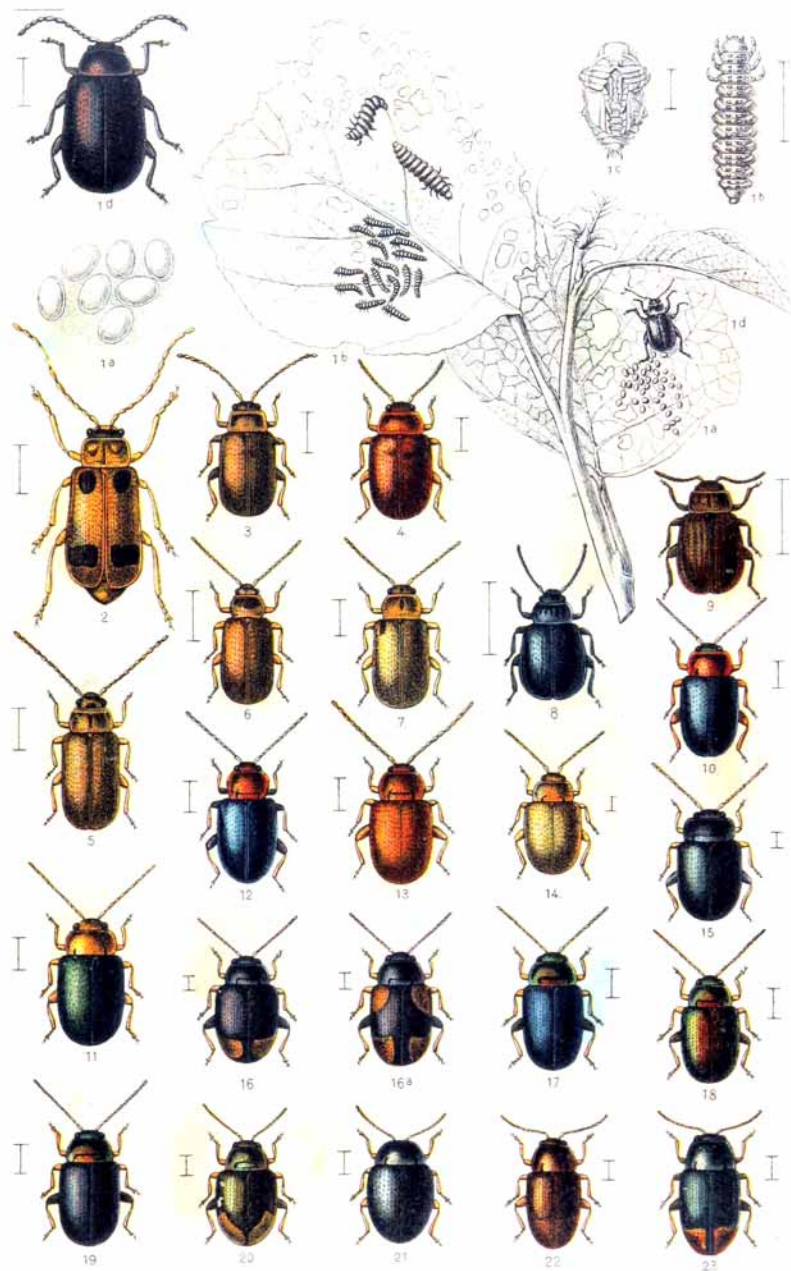
1. *Pachybrachys hieroglyphicus*, 2. *fimbriolatus*, 3. *Lamprosoma concolor*, 4. *Pachnephorus pilosus*, 5. *Bromius obscurus*, 5a. v. *villosulus*, 6. *Chrysoschus asclepiadeus*, 7. *Colaphus sophiae*, 8. *Gastroidea viridula*, 9. *polygöni*, 10. *Entomoscelis adonidis*, 11. *Timarcha tenebricosa*, 12. *metallica*, 13. *Chrysomela lichenis*, 14. *rufa*, 15. *purpurascens*, 16. *olivacea*, 17. *haemoptera*, 18. *goettingensis*, 19. *limbata*, 20. *staphylea*, 21. *sanguinolenta*, 22. *marginata*.



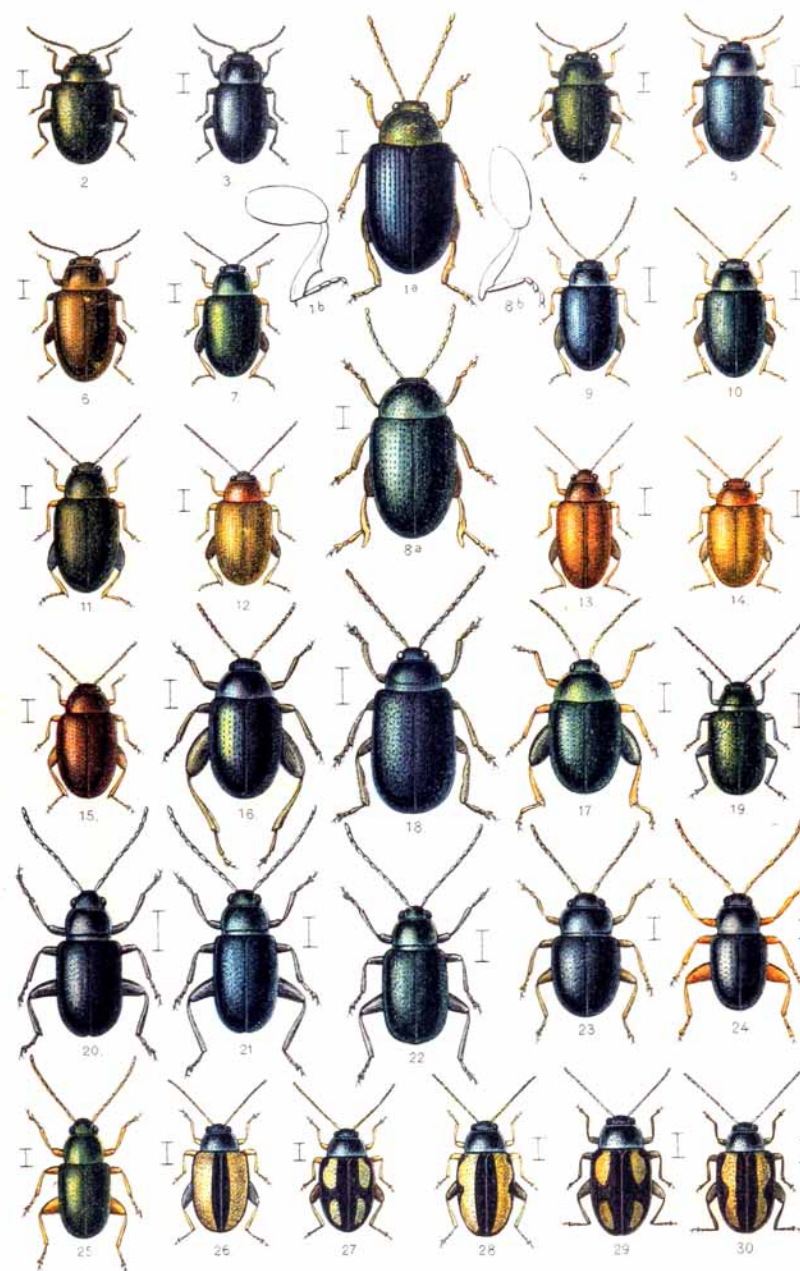
1. *Chrysomela analis*, 2. *orichalcea*, 3. *geminata*, 4. *hyperici*, 5. *cerealis*, 5a. v. *alternans*, 6. *coerulans*, 6a. v. *rubifastuosa*, 7. *fastuosa*, 8. *graminis*, 9. *mentharstri*, 10. *varians*, 11. *polita*. 12. *Chrysochloa tristis*, 13. *intricata*, 14. *polymorpha*, 15. *cacaliae*, 15a. v. *fraudulenta*, 16. *speciosissima* v. *Letzneri*. 17. *Phytodecta viminalis*, 17a. v. *10-punctata*, 17b. v. *Baederi*, 17c. v. *calcarata*, 18. *rufipes*, 19. *Linnaeana*, 19a. v. *nigricollis*, 20. *forficata*, 21. *olivacea* v. *litura*, 22. *quinquepunctata*, 23. *Phyllodecta vulgatissima*.



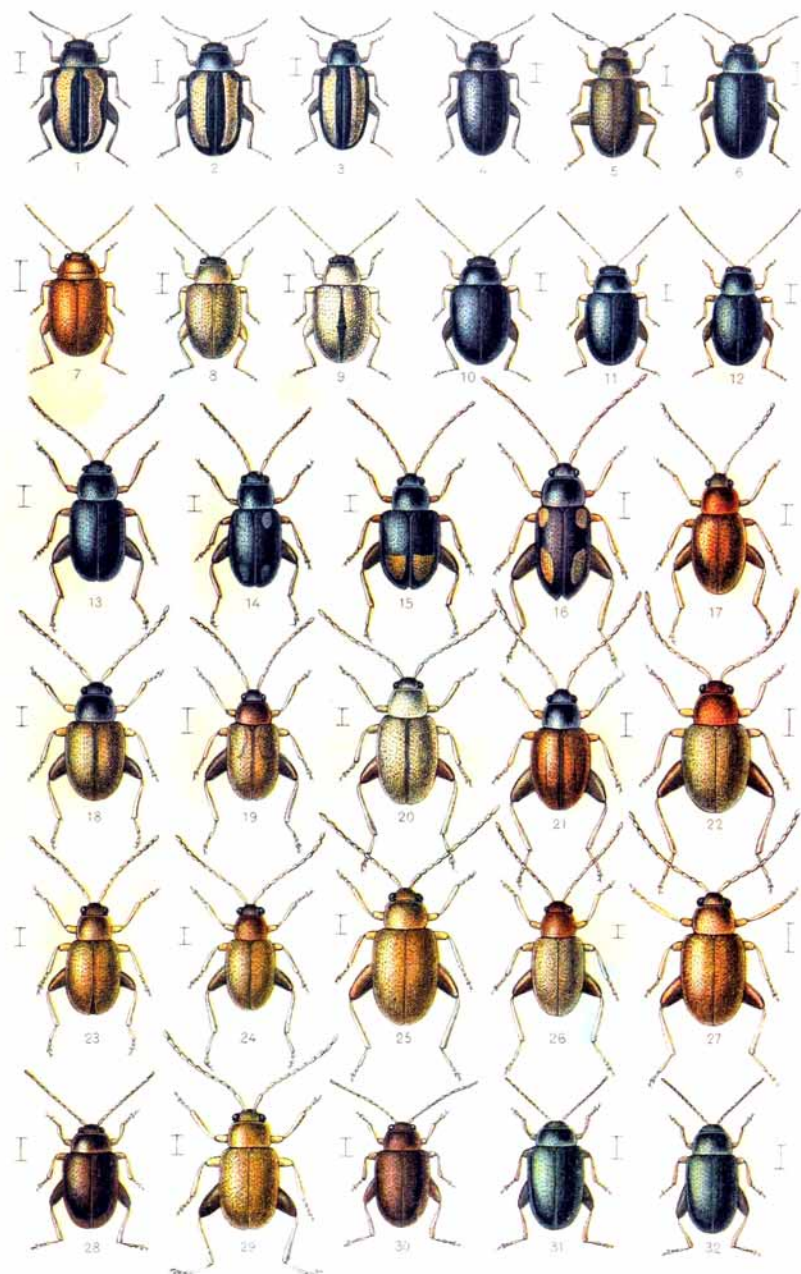
1. *Phyllodecta vitellinae*, 2. *Hydrothassa aucta*, 3. *marginella*, 4. *hannoverana*, 5. *Prasocuris phellandri*, 6. *junci*. 7. *Sclerophaedon carniolicus*. 8. *Phaedon segnis*. 9. *Plagiodera versicolor*. 10. *Melasoma aenea*, 10a. v. *haemorrhoidalis*, 11. *cuprea*, 12. *lapponica*, 13. *vigintipunctata*, 14. *collaris*, 15. *populi*, 15a. v. *Janaceki*, 16. *tremulae*, 17. *Luperus circumfusus*, 18. *pinicola*, 19. *niger*.



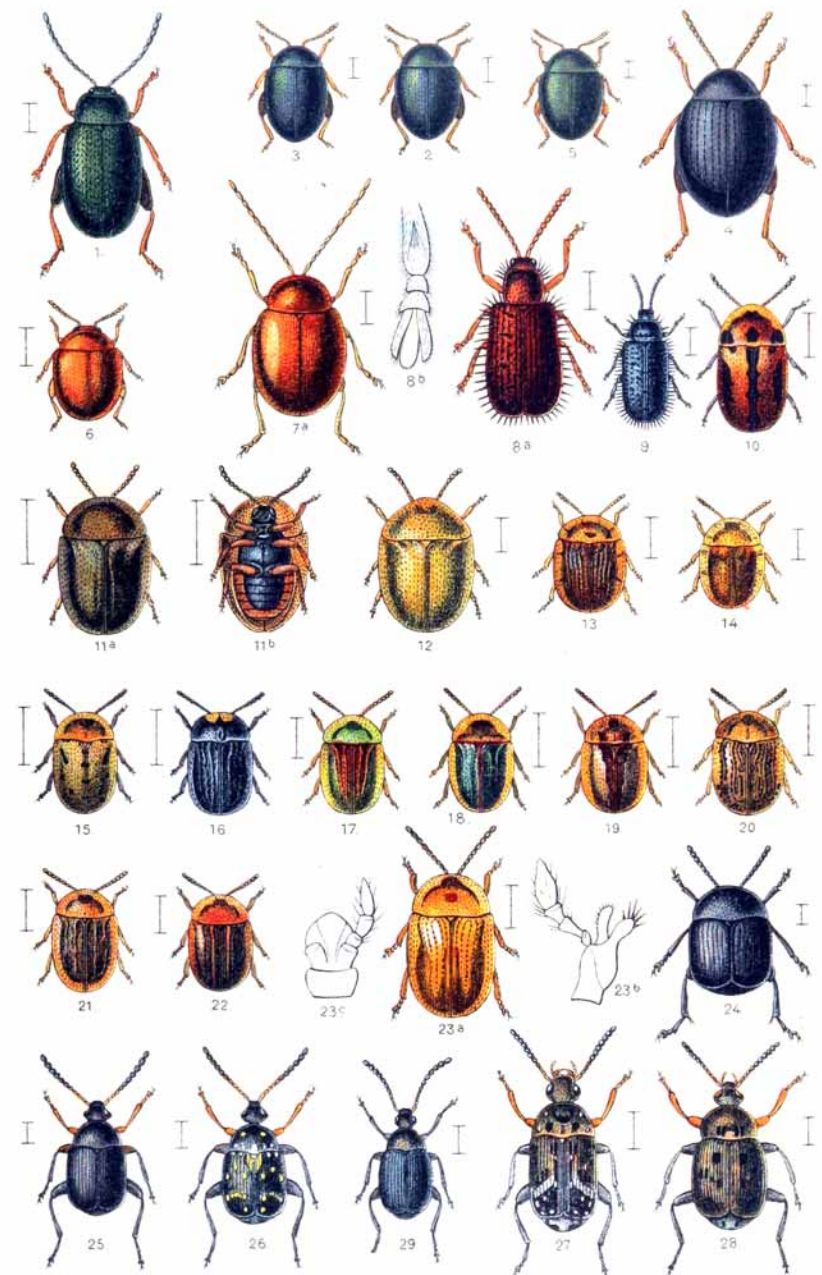
1. *Agelastica alni*. 2. *Phyllobrotica quadrimaculata*. 3. *Lochmaea capreae*, 4. *crataegi*. 5. *Galerucella viburni*. 6. *nymphaea*. 7. *lineola*. 8. *Galeruca tanacetii*. 9. *pomonae*. 10. *Podagrica malvae*. 11. *fuscicornis*. 12. *Crepidodera femorata*. 13. *transversa*. 14. *Ochrosis ventralis*. 15. *Epitrix pubescens*, 16. *atropae*, 16a. *v. quadrimaculata*. 17. *Chalcoides nitidula*. 18. *aurea*. 19. *aurata*. 20. *Hippuriphila Mooleri*. 21. *Minota obesa*. 22. *Mantura chrysanthemi*. 23. *rustica*.



1. *Chaetocnema semicoerulea*, 2. *concinna*, 3. *compressa*, 4. *angustula*, 5. *Mannerheimi*, 6. *aridula*. 7. *Psylliodes attenuata*, 8. *cucullata*, 9. *chrysocephala*, 10. *napi*, 11. *cuprea*, 12. *affinis*, 13. *circumdata*, 14. *luteola*, 15. *picina*, 16. *dulcamarae*, 17. *hyoscyami*, 18. *Haltica quercetorum*, 19. *oleracea*, 20. *tamaricis*, 21. *palustris*, 22. *pusilla*. 23. *Hermaeophaga mercurialis*. 24. *Glyptina rubi*, 25. *aerata*, 26. *Phyllotreta armoraciae*, 27. *exclamations*, 28. *ochripes*, 29. *tetrastigma*, 30. *flexuosa*.



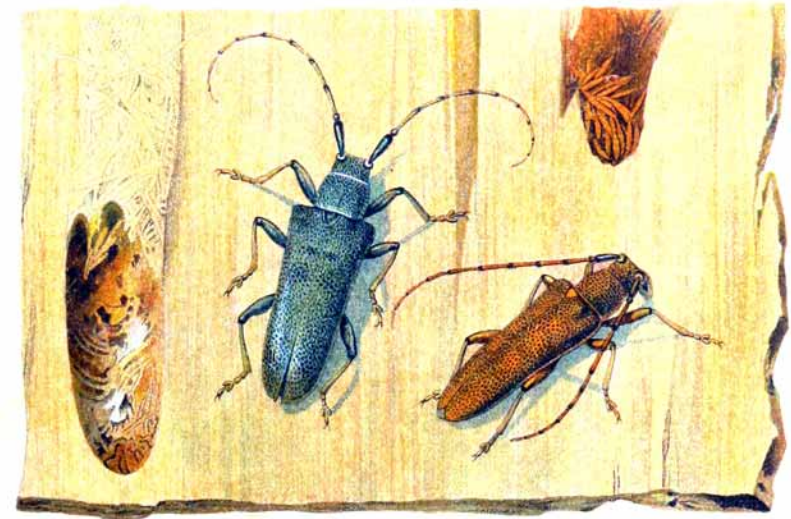
1. *Phyllotreta vittata*, 2. *undulata*, 3. *vittata*, 4. *atra*, 5. *nodicornis*, 6. *nigripes*, 7. *Aphonosoma cyparissiae*, 8. *pallida*, 9. *v. Geranii*, 10. *pygmaea*, 11. *euphorbiae*, 12. *herbigrada*, 13. *Longitarsus anchusae*, 14. *absinthii*, 15. *holsaticus*, 21. *suturalis*, 22. *tabidus*, 23. *membranaceus*, 24. *lycopi*, 25. *ballotae*, 26. *pra-16. quadriguttatus*, 17. *luridus*, 18. *nasturtii*, 19. *atricillus*, 20. *gracilis*, *tensis*, 27. *jacobaeae*, 28. *apicalis*, 29. *ochroleucus*, 30. *brunneus*. 31. *Dibolia occultans*, 32. *timida*.



1. *Dibolia femoralis*. 2. *Apteropeda globosa*, 3. *orbiculata*, 4. *splendida*, 5. *Mniophila muscorum*. 6. *Argopus Ahrensi*. 7. *Sphaeroderma testaceum*. 8. *Hispa testacea*. 9. *Hispella atra*. 10. *Cassida fastuosa*, 11. *viridis*, 12. *haemisphaerica*, 13. *azurea*, 14. *margaritacea*, 15. *murraea*, 16. *atrata*, 17. *sanguinolenta*, 18. *rubiginosa*, 19. *vibex*, 20. *nebulosa*, 21. *flaveola*, 22. *nobilis*, 23. *vittata*. 24. *Spermophagus cisti*, 25. *Laria loti*, 26. *atomaria*, 27. *pisorum*, 28. *lenticis*, 29. *Bruchidius cisti*.



1. *Rosalia alpina* samt Larve und Puppenwiege im Buchenholze. 2. *Saperda populnea* und Larve in Anschwellungen lebender Aeste junger Aspen.



1. *Saperda carcharias* samt Fraßstück und Puppenwiege im Pappelholze. 2. 3 *Harpium inquisitor* samt Fraßbild in unter- und oberseitiger Coniferen-Rinde mit Larve, Puppe und Puppenwiege.