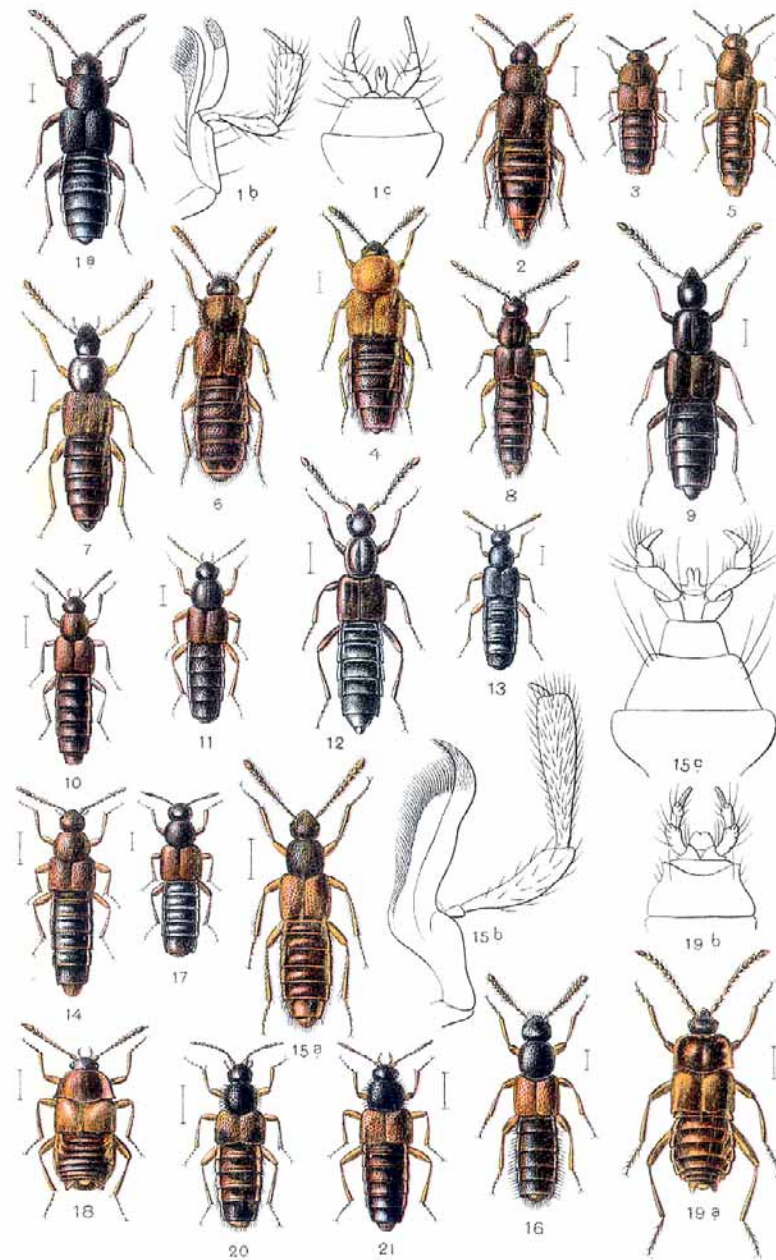
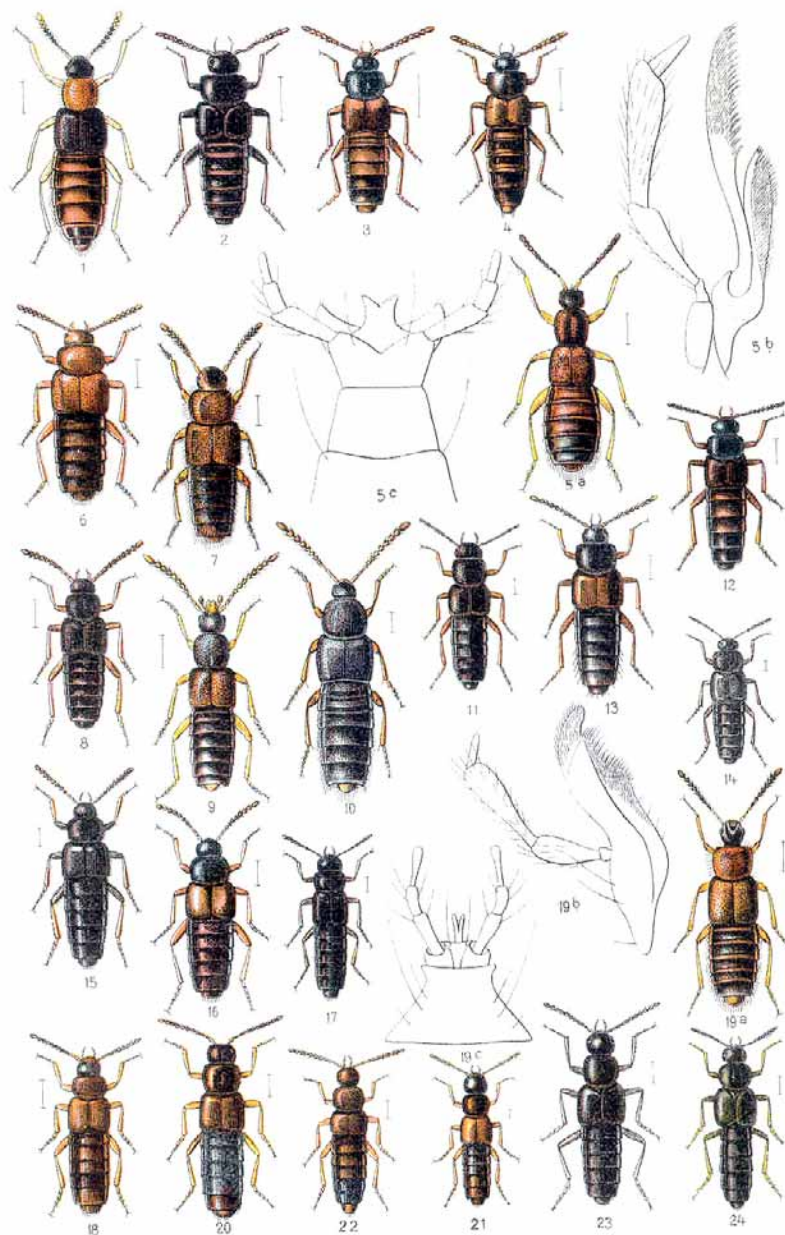


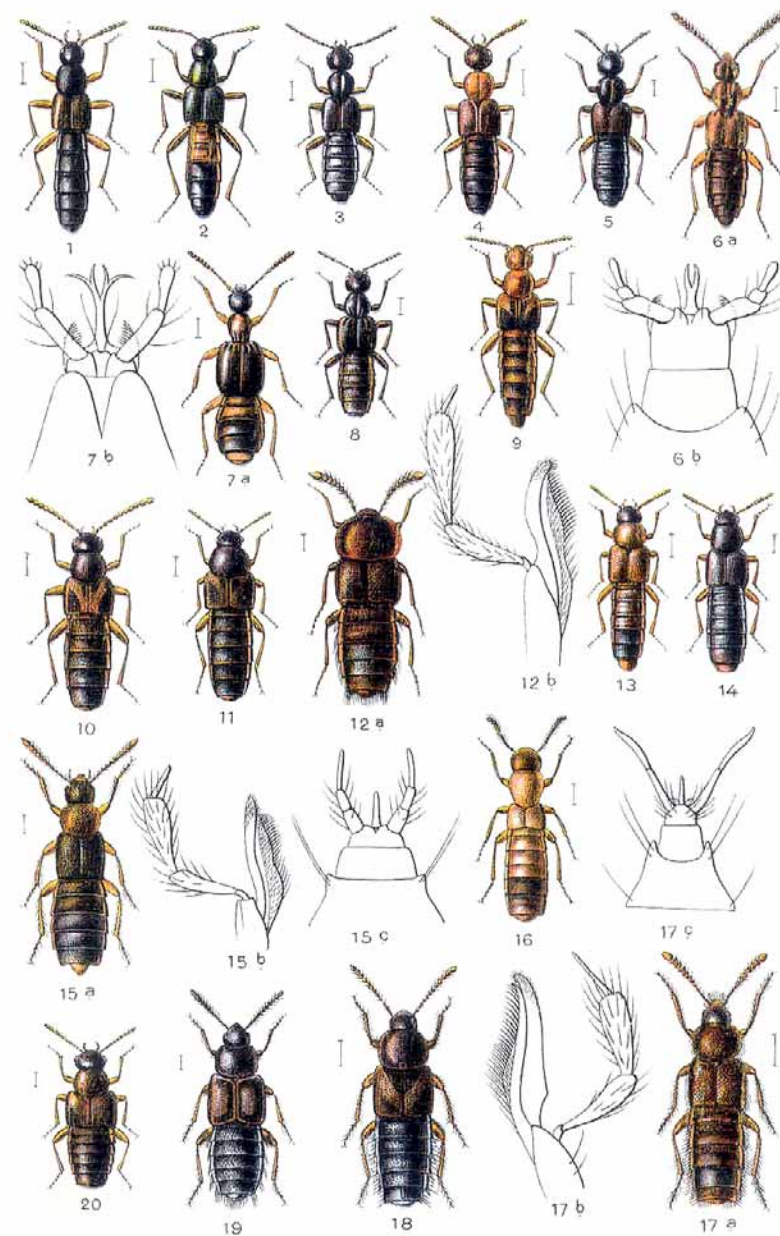
1. *Aleochara spissicornis*, 2. *intricata*, 3. *laevigata*, 4. *lanuginosa*, 5. *moerens*, 6. *bipustulata*, 7. *ruficornis*, 8. *Dinardea dentata*, 9. *Homoeusa acuminata*, 10. *Microglossa pulla*, 11. *picipennis*, 12. *gentilis*, 13. *Crataraea suturalis*, 14. *Oxypora spectabilis*, 15. *lividipennis*, 16. *vittata*, 17. *alternans*, 18. *formiceticola*, 19. *annularis*, 20. *Hydropora cunctans*.



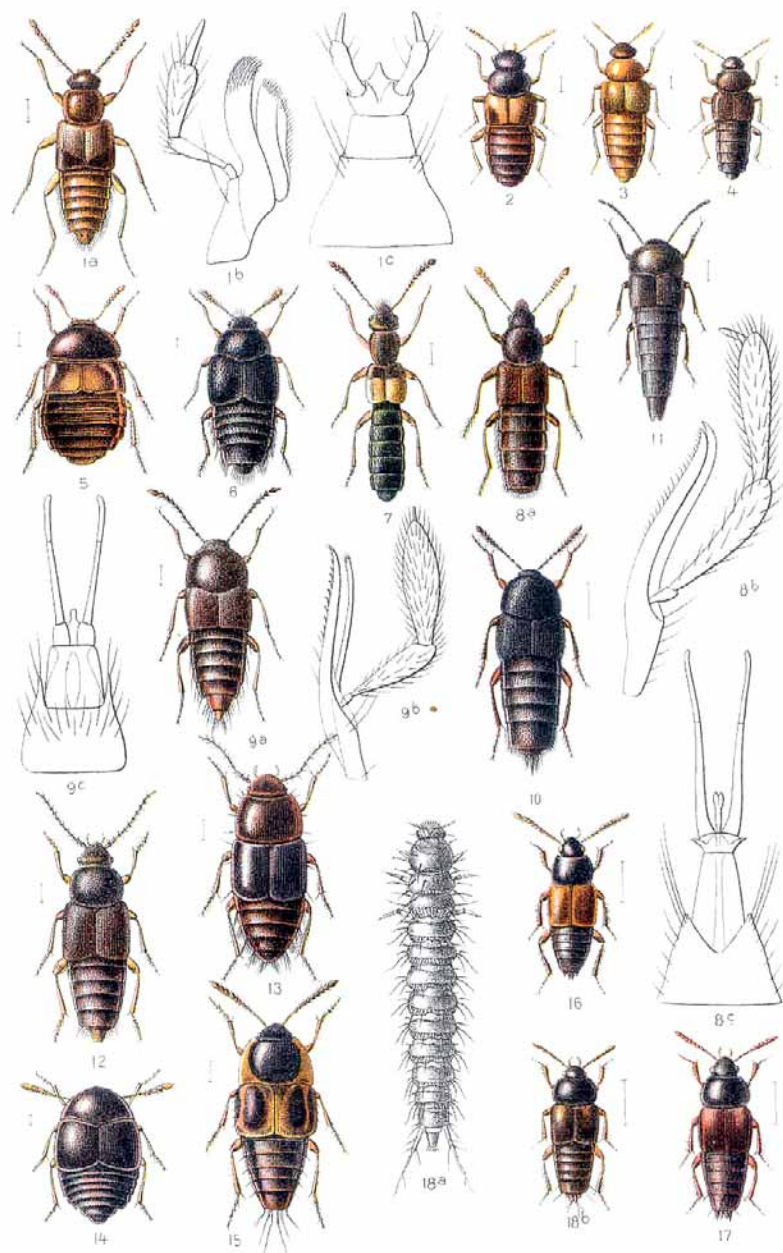
1. *Ocyusa maura*, 2. *Thiasophila angulata*, 3. *inquilina*, 4. *Stichoglossa semirufa*, 5. *Dexiogyga corticina*, 6. *Ischnoglossa proluxa*, 7. *Ocalea badia*, 8. *picata*, 9. *Chilopora longitarsis*, 10. *rubicunda*, 11. *Ityocara rubens*, 12. *Calodera nigrita*, 13. *aethiops*, 14. *Amarochara forticornis*, 15. *Ilyobates nigricollis*, 16. *Phloeopora testacea*, 17. *corticalis*, 18. *Ateletes emarginatus*, 19. *paradoxus*, 20. *Zyras Haworthi*, 21. *fulgida*.



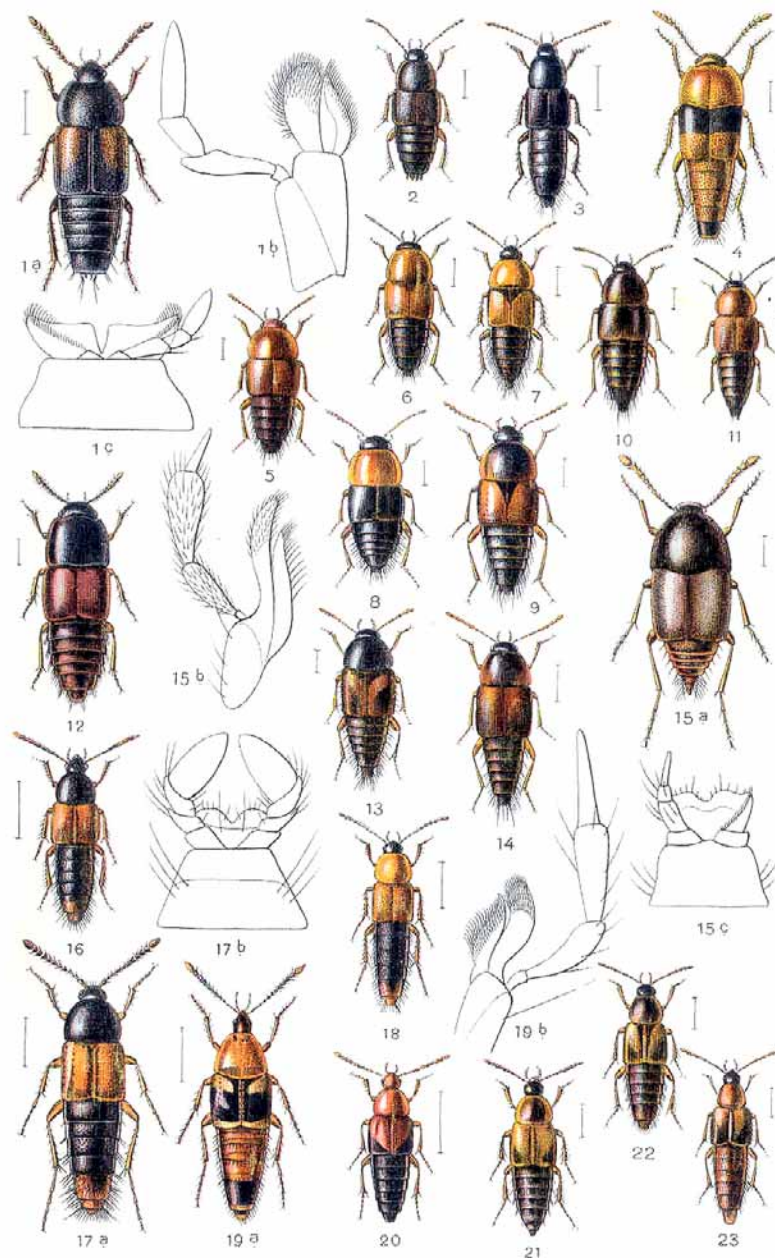
1. *Zyras collaris*. 2. *Myrmedonia funesta*. 3. *humeralis*. 4. *cognata*. 5. *Astilbus canaliculatus*. 6. *Thamiaraea cinnamomea*. 7. *hospita*. 8. *Callicerus obscurus*. 9. *rigidicornis*. 10. *Schistoglossa viduata*. 11. *Dadobia immersa*. 12. *Notothecta flavipes*. 13. *Atheta longicornis*. 14. *sordidula*. 15. *atramentaria*. 16. *trinotata*. 17. *excisa*. 18. *brunnea*. 19. *melanocephala*. 20. *angustula*. 21. *subtilissima*. 22. *Sipalia circellaris*. 23. *Ischnopoda atra*. 24. *Tachyusa coarctata*.



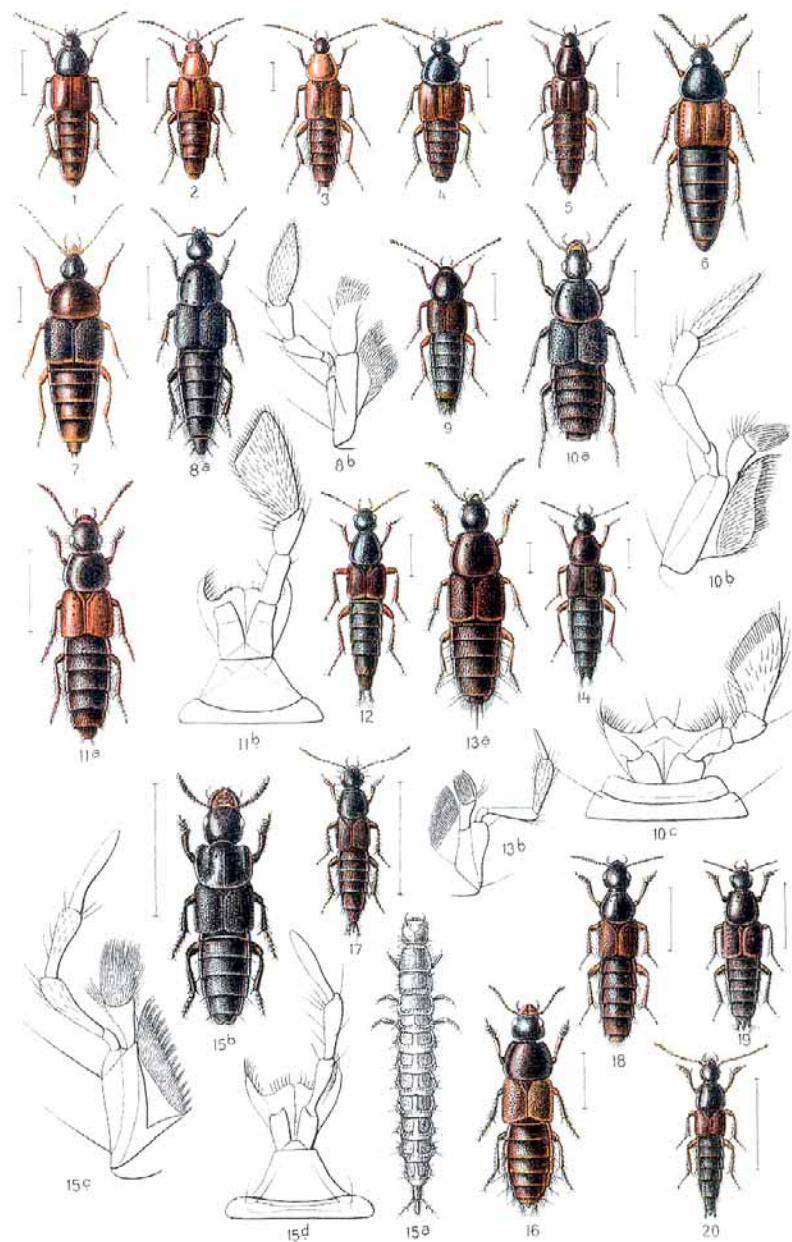
1. *Tachyusa constricta*. 2. *balteata*. 3. *Falagria sulcata*. 4. *thoracica*. 5. *Falagriola nigra*. 6. *Cardiola obscura*. 7. *Autalia impressa*. 8. *rivularis*. 9. *Bolitochara lucida*. 10. *obliqua*. 11. *Phymatura brevicollis*. 12. *Euryusa sinuata*. 13. *Leptusa angusta*. 14. *haemorrhoidalis*. 15. *ruficollis*. 16. *Phytosus nigriventris*. 17. *Silusa rubra*. 18. *rubiginosa*. 19. *Placusa pumilio*. 20. *Gyrophaena affinis*.



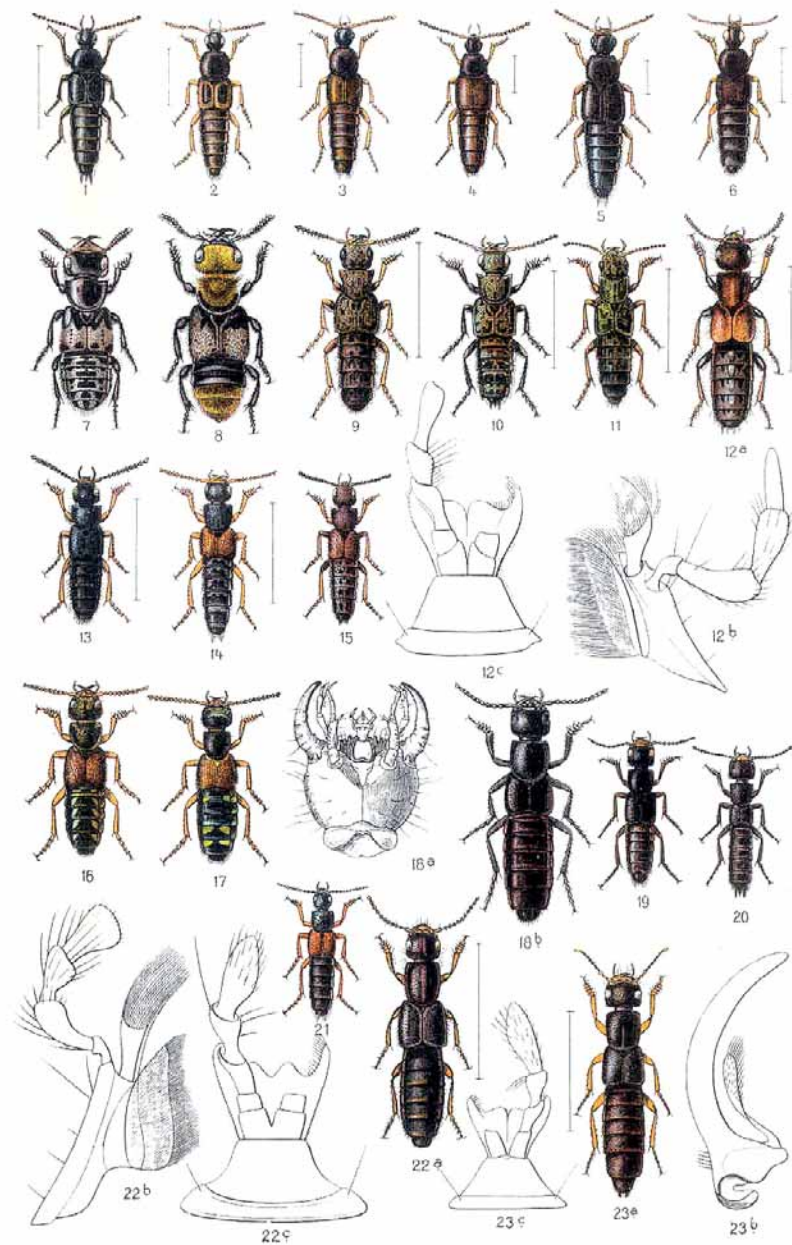
1. *Gyropseena pulchella*, 2. *nana*, 3. *minima*, 4. *boleti*. 5. *Encephalus complicans*. 6. *Oligota flavicornis*. 7. *Hygronoma dimidiata*. 8. *Pronomaea rostrata*. 9. *Myllaena intermedia*. 10. *Gymnusa brevicollis*. 11. *Dinopsis erosa*. 12. *Trichophya pilicornis*. 13. *Habrocerus capillaricornis*. 14. *Hypocyptus longicornis*. 15. *Leucoparyphus silphoides*. 16. *Tachinus flavipes*, 17. *bipustulatus*, 18. *rufipes*.



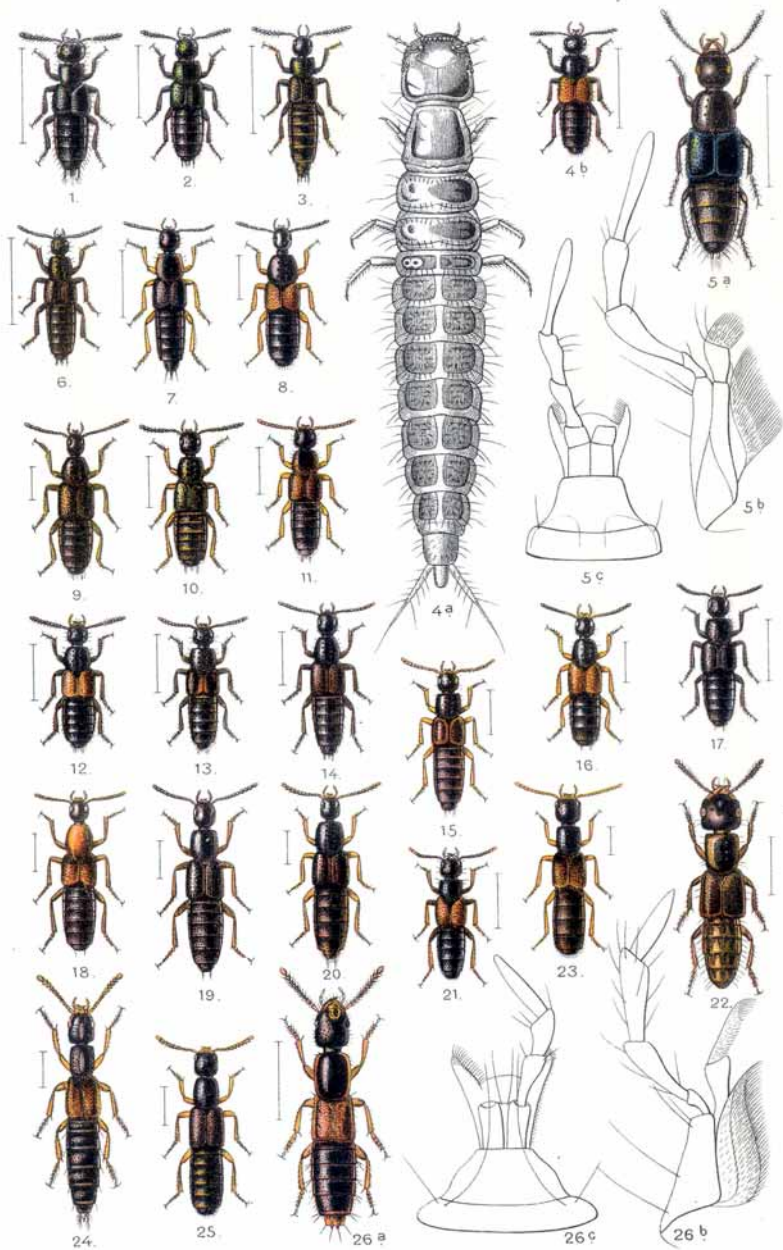
1. *Tachinus subterraneus*, 2. *collaris*, 3. *elongatus*. 4. *Tachyporus obtusus*, 5. *abdominalis*, 6. *solutus*, 7. *chrysomelinus*, 8. *ruficollis*, 9. *hypnorum*, 10. *macropterus*, 11. *nitidulus*. 12. *Lamprinus erythropterus*. 13. *Conosoma bipunctatum*, 14. *littoreum*, 15. *pubescens*. 16. *Bryocharis cingulatus*, 17. *analis*, 18. *formosus*. 19. *Bolitobius lunulatus*, 20. *bicolor*, 21. *trimaculatus*, 22. *trinitatus*, 23. *exoletus*.



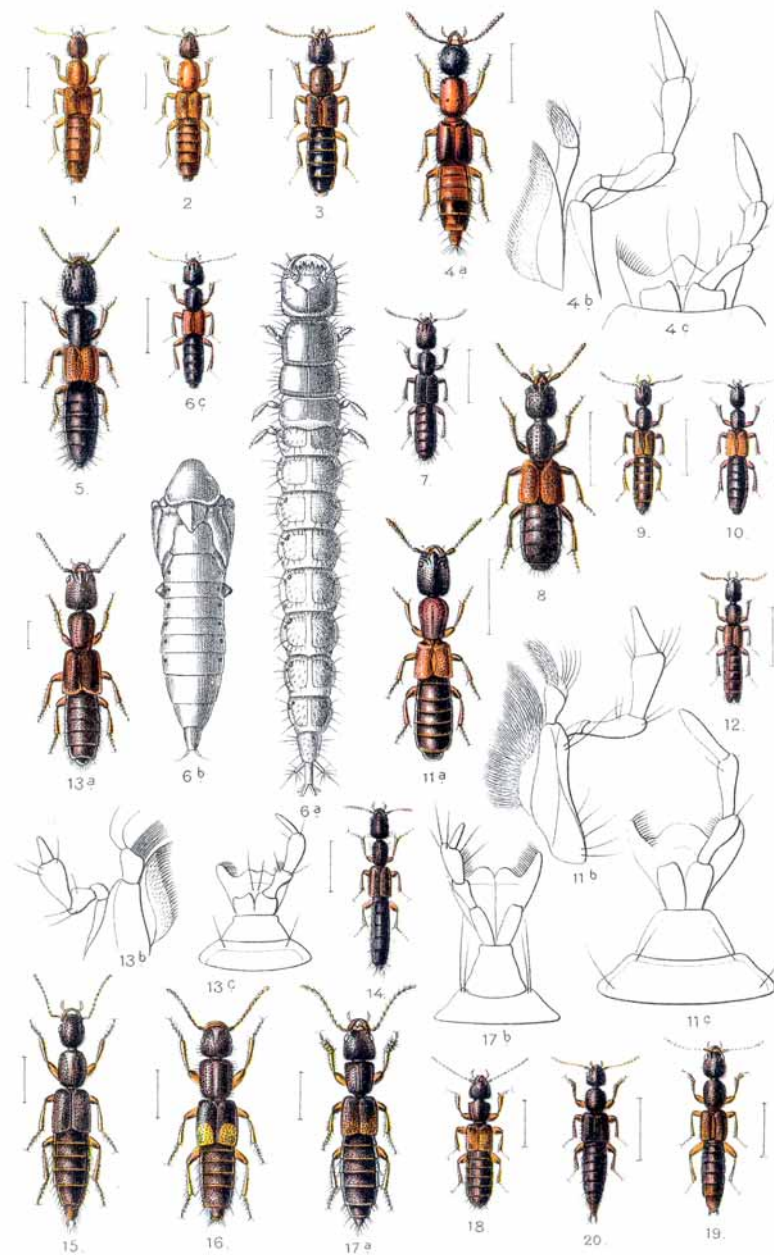
1. *Bryoporus cernuus*, 2. *rufus*. 3. *Mycetoporus splendidus*, 4. *Maerkeli*, 5. *brunneus*, 6. *splendens*, 7. *Tanygnathinus terminalis*, 8. *Acylophorus glaberrimus*, 9. *Wagenschiebe*, 10. *Euryporus picipes*, 11. *Astrapaeus ulmi*, 12. *Heterothops praevia*, 13. *dissimilis*, 14. *quadripunctula*, 15. *Velleius dilatatus*, 16. *Quedius brevis*, 17. *lateralis*, 18. *cruentus*, 19. *cinctus*, 20. *molochinus*.



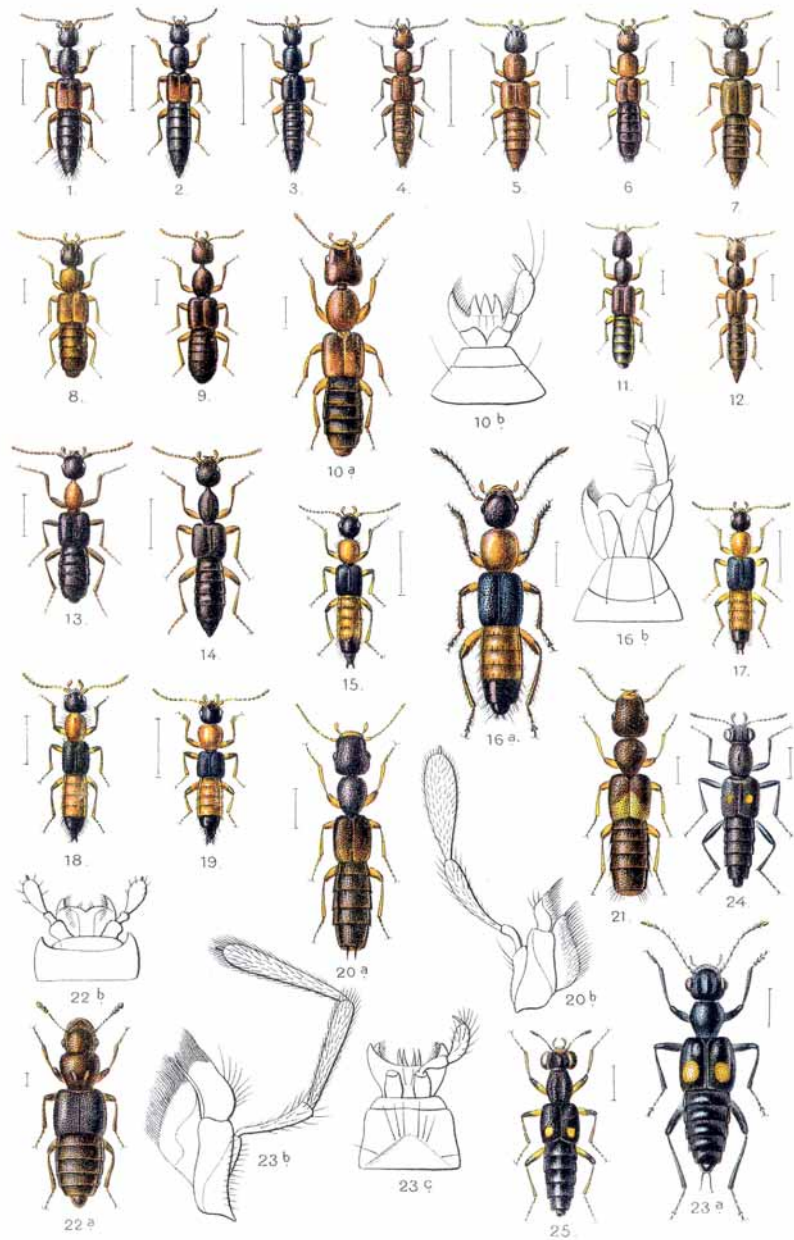
1. *Quedius unicolor*, 2. *dubius*, 3. *humeralis*, 4. *lucidulus*, 5. *alpestris*, 6. *paradisianus*, 7. *Creophilus maxillosus*, 8. *Emus hirtus*, 9. *Ontholestes tessellatus*, 10. *murinus*, 11. *Staphylinus pubescens*, 12. *fossor*, 13. *fulvipes*, 14. *stercorarius*, 15. *chalcocephalus*, 16. *caesareus*, 17. *erythropterus*, 18. *olens*, 19. *ophthalmicus*, 20. *similis*, 21. *fulvipennis*, 22. *pedator*, 23. *compressus*.



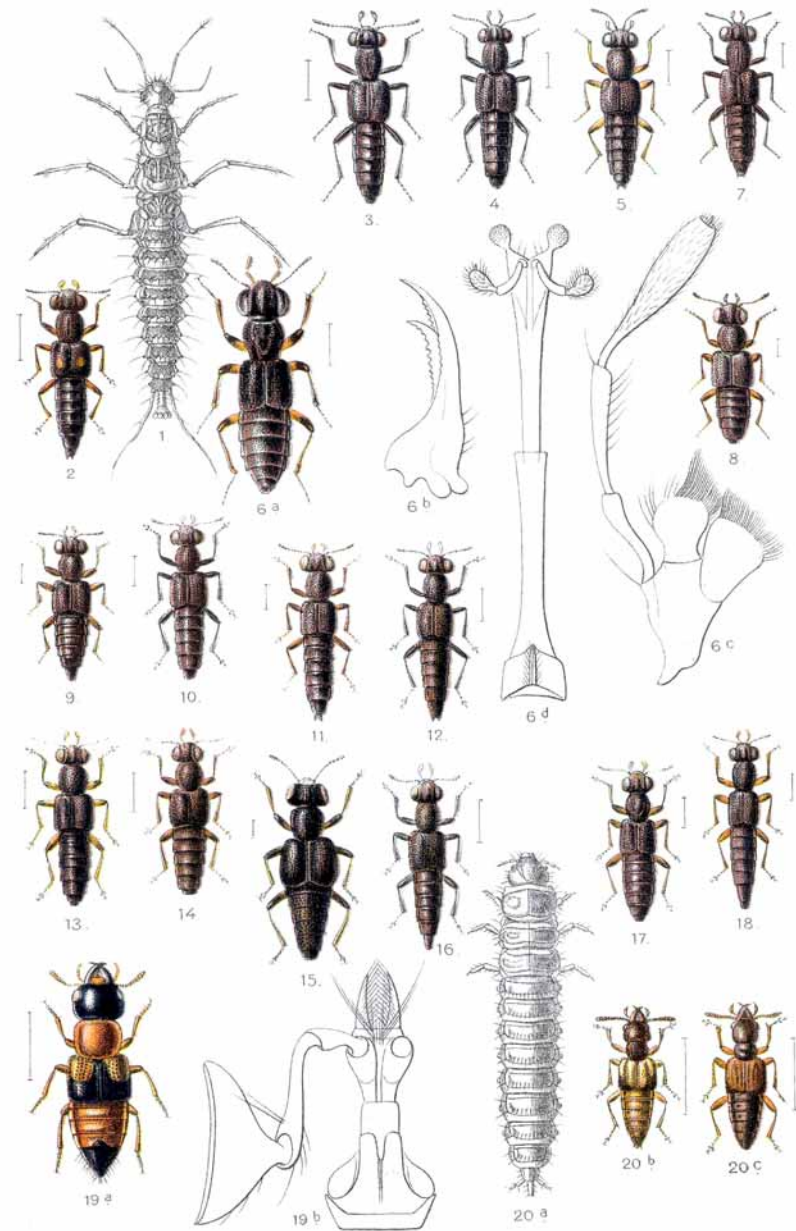
1. *Philonthus splendens*, 2. *intermedius*, 3. *laevicollis*, 4. *nitidus*, 5. *cyanipennis*, 6. *decorus*, 7. *marginatus*, 8. *lepidus*, 9. *albipes*, 10. *fimetarius*, 11. *fuscus*, 12. *coruscus*, 13. *sanguinolentus*, 14. *varians*, 15. *discoideus*, 16. *fulvipes*, 17. *punctus*, 18. *tenuis*, 19. *pullus*, 20. *splendidulus*, 21. *Hesperus rufipennis*, 22. *Cafius xantholoma*, 23. *Neobisnius villosulus*, 24. *prolixus*, 25. *Actobius cinerascens*, 26. *Othius punctulatus*.



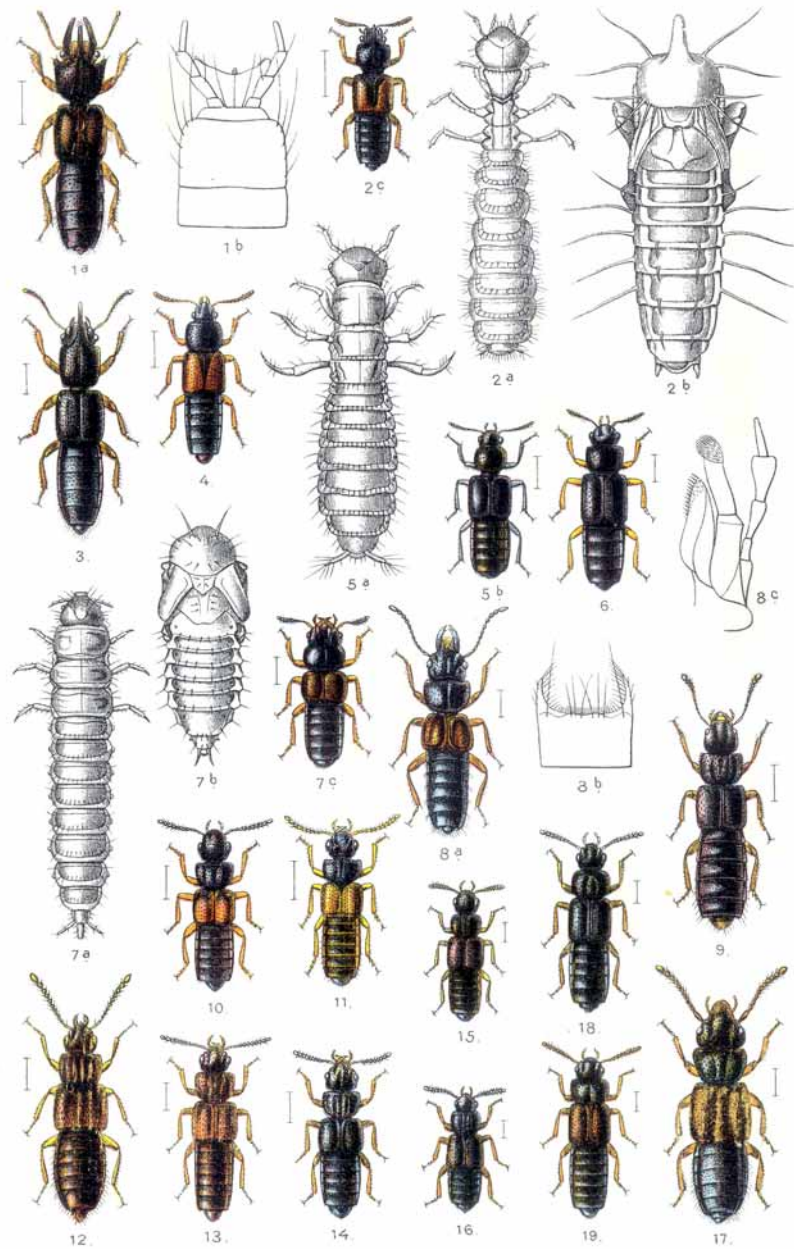
1. *Othius melanocephalus*, 2. *myrmecophilus*, 3. *Baptolinus pilicornis*, 4. *affinis*, 5. *Gauropterus fulgidus*, 6. *Xantholinus lentus*, 7. *punctulatus*, 8. *glabratus*, 9. *glaber*, 10. *rufipennis*, 11. *tricolor*, 12. *distans*, 13. *Leptacinus batychrus*, 14. *Metoponcus brevicornis*, 15. *Cryptobium fracticorne*, 16. *Dolicoon biguttatus*, 17. *Achenium depressum*, 18. *humile*, 19. *Lathrobium multipunctum*, 20. *quadratum*.



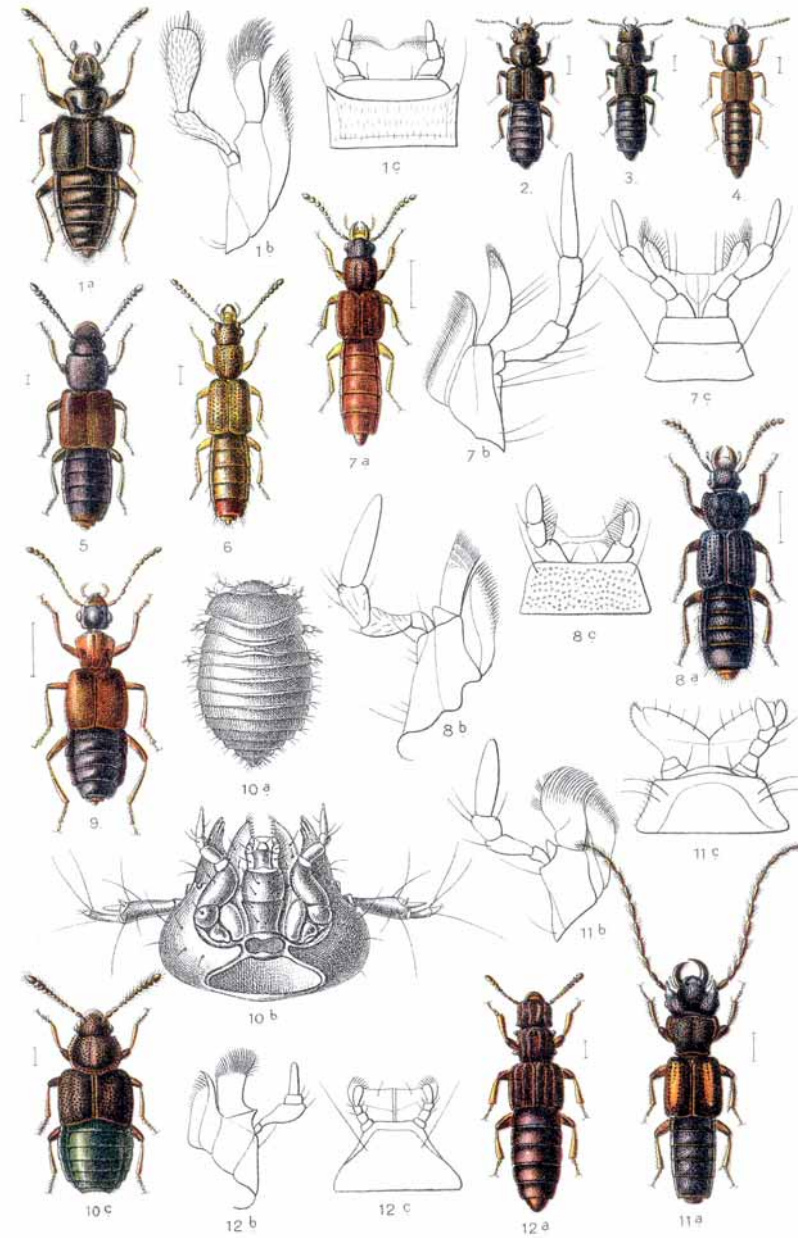
1. *Lathrobium angustatum*, 2. *elongatum*, 3. *brunnipes*, 4. *spadiceum*. 5. *Medon fuscus*, 6. *melanocephalus*, 7. *obsoletus*. 8. *Lithocharis ochracea*. 9. *Scopaeus laevigatus*, 10. *rubidus*, 11. *cognatus*, 12. *sulcicollis*. 13. *Stilicus angustatus*, 14. *subtilis*. 15. *Paederus riparius*, 16. *caligatus*, 17. *fuscipes*, 18. *limnophilus*, 19. *litoralis*. 20. *Astenus filiformis*, 21. *angustatus*. 22. *Euaesthetus ruficapillus*. 23. *Dianous coerulescens*. 24. *Stenus biguttatus*, 25. *guttula*.



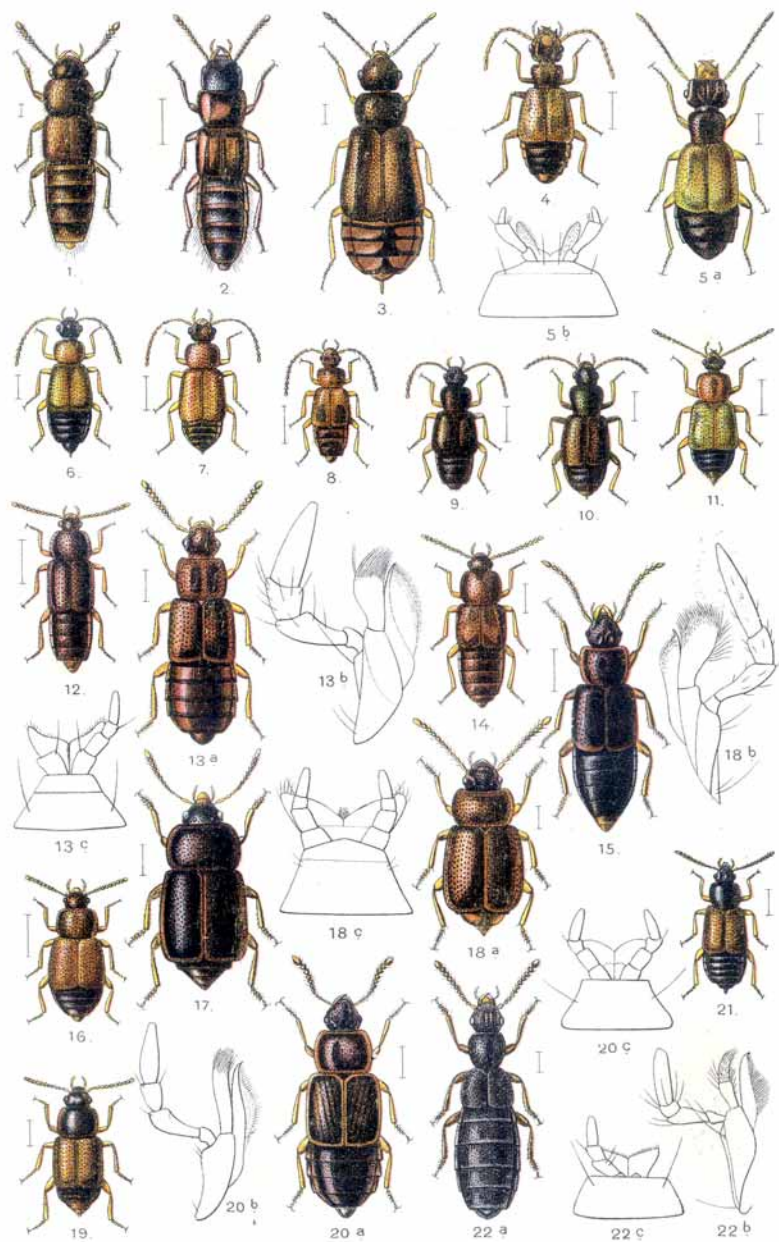
1. *Stenus bipunctatus*, 2. *bimaculatus*, 3. *Juno*, 4. *ater*, 5. *clavicornis*, 6. *Guynemeri*, 7. *atratus*, 8. *nanus*, 9. *circularis*, 10. *nigritulus*, 11. *brunnipes*, 12. *tarsalis*, 13. *similis*, 14. *cicindeloides*, 15. *fornicatus*, 16. *pallitarsis*, 17. *nitidusculus*, 18. *flavipes*. 19. *Oxyporus rufus*, 20. *maxillosus*.



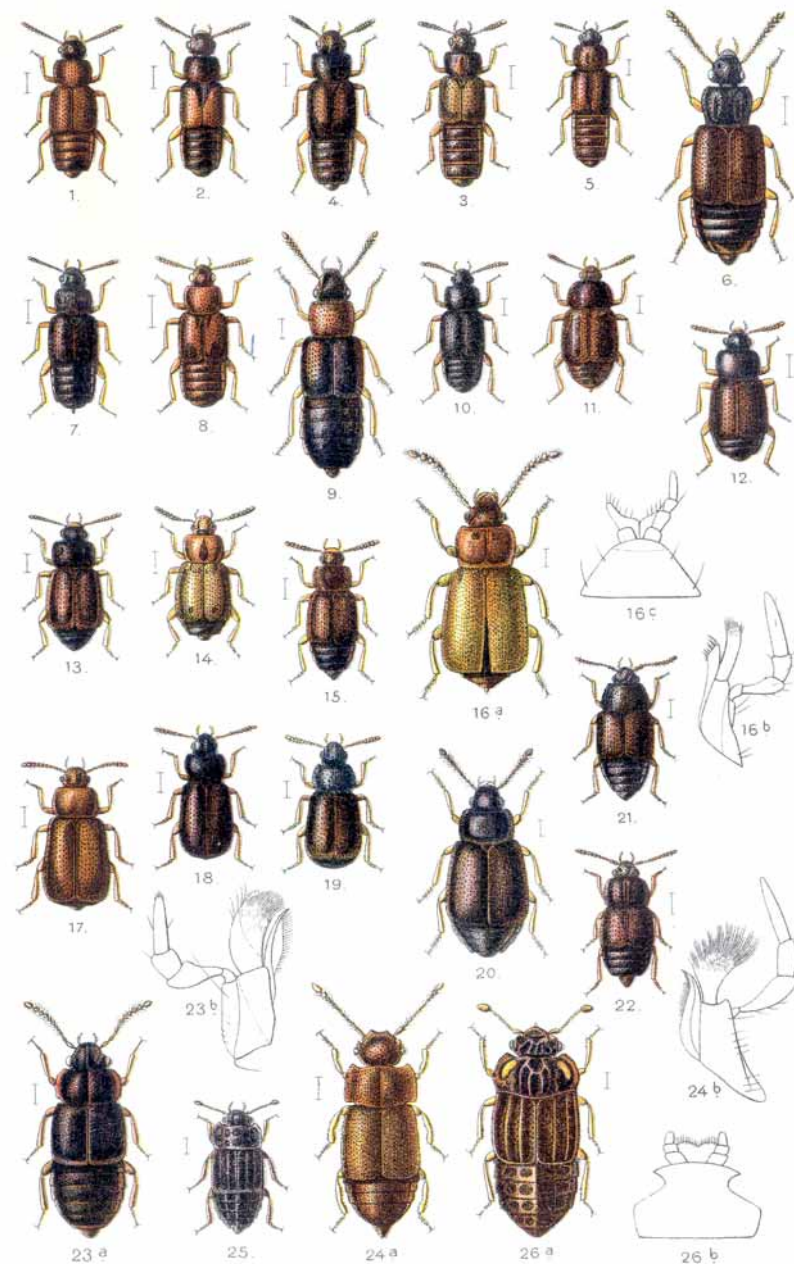
1. *Bledius furcatus*, 2. *tricornis*, 3. *unicornis*, 4. *opacus*, 5. *talpa*, 6. *subterraneus*.
7. *Platystethus arenarius*, 8. *cornutus*. 9. *Oxytelus rugosus*, 10. *insecatus*, 11. *piceus*,
12. *sculptus*, 13. *inustus*, 14. *sculpturatus*, 15. *nitidulus*, 16. *tetracarinatus*. 17. *Haploderus*
caelatus. 18. *Trogophloeus bilineatus*, 19. *fuliginosus*.



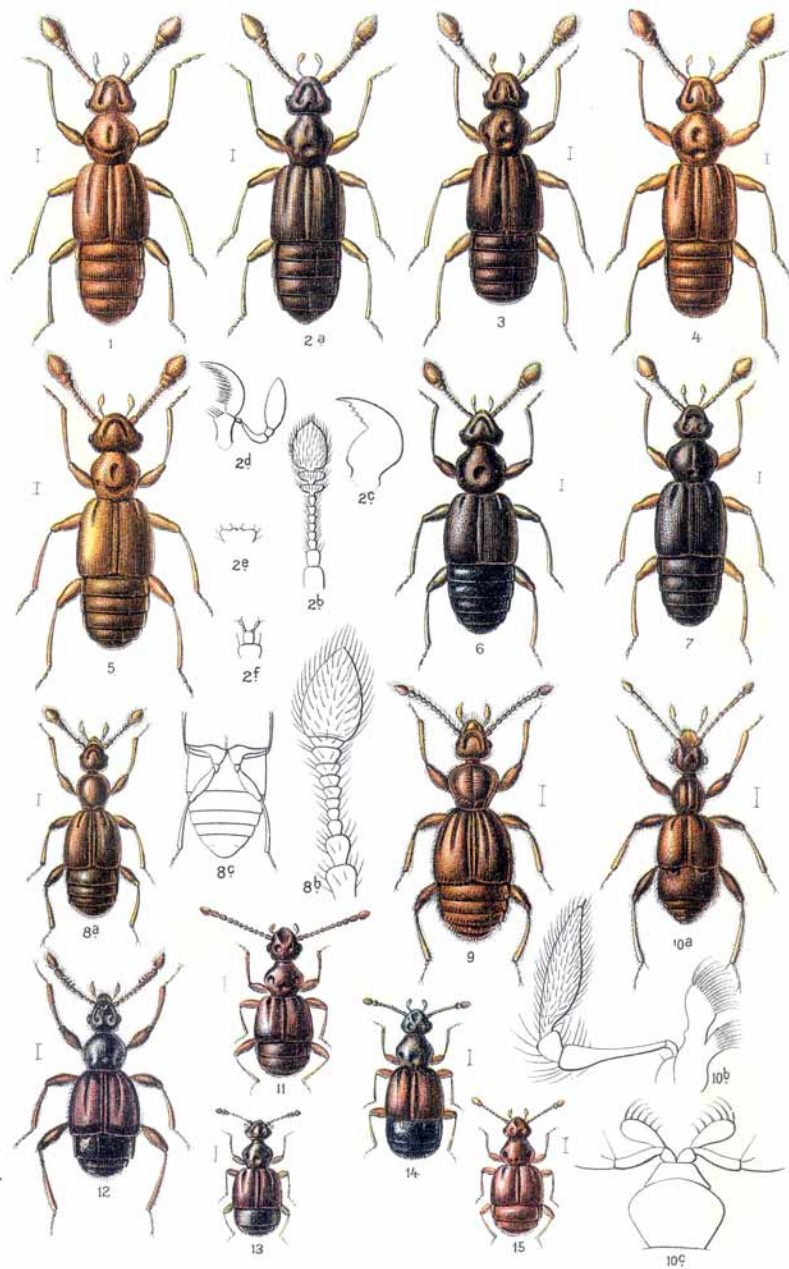
1. *Trogophloeus dilatatus*, 2. *corticinus*, 3. *punctatellus*, 4. *pusillus*. 5. *Thinobius longi-*
pennis. 6. *Planeustomus palpalis*. 7. *Acrognathus mandibularis*. 8. *Coprophilus*
striatulus. 9. *Deleaster dichrous*. 10. *Syntomium aeneum*. 11. *Siagonium humerale*.
12. *Thoracophorus corticinus*.



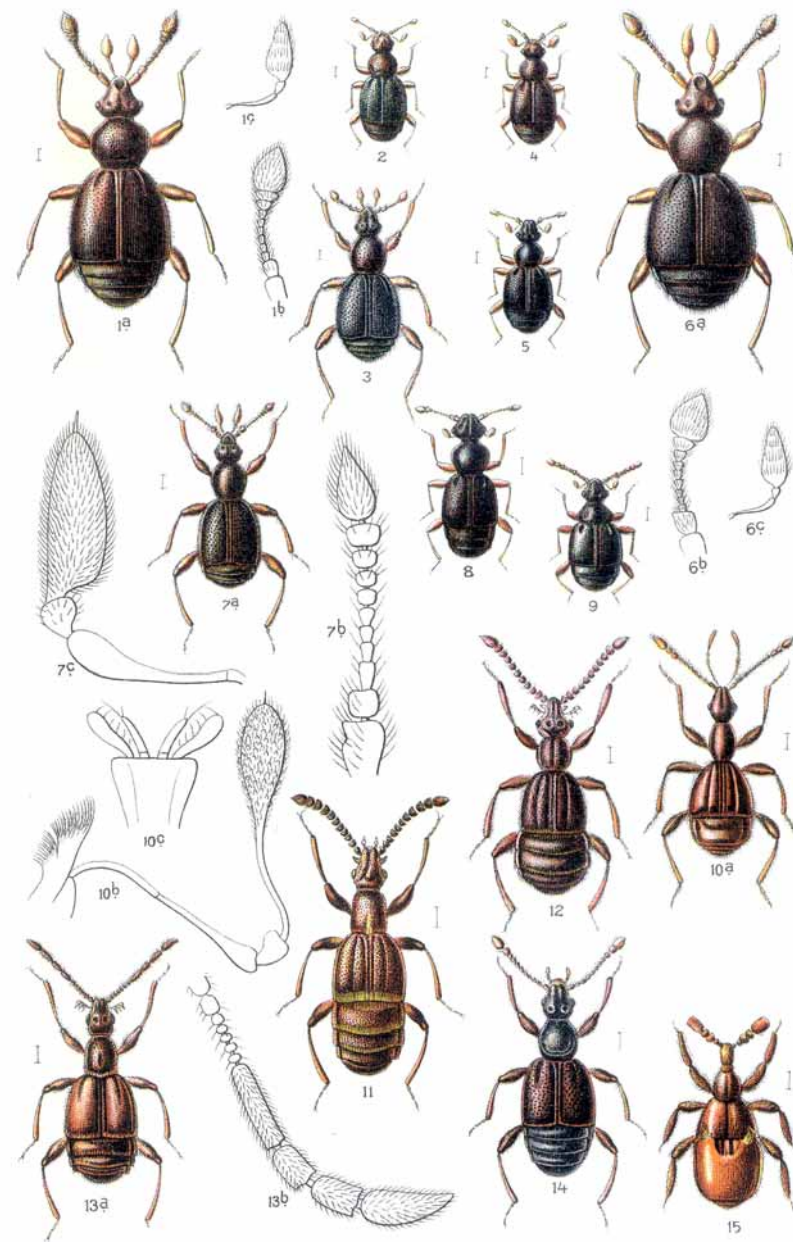
1. *Phloeocharis subtilissima*. 2. *Olisthaerus megacephalus*. 3. *Coryphium angusticollis*. 4. *Anthophagus bicornis*. 5. *alpinus*. 6. *melanocephalus*. 7. *caraboides*. 8. *praustus*. 9. *Geodromicus plagiatus*. 10. *Lesteva pubescens*. 11. *Amphichroum canaliculatum*. 12. *Acidota crenata*, 13. *cruentata*. 14. *Arpedium brachypterum*, 15. *quadrum*. 16. *Olophrum alpinum*, 17. *piceum*. 18. *Lathrimaeum atrocephalum*. 19. *Deliphrum tectum*. 20. *Phyllodrepeida crenata*. 21. *Orochares angustata*. 22. *Micralymma marinum*.



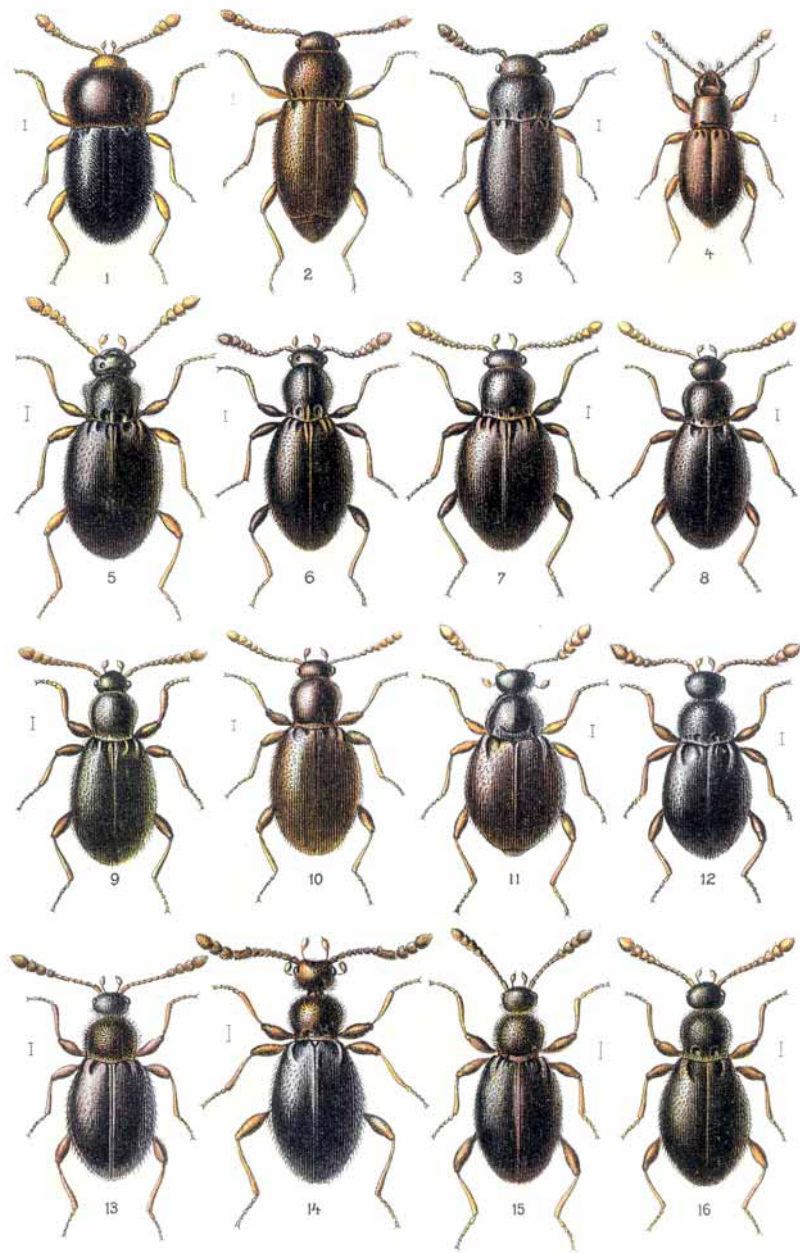
1. *Xylodromus testaceus*, 2. *depressus*. 3. *Phloeostiba plana*. 4. *Phloeonomus monilicornis*, 5. *pusillus*. 6. *Omalium rivulare*, 7. *oxyacanthae*. 8. *Phyllodrepa melanocephala*, 9. *ioptera*, 10. *Acrolocha striata*. 11. *Acrulia inflata*. 12. *Anthobium florale*, 13. *minutum*, 14. *signatum*, 15. *limbatum*, 16. *ophthalmicum*, 17. *longipenne*, 18. *alpinum*, 19. *anale*. 20. *Proteinus brachypterus*. 21. *Megarthritis depressus*, 22. *sinuocollis*, 23. *denticollis*. 24. *Phloeobium clypeatum*. 25. *Micropeplus porcatus*, 26. *fulvus*.



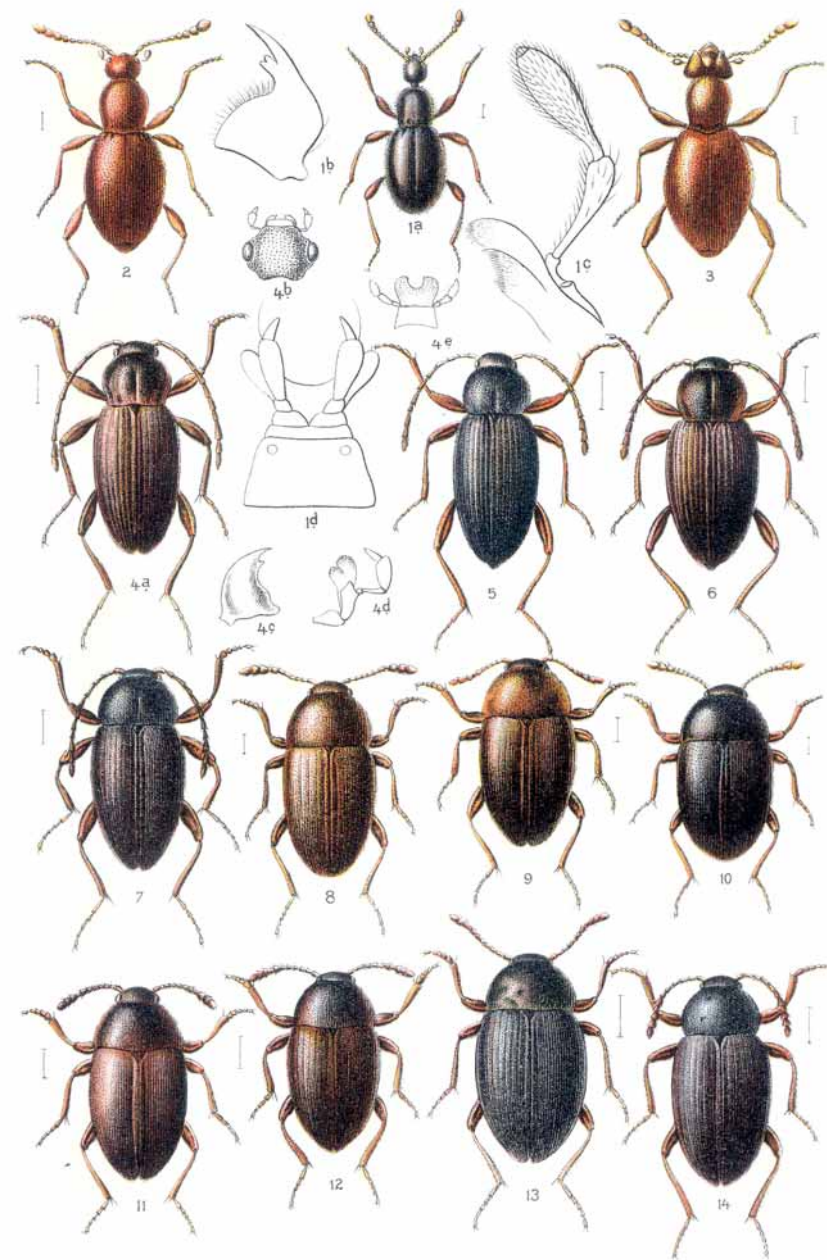
1. *Euplectus Fischeri*, 2. *nanus*, 3. *sanguineus*, 4. *signatus*, 5. *Karsteni*. 6. *Biblioplectus ambiguus*. 7. *Biblioporus bicolor*. 8. *Trimium brevicorne*. 9. *Trichonyx sulcicollis*. 10. *Batrisodes oculatus*. 11. *Bryaxis sanguinea*. 12. *Reichenbachia antennata*, 13. *Lefebvrei*, 14. *xanthoptera*, 15. *juncorum*.



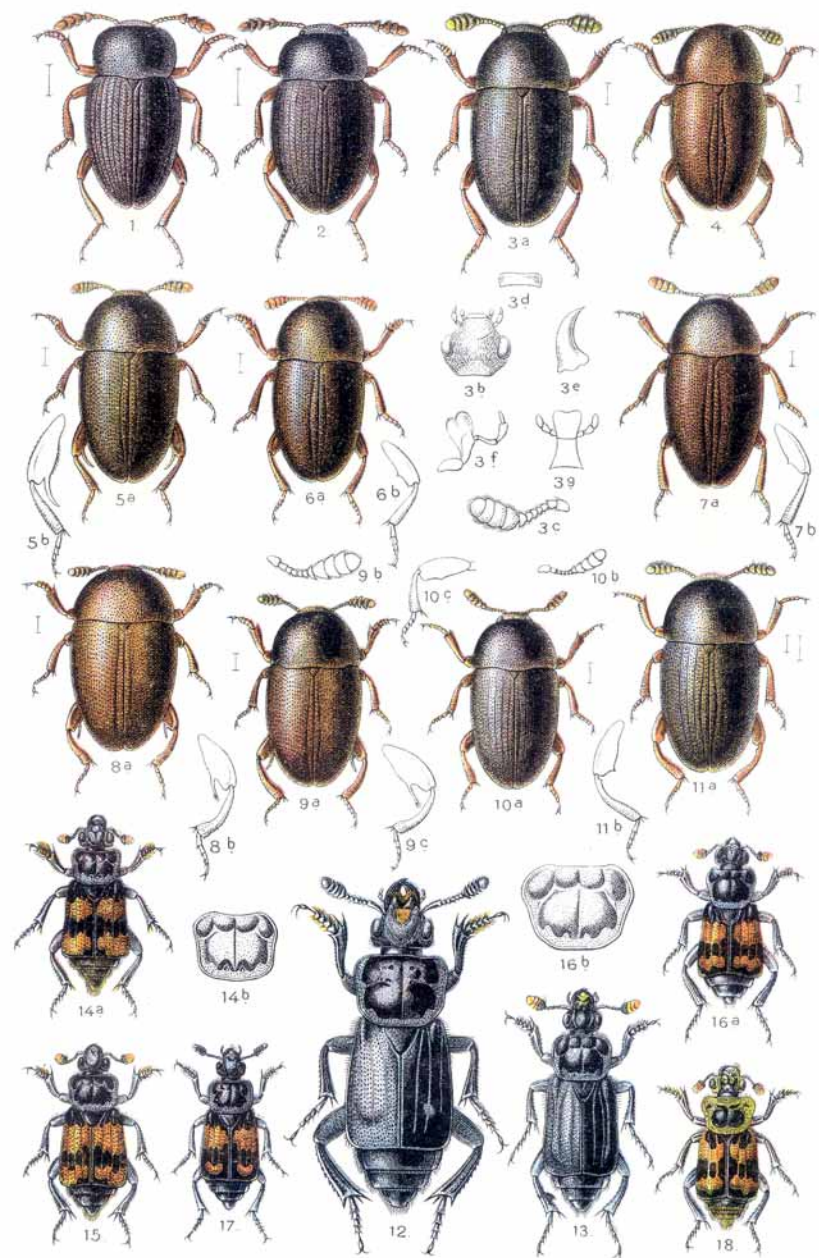
1. *Bythinus puncticollis*, 2. *nigripennis*, 3. *Burelli*, 4. *securiger*, 5. *nodicornis*, 6. *clavicornis*, 7. *Curtisi*, 8. *crassicornis*. 9. *Tychus niger*. 10. *Pselaphus Heisei*. 11. *Chennium bituberculatum*. 12. *Centrotoma lucifuga*. 13. *Ctenistes palpalis*. 14. *Tyrus mucronatus*. 15. *Claviger testaceus*.



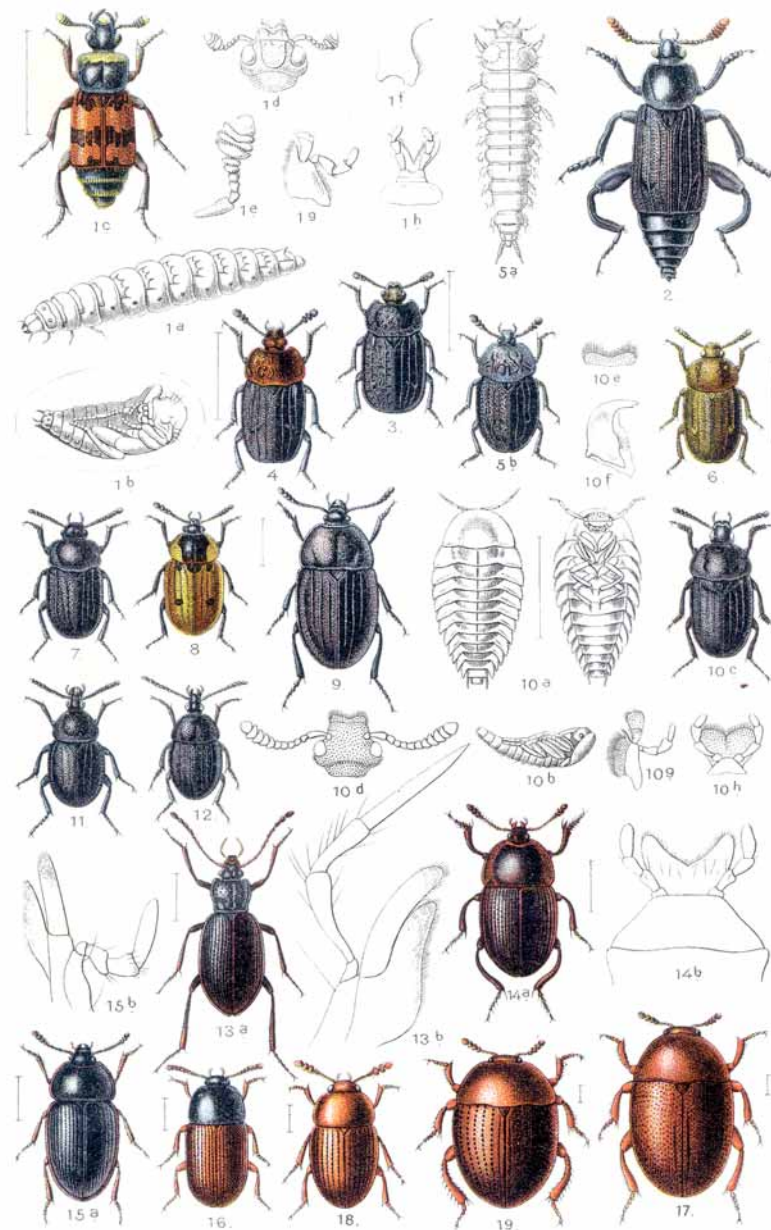
1. *Cephennium thoracicum*. 2. *Euthia plicata*, 3. *scydaenoides*. 4. *Euthiconus conicicollis*. 5. *Neuraphes angulatus*, 6. *clongatulus*. 7. *Stenichnus scutellaris*, 8. *pusillus*, 9. *collaris*, 10. *exilis*. 11. *Euconnus claviger*, 12. *Wetterhali*, 13. *hirticollis*, 14. *Motschulskyi*, 15. *denticornis*, 16. *pubicollis*.



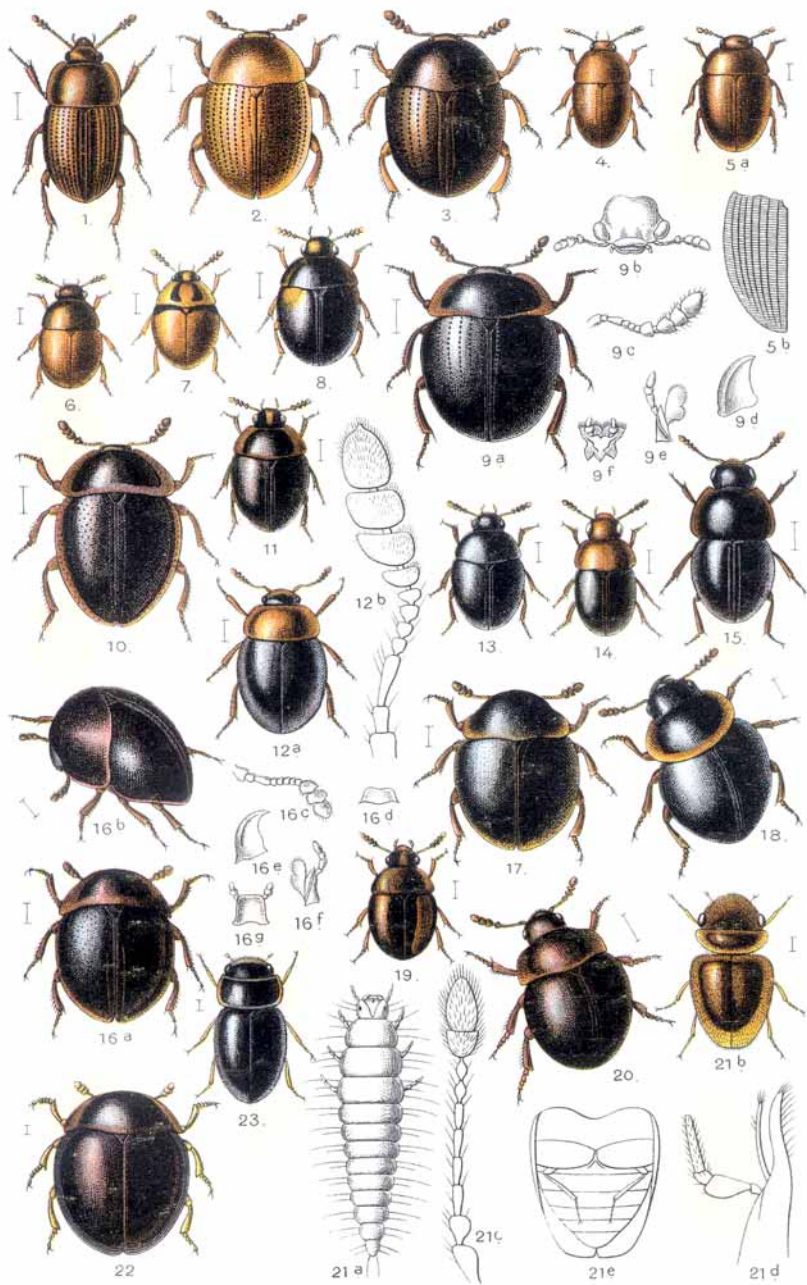
1. *Scydaenus tarsatus*, 2. *rufus*, 3. *Hellwigi*. 4. *Choleva elongata*, 5. *cisteloides*, 6. *spadicea*, 7. *agilis*. 8. *Nargus Wilkini*, 9. *velox*, 10. *anisotomoides*. 11. *Catops fumatus*, 12. *fuscus*, 13. *picipes*, 14. *nigricans*.



1. *Catops nigrita*, 2. *chrysoloides*. 3. *Colon clavigerum*, 4. *affine*, 5. *dentipes*,
6. *angulare*, 7. *brunneum*, 8. *calcaratum*, 9. *appendiculatum*, 10. *viennense*, 11. *bidentatum*.
12. *Necrophorus germanicus*, 13. *humator*, 14. *interruptus*, 15. *investigator*, 16. *sepultor*,
17. *vespilloides*, 18. *vestigator*.



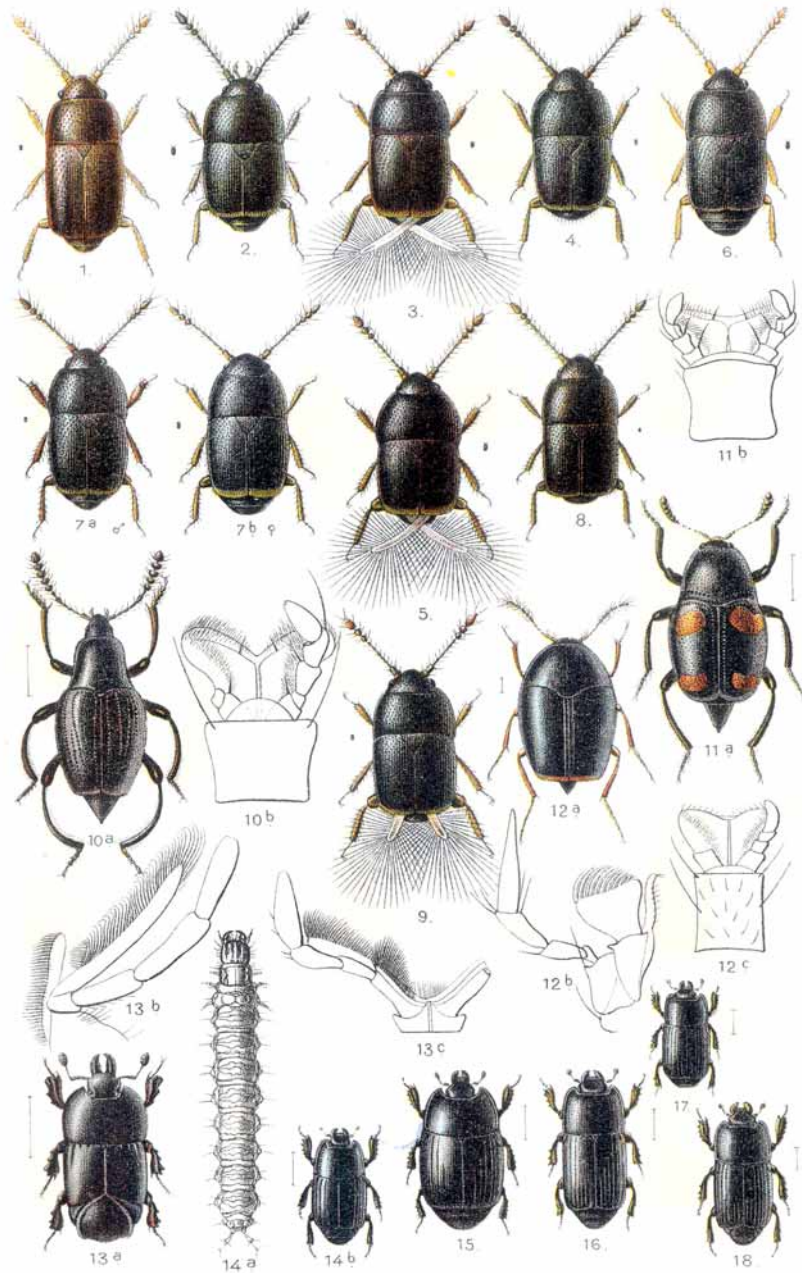
1. *Necrophorus vespillo*. 2. *Necrodes littoralis*. 3. *Thanatophilus rugosus*, 4. *sinuatus*.
5. *Oceoptoma thoracica*. 6. *Blitophaga opaca*, 7. *undata*. 8. *Xylodrepa quadripunctata*.
9. *Silpha carinata*, 10. *obscura*. 11. *Abiattaria laevigata*. 12. *Phosphuga atrata*.
13. *Pterotoma Forsstroemi*. 14. *Necrophilus subterraneus*. 15. *Hadrambe glabra*.
16. *Agyrtes castaneus*. 17. *Hydnobius punctatus*. 18. *Liodes dubia*, 19. *brunnea*.



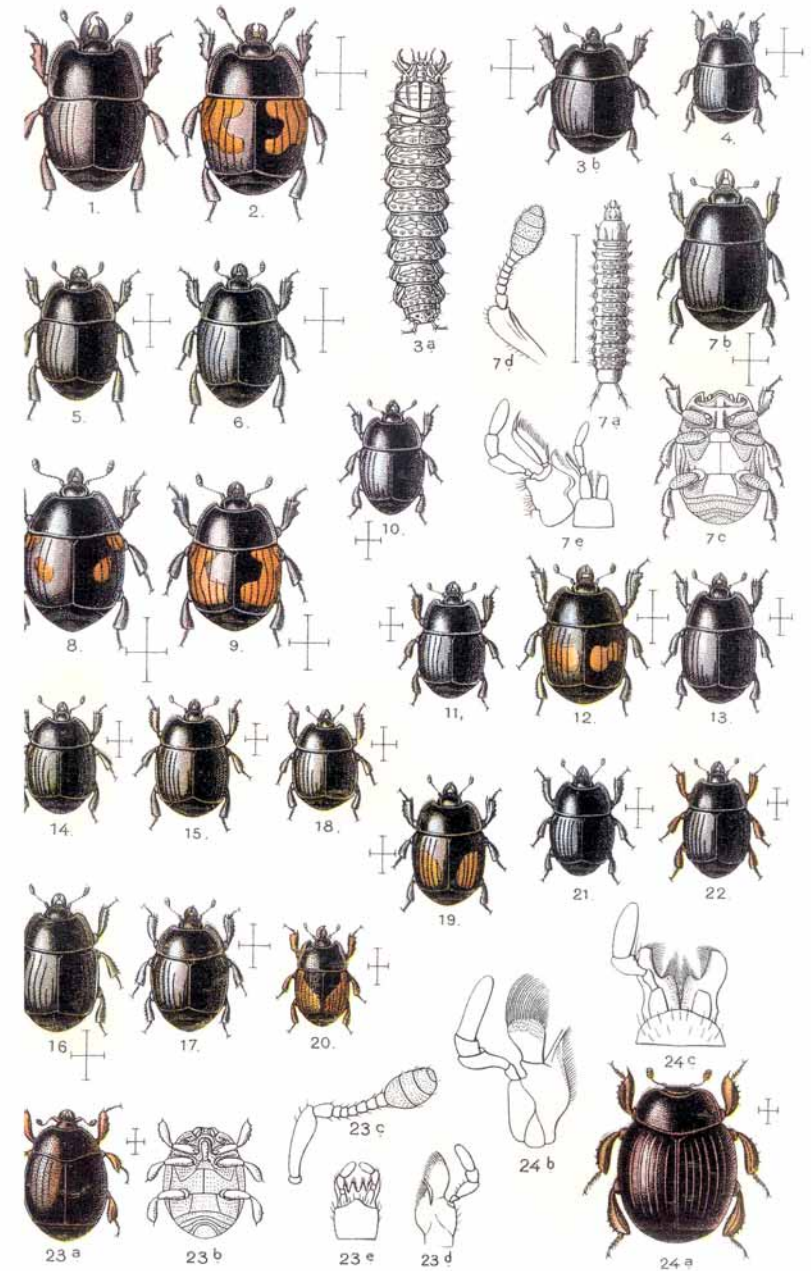
1. *Triarthron* Märkeli. 2. *Liodes* pallens, 3. *badia*. 4. *Agaricophagus* cephalotes. 5. *Colenis* immunda. 6. *Cyrtusa* subtestacea. 7. *Liadopria* sericornis. 8. *Anisotoma* humeralis, 9. *glabra*, 10. *castanea*, 11. *orbicularis*. 12. *Amphicyllis* globus, 13. *globiformis*. 14. *Agathidium* nigripenne, 15. *atrum*, 16. *seminulum*, 17. *marginatum*, 18. *mandibulare*, 19. *plagiatum*, 20. *nigrinum*. 21. *Calyptromerus* dubius. 22. *Clambus* minutus, 22. *armadillo*.



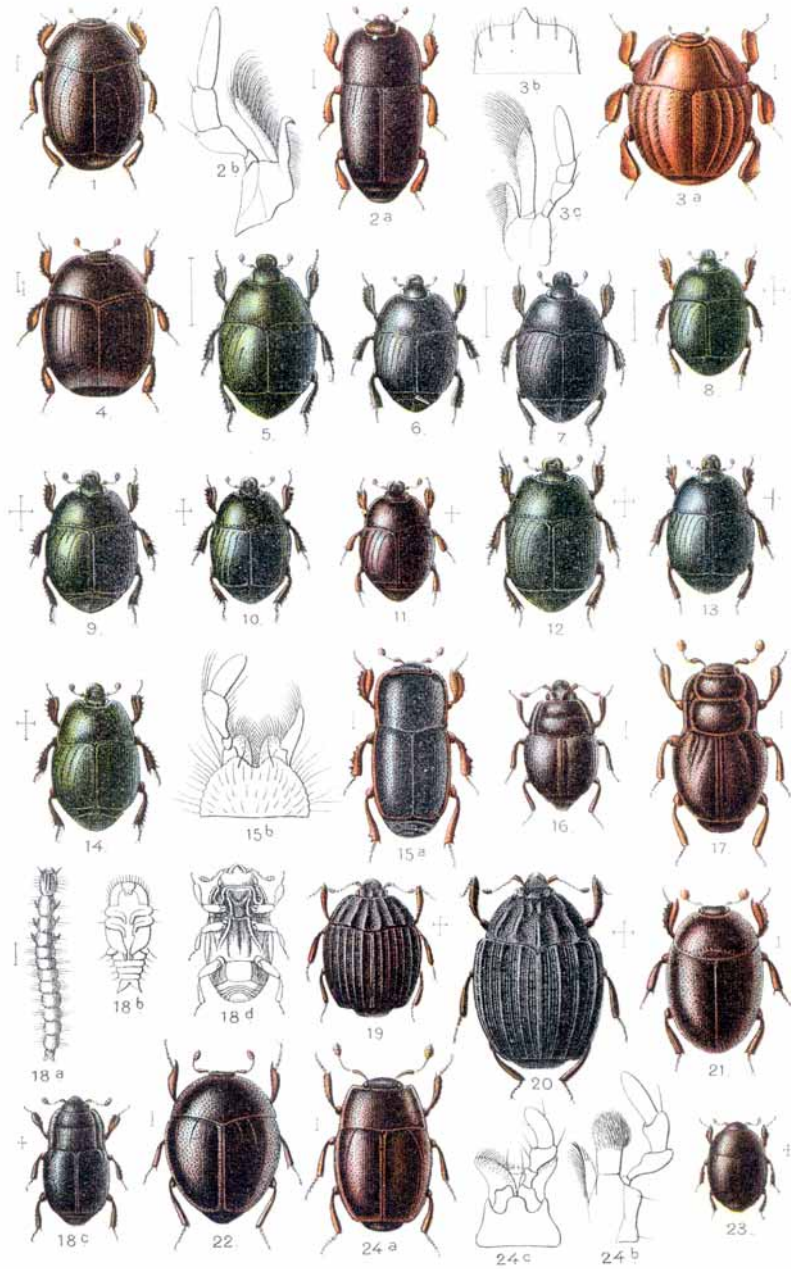
1. *Leptinus* testaceus. 2. *Sericoderus* lateralis. 3. *Orthoperus* atomarius. 4. *Sphaerius* acaroides. 5. *Nossidium* pilosellum. 6. *Ptenidium* Gressneri, 7. *laevigatum*, 8. *pusillum*, 9. *punctatum*, 10. *nitidum*. 11. *Millidium* minutissimum. 12. *Ptilium* exaratum, 13. *myrmecophilum*. 14. *Oligella* foveolata. 15. *Euryptilium* saxonicum. 16. *Ptiliolium* Spencei, 17. *Kunzei*. 18. *Actidium* Boudieri. 19. *Ptinella* testacea, 20. *aptera*, 21. *tenella*.



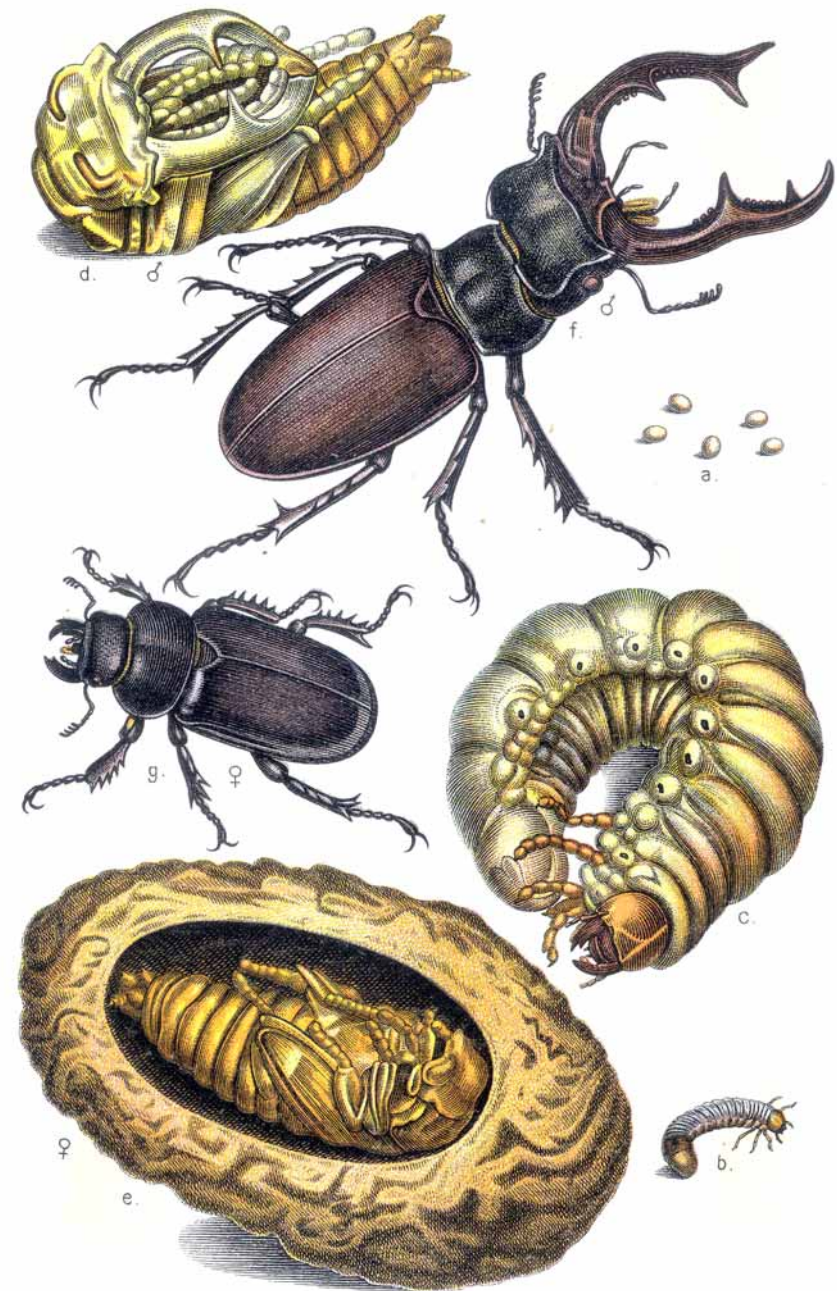
1. *Pteryx suturalis*. 2. *Acrotrichis grandicollis*. 3. *Montandoni*. 4. *thoracica*. 5. *ptomaria*. 6. *intermedia*. 7. *brevipennis*. 8. *Chevolati*. 9. *sericans*. 10. *Scaphium immaculatum*. 11. *Scaphidium quadrimaculatum*. 12. *Scaphosoma agaricinum*. 13. *Hololepta plana*. 14. *Platysoma compressum*. 15. *frontale*. 16. *oblongum*. 17. *angustatum*. 18. *lineare*.



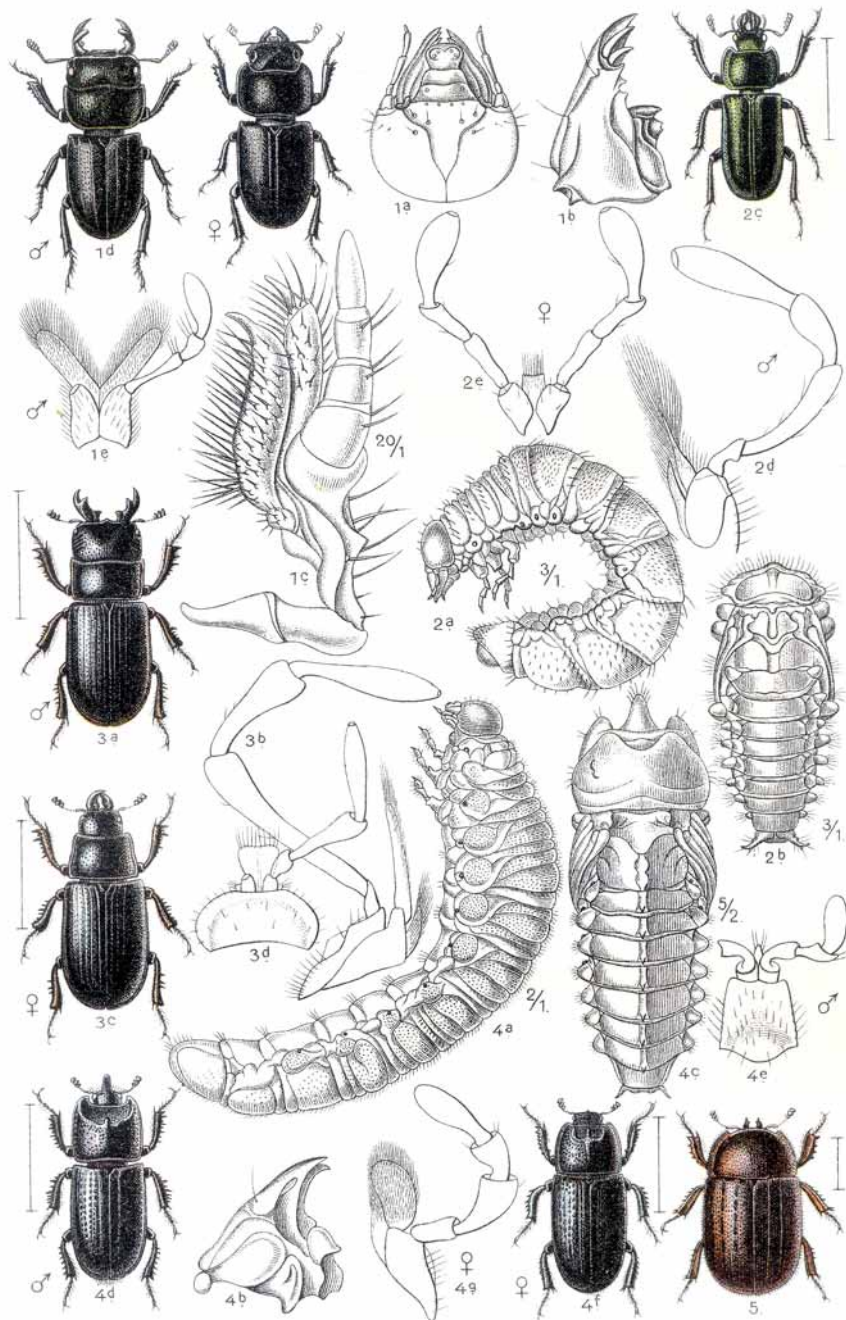
chylister inaequalis. 2. *Hister quadrimaculatus*. 3. *unicolor*. 4. *helluo*. 5. *terricola*. 6. *laverinus*. 7. *merdarius*. 8. *quadrinotatus*. 9. *sinuatus*. 10. *funestus*. 11. *bisexstriatus*. 12. *netarius*. 13. *stercorarius*. 14. *marginatus*. 15. *ruficornis*. 16. *neglectus*. 17. *ventralis*. 18. *rbonarius*. 19. *purpurascens*. 20. *bimaculatus*. 21. *duodecimstriatus*. 22. *corvinus*. 23. *Dendrophilus punctatus*. 24. *pygmaeus*.



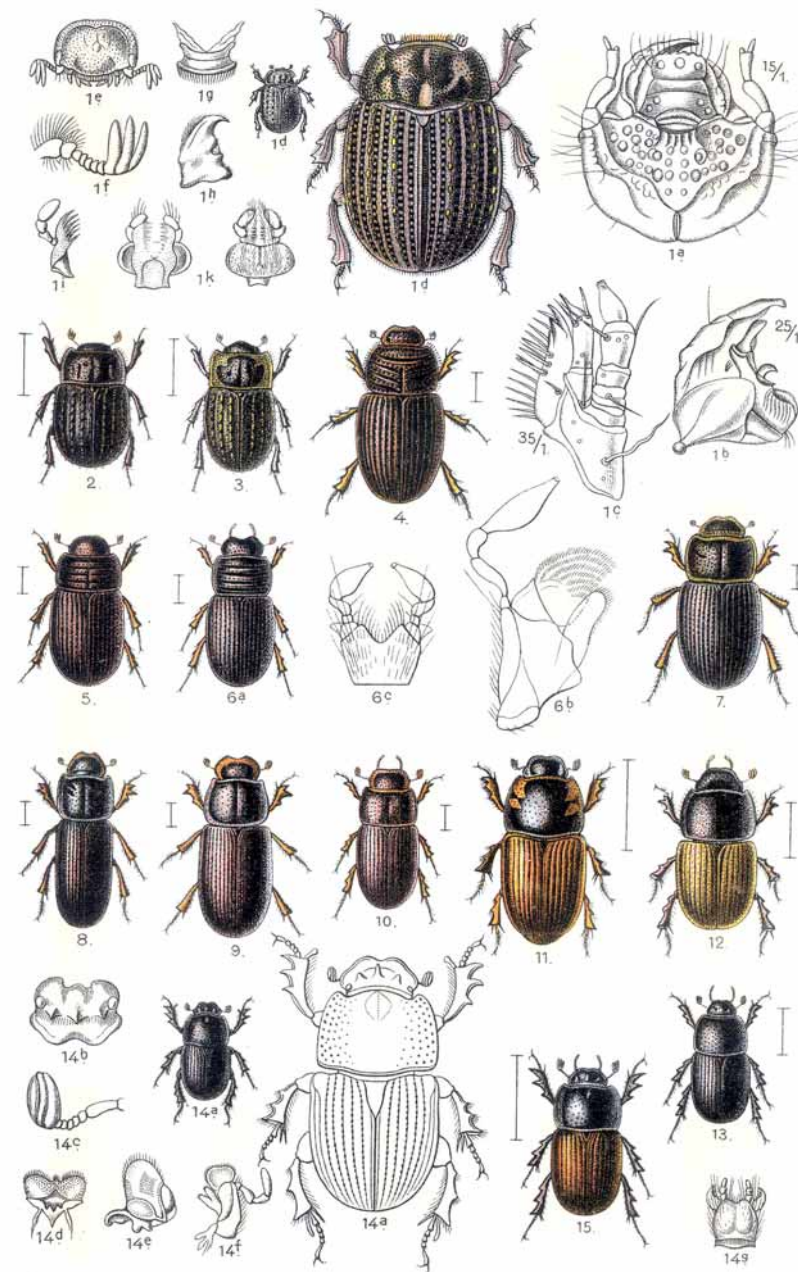
1. *Cissister minima*. 2. *Paromalus parallelepipedus*. 3. *Hetaerius ferrugineus*.
 4. *Myrmetes piceus*. 5. *Saprinus semipunctatus*, 6. *semistriatus*, 7. *detersus*, 8. *virescens*,
 9. *acenus*, 10. *conjungens*, 11. *rufipes*, 12. *quadristriatus*, 13. *metallicus*, 14. *rugifrons*.
 15. *Teretrius picipes*. 16. *Plegaderus caesus*, 17. *dissectus*, 18. *discisus*. 19. *Ontho-*
phitus striatus, 20. *sulcatus*. 21. *Bacanius rhombophorus*. 22. *Abraeus globulus*,
 23. *globosus*. 24. *Acritus punctum*.



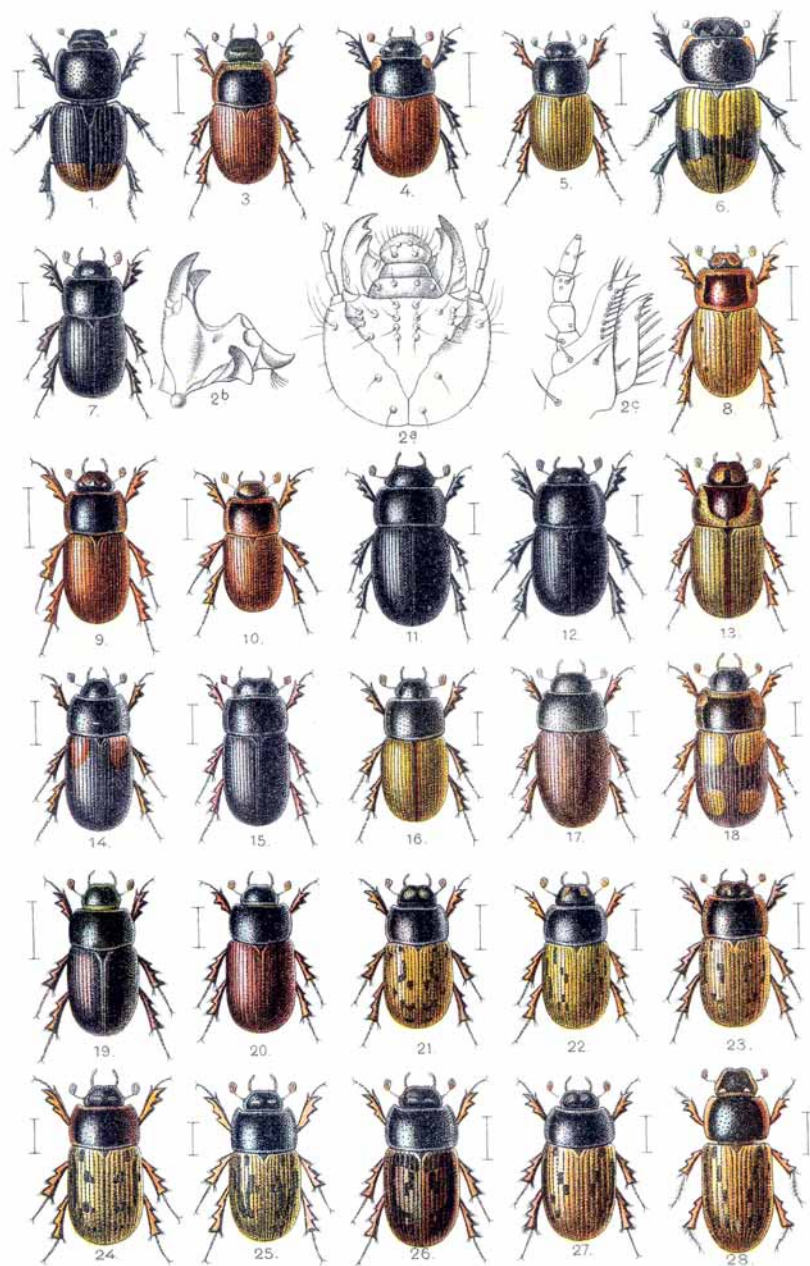
Lucanus cervus L., Hirschkäfer. a) Eier, b u. c) Larven, d u. e) männl. u. weibl. Puppe,
 letztere im geöffneten Cocon, f u. g) Männchen u. Weibchen. (Kopie nach Taf. IV im
 2. Band der „Insekten-Belustigung“ von Aug. Joh. Rösel von Rosenhof. Nürnberg, 1749.)



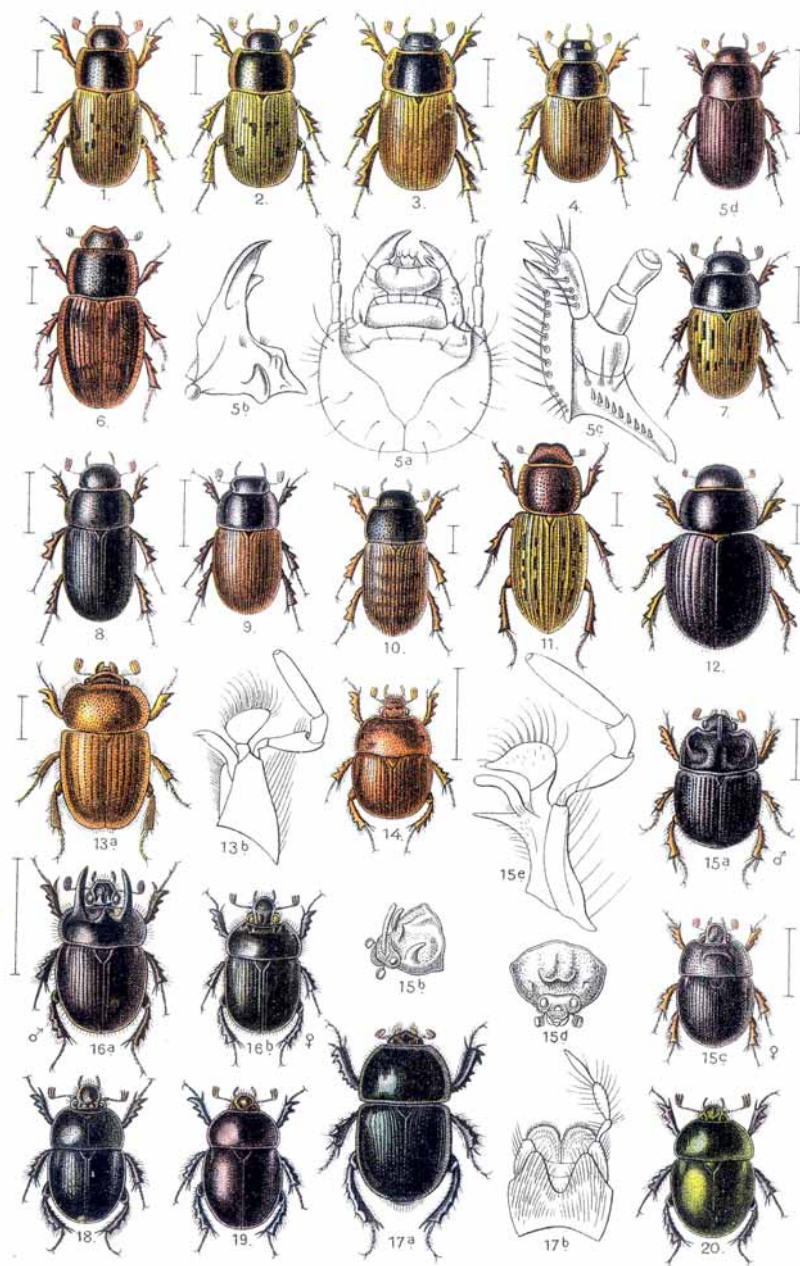
1. *Dorcus parallelepipedus*. 2. *Systemocerus caraboides*. 3. *Ceruchus chrysomelinus*.
4. *Sinodendron cylindricum*. 5. *Aesalus scarabaeoides*.



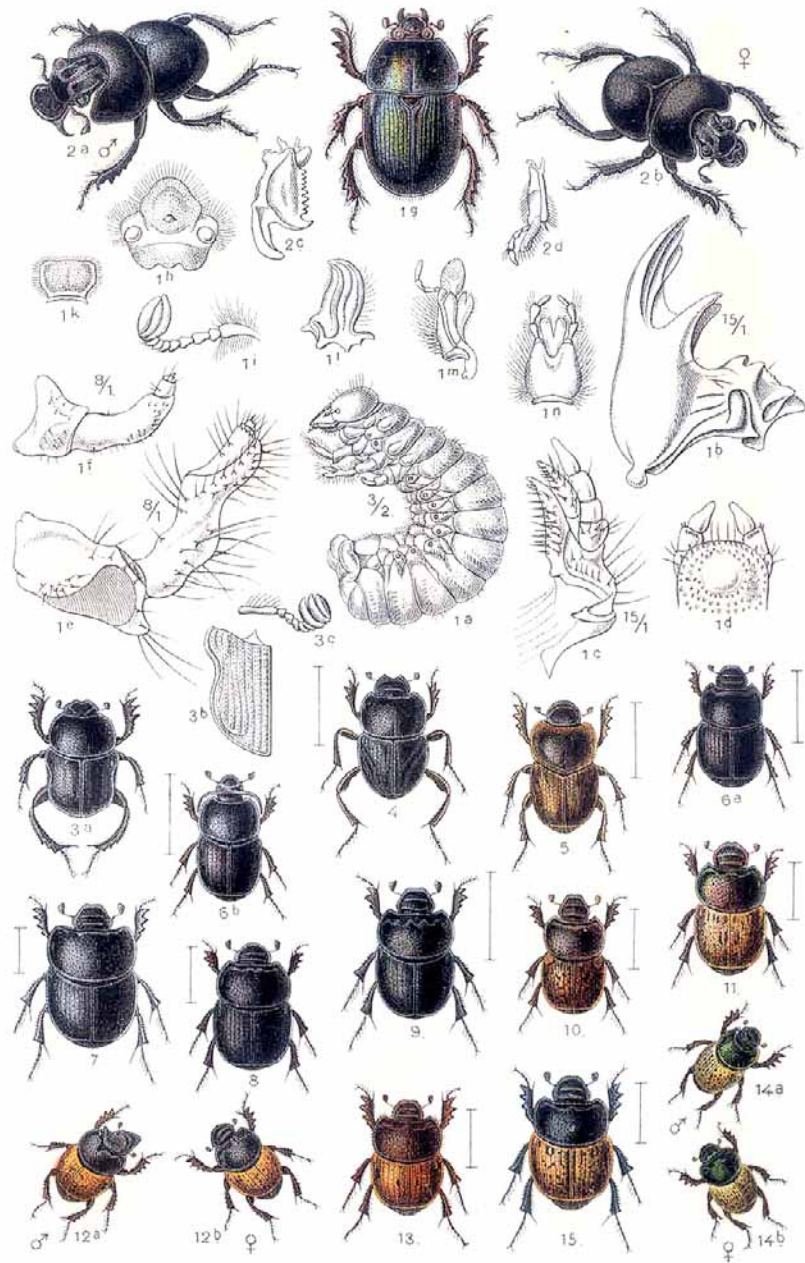
1. *Trox sabulosus*, 2. *hispidus*, 3. *scaber*. 4. *Psammobius porcicollis*, 5. *sulcicollis*.
6. *Rhyssemus asper*. 7. *Diastictus vulneratus*. 8. *Pleurophorus caesus*, 9. *sabulosus*.
10. *Oxyomus silvestris*. 11. *Aphodius scrutator*, 12. *erraticus*, 13. *subterraneus*,
14. *fossor*, 15. var. *silvaticus*.



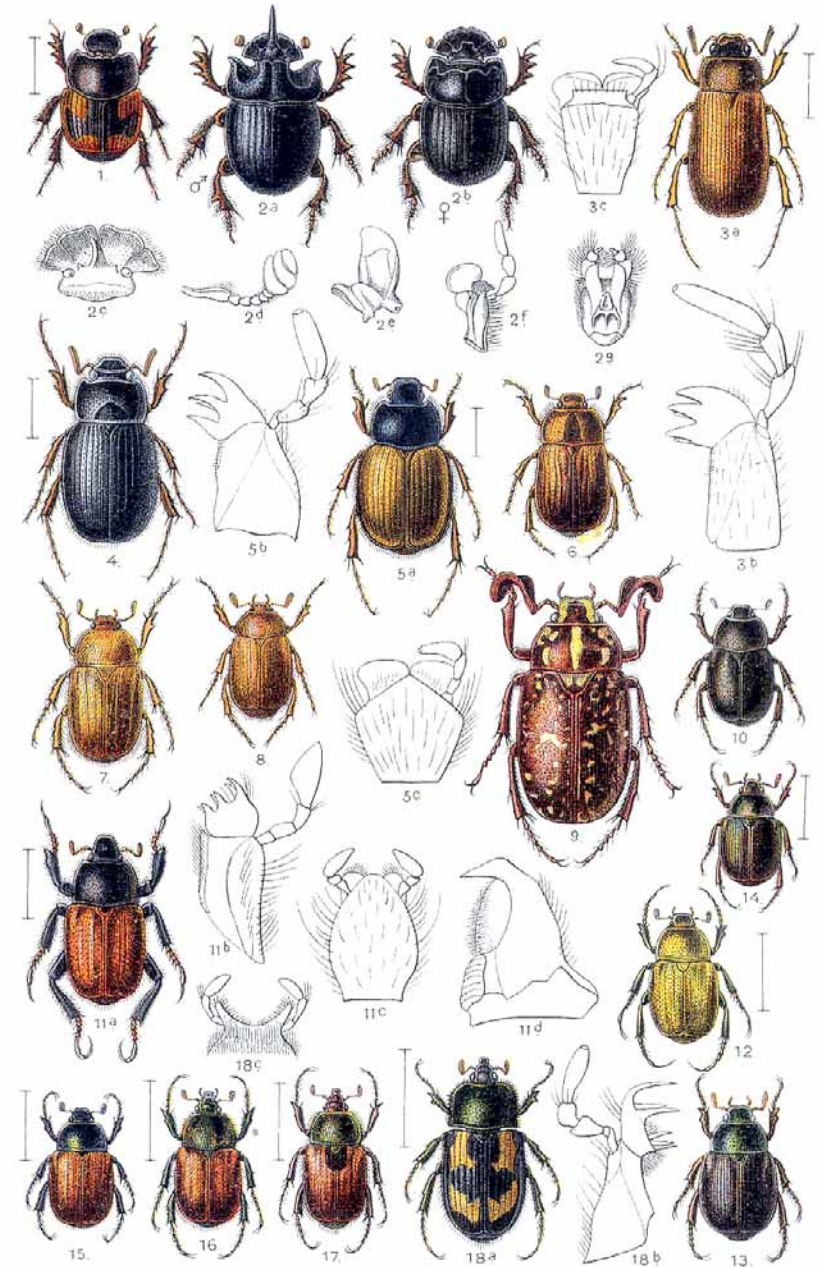
1. *Aphodius haemorrhoidalis*, 2. *brevis*, 3. *foetens*, 4. *fimetarius*, 5. *scybalarius*, 6. *conjugatus*, 7. *granarius*, 8. *sordidus*, 9. *rufus*, 10. *nitidulus*, 11. *gibbus*, 12. *ater*, 13. *lividus*, 14. *varians*, 15. *niger*, 16. *meridius*, 17. *scrofa*, 18. *quadriguttatus*, 19. *obscurus*, 20. *porcus*, 21. *pictus*, 22. *sticticus*, 23. *melanostictus*, 24. *inquinatus*, 25. var. *nubilus*, 26. var. *confluens*, 27. *tessulatus*, 28. *conspurcatus*.



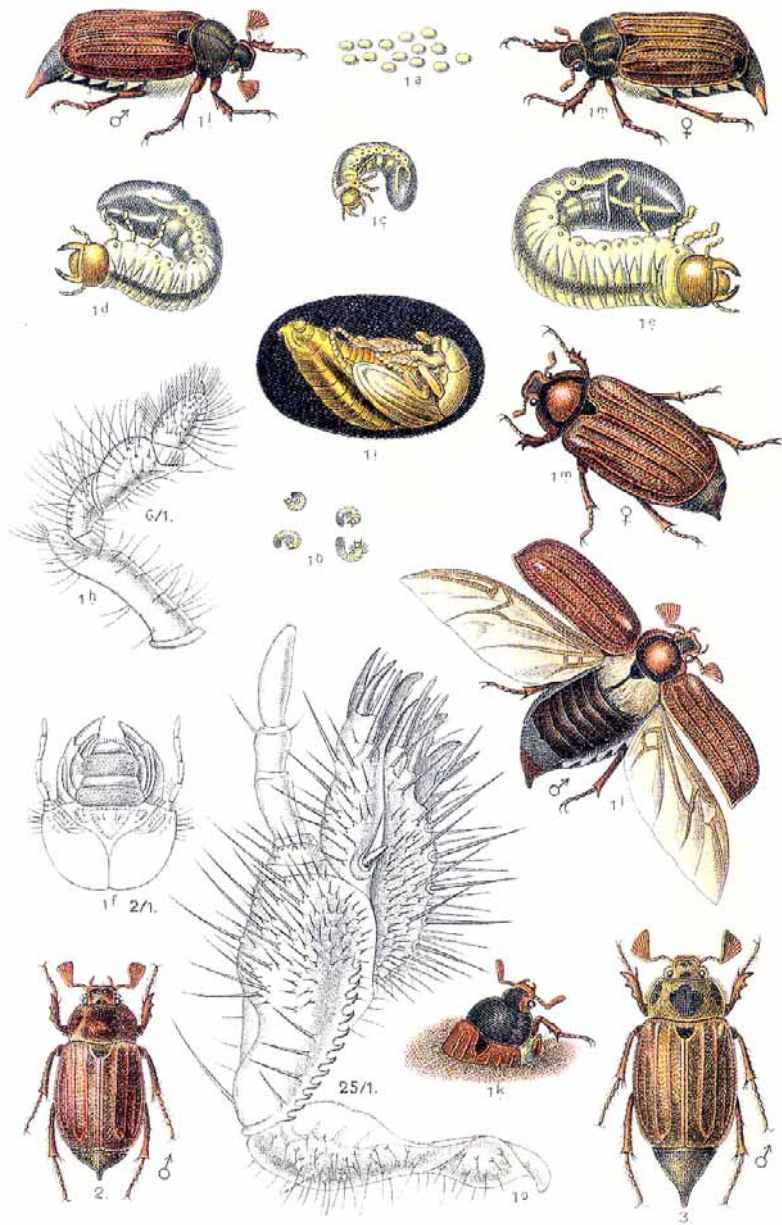
1. *Aphodius oblitteratus*, 2. *contaminatus*, 3. *prodromus*, 4. *consputus*, 5. *rufipes*, 6. *Zenkeri*, 7. *luridus*, 8. var. *nigripes*, 9. *depressus*, 10. *Heptaulacus testudinarius*, 11. *sus*, 12. *Aegialia arenaria*, 13. *Ochodaeus chrysomeloides*, 14. *Bolboceras unicolor*, 15. *Odontaeus armiger*, 16. *Ceratophyus Typhoeus*, 17. *Geotrupes mutator*, 18. *siivaticus*, 19. *vernalis*, 20. var. *autumnalis*.



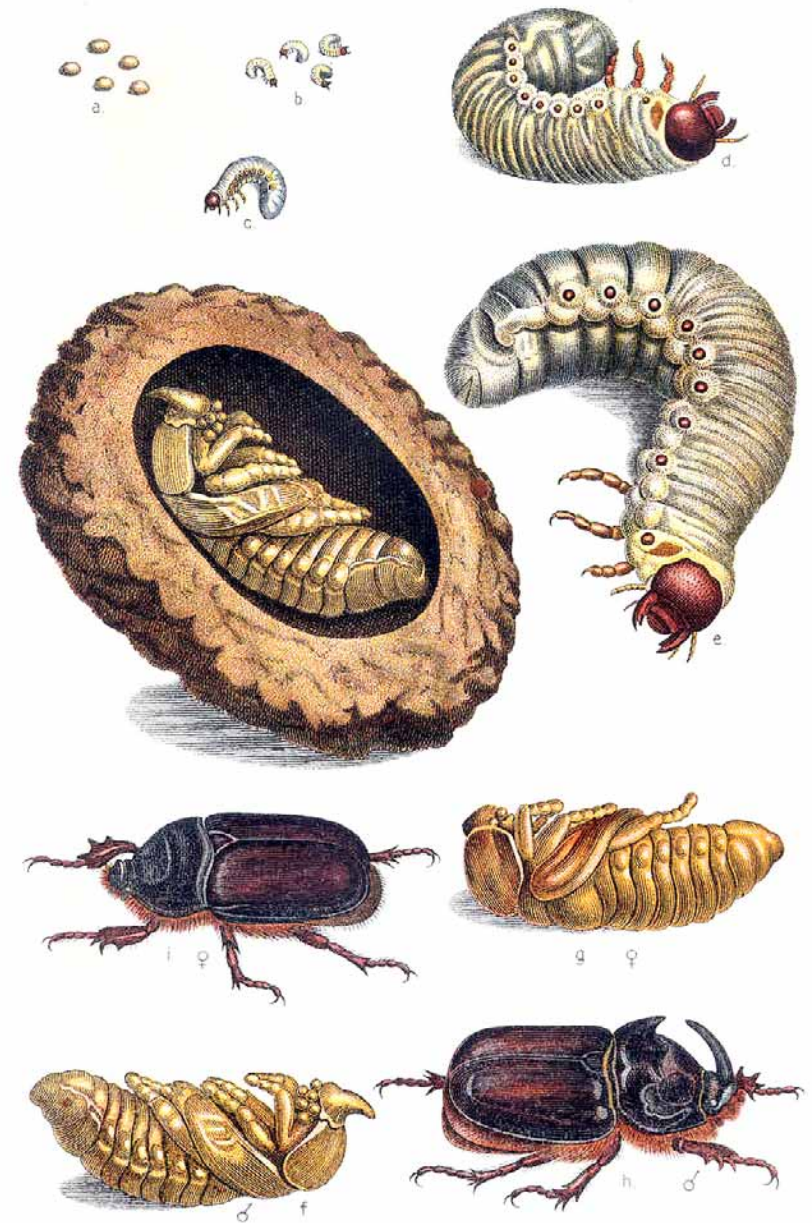
1. *Geotrupes stercorarius*. 2. *Lethrus aperus*. 3. *Gymnopleurus Mopsus*. 4. *Sisyphus Schaefferi*. 5. *Oniticellus fulvus*. 6. *Onthophagus taurus*, 7. *semicornis*, 8. *verticicornis*, 9. *camelus*, 10. *fracticornis*, 11. *coenobita*, 12. *austriacus*, 13. *lemur*, 14. *vacca*, 15. *nuchicornis*.



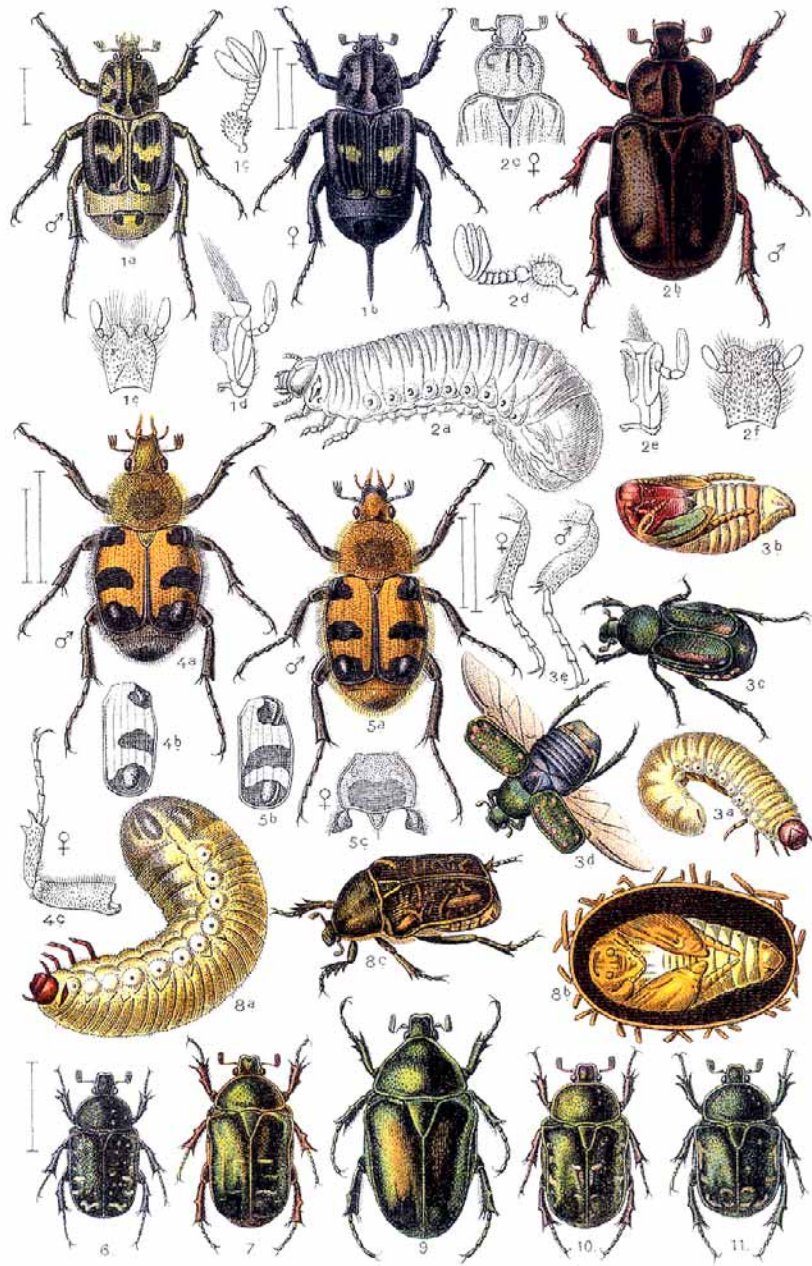
1. *Caccobius Schreberi*. 2. *Copris lunaris*. 3. *Serica brunnea*. 4. *Maladera holosericea*. 5. *Homaloptia ruricola*. 6. *Rhizotrogus aestivus*. 7. *Amphimallus solstitialis*, 8. *assimilis*. 9. *Polyphylla fullo*. 10. *Hoplia philanthus*, 11. *praticola*, 12. *farinosa*. 13. *Anomala aurata*, 14. *aenea*. 15. *Phyllopertha horticola*. 16. 17. *Anisoplia segetum*, 18. *cyathigera*.



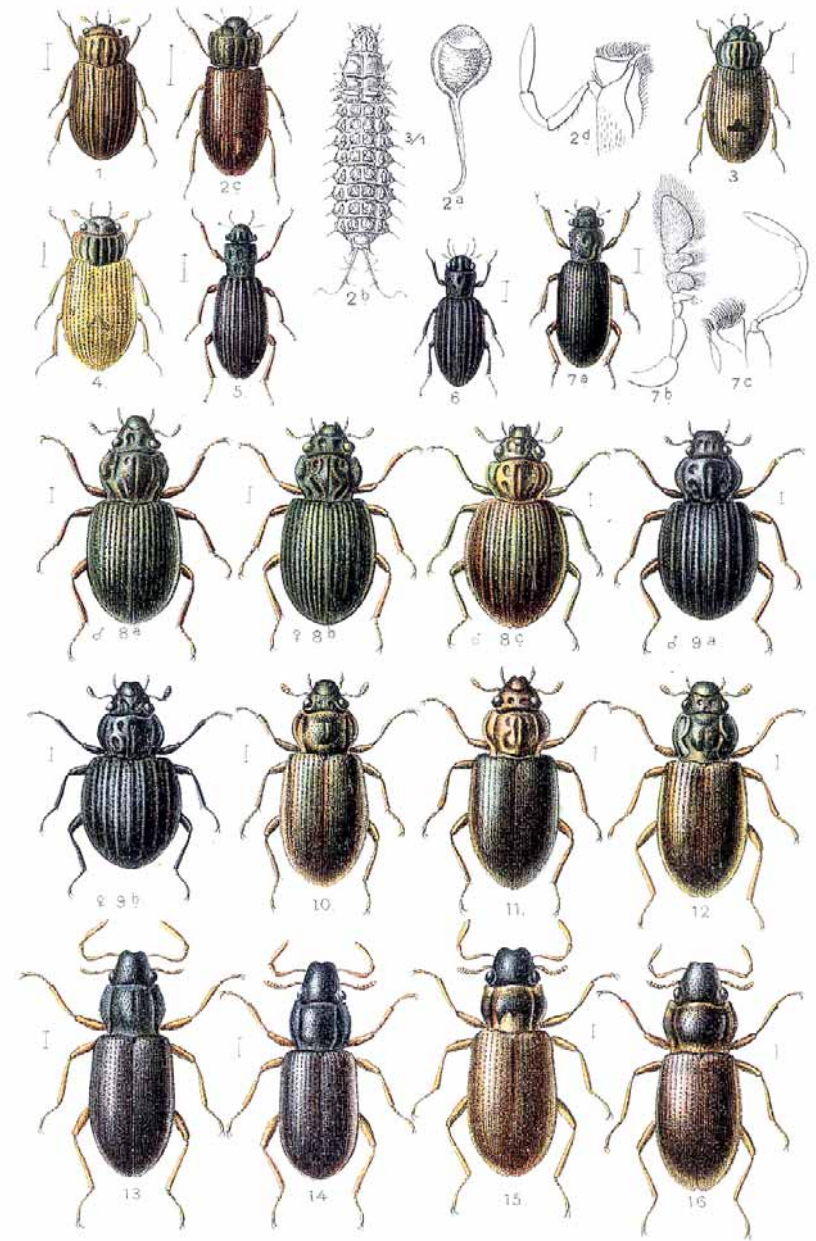
Melolontha, Maikäfer. 1. *M. melolontha* (vulgaris): a) Eier, b-e) Larven, f-h) Kopf, Unterkiefer und Bein der Larve, i-l) Männchen, m u. n) Weibchen. (Fig. f-h nach Schiödte, die anderen Figuren nach Rösel von Rosenhof.) 2. *M. hippocastani*, 3. *M. pectoralis*.



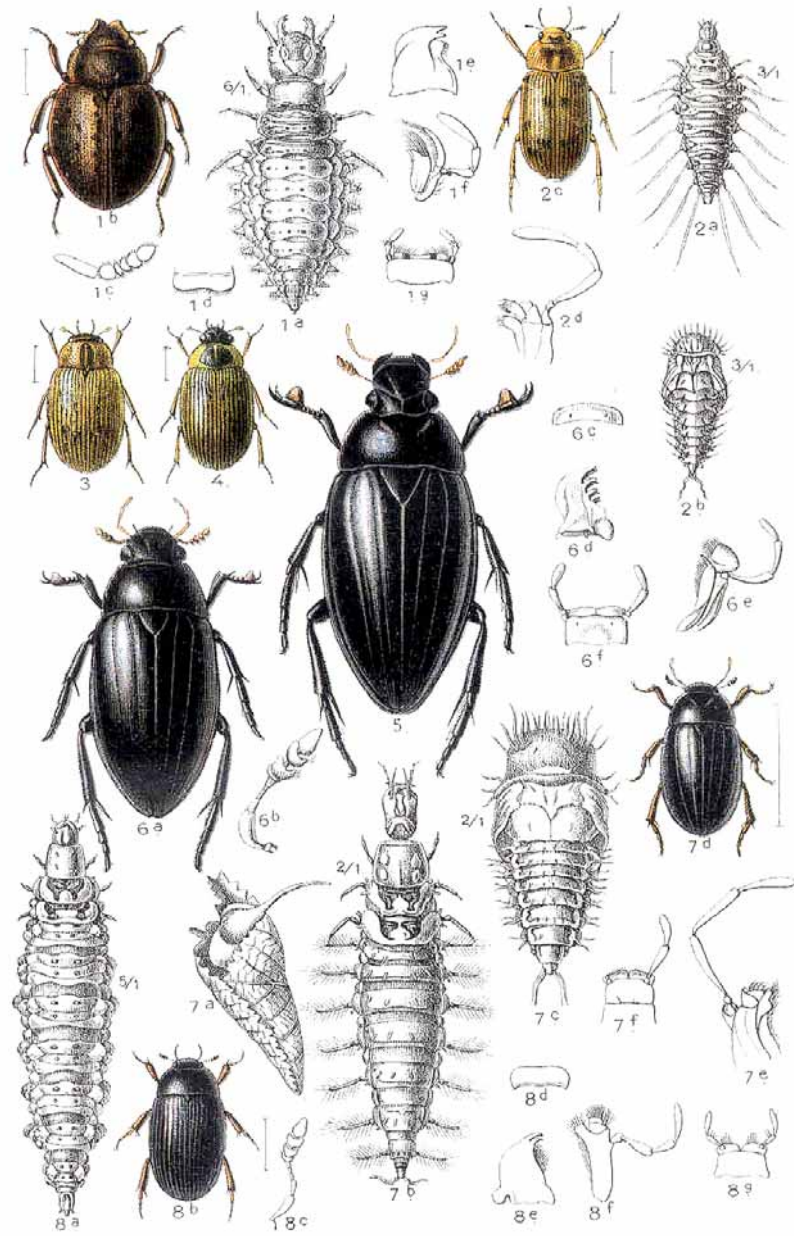
Oryctes nasicornis L., Nashornkäfer. a) Eier, b-e) Larven, f u. g) männliche und weibliche Puppe, h u. i) Männchen u. Weibchen. (Kopie nach Tab. VI u. VII im 2. Band der „Insekten-Belustigung“ von Aug. Joh. Rösel von Rosenhof. Nürnberg, 1749.)



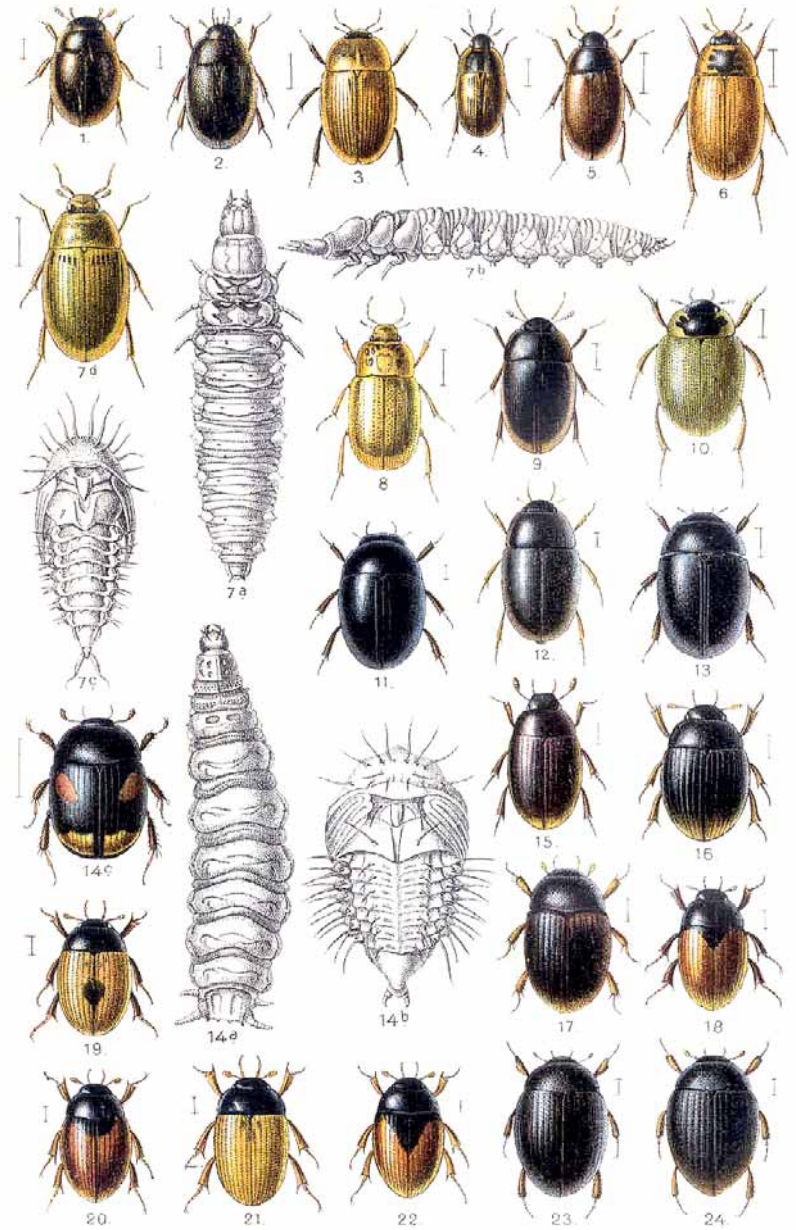
1. *Valgus hemipterus*. 2. *Osmoderma eremita*. 3. *Gnorimus nobilis*. 4. *Trichius fasciatus*, 5. *zonatus*. 6. *Oxythyrea funesta*. 7. *Cetonia aurata*. 8. *Liocola marmorata*. 9. *Potosia aeruginosa*, 10. *cuprea*, 11. *hungarica*.



1. *Helophorus nubilus*, 2. *aquaticus*, 3. *griseus*, 4. *granularis*. 5. *Hydrochus elongatus*, 6. *carinatus*, 7. *angustatus*. 8. *Ochthebius exculptus*, 9. *gibbosus*, 10. *impressus*, 11. *foveolatus*, 12. *marinus*. 13. *Hydraena riparia*, 14. *gracilis*, 15. *pulchella*, 16. *atricapilla*.



1. *Spercheus emarginatus*. 2. *Berosus spinosus*. 3. *signaticollis*. 4. *luridus*. 5. *Hydrous piceus*. 6. *aterrimus*. 7. *Hydrophilus caraboides*. 8. *Hydrobius fuscipes*.



1. *Anacaena globulus*. 2. *Paracymus aeneus*. 3. *Philydrus melanocephalus*. 4. *coarctatus*. 5. *frontalis*. 6. *bicolor*. 7. *testaceus*. 8. *Helochaeres lividus*. 9. *Cymbiodyta marginella*. 10. *Laccobius nigriceps*. 11. *Chaetarthria seminulum*. 12. *Limnebius nitidus*. 13. *Caelostoma orbiculare*. 14. *Sphaeridium scarabaeoides*. 15. *Cercyon littoralis*. 17. *haemorrhoidalis*. 18. *melanocephalus*. 19. *unipunctatus*. 20. *quisquilius*. 21. *terminatus*. 22. *pygmaeus*. 23. *Megasternum boletophagum*. 24. *Cryptopleurum crenatum*.