

A new subspecies of *Cortodera colchica* (Faldermann, 1836) from Lebanon (Coleoptera, Cerambycidae)

M.L. Danilevsky¹, T. Németh²

¹A.N. Severtzov Institute of Ecology and Evolution, Russian Academy of Sciences
Leninsky prospect 33, Moscow 119071 Russia
e-mail: danilevskym1@rambler.ru, danilevsky@cerambycidae.net

²Hungarian Natural History Museum, Department of Zoology
Baross u.13, Budapest H-1088 Hungary
e-mail: nemeth.tamas@nhmus.hu

Key words: new subspecies, taxonomy, Cerambycidae, Lepturinae, *Cortodera*, Lebanon.

Abstract: *Cortodera colchica libanensis* Danilevsky, **ssp. n.** is described from Lebanon: Northern gov., Bcharre env., 4 km E Ariz, 34°14.645'N, 36°5.166' E, 2830 m and from Tannourine env., 2 km N Harissa, Tannourine Cedars Nat. Reserve, 34°12'28.75"N; 35°56'01"E, 1802 m and Barouk, Maasief el Mir, 1700-1950 m.

Introduction

Within the framework of a mutual agreement between the Holy Spirit University of Kaslik (USEK; Kaslik, Jounieh, Lebanon) and the Hungarian Natural History Museum (HNHM; Budapest, Hungary) for exploring biodiversity, entomological trips were organised between 19-27 May, 2015, 16-29 of June, 2016 and 1-13 May, 2017 visiting Mount Lebanon. The first author identified a new subspecies of *Cortodera* while studying the Cerambycidae materials collected in these trips.

Cortodera colchica Reitter, 1890 was described from “Caucasus, Araxesthal”. The type locality of the species is situated (Danilevsky, 2014: 176) in Nakhichevan Republic of Azerbaijan. The area of the nominative subspecies *C. c. colchica* is limited by Nakhichevan Republic and the nearest regions of Armenia (Sisian pass). It is characterized (several hundreds of specimens are known - MD) by equal number of males and females in the population, small

size of specimens, wide range of individual variability, but legs and abdomen in males are always black.

Now the species consists of 17 subspecies distributed from Caucasus to Near East (Danilevsky, 2017).

A new subspecies described below belongs to a very special group of taxa, which includes males with totally or partly red legs. Such character is very rare in *C. colchica*. Males with partly red legs are known in a single Caucasian subspecies (*C. c. bulungensis* Danilevsky, 2014 from North Caucasus, Kabardino-Balkaria) and in a single Turkish subspecies (*C. c. aksarayensis* Özdikmen & Özbek, 2012 - Aksaray, Konya, Antalya, Muş, Malatya, İçel, Sivas).

Abbreviations used in the text:

MD - collection of M.L. Danilevsky, Moscow, Russia

HNHM - Hungarian Natural History Museum, Budapest, Hungary

PCAM - private collection of András Márkus, Gyula, Hungary

PCAK - private collection of Attila Kotán, Budapest, Hungary

PCKSZ - private collection of Kálmán Székely, Budapest, Hungary

PCNN - private collection of Nabil Nemer, Tannourine, Lebanon

Material and Methods

Cortodera colchica libanensis Danilevsky, ssp. n.

Figs. 1-14

Cortodera colchica colchica, Cocquempot et al., 2016: 95; Márkus & Németh, 2016: 27.

Type locality. Lebanon, Northern gov., Bcharre env., 4 km E Ariz, 34°14.645'N, 36°5.166'E, 2830 m.

Description. The new subspecies is very close to *C. c. aksarayensis* Özdikmen & Özbek, 2012, which was described as a species from Aksaray province, but then downgraded to a subspecies rank by Danilevsky (2015).

Body considerably tapering posteriorly in males or about parallelsided in females; head rather short; last palpal joints strongly dilated apically, axe-like (in females less dilated); temples strongly angulated; antennae always totally black (in *C. c. aksarayensis* antennal bases sometimes lightened), relatively short; in males

surpassing elytral middle, in females hardly reaching elytral middle; 3rd joint about as long as 4th and shorter than 1st, which is about as long as 5th (in *C. c. aksarayensis* 3rd and 4th joints relatively longer, 3rd joint nearly as long as 1st, 4th joint a little shorter); prothorax transverse, usually less narrowed anteriorly than in *C. c. aksarayensis*; in males and in females about 1.2 times shorter than basal width; pronotum convex, with shallow depression along middle, with distinct regular punctation denser than in *C. c. aksarayensis*; central smooth line very short and narrow, sometimes indistinct; erect pronotal pubescence distinctly shorter than in *C. c. aksarayensis*; elytra in males and in females about 2 times longer, than basal width; usually black, or sometimes in males brown, or brown with black triangle behind scutellum; never brown in females; covered by short semierect black setae; elytral punctation less dense than in *C. c. aksarayensis*; legs usually black, but sometimes (in males and in females) red with dark tarsi, or red with back femora apices and darkened apices of middle and hind tibiae; abdomen always black (often red in *C. c. aksarayensis*); in males pygidium, postpygidium and last abdominal sternit rounded or with very small emarginations; in females posterior margins of last abdominal sternit also rounded or with small emarginations; body length in males: 7.2-8.0 mm, width: 2.4-2.7 mm, body length in females: 8.0-9.0 mm, width: 2.6-2.9 mm.

In general *C. c. libanensis*, **ssp. n.** is darker than *C. c. aksarayensis*; pale forms of *C. c. aksarayensis* have much lighter elytra, red abdomen, pale elytral and pronotal pubescence (never in *C. c. libanensis*, **ssp. n.**).

Material. Holotype, male, Lebanon, Northern gov., Bcharre env., 4 km E Ariz, 34°14.645'N, 36°5.166'E, 2830 m, 24.VI.2016, leg. P. Nemes - HNHM; 242 paratypes with same label, but leg. M. Boustani, A. Kotán, P. Nemes, T. Németh, M. Rehayem & W. Yammine (227 males, 15 females): 6 males, 2 females - MD; 52 males, 3 females - HNHM; 151 males, 10 females - PCAK; 12 males - PCAM; 5 males - PCKSZ; 3 paratypes (2 males, 1 female): Lebanon, Tannourine, 30.IV.2016, leg. N. Nemer - PCNN; 1 paratype (male), Lebanon, Northern gov., Tannourine env., 2 km N Harissa, Tannourine Cedars Nat. Reserve, 34°12'28.75"N, 35°56'5.01"E, 1802 m, from *Centaurea*, 11.V.2017, leg. P. Nemes -

HNHM; 3 paratypes (1 male, 2 females), Barouk, Maasief el Mir, 1700-1950 m, 20.V.2006, T. Tichy leg. - PCAM.

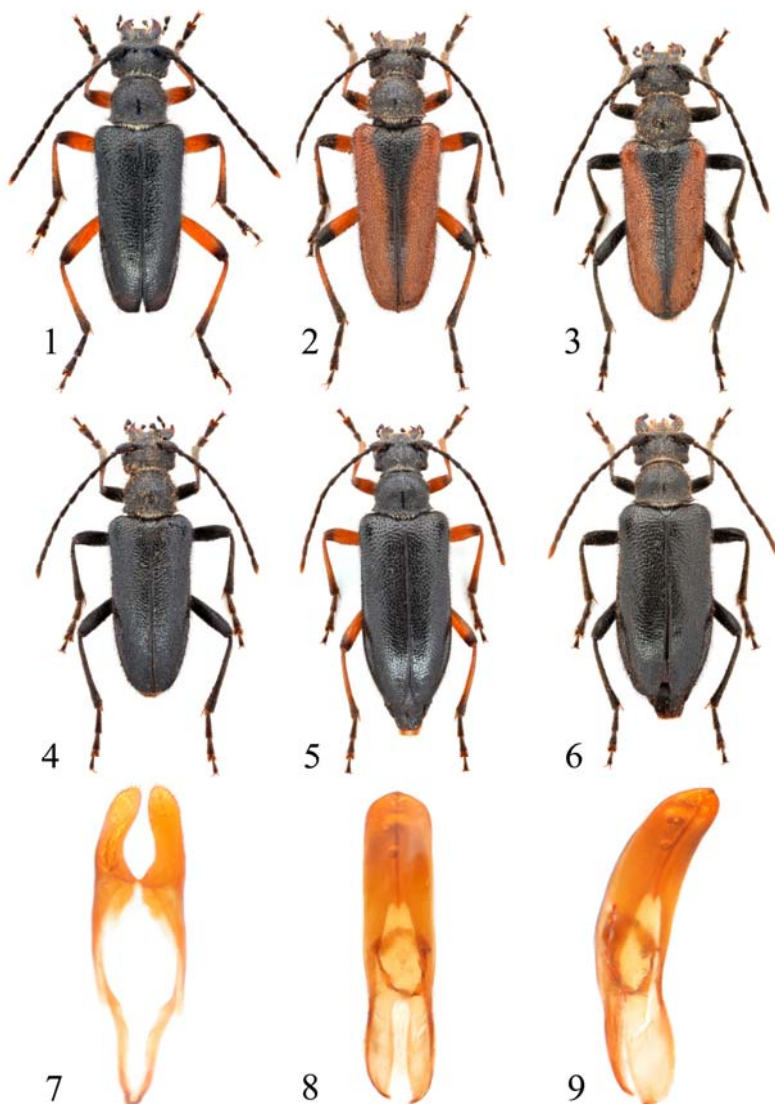
Distribution. Three populations from Lebanon are known: Northern gov., Bcharre env., 4 km E Ariz, 34°14.645'N, 36°5.166' E, 2830 m; Tannourine env., 2 km N Harissa, Tannourine Cedars Natural Reserve, 34°12'28.75"N, 35°56'5.01"E, 1802 m; Barouk, Maasief el Mir, 1700-1950 m

Biology. Imagoes are active in May and June. The beetles were observed on flowers of *Centaurea triumfettii* (det. C. Tawk).

Acknowledgements. Thanks are due to Nabil Nemer (USEK) and Charbel Tawk (Committee of Cedar Forest Friends, Bcharre, Lebanon) for the organisation of the travel in 2015, 2016 and 2017, the accomplishment of the project and hospitality. We are grateful to Mira Boustani, Attila Kotán, Petra Nemes, Martine Rehayem, Challitah Tanios and Wael Yammine for the tireless and unselfish help in the field work. We thank Gábor Csorba (deputy general director, HNHM) without whom these trips could not be realized.

REFERENCES

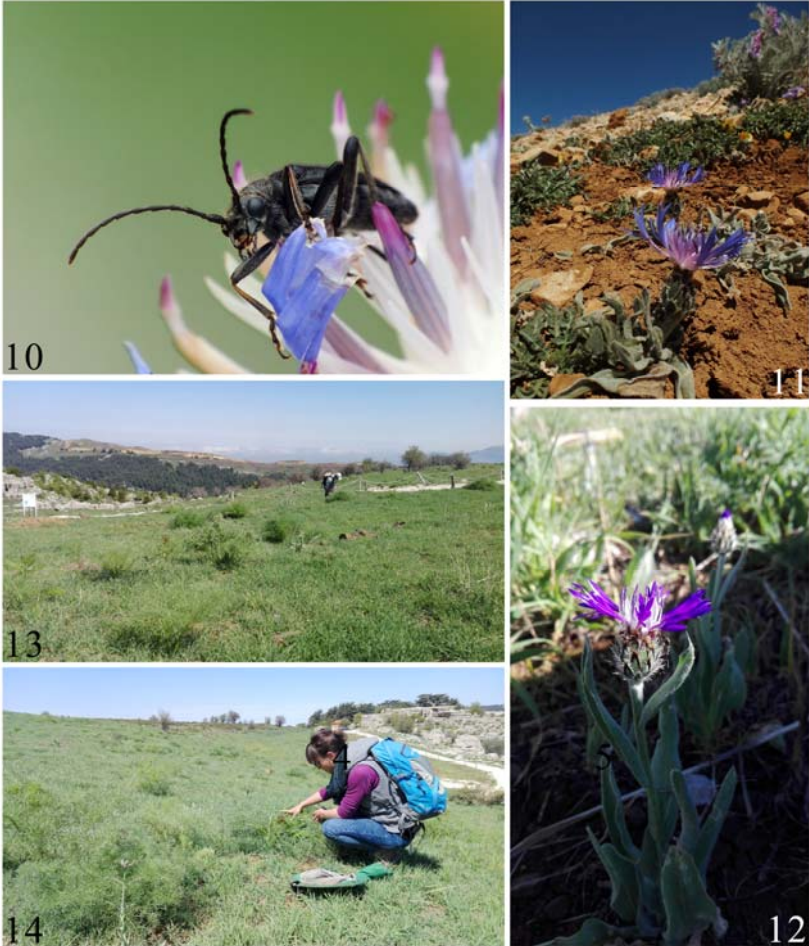
- Cocquempot Ch., Nemer N., Brustel H., Tanios Ch. 2016. Nouvelles données et nouveau catalogue des Coléoptères Cerambycidae du Liban (Coleoptera, Cerambycoidea). - Bulletin de la Société entomologique de France. 121(1): 91-104.
- Danilevsky M.L. 2014. Longicorn beetles (Coleoptera, Cerambycoidea) of Russia and adjacent countries. Part 1. Moscow: HSC: 1-522. [in Russian]
- Danilevsky M.L. 2015. New and poorly known taxa of the genus *Cortodera* Mulsant, 1863 (Coleoptera, Cerambycidae) from South Europe and Near East. - Humanity Space. International Almanac. 4(5): 1034-1084.
- Danilevsky 2017. Catalogue of Palaearctic Cerambycoidea. Version May, 2017. - URL: www.cerambycidae.net, www.zin.ru/Animalia/Coleoptera/rus/danilevs.htm
- Márkus A., Németh T. 2016. A new species of *Alosterna* Mulsant, 1863 from Lebanon, and notes on other species (Coleoptera: Cerambycidae). - Folia Entomologica Hungarica. 77: 23-32.
- Özdikmen H., Özbek H. 2012. A new species of *Cortodera* Mulsant, 1863 from Turkey (Coleoptera: Cerambycidae). - Munis Entomology & Zoology. 7(2): 931-934.
- Reitter E. 1890. Uebersicht der mir bekannten *Cortodera*-Arten aus Europa und den angrenzenden Ländern. - Wiener Entomologische Zeitung. 9: 243-246.



Figs 1-6. *Cortodera colchica libanensis* ssp. nov.:

1 - holotype, male; 2-4 - paratypes, males; 5-6 - paratypes, females.

Figs 7-9. Genitals of *Cortodera colchica libanensis* ssp. nov., holotype
7 - parameres, dorsal view; 8 - aedeagus, dorsal view; 9 - aedeagus, dorsolateral view.



Figs 10-14. *Cortodera colchica libanensis* ssp. nov.:

10 - living specimen; 11 - habitat at Bcharre, 4 km E Ariz, 2830 m, in June of 2016; 12 - *Centaurea triumfettii*, at Tannourine Nature Reserve, 1802 m, in May of 2017; 13-14: collecting site at Tannourine Nature Reserve, 1802 m, in May of 2017.

Received: 10.09.2017

Accepted: 08.10.2017