

**CATALOGUE OF CERAMBYCIDAE, MEGALOPODIDAE AND
CHRYSOMELIDAE (COLEOPTERA: CHRYSOMELOIDEA)
RECENTLY ENTERED IN THE PATRIMONY OF
“GRIGORE ANTIPA” NATIONAL MUSEUM OF
NATURAL HISTORY (BUCHAREST).
“IGOR CEIANU” COLLECTION.**

To Dr. Eng. Igor Ceianu's memory

RODICA SERAFIM, SANDA MAICAN

Abstract. The paper presents data on 268 species belonging to the Cerambycidae, Megalopodidae and Chrysomelidae families, preserved in the “Igor Ceianu” Collection, recently entered in the patrimony of “Grigore Antipa” National Museum of Natural History (Bucharest). Some Carpathians endemic species are highlighted: *Pseudogaurotina excellens* Brancsik, 1874, *Cryptocephalus carpathicus* Weise, 1875, *Sclerophaedon carpathicus* Weise, 1875, *Neocrepidodera transsilvanica* Fuss, 1864 and *Chrysolina weisei* Frivaldszky, 1883. Among the rare species preserved in the “Igor Ceianu” collection, we mention: *Nivellia sanguinosa* Gyllenhal, 1827, *Semanotus ruscicus ruscicus* Fabricius, 1776, *Pronocera angusta* Kriechbaum, 1844, *Callimoxys gracilis* Brullé, 1832, *Callimus angulatus angulatus* Schrank, 1789, *Cornumutilla lineata* Letzer, 1844, *Pedostrangalia revestita* Linnaeus, 1767, *Pedostrangalia verticalis* Germar, 1822, *Etorofus pubescens* Fabricius, 1787, *Cryptocephalus bohemi* Drapiez, 1819 and *Cheilotoma musciformis* Goeze, 1777. In terms of conservation, the following species of community interest are noted: *Rosalia alpina* Linnaeus, 1758, *Morimus asper funereus* Mulsant, 1863 and *Pseudogaurotina excellens* Brancsik, 1874.

Résumé. Le travail présente des données sur 268 espèces appartenant aux familles des Cerambycidae, Megalopodidae et Chrysomelidae, préservés dans la collection “Igor Ceianu”, récemment entrée dans le patrimoine de Muséum National d'Histoire Naturelle “Grigore Antipa” (Bucarest). Certaines espèces endémiques des Carpates sont mises en évidence: *Pseudogaurotina excellens* Brancsik, 1874, *Cryptocephalus carpathicus* Weise, 1875, *Sclerophaedon carpathicus* Weise, 1875, *Neocrepidodera transsilvanica* Fuss, 1864 and *Chrysolina weisei* Frivaldszky, 1883. Parmi les espèces rares de la collection “Igor Ceianu”, on mentionne: *Nivellia sanguinosa* Gyllenhal, 1827, *Semanotus ruscicus ruscicus* Fabricius, 1776, *Pronocera angusta* Kriechbaum, 1844, *Callimoxys gracilis* Brullé, 1832, *Callimus angulatus angulatus* Schrank, 1789, *Cornumutilla lineata* Letzer, 1844, *Pedostrangalia revestita* Linnaeus, 1767, *Pedostrangalia verticalis* Germar, 1822, *Etorofus pubescens* Fabricius, 1787, *Cryptocephalus bohemi* Drapiez, 1819 et *Cheilotoma musciformis* Goeze, 1777. En termes de conservation, les suivantes espèces d'intérêt communautaire sont notées: *Rosalia alpina* Linnaeus, 1758, *Morimus asper funereus* Mulsant, 1863 et *Pseudogaurotina excellens* Brancsik, 1874.

Key words: Coleoptera, Chrysomeloidea, Cerambycidae, Megalopodidae, Chrysomelidae, “Igor Ceianu” collection, “Grigore Antipa” National Museum of Natural History, București (Bucharest).

INTRODUCTION

The entomological collections of natural science museums and academic institutions make valuable contributions to biological science in many areas, such as taxonomy, systematics, biogeography, monitoring of environmental change, biological invasions, plant protection and human health.



In 2010 the heritage of “Grigore Antipa” National Museum of Natural History was enriched with “Igor Ceianu” insects collection, donated by his daughter, Cornelia Ceianu PhD, from “Cantacuzino” National Institute for Research and Development in Microbiology and Immunology (Bucharest).

Dr. Eng. Igor Ceianu (1925 - 2000) was one of the greatest Romanian specialists in the field of plant protection. As Olenici noted (2000): “*He was one of the stars of our forestry, a star that we hope that even the younger generations will see him in the true light*”.

MATERIAL AND METHOD

The material comprises about 18,000 coleopteran specimens, of which about 960 are cerambycids and 2,300 chrysomelids, most of them being collected by Igor Ceianu. Some of the specimens presented in the catalogue belonged to the “Friedrich Deubel” collection.

Friedrich Deubel (1845-1933), an amateur entomologist from Braşov, worked with Ludwig Ganglbauer (1856-1912), director of the Museum of Natural History in Vienna, and Karl Holdhaus (1883-1975), curator of the same museum. The results of this collaboration were published in 1910 in the book *Research on Carpathians Zoogeography (Untersuchungen über die Zoogeographie der Karpathen)*, here being listed the beetles species from Ciucaş, Postăvaru, Bucegi, Piatra Craiului, Făgăraş (Bâlea Lake, Negoiu Mt.), Parâng, Retezat and Rodna Mountains (Holdhaus & Deubel, 1910). Deubel (1925) has collaborated with the naturalist Dr. Karl Petri (1852-1932) from Sighişoara, the author of a synthesis of beetle fauna from Transylvania (Petri, 1912) which he filled in later.

Nomenclature and systematical order from Cerambycidae family are in accordance with those used by Sama (2005) in *Fauna Europaea*, Hoskovec & Rejzek (2009) in *Longhorn beetles (Cerambycidae) of the West Palaearctic region* and Danilevsky & Smetana (2010) in *Catalogue of Palaearctic Coleoptera* edited by Löbl & Smetana (2010).

The arrangement of the taxa within the Megalopodidae and Chrysomelidae families and the nomenclature follows the *Catalogue of Palaearctic Coleoptera*, namely: Silfverberg (2010), for subfamily Zeugophorinae; Schmitt (2010) - subfamily Criocerinae; Borowiec & Sekerka (2010) - subfamily Cassidinae; Kippenberg (2010)

- subfamily Chrysomelinae; Beenen (2010) - subfamily Galerucinae; Döberl (2010) - subfamily Alticinae; Regalin & Medvedev (2010) - tribe Clytrini; Lopatin, Smetana, Schöller & Löbl (2010) – tribe Cryptocephalini (including genus *Cryptocephalus* and remaining Cryptocephalini); Moseyko & Sprecher-Uebersax (2010) - subfamily Eumolpinae.

The information on the general distribution are given from Warchałowski (2003) and Löbl & Smetana (op. cit.).

Abbreviations:

f.h. - Forest house; Mt./Mts - Mountain/s; spec. (s) - specimen/s; coll. - collection; GANMNH - "Grigore Antipa" National Museum of Natural History.

Collectors' name:

Fr.D. - Fridrich Deubel; E.R. - Edmund Reitter.

Abbreviations of the county names:

AB - Alba; AR - Arad; BR - Brăila; BH - Bihor; BT - Botoșani; BV - Brașov; BZ - Buzău; CS - Caraș Severin; CL - Călărași; CJ - Cluj; CT - Constanța; CV - Covasna; DJ - Dolj; GL - Galați; HD - Hunedoara; HR - Harghita; IF - Ilfov; IL - Ialomița; IS - Iași; MM - Maramureș; MS - Mureș; NT - Neamț; PH - Prahova; SB - Sibiu; SM - Satu Mare; SV - Suceava; TL - Tulcea; TM - Timiș; TR - Teleorman; VS - Vaslui.

RESULTS

Based on the material examined until now, the "Igor Ceianu" collection includes 268 species, belonging to 131 genera and 14 subfamilies. Most of the material originates in Romania. Also, in the collection there is material from France, Spain, Italy, Austria, Germany, Hungary, Poland, Czech Republic, Republic of Moldova, Ukraine, Russia and Kazakhstan.

There are listed 268 species (174 Cerambycidae species, two Megalopodidae species and 92 Chrysomelidae species belonging to 131 genera of 14 subfamilies.

Superfamily Chrysomeloidea Latreille, 1802

Family Cerambycidae Latreille, 1802

Subfamily Prioninae Latreille, 1802

Tribe Aegosomatini J. Thomson, 1861

Genus *Aegosoma* Audinet-Serville, 1832

Aegosoma scabricorne (Scopoli, 1763)

1 spec., Vrancea Mts (Carpathians Curvature), 19.VI.1951.

Tribe Prionini Latreille, 1802

Genus *Prionus* Geoffroy, 1762

Prionus coriarius (Linnaeus, 1758)

2 specs, Câmpulung Moldovenesc (Eastern Carpathians) (SV), altitude: 700 m, 17.VII.1980, 8.VIII.1987.

Subfamily Lepturinae Latreille, 1802

Tribe Lepturini Latreille, 1802

Genus *Alosterna* Mulsant, 1863*Alosterna tabacicolor tabacicolor* (De Geer, 1775)(syn. *bicoloripes* Pic, 1914)

1 spec., Borsec (HR), altitude: 1000 m, VII.1910; 1 spec., Bicaz (NT), 1949; 2 specs, Broșteni (Eastern Carpathians), altitude: 800 m, 20.V.1949; 2 specs, Tarcău Mts (Eastern Carpathians) (NT), 16.VI.1949; 1 spec., Lacul Roșu, Ghilcoș (HR), 31.VII.1949; 4 specs, Câmpulung Moldovenesc (SV), 18.VI.1950, 30.V.1953, 14.VIII.1963, 30.V.1983; 1 spec., Hitiăș (TM), 5.V.1960; 2 specs, Huși, Voloșeni (VS), 16-17.V.1968; 1 spec., Anina Mts (CS), 5.VI.1968; 3 specs, Demăcușa (SV), 20.VII.1979, 15.VII.1983, 23.VI.1989; 1 spec., Dorna Căndrenilor (SV), 24.V.1982; 2 specs, Câmpulung Moldovenesc, Valea Caselor (SV), 6.VI.1984, 1.VI.1988.

Genus *Anastrangalia* Casey, 1924*Anastrangalia dubia dubia* (Scopoli, 1763)

1 spec., Hațeg (HD) without other data; 1 spec., Broșteni, Paltinu (SV), 3.VI.1958; 1 spec., Beliș, Ponor, 28.VII.1961; 1 spec., Rarău Mt., altitude: 1500 m, 23.VII.1967; 4 specs, Valea Putnei (Eastern Carpathians) (SV), altitude: 900 m, 14.VI.1972, 1.VIII.1980; 1 spec., Moldovița (SV), altitude: 800 m, 20.VII.1979.

Anastrangalia reyi (Heyden, 1889)

1 spec., Broșteni (Eastern Carpathians) (SV), altitude: 800 m, 24.VIII.1967; 3 specs, Valea Putnei (Eastern Carpathians) (SV), altitude: 900-1000 m, 23.VII.1965, 1.VIII.1980, 20.VI.1996.

Anastrangalia sanguinolenta (Linnaeus, 1760)

1 spec., Tarcău Mts, Fundul Aței (NT), 14.VI.1949; 1 spec., Ghilcoș (HR), 31.VII.1949; 1 spec., Drăgoiasa (SV), 26.VI.1958; 10 specs, Valea Putnei (Eastern Carpathians) (SV), 3.VIII.1970, 8.VI.1972, 22-23.VI.1972, 9.VII.1973, 1.VIII.1980, 12.VII.1981, 10.VIII.1982, 29.V.1986; 5 specs, Dornișoara (SV), 24.VII.1982.

Genus *Anoplodera* Mulsant, 1839*Anoplodera rufipes rufipes* (Schaller, 1783)

1 spec., without data.

Anoplodera sexguttata (Fabricius, 1775)

4 specs, Huși, Voloșeni (VS), 16-18.V.1968; 3 specs, without data.

Genus *Cornumutilla* Latzner, 1844*Cornumutilla lineata* (Gebler, 1830)

1 spec., Rarău Mt., altitude: 1500 m, 23.VII.1967; 2 specs, Valea Putnei (Eastern Carpathians) (SV), altitude: 1000 m, 15.VI.1970, 20.VII.1987.

Genus *Etorofus* Matsushita, 1933*Etorofus pubescens* (Fabricius, 1787)

1 spec., Austria, Vienna, without other data; 1 spec., Băile Herculane (CS), without other data.

Genus *Grammoptera* Audinet-Serville, 1835*Grammoptera ruficornis ruficornis* (Fabricius, 1781)(syn. *atra* Fabricius, 1775)

1 spec., Domogled Mt., Mehedinți Mts (CS), 10.VII.1978; 4 specs, Marginea (Voievodeasa, SV), 27.VI.1984.

Genus *Judolia* Mulsant, 1863*Judolia sexmaculata* (Linnaeus, 1758)

1 spec., Covasna (CV), without other data, Fr.D.; 1 spec., Cibin Mts (Cindrel Mts) (SB), without other data, Fr.D.; 1 spec., Borsec (HR), altitude: 1000 m, 18.VI.1960; 2 specs, Valea Putnei (Eastern Carpathians) (SV), altitude: 900-1000 m, 19.VI.1971, 2.VII.1983.

Genus *Leptura* Linnaeus, 1758*Leptura aethiops* Poda von Neuhaus, 1761

1 spec., Brașov (Southern Carpathians) (BV), 20.VII.1979.

Leptura annularis annularis Fabricius, 1801

1 spec., Câmpulung Moldovenesc (SV), 18.VII.1982.

Leptura aurulenta Fabricius, 1792

2 specs, Valea Putnei (Eastern Carpathians) (SV), altitude: 1000 m, 16.VI.1950, 5.VII.1955.

Leptura quadrifasciata quadrifasciata Linnaeus, 1758

1 spec., Republic of Moldova, Tighina, VI.1938; 1 spec., Râșnov (BV), VII.1939; 1 spec., Ghilcoș (HR), 31.VII.1949; 1 spec., Câmpulung Moldovenesc (SV), 15.VII.1982.

Genus *Lepturobosca* Reitter, 1913*Lepturobosca virens* (Linnaeus, 1758)

1 spec., Tarcău Mts, Fundul Aței (NT), 14.VI.1949; 1 spec., Broșteni (Eastern Carpathians), altitude: 800 m (SV), 26.VII.1963; 1 spec., Pojorâta (Fieru) (SV), 23.VII.1965.

Genus *Nivellia* Mulsant, 1863*Nivellia sanguinosa* (Gyllenhal, 1827)

1 spec., Rodna Mts (Rodnaer Gebirge) (MM), without other data, Fr.D.; 1 spec., Valea Putnei (Eastern Carpathians) (SV), altitude: 900 m, 23.V.1953 (Fig. 1 B).

Genus *Pachytodes* Pic, 1891*Pachytodes cerambyciformis* (Schrank, 1781)

1 spec., Cibin Mts (Cindrel Mts) (SB), VII.1910; 1 spec., Tarcău Mts (NT), 2.VIII.1949; 3 specs, Valea Putnei (Eastern Carpathians) (SV), altitude: 1000 m, 23.V.1965, 10.VIII.1982, 6.IX.1984.

Pachytodes erraticus erraticus (Dalman, 1817)

1 spec., Hungary, Pecs, without other data; 1 spec., București, 19.VI.1959, 1 spec., Oravița (CS), 28.VI.1962.

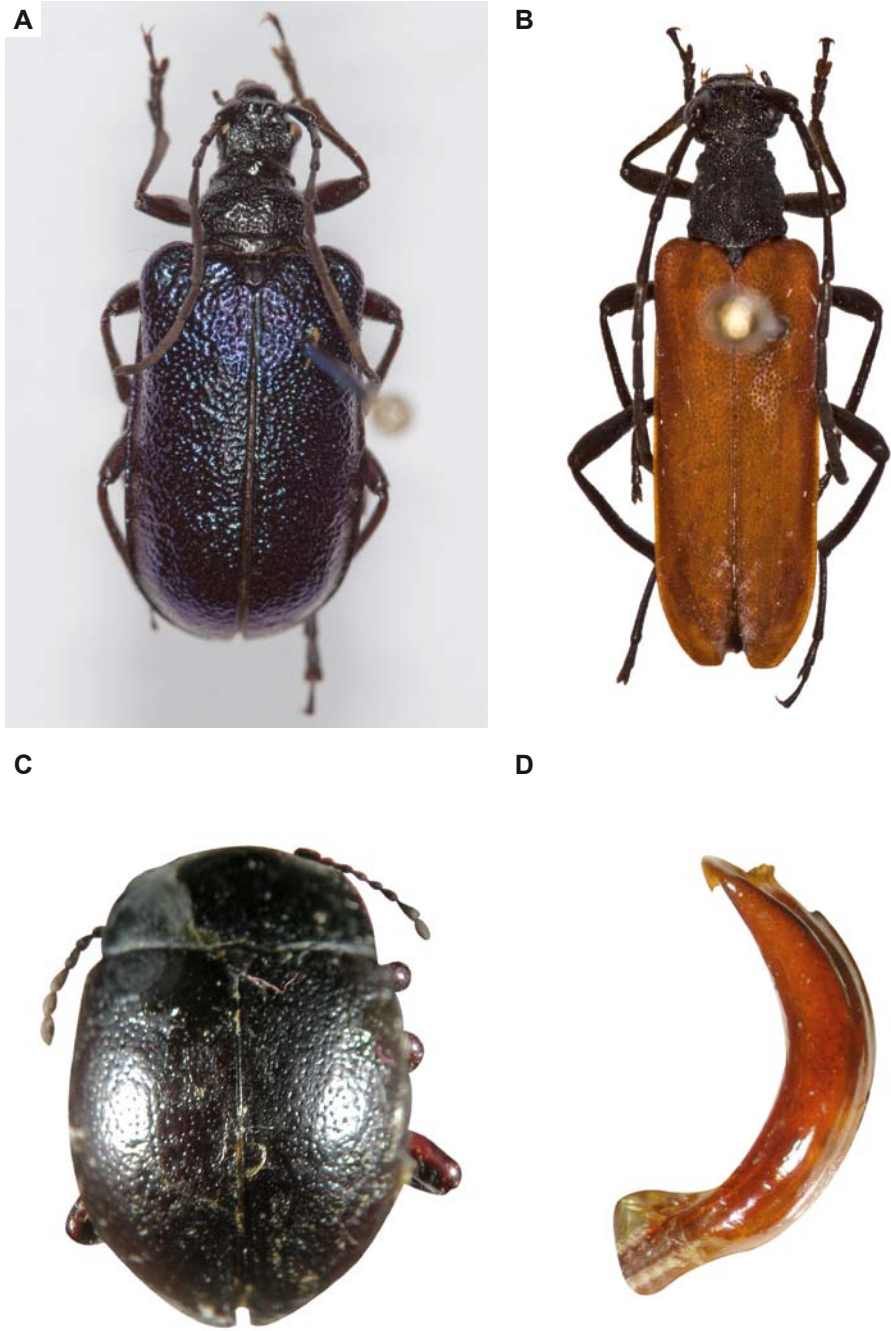


Fig. 1 - A, *Pseudogaurotina excellens*; B, *Nivellia sanguinosa*; C, *Chrysolina weisei*; D, *Chrysolina weisei*, penis lateral view.

Genus *Pedostrangalia* Sokolov, 1897

Subgenus *Pedostrangalia* Sokolov, 1897

Pedostrangalia (Pedostrangalia) revestita (Linnaeus, 1767)

1 spec., Codreni forest (VS), 19.V.1966.

Subgenus *Neosphenalia* Löbl, 2010

Pedostrangalia (Neosphenalia) verticalis (Germar, 1822)

1 spec., Babadag (TL), 10.VI.1962; 2 specs, Lunca (BT), 2.VI.1972; 1 spec., Domogled Mt., Mehedinți Mts (CS), 12.VIII.1978.

Genus *Pseudovadonia* Lobanov, Danilevsky & Murzin, 1981

Pseudovadonia livida livida (Fabricius, 1776)

1 spec., Retezat Mts (Western Carpathians) (HD), without other data; 1 spec., Brașov, Tâmpa Mt., without other data; 1 spec., Eastern Carpathians (SV), 25.VII.1949; 1 spec., Borsec (HR), altitude: 1000 m, 18.VI.1960; 2 specs, Jegălia (CL), 5.VI.1963, 3.VI.1992; 1 spec., Broșteni (Eastern Carpathians) (SV), altitude: 800 m, 24.VII.1967; 3 specs, Valea Putnei (Eastern Carpathians) (SV), 17.VI.1972, 7.VII.1973; 2 specs, Domogled Mt., Mehedinți Mts (CS), 7.VIII.1976; 1 spec., Gura Gârлуței (BR), VI.1994.

Genus *Rutpela* Nakane & K. Ohbayashi, 1957

Rutpela maculata maculata (Poda von Neuhaus, 1761)

1 spec., Buhalnița (NT), 25.VII.1949; 1 spec., Postăvarul Mts (Southern Carpathians) (BV), 7.VII.1955; 1 spec., Brașov (Southern Carpathians) (BV), altitude: 700 m, 15.VII.1956; 1 spec., Anina Mts (Southern Carpathians) (CS), 5.VI.1968.

Genus *Stenurella* Villiers, 1974

Stenurella bifasciata bifasciata (O. F. Müller, 1776)

1 spec., Bucu (IL), 22.VII.1957; 1 spec., Gyarmat Forest (SM), 1 spec., Mangalia (CT), 23.VI.1972; 6 specs, Jegălia (CL), 23.VI.1976, 30.VII.1992; 4 specs, Bărağan experimental forest resort, Jegălia (CL), 25.VI.1976; 3 specs, Cornetu (IF), 14.VII.1988.

Stenurella melanura (Linnaeus, 1758)

1 spec., Bucegi Mts, without other data; 1 spec., Secu (NT), 25.VII.1979; 3 specs, Ghilcoș (HR), 31.VII.1949; 3 specs, Miciurin Forest, Voluntari (IF), 23.VI.1959; 6 specs, Broșteni (Eastern Carpathians) (SV), altitude: 800 m, 26.VII.1958, 5.VIII.1959; 6 specs, Borsec (HR), altitude: 1000 m, 7-9.VIII.1959, 27.VII.1967; 2 specs, Beliș (CJ), 28.VII.1960; 1 spec., Babadag (TL), 12.VI.1962; 12 specs, Frasin (SV), altitude: 500 m, 23.VII.1962; 15 specs, Câmpulung Moldovenesc (SV), 17.VI.1962, 15-17.VII.1962, 6.VIII.1962, 14.VIII.1963, 19.VI.1965, 4.VIII.1973, 11.VIII.1974, 24.VIII.1976, 18.VII.1982, 19.VII.1983; 1 spec., Baci Forest (CJ), 7.VI.1965; 2 specs, Pojorăta (SV), altitude: 800 m, 23-24.VII.1965; 21 specs, Valea Putnei (Eastern Carpathians) (SV), altitude: 900 m, 8-23.VII.1965, 15.VII.1978, 1.VIII.1980, 2.VII.1981, 10.VIII.1982; 1 spec., Vatra Dornei (SV), 21.VII.1967; 2 specs, Coșna (Eastern Carpathians) (SV), altitude: 1000 m, 22.VII.1967; 9 specs, Domogled Mt., Mehedinți Mts (CS), 7.VIII.1976; 1 spec., Bicaz (NT), altitude: 600 m, 30.V.1979; 2 specs, Vama (Eastern Carpathians) (SV), altitude: 1100 m, 13-23.VIII.1979; 3 specs, Moldovița (SV), altitude: 800 m, 9.VIII.1982, 15.VII.1983; 3 specs, Cornetu (IF), 10.VI.1985, 14-18.VII.1988.

Stenurella nigra (Linnaeus, 1758)

1 spec., Măgura Codlei Mts (Zeidner Berg) (BV) VI., without other data; 1 spec., Bicaz (NT), altitude: 600 m, 10.VI.1949; 1 spec., Braşov (BV), altitude: 700 m, 26.V.1954; 3 specs, Huşi, Voloşeni (VS), 16-20.V.1968.

Stenurella septempunctata septempunctata (Fabricius, 1792)

1 spec., Târgu Mureş (MS), 7.VI.1965; 1 spec., Pustnicu Forest, Brăneşti (IF), 19.VI.1966; 1 spec., Huşi, Voloşeni (VS), 16.VI.1968; 4 specs, Domogled Mt., Băile Herculane (CS), altitude: 900 m, 31.VII.1949, 7.VIII.1976; 1 spec., Cornetu (IF), 10.VI.1985.

Genus *Stictoleptura* Casey, 1924Subgenus *Aredolpona* Nakane & K. Ohbayashi, 1957*Stictoleptura (Aredolpona) rubra rubra* (Linnaeus, 1758)

1 spec., Secu (NT), 25.VII.1979; 1 spec., Frasin (SV), altitude: 500 m, 27.VII.1962; 2 specs, Câmpulung Moldovenesc (SV), 3.IX.1974, 26.VIII.1976; 1 spec., Deia (SV), 4.VII.1989.

Subgenus *Stictoleptura* Casey, 1924*Stictoleptura (Stictoleptura) erythroptera* (Hagenbach, 1822)

1 spec., Râşnov (BV), 2.VIII.

Stictoleptura (Stictoleptura) maculicornis maculicornis (De Geer, 1775)

1 spec., Bicaz (NT), 1949; 1 spec., Tarcău Mts (Eastern Carpathians) (NT), 16.VI.1949; 4 specs, Câmpulung Moldovenesc (SV), 20.VI.1951, 19.VI.1965; 6 specs, Valea Putnei (Eastern Carpathians) (SV), altitude: 900-1000 m, 23.VII.1965, 13.VII.1970, 17.VI.1972, 9.VII.1973, 10.VIII.1982.

Stictoleptura (Stictoleptura) scutellata scutellata (Fabricius, 1781)

2 specs, Tarcău Mts (Eastern Carpathians) (NT), 14.VII.1949; 1 spec., Buhalniţa (NT), 25.VII.1949; 2 specs, Băile Herculane (CS), 1.VIII.-10.IX.1976.

Stictoleptura (Stictoleptura) tesserula (Charpentier, 1825)

3 specs, Băile Herculane (CS), 1.VIII.1976, 30.VII.1978; 3 specs, Domogled Mt., Mehedinţi Mts (CS), 2.VIII.1978.

Genus *Strangalia* Audinet-Serville, 1835

(syn. *Strangalina* Aurivillius 1912, *Typocerus* auct.)

Strangalia attenuata (Linnaeus, 1758)

1 spec., Bucureşti, 23.VI.1959.

Genus *Vadonia* Mulsant, 1863*Vadonia unipunctata unipunctata* (Fabricius, 1787)

1 spec., Hungary, without other data; 1 spec., Baci Forest, Târgu Mureş, 7.VI.1965.

Tribe Oxymirini Danilevsky, 1997

Genus *Oxymirus* Mulsant, 1862*Oxymirus cursor* (Linnaeus, 1758)

2 specs, Pojorâta (Eastern Carpathians) (SV), 20.V.1952; 1 spec., Veşău f.h., Putna (SV), 23.V.1965; 1 spec., Grinţieş (Eastern Carpathians) (NT), 20.V.1979.

Tribe Rhagiini Kirby, 1837

Genus *Acmaeops* Le Conte, 1850*Acmaeops pratensis* (Laicharting, 1784)

1 spec., without data.

Acmaeops septentrionis (C. G. Thomson, 1866)

1 spec., without data.

Genus *Anisorus* Mulsant, 1862*Anisorus quercus quercus* (Götz, 1783)

2 specs, București, 8.VI.1947; 1 spec., Babadag (TL), 12.IV.1961.

Genus *Cortodera* Mulsant, 1863*Cortodera femorata* (Fabricius, 1787)

2 specs, Broșteni (Eastern Carpathians), altitude: 800 m (SV), 26.V.1952; 1 spec., Câmpulung Moldovenesc (SV), altitude: 700 m, 25.VI.1967.

Cortodera humeralis humeralis (Schaller, 1783)

2 specs, Băneasa Forest, București, V.1947; 1 spec., Huși (VS), 14.V.1967.

Cortodera sp.

4 specs, Visterna (TL), 14.V.1963; 1 spec., Valea Putnei (Eastern Carpathians) (SV), 19.VI.1975.

Genus *Dinoptera* Mulsant, 1863*Dinoptera collaris* (Linnaeus, 1758)

2 specs, Valea Putnei (Eastern Carpathians) (SV), altitude: 1000 m, 23.VII.1965; 1 spec., Jegălia (CL), 3.VI.1992.

Genus *Evodinus* Le Conte, 1850*Evodinus clathratus* (Fabricius, 1792)

3 specs, Broșteni (Eastern Carpathians), altitude: 800 m (SV), 26.V.1959; 1 spec., Farcău, Socolău (MM), 28.V.1970; 18 specs, Valea Putnei (Eastern Carpathians) (SV), altitude: 900-1000 m, 18.V.1972, 4.VI.1973, 20.V.1978, 28.V.-2.VI.1980, 18.V.-10.VIII.1982, 16-19.V.1983; 1 spec., Rarău Mt., altitude: 1400 m, 20.VIII.1977; 2 specs, Vatra Dornei (SV), 18.V.1978; 4 specs, Călimani Mts (Eastern Carpathians), altitude: 1700 m, 16.VII.1979, 21.VII.1983; 1 spec., Săcele (BV), V.1989.

Genus *Gaurotes* Le Conte, 1850Subgenus *Carilia* Mulsant, 1863*Gaurotes (Carilia) virginea virginea* (Linnaeus, 1758)

1 spec., Austria, Koralpe, without other data, E.R.; 1 spec., Lacul Roșu, Ghilcoș (HR), 31.VII.1949; 1 spec., Valea Putnei (Eastern Carpathians) (SV), altitude: 1000 m, 23.VII.1965.

Genus *Pachyta* Dejean, 1821*Pachyta lamed lamed* (Linnaeus, 1758)

1 spec., Călimani Mts (Eastern Carpathians), altitude: 1500 m, 24.VIII.1978.

Pachyta quadrimaculata (Linnaeus, 1758)

1 spec., Broșteni (Eastern Carpathians) (SV), altitude: 800 m, 22.VII.1968; 1 spec., Valea Putnei (Eastern Carpathians) (SV), altitude: 1000 m, 14.VII.1981; 1 spec., Deia (SV), 4.VII.1989.

Genus *Pidonia* Mulsant, 1863*Pidonia lurida* (Fabricius, 1792)

1 spec., Tarcău Mts (Eastern Carpathians) (NT), 16.VI.1949; 1 spec., Bicaz (NT), 17.VI.1949; 1 spec., Timișu de Sus (Southern Carpathians) (BV), altitude: 1000 m, 21.VI.1957; 1 spec., Broșteni (Eastern Carpathians) (SV), altitude: 800 m, 18.VII.1958; 1 spec., Beliș (CJ), 28.VII.1960; 2 specs, Câmpulung Moldovenesc, Valea Caselor (SV), 1.VI.1988.

Genus *Pseudogaurotina* Plavilstshikov, 1958*Pseudogaurotina excellens* (Brancsik, 1874)

1 spec., Broșteni (Eastern Carpathians) (SV), altitude: 800 m, 10.VI.1958 (Fig. 1 A).

Genus *Rhagium* Fabricius, 1775Subgenus *Hagrium* Villiers, 1978*Rhagium (Hagrium) bifasciatum* Fabricius, 1775

1 spec., Câmpulung Moldovenesc (Eastern Carpathians) (SV), 18.VII.1953.

Subgenus *Megarhagium* Reitter, 1913*Rhagium (Megarhagium) mordax* (De Geer, 1775)

1 spec., Piatra Neamț (NT), 30.IV.1949.

Rhagium (Megarhagium) sycophanta (Schrank, 1781)

1 spec., Târgu Neamț (NT), 25.IV.1971.

Subgenus *Rhagium* Fabricius, 1775*Rhagium (Rhagium) inquisitor inquisitor* (Linnaeus, 1758)

1 spec., Piatra Neamț (NT), 10.V.1949; 1 spec., Broșteni (Eastern Carpathians) (SV), altitude: 800 m, 26.V.1958.

Genus *Stenocorus* Geoffroy, 1762*Stenocorus meridianus* (Linnaeus, 1758)

1 spec., Timișu de Sus (Southern Carpathians) (BV), altitude: 1000 m, 6.VI.1954; 2 specs, Valea Putnei (Eastern Carpathians) (SV), altitude: 900 m, 26.VI.1980, 23.V.1986; 1 spec., Cornetu (IF), 10.VI.1985.

Tribe Rhamnusiini Sama, 2009

Genus *Rhamnusium* Latreille, 1829*Rhamnusium bicolor bicolor* (Schrank, 1781)

1 spec., without data.

Tribe Xylosteini Reitter, 1913

Genus *Xylosteus* Frivaldszky von Frivald, 1837*Xylosteus spinolae* Frivaldszky von Frivald, 1837

1 spec., Retezat Mts, 6.VI.1962; 1 spec., Băile Herculane (CS), 20.VI.1976.

Subfamily Spondylidinae Audinet-Serville, 1832

Tribe Anisarthrini Mamaev & Danilevsky, 1973

Genus *Anisarthron* Dejean, 1835*Anisarthron barbipes* (Schrank, 1781)

1 spec., Braşov (BV), altitude: 700 m, 24.VI.1957.

Tribe Asemini J. Thomson, 1861

Genus *Arhopalus* Serville, 1834*Arhopalus rusticus* (Linnaeus, 1758)

2 specs, Buhalniţa (NT), VII.1949.

Genus *Asemum* Eschscholtz, 1830*Asemum striatum* (Linnaeus, 1758)

2 specs, Broşteni (Eastern Carpathians) (SV), altitude: 800 m, 22-26.V.1958.

Genus *Tetropium* Kirby, 1837*Tetropium castaneum* (Linnaeus, 1758)

1 spec., Broşteni (Eastern Carpathians) (SV), altitude: 800 m, 28.VII.1958; 1 spec., Russia, Siberia, VI.1981; 2 specs, Valea Putnei (Eastern Carpathians) (SV), altitude: 1000 m, 25-31.V.1983.

Tetropium fuscum (Fabricius, 1787)

1 spec., Taşca, (NT), V.1949; 1 spec., Câmpulung Moldovenesc (Eastern Carpathians) (SV), 25.III.1951.

Tribe Saphanini Gistel, 1848

Genus *Saphanus* Audinet-Serville, 1834*Saphanus piceus piceus* (Laicharting, 1784)

2 specs, Băile Herculane (CS), 10-12.VIII.1978; 1 spec., Săcele (BV), 6.VII.1988.

Tribe Spondylidini Audinet-Serville, 1832

Genus *Spondylis* Fabricius, 1775*Spondylis buprestoides* (Linnaeus, 1758)

1 spec., Tarcău Mts (Eastern Carpathians) (NT), 21.V.1949; 1 spec., Băile Herculane (CS), altitude: 900 m, 12.V.1977.

Subfamily Necydalinae Latreille, 1825

Tribe Necydalini Latreille, 1825

Genus *Necydalis* Linnaeus, 1758*Necydalis major major* Linnaeus, 1758

1 spec., without data.

Necydalis ulmi Chevrolat, 1838

1 spec., Germany, Steglitz, 25.V.

Subfamily Cerambycinae Latreille, 1802

Tribe Anaglyptini Lacordaire, 1868

Genus *Anaglyptus* Mulsant, 1839*Anaglyptus mysticus* (Linnaeus, 1758)

1 spec., Timișoara, Pădurea Verde (TM), 10.V.1960; 1 spec., Târgu Mureș, Pădurea Mare (MS), 14.V.1963; 1 spec., Huși, Voloșeni (VS), 14.V.1967.

Tribe Callichromatini Swainson & Shuckard, 1840

Genus *Aromia* Audinet-Serville, 1833*Aromia moschata moschata* (Linnaeus, 1758)

1 spec., Câmpulung Moldovenesc (SV), altitude: 600 m, 15.VIII.1974.

Tribe Callidiini Kirby, 1837

Genus *Callidium* Fabricius, 1775Subgenus *Callidium* Fabricius, 1775*Callidium (Callidium) violaceum* (Linnaeus, 1758)

1 spec., Broșteni (Eastern Carpathians) (SV), altitude: 800 m, 24.VI.1958; 2 specs, Valea Putnei (Eastern Carpathians) (SV), 6.VI.1979, 3.VI.1982.

Subgenus *Callidostola* Reitter, 1913*Callidium (Callidostola) aeneum aeneum* (De Geer, 1775)

2 specs, Valea Putnei (Eastern Carpathians) (SV), altitude: 1000 m, 7-10.VI.1982; 1 spec., Brașov, 7 Izvoare (Southern Carpathians) (BV), 18.VI.1987.

Genus *Leioderes* Redtenbacher, 1849*Leioderes kollari* Redtenbacher, 1849

2 specs, without other data.

Genus *Phymatodes* Mulsant, 1839Subgenus *Phymatodellus* Reitter, 1913*Phymatodes (Phymatodellus) rufipes rufipes* (Fabricius, 1776)

1 spec., without data.

Subgenus *Phymatodes* Mulsant, 1839*Phymatodes (Phymatodes) testaceus* (Linnaeus, 1758)

2 specs, Tâmpa (Kapellenberg), Brașov, without other data, Fr.D.; 2 specs, Brașov Mts (Kronstädter Gebirge) (BV), without other data, Fr.D; 2 specs, Pojorâta (SV), 15.VI.1950; 2 specs, Jegălia (CL), 3.IV.1957, 20.IV.1960; 1 spec., Cerhat Forest (SM), 23.V.1962; 1 spec., Roșiori de Vede (TR), 6.V.1966; 1 spec., Câmpulung Moldovenesc (SV), 30.VI.1984.

Genus *Poecilium* Fairmaire, 1864*Poecilium alni alni* (Linnaeus, 1767)

2 specs, Huși, Voloșeni (VS), 10.V.1967.

Poecilium pusillus pusillus (Fabricius, 1787)

6 specs, Timișoara, Lighed Forest (TM), 29.IV.-5.V.1960; 1 spec., Hitiaș (TM), 6.V.1960; 2 specs, Cerhat Forest (SM), 22.V.1962.

Genus *Pronocera* Motschulsky, 1875

Pronocera angusta (Kriechbaum, 1844)

1 spec., Ciumârna, Vatra Moldoviței (SV), 24.VI.1980.

Genus *Pyrrhidium* Fairmaire, 1864

Pyrrhidium sanguineum (Linnaeus, 1758)

1 spec., Republic of Moldova, Tighina (Bender), II.1937; 1 spec., Buzău (BZ), 16.IV.1947; 7 specs, Jegălia (CL), 20-21.IV.1960.

Genus *Ropalopus* Mulsant, 1839

Ropalopus clavipes (Fabricius, 1775)

1 spec., Pojorâta (SV), altitude: 800 m, 7.VII.1952.

Ropalopus femoratus (Linnaeus, 1758)

1 spec., Brașov (BV), altitude: 700 m, Fr.D.; 1 spec., Târgu Mureș, Pădurea Mare (MS), 22.V.1964.

Ropalopus macropus (Germar, 1824)

1 spec., Ardeluța (NT), 24.V.1949; 1 spec., Brașov (BV), altitude: 700 m, 28.IV.1957.

Genus *Semanotus* Mulsant, 1839

Semanotus ruscicus ruscicus (Fabricius, 1776)

1 spec., Câmpulung Moldovenesc (SV), altitude: 800 m, 25.IV.1951; 5 specs, Simeria (HD), 10-11.III.1959.

Tribe Cerambycini Latreille, 1802

Genus *Cerambyx* Linnaeus, 1758

Cerambyx scopolii Fuessly, 1775

1 spec., București, Băneasa Forest, 8.V.1947.

Tribe Clytini Mulsant, 1839

Genus *Chlorophorus* Chevrolat, 1863

Chlorophorus figuratus (Scopoli, 1763)

1 spec., Deva (HD), 2.VI.; 2 specs, Huși, Voloșeni (VS), 16-20.V.1968.

Chlorophorus herbstii (Brahm, 1790)

2 specs, Câmpulung Moldovenesc (SV), 21.VII.1962, 2.VIII.1966; 1 spec., Suceava, Adâncata, 2.VII.1953.

Chlorophorus sartor (O. F. Müller, 1766)

1 spec., Bucu (IL), 22.VII.1957; 17 specs, Jegălia (CL), 30.VII.1992.

Chlorophorus varius varius (O. F. Müller, 1766)

1 spec., Republic of Moldova, Tighina, VII.1936; 2 specs, Jegălia (CL), 16-23.VII.1955.

Genus *Clytus* Laicharting, 1784*Clytus arietis arietis* (Linnaeus, 1758)

1 spec., Braşov (BV), altitude: 700 m, without other data, Fr.D.; 1 spec., Hărman (Honigberg) (BV), 15.V.1906; 1 spec., Republic of Moldova, Ştefan Vodă district, Ermoclia, VII.1938; 1 spec., Câmpulung Moldovenesc (SV), VII.1950.

Clytus lama Mulsant, 1847

2 specs, Câmpulung Moldovenesc (SV), VII.1950, 1.VII.1951.

Clytus rhamni Germar, 1817

2 specs, Jegălia (CL), 20.VI.1955, 3.VI.1992; 1 spec., Huşi (SV), 20.V.1968.

Clytus tropicus (Panzer, 1795)

1 spec., Germany, Freistaat Thüringen, without other data; 1 spec., Timişoara, Hitiaş (TM), 13.V.1960.

Genus *Cyrtoclytus* Ganglbauer, 1882*Cyrtoclytus capra* (Germar, 1824)

1 spec., Transylvanian Mts = Southern Carpathians (Transsylvania Alpen), without other data; 1 spec., Valea Putnei (Eastern Carpathians) (SV), altitude: 1000 m, 3.VII.1979.

Genus *Isotomus* Mulsant, 1862*Isotomus speciosus* (D. H. Schneider, 1787)

1 spec., Suceava (Burdujeni) (SV), 4.VII.1953.

Genus *Plagionotus* Mulsant, 1842*Plagionotus arcuatus* (Linnaeus, 1758)

1 spec., Czech Republic, Moravia, without other data; 1 spec., Hărman (Honigberg) (BV), 4.VI.1902; 1 spec., Visterna, Babadag (TL), 14.V.1938; 1 spec., Poeni (IS), 17.IV.1953; 13 specs, Cerhat Forest (SM), 23-27.V.1962; 1 spec., Baci Forest (CJ), 7.VI.1963; 14 specs, Huşi, Voloşeni (VS), 15.V.1967.

Plagionotus detritus (Linnaeus, 1758)

3 specs, Buriaşu Forest, Periş (IF), 26.VI.1964.

Plagionotus floralis (Pallas, 1773)

2 specs, Jegălia (CL), 28.VI.1955.

Genus *Rusticoclytus* Vives, 1977*Rusticoclytus rusticus* (Linnaeus, 1758)

1 spec., Braşov (BV), altitude: 700 m, without other data, Fr.D.; 1 spec., Câmpulung Moldovenesc, (SV), altitude: 600 m, 4.VI. 1953; 1 spec., Buzău (BZ), 24.VI.1963; 1 spec., Văratec (NT), 11.VI.1970.

Genus *Xylotrechus* Chevrolat, 1860*Xylotrechus antilope antilope* (Schönherr, 1817)

1 spec., Cerhat Forest (SM), 23.V.1962; 2 specs, Baci Forest (CJ), 7.VI.1963.

Xylotrechus arvicola (Olivier, 1795)

2 specs, without data.

Tribe Deilini Fairmaire, 1864

Genus *Deilus* Audinet-Serville, 1834

Deilus fugax (Olivier, 1790)

1 spec., without data.

Tribe Graciliini Mulsant, 1839

Genus *Gracilia* Audinet-Serville, 1834

Gracilia minuta (Fabricius, 1781)

1 spec., Czech Republic, Boemia, without other data.

Tribe Hesperophanini Mulsant, 1839

Subtribe Hesperophanina Mulsant, 1839

Genus *Trichoferus* Wollaston, 1854

Trichoferus pallidus (Olivier, 1790)

2 specs, Galați (Barboși) (GL), 4.VIII.1960; 1 spec., Retezat Mts, Râul Mare, X.1964.

Tribe Hylotruperini Zagajkevitch, 1991

Genus *Hylotrupes* Audinet-Serville, 1834

Hylotrupes bajulus (Linnaeus, 1758)

3 specs, Domogled Mt., Mehedinți Mts (CS), 18.VII.1978.

Tribe Molorchini Gistel, 1848

Genus *Glaphyra* Newman, 1840

Glaphyra umbellatarum (Schreber, 1759)

1 spec., without other data; 1 spec., Cerhat Forest (SM), 25.V.1962.

Genus *Molorchus* Fabricius, 1792

Molorchus minor minor (Linnaeus, 1767)

1 spec., Brașov, 7 Izvoare (Southern Carpathians) (BV), 25.VI.1987; 2 specs, Broșteni (Eastern Carpathians) (SV), altitude: 800 m, 7.VI.1958, 25.V.1959; 1 spec., Câmpulung Moldovenesc (SV), 18.VI.1960.

Tribe Oabriini Mulsant, 1839

Genus *Obrium* Dejean, 1821

Obrium brunneum (Fabricius, 1792)

8 specs, Valea Putnei (Eastern Carpathians) (SV), 4.VII.1970, 2.VII.1976, 10.VI.1978, 31.V.-5.VI.1979, 1.VIII.1980, 10.06.1982, 23.07.1984; 1 spec., Bodea, Rarău Giumalău Mts, 5.VII.1976; 2 specs, Deia (SV), 26.V.1984, 11.VI.1987; 1 spec., Borsec (HR), 17.VI.1986; 1 spec., Brașov, 7 Izvoare (Southern Carpathians) (BV), 16.VI.1987; 4 specs, Săcele (BV), 7-16.VI.1990.

Obrium cantharinum cantharinum (Linnaeus, 1767)

1 spec., Republic of Moldova, without other data; 1 spec., Cotu Ciorii (BZ), 24.V.1963.

Tribe Purpuricerini J. Thomson, 1861

Genus *Purpuricenus* Dejean, 1821

Purpuricenus budensis (Götz, 1783)

3 specs, Brănești, Pasărea Forest (IF), 15.VI.1994.

Purpuricenus kaehleri kaehleri (Linnaeus, 1758)

1 spec., Brănești, Pasărea Forest (IF), 15.VI.1994.

Tribe Rosaliini Fairmaire, 1864

Genus *Rosalia* Audinet-Serville, 1834

Rosalia alpina alpina (Linnaeus, 1758)

2 specs, Domogled Mt., Mehedinți Mts (CS), 24.VIII.-8.X.1978; 1 spec., Sinaia (PH), 12.VII.1994.

Tribe Stenopterini Gistel, 1848

Genus *Callimoxys* Kraatz, 1863

Callimoxys gracilis (Brullé, 1832)

1 spec., Timișoara, Pădurea Verde (TM), 30.IV.1960.

Genus *Callimus* Mulsant, 1846

Callimus angulatus angulatus (Schrank, 1789)

1 spec., Băile Herculane (Herkulesbad) (CS), without other data, Fr.D.; 1 spec., Cerhat Forest (SM), 17.V.1962.

Subfamily Lamiinae Latreille, 1825

Tribe Acanthocinini Blanchard, 1845

Genus *Acanthocinus* Dejean, 1821

Acanthocinus aedilis (Linnaeus, 1758)

4 specs, Galu (NT), 3.V.1949.

Acanthocinus griseus (Fabricius, 1792)

2 specs, Fundata (BV), 14.VII.1949; 2 specs, Pojorâta (SV), 10.VI.1965.

Acanthocinus reticulatus (Razoumowsky, 1789)

1 spec., Republic of Moldova, without other data.

Genus *Leiopus* Audinet-Serville, 1835

Leiopus nebulosus nebulosus (Linnaeus, 1758)

1 spec., Republic of Moldova, Tighina, without other data; 1 spec., Hitiaș (TM), 10.VI.1960; 2 specs, Târgu Mureș, Pădurea Mare (MS), 11.VI.1963.

Tribe Acanthoderini J. Thomson, 1860

Genus *Aegomorphus* Haldeman, 1847

Aegomorphus clavipes (Schrank, 1781)

5 specs, Fetești (IL), 9-22.II.1960 (adults were obtained by breeding in laboratory conditions).

Genus *Oplosia* Mulsant, 1862

Oplosia cinerea (Mulsant, 1839)

1 spec., Domogled Mt., Mehedinți Mts (CS), 24.VII.1978.

Tribe Agapanthiini Mulsant, 1839

Genus *Agapanthia* Audinet-Serville, 1835

Subgenus *Agapanthia* Audinet-Serville, 1835

Agapanthia (Agapanthia) cardui (Linnaeus, 1767)

2 specs, Gyarmat Forest (SM), 27.VI.1960; 12 specs, Cerhat Forest (SM), 18-27.V.1962; 1 spec., Târgu Mureș (MS), Pădurea Mare (MS), 11.VI.1963.

Agapanthia (Agapanthia) violacea (Fabricius, 1775)

1 spec., Republic of Moldova, Tighina, V.1939; 8 specs, Jegălia (CL), 25.V.-21.VI.1955, 5.VI.1960; 1 spec., Huși, Voloșeni (VS), 12.V.1967; 1 spec., Cornetu (IF), 23.V.1984.

Subgenus *Epoptes* Gistel, 1857

Agapanthia (Epoptes) asphodeli (Latreille, 1804)

1 spec., Spain, Madrid, without other data.

Agapanthia (Epoptes) dahli (C. F. W. Richter, 1820)

1 spec., Republic of Moldova, Hârbovăț monastery, VI.1938; 1 spec., C. A. Rosetti (TL), VI.1948; 1 spec., Jegălia (CL), 21.VI.1955; 1 spec., Bazargic, 25.VI.1956.

Agapanthia (Epoptes) villosoviridescens (De Geer, 1775)

1 spec., Southern Carpathians (Transsylvanische Alpen), Piatra Mare Mts (Hohenstein), without other data, Fr.D.; 1 spec., Prejmer (BV), 23.V.1956; 8 specs, Timișu de Sus (BV), 21.VI.1957; 2 specs, Barnar (SV), 1.VIII.1958; 1 spec., Broșteni (Eastern Carpathians) (SV), 5.VIII.1959; 2 specs, Valea Putnei (Eastern Carpathians) (SV), 27.VI.1983; 1 spec., Câmpulung Moldovenesc, Valea Caselor (SV), 1.VI.1988.

Genus *Agapanthiola* Ganglbauer, 1900

Agapanthiola leucaspis (Steven, 1817)

5 specs, Vurpăr (Burgberg) (SB), 28.V.; 5 specs, Agigea (CT), 19-23.VI.1964.

Genus *Calamobius* Guérin-Ménéville, 1847

Calamobius filum (Rossi, 1790)

1 spec., Austria, Wien, in the surroundings, without other data; 2 specs, Agigea (CT), 23.VI.1964.

Tribe Apodasyini Lacordaire, 1872

Genus *Anaesthetis* Dejean, 1835

Anaesthetis testacea testacea (Fabricius, 1781)

1 spec., Republic of Moldova, Tighina, 13.VI.1940; 1 spec., Cerhat Forest (SM), 17.V.1962; 1 spec., Voloșeni (VS), 20.V.1968.

Tribe Dorcadionini Swainson & Shuckard, 1840

Genus *Dorcadion* Dalman, 1817Subgenus *Carinatodorcadion* Breuning, 1943*Dorcadion (Carinatodorcadion) aethiops* (Scopoli, 1763)

3 specs, Sabed (MS), 31.III.1951; 2 specs, Cerhat Forest (SM), 18.V.-23.V.1962.

Dorcadion (Carinatodorcadion) fulvum erythropterum (Fischer von Waldheim, 1823)

1 spec., Republic of Moldova, Ștefan Vodă district, Ermoclia, V.1938; 3 specs, Sabed (MS), 31.III.1951.

Subgenus *Cribridorcadion* Pic, 1910*Dorcadion (Cribridorcadion) arenarium arenarium* (Scopoli, 1763)

1 spec., Italy, without other data.

Dorcadion (Cribridorcadion) equestre transsilvanicum Ganglbauer, 1884

1 spec., Republic of Moldova, Ștefan Vodă district, Ermoclia, V.1938; 2 specs, Cucuieți, Scioaștea (TR), 6.V.1966.

Dorcadion (Cribridorcadion) pedestre pedestre (Poda, 1761)

2 specs, Sabed (MS), 31.III.1951; 4 specs, Cerhat Forest (SM), 24.IV.-13.V.1962; 1 spec., Visterna (TL), 14.V.1963.

Dorcadion (Cribridorcadion) murrayi (Küster, 1847)

1 spec., Cernica Forest (IF), V.1945; 1 spec., București, 4.IV.1946; 1 spec., Bufta (IF), 20.V.1947; 2 specs, Cucuieți, Scioaștea (TR), 6.V.1966.

Dorcadion (Cribridorcadion) scopolii (Herbst, 1784)

2 specs, Bacova (TM), 8.V.1960; 3 specs, Cerhat Forest (SM), 23.IV.-22.V.1962.

Genus *Neodorcadion* Ganglbauer, 1884*Neodorcadion bilineatum* (Germar, 1824)

1 spec., Republic of Moldova, V.1939; 2 specs, Poeni (IS), 17.IV.1953; 1 spec., Cotu Ciorii (BZ), 24.V.1963.

Tribe Lamiini Latreille, 1825

Genus *Lamia* Fabricius, 1775*Lamia textor* (Linnaeus, 1758)

1 spec., Adâncata (SV), 3.VII.1953.

Genus *Morimus* Brullé, 1832*Morimus asper asper* (Sulzer, 1776)

1 spec., Alba Iulia (Karlsburg) (AB), without other data, Fr.D.

Morimus asper funereus (Mulsant, 1863)

1 spec., Bârnova (IS), VIII.1949; 1 spec., București, IV.1950; 1 spec., Babadag (TL), V.1953.

Tribe Mesosini Mulsant, 1839

Genus *Mesosa* Latreille, 1829

Subgenus *Aplocnemia* Stephens, 1831

= *Aphelocnemia* Stephens, 1831 [emendation, not in usage]

Mesosa (Aplocnemia) nebulosa nebulosa (Fabricius, 1781)

2 specs, Lighed Forest (TM), 5.V.1960; 4 specs, Hitiaș (TM), 9-13.V.1960; 2 specs, Cerhat Forest (SM), 22.V.1962.

Subgenus *Mesosa* Latreille, 1829

Mesosa (Mesosa) curculionoides (Linnaeus, 1760)

1 spec., Republic of Moldova, Ștefan Vodă district, Ermoclia, VII.1938; 1 spec., Gurghiu (MS), 14.VII.1952; 1 spec., Gyarmat Forest (SM), 25.VII.1960; 1 spec., Baci Forest (CJ), 7.VI.1962; 3 specs, Piscu, Tunari Forest (DJ), 11.IX.1965; 1 spec., Huși, Voloșeni (VS), 13.V.1967.

Tribe Monochamini Gistel, 1848

Genus *Monochamus* Dejean, 1821

Subgenus *Monochamus* Dejean, 1821

Monochamus (Monochamus) galloprovincialis (Olivier, 1795)

1 spec., Beliș (CJ), 28.VII.1960; 1 spec., Câmpulung Moldovenesc (SV), 18.VII.1982

Monochamus (Monochamus) saltuarius (Gebler, 1830)

1 spec., Greifenstein, without other data.

Monochamus (Monochamus) sartor (Fabricius, 1787)

2 specs, Tarcău Mts, Fundul Aței (NT), 14.VII.1949; 1 spec., Tașca (NT), 29.VII.1949; 3 specs, Pojorâta (SV), 19.IX.1949, 10.VI.1965; 1 spec., Timișu de Sus (BV), 21.VI.1957.

Monochamus (Monochamus) sutor sutor (Linnaeus, 1758)

7 specs, without data; 1 spec., Borsec (HR), 1.V.1958; 6 specs, ex U.R.S.S., without mentioning the collection place, 28.VI.1982 (adults were obtained by breeding in laboratory conditions).

Monochamus (Monochamus) urussovii (Fischer von Waldheim, 1805)

2 specs, ex U.R.S.S., without mentioning the collection place, 24.VI.1982 (adults were obtained by breeding in laboratory conditions).

Tribe Phytoeciini Mulsant, 1839

Genus *Oberea* Dejean, 1835

Subgenus *Amaurostoma* J. Müller, 1906

Oberea (Amaurostoma) erythrocephala erythrocephala (Schrank, 1776)

2 specs, Jegălia (CL), 21.VI.1955; 1 spec., Prejmer (BV), 12.VI.1956.

Oberea (Amaurostoma) euphorbiae (Germar, 1813)

1 spec., C. A. Rosetti, the Danube Delta (TL), VII.1950; 1 spec., Hanu Conachi (GL), VII.1950.

Subgenus *Oberea* Dejean, 1835*Oberea (Oberea) linearis* (Linnaeus, 1761)

1 spec., C. A. Rosetti, the Danube Delta (TL), VII.1950.

Oberea (Oberea) oculata (Linnaeus, 1758)

1 spec., Timiș, 6.VII.1954; 3 specs, Târnăveni (MS), 1.IV.1967.

Oberea (Oberea) pupillata (Gyllenhal, 1817)

2 specs, Câmpulung Moldovenesc (SV), 17.VI.1971.

Genus *Opsilia* Mulsant, 1862*Opsilia coeruleascens* (Scopoli, 1763)

3 specs, Bicaz (NT), 2.VI.1949; 1 spec., București, Ștefănești Forest, 5.VI.1959.

Genus *Phytoecia* Dejean, 1835Subgenus *Musaria* J. Thomson, 1864*Phytoecia (Musaria) affinis affinis* (Harrer, 1784)(= *Phytoecia nigripes* Voet, 1778)

1 spec., without data.

Phytoecia (Musaria) argus (Frölich, 1793)

1 spec., Oca Sibiului (Salzburg) (SB), without other data.

Subgenus *Phytoecia* Dejean, 1835*Phytoecia (Phytoecia) caerulea caerulea* (Scopoli, 1772)

10 specs, Jegălia (CL), 19-25.VI.1955; 1 spec., Visterna, Babadag (TL), 17.V.1963.

Phytoecia (Phytoecia) cylindrica (Linnaeus, 1758)

1 spec., București, Ștefănești Forest, 23.VI.1959; 3 specs, Timișoara, Pădurea Verde (TM), 5-8.VI.1959.

Phytoecia (Phytoecia) icterica (Schaller, 1783)

1 spec., Hungary (Hungarn), without other data.

Phytoecia (Phytoecia) nigricornis (Fabricius, 1781)

1 spec., Republic of Moldova, VI.1938.

Phytoecia (Phytoecia) pustulata pustulata (Schrank, 1776)

1 spec., Roznov (NT), 17.VI.1952; 1 spec., Huși, Voloșeni (VS), 16.V.1967.

Phytoecia (Phytoecia) virgula (Charpentier, 1825)

1 spec., Sighișoara (Schässburg) (MS), without other data; 1 spec., București, Ștefănești Forest, 10.VI.1959; 1 spec., Timișoara, Pădurea Verde (TM), 5.V.1960; 1 spec., Cerhat Forest (SM), 12.V.1962; 1 spec., Agigea (CT), 20.VI.1964.

Genus *Pilemia* Fairmaire, 1864*Pilemia hirsutula hirsutula* (Frölich, 1793)

1 spec., Hungary, Peczel, without other data; 3 specs, Huși, Voloșeni (VS), 17-20.V.1968.

Tribe Pogonocherini Mulsant, 1839

Genus *Exocentrus* Dejean, 1835

Exocentrus adspersus Mulsant, 1846

1 spec., Retezat Mts (Háztéger Gebirge) (Western Carpathians), without other data, Fr.D.

Exocentrus lusitanus (Linnaeus, 1767)

1 spec., Târgu Mureș, Pădurea Mare (MS), 11.VI.1963; 1 spec., Huși, Voloșeni (VS), 16.V.1968.

Exocentrus punctipennis Mulsant & Guillebeau, 1856

1 spec., Simeria (HD), 19.VI.1959; 31 specs, Bărağan experimental forest resort, Jegălia (CL), 26.V.1955, 7.VII.1956, 15-28.VI.1957, 4.VII.1966.

Genus *Pogonocherus* Dejean, 1821

Pogonocherus decoratus Fairmaire, 1855

1 spec., Marginea (Voivodeasa, SV), 27.VI.1984; 1 spec., Câmpulung Moldovenesc, Valea Caselor (SV), 10.V.1985.

Pogonocherus eugeniae eugeniae Ganglbauer, 1891

1 spec., Râșnov Mts (Rosenauer Gebirge) (BV), without other data, Fr.D.

Pogonocherus fasciculatus fasciculatus (De Geer, 1775)

1 spec., Neagra (AR), 19.V.1958; 1 spec., Borsec (HR), 6.VI.1958; 6 specs, Valea Putnei, (Eastern Carpathians) (SV), 20.IX.1969, 17.V.-26.VI.1972, 15.V.-5.VI.1979; 1 spec., Pojorâta (SV), 8.VIII.1979; 4 specs, Coșna (SV), 8.VII.1988.

Pogonocherus hispidulus (Piller & Mitterpacher, 1783)

1 spec., Ilișești (SV), 6.VI.1988; 1 spec., Cerhat Forest (SM), 14.V.1962; 1 spec., Întorsura Buzăului (CV), VI.1981.

Pogonocherus hispidus (Linnaeus, 1758)

1 spec., without data.

Pogonocherus ovatus (Goeze, 1777)

16 specs, Brețcu (CV), 18.V.1994

Tribe Saperdini Mulsant, 1839

Genus *Menesia* Mulsant, 1856

Menesia bipunctata (Zubkov, 1829)

1 spec., Austria, Umgebungen Graz, without other data.

Genus *Saperda* Fabricius, 1775

Saperda carcharias (Linnaeus, 1758)

1 spec., Pojorâta (SV), 25.VII.1965; 1 spec., Valea Putnei (Eastern Carpathians) (SV), 21.V.1981; 2 specs, without other data.

Saperda perforata (Pallas, 1773)

1 spec., Republic of Moldova, VI.1938; Câmpulung Moldovenesc (SV), 31.V.1953.

Saperda populnea (Linnaeus, 1758)

13 specs, Jegălia (CL), 22.V.-19.VI.1955, 12-14.V.1956, 3.IV.-7.V.1957, 21.I.1959.

Saperda punctata (Linnaeus, 1767)

2 specs, Republic of Moldova, 1937-1939; 1 spec., Broșteni (Eastern Carpathians) (SV), 26.V.1959.

Saperda scalaris scalaris (Linnaeus, 1758)

1 spec., Tarcău Mts (Eastern Carpathians) (NT), 16.VI.1949; 1 spec., Izvorul Alb, Câmpulung Moldovenesc (SV), 17.V.1951; 1 spec., Domogled Mt., Feregari Valley (CS), 28.V.1977; 1 spec., Valea Putnei (Eastern Carpathians) (SV), 2.VII.1981.

Saperda similis Laicharting, 1784

1 spec., Poland, Silesia (Schlesien), Weistritz, without other data.

Genus *Stenostola* Dejean, 1835*Stenostola ferrea ferrea* (Schrank, 1776)

1 spec., Valea Putnei (Eastern Carpathians) (SV), 11.VII.1984.

Tribe Tetropini Portevin, 1927

Genus *Tetrops* Stephens, 1829*Tetrops praeustus praeustus* (Linnaeus, 1758)

11 specs, Pietra Neamț (NT), 6.V.1949; 3 specs, Jegălia (CL), 25-27.V.1955, 23.VI.1956; 1 spec., Babadag (TL), 12.IV.1961; 3 specs, Cerhat Forest (SM), 14-25.V.1962; 4 specs, Câmpulung Moldovenesc, Valea Caselor (SV), 24.V.1978, 1.VI.1988, 10.VI.1984, 8.VI.1987.

Family Megalopodidae Latreille, 1802

Subfamily Zeugophorinae Böving & Craighead, 1931

Genus *Zeugophora* Kunze, 1818Subgenus *Zeugophora* Kunze, 1818*Zeugophora (Zeugophora) flavicollis* (Marsham, 1802)

3 specs, without data.

Zeugophora (Zeugophora) subspinosa (Fabricius, 1781)

1 spec., Brașov Mts (Kronstädter Gebirge) (BV), without other data, Fr.D.

Family Chrysomelidae Latreille, 1802

Subfamily Criocerinae Latreille, 1804

Genus *Criocerus* Geoffroy, 1762*Criocerus duodecimpunctata* (Linnaeus, 1758)

1 spec., Visterna, Babadag (TL), 17.VI.1963.

Criocerus quatuordecimpunctata (Scopoli, 1763)

1 spec., Hanu Conachi (GL), 17.VII.1950; 1 spec., without data.

Genus *Liliocerus* Reitter, 1913*Liliocerus lilii* (Scopoli, 1763)

1 spec., Austria, Umgebungen Graz, without other data.

Liliocerus merdigera (Linnaeus, 1758)

1 spec., Brașov Mts (Kronstädter Gebirge) (BV), without other data, Fr.D.; 1 spec., Pădurea Verde (TM), 1.V.1960.

Subfamily Cassidinae Gyllenhal, 1813

Tribe Cassidini Gyllenhal, 1813

Genus *Cassida* Linnaeus, 1758*Cassida canaliculata* Laicharting, 1781

1 spec., Zau de Câmpie (Mező Zah), Transylvania (Erdély), without other data.

Cassida murraea murraea Linnaeus, 1767

4 specs, Câmpulung Moldovenesc, Valea Caselor (SV), 1.06.1988.

Cassida rubiginosa rubiginosa O. F. Müller, 1776

1 spec., Jegălia (CL), 25.VI.1955.

Genus *Hypocassida* Weise, 1893*Hypocassida subferruginea* (Schrank, 1776)

1 spec., Tâmpa (Kapellenberg) (BV), without other data, Fr.D.

Genus *Pilemostoma* Desbrochers des Loges, 1891*Pilemostoma fastuosa* (Schaller, 1783)

1 spec., Valley of the Olt River (Alt, Fluss), without other data, Fr.D.

Subfamily Chrysomelinae Latreille, 1802

Tribe Chrysomelini Latreille, 1802

Subtribe Chrysomelina Latreille, 1802

Genus *Chrysomela* Linnaeus, 1758*Chrysomela vigintipunctata vigintipunctata* Scopoli, 1763

1 spec., Broșteni (Eastern Carpathians) (SV), 4.05.1958; 1 spec., Timișu de Sus (BV), 21.VI.1957.

Subtribe Prasocurina Reitter, 1913

Genus *Phaedon* Latreille, 1829Subgenus *Phaedon* Latreille, 1829*Phaedon (Phaedon) cochleariae cochleariae* (Fabricius, 1792)

2 specs, Rodna Mts (Rodnaer Gebirge), without other data, Fr.D.

Genus *Prasocuris* Latreille, 1802Subgenus *Hydrothassa* C. G. Thomson, 1859*Prasocuris (Hydrothassa) glabra* (Herbst, 1783)

3 specs, Postăvaru Mts (Schuler Gebirge) (BV), without other data, Fr.D.

Prasocuris (Hydrothassa) marginella marginella (Linnaeus, 1758)

1 spec., Postăvaru Mts (Schuler Gebirge) (BV), without other data, Fr.D.

Subgenus *Prasocuris* Latreille, 1802*Prasocuris (Prasocuris) phellandrii* (Linnaeus, 1758)

1 spec., without data; 2 specs, Valley of the Olt River (Alt, Fluss), without other data, Fr.D.

Tribe Doryphorini Motschulsky, 1860
 Subtribe Chrysolinina S.-H. Chen, 1936
 Genus *Chrysolina* Motschulsky, 1860
 Subgenus *Chrysolina* Motschulsky, 1860

Chrysolina (Chrysolina) staphylaea staphylaea (Linnaeus, 1758)

1 spec., Braşov Mts (Kronstädter Gebirge) (BV), without other data, Fr.D.

Subgenus *Taeniosticha* Motschulsky, 1860

Chrysolina (Taeniosticha) fimbrialis hungarica (Fuss, 1861)

1 spec., Tâmpa (Kapellenberg) (BV), without other data, Fr.D.

Chrysolina (Taeniosticha) weisei (Frivaldszky, 1883)

1 spec. ♂, Retezat Mts (Hátzégger Gebirge), without other data, Fr.D (Fig. 1, C-habitus, D-aedeagus, lateral view).

Genus *Oreina* Chevrolat, 1836

Subgenus *Chrysochloa* Hope, 1840

Oreina (Chrysochloa) cacaliae senecionis (Schummel, 1844)

1 spec., Rodna Mts (Rodnaer Gebirge), without other data, Fr.D.; 1 spec., Postăvaru Mts (Schuler Gebirge) (BV), without other data, Fr.D.

Subgenus *Protorina* Weise, 1894

Oreina (Protorina) plagiata plagiata (Suffrian, 1861)

1 spec., Postăvaru Mts (Schuler Gebirge) (BV), without other data, Fr.D.

Tribe Entomoscelini Reitter, 1913

Genus *Sclerophaedon* Weise, 1882

Subgenus *Sclerophaedon* Weise, 1882

Sclerophaedon (Sclerophaedon) carpathicus (Weise, 1875)

4 specs, Postăvaru Mts (Schuler Gebirge) (BV), without other data, Fr.D (Fig. 2 A).

Genus *Gonioctena* Chevrolat, 1836

Subgenus *Gonioctena* Chevrolat, 1836

Gonioctena (Gonioctena) linnaeana ab. *decastigma* (Duftschmid, 1825)

1 spec., Braşov Mts (Kronstädter Gebirge) (BV), without other data, Fr.D.

Gonioctena (Gonioctena) linnaeana ab. *kraatzi* (Westhoff, 1881)

1 spec., Germany, Thuringia, Hildburghausen, without other data.

Gonioctena (Gonioctena) linnaeana ab. *nigricollis* (Westhoff, 1882)

1 spec., Râşnov Mts (Rosenauer Gebirge) (BV), without other data, Fr.D.

Gonioctena (Gonioctena) viminalis viminalis (Linnaeus, 1758)

1 spec., Câmpulung Moldovenesc, Valea Caselor (SV), 1.VI.1988.

Subgenus *Goniomena* Motschulsky, 1860

Gonioctena (Goniomena) quinquepunctata quinquepunctata (Fabricius, 1787)

3 specs, Tâmpa (Kapellenberg) (BV), without other data, Fr.D.

A



B



C



D



Fig. 2 - A, *Sclerophaedon carpathicus*; B, *Neocrepidodera transsilvanica*; C, *Cheilotoma musciformis*; D, *Cryptocephalus bohemi*.

Subfamily Galerucinae Latreille, 1802

Tribe Galerucini Latreille, 1802

Genus *Galeruca* Geoffroy, 1762Subgenus *Galeruca* Geoffroy, 1762*Galeruca (Galeruca) pomonae pomonae* (Scopoli, 1763)

1 spec., Tâmpa (Kapellenberg) (BV), without other data, Fr.D.; 1 spec., Bicz (NT), VI.1949; 1 spec., Câmpulung Moldovenesc (SV), 22.VII.1952; 2 specs, Băile Herculane (CS), altitude: 900 m, 30.VII.1976, 9.VIII.1978; 1 spec., Domogled Mt., Mehedinți Mts (CS), 12.VIII.1978.

Galeruca (Galeruca) tanaceti tanaceti (Linnaeus, 1758)

1 spec., Cotu Ciorii (BZ), 10.XI.1963; 1 spec., Piscu, Tunari Forest (DJ), 11.IX.1965; 1 spec., Câmpulung Moldovenesc, Deia (SV), 1.IX.1974; 3 specs, Băile Herculane (CS), altitude: 900 m, 11-12.IX.1976, 2.VII.1978; 2 specs, Domogled Mt., Mehedinți Mts (CS), 30.IX.1978, 2.X.1978.

Genus *Galerucella* Crotch, 1873Subgenus *Neogalerucella* Chûjô, 1962*Galerucella (Neogalerucella) lineola lineola* (Fabricius, 1781)

1 spec., Jegălia (CL), 17.VII.1955 (on *Populus*).

Genus *Lochmaea* Weise, 1883*Lochmaea caprea* (Linnaeus, 1758)

1 spec., Cerhat forest (SM), 21-24.IX.1962.

Genus *Xanthogaleruca* Laboissière, 1934*Xanthogaleruca luteola* (O. F. Müller, 1766)

1 spec., Mărculești Forest (IL), 1.VIII.1955; 5 specs, Jegălia (CL), 25.-28.V.1955, 30-31.VII.1955; 1 spec., Sabed (MS), 31.III.1959; 1 spec., Bărağan experimental forest resort, Jegălia (CL), 10.IX.1991.

Tribe Luperini Gistel, 1848

Subtribe Luperina Gistel, 1848

Genus *Calomicrus* Dillwyn, 1829*Calomicrus circumfusus* (Marshall, 1802)

3 specs, Braşov Mts (Kronstädter Gebirge) (BV), without other data, Fr.D.

Genus *Phyllobrotica* Chevrolat, 1836*Phyllobrotica adusta adusta* (Creutzer, 1799)

1 spec., without data; 1 spec., Miciurin Forest, Voluntari (IF), 23.VI.1959.

Subfamily Alticinae Newman, 1835

Genus *Argopus* Fischer von Waldheim, 1824*Argopus ahrensii* (Germar, 1817)

1 spec., Vurpăr (Burgberg) (SB), 23.VII.

- Genus *Chaetocnema* Stephens, 1831
 Subgenus *Chaetocnema* Stephens, 1831
Chaetocnema (Chaetocnema) obesa (Boieldieu, 1859)
 4 specs, Valley of the Olt River (Alt, Fluss), without other data, Fr.D.
- Genus *Crepidodera* Chevrolat, 1836
Crepidodera aurata ab. *pulchella* (Stephens, 1835)
 1 spec., Braşov Mts (Kronstädter Gebirge) (BV), without other data, Fr.D.
- Crepidodera aurata* ab. *subunicolor* (Pic, 1918)
 6 specs, Tâmpa (Kapellenberg) (BV), without other data, Fr.D.
- Genus *Hippuriphila* Foudras, 1861
Hippuriphila modeeri (Linnaeus, 1760)
 5 specs, Dealul Şprengi (Gespreng), Braşov (BV), without other data.
- Genus *Mniophila* Stephens, 1831
Mniophila muscorum muscorum (Koch, 1803)
 5 specs, Tâmpa (Kapellenberg) (BV), without other data, Fr.D.
- Genus *Neocrepidodera* Heikertinger, 1911
Neocrepidodera corpulenta (Kutschera, 1860)
 1 spec., Postăvaru Mts (Schuler Gebirge) (BV), without other data, Fr.D.
- Neocrepidodera ferruginea* (Scopoli, 1763)
 3 specs, Braşov Mts (Kronstädter Gebirge) (BV), without other data, Fr.D.
- Neocrepidodera transsilvanica* (Fuss, 1864)
 2 specs, Rodna Mts (Rodnaer Gebirge), without other data, Fr.D (Fig. 2 B).
- Neocrepidodera transversa* (Marsham, 1802)
 2 specs, Vurpăr (Burgberg) (SB), 28.07.
- Genus *Phyllotreta* Chevrolat, 1836
Phyllotreta armoraciae (Koch, 1803)
 1 spec., Czech Republic, Moravia, Beskydy Mountains (Besciden), without other data, E.R.
- Phyllotreta atra* (Fabricius, 1775)
 1 spec., Turnu Roşu (Rotenturm), Cindrel Mts (Cibin Mts) (SB), without other data, Fr.D.
- Phyllotreta diademata* Foudras, 1860
 2 specs, Rodna Mts (Rodnaer Gebirge), without other data, Fr.D.
- Phyllotreta flexuosa* (Illiger, 1794)
 1 spec., Braşov Mts (Kronstädter Gebirge) (BV), without other data, Fr.D.
- Phyllotreta nigripes nigripes* (Fabricius, 1775)
 1 spec., Tâmpa (Kapellenberg) (BV), without other data, Fr.D.
- Phyllotreta ochripes* (Curtis, 1837)
 1 spec., Valley of the Olt River (Alt, Fluss), without other data, Fr.D.
- Phyllotreta tetrastigma* (Comolli, 1837)
 1 spec., Braşov Mts (Kronstädter Gebirge) (BV), without other data, Fr.D.

Genus *Sphaeroderma* Stephens, 1831

Sphaeroderma testaceum (Fabricius, 1775)

2 specs, Tâmpa (Kapellenberg) (BV), without other data, Fr.D.

Subfamily Cryptocephalinae Gyllenhal, 1813

Tribe Clytrini Kirby, 1837

Subtribe Clytrina Kirby, 1837

Genus *Cheilotoma* Chevrolat, 1836

Cheilotoma musciformis musciformis (Goeze, 1777)

2 specs (1 ♀, 1 ♂), Tâmpa (Kapellenberg) (BV), without other data, Fr.D (Fig. 2 C).

Genus *Clytra* Laicharting, 1781

Subgenus *Clytra* Laicharting, 1781

Clytra (Clytra) laeviuscula Ratzeburg, 1837

1 spec., without data.

Clytra (Clytra) quadripunctata quadripunctata (Linnaeus, 1758)

1 spec., Braşov Mts (Kronstädter Gebirge) (BV), without other data, Fr.D.

Genus *Coptocephala* Chevrolat, 1836

Coptocephala chalybaea chalybaea (Germar, 1824)

3 specs (2 ♂♂, 1 ♀), without data.

Coptocephala scopolina scopolina (Linnaeus, 1767)

2 specs, Tâmpa (Kapellenberg) (BV), without other data, Fr.D.

Coptocephala unifasciata unifasciata (Scopoli, 1763)

1 spec., Tâmpa (Kapellenberg) (BV), without other data, Fr.D.; 1 spec., Gherla (Szamosújvár) (CJ), 20.VII.1948.

Genus *Labidostomis* Chevrolat, 1836

Subgenus *Labidostomis* Chevrolat, 1836

Labidostomis (Labidostomis) cyanicornis (Germar, 1822)

2 specs, Orşova, Danube Gorges (Cazanele Dunării) (CS), without other data.

Labidostomis (Labidostomis) pallidipennis (Gebler, 1830)

1 spec., without data.

Genus *Lachnaia* Chevrolat, 1836

Subgenus *Lachnaia* Chevrolat, 1836

Lachnaia (Lachnaia) sexpunctata (Scopoli, 1763)

1 spec., Măgura Codlei Mts (Zeidner Berg) (BV), without other data, Fr.D.

Genus *Tituboea* Lacordaire, 1848

Tituboea macropus (Illiger, 1800)

2 specs (1 ♂, 1 ♀), Guşteriţa (Hemmersdorf) (SB), without other data.

Tribe Cryptocephalini Gyllenhal, 1813

Subtribe Cryptocephalina Gyllenhal, 1813

Genus *Cryptocephalus* Geoffroy, 1762Subgenus *Asionus* Lopatin, 1988*Cryptocephalus (Asionus) apicalis* Gebler, 1830

1 spec., Băneasa forest, Bucharest, 8.V.1947; 2 specs, Visterna, Babadag (TL), 12.IV.1961; 1 spec., Agigea (CT), 20.VI.1964; 1 spec., Kazakhstan, Uralsk, without other data, E.R.

Cryptocephalus (Asionus) bohemiensis Drapiez, 1819

1 spec., Hanu Conachi (GL), 18.VII.1951 (Fig. 2 D).

Cryptocephalus (Asionus) gamma Herrich-Schäffer, 1835

1 spec., Lacul Sărat (BR), 21.VII.1950.

Cryptocephalus (Asionus) quatuordecimmaculatus D. H. Schneider, 1792

4 specs, Dealul Talinenberg, Hărman (BV), 13.V.

Subgenus *Burlinius* Lopatin, 1965*Cryptocephalus (Burlinius) carpathicus* Frivaldszky, 1883

1 spec., Postăvaru Mts (Schuler Gebirge) (BV), without other data, Fr.D.

Cryptocephalus (Burlinius) connexus Olivier, 1807

9 specs, Jegălia (CL), 31.VII.1952, 31.VII.1955, 17.VII.1957, 30.VII.1992 (on *Tamarix*).

Cryptocephalus (Burlinius) frontalis Marsham, 1802

1 spec., Cotu Ciorii (BZ), 23-26.V.1963.

Cryptocephalus (Burlinius) fulvus fulvus (Goeze, 1777)

3 specs, Braşov Mts (Kronstädter Gebirge) (BV), without other data, Fr.D.

Cryptocephalus (Burlinius) rufipes (Goeze, 1777)

1 spec., without data.

Subgenus *Cryptocephalus* Geoffroy, 1762*Cryptocephalus (Cryptocephalus) bicolor* Eschscholz, 1818

2 specs, without data; 1 spec., Cotu Ciorii (BZ), 26.05.1963.

Cryptocephalus (Cryptocephalus) biguttatus (Scopoli, 1763)

2 specs, Oraviţa, Ceresnaia (CS), 23.VI.1962; 1 spec., Câmpulung Moldovenesc (SV), 13.VI.1987.

Cryptocephalus (Cryptocephalus) bipunctatus (Linnaeus, 1758)

2 specs, Secu, Vânători (NT), 30.V.1949; 1 spec., Miciurin Forest, Voluntari (IF), VI.1959; 1 spec., Visterna, Babadag (TL), 12.IV.1961; 6 specs, Cerhat Forest (SM), 17-23.V.1962; 1 spec., Câmpulung Moldovenesc (SV), 15-17.VII.1962; 1 spec., Babadag (TL), 10.V.1962; 3 specs, Cotu Ciorii (BZ), 26.VI.1963; 1 spec., Jegălia (CL), 5.VI.1992.

Cryptocephalus (Cryptocephalus) bipunctatus ab. *sanguinolentus* Scopoli, 1763

4 specs, Câmpulung Moldovenesc (SV), 18.VI.1950, 15-17.VII.1962; Câmpulung Moldovenesc, Poiana Bota (SV), 17.VI.1966; 1 spec., Postăvaru Mts (Schuler Gebirge) (BV), without other data, Fr.D.

Cryptocephalus (Cryptocephalus) cordiger (Linnaeus, 1758)

1 spec., Vurpăr (Burgberg) (SB), without other data; 1 spec., Visterna, Babadag (TL), 14.V.1963; 1 spec., Huși, Voloșeni (VS), 14.V.1967.

Cryptocephalus (Cryptocephalus) flavipes Fabricius, 1781

2 specs, Brașov Mts (Kronstädter Gebirge) (BV), without other data, Fr.D.

Cryptocephalus (Cryptocephalus) frenatus Laicharting, 1781

1 spec., Câmpulung Moldovenesc (SV), 16.VI.1951, on *Salix*; 2 specs, Câmpulung Moldovenesc, Valea Caselor (SV), 14.VIII.1963; 1 spec., Retezat Mts (Hätzéger Gebirge), without other data, Fr.D.

Cryptocephalus (Cryptocephalus) janthinus Germar, 1824

2 specs, C. A. Rosetti, the Danube Delta (TL), VII.1950.

Cryptocephalus (Cryptocephalus) marginatus Fabricius, 1781

4 specs (3 ♀♀, 1 ♂), Cotu Ciorii (BZ), 23-26.VI.1963 (on *Tamarix*).

Cryptocephalus (Cryptocephalus) moraei (Linnaeus, 1758)

2 specs, Valea Putnei (Eastern Carpathians) (SV), 7.VI.1950; 2 specs, Visterna, Babadag (TL), 12.IV.1961; 3 specs, Postăvaru Mts (Schuler Gebirge) (BV), without other data, Fr.D.; 1 spec., Gura Gârлуței (BR), without other data.

Cryptocephalus (Cryptocephalus) nitidulus Fabricius, 1787

2 specs, Vurpăr (Burgberg) (SB), without other data.

Cryptocephalus (Cryptocephalus) octacosmus Bedel, 1891

1 spec., without data; 1 spec., C. A. Rosetti, the Danube Delta (TL), VII.1950; 1 spec., C. Borcea, Buta, 27.VI.1956.

Cryptocephalus (Cryptocephalus) octopunctatus octopunctatus (Scopoli, 1763)

1 spec., Ardeluța, Tarcău Mts (Eastern Carpathians) (NT), 24.V.1949; 2 specs, Câmpulung Moldovenesc (SV), 7.V.1952, 30.V.1953; 1 spec., Câmpulung Moldovenesc, Valea Caselor (SV), 14.VIII.1963, 1 spec., Visterna, Babadag (TL), 14.V.1963; 1 spec., Pojorăta (SV), 27.V.1965; 1 spec., Huși, Voloșeni (VS), 13.V.1967; 1 spec., Brașov Mts (Kronstädter Gebirge) (BV), without other data, Fr.D.; 2 specs, Valea Putnei (Eastern Carpathians) (SV), 11.VI.1981, 2.VII.1981.

Cryptocephalus (Cryptocephalus) parvulus O. F. Müller, 1776

1 spec., France, Biarritz, without other data.

Cryptocephalus (Cryptocephalus) quadriguttatus C. F. W. Richter, 1820

1 spec., Brașov Mts (Kronstädter Gebirge) (BV), without other data, Fr.D.

Cryptocephalus (Cryptocephalus) quadripustulatus Gyllenhal, 1813

2 specs, Postăvaru Mts (Schuler Gebirge) (BV), without other data, Fr.D.

Cryptocephalus (Cryptocephalus) quinquepunctatus (Scopoli, 1763)

2 specs, Secu, Vânători (NT), 30.V.1949.

Cryptocephalus (Cryptocephalus) sexpunctatus sexpunctatus (Linnaeus, 1758)

1 spec., Brașov Mts (Kronstädter Gebirge) (BV), without other data, Fr.D.

Cryptocephalus (Cryptocephalus) violaceus violaceus Laicharting, 1781

1 spec., Republic of Moldova, VI.1939.

Cryptocephalus (Cryptocephalus) vittatus Fabricius, 1775

2 specs, Broșteni, Drăgăioasa (SV), 26.VII.1958; 1 spec., Pojorâta (SV), 13.VII.1965.

Subgenus *Heterichnus* Warchałowski, 1991

Cryptocephalus (Heterichnus) coryli (Linnaeus, 1758)

1 spec. ♀, Dealul Melcilor (Schneckenberg), Brașov (BV), without other data, Fr.D., 28.V.; 1 spec., without data; Pojorâta (SV), 23.VII.1965.

Subgenus *Protophysus* Chevrolat, 1836

Cryptocephalus (Protophysus) schaefferi schaefferi Schrank, 1789

1 spec. ♀, Tâmpa (Kapellenberg) (BV), without other data, Fr.D.

Subtribe Pachybrachina Chapuis, 1874

Genus *Pachybrachis* Chevrolat, 1836

Subgenus *Pachybrachis* Chevrolat, 1836

Pachybrachis (Pachybrachis) fimbriolatus Suffrian, 1848

3 specs, Vurpăr (Burgberg) (SB), without other data.

Pachybrachis (Pachybrachis) tessellatus tessellatus (Olivier, 1791)

2 specs, Vurpăr (Burgberg) (SB), without other data.

Subfamily Eumolpinae Hope, 1840

Tribe Bromiini Chapuis, 1874

Genus *Bromius* Chevrolat, 1836

Bromius obscurus (Linnaeus, 1758)

1 spec., Pojorâta (SV), 16.VI.1965; 1 spec., Falcău-Sadău (SV), 9.VI.1970; 1 spec., without data; 1 spec., Moldavița, Demăcușa (SV), 29.VI.1977.

Bromius obscurus ab. *villosulus* (Schrank, 1781)

2 specs, without data; 1 spec., Borsec (HR), 9.VIII.1966.

Tribe Eumolpini Hope, 1840

Genus *Chrysochus* Chevrolat, 1836

Chrysochus asclepiadeus asclepiadeus (Pallas, 1773)

1 spec., Ukraine, Răstoace, Cernăuți, 13.VII.1949.

Tribe Nodinini S.H.-Chen, 1940

Genus *Eupales* Lefèvre, 1885

Eupales ulema (Germar, 1813)

2 specs, Băile Herculane (Herkulesbad) (CS), Fr.D.; 2 specs, Valea Cernei; 1 spec., Lighed Forest (TM), 29.IV.1960; 7 specs, Timișoara, Pădurea Verde (TM), 1-8.V.1960.

DISCUSSIONS

For many species new data on the distribution in Romanian fauna are given.

Among the valuable species preserved in the “Igor Ceianu” collection, we mention: *Pseudogaurotina excellens*, *Cryptocephalus carpathicus*, *Asiorestia transsilvanica*, *Chrysolina weisei*, *Nivellia sanguinosa*, *Semanotus ruscicus ruscicus*, *Pronocera angusta*, *Callimoxys gracilis*, *Callimus angulatus angulatus*, *Cornumutilla lineata*, *Pedostrangalia revestita*, *Pedostrangalia verticalis*, *Etorofus pubescens*, *Cryptocephalus bohemiensis* and *Cheilotoma muscifformis*.

Pseudogaurotina excellens is a Carpathians endemic species, being distributed in Slovakia, Poland, Hungary, Romania and Ukraine (Pawłowski, 2009; Danilevsky & Smetana, 2010). In Romania it was recorded from Transylvania, without other mentions (Petri, 1912); Retezat Mts and Cindrel Mts (Gura Râului, the Valley of Cibin River) (Petri, 1925 - 1926); Gura Apei (the Valley of Râul Mare River, Retezat Mts) (Panin & Săvulescu, 1961); Săpânța (Maramureș) (Serafim, 1997); Rodna Mts (Maramureș) (Nitzu et al., 2008); Parâng Mts (Tatole et al., 2009). The specimens from Gura Apei (June 15, 1956) and Săpânța (July 5, 1996) belong to the collections of the “Grigore Antipa” Museum (Serafim, 2005). In the “Igor Ceianu” collection there is a specimen collected at Broșteni (Eastern Carpathians, June 10, 1958). *Pseudogaurotina excellens* is strictly protected at European level.

The collection includes some chrysomelid species endemic to the Carpathians, such as: *Neocrepidodera transsilvanica* (a mesoalpine species, endemic in the Eastern Carpathians), *Sclerophaedon carpathicus* (a montane species, endemic in the Eastern Carpathians), *Cryptocephalus carpathicus* (distributed in Carpathians: Hungary, Romania, Polonia, Slovakia, Serbia and Montenegro) (Warchałowski, 2003; Pawłowski, 2009; Löbl & Smetana, 2010).

Also, *Chrysolina weisei* is a rare alpine species, probably endemic to the Romanian Carpathians (Warchałowski, 2003; Löbl & Smetana, op.cit.). It was mentioned only in some areas of Romania: Bălan (Petri Collection), Retezat (Deubel collection) (Petri, 1912); Retezat Mountains (Zănoaga Lake), Cibin Mountains, Făgăraș Mountains, Băile Herculane, Rodna Mountains, Brașov, Bălan, Hațeg (Panin, 1944, with older data).

Poecilium pusillum pusillum occurs in Europe. There are only a few mentions of its presence in Romania: Gușterița, Sibiu, Rupea (Petri, 1912). In Ceianu collection there is a single specimen, unfortunately without data.

Pronocera angusta is a very rare species in Central and South-East Europe. In Romania it was recorded from Băile Herculane, Baia-de-Criș, Borsec, Tușnad, Târgu Secuiesc, Câmpulung Moldovenesc (1 specimen GANMNH collections) (Panin & Săvulescu, 1961). The “Igor Ceianu” collection includes one specimen collected from Ciurmârna, Vatra Moldoviței.

Semanotus ruscicus ruscicus is a rare species in Romania. It has been reported by: Panin & Săvulescu (op. cit.) from Câmpulung Moldovenesc and

Lovrin (GANMNH collections); Kovacs et al. (1998-1999) from Băile Herculane, Domogled Mt.; Serafim (2009) from Vaidacuta (GANMNH collections). In the Ceianu collection there are preserved specimens from Câmpulung Moldovenesc and Simeria. The species occurs in South-East and Central Europe, Near East.

Trichoferus pallidus is distributed in Europe. In Romania, this species was reported from: Sibiu (Petri, 1925-1926); București, Tecuci, Drobeta-Turnu Severin (Săvulescu, 1972; Serafim, 2009); Cernișoara (Ruicănescu, 1997). In "Igor Ceianu" collection there are some specimens from Galați and Retezat Mts.

Callimoxys gracilis was mentioned until now only from Transylvania and Băile Herculane (Petri, 1912). The only specimen from GANMNH collections (Pădurea Verde) belongs to the "Igor Ceianu" collection.

Callimus angulatus angulatus is distributed in Europe, North Africa, Near East. In Romanian fauna it was reported from Sibiu, Dumbrava, Bălan, Cibin Mts, Măgura (Petri, 1912); Băile Herculane (Panin & Săvulescu, op.cit.); Drobeta-Turnu Severin, Breznița, Băile Herculane, Pasărea Forest, Brănești (Serafim, 2009). In Ceianu collection there are two specimens collected from Băile Herculane and Cerhat Forest.

Nivellia sanguinosa is a rare Palaearctic, boreo-montaineous species. In the "Igor Ceianu" collection there are two specimens collected from Rodna Mts and Putna Valley.

Also, *Cornumutilla lineata* is a boreo-mountainous species, distributed in Central and Eastern Europe and Siberia. A few data have been published on this species: Făgăraș Mountains, Bârcaciu Chalet (Panin & Săvulescu, op. cit.); Făgăraș Mts, Negoiu Peak (GANMNH collections) (Serafim, 2006).

Pedostrangalia revestita occurs in Europe and Transcaucasia. In Romania, it was reported from Dumbrava, Hațeg, Baia Mare, Brașov, Băile Slănic, Cindrel Mountains (Panin & Săvulescu, op. cit.); Măzănești (Andriescu, 1972); Craiova (Serafim, 1985); Bodi Ferneziu (Serafim, 2006). In the collections of "Grigore Antipa" Museum there are three specimens collected from Craiova, Maramureș and Codreni Forest ("Igor Ceianu" collection).

The following chrysomelid species are mentioned as being rare in Romania: *Cryptocephalus bohemi* (recorded from Letea Forest and Periprava, Dobrogea region) (Roșca, 1973); *Cryptocephalus gamma* (cited from Turda, Sibiu (Petri, 1912, 1925-1926), Ocna Sibiului, Azuga (Roșca, 1973), Periteașca, Portița, Sf. Gheorghe (Dobrogea region) (Crișan, 1995); *Cheilotoma musciformis* (mentioned from Sighișoara, Deva, Zau de Câmpie and Brașov (Petri, 1912); in the GANMNH collections there is a female specimen of *C. musciformis*, collected by Dr. Nicolae Săvulescu, from Tecuci, 5.VI.1954 (Maican, 2006).

In terms of conservation, *Rosalia alpina*, *Morimus asper funereus* and *Pseudogaurotina excellens* are species of community interest, included in the annexes of the Habitats Directive 92/43/EEC.

ACKNOWLEDGEMENTS

Special thanks to Mrs. PhD Cornelia Ceianu for the collection donated to the “Grigore Antipa” Museum. We are grateful to Ph.D. Mikhail Leontievitch Danilevsky, A. N. Severtsov Institute of Ecology and Evolution, Russian Academy of Sciences, for their constructive comments and publishing advice. And also many thanks to our colleagues Mr. Ionuț Iorgu and Mr. George Năzăreanu for photographs. The study of Chrysomelidae family was funded by project no. RO1567-IBB03/2011 from the Institute of Biology Bucharest of Romanian Academy.

CATALOGUL CERAMBYCIDELOR, MEGALOPODIDELOR ȘI CRISOMELIDELOR
(COLEOPTERA: CHRYSOMELOIDEA) INTRATE RECENT ÎN PATRIMONIUL
MUZEULUI NAȚIONAL DE ISTORIE NATURALĂ
„GRIGORE ANTIPA” (BUCUREȘTI).
COLECȚIA „IGOR CEIANU”.

REZUMAT

Lucrarea prezintă date referitoare la materialul de coleoptere (Familiele Cerambycidae, Megalopodidae și Chrysomelidae) păstrat în Colecția „Igor Ceianu”, donată în 2010 Muzeului Național de Istorie Naturală „Grigore Antipa” din București. Sunt listate 268 specii (174 specii Cerambycidae, două specii Megalopodidae și 92 specii Chrysomelidae), încadrate în 131 genuri, din 14 subfamilii.

Dintre speciile rare, care conferă valoare patrimoniului științific al Muzeului „Grigore Antipa” menționăm: *Nivellia sanguinosa* Gyllenhal, 1827, *Semanotus ruscicus ruscicus* Fabricius, 1776, *Pronocera angusta* Kriechbaum, 1844, *Callimoxys gracilis* Brullé, 1832, *Callimus angulatus angulatus* Schrank, 1789, *Cornumutilla lineata* Letzer, 1844, *Pedostrangalia revestita* Linnaeus, 1767, *Pedostrangalia verticalis* Germar, 1822, *Etorofus pubescens* Fabricius, 1787, *Cryptocephalus bohemiensis* Drapiez, 1819 și *Cheilotoma musciformis* Goeze, 1777.

Pseudogaurotina excellens Brancsik, 1874, *Cryptocephalus carpathicus* Weise, 1875, *Sclerophaedon carpathicus* Weise, 1875 și *Neocrepidodera transsilvanica* Fuss, 1864 sunt specii endemice în Munții Carpați, iar *Chrysolina weisei* Frivaldszky, 1883 este endemică în România.

Rosalia alpina Linnaeus, 1758, *Morimus asper funereus* Mulsant, 1863 și *Pseudogaurotina excellens* Brancsik, 1874 sunt specii de interes comunitar, incluse în anexele Directivei 92/43/EEC referitoare la conservarea habitatelor naturale și a speciilor de faună și floră sălbatică.

LITERATURE CITED

- ANDRIESCU, I., 1972 - Contribuții asupra cunoașterii Cerambycidelor din nordul Moldovei. Muzeul de Științele Naturii Dorohoi. Studii și Comunicări: 191-196. (in Romanian)
- BEENEN, R., 2010 - Subfamily Galerucinae Latreille, 1802. Pp. 443-491. In: I. Löbl, A. Smetana (eds), Catalogue of Palaearctic Coleoptera, Vol. 6, Chrysomeloidea. Apollo Books, Stenstrup, 924 pp.
- BOROWIEC, L., L. SEKERKA, 2010 - Subfamily Cassidinae Gyllenhal, 1813. Pp. 368-390. In: I. Löbl, A. Smetana (eds), Catalogue of Palaearctic Coleoptera, Vol. 6, Chrysomeloidea. Apollo Books, Stenstrup, 924 pp.
- CRÎȘAN, AL., 1995 - Cercetări asupra familiei Chrysomelidae (Coleoptera) în zona Rezervației Biosferei “Delta Dunării”, cu referire specială la *Stylosomus tamaricis* H.-S. și *Cryptocephalus gamma* H.-S. Buletinul de Informare al Societății Lepidopterologice Române, 6 (1-2): 145-149. (in Romanian)
- DANILEVSKY, M. L., A. SMETANA, 2010 - Cerambycidae. Pp. 84-334. In: I. Löbl, A. Smetana (eds), Catalogue of Palaearctic Coleoptera, Vol. 6, Chrysomeloidea, Apollo Books, Stenstrup, 924 pp.

- DEUBEL, FR., 1925 - Ergänzungen und Berichtigungen zu Dr. Karl Petri Siebenbürgens Käferfauna. Jahrbuch des Burzenländer Sächsischen Museums, Braşov, 1: 67-95.
- DÖBERL, M., 2010 - Subfamily Alticinae Newman, 1835. Pp. 491-563. *In*: I. Löbl, A. Smetana (eds), Catalogue of Palaearctic Coleoptera, Vol. 6, Chrysomeloidea. Apollo Books, Stenstrup, 924 pp.
- HOLDHAUS, K., FR. DEUBEL, 1910 - Untersuchungen über die Zoogeographie der Karpathen. Abhandlungen der Kaiserlich-königlichen zoologisch-botanischen Gesellschaft in Wien, 6 (1-6): 1-202.
- HOSKOVEC, M., M. REJZEK, 2009 - Longhorn Beetles (Cerambycidae) of the West Palaearctic Region. Available online at: <http://www.cerambyx.uochb.cz>.
- KIPPENBERG, H., 2010 - Subfamily Chrysomelinae Latreille, 1802. Pp. 390-443. *In*: I. Löbl, A. Smetana (eds), Catalogue of Palaearctic Coleoptera, Vol. 6, Chrysomeloidea. Apollo Books, Stenstrup, 924 pp.
- KOVACS, T., G. HEGYESSY, M. MEDVEGY, 1998-1999 - Foodplant data of longhorn beetles from Europe (Coleoptera: Cerambycidae). *Folia Historico Naturalia Musei Matraensis*, 23: 333-339.
- LOPATIN, I., A. SMETANA, M. SCHÖLLER, I. LÖBL, 2010 - Tribe Cryptocehalini, Gyllenhal, 1813. Pp. 580-617. *In*: I. Löbl, A. Smetana (eds), Catalogue of Palaearctic Coleoptera, Vol. 6, Chrysomeloidea. Apollo Books, Stenstrup, 924 pp.
- LÖBL, I., A. SMETANA (eds.), 2010 - Chrysomeloidea, Volume 6, Apollo Books, Stenstrup, 924 pp.
- MAICAN, S., 2006 - Clytrins (Coleoptera: Chrysomelidae: Clytrinae) from the collections of the "Grigore Antipa" National Museum of Natural History (Bucharest). *Travaux du Muséum National d'Histoire Naturelle "Grigore Antipa"*, 49: 239-257.
- MOSEYKO, A. G., E. SPRECHER-UEBERSAX, 2010 - Subfamily Eumolpinae Hope, 1840. Pp. 619-643. *In*: I. Löbl, A. Smetana (eds), Catalogue of Palaearctic Coleoptera, Vol. 6, Chrysomeloidea. Apollo Books, Stenstrup, 924 pp.
- NITZU, E., I. POPA, A. NAE, C. IUŞAN, 2008 - Faunal researches on the invertebrates (Coleoptera, Orthoptera, Collembola and Araneae) in the Rodnei Mountain Biosphere reserve. *Travaux de l'Institut de Spéologie "Emil Racovitză"*, 47: 3-52.
- OLENICI, N., 2000 - In memoriam Dr. Ing. Igor Ceianu (1925-2000). *Bucovina forestieră*, 8 (1): 66-69. (in Romanian)
- PANIN, S., 1944 - Les Chrysomela de la Roumanie. *Bulletin de la Section Scientifique de l'Académie Roumaine*, 26 (9): 601-625.
- PANIN, S., N. SĂVULESCU, 1961 - Coleoptere: Cerambycidae. *In*: Fauna României, 10 (5): 1-523. Edit. Academiei Române. (in Romanian)
- PAWŁOWSKI, J., 2009 - Endemiczne Bezkręgowce Karpat (Endemic Invertebrates of the Carpathians). *Roczniki Bieszczadzkie*, 17: 89-128.
- PETRI, K., 1912 - Siebenbürgens Käferfauna auf Grund ihrer Erforschung bis zum Jahre 1911. *Verhandlungen und Mitteilungen des Siebenbürgischen Vereins für Naturwissenschaften zu Hermannstadt*: 1-376.
- PETRI, K., 1925 - 1926 - Ergänzungen und Berichtigungen zur Käferfauna Siebenbürgens 1912. *Verhandlungen und Mitteilungen des Siebenbürgischen Vereins für Naturwissenschaften zu Hermannstadt*, 76: 165-206.
- REGALIN, R., L. N. MEDVEDEV, 2010 - Tribe Cytrini Kirby, 1837. Pp. 564-580. *In*: I. Löbl, A. Smetana (eds), Catalogue of Palaearctic Coleoptera, Vol. 6, Chrysomeloidea. Apollo Books, Stenstrup, 924 pp.
- ROŞCA, A., 1973 - Contributions à la connaissance du genre *Cryptocephalus* Fourcr. (Coleoptera-Chrysomelidae) en Roumanie (I). *Travaux du Muséum d'Histoire Naturelle "Grigore Antipa"*, 13: 143-154.

- RUICĂNESCU, A., 1997 - Coleoptere colectate din parcurile naționale Retezat și Valea Cernei. Pp. 57-73. *In: Entomofauna parcurilor naționale Retezat și Valea Cernei. Societatea Lepidopterologică Română Cluj – Napoca. (in Romanian)*
- SAMA, G., 2005 - Fauna Europaea: Cerambycidae. *In: P. Audisio, 2005 - Fauna Europaea: Coleoptera 2. Fauna Europaea version 1.2. Available online at: <http://www.faunaeur.org>.*
- SCHMITT, M., 2010 - Subfamily Criocerinae Latreille, 1804. Pp. 359-368. *In: I. Löbl, A. Smetana (eds), Catalogue of Palaearctic Coleoptera, Vol. 6, Chrysomeloidea. Apollo Books, Stenstrup, 924 pp.*
- SERAFIM, R., 1985 - Contribution à la connaissance des Coléoptères Cerambycides du sud de Roumanie. *Travaux du Muséum d'Histoire Naturelle "Grigore Antipa", 27: 69-94.*
- SERAFIM, R., 1997 - Contributions to the knowledge of the Coccinellidae and Cerambycidae (Coleoptera) in the Igriș Plateau, Săpânța river basin, Maramureș (Romania). *Travaux du Muséum National d'Histoire Naturelle "Grigore Antipa", 37: 307-314.*
- SERAFIM, R., 2005 - Catalogue of the Palaearctic species of Prioninae and Lepturinae (Coleoptera: Cerambycidae) from patrimony of „Grigore Antipa” National Museum of Natural History, Bucharest (Part I). *Travaux du Muséum National d'Histoire Naturelle "Grigore Antipa", 48: 103-117.*
- SERAFIM, R., 2006 - The Catalogue of the Palaearctic species of Lepturinae (Coleoptera: Cerambycidae) from the patrimony of „Grigore Antipa” National Museum of Natural History, Bucharest (Part II). *Travaux du Muséum National d'Histoire Naturelle "Grigore Antipa", 49: 203-238.*
- SERAFIM, R., 2009 - The Catalogue of the Palaearctic species of Necydalinae and Cerambycinae (Coleoptera: Cerambycidae) from the patrimony of “Grigore Antipa” National Museum of Natural History, Bucharest (București) (Part IV). *Travaux du Muséum National d'Histoire Naturelle "Grigore Antipa", 52: 263-292.*
- SILFVERBERG, H., 2010 - Subfamily Zeugophorinae Böving & Craighead, 1931. Pp. 334-335. *In: I. Löbl, A. Smetana (eds), Catalogue of Palaearctic Coleoptera, Vol. 6, Chrysomeloidea. Apollo Books, Stenstrup, 924 pp.*
- TATOLE, V., A. IFTIME, M. STAN, E. I. IORGU, I. IORGU, V. OȚEL, 2009 - Speciile de animale Natura 2000 din România: 1-174. (in Romanian)
- WARCHAŁOWSKI, A., 2003 - Chrysomelidae. The leaf beetles of Europe and the Mediterranean area. *Natura Optima dux. Foundation, Warszawa, 600 pp.*
- *** European Commission, 1992 - Council Directive 92/43/EEC of 21 May 1992 on the conservation of natural habitats and of wild fauna and flora (online). *Official Journal L 206, 22/07/1992 P. 0007-0050. Consolidated version 01.01.2007. Available at: http://ec.europa.eu/environment/nature/legislation/habitatsdirective/index_en.htm.*

Received: April 18, 2011

Accepted: December 5, 2011

Rodica Serafim

Muzeul Național de Istorie Naturală

“Grigore Antipa”

Șos. Kiseleff 1, 011341 București 2, România

e-mail: serafim@antipa.ro

Sanda Maican

Academia Română, Institutul de Biologie București

Splaiul Independenței, 296, 060031,

P.O. Box 56-53, România

e-mail: sanda.maican@ibiol.ro