

Entomological Explorations in Ghana by Dr. S. Endrődy-Younga
11. Endomychidae (Coleoptera)

By H. F. STROHECKER, Miami, U.S.A.

The Coleoptera collected in Ghana by Dr. S. ENDRŐDY-YOUNGA include nineteen species of Endomychidae. Two of these are undescribed species of *Trycherus*.

These specimens were sent to me for study through the kindness of Dr. ZOLTÁN KASZAB, Dr. S. ENDRŐDI and Dr. S. ENDRŐDY-YOUNGA.

Stenotarsus guineensis GERSTAECKER

Stenotarsus guineensis GERST., Mon. Endom., p. 335 (1858).

Lectotype male and allotype female from Old Calabar (Nigeria) in British Museum.

Stenotarsus aequatus GORHAM, Endom. Recitati, p. 55 (1873).

Lectotype female from Senegal in British Museum.

As I have remarked before, there seems to be but one nonstriately punctured species of *Stenotarsus* in West Africa.

Ashanti region, Mampong scarpe, 600 m., N 7: 00, W 1: 22, 8. VIII. 1965 (69 specimens); Kumasi, Nhiasu, 330 m., N 6: 43, W 1: 36 12. IV. 1966, at light (1); Nyinahin range, 600 m., N 6: 53, W 2: 06, 7. IV. 1969 (2); Bobiri forest res., 320 m., N 6: 40, W 1: 15, 10. VIII. 1967 (2), 13. XI. 1965 (1). Western region, Pretsea, Sese area, 24 m, N 4: 55, W 1: 52, netted oil palm plantation, 15. VI. 1969 (1).

Danaë armata ARROW

Trans. Ent. Soc. London, p. 36, fig. 3 (1920) — STROHECKER, Parc. Nat. Garamba, Miss. de Saeger 33 (2), p. 48, fig. 8 (1962) Lectotype male from Mlanje, Nyasaland (Malawi), S. A NEAVE, in British Museum. Also syntype male from Zungeru, Nigeria.

Northern region, Banda-Nkwanta, 150 m., N 8: 22, W 2: 08, light trap, 13-17. IX. 1965 (3), 1/18. VIII. 1965 (2). Brong-Ahafo region, Bui camp, 130 m., N 8: 17, W 2: 15, 27. X. 1965 (1).

Danaë ovata ARROW

Bulletin Ann. Soc. Ent. Belgique 84, p. 53 (1948).

Lectotype male and three other syntypes from Kashitu, N. W. Rhodesia (Zambia),

H. C. DOLLMAN, in British Museum.

Brong-Ahafo region, Bui camp, 130 m., N 8: 17, W 2: 15, 27. X. 1965 (male).

Ashanti region, Kwadaso, 259 m., N 6: 55, W 1: 39, 21. VIII. 1969 (male, female). Western region, Busua, 15 m., N 4: 48, W 1: 56, 6. VI. 1966. (female); Pretsea, 30 m., N 4: 55, W 1: 52, 15. II. 1966 (female).

Danaë aetha STROHECKER

Parc Nat. Garamba, Miss. de Saeger 33 (2), p. 48, fig. 8 (1962).

Ashanti region, Kumasi, Nhiasu, 330 m., N 6: 43, W 1: 36, 16. V. 1967, 24. VI. 1967, 2. VII. 1967 (3 males, female).

Danaë incerta STROHECKER

Parc. Nat. Garamba, Miss. de Saeger, 33 (2), p. 45, fig. 4 (1962).

Northern region, Banda-Nkwanta, 150 m., N 8: 22, W 2: 08, 1. VIII. to 13. X. 1965, ENDRÓDY-YOUNGA (7 males). Brong-Ahafo region, Bui camp 130 m., N 8: 17, W 2: 15, 27. X. to 20. XII. 1965, ENDRÓDY-YOUNGA (3 males, 27 females). Ashanti region, Kwadaso, 320 m., N 6: 42, W 1: 39, 27. II. and 11. III. 1969, ENDRÓDY-YOUNGA (2 females).

Danaë compressa STROHECKER

Ann. Mus. Congo, Zool. 88, p. 266 (1959).

Brong-Ahafo region, Bui camp, 130 m., 16-20. XII. 1965, ENDRÓDY-YOUNGA (1 male).

Geoendomychus hesperus STROHECKER

Mitteil. Zool. Mus. Berlin 35, p. 186 (1959).

Ashanti region, Bobiri forest res., 320 m., N 6: 40, W 1: 15, ENDRÓDY-YOUNGA, 27. III. 1966, 10-17. X. 1965, 10. VIII. 1967, 13. XI. 1965 (17) Western region, Pretsea, 30 m., N 4: 55, W 1: 52, 15. II. 1966, ENDRÓDY-YOUNGA (3).

Afralexia rufa STROHECKER

Opusc. Zool. Budapest, 7 (1), 1967. p. 242, fig. 1-5. (1967).

Ashanti region, Bobiri forest res., 320 m., N 6: 40, W 1: 15, 15. II. 1969 and 4. V. 1969, ENDRÓDY-YOUNGA (2). Western region, Pretsea, 30 m., N 4: 55, W 1: 52, 1. II. 1966, ENDRÓDY-YOUNGA (2). Volta region, Amedzofe, 830 m., N 6: 52, W 0: 26, 31. VIII. 1967, ENDRÓDY-YOUNGA (1).

All specimens are female and resemble closely *A. rufa*, described from the Brazzaville Congo. Detailed study of series of these minute beetles may show specific differentiation not now evident.

Mychothenus sp. ? **tropicalis** STROHECKER

Parc. Nat. Garamba, Miss. de Saeger 33 (2), p. 55, fig. 15 (1962).

A single specimen closely resembles *M. tropicalis*.

Brong-Ahafo region, Kintampo cataract, Fullner Falls, 200 m., N 8: 02, W 1: 42, 15. VIII. 1965.

Lycoperdina morosa (ARROW)

Trans. Ent. Soc. London, p. 23 (1920), *Lycoperdinella*: Ibid., p. 485 (1923), *Lycoperdinodes*. Lectotype male and allotype female from Salisbury, Rhodesia, April, G. A. K. MARSHALL, in British Museum. Syntype male (author's coll.) and female (B. M.) from Namaïla, N. W. Rhodesia, H. DOLLMAN. Ashanti region, Kumasi, Nhiasu, 330 m., N 6: 43, W 1: 36, 2-5 and 21-23. VI. 1965 (male, 2 females) Abafour, Opro R., 320 m., N 7: 07, W 1: 48, 7. IV. 1966 (female). Northern region, Banda-Nkwanta, 150 m., N 8: 22, W 2: 08, 7-13. X. 1965. (female).

Occurs widely over tropical Africa. I have recently seen a specimen from Grande Comore.

Anylopus rufipes ACHARD

Fragments Ent., p. 141 (1925).

Lectotype male from Sam-Kita, Ogooué R., Congo Français in Prague Museum.

Brong-Ahafo region, Bui camp, 130 m., N 8: 17, W 2: 15, 1-5. XI. 1965 (male).

Ancylopus bisignatus GERSTAECKER

Mon. Endom., p. 192 (1858).

The Ghana specimens listed here resemble those from Garamba Parc in coloration; elytra black, each with two large orange-red spots. Structural differences between Senegal (topotypic) specimens and those from Ivory Coast, Ghana and Garamba Parc are not yet apparent to me.

Ashanti region Kwadaso, 320 m., N 6: 42, W 1: 39, 25-27. II. 1969, 11. III. 1969 (3 males, 3 females); Kumasi, Nhiasu, 330 m., N 6: 43, W 1: 36, 24. VI. 1967, 18. X. and 10. XII. 1967 (3 males, 3 females).

Indalmus hova ARROW

Trans. Ent. Soc. London, p. 22 (1920).

Brong-Ahafo region, Bui camp, 130 m., N 8: 17, W 2: 15, 1-5. XI. 1965 (male).

Indalmus decipiens STROHECKER

Ann. Hist.-nat. Mus. Nat. Hung., ser. nov. 8, p. 274, fig. 42 (1957).

Ashanti region, Kwadaso, 259 m., N 6: 55, W 1: 39, 16 males 10 females taken by Dr. S. ENDRÓDY-YOUNGA on 7. IV. 1966 and from 25. II. to 18. III. 1969.

Mycetina africana GORHAM

Trans. Ent. Soc. London, p. 442 (1874).

Lectotype (monotype?) female from Cameroon Mts. in British Museum.

Ashanti region, Bobiri forest res., 320 m., N 6: 40, W 1: 15, 10. VIII. 1967 (female).

Trycherus rufocinctus PIC

Trycherus rufocinctus PIC, Mém. Exot.-Ent. 55, p. 6 (1930).

Trycherus bifasciatus VILLIERS (nec GERSTAECKER), Bull. IFAN XV, p. 1480, fig. 57-62 (1953).

Trycherus laticlavatus STROHECKER, Rev. Zool. Bot. Afr. XLIX, p. 149, fig. 16a-c (1954).

There are two male "types" of *rufocinctus* in the PIC collection, one from Yalinga, Oubangi and the other with label "Congo". The Oubangi specimen is *T. erotyloides* GERSTAECKER but, inasmuch as PIC cites only "Congo", it appears that the Congo specimen must be considered the lectotype.

Ashanti region, Bobiri forest res., 320 m., N 6: 40, W 1: 15, 13. XI. 1965, 20. III. 1966, 6. III. 1967 (2 males, 3 females).

Trycherus erotyloides GERSTAECKER

Archiv Naturg. 23, p. 223 (1857) - VILLIERS, Bull. IFAN XV, p. 1498, fig. 126-131 (1953).

I have recently examined lectotype female from Old Calabar and another syntype female with same data in the British Museum but have identified no specimens in the collection made by Dr. ENDRÓDY as typical *erotyloides*.

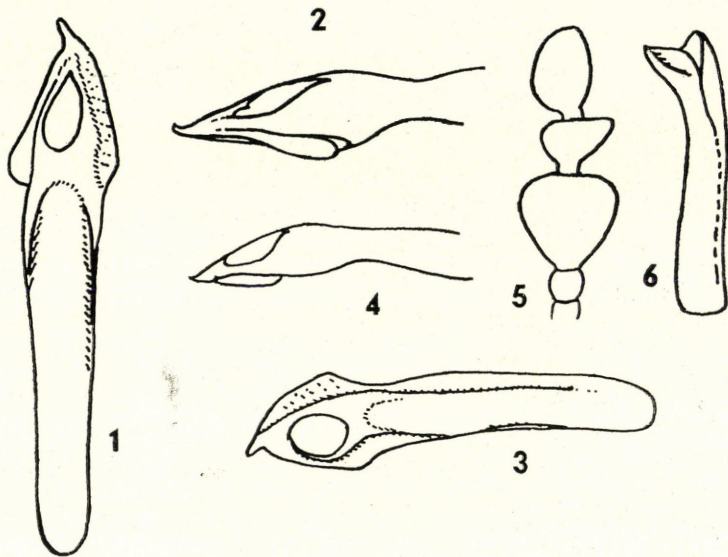
Trycherus ghanensis sp. n. Fig. 3, 4.

Head, antennae and legs black, under surface dark red with¹ metepisterna blackish. Pronotum red. Elytra with basal fifth red, this colour continues narrowly along margin and broadly along suture to the reddish-yellow apex. Disc of elytra

black with yellow cross band at anterior third of length, band u-shaped in front, bisinuate behind, merging at its outer and inner ends with reddish bands of margin and suture. Length 8 mm.

In the single male at hand the antennae are stout, article 3 less than thrice as long as wide, article 8 wider than 7 and half as wide as club. Protibia widened at apex and there with a minute internal tooth. Mesotibia with inner edge excavate in distal third and with a sharp tuft of setae at proximal end of excision. Metatibia very wide, flattened, with an angulate internal flange. Fourth abdominal sternite with a small tubercle.

Holotype male from Ghana: Ashanti region, Bobiri forest res., 320 m., N 6: 40, W 1: 15, Dr. S. ENDRÓDY-YOUNGA, nr. 255, singling 10. VIII. 1967, in Hungarian Natural History Museum.



Figs. 1-2. *Trycherus endroedii* sp. n. - aedeagus, 1, dorsal view; 2, right side of spex. - Figs. 3-4. *Trycherus ghanensis* sp. n. - aedeagus, 3, dorsal view; 4, right side of apex. - Figs. 5-6. *Danaë ovata* ARROW, lectotype, 5 antennal club; 6, aedeagus, dorsal view.

Closely related to *T. erotyloides* and *T. centurio*. From the male of *erotyloides* it differs slightly in form of aedeagus and in having a tubercle on the fourth instead of the third sternite; the metatibia is also broader and more angulately flanged in *ghanensis*. *T. centurio* has the aedeagus much like *ghanensis* but the first four sternites have a small tubercle.

GERSTAECKER's description of *T. erotyloides* was based on two females from Old Calabar and these are the only topotypes which I have seen. VILLIERS (Bull. Ifan 15, p. 1498) figured tibiae and aedeagus of a specimen diagnosed by him as the male of *erotyloides*; my own unpublished conjectures were in agreement with his diagnosis. Males from Yoko, Cameroun are closely similar to VILLIERS' material from Gabon and Moyen Congo. Males from Eala near Mbandaka (Coquilhatville) are also very similar to Gabon males in all features except lack of the tubercle on sternite three. Perhaps we have to do with a Rassenkreis.

Trycherus endroedium sp. n. Fig. 1, 2.

Head, antennae and legs black, under surface dark red, pronotum dark red, elytra black, each with a narrow yellow cross band at anterior third and a yellow pre-apical crescent. Length 10 mm. Antennae stout, article 8 wider than 7 and half as wide as club. Pronotum remarkably small, its front angles acutely produced, sides slightly rounded to front angles, straight and divergent to the slightly acute hind angles, lateral sulci short, basal sulcus sharply impressed disc thickly punctured. Elytra 1 1/2 times as wide and 4 times as long as pronotum (mid-line), long-cordiform, tapering behind. The yellow cross band is broadly arcuate in front, weakly tridentate behind. Elytral apex, behind yellow crescent, blackish, paler than disc.

In the unique male the aedeagus resembles that of *erotyloides*, and protibia is typical of genus. Mesotibia with inner edge somewhat excavate in distal third but without setal tuft above excision. Metatibia broad, flattened, its inner edge obtusely flanged near mid-length. Second and third abdominal sternites flattened at middle, with a small tubercle on hind margin at each side of flattened area; fourth sternite with a transverse ridge.

Holotype male from Ghana: Ashanti region: Bobiri forest res., 320 m., N 6: 40, W 1: 15, Dr. S. ENDRÓDY-YOUNGA, Nr. 141, 27. III. 1966 in Hungarian Natural History Museum.

In size and long-cordate form this species resembles *T. basilewskyi* STROH. of southern Congo.

Trycherus senegalensis GERSTAECKER

Trycherus senegalensis GERST., Archiv Naturg. 23, p. 223 (1857).

Lectotype male, allotype female with MS label in British Museum.

Balius senegalensis GUÉRIN, Archives Ent. 1, p. 262 (1857). Lectotype male from Senegal with MS label, allotype female with MS label from Senegal, another syntype female from "Guin", all in British Museum.

Trycherus spinipes ARROW, Trans. Ent. Soc. London, p. 12 - VILLIERS, Bull. Ifan 15, p. 1486 (1953).

Male from Assinie, Guinea (Lagos) with ARROW's notation "Type" on name label is designated as lectotype. Other syntypes are: male from Ondo, Lagos; female from Bibianaha, Gold Coast; two females from Old Calabar. All specimens in British Museum. The name *Olenus senegalensis* used by DEJEAN and THOMSON must be considered nomen nudum.

Northern region, Banda-Nkwanta, 150 m., N 8: 22, W 2: 08, 27-29. IX. 1965; ENDRÓDY-YOUNGA (male). Ashanti region, Kwadaso, 320 m., N 6: 42, W 1: 39, 11. III. 1969, ENDRÓDY-YOUNGA (male); Kumasi, Nhiasu, 330 m., N 6: 43, W 1: 36, 23-29. V. 1965, 21-23. VI. 1965, 13. X. 1965, 24-28. II. 1966, 24. VI. 1967, 7. II. 1968, 12. II. 1969, ENDRÓDY-YOUNGA (male, 7 females).

Author's address: Prof. H. F. STROECKER
Department of Biology
University of Miami
P.O. Box 9118
Coral Gables
Florida 33124, USA

