

Notes on Papuan Endomychidae with the Description of a New Genus and Species (Coleoptera)

By H. F. STROHECKER, University of Miami

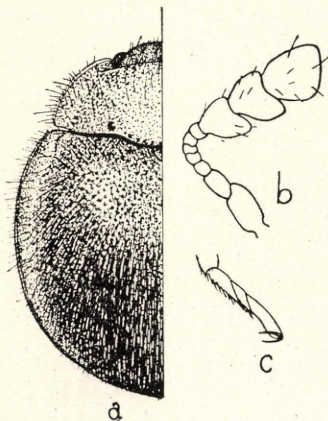
Recently Dr. Z. K a s z a b sent to me for study a considerable lot of endomychids from the Hungarian National Museum. Among the specimens were a few from New Guinea, including a topotype of *Coryphus birói* Csiki.

My synopsis of the endomychid genera was prepared during and immediately following the great war of 1939—45 and I was unable to properly place the name *Coryphus*. Dr. K a s z a b has graciously allowed me to study the type of *C. birói* and the generic name proves to be a synonym of *Asymbius* Gorham. The species of this genus are very similar and each is known from very little material. An adequate synopsis of the genus must await additional specimens, making possible the evaluation of individual variations and sexual differences.

Papuella genus novum

Similar in appearance to *Bystus* Thomson, highly convex, subhemispherical. Antennae short, 10-jointed, the last three joints forming a broad club. Tarsi 3-jointed, linear. Last joint of maxillary palps cylindrical, minutely truncate at apex. End joint of labial palps quadrate. Prosternum prolonged posteriorly behind front coxae, its apex rounded and margined. Mesosternum transverse, excavated to receive the prosternum. Pronotum strongly transverse, briefly and broadly lobed at middle of its base, narrowly margined at sides. The lateral sulci are represented by punctiform foveae. There is no distinct transverse sulcus but a row of punctures follows the contour of the basal lobe.

In most of its features this genus is close to *Bystodes* but the pronotum completely lacks the prominent discal carinae of that genus.



Papuella birolecta sp. n. (a),
Antenna (b), Fore tarsus (c).

Papuella birolecta sp. n. (Fig.)

Ferruginous in color, clothed with pale yellow pubescence. Antennae with stalk pale yellow, the club testaceous. Elytra narrowly margined, their submarginal area somewhat tumid, paler in color than the disc and more shining. Pronotum finely, elytra more coarsely and closely punctured. — Length 1,7 mm, width 1 mm.

Holotype (sex?): New - Guinea, Stephansort, Astrolabe Bay, 1900, L. Biró (Hungarian National Museum). Paratypes: four specimens with the same data as the holotype (Hungarian National Museum and author's collection).