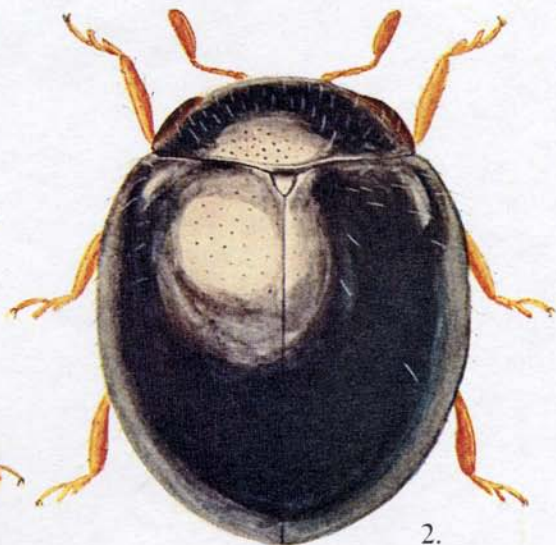


Plate I

1. *Sukunahikona japonica* H. Kamiya (paratype) (X ca.50)
2. *Serangium japonicum* Chapin (X ca.35)
3. *Sticholotis substriata* Crotch (X ca.22)
4. *Plotina versicolor* Lewis (X ca.20)



1.



2.



3.



4.

Plate II

1. *Sukunahikona bicolor* H. Kamiya (paratype) (X ca.30)
2. *Serangium punctum* Miyatake (X ca.20)
3. *Serangium ryukyuense* H. Kamiya (paratype) (X ca.20)
4. *Serangium ruficolle* H. Kamiya (allotype) (X ca.20)
5. *Microserangium shikokense* Miyatake (paratype) (X ca.20)
6. *Microserangium okinawense* Miyatake (X ca.20)
7. *Sticholotis punctata* Crotch (X ca.14)
8. *Sticholotis pictipennis* Lewis (holotype) (X ca.16)
(illustrated based on a black and white sketch by
Dr. K. Morimoto)
9. *Sticholotis hilleri* Weise (X ca.14)
10. *Sticholotis morimotoi* H. Kamiya (paratype) (X ca.18)
11. *Nesolotis punctifrons* Miyatake (holotype) (X ca.24)
12. *Nesolotis azumai* Sasaji (paratype) (X ca.30)
13. *Nesolotis amabilis* (H. Kamiya)(holotype) (X ca.27)
14. *Stethorus yezoensis* Miyatake (holotype) (X ca.30)
15. *Stethorus emarginatus* Miyateke (holotype) (X ca.27)
16. *Stethorus aptus tsutsuii* Nakane et M. Araki (X ca.30)

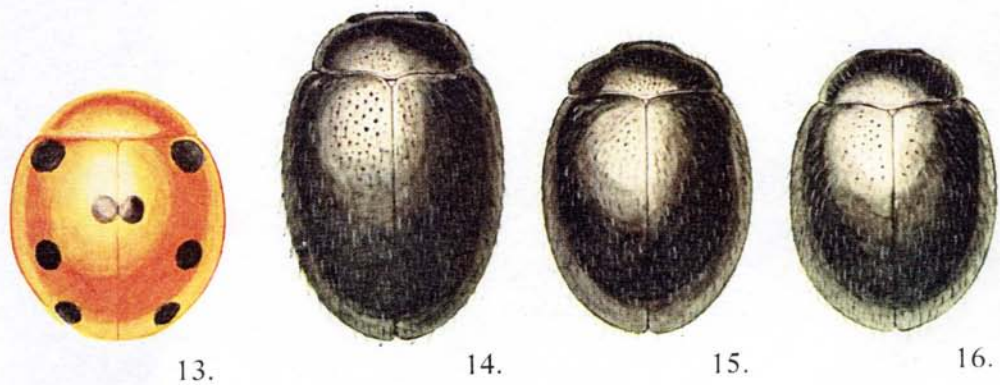
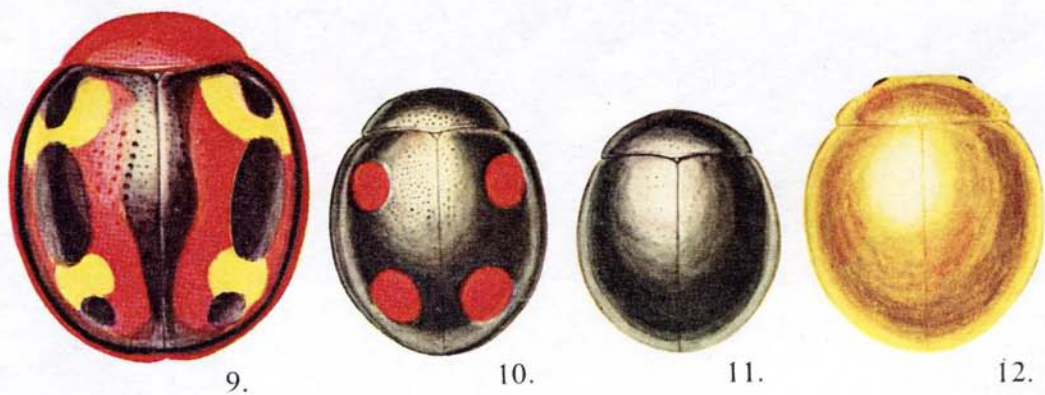
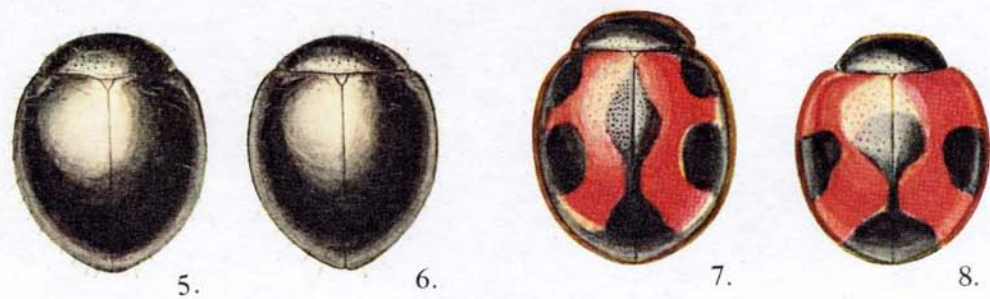
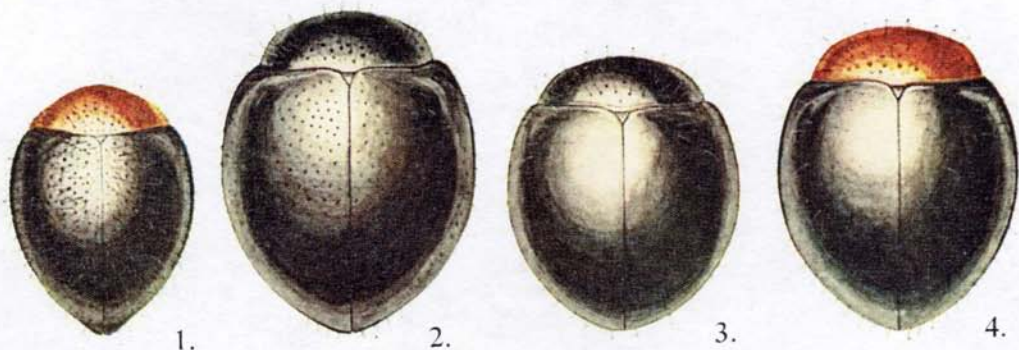
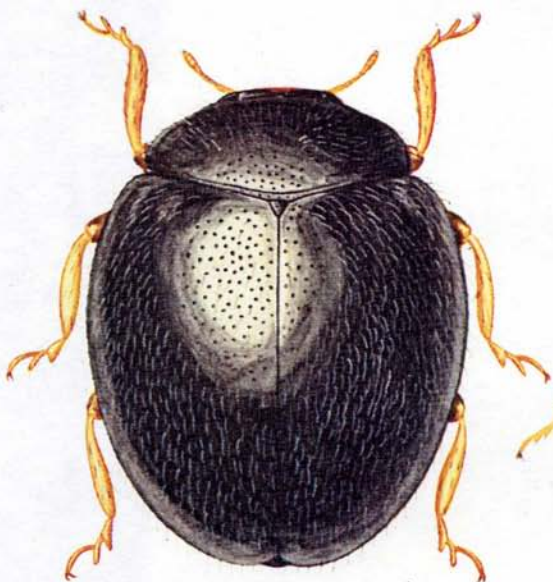


Plate III

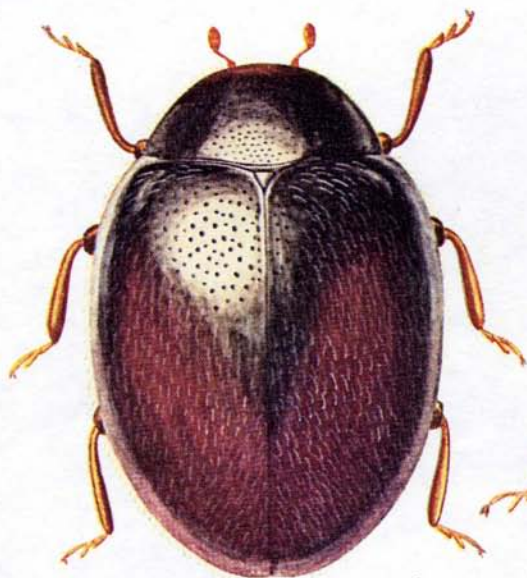
1. *Stethorus japonicus* H. Kamiya (paratype) (X ca.50)
2. *Axinoscymnus beneficus* H. Kamiya (paratype) (X ca.35)
3. *Keiscymnus tosaensis* Sasaji (holotype) (X ca.50)
4. *Scymnus (Scymnus) tsushimensis* Sasaji (holotype) (X ca.26)



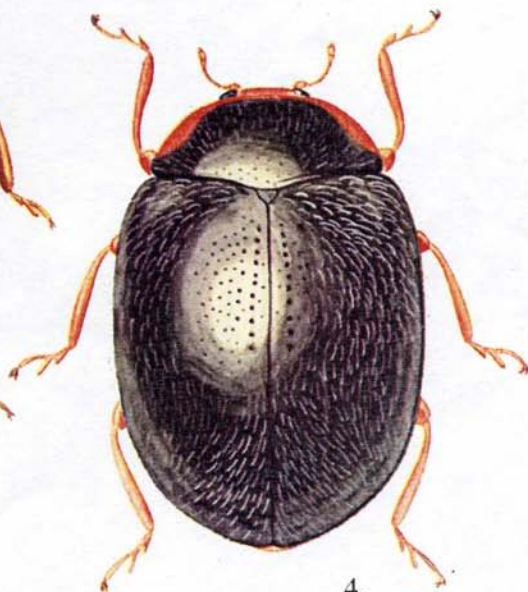
1.



2.



3.



4.

Plate IV

- | | |
|---|-----------|
| 1. <i>Pseudoscymnus hareja</i> (Weise) | (X ca.17) |
| 2. <i>Pseudoscymnus hareja</i> (Weise), paler form | (X ca.17) |
| 3. <i>Pseudoscymnus seboshii</i> (Ohta) | (X ca.17) |
| 4. <i>Pseudoscymnus quinquepunctatus okinawanus</i> H. Kamiya
(paratype) | (X ca.17) |
| 5. <i>Pseudoscymnus sylvaticus</i> (Lewis) | (X ca.15) |
| 6. <i>Pseudoscymnus pilicrepus</i> (Lewis) | (X ca.15) |
| 7. <i>Pseudoscymnus nakanei</i> (M. Araki) | (X ca.17) |
| 8. <i>Pseudoscymnus kurohime</i> Miyatake | (X ca.17) |
| 9. <i>Pseudoscymnus lewisi</i> (H. Kamiya) | (X ca.17) |
| 10. <i>Pseudoscymnus nagasakiensis</i> (H. Kamiya) | (X ca.17) |
| 11. <i>Axinoscymnus nigripennis</i> H. Kamiya (allotype) | (X ca.26) |
| 12. <i>Axinoscymnus rai</i> H. Kamiya (allotype) | (X ca.26) |
| 13. <i>Nephus kompirasanus</i> (H. Kamiya) (holotype) | (X ca.20) |
| 14. <i>Nephus kaiensis</i> (H. Kamiya) (holotype) | (X ca.20) |
| 15. <i>Nephus yotsumon</i> (H. Kamiya) (paratype) | (X ca.20) |
| 16. <i>Nephus ryuguus</i> (H. Kamiya) | (X ca.20) |



1.



2.



3.



4.



5.



6.



7.



8.



9.



10.



11.



12.



13.



14.



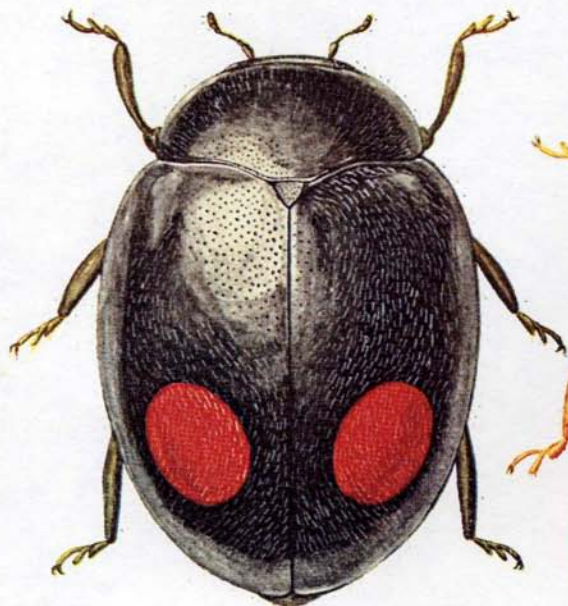
15.



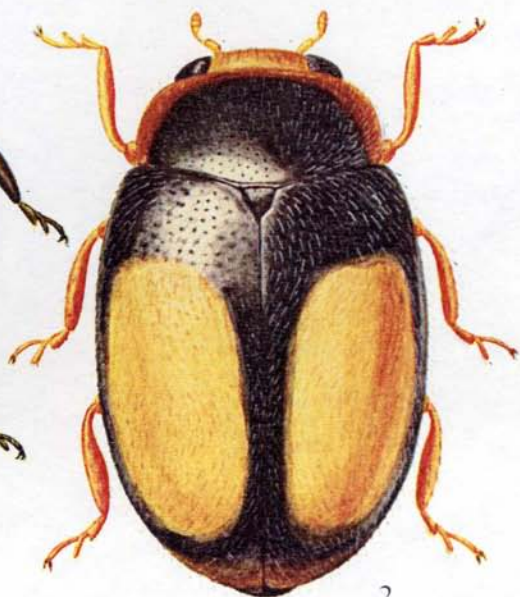
16.

Plate V

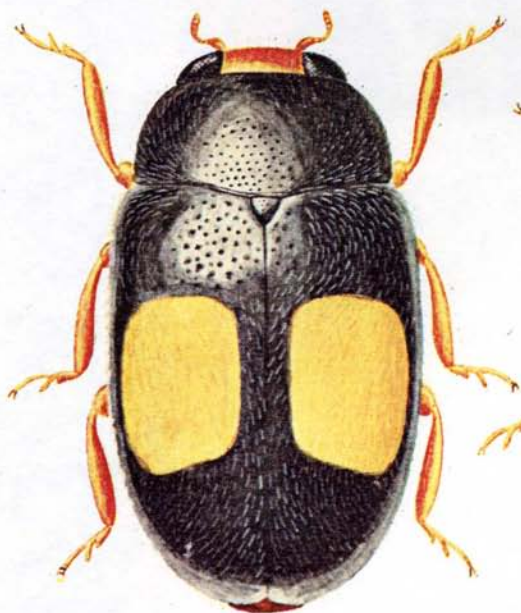
1. *Nephus phosphorus* (Lewis) (X ca.40)
2. *Nephus patagiatus* (Lewis) (X ca.40)
3. *Nephus ryukyuensis* Sasaji (holotype) (X ca.40)
4. *Nephus tagiapatus* (H. Kamiya) (paratype) (X ca.40)



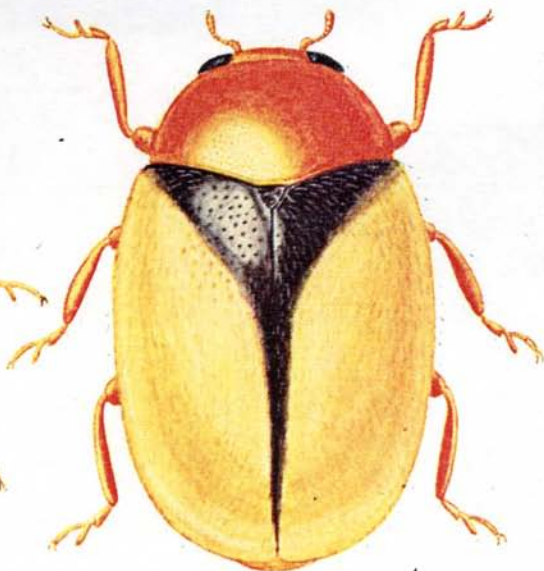
1.



2.



3.



4.

Plate VI

1. *Scymnus (Pullus) kimotoi* H. Kamiya (paratype) (X ca.20)
2. *Scymnus (Pullus) puellaris* M. Araki (holotype) (X ca.20)
3. *Scymnus (Pullus) dorcatomoides* Weise (X ca.17)
4. *Scymnus (Pullus) rectoides* Sasaji (holotype) (X ca.17)
5. *Scymnus (Pullus) miyatakei* H. Kamiya (paratype) (X ca.17)
6. *Scymnus (Pullus) rectus* (Ohta) (X ca.17)
7. *Scymnus (Pullus) contemptus* (Weise) (X ca.17)
8. *Scymnus (Pullus) hatomensis* H. Kamiya (paratype) (X ca.25)
9. *Scymnus (Pullus) ruficeps* (Ohta) (X ca.17)
10. *Scymnus (Pullus) giganteus* H. Kamiya (paratype) (X ca.15)
11. *Scymnus (Pullus) japonicus* Weise (X ca.15)
12. *Scymnus (Pullus) osakaensis* M. Araki (holotype) (X ca.15)
13. *Scymnus (Pullus) takabayashii* (Ohta) (X ca.15)
14. *Scymnus (Pullus) kawamurai* (Ohta) (X ca.15)
15. *Scymnus (Pullus) sodalis* (Weise) (X ca.15)
16. *Scymnus (Pullus) hilaris* Motschulsky (X ca.15)



1.



2.



3.



4.



5.



6.



7.



8.



9.



10.



11.



12.



13.



14.



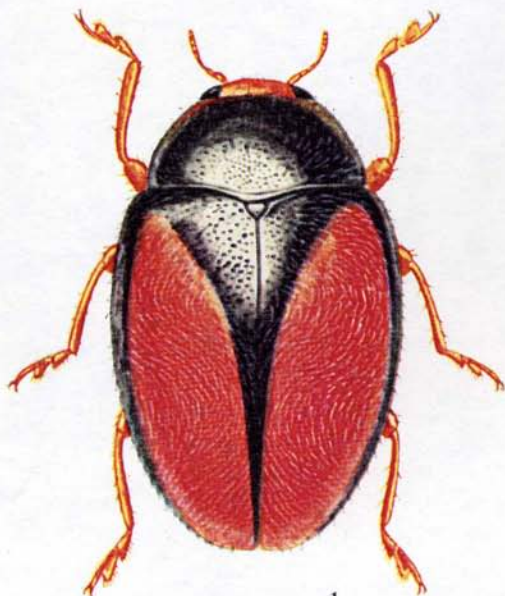
15.



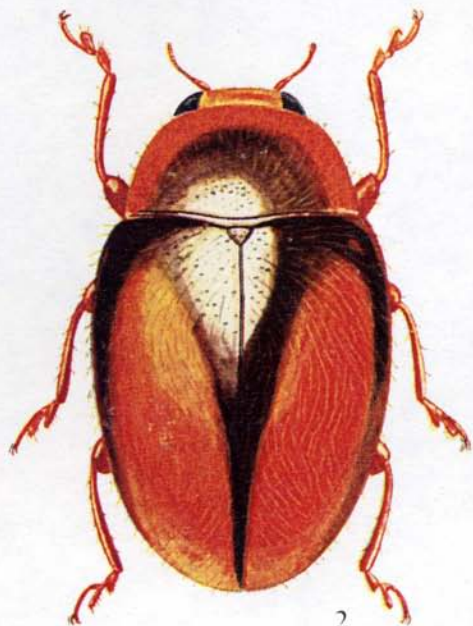
16.

Plate VII

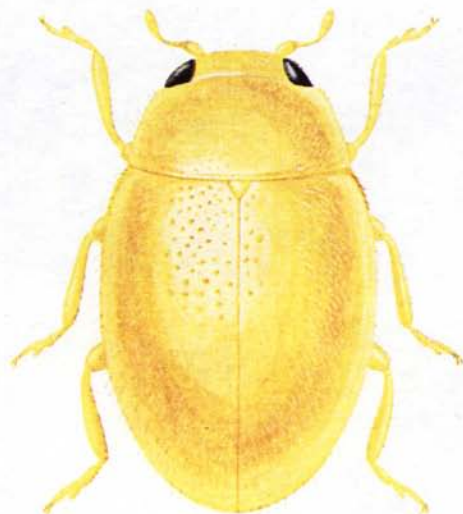
1. *Scymnus (Neopullus) hoffmanni* Weise (X ca.30)
2. *Scymnus (Neopullus) fuscatus* Boheman (X ca.30)
3. *Scymnus (Neopullus) taishuensis* Sasaji (holotype) (X ca.35)
4. *Scymnus (Pullus) syoitii* Sasaji (paratype) (X ca.50)



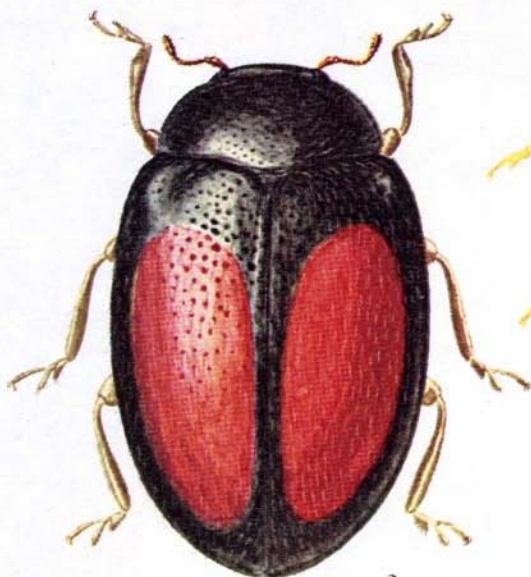
1.



2.



4.



3.

Plate VIII

1. *Scymnus (Scymnus) paganus* Lewis (X ca.16)
2. *Scymnus (Scymnus) nigrosuturalis* H. Kamiya (X ca.16)
3. *Scymnus (Scymnus) miyamotoi* Nakane et M. Araki (paratype) (X ca.16)
4. *Scymnus (Scymnus) marinus* H. Kamiya (X ca.16)
5. *Scymnus (Pullus) sapporensis* (Ohta) (holotype) (X ca.18)
(illustrated based on a free-hand sketch, dorsal pubescence artificially removed partly).
6. *Scymnus (Pullus) takaraensis* Nakane et M. Araki (holotype) (X ca.17)
(dorsal pubescence artificially removed)
7. *Scymnus (Pullus) kaguyahime* H. Kamiya (paratype) (X ca.20)
8. *Scymnus (Pullus) vancouveris* H. Kamiya (allotype) (X ca.20)
9. *Scymnus (Neopullus) babai* Sasaji (paratype) (X ca.20)
10. *Scymnus (Neopullus) ohtai* Sasaji (holotype) (X ca.20)
11. *Scymnus (Neopullus) otohime* H. Kamiya (paratype) (X ca.20)
12. *Scymnus (Neopullus) yamato* H. Kamiya (X ca.17)
13. *Scymnus (Nipponopullus) pirikamenoko* H. Kamiya (X ca.23)
14. *Horniolus kyushuensis* Miyatake (holotype) (X ca.16)
15. *Horniolus amamensis* Miyatake (X ca.16)
16. *Horniolus okinawensis* Chūjō et Miyatake (X ca.19)

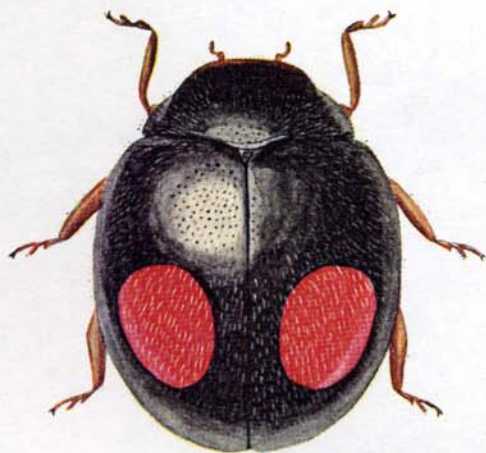


Plate IX

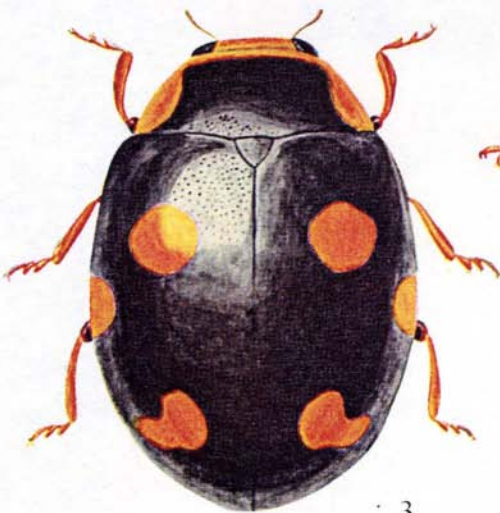
1. *Horniolus fortunatus* (Lewis) (X ca.20)
2. *Cryptogonus orbiculus* (Gyllenhal) (X ca.20)
3. *Hyperaspis gyotokui* H. Kamiya (paratype) (X ca.20)
4. *Amida tricolor* (Harold) (X ca.16)



1.



2.



3.



4.

Plate X

- | | | |
|-----|---|------------|
| 1. | <i>Cryptolaemus motrouzieri</i> Mulsant | (X ca. 8) |
| 2. | <i>Hyperaspis japonica</i> (Crotch) | (X ca. 13) |
| 3. | <i>Hyperaspis asiatica</i> Lewis | (X ca. 13) |
| 4. | <i>Hyperaspis babai</i> H. Kamiya (paratype) | (X ca. 13) |
| 5. | <i>Cryptogonus horishanus</i> (Ohta) | (X ca. 15) |
| 6. | <i>Telsimia chujoi</i> Miyatake | (X ca. 25) |
| 7. | <i>Chilocorus mikado</i> Lewis | (X ca. 8) |
| 8. | <i>Chilocorus kuwanae</i> Silvestri | (X ca. 8) |
| 9. | <i>Chilocorus esakii</i> H. Kamiya (holotype) | (X ca. 8) |
| 10. | <i>Chilocorus amamensis</i> H. Kamiya (holotype) | (X ca. 8) |
| 11. | <i>Chilocorus ishigakensis</i> H. Kamiya (holotype) | (X ca. 8) |
| 12. | <i>Rodolia pumila</i> Weise | (X ca. 8) |
| 13. | <i>Rodolia concolor</i> (Lewis) | (X ca. 8) |
| 14. | <i>Rodolia rufocincta</i> Lewis | (X ca. 8) |
| 15. | <i>Rodolia cardinalis</i> (Mulsant) | (X ca. 8) |
| 16. | <i>Rodolia quadrimaculata</i> Mader | (X ca. 8) |
- (illustrated from a Formosan material)

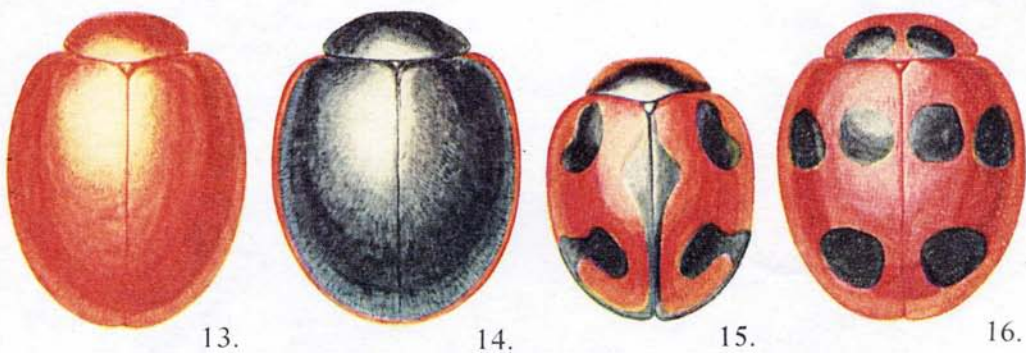
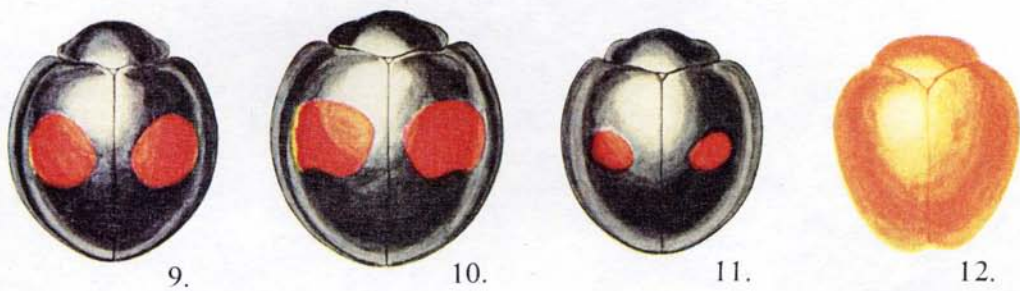
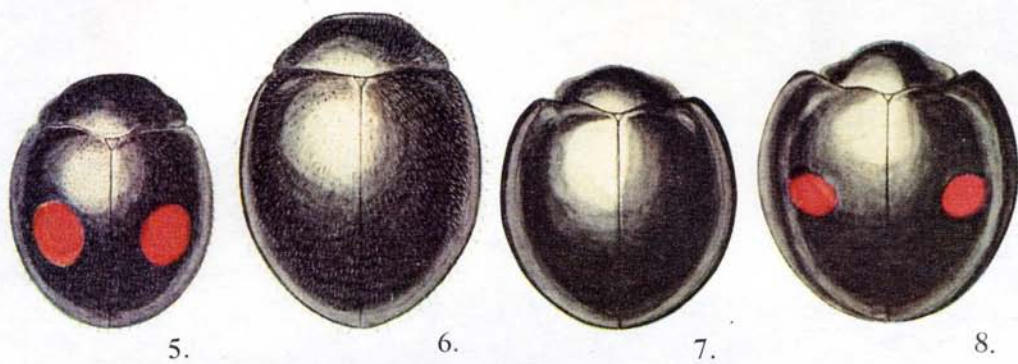
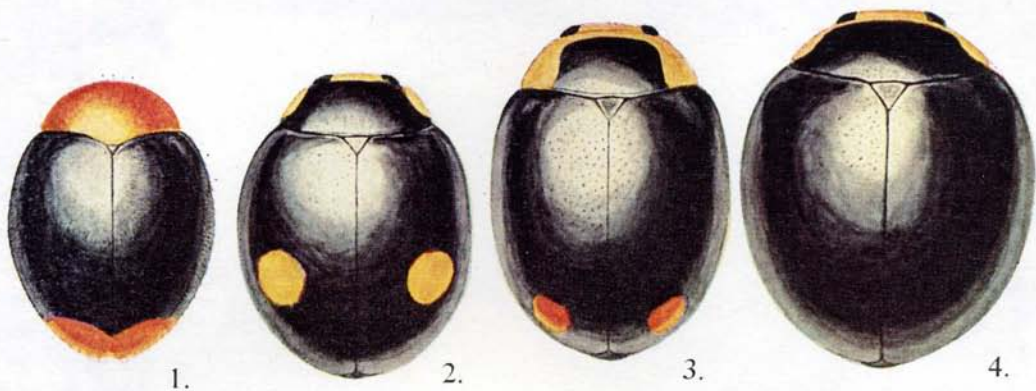


Plate XI

1. *Telsimia nigra* (Weise) (X ca.35)
2. *Phymatosternus lewisii* (Crotch) (X ca.15)
3. *Chilocorus rubidus* (Hope) (X ca.11)
4. *Arawana isensis* (H. Kamiya) (holotype) (X ca.16)

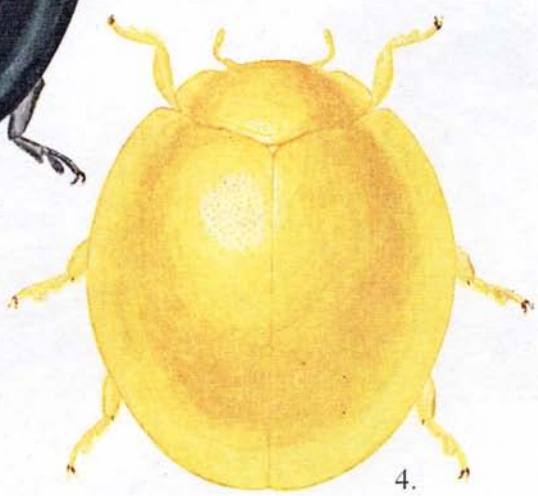
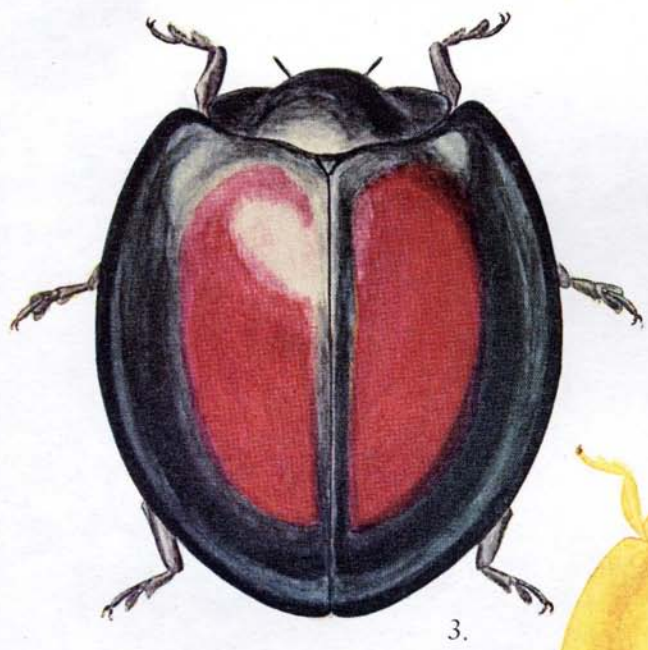
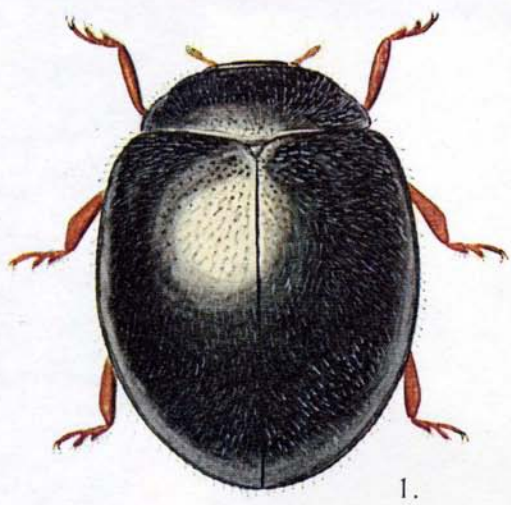
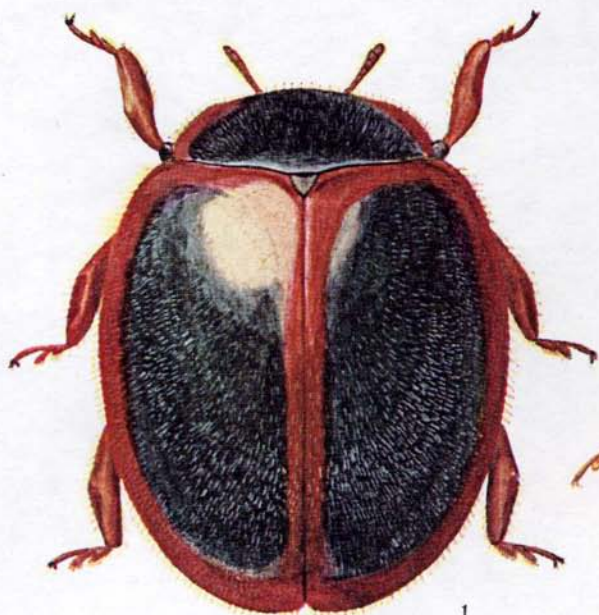


Plate XII

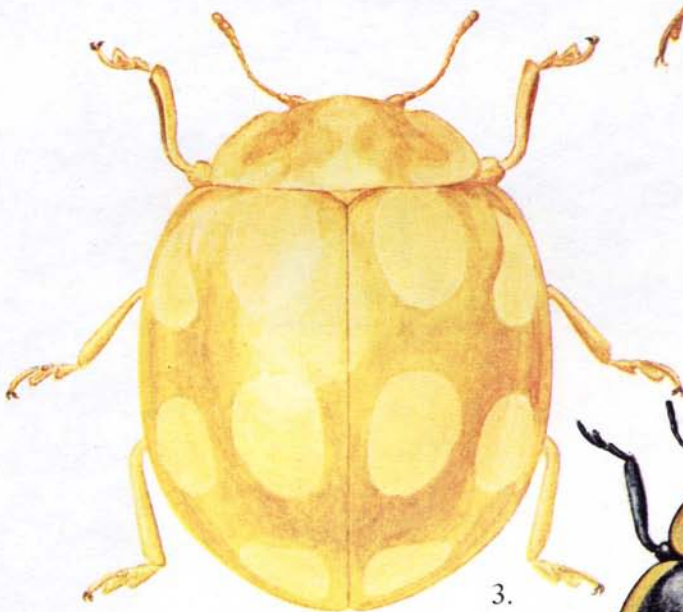
1. *Rodolia limbata* (Motschulsky) (X ca.15)
2. *Hippodamia tredecimpunctata timberlakei* Capra (X ca.10)
3. *Calvia decemguttata* (Linnaeus) (X ca.12)
4. *Neomysia ramosa* (Faldermann) (X ca.10)



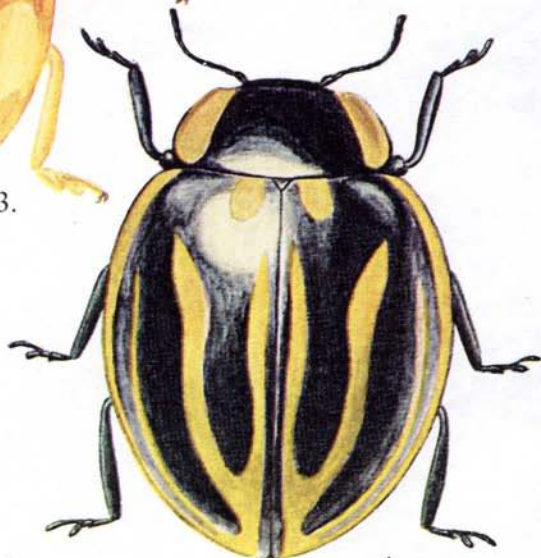
1.



2.



3.



4.

Plate XIII

1. *Anisosticta kobensis* Lewis (X ca.9)
2. *Adalia conglomerata* (Linnaeus), typical form (X ca.9)
3. *Adalia conglomerata* (Linnaeus), *ronina*-form (X ca.9)
4. *Propylea quatuordecimpunctata* (Linnaeus) (X ca.9)
5. *Propylea japonica* (Thunberg), *japonica*-form (X ca.9)
6. *Propylea japonica* (Thunberg), *dionea*-form (X ca.9)
7. *Propylea japonica* (Thunberg), *suturata*-form (X ca.9)
8. *Propylea japonica* (Thunberg), *tristis*-form (X ca.9)
9. *Coccinula crotchii* (Lewis) (X ca.9)
10. *Coccinula quatuordecimpustulata* (Linnaeus) (X ca.9)
11. *Synharmonia hirayamai* Yuasa (X ca.9)
12. *Protocaria scalaris* Timberlake (X ca.9)
13. *Illeis koebelei koebelei* Timberlake (X ca.8.5)
14. *Illeis koebelei amamiana* Miyatake (X ca.8.5)
15. *Vibidia duodecimguttata* (Poda) (X ca.8.5)
16. *Vibidia nagayamai* M. Araki (X ca.8.5)



1.



2.



3.



4.



5.



6.



7.



8.



9.



10.



11.



12.



13.



14.



15.



16.

- | | |
|---|------------|
| 1. <i>Coccinella septempunctata brucki</i> Mulsant | (X ca.5) |
| 2. <i>Lemnia saucia calypso</i> Mulsant | (X ca.4.8) |
| 3. <i>Lemnia biplagiata</i> (Swartz), <i>biplagiata</i> -form | (X ca.4.8) |
| 4. <i>Lemnia biplagiata</i> (Swartz), <i>melanota</i> -form | (X ca.4.8) |
| 5. <i>Menochilus sexmaculatus</i> (Fabricius), <i>quadriplagiatus</i> -form | (X ca.4.8) |
| 6. <i>Menochilus sexmaculatus</i> (Fabricius), <i>sexmaculatus</i> -form | (X ca.4.8) |
| 7. <i>Harmonia (Ptychanatis) octomaculata</i> (Fabricius) | (X ca.5) |
| 8. <i>Harmonia (Leis) dimidiata</i> (Fabricius) | (X ca.4) |
| (illustrated from a Formosan material) | |
| 9. <i>Harmonia (Ptychanatis) axyridis</i> (Pallas), <i>succinea</i> -form | (X ca.5) |
| 10. <i>Harmonia (Ptychanatis) axyridis</i> (Pallas), <i>axyridis</i> -form | (X ca.5) |
| 11. <i>Harmonia (Ptychanatis) axyridis</i> (Pallas), <i>spectabilis</i> -form | (X ca.5) |
| 12. <i>Harmonia (Ptychanatis) axyridis</i> (Pallas), <i>conspicua</i> -form | (X ca.5) |
| 13. <i>Synonycha grandis</i> (Thunberg) | (X ca.4) |
| 14. <i>Anatis halonis</i> Lewis | (X ca.4.8) |
| 15. <i>Neomysia nipponica</i> Yuasa | (X ca.4.8) |
| 16. <i>Aiolocaria mirabilis</i> (Motschulsky) | (X ca.4) |



1.



2.



3.



4.



5.



6.



7.



8.



9.



10.



11.



12.



13.



14.



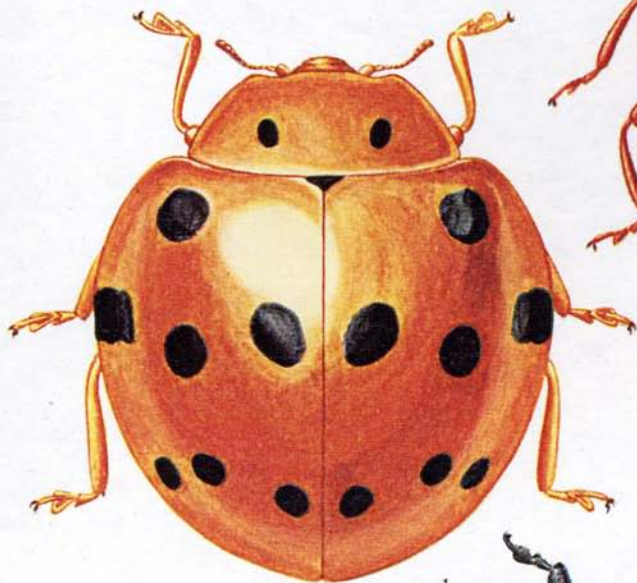
15.



16.

Plate XV

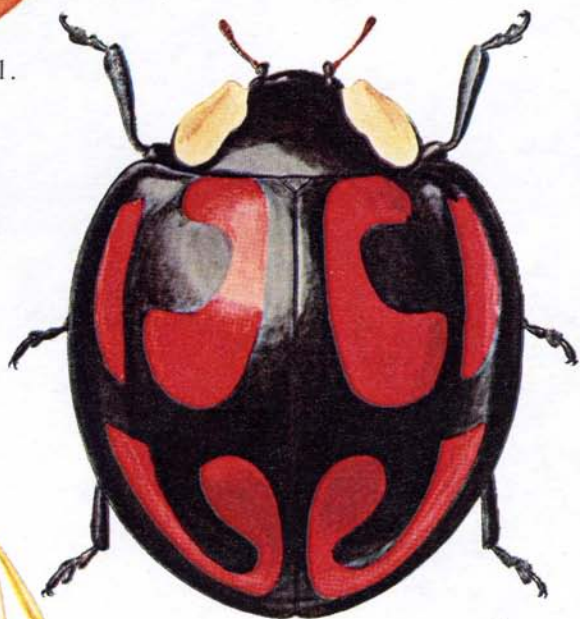
1. *Callicaria superba* (Mulsant) (X ca. 6)
2. *Aiolocaria hexaspilota* (Hope) (X ca. 6)
3. *Halizia sedecim-guttata* (Linnaeus) (X ca. 10)
4. *Epilachna chinensis tsushimana* (Nakane et M. Araki) (X ca. 10)



1.



4.



2.



3.

Plate XVI

- | | |
|--|----------|
| 1. <i>Eocaria parvinotata</i> Miyatake (paratype) | (X ca.7) |
| 2. <i>Eocaria muiri</i> Timberlake | (X ca.7) |
| 3. <i>Anisocalvia quindecimguttata</i> (Fabricius) | (X ca.7) |
| 4. <i>Anisocalvia quatuordecimguttata</i> (Linnaeus) | (X ca.7) |
| 5. <i>Anisocalvia duodecimmaculata yuasai</i> (Nakane) | (X ca.7) |
| 6. <i>Micraspis discolor</i> (Fabricius) | (X ca.7) |
| 7. <i>Micraspis kiotoensis</i> (Nakane et M. Araki) | (X ca.7) |
| 8. <i>Phrynocaria congener</i> (Billberg) | (X ca.7) |
| 9. <i>Coccinella hasegawai</i> Miyatake | (X ca.7) |
| 10. <i>Coccinella explanata</i> Miyatake | (X ca.7) |
| 11. <i>Coccinella ainu</i> Lewis | (X ca.7) |
| 12. <i>Henosepilachna boisduvali</i> (Mulsant) | (X ca.5) |
| 13. <i>Epilachna admirabilis</i> Crotch | (X ca.5) |
| 14. <i>Henosepilachna vigintioctopunctata</i> (Fabricius) | (X ca.5) |
| 15. <i>Henosepilachna vigintioctomaculata</i> (Motschulsky), C-group | (X ca.5) |
| 16. <i>Henosepilachna vigintioctomaculata</i> (Motschulsky), A-group | (X ca.5) |

