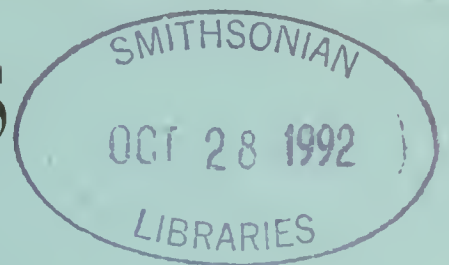


PROCEEDINGS

of the

ENTOMOLOGICAL SOCIETY
of WASHINGTONPUBLISHED
QUARTERLY

CONTENTS

- BALL, GEORGE E. and DANNY SHPELEY—*Onypterygia donato*, a new species from Costa Rica (Coleoptera: Carabidae: Platynini) 403
- BLAHNIK, ROGER J. and RALPH W. HOLZENTHAL—New species of *Chimarra* subgenus *Chimarra* Stephens from Costa Rica (Trichoptera: Philopotamidae) 409
- BUENO-SORIA, JOAQUÍN and SILVIA SANTIAGO-FRAGOSO—Studies in aquatic insects. XI: Seven new species of the genus *Ochrotrichia* (*Ochrotrichia*) from South America (Trichoptera: Hydroptilidae) 439
- ČURČIĆ, BOŽIDAR P. M.—A new species of *Roncus* L. Koch, 1873, from southeastern Europe (Pseudoscorpiones: Neobisiidae) 447
- HARRIS, S. C. and L. J. DAVENPORT—New species of microcaddisflies from the Amazon Region, with especial reference to northeastern Peru (Trichoptera: Hydroptilidae) 454
- HEYDON, S. L. and Z. BOUČEK—Taxonomic changes in Nearctic Pteromalidae, with the description of some new taxa (Hymenoptera: Chalcidoidea) 471
- HOLZENTHAL, RALPH W. and R. MALCOM STRAND—New species of *Lepidostoma* from Mexico and Central America (Trichoptera: Lepidostomatidae) 490
- LIU, ZHIWEI and GÖRAN NORDLANDER—*Ibaliid* parasitoids of siricid woodwasps in North America: Two new *Ibalia* species and a key to species (Hymenoptera: Cynipoidea) 500
- MALDONADO CAPRILES, J. and J. A. SANTIAGO-BLAY—A new species of the Neotropical genus *Sphaeridops* Amyot & Serville, 1843 (Sphaeridopinae: Reduviidae) 508
- MILLER, DOUGLASS R., TONG-XIAN LIU, and JAMES O. HOWELL—A new species of *Acanthococcus* (Homoptera: Coccoidea; Eriococcidae) from sundew (*Drosera*) with a key to the instars of *Acanthococcus* 512
- NICKLE, DAVID A.—*Scapteriscus borellii* Giglio-Tos: The correct species name for the southern mole cricket in southeastern United States (Orthoptera: Gryllotalpidae) 524
- NORRBOM, ALLEN L.—A revision of the Nearctic genus *Gymnocarena* Hering (Diptera: Tephritidae) 527

(Continued on back cover)

THE
ENTOMOLOGICAL SOCIETY
OF WASHINGTON

ORGANIZED MARCH 12, 1884

OFFICERS FOR 1992

WAYNE N. MATHIS, *President*
RUSSELL D. STEWART, *President-Elect*
M. ALMA SOLIS, *Recording Secretary*
HOLLIS B. WILLIAMS, *Corresponding Secretary*
NATALIA J. VANDENBERG, *Custodian*

NORMAN E. WOODLEY, *Treasurer*
CHRISTOPHER H. DIETRICH, *Program Chairman*
RALPH P. ECKERLIN, *Membership Chairman*
DAVID R. SMITH, *Past President*

THOMAS J. HENRY, *Editor*
GARY L. MILLER, *Book Review Editor*

Publications Committee

DONALD R. DAVIS TERRY L. ERWIN F. CHRISTIAN THOMPSON
A. G. WHEELER, JR.

Honorary President
CURTIS W. SABROSKY

Honorary Members

LOUISE M. RUSSELL ALAN STONE THEODORE L. BISSELL

All correspondence concerning Society business should be mailed to the appropriate officer at the following address: Entomological Society of Washington, % Department of Entomology, NHB 168, Smithsonian Institution, Washington, D.C. 20560.

MEETINGS.—Regular meetings of the Society are held in the Natural History Building, Smithsonian Institution, on the first Thursday of each month from October to June, inclusive, at 8 P.M. Minutes of meetings are published regularly in the *Proceedings*.

MEMBERSHIP.—Members shall be persons who have demonstrated interest in the science of entomology. Annual dues for members are \$25.00 (U.S. currency).

PROCEEDINGS.—The *Proceedings of the Entomological Society of Washington* (ISSN 0013-8797) are published quarterly beginning in January by The Entomological Society of Washington. POSTMASTER: Send address changes to the Entomological Society of Washington, % Department of Entomology, NHB-168, Smithsonian Institution, Washington, D.C. 20560. Members in good standing receive the *Proceedings* of the Entomological Society of Washington. Nonmember subscriptions are \$50.00 per year, domestic, and \$60.00 per year, foreign (U.S. currency), payable in advance. Foreign delivery cannot be guaranteed. All remittances should be made payable to *The Entomological Society of Washington*.

The Society does not exchange its publications for those of other societies.

PLEASE SEE P. 218 OF THE JANUARY, 1991 ISSUE FOR INFORMATION REGARDING PREPARATION OF MANUSCRIPTS.

STATEMENT OF OWNERSHIP

Title of Publication: *Proceedings of the Entomological Society of Washington*.

Frequency of Issue: Quarterly (January, April, July, October).

Location of Office of Publication, Business Office of Publisher and Owner: The Entomological Society of Washington, % Department of Entomology, Smithsonian Institution, 10th and Constitution NW, Washington, D.C. 20560.

Editor: Thomas J. Henry, Systematic Entomology Laboratory, ARS, % Department of Entomology, Smithsonian Institution, 10th and Constitution NW, Washington, D.C. 20560.

Books for Review: Gary L. Miller, Systematic Entomology Laboratory, ARS, Building 046, BARC-West, Beltsville, MD 20705.

Managing Editor and Known Bondholders or other Security Holders: none.

This issue was mailed 19 October 1992

Second Class Postage Paid at Washington, D.C. and additional mailing office.

PRINTED BY ALLEN PRESS, INC., LAWRENCE, KANSAS 66044, USA

THIS PUBLICATION IS PRINTED ON ACID-FREE PAPER.

NOTE

Pollen and Nectar Feeding by *Chilocorus kuwanae* (Silvestri)
(Coleoptera: Coccinellidae)

Predaceous coccinellids are known to have a wide variety of accepted food. Even explicitly carnivorous lady beetles will supplement their diet with pollen and nectar from flowers and extrafloral nectaries (Hagen, 1962. Annual Review of Entomology 7: 289-326; Hodek, 1973. Biology of Coccinellidae. Junk, The Hague). There has, however, been relatively little work on the dietary habits of coccinellids that prey on scales of the family Diaspididae (Drea and Gordon, 1990. In The Armoured Scale Insects, Their Biology, Natural Enemies and Control. Vol. B. Elsevier, Amsterdam, pp. 19-40). This is a report on observations of adults of the imported diaspidid predator *Chilocorus kuwanae* (Silvestri) feeding on nectar and pollen of the host plant (*Euonymus* sp.) of one of its prey, the euonymus scale, *Unaspis euonymi* (Comstock) (Homoptera: Diaspididae).

Between April and September 1990, the Korean strain of *C. kuwanae* was released ($n = 764$) at a commercial location in Raleigh, N.C.; the site consisted of a low hedge (approx. 1 m) comprised of 8 bushes of *Euonymus japonicus aureo-variegatus* ("Gold Spot") severely infested with euonymus scale. On the morning of 4 June 1991, adult *C. kuwanae* ($n = 27$ by casual count) were observed on the flowers of these shrubs. The observed adults were the first generation of the year (matured from eggs produced by overwintering adults). Pupae and adults were the most abundant stages of *C. kuwanae* at the site, although a few late-instar larvae were also present. The bushes were largely free of live scale at the time of the observation.

On 6 June 1991 more detailed behavioral observations were conducted at the same site. We noted that adult *C. kuwanae* on

flowers had their mouthparts in contact with the base of the ovary (Fig. 1). Because ants and honeybees were also observed in a similar position on the flowers, it is presumed that all these insects were feeding on floral nectar; floral nectaries in the family Celastraceae occur between the stamens and the ovary (Esau, 1965. Plant Anatomy. John Wiley & Sons, N.Y.). Adult *C. kuwanae* were observed similarly oriented on flowerheads of *Euonymus kiautschovicus* ("Manhattan") at a second site in Raleigh on 9 July 1991.

Eleven adults (6 males, 5 females) were collected from the flowerheads (6 June 1991) and brought back to the laboratory where they were dissected and their stomach contents inspected with phase contrast at $40\times$. All insects were positive for the presence of pollen in the gut. The prolate-spheroidal shape and the surface pattern of the pollen observed in the gut contents were consistent with that of published pictures of euonymus pollen (Lewis et al. 1983. Airborne and Allergenic Pollen of North America. The Johns Hopkins University Press, Baltimore), and with euonymus pollen collected from anthers and observed with a phase contrast microscope. Although thrips (*Frankliniella triticae* (Fitch)) were present on flowerheads at the site, no insect parts were obvious in the gut contents of the dissected coccinellids.

The reported observation of pollen and nectar feeding in *C. kuwanae* indicates that, when prey is scarce, this predator can supplement its diet with food of plant origin. Although nectar may be a source of energy for adults, it is probably nutritionally insufficient for egg or fat production (Hagen 1962). Pollen, however, is rich in protein (Levin and Haydak, 1958. Proceedings of the 10th International Congress of Ento-

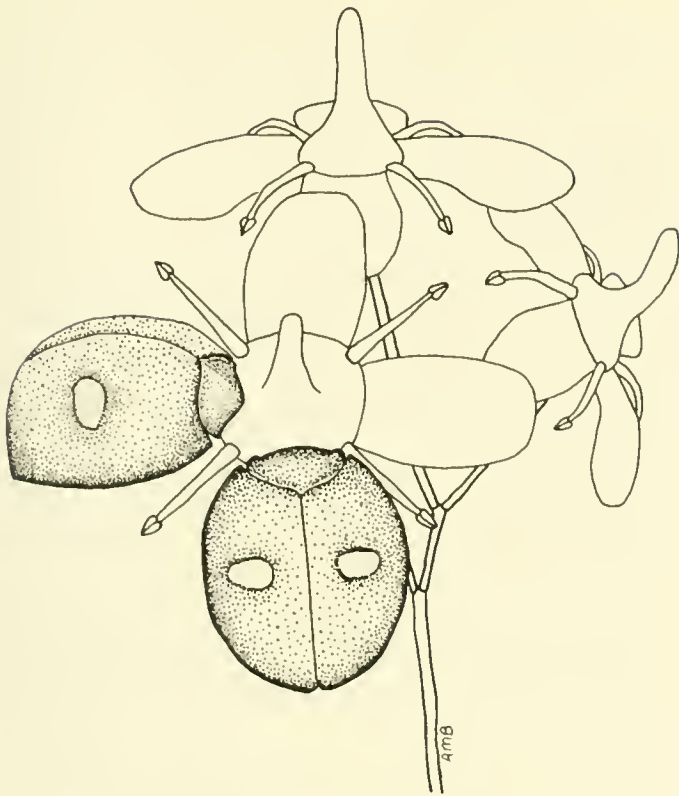


Fig. 1. Adults of *Chilocorus kuwanae* feeding at floral nectaries of *Euonymus* sp. Drawn from a photograph.

mology 4: 1079–1084), and may support oögenesis in the females. Unfortunately, we did not note the condition of ovaries in dissected females; the observed nectivory probably occurred during the pre-oviposition period of the newly emerged adults.

There is currently an extensive program for the release and distribution of *C. kuwanae* in the United States (Drea and Carlson. 1987. Proceedings of the Entomological Society of Washington 89: 821–824; Hendrickson et al. 1991. Proceedings of the Entomological Society of Washington 93: 197–200). These lady beetles can be reared in large numbers on scale infested bushes in outdoor insectaries, or on scale reared on squash in the laboratory (Tanaka and Kobayashi. 1970. Proceedings. Association for

Plant Protection of Kyushu 16: 56–59; J. J. Drea, pers. comm.). Because of the need to synchronize the supply of scales to the needs of the beetles, however, periods of food shortage are a common problem in rearing these insects for biocontrol programs.

C. kuwanae has a wide host range within the Diaspididae and maintains itself on rotational prey over the course of the year (Kato. 1968. Kontyu 36: 29–38). Because of the reported observations, and because the ability to maintain a species of coccinellid on artificial diet may be related to broadness of host range (Hussein and Hagen. 1991. Entomologia Experimentalis et Applicata 59: 197–199), it may be possible to formulate a non-scale diet for laboratory maintenance or mass rearing of *C. kuwanae*. Artificial diet was a valuable alternative to natural prey for maintaining *C. nigritus* (Fabr.) adults. Artificial diets were, however, suboptimal for larval development and the maintenance of adults in *C. bipustulatus* L. and *C. infernalis* Muls. (Hattingh. 1989. 7th International Congress of the Entomological Society of South Africa, pp. 15–16).

We thank David L. Stephan (Entomology Department, North Carolina State University) for identifying the thrips, and John W. Scott (Plant Protection, North Carolina Department of Agriculture) for identifying the plants.

Christine A. Nalepa, Stephen B. Bambara, and Anne M. Burroughs, (CAN, AMB) Biological Control Laboratory, North Carolina Department of Agriculture, P.O. Box 27647, Raleigh, North Carolina 27611; (SBB) Entomology Department, North Carolina State University, Raleigh, North Carolina 27695.