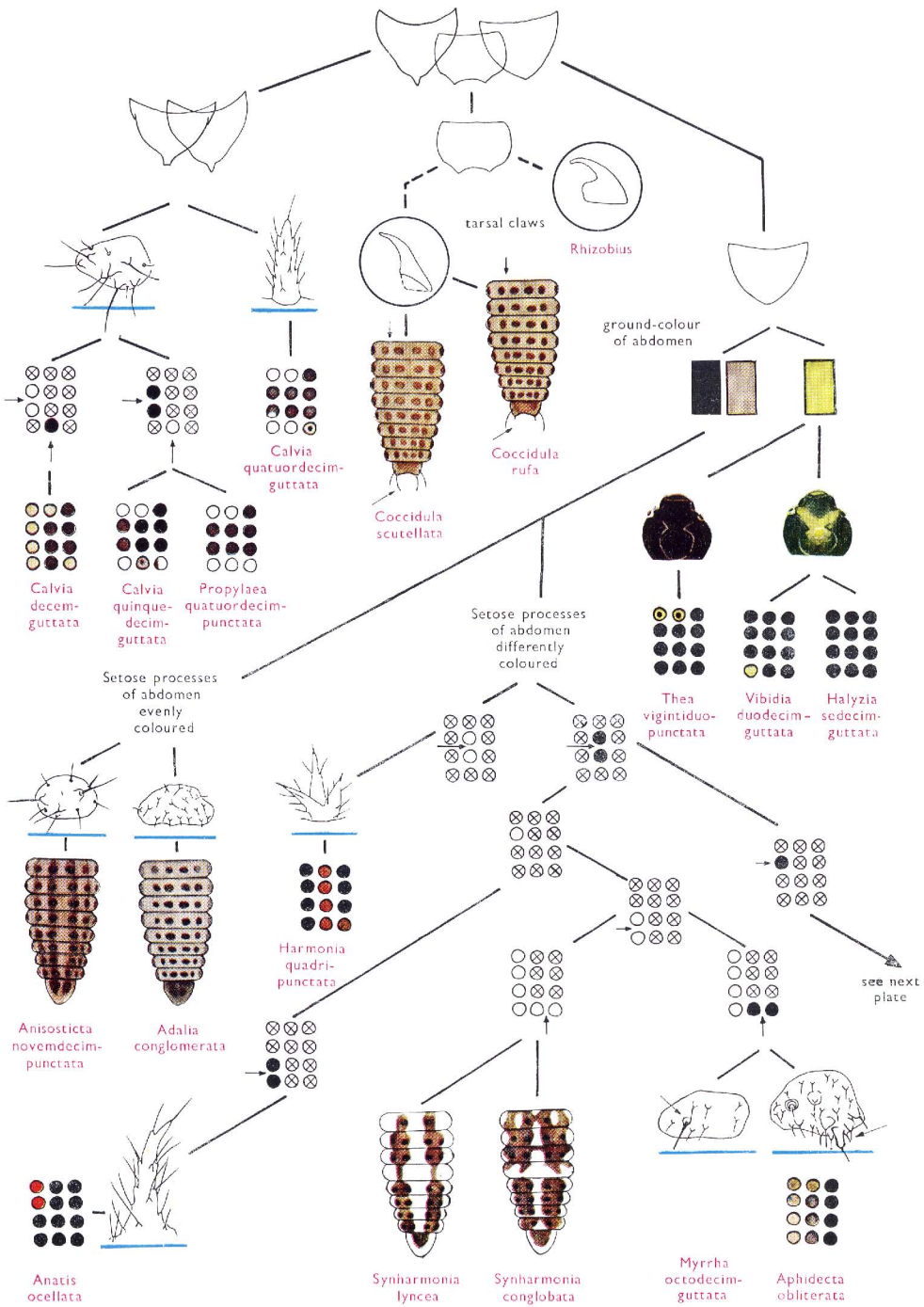
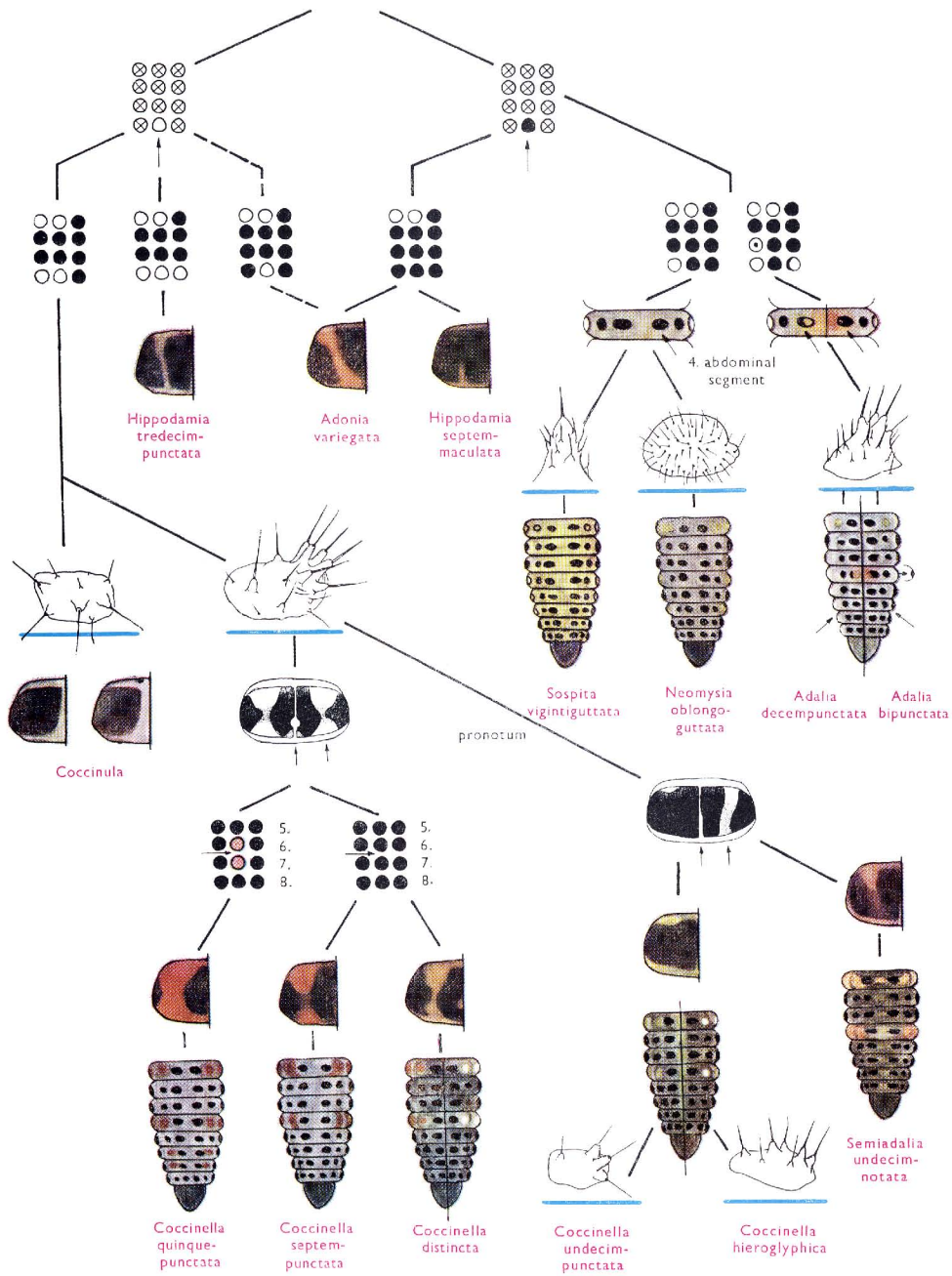
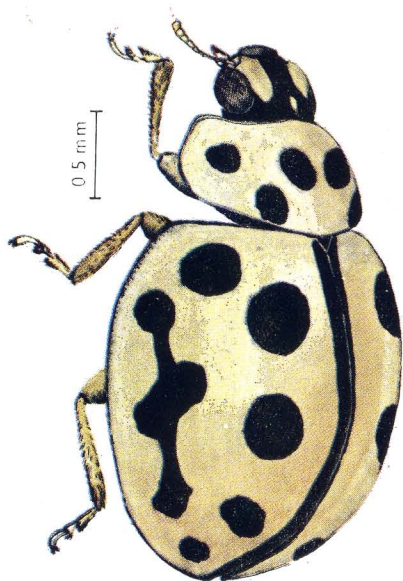


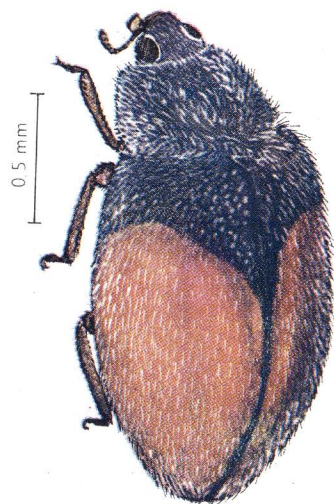
Plate XVII, Plate XVIII, Plate XIX
 Pictorial key for identification of 4th instar larvae of *Coccinellidae*.
 (Devised by B. Klausnitzer and I. Kovář, I. Kovář del.)



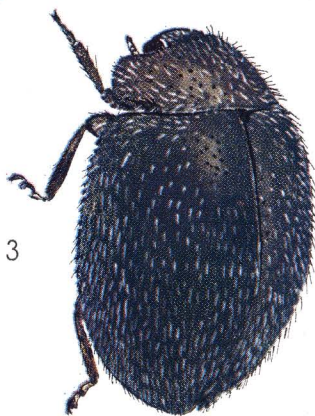




1



2

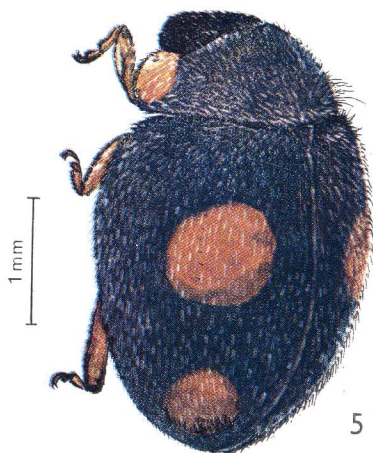


3

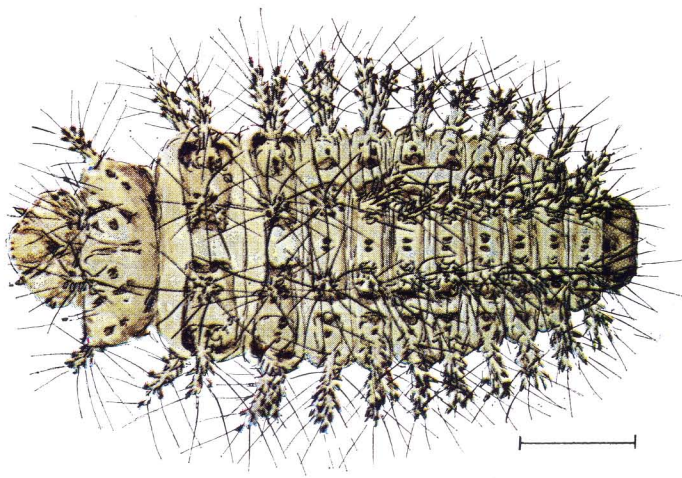
0.5 mm



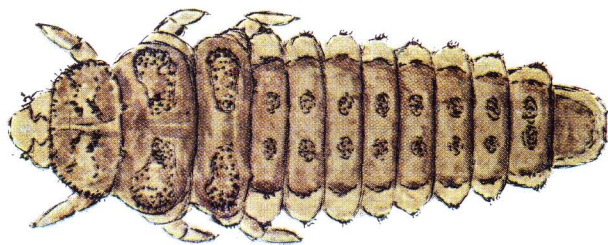
4



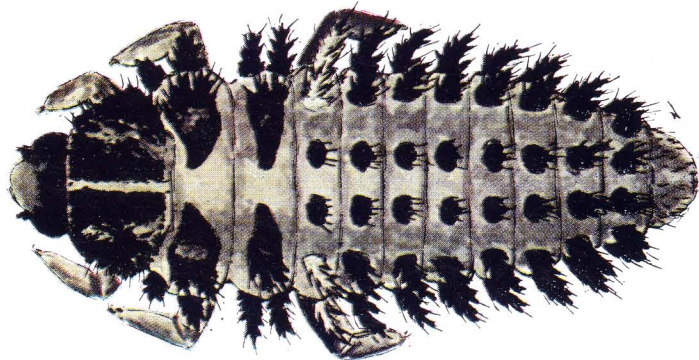
5



1

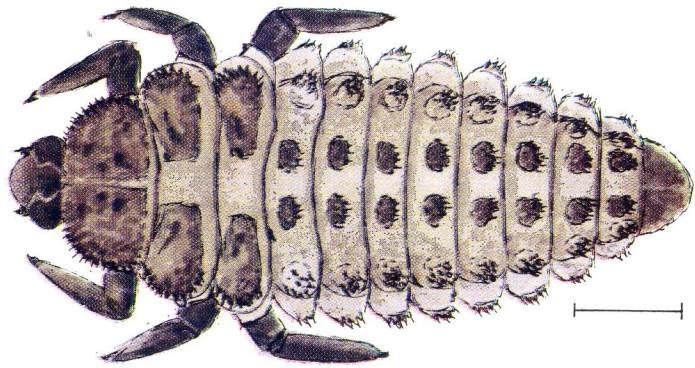


2

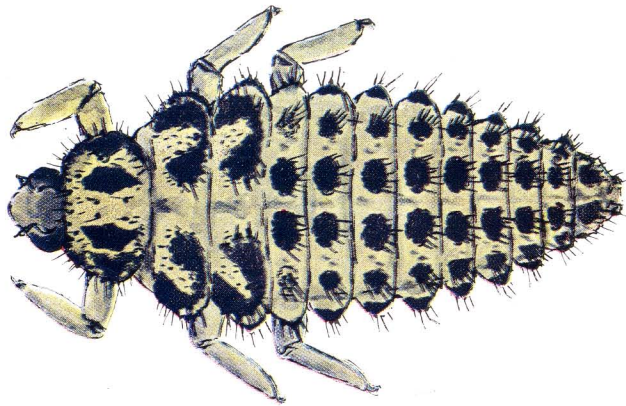


3

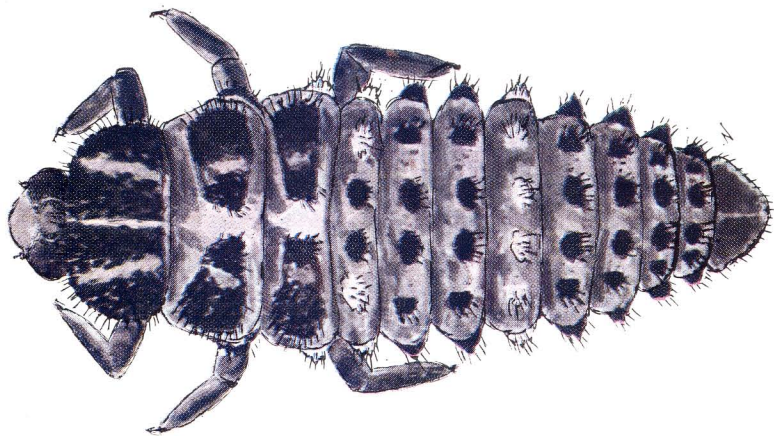
4th instar larvae. — 1 *Suboccinella quatuordecimpunctata*; 2 — *Corcidula rufa*; 3 — *Exochomus quadripustulatus*. (J. Zelený del.)
 (In the plates XXI—XXXIII, the length of the line represents 1 mm.)



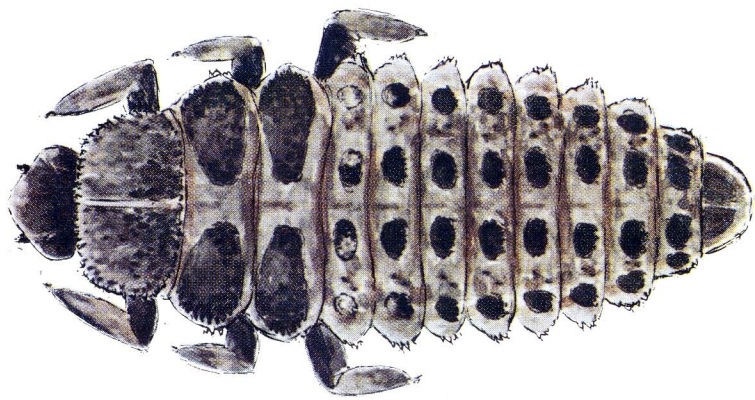
1



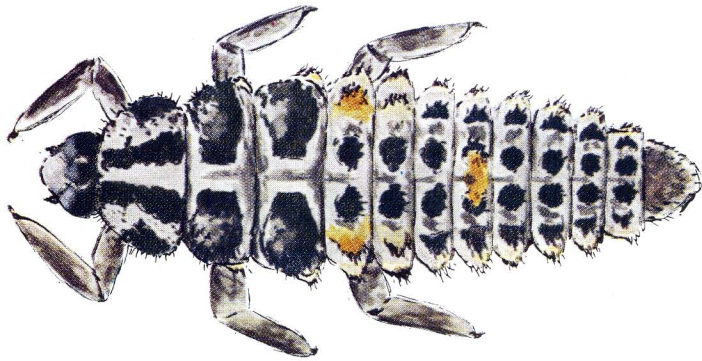
2



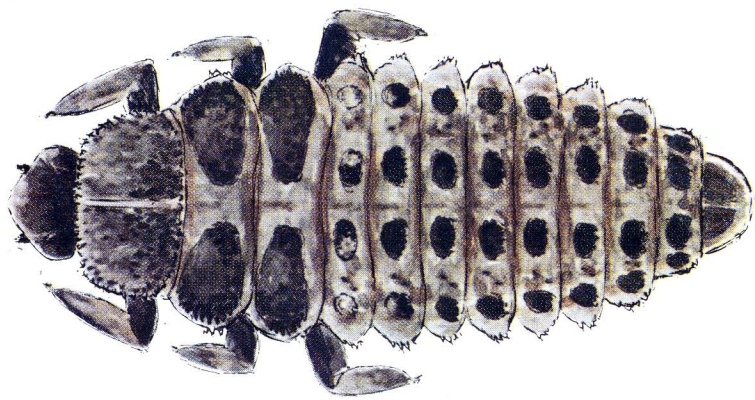
3



1

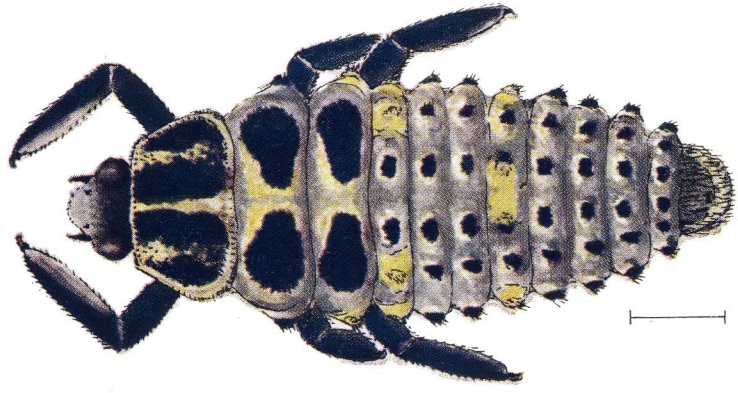


2

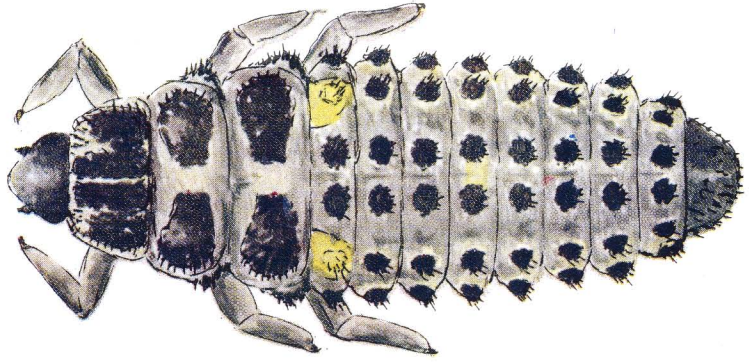


3

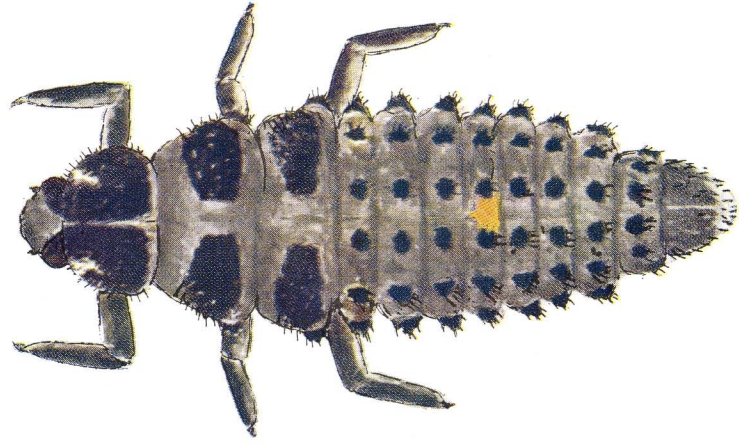
4th instar larvae. 1 — *Anisosticta novemdecimpunctata*; 2 — *Adalia decempunctata*; 3 — *Adalia conglomerata*. (J. Zelený del.)



1

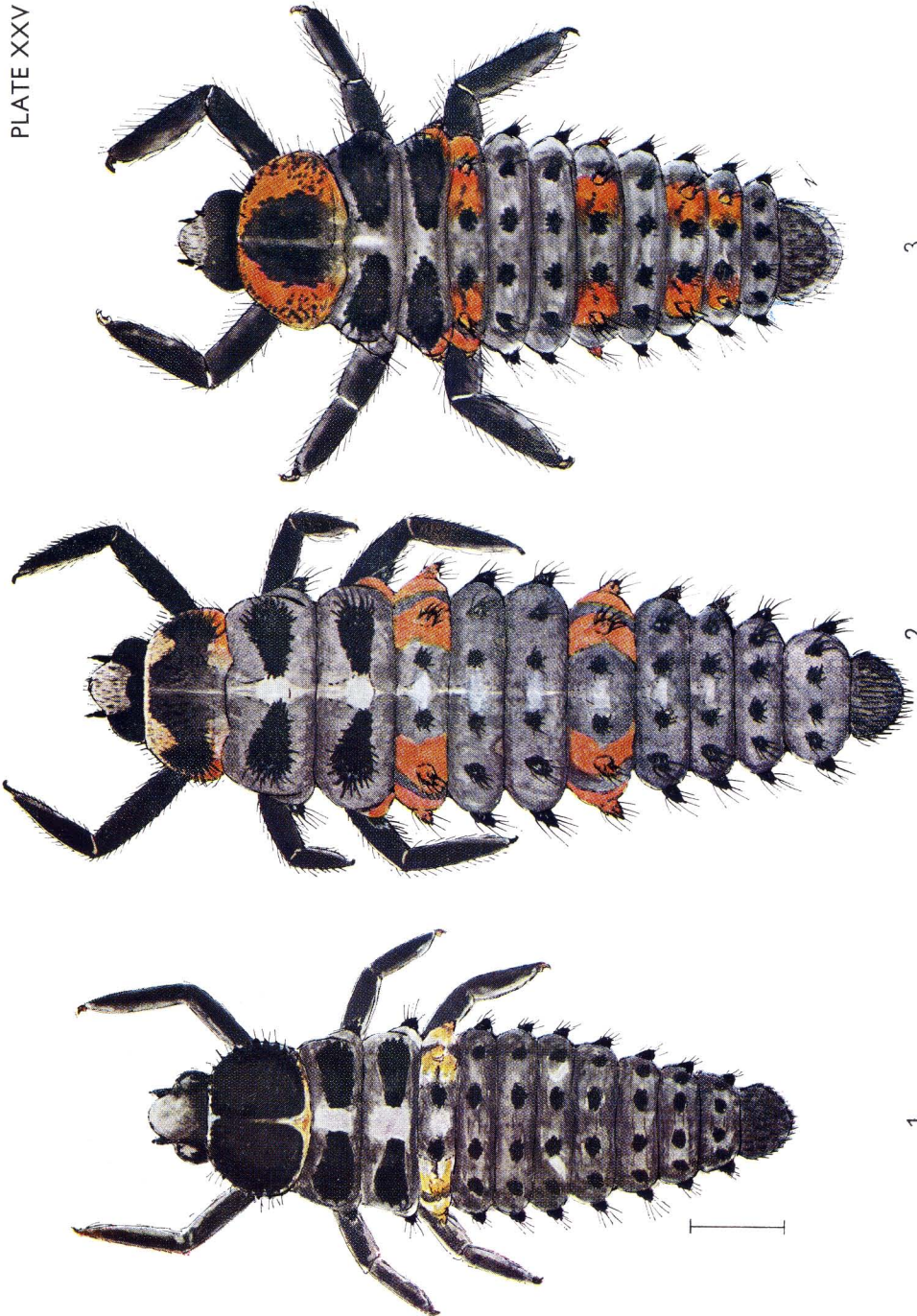


2



3

4th instar larvae. 1 — *Adalia bipunctata*; 2 — *Adalia bipunctata*; 3 — *Adalia bipunctata*. (J. Zelený del.)

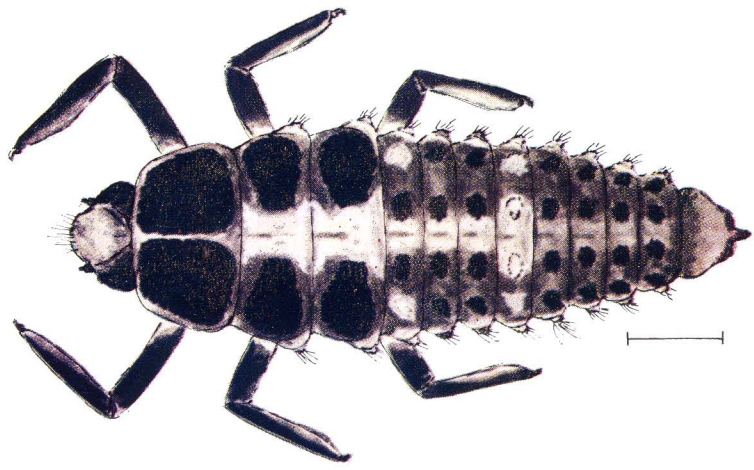


1

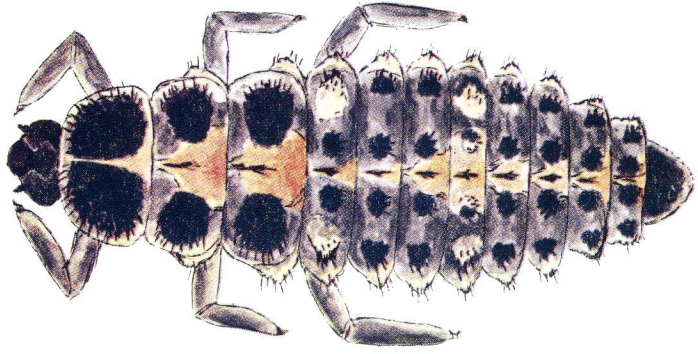
2

3

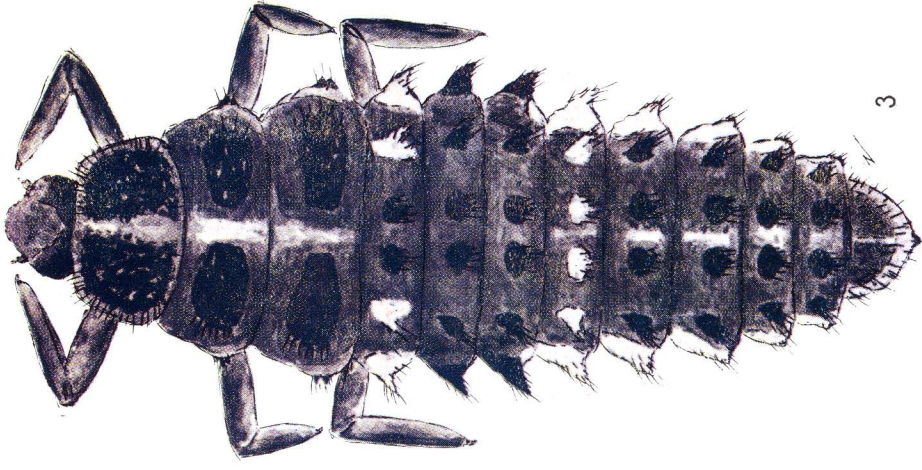
4th instar larvae. 1 — *Adonia variegata*; 2 — *Coccinella septempunctata*; 3 — *Coccinella quinquepunctata*. (J. Zelený del.)



1

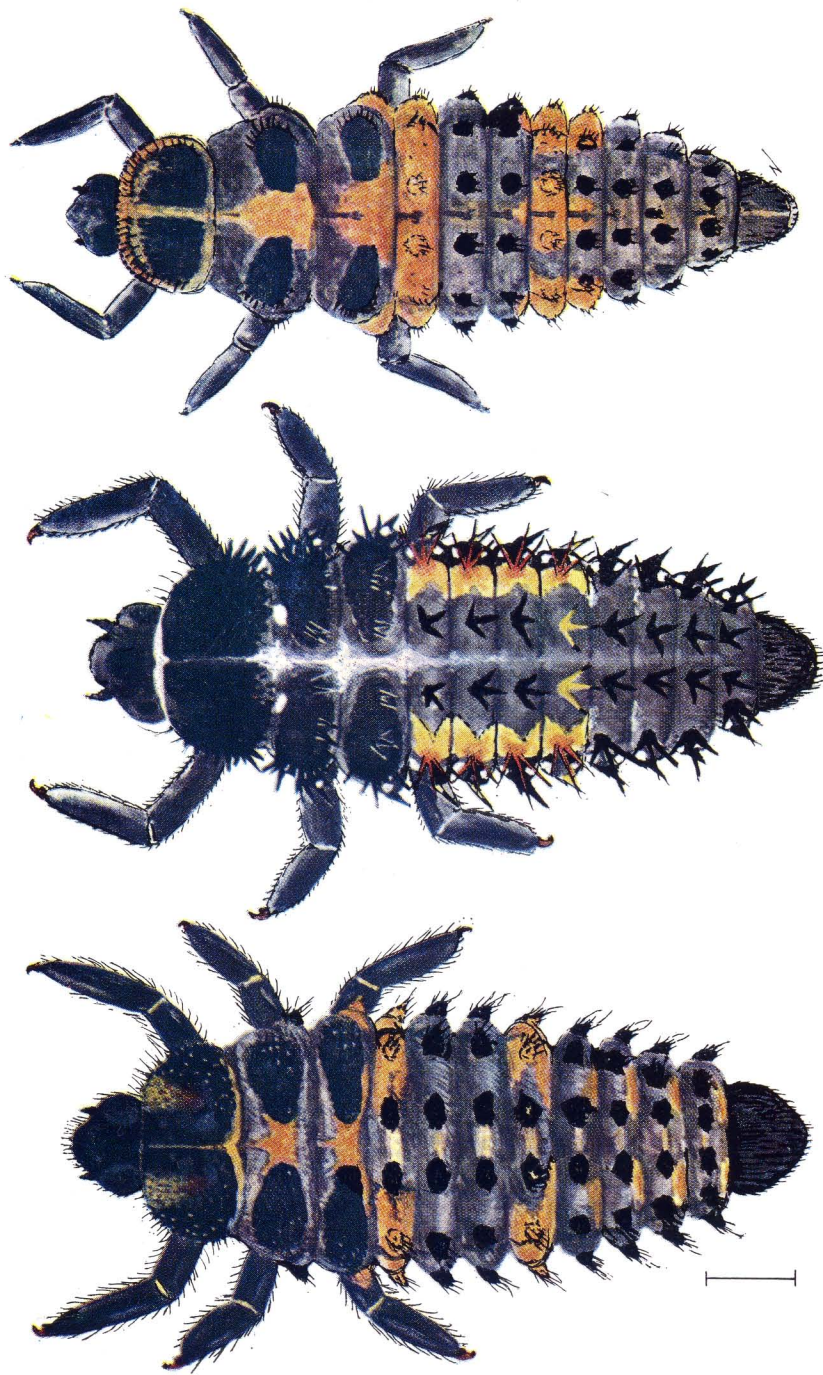


2



3

4th instar larvae. 1 — *Propylaea quatuordecimpunctata*; 2 — *Synharmonia conglobata*; 3 — *Calvia quatuordecimpunctata*. (J. Zelený del.)

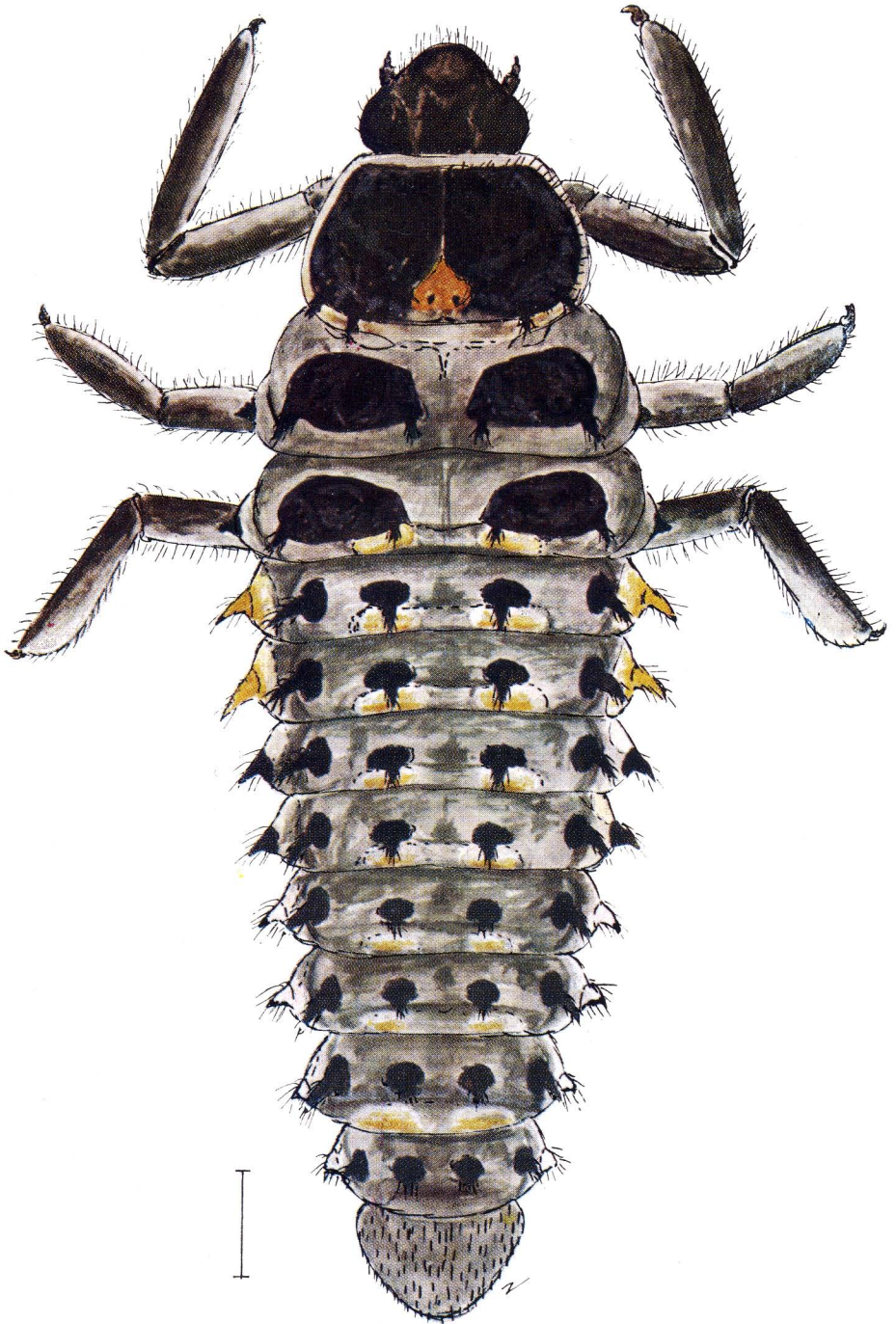


1

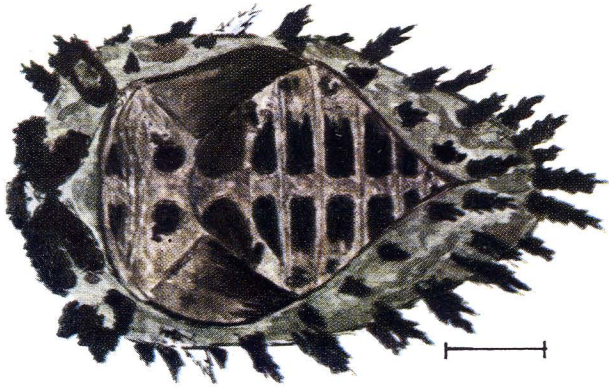
2

3

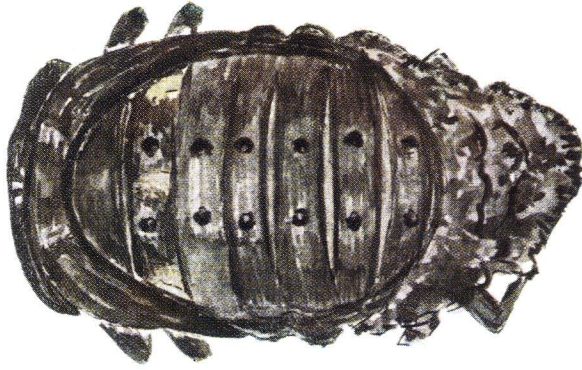
4th instar larvae. 1 — *Semiadalia undecimnotata*; 2 — *Harmonia quadripunctata*; 3 — *Cycloneda limbifer*. (J. Zelený del.)



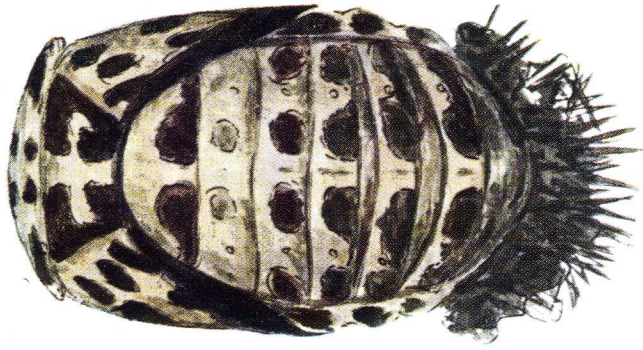
4th instar larva of *Anatis ocellata*. (J. Zelený del.)



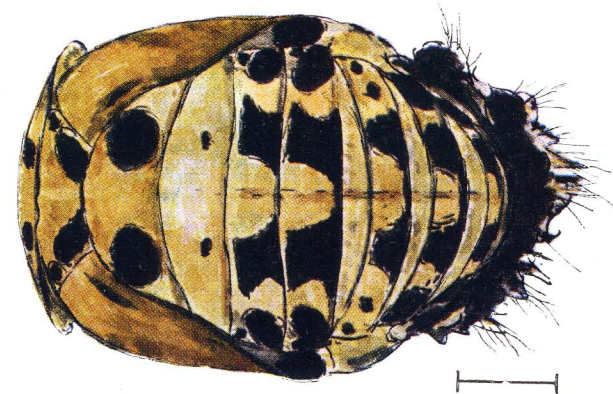
1



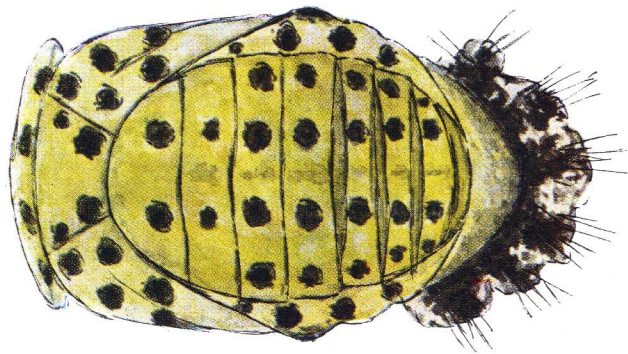
2



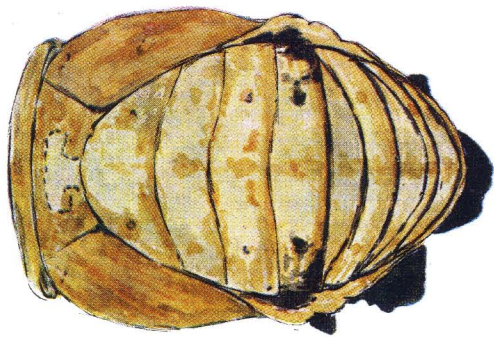
3



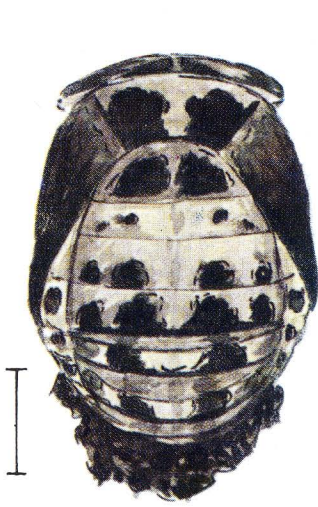
1



2



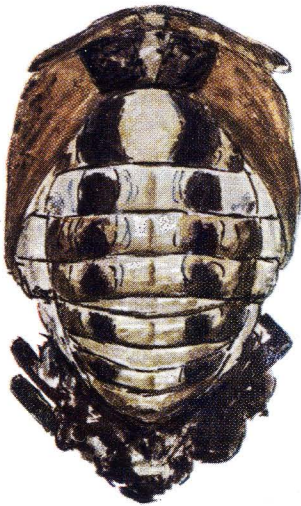
3



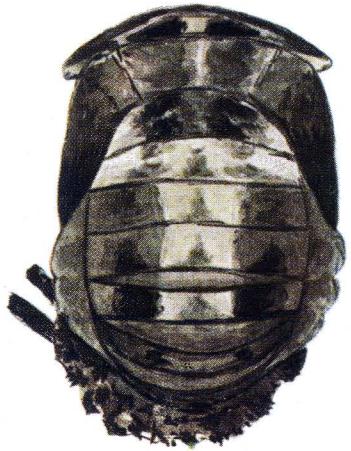
1



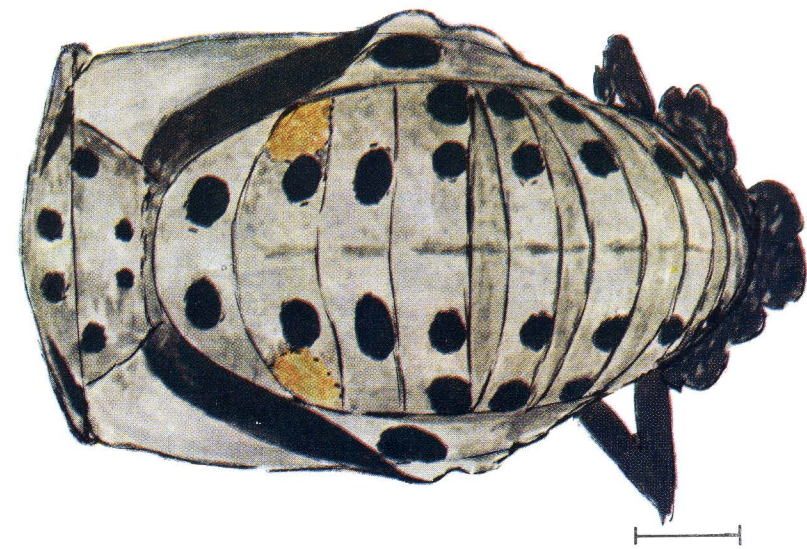
2



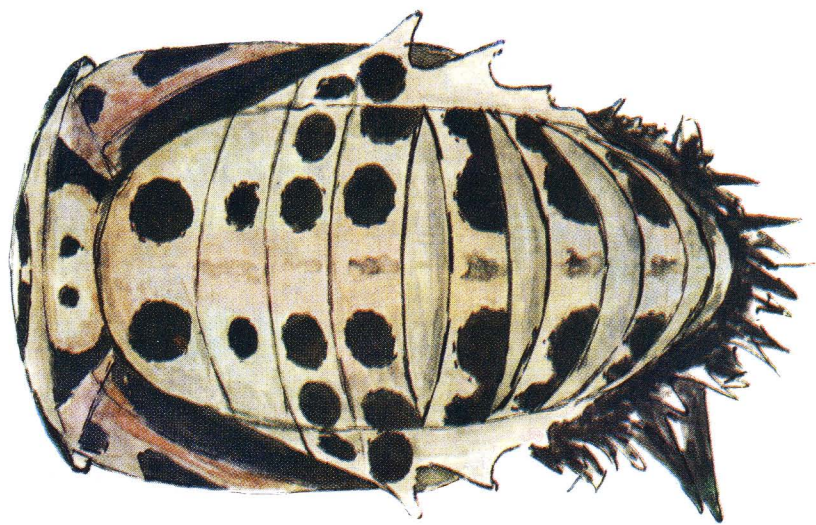
3



4

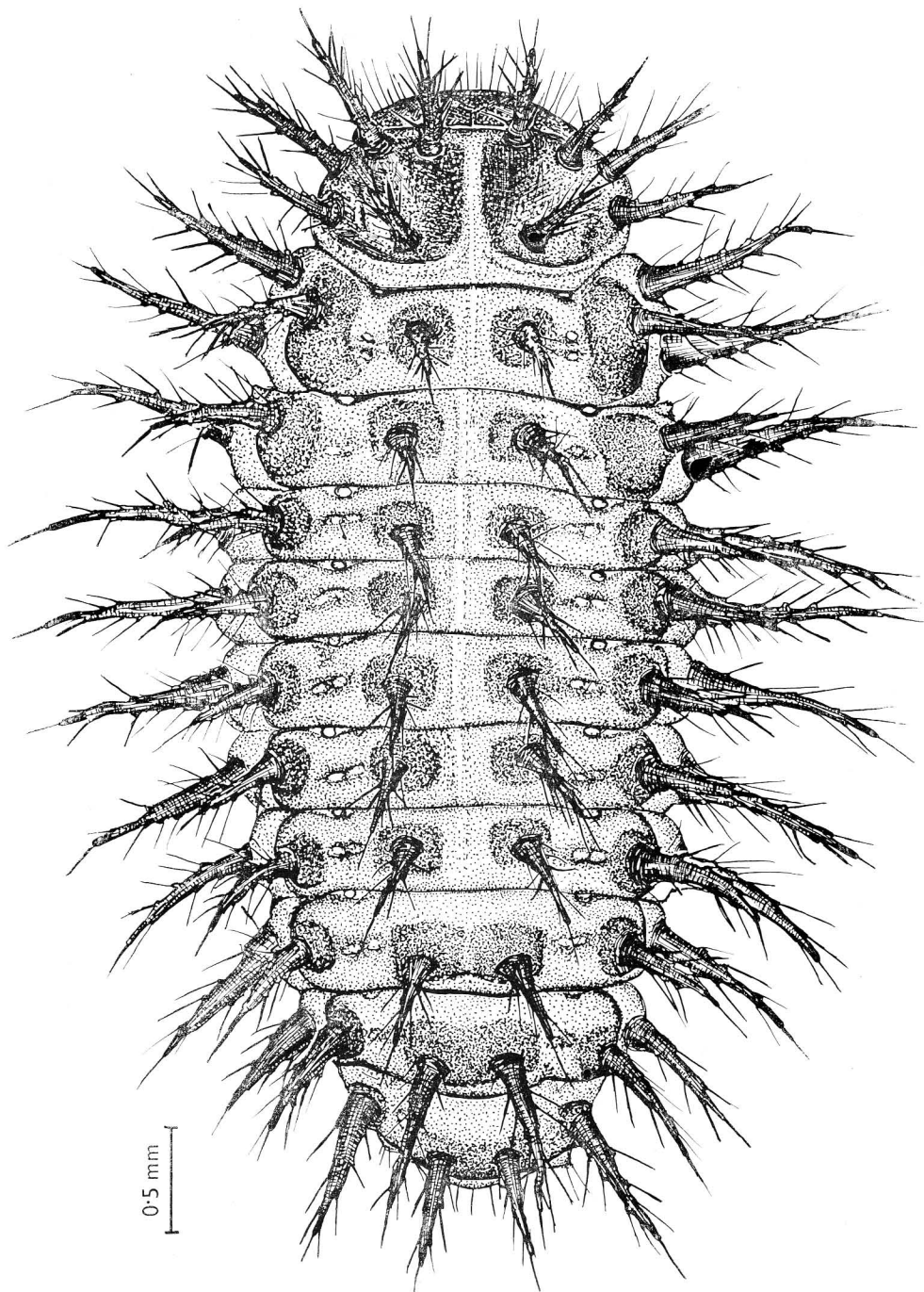


1

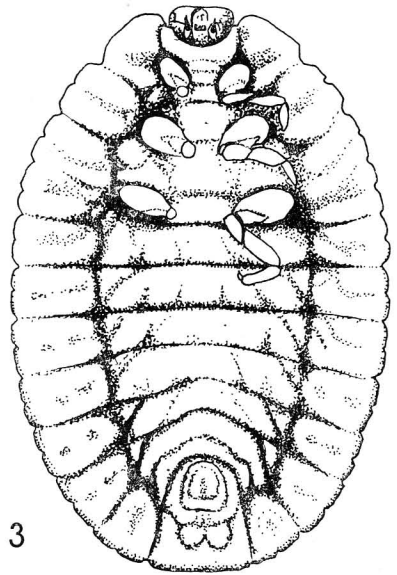
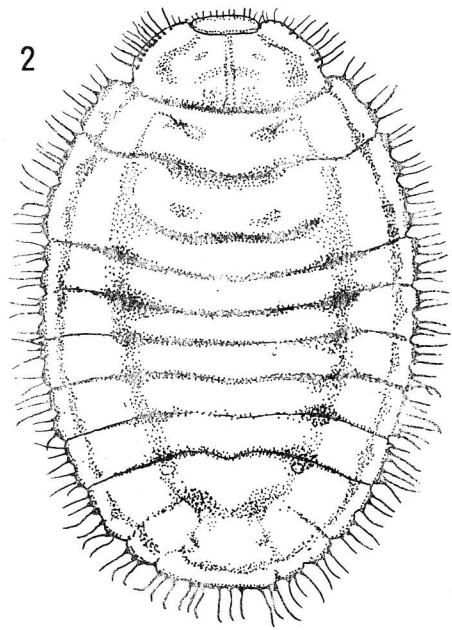
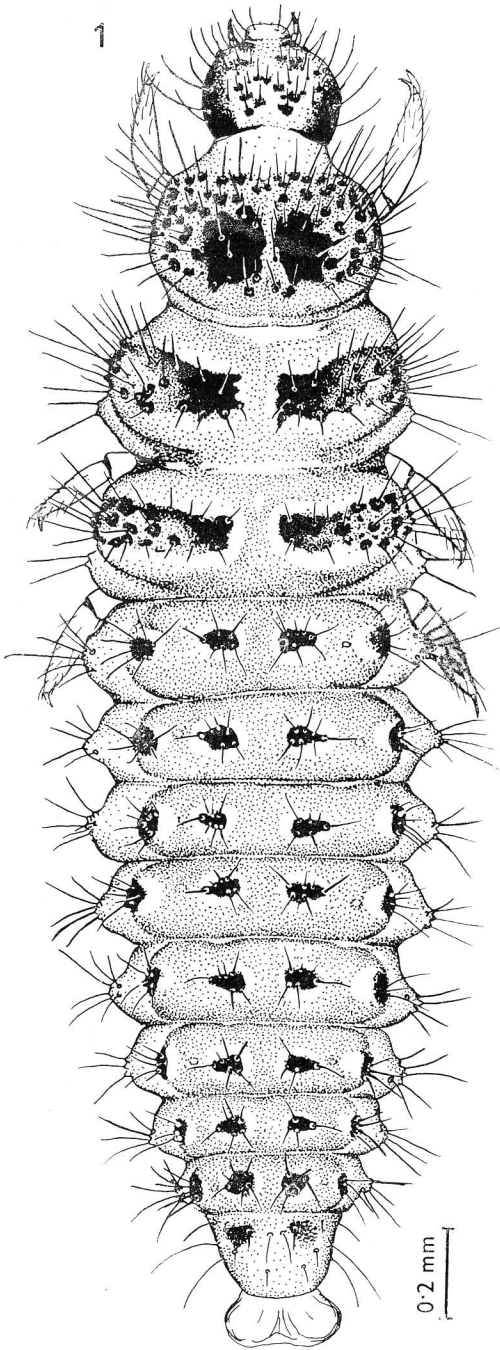


2

Pupae; 1 — *Neomysia oblongoguttata*; 2 — *Anatis ocellata*. (J. Zelený del.)



4th instar larva of *Chilocorus renipustulatus*. (I. Kovář del.)



1 — 4th instar of *Stethorus punctillum*; 2, 3 — larva of *Platynaspis luteorubra* (after Korschevsky 1934); 2 — upper side, 3 — lower side. (I. Kovář del.)