

FIG. 1. *Brumus octosignatus* (Gebler). In this figure and all subsequent figures the lettering is as follows: *A*—antenna, *B*—mandibles, *C*—maxilla, *D*—ligula, *E*—legs, *F*—claw, *G*—first abdominal sternite, *H*—aedeagus, *I*—siphus, *J*—sclerotized portions of female genitalia.

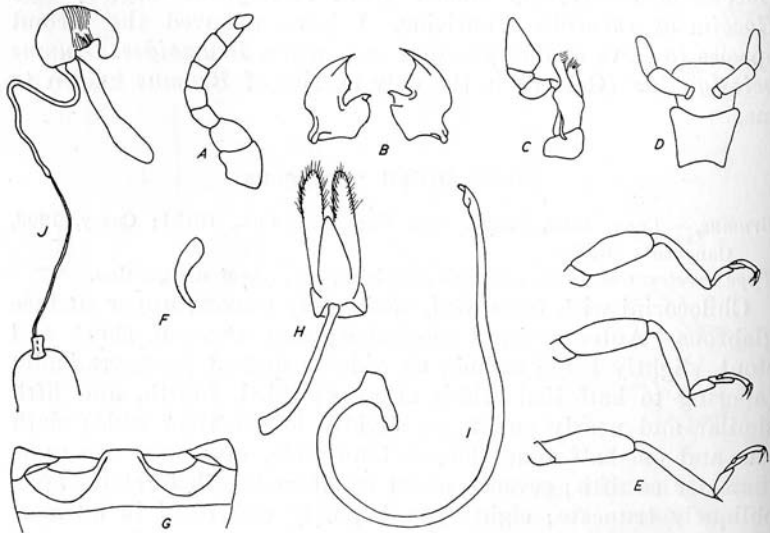


FIG. 2. *Brumoides suturalis* (Fabricius).

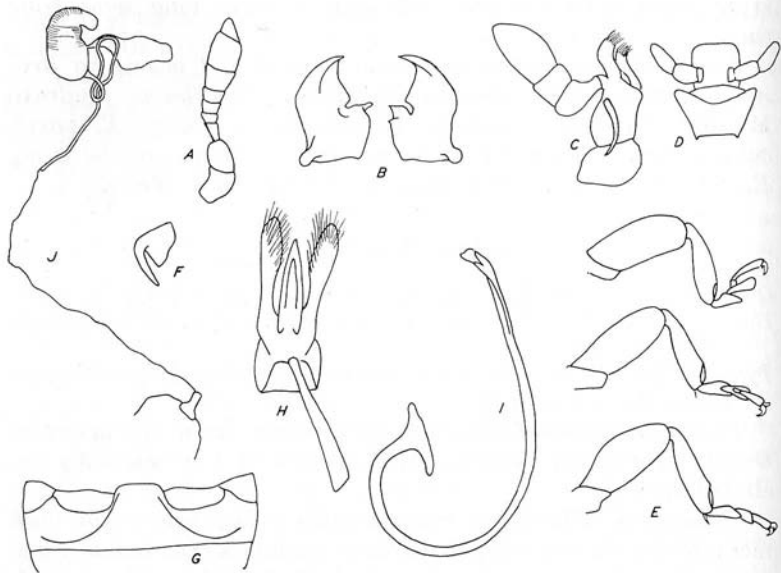


FIG. 3. *Harpasus zonatus* Mulsant.

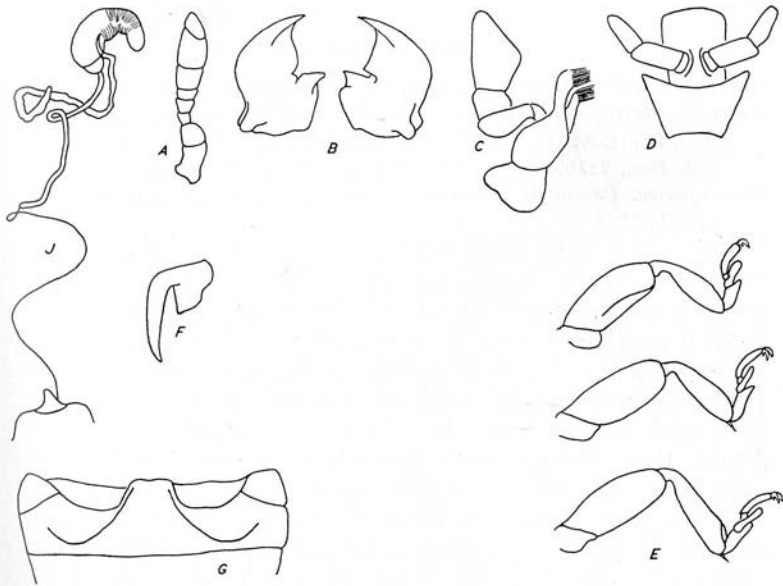


FIG. 4. *Zagreus bimaculosus* Mulsant.

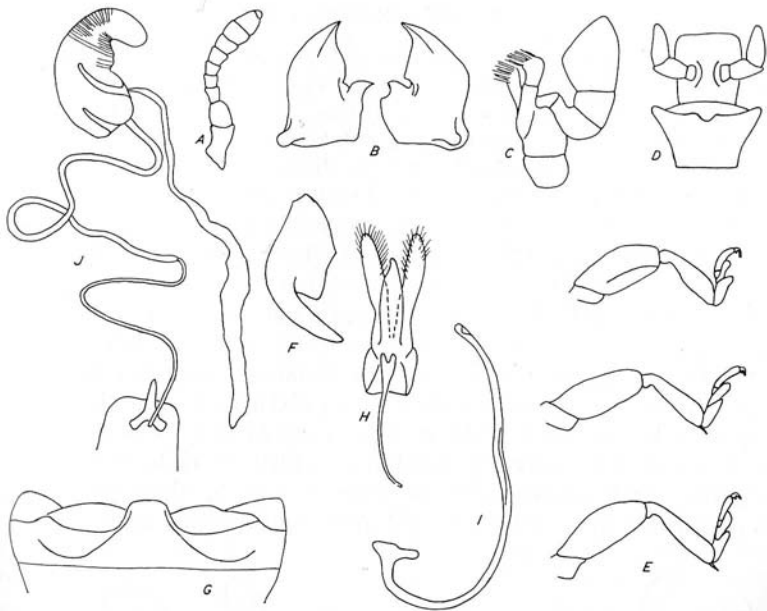


FIG. 5. *Axion tripustulatum* (DeGeer).

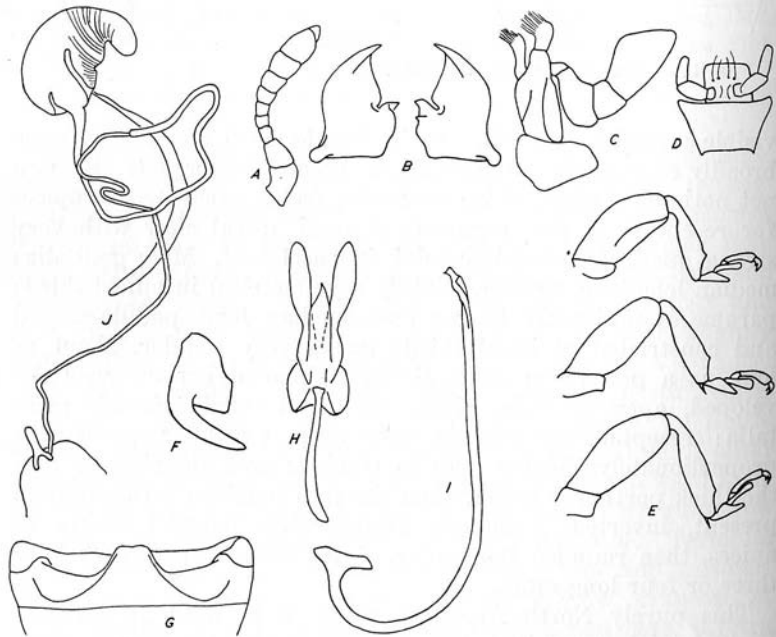


FIG. 6. *Curinus coeruleus* Mulsant.

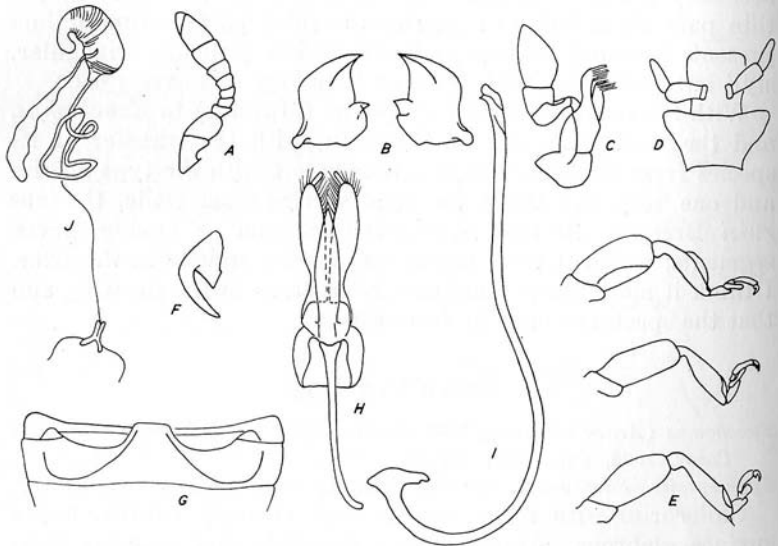


FIG. 7. *Arawana arizonica* (Casey).

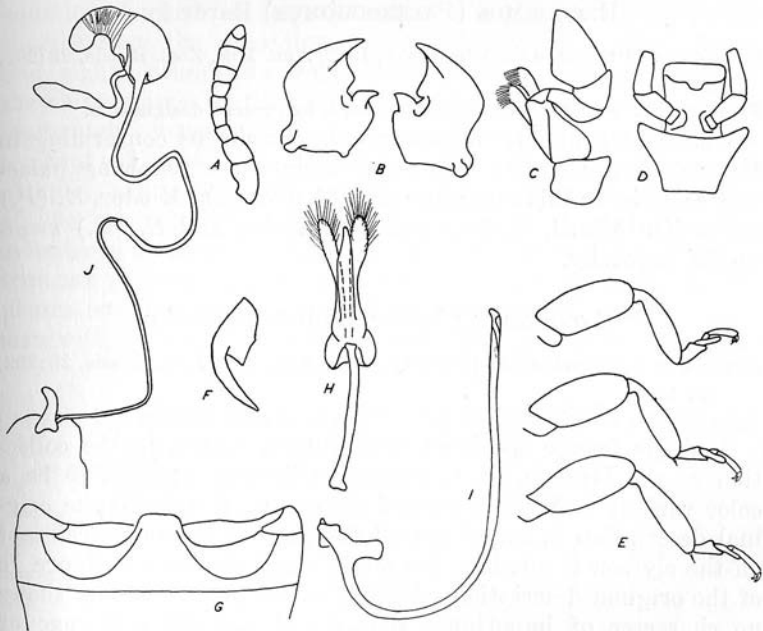


FIG. 8. *Exochomus quadripustulatus* (Linné).



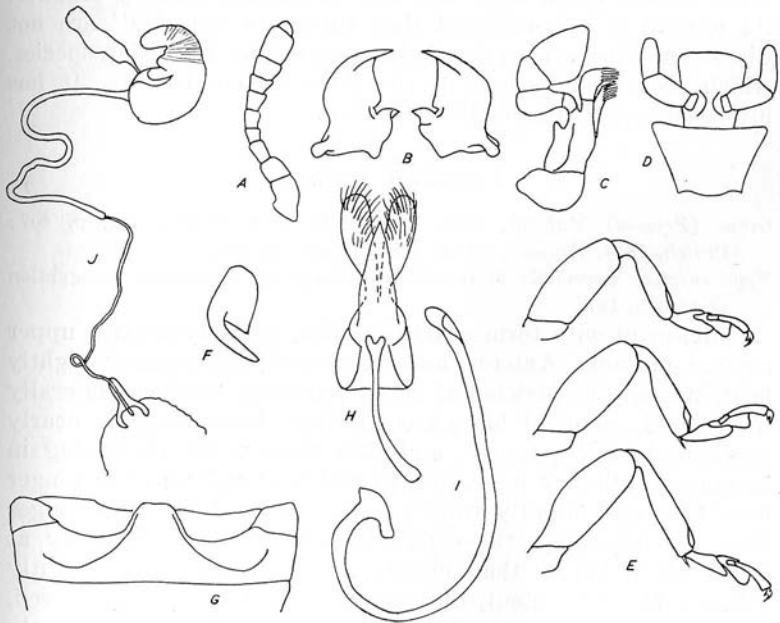


FIG. 9. *Cladis nitidula* (Fabricius).

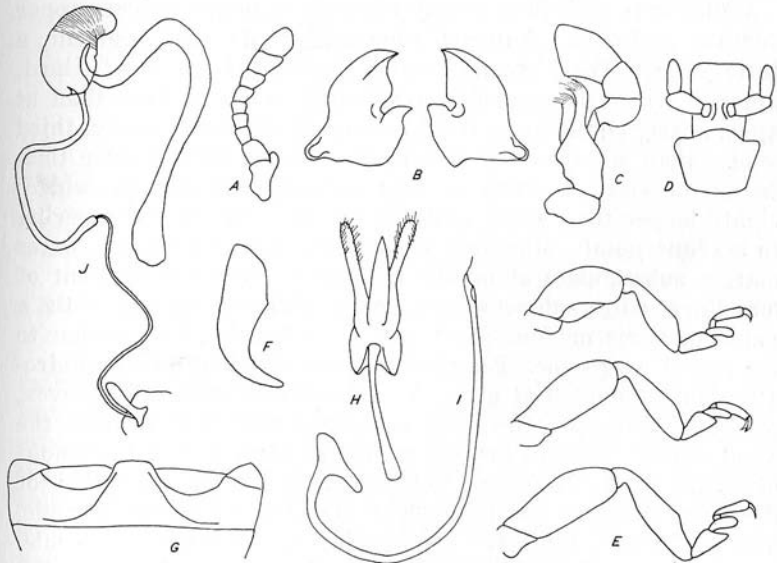


FIG. 10. *Priasus bilunulatus* (Boisduval).

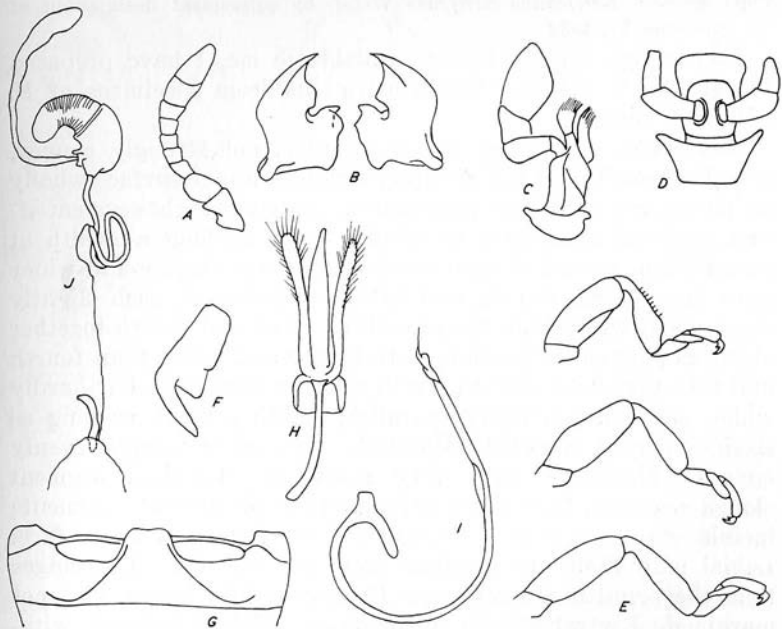


FIG. 11. *Paraprias australasiae* (Boisduval).

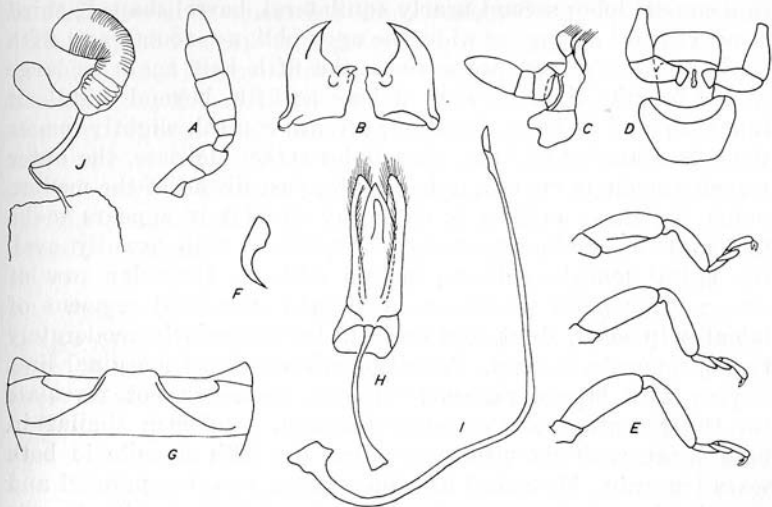


FIG. 12. *Endochilus plagiatus* Sicard.

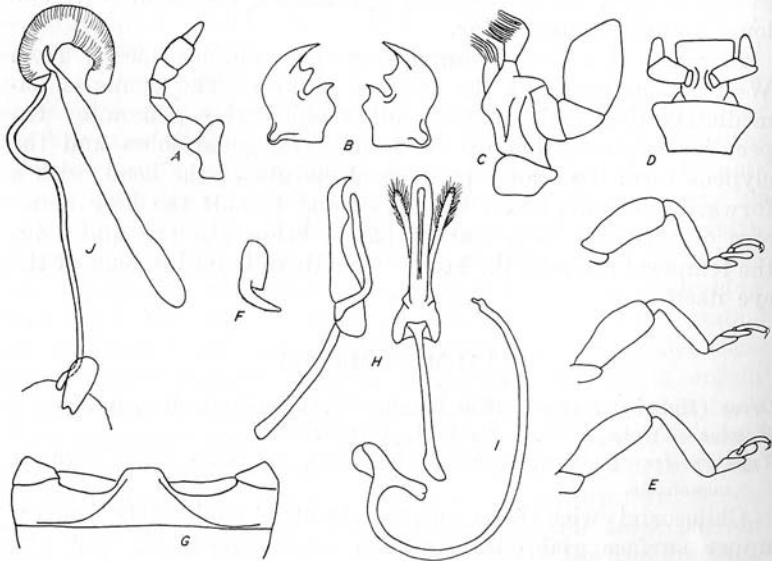


FIG. 13. *Halmus chalybeus* (Boisduval).

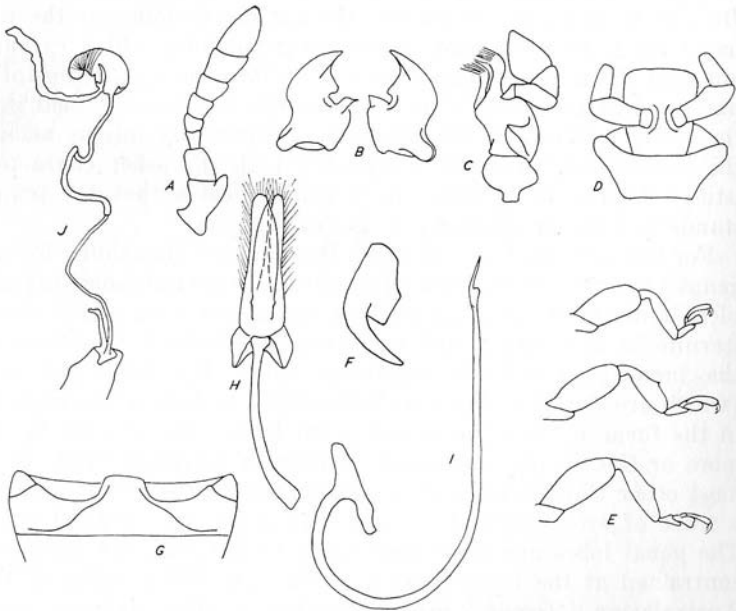


FIG. 14. *Orcus janthinus* Mulsant.

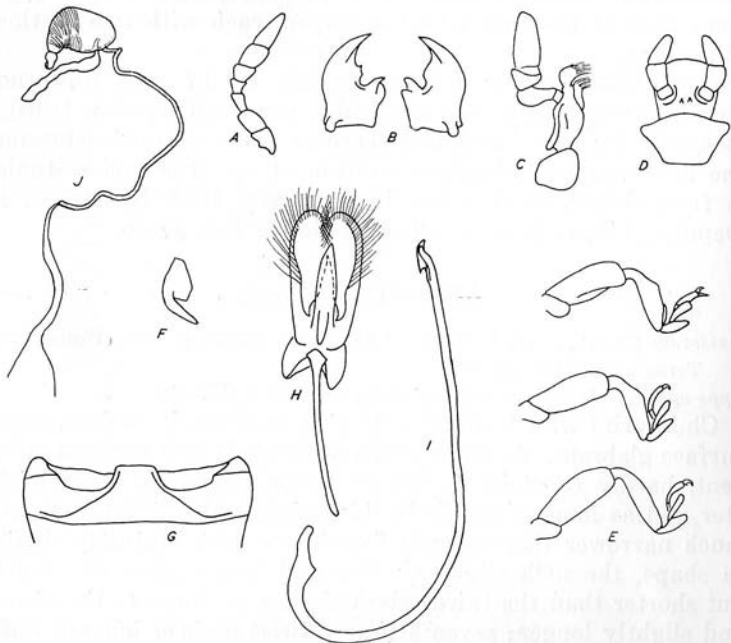


FIG. 15. *Anisorcus fryi* Crotch.

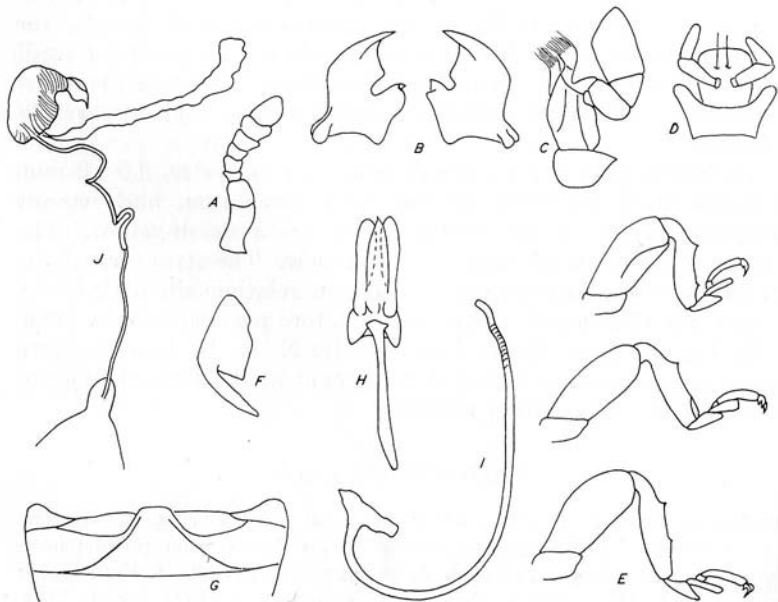


FIG. 16. *Chilocorus cacti* (Linné).



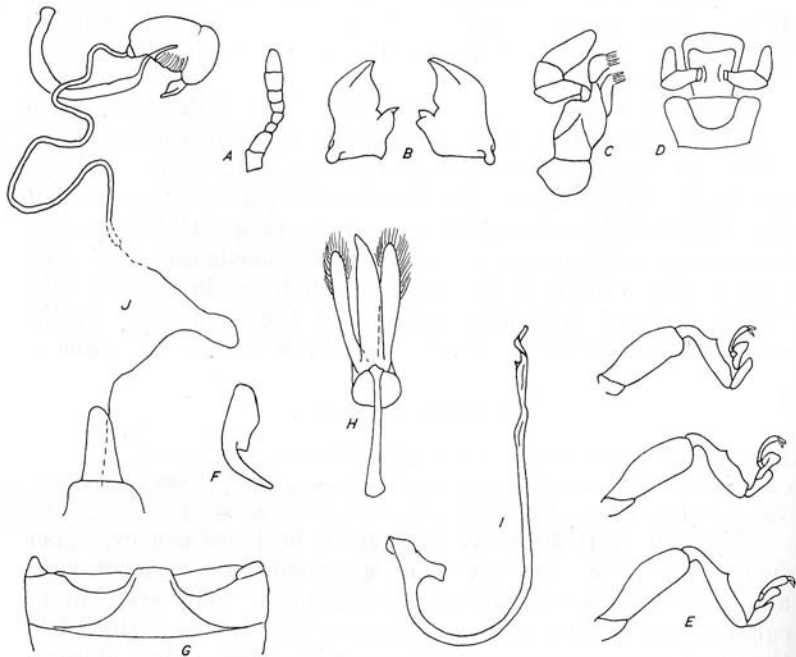


FIG. 17. *Egius platycephalus* Mulsant.

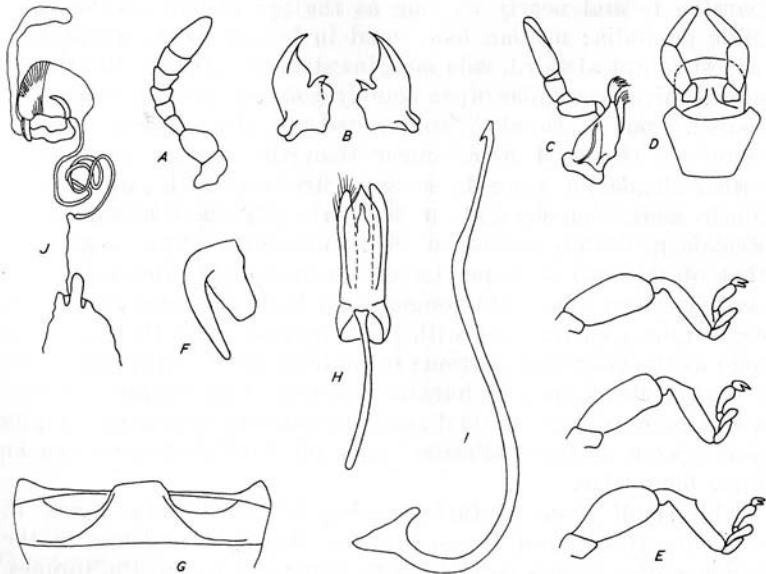


FIG. 18. *Phaenochilus punctifrons* Weise.