

UNION DES ENTOMOLOGISTES BELGES
Sous le Haut Patronage de S.M. le ROI

LAMBILLIONEA

REVUE INTERNATIONALE D'ENTOMOLOGIE



109ème ANNEE
N° 2 JUIN 2009
BRUXELLES (Tervuren)

**A NEW SUBSPECIES OF
CARABUS (CRATOCECHENUS) AKININI MORAWITZ, 1886 FROM CHINA
(Coleoptera, Carabidae)**

Dmitry OBYDOV *

* Timiryazev's State Museum of Biology, 123242, Malaya Gruzinskaya str. 15, Moscow, Russia. E-mail: obydovdv@mtu-net.ru

Résumé. Dans cet article est décrite une nouvelle sous-espèce de *Carabus (Cratocechenus) akinini*: *Carabus (Cratocechenus) akinini yiningensis* ssp. n. de Chine. Ses caractères distinctifs sont énoncés.

Abstract. A new subspecies of *Carabus (Cratocechenus) akinini*: *Carabus (Cratocechenus) akinini yiningensis* ssp. n. is described from China. Diagnostic data are given.

Key words: Coleoptera, Carabidae, *Carabus (Cratocechenus) akinini*, new subspecies, China, Yining (Kuldzha).

Introduction

Carabus (Cratocechenus) akinini Morawitz, 1886 inhabits huge territory from mountains of Kirghizia and Kazakhstan up to northern China, forming few well distinguished subspecies. During work with the collection of the Moscow Biological Museum one specimen of *C. akinini* has been found. This specimen differ from all known for today subspecies of *C. akinini* and in my opinion deserving subspecific rank.

The descriptions of *Carabus (Cratocechenus) akinini yiningensis* ssp. n. is given below.

Carabus (Cratocechenus) akinini yiningensis ssp. n. (Fig.1).

Holotype: female, China, Kuldzha (Yining), VI.1936 (in the collection of the Moscow Biological Museum).

Description. Body length is 21.7 (including mandibles), width 8.2 mm.

Head strongly thickened, ratio width of pronotum/width of head 1.60; eyes slightly convex; mandibles relatively long, slightly curved and sharply pointed at the apex; retinaculum of the right and left mandibles one-dentate slightly prominent; surface of mandibles smooth. Frontal furrows not deep, inside anteriorly with few coarse punctures, posteriorly nearly smooth. Frons, vertex and neck nearly smooth; vertex with few punctures. Labrum slightly wider than clypeus strongly notched, with two lateral setae. Antennae short, protruding beyond the base of pronotum by two apical segments; palpi strongly dilated; penultimate segment of the maxillary palpi equal to last segment; penultimate segment of the labial palpi with five setae. Mentum tooth broad equal to lateral lobes (Fig.3); submentum with two setae.

Prothorax cordiform, relatively convex; ratio width/length 1.10. Pronotum nearly smooth on disk, laterally, posteriorly and anteriorly with sparse coarse wrinkles and punctures. Median longitudinal line indistinct; basal foveae triangular deep, inside coarsely-wrinkled and punctured. Sides of pronotum broadly margined; lobes of hind angles triangular long, bent downwards. Lateral margin with two setae: one setae before middle and one setae near hind angle.

Elytra oval, widest at about middle; shoulders prominent; sides of elytra broadly margined. Ratio length/width 1.20; ratio width of elytra/width of pronotum 1.50. Elytral sculpture: all elytral interspaces slightly convex, tertiary elytral interspaces partially reduced, primary and secondary elytral interspaces about equally developed, primary slightly broader, all elytral interspaces partially conjugated transversely. Primary elytral foveoles indistinct; striae coarsely punctured.

Abdominal sternites smooth, metepisternum smooth, not longer than its width; sternal sulci absent. Legs of normal length.

Body dark bronze with blue lustre; prothorax red; four basal antennae segments brown, legs and ventral body surface black.

Differential diagnosis. The subspecies of *Carabus akinini* most close territorially to the area of a new subspecies is *Carabus (Cratocechenus) akinini ketmenensis* Dolin, 1991, which has been described from Ketmen Mt Ridge.

The new subspecies differs from this subspecies of *Carabus akinini* by following features: frons, vertex and neck nearly smooth (while in *Carabus akinini ketmenensis* frons, vertex and neck with sparse coarse punctures and few wrinkles); antennae short, protruding beyond the base of pronotum by two apical segments (while in *Carabus akinini ketmenensis* antennae longer, protruding beyond the base of pronotum by four apical segments); pronotum nearly smooth on disk and median longitudinal line indistinct (while in *Carabus akinini ketmenensis* pronotum completely coarsely-punctured, median longitudinal line distinct); mentum tooth broad obtuse, equal to lateral lobes (while in *Carabus akinini ketmenensis* mentum tooth narrow sharply pointed at the apex, longer than lateral lobes, Fig.2); elytra shorter and more convex; elytral interspaces less convex partially conjugated transversely, tertiary elytral interspaces partially reduced; abdominal sternites smooth (while in *Carabus akinini ketmenensis* abdominal sternites with fine wrinkles); palpi, tibiae and tarsi black (while in *Carabus akinini ketmenensis* palpi, tibiae and tarsi reddish-brown). The new subspecies differs from other subspecies of *Carabus akinini* by very special elytral sculpture and structure of mentum.

Distribution. China, Yining (Kuldzha) environs.

References

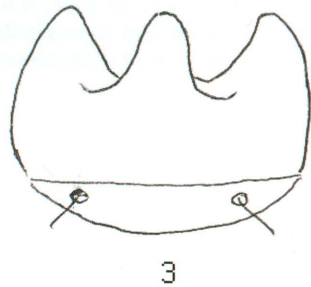
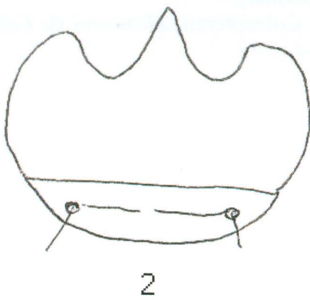
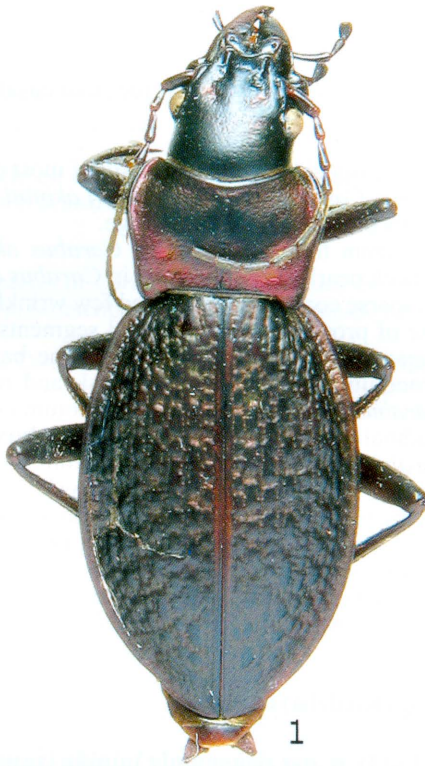
- DOLIN V. G., 1991. [A new subspecies of *Carabus akinini* (Coleoptera, Carabidae) from south-east Kazakhstan]. *Vestn. zool.*, N.6: 73-75. [in Russian].
 MORAWITZ A., 1886. Zur Kenntnis der adepagen Coleopteren. *Mémoires de l'Académie Impériale des Sciences de St.-Petersbourg.*, VII, Ser. 34: 1-88.

Figures

Fig. 1. *Carabus (Cratocechenus) akinini yiningensis* ssp. n. (Holotype) (general view).

Figs 2-3. Mentum:

2. *Carabus (Cratocechenus) akinini ketmenensis* Dolin, 1991
3. *Carabus (Cratocechenus) akinini yiningensis* ssp. n.



Carabus (Cratocechenus) akinini yiningensis ssp. n. (Fig.1).