

Studies upon of *Archolabus methneri* Voss (Coleoptera: Curculionidae) from Tanzania

Andrei A. Legalov

Legalov A.A. 2006. Studies upon of *Archolabus methneri* Voss (Coleoptera: Curculionidae) from Tanzania. *Baltic J. Coleopterol.* 6 (2): 129 - 132.

In the paper redescription of *Archolabus methneri* Voss is resulted. New synonyms: Archolabinae Voss, 1929, syn.n. for Nerthopini Lacordaire, 1866 is presented.

Key words: Coleoptera, Curculionoidea, Curculionidae, Nerthopini, *Archolabus*, Tanzania

Andrei A. Legalov. Zoological Museum, Institute of Animal Systematics and Ecology, Siberian Branch, Russian Academy of Sciences, Frunze street-11, Novosibirsk 630091 Russia; e-mail: legalov@ngs.ru

INTRODUCTION

In 1929 from East Africa, the new genus *Archolabus* Voss, 1929 with new species *Archolabus methneri* Voss, 1929 from the new subfamily Archolabinae Voss, 1929 of family Attelabidae has been described (Voss, 1929). In later work by Voss (1965) considered it in composition of tribe Attelabini of subfamily Attelabinae. Kuschel (1995) proposed that Archolabinae concerned to subfamily Attelabinae. However, in later works (Alonso-Zarazaga, Lyal 1999; Riedel 2002) its status remained constant. In 2001, the author studied types, designated lectotype and transferred these taxa to the subfamily Curculioninae of the family Curculionidae in a rank of a tribe (Legalov 2001). The new material allowed specifying the status of this group.

MATERIAL AND METHODS

Type specimens are kept in the MNHUB = Museum für Naturkunde der Humboldt-Universität

(Berlin) and SMTD = Staatliches Museum für Tierkunde (Dresden).

RESULTS

Family Curculionidae Latreille, 1802

Subfamily Curculioninae Latreille, 1802

Tribe Nerthopini Lacordaire, 1866 (Figs. 1–6)

Nerthopides Lacordaire, 1866: 19 (Curculionidae)

Microstylides Lacordaire, 1866: 20 (Curculionidae)

Acalloplastides Lacordaire, 1866: 22 (Curculionidae)

Archolabinae Voss, 1929: 200, **syn.n.** (Attelabidae)

Archolabinae: Dalla Torre, Voss, 1930: 3 (Attelabidae)

Archolabinae: Alonso-Zarazaga, Lyal, 1999: 46 (Attelabidae)

Archolabinae: Riedel, 2002: 18, 19 (Attelabidae)

Archolabini: Legalov, 2001: 46 (Curculionidae)

Remarks. The author studied the genera *Nerthops* Schoenherr, 1826 (type genus of the

tribe Nerthopini), *Menesinus* Faust, 1898 and *Archolabus* Voss, 1929 (type genus of the tribe Archolabini). These genera are close to each other and belong to one tribe. The short rostrum, wide pronotum and elytra, femora with teeth and short antennae characterize them.

Genus *Archolabus* Voss 1929

Archolabus Voss, 1929: 200

Type species: *Archolabus methneri* Voss, 1929

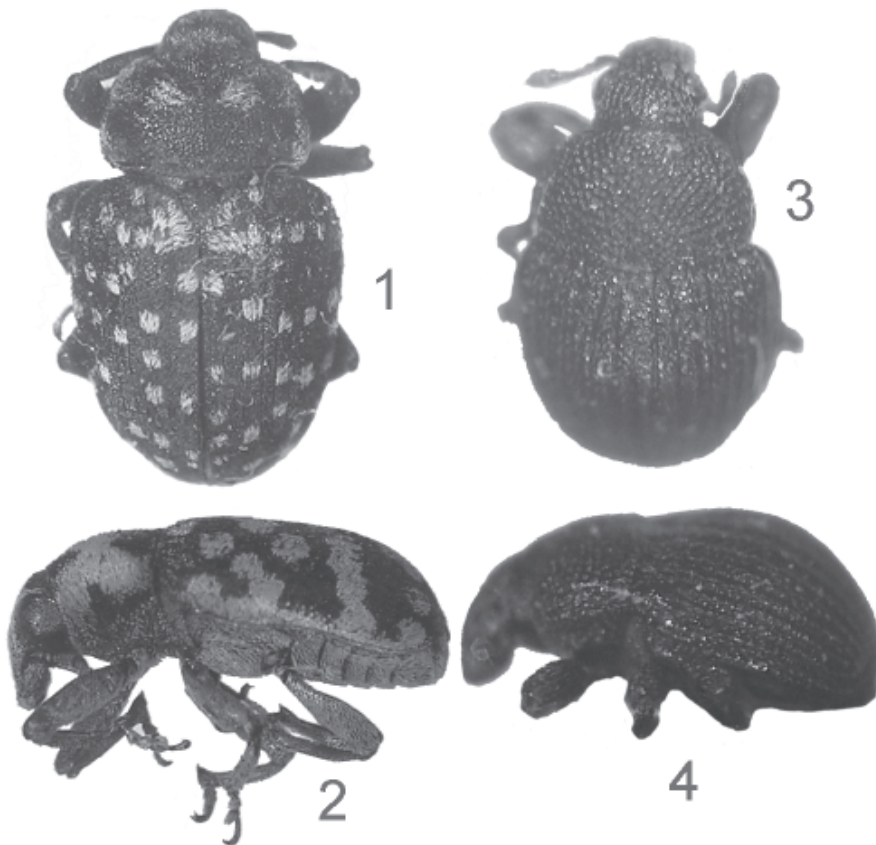
Archolabus methneri Voss, 1929 (Figs. 5–6)

Archolabus methneri Voss, 1929: 200

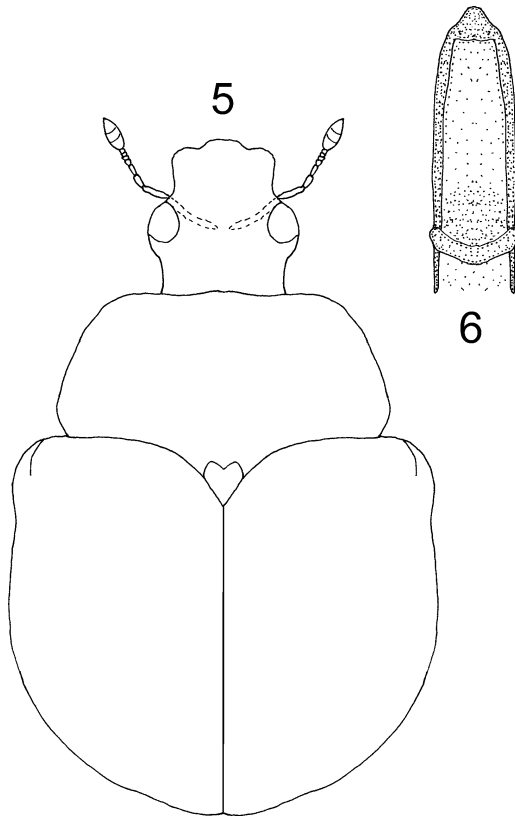
Material. Lectotype – female (MNHUB), Tanzania, “Ost Usambara, D. O. Afr. 12.15., leg. Methner”, “*Archolabus methneri* n. sp. Det. E. Voss”, Lectotypus *Archolabus methneri* Voss det. Dr. E. Haaf, 1961”, “Zool. Mus. Berlin”, “Lectotypus *Archolabus methneri* Voss des. A. Legalov, 2001”. Paralectotypes: male (MNHUB) and female (MNHUB) with labels as at lectotype.

Description. Body black, shining, naked.

MALE. Head short and wide, densely rugosity punctate. Rostrum also short and wide. Antennae attached at the basis of the rostrum. Eye not large, convex. Forehead flat, with medial striae.



Figs. 1-4. Nerthopini gen. sp.: 1 – *Nerthops punctatus* Fabricius, 1798 (dorsally), 2 – *N. punctatus* (laterally), 3 – *Menesinus flavicornis* (dorsally), 4 – *M. flavicornis* (laterally).



Figs. 5-6. *Archolabus methneri*: 5 – contour of the body, 6 – aedeagus.

Antennae short. Scapus weakly elongated. 1st segment of the funicle rounded; 2nd segment thin, elongated; 3rd–7th segments wide and short. Clava compact, short, weakly pointed. Pronotum very wide, with convex. Disk densely and finely tuberculous with carinas on sides. Scutellum pentagonal. Elytra wide, with developed shoulders and greatest width on the middle. Intervals flat, finely tuberculous. Striae clear, deep. Apex of the elytra rounded. Wings normally developed. Metepisternum narrow, densely punctate. Coxa widely separated. Legs average sizes. Femora widened, densely punctate, with 2 teeth on the middle. Tibiae strongly, arcuately curved, with tooth at internal apical edge. Meso- and metatibiae shorter and weaker curved, with tooth on the external edge. Tarsi long. 1st and 2nd segments elongated. 3rd segment bilobed.

5th segment short. Claws separated, with short teeth at the basis. Aedeagus (fig. 2). Length of the body: 3.4 mm.

FEMALE. Head hardly shorter than at males. Eyes weaker convex. Abdomen convex. 1st ventrite very wide. 2nd ventrite narrower. 3rd and 4th ventrites very narrow. 5-th ventrite wider, wider than 4th ventrite. Pygidium not hidden by the elytra, densely punctate. Ventral specula sclerotized. Length of the body: 3.5–3.8 mm.

Distribution. East Africa: Tanzania.

Remarks. This genus is very close to genus *Menesinus* (Faust, 1898) from India. The author is two syntypes of *Menesinus flavicornis* Faust, 1898 (figs. 3–4) from the collection SMTD studied. *Archolabus* Voss differs from *Menesinus* Faust by the femora with two teeth, larger sizes, finely tuberculous disk of the pronotum with carinas on sides and black antennae.

ACKNOWLEDGEMENTS

I wish to thank Dr. F. Hieke (Berlin), K.-D. Klass (Dresden), Dipl. Biol. H. Wendt (Berlin) and Dr. N. Yunakov (Saint Petersburg), for help with the work.

REFERENCES

- Alonso-Zarazaga M.A., Lyal C.H.C. 1999. A world catalogue of families and genera Curculionoidea (Insecta: Coleoptera) (excepting Scolytidae and Platypodidae). Barcelona: Entomopraxis. 315 pp.
- Dalla Torre K.W., Voss E. 1930. Curculionidae: Archolabinae, Attelabinae, Apoderinae. Coleopterorum Catalogus auspiciis et auxilio W. Junk 110: 1–42, 1–42.
- Faust J. 1898. Beschreibung neuer Coleopteren von Vorder- und Hinterindien aus der Sammlung des Hrn. Andrewes in London.

- Deutsche Entomologische Zeitschrift 1898 (2): 273–333. (Insecta: Coleoptera: Curculionoidea) in the Papuan Region. Ph.Diss. Munich. 216 pp.
- Kuschel G. 1995. A phylogenetic classification of Curculionoidea to families and subfamilies. *Memoirs of the Entomological Society of Washington* 14: 5–33.
- Voss E. 1929. Die Unterfamilien Attelabinae und Apoderinae. (Col. Curc.) (18. Beitrag zur Kenntnis der Curculioniden). *Stettiner Entomologische Zeitung* 90 (2): 161–242.
- Lacordaire T. 1866. *Histoire Naturelle des Insectes. Genera des Coléoptères ou exposé méthodique et critique de tous les genres proposés jusqu'ici dans cet ordre d'insectes*. 7. Paris. Roret. 620 pp.
- Voss E. 1965. Die Unterfamilie Camarotinae, ihre Beziehungen zur Familie Attelabidae sowie ein Versuch, die phylogenetischen Zusammenhänge innerhalb der letzteren zur Darstellung zu bringen (Coleoptera Curculionidae). *Entomologische Abhandlungen* 32(11): 222–244.
- Legalov A.A. 2001. To the systematic position of the genus *Archolabus* (Coleoptera). *Zoological Herald* 35(3): 46 (in Russian).
- Riedel A. 2002. Taxonomy, phylogeny, and zoogeography of the weevil genus *Euops*

Received: 06.10.2006.
Accepted: 15.11.2006.