

TO THE KNOWLEDGE OF FLEA BEETLES (COLEOPTERA: CHRYSOMELIDAE: ALTICINAE) OF THE LATVIAN FAUNA. 7. GENUS *ALTICA* GEOFFROY, 1762

Andris BUKEJS

Institute of Systematic Biology, Daugavpils University, Vienības 13, Daugavpils, LV-5401, Latvia. E-mail: carabidae@inbox.lv

Abstract. The current paper summarizes information on the Latvian fauna of *Altica* Geoffroy, 1762. Faunal data on 10 species of this genus are presented. *Altica ampelophaga* Guérin-Méneville, 1858 is excluded from the list of Latvian Coleoptera. The bibliographical information on this flea beetle genus in Latvia is summarized for the first time. Original photos of female styles of all *Altica* species of the local fauna and the annotated list of Latvian *Altica*, including 14 species are provided.

Key words: Coleoptera, Chrysomelidae, *Altica*, Latvia, fauna, female styles

INTRODUCTION

Seventy-three species of the genus *Altica* Geoffroy, 1762 are reported from the Palaearctic region (Döberl 2010). Fifteen of them are known from eastern Europe (Bieńkowski 2004) and 16 species are reported for Fennoscandia and the Baltic region (Silfverberg 2004).

The second edition of the check-list of Latvian beetles (Telnov 2004) listed 14 species of *Altica* Geoffroy, 1762 and one species *A. deserticola* (Weise, 1889) was excluded. The number of recorded species of this genus in adjacent territories slightly varies: Belarus – 9 species (Lopatin & Nesterova 2005), Estonia – 9 species (Silfverberg 2004), Lithuania – 9 species (Pileckis & Monsevičius 1997; Silfverberg 2004), St.-Petersburg and the Leningrad region – 6 species (Romantsov 2007), the Kaliningrad region – 11 species (Alekseev 2003; Alekseev & Bukejs (in press); V. Alekseev, pers. comm.).

The first information on flea beetle species of the genus *Altica* in Latvia was published at the beginning of the 19th century (Precht 1818). More than 25 works appeared in Latvia subsequently. Pūtele (1971a) provided information on 10 species of *Altica* in Latvia. Fragmentary faunal data can be also found in articles by the following authors: Palij 1958; Šmits 1962; Pūtele 1968, 1970b, 1974, 1980, 1981a, b; Prieditis & Pūtele 1976; Barševskis 1993; Telnov *et al.* 2007; Bukejs & Telnov 2007.

Imagoes of *Altica* feed on leaves: mostly on herbaceous Onagraceae (*Epilobium*, *Oenothera*), Lythraceae (*Lythrum*), Euphorbiaceae (*Euphorbia*), Compositae (*Cirsium*, *Carduus*, *Sonchus*), Polygonaceae (*Polygonum*, *Rumex*), Rosaceae (*Filipendula*, *Potentilla*, *San-*

guisorba), Cistaceae (*Helianthemum*), Fabaceae (*Lathyrus*), Ericaceae (*Calluna*); rarely on deciduous trees and shrubs (*Betula*, *Corylus*, *Salix*, *Populus*, *Alnus*). In contrast to most flea beetle larvae, which are miners of stems and roots, larvae of the genus *Altica* feed externally on leaves of host plants (Bieńkowski 2004).

The current paper is a continuation of studies on the Latvian fauna of Alticinae (Bukejs 2008a, b, 2009a, b, c, d, 2010). The aim of this study is to summarize data on the Latvian fauna of genus *Altica*. The bibliographical information on this genus has been compiled for the first time. Faunal data on 10 species and the annotated list of Latvian species are presented. Altogether, 14 species of genus *Altica* are now known from Latvia.

MATERIAL AND METHODS

A total of 807 specimens of *Altica* were reviewed during the current investigation. The material reviewed is stored in the collection of beetles of the Institute of Systematic Biology, Daugavpils University (DUBC, Daugavpils, LV), the collection of Institute of Biology, Latvian University (LUBI, Salaspils, LV), the collection of Latvian Nature Museum (LDM, Rīga, LV), V. Pūtele's collection (in Institute of Biology of Latvian University, Salaspils, LV), and in the author's private collection (Daugavpils, LV).

The following keys were used for the identification of specimens: Bieńkowski 2004; Čížek and Doguet 2008; Kangas and Rutanen 1993; Lopatin and Nesterova 2005; Mohr 1966; Warchałowski 2003. To identify specimens, it was necessary to examine male aedeagi and female styles, ventral spiculae and spermathecae. The

systematics followed in this paper is that of Silfverberg (2004). The nomenclature and synonymy used are in compliance with the catalogue of Palaearctic Coleoptera (Döberl 2010).

Host plants are listed in accordance with the monograph by Lopatin and Nesterova (2005). The general distribution of species presented is based on findings reported by Bieńkowski (2004), Borowiec (2004), Hayashi *et al.* (1984), Döberl (2010), Lopatin (1977, 1986), Lopatin and Kulenova (1986), Lopatin and Nesterova (2005), Medvedev (1992), Medvedev and Dubeshko (1992) and Warchałowski (2003).

The classification of chorotypes follows the one proposed by Vigna-Taglianti *et al.* (1999). The chorotype codes used stand for: ASE – Asiatic-European, ASI – Asiatic, CAE – Central Asiatic-European, CEM – Central Asiatic-European-Mediterranean, CEU – Central European, EUR – European, MED – Mediterranean, SIE – Sibero-European, TEM – Turano-European-Mediterranean.

The following information is given for each species: scientific name & author, published bibliographical sources for Latvia, faunal data (sampling locality and date, number of collected specimens in parentheses, information on the habitat and the collector's name), host plants, phenology (Latvian data only; IV, V, VI, VII, VIII, IX, X – months from April to October; in parentheses – ten-day period), the general species distribution and the chorotype code.

Some species on the list are marked with a dash (-). These species have been reported for the Latvian fauna, but they do not seem to occur in the Baltic region, and it is doubtful whether they have ever occurred in Latvia. These species are herewith excluded from the list of Latvian Coleoptera.

The abbreviations used stand for: d. – district (the system of administrative districts used in Latvia from 1991 to 2009), ? d. – on label, district is not mentioned but there are at least three places by this name in Latvia, env. – environs, Isl. – island, PNT – Protected Nature Territory, NR – Nature Reserve, NP – Nature Park, syn. – synonym, vill. – village or small settlement, C – Central, S – South, N – North, E – East, W – West.

RESULTS AND DISCUSSION

The current research has confirmed the occurrence of 10 species of g. *Altica* in Latvia. *Altica ampelophaga* Guérin-Méneville, 1858 has been removed from the list of Latvian Coleoptera. Overall, the list of *Altica* of the Latvian fauna currently includes 14 species.

Original photos of female styles of all *Altica* species of

the local fauna are presented (Figs 1–19).

The analysis of the distribution of Latvian species of *Altica* has revealed that the range of flea beetle chorotypes is rather wide: Asiatic-European – 3 species (*A. car-duorum* Guer., *A. tamaricis* Schrnk., *A. oleracea* (L.)), Sibero-European – 4 species (*A. engstromi* (Sahl.), *A. chamaenerii* (H. Lindberg), *A. brevicollis* Foudr., *A. helianthemii* (All.)), Central Asiatic-European-Mediterranean – 1 species (*A. palustris* (Wse.)), Central Asiatic-European – 1 species (*A. carinthiacea* (Wse.)), Turano-European-Mediterranean – 1 species (*A. impressicollis* (Reiche)), European – 3 species (*A. aenescens* (Wse.), *A. lythri* Aubé, *A. quercetorum saliceti* Ws.) and Central European – 1 species (*A. longicollis* (All.)).

Annotated list of *Altica* species of the Latvian fauna

Chrysomelidae Latreille, 1802

Alticinae Newman, 1835

Altica Geoffroy, 1762

syn.: *Graptodera* Chevrolat, 1836; *Haltica* Müller, 1764; *Haltica* Koch, 1803

A. aenescens (Weise, 1888)

References: Telnov *et al.* 1997; Telnov 2004.

Examined material: 27 specimens: Aizkraukle d.: 6 km N Aizkraukle, Aizkraukles purvs (bog) PNT, 1 July 2008 (14, margin of bog, leg. A. Bukejs), 15 August 2008 (2, margin of bog, on *Betula*, leg. A. Bukejs); Daugavpils d.: Ilgas, Silene NP, 1 June 1989 (1, leg. A. Barševskis); Zaļumi, 2–16 September 2001 (2, leg. G. Lociks); Jēkabpils d.: Zasa, 19 June 2000 (1, leg. I. Leiskina); Madona d.: Teiču purvs (bog), 7 May 1985 (1, leg. anonymous), 5 May 1986 (1, leg. anonymous), 11 May 1991 (1, leg. V. Spuņģis); Talsi d.: Ances purvi (bogs) and meži (forests) PNT, 27 June 2006 (1, leg. A. Barševskis); Ventspils d.: Moricsala Isl., Moricsala NR, 1 May 2003 (3, leg. U. Valainis).

Host plants: *Betula pubescens*, *B. humilis* (Betulaceae).

Phenology: V, VI, VII, VIII, IX.

General distribution: Europe. [EUR]

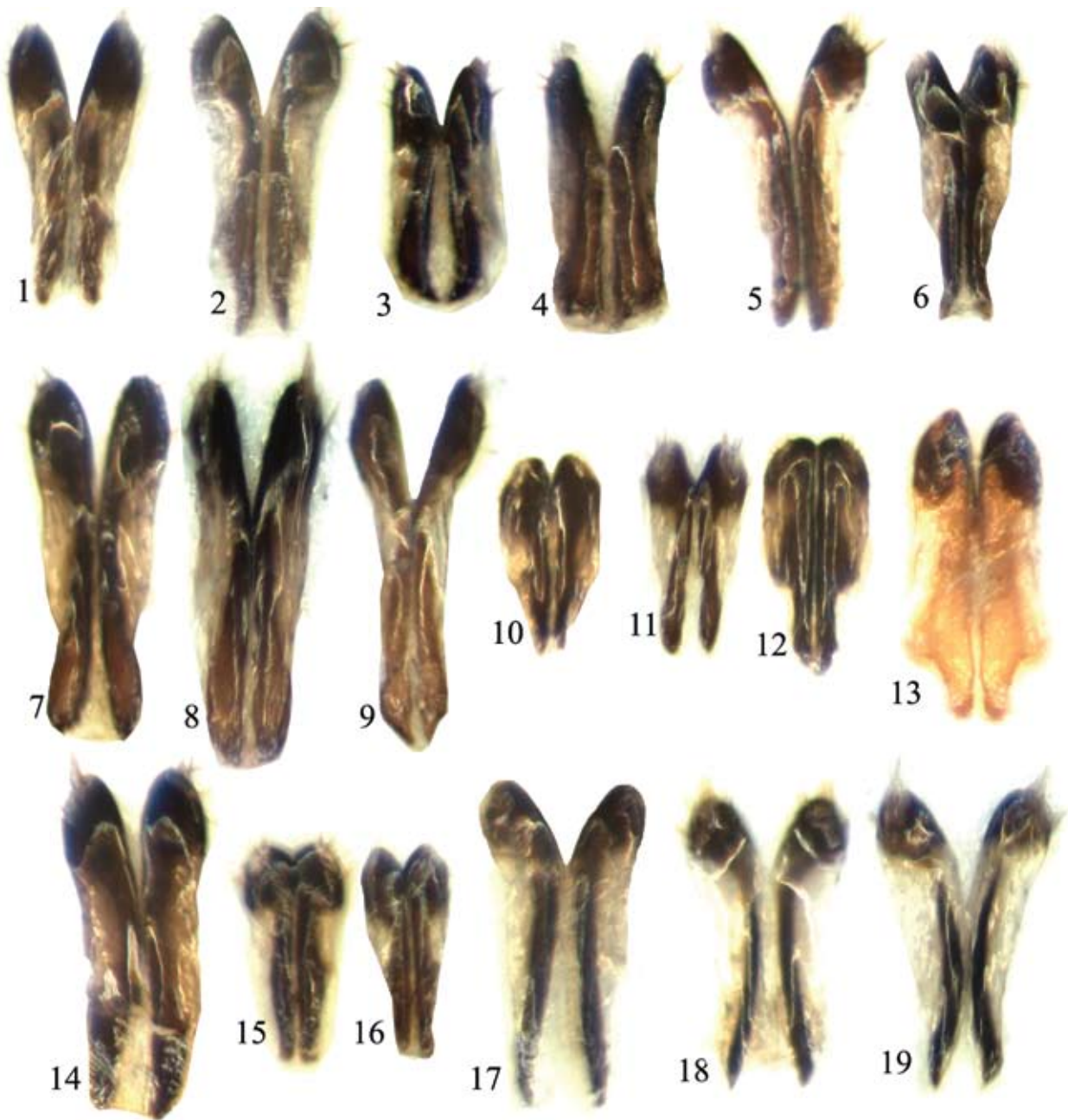
Note: hitherto, this species has been reported for the Latvian fauna only in catalogues (Gruev & Döberl 1997; Telnov *et al.* 1997; Telnov 2004) without faunal data.

(-) *A. ampelophaga* (Guérin-Méneville, 1858)

References: Pūtele 1974 (*Haltica*); Priedītis and Pūtele 1976 (*Haltica*); Telnov *et al.* 1997; Telnov 2004.

Examined material: not confirmed by the author.

Host plants: in literature (Bieńkowski 2004), *Vitis* (Caryophyllaceae), *Oenothera* (Onagraceae) are mentioned as host plants.



Figures 1–19. Styles (only most typical forms): 1 – *Altica aenescens*, 2 – *A. brevicollis*, 3 – *A. carinthiacea*, 4 – *A. chamaenerii*, 5 – *A. longicollis*, 6 – *A. impressicollis* (specimen from Italy), 7–9 – *A. engstromi*, 10 – *A. helianthemi* (specimen from Austria), 11 – *A. oleracea*, 12 – *A. carduorum* (specimen from Poland), 13 – *A. quercetorum* (specimen from Poland), 14 – *A. lythri* (specimen from Germany), 15–16 – *A. palustris*, 17–19 – *A. tamaricis*.

General distribution: S Europe (northward to C France and SW Germany), N Africa. [MED]

Note: the species was reported for the Latvian fauna from two localities in Jelgava district (Pūtele 1974; Priedītis & Pūtele 1976). Pūtele's collection contains no voucher specimens. These reports were probably based on misidentification. The occurrence of this species in Latvia is doubtful. Therefore it was removed from the list of Latvian Coleoptera.

A. lythri Aubé, 1843

syn.: *A. epilobii* Allard, 1859

References: Seidlitz 1872–1875, 1887–1891 (*Haltica*); Rathlef 1905 (*Haltica*); Palij 1958 (*Haltica*); Pūtele 1970a, b, 1971a, b, 1974, 1980, 1981b, 1984 (*Haltica*); Telnov 2004.

Examined material: not confirmed by the author.

Host plants: *Epilobium* (Onagraceae), *Lythrum* (Lythraceae).

Phenology: V, VI.

General distribution: Europe, the Caucasus, Asia Minor (Turkey). [EUR]

Note: in Silfverberg's (2004) catalogue the species is listed as occurring in Denmark, Finland and Lithuania. It is also known from Belarus (Lopatin & Nesterova 2005).

A. engstromi (Sahlberg, 1894)

syn.: *A. filipendulae* Chaschchina, 2006

References: Pūtele 1974, 1980, 1981b, 1984 (*Haltica*); Barševskis 1993 (*Haltica*); Telnov *et al.* 1997; Telnov 2004.

Examined material: 67 specimens: Balvi d.: Kuprava, 19 May 1992 (2, leg. A. Barševskis); Cēsis d.: Bērzkrogs, 3 July 2006 (1, leg. A. Barševskis); Daugavpils d.: Ilgas, Silene NP, 21–24 April 1995 (1, leg. A. Barševskis), 6 July 1995 (7, leg. A. Barševskis); Līksna parish, 2 km N Daugavpils, 17 May 2008 (1, forest edge, leg. A. Bukejs); Stropi, 25 May 2007 (2, swampy bank of Lake Lielais Stropu, leg. A. Bukejs); Jēkabpils d.: Dignāja, 28 July 1999 (1, leg. I. Leiskina); Dunava, April 2002 (9, leg. A. Barševskis), 29 June 2008 (1, leg. A. Barševskis), 1–7 June 2009 (1, leg. K. Barševska); Mezāre, 4 September 2009 (1, roadside, leg. M. Balalainis); Rubeņi, 3 April 1997 (1, in hibernation place, leg. I. Leiskina), 27 June 1999 (1, leg. I. Leiskina); Jelgava d.: Valgunde, 2 May 1972 (2, leg. V. Pūtele); Krāslava d.: Asūne, 26 July 1998 (1, leg. I. Plotka); Ezernieki, Rāzna NP, 24 July 2008 (2, leg. U. Valainis, R. Cibulskis); Peipiņi, 28 August 1989 (1, leg. A. Barševskis); Šķeltova, 9 May 1993 (1, leg. A. Barševskis), 15 July 1994 (1, leg. A. Barševskis), 20 May 1995 (3, humid meadow, leg. A. Barševskis); Ludza d.: Bļāši, 10 August 2008 (2, leg. M. Balalainis); Rundēni, 10 May 2008 (3, forest edge, leg. A. Bukejs); Madona d.: Ošupe env., 2.5 km NE Lake Lubāns, 56°50'03"N 26°56'05"E, 6 July 2008 (2, bank of the Aiviekste River and wet meadow, leg. M. Balalainis, A. Bukejs); Ogre d.: Ņēga River connection with Daugava River, 29 June 2006 (1, leg. A. Barševskis); Preiļi d.: Jersika, Kurpnieki house, 7 June 2006 (2, leg. A. Barševskis, K. Barševska), 12 May 2007 (1, leg. A. Barševskis), 9 May 2008 (1, leg. A. Barševskis), 31 May 2008 (1, leg. A. Barševskis); Rēzekne d.: Puša, 27 May 2002 (1, leg. A. Barševskis); Rīga d.: Saulkrasti S env., Inčupe train station, 14 June 1974 (6, meadow, leg. anonymous), 14 August 1974 (1, meadow, leg. anonymous); Ventspils d.: Moricsala Isl., Moricsala NR, 29 June 2002 (1, leg. U. Valainis), October 2003 (1, window trap, leg. U. Valainis), 30 May 2006 (1, leg. E. Rudāns), 15 July 2008 (1, leg. V. Alekseev, A. Pavlova), 15 July 2008 (1, leg. A. Bukejs).

Host plants: *Filipendula ulmaria* (Rosaceae) (Lind-

berg 1926; Kangas & Rutanen 1993; Sahlberg 1913; H.-E. Wanntorp, pers. comm.).

Phenology: IV (3), V, VI, VII, VIII, IX.

General distribution: N Europe (Fennoscandia, Karelia), E Baltic region (Estonia, Latvia, Lithuania), Central European territory of Russia, Siberia, Kazakhstan, the Russian Far East. [SIE]

A. carduorum Guérin-Méneville, 1858

syn.: *A. cirsii* Israelson, 1956

References: Palij 1958 (*Haltica*); Pūtele 1970a, b, 1971a, b (*Haltica*); Priedītis and Pūtele 1976 (*Haltica*); Telnov *et al.* 1997; Telnov 2004.

Examined material: not confirmed by the author.

Host plants: *Cirsium*, *Carduus*, *Sonchus* (Compositae).

Phenology: no data for Latvia.

General distribution: S, SE and southern part of C Europe, the Caucasus, Asia Minor, Siberia, Altai, Kazakhstan, Central Asia, the Russian Far East; also introduced into North America (Canada). [ASE]

Note: very rare species in Latvia, known from two localities in Bauska (Palij 1958) and Jelgava districts (Priedītis & Pūtele 1976). The record needs confirmation. In Silfverberg's (2004), catalogue the species is listed as occurring in Finland, Latvia and Sweden.

A. brevicollis Foudras, 1860

syn.: *A. oleracea* Ratzeburg, 1839; *A. coryli* Allard, 1860

References: Palij 1958 (*Haltica*); Pūtele 1970a, b, 1971a, b, 1981a, 1984 (*Haltica*); Barševskis 1993 (*Haltica*); Telnov *et al.* 1997; Telnov 2004.

Examined material: 13 specimens: Aizkraukle d.: Alstiķe, 4 July 2004 (1, leg. A. Barševskis); Bauska d.: Bārbele, 25 May 2009 (4, leg. A. Barševskis), 8 June 2009 (5, leg. A. Barševskis, R. Orlovskis); Daugavpils d.: Daugavpils, Križi, 20 May 2001 (1, leg. G. Lociks); Jūrmala: Kūdra, 26 June 2008 (2, leg. A. Titovs).

Host plants: *Corylus avellana* (Corylaceae).

Phenology: V, VI, VII.

General distribution: Europe, Caucasus, Asia Minor, Iran, Siberia, Altai, Kazakhstan, the Russian Far East. [SIE]

Note: rare species in Latvia with few known localities.

A. chamaenerii (H. Lindberg, 1926)

References: Pūtele 1974 (*Haltica*); Priedītis and Pūtele 1976 (*Haltica*); Barševskis 1993, 2002; Telnov *et al.* 1997; Telnov 2004.

Examined material: 25 specimens: Aizkraukle d.: Rīteri, 20 June 2006 (1, leg. A. Barševskis); Bauska d.: Bārbele, 8 May 2009 (3, leg. A. Barševskis, R. Orlovskis); Cēsis d.: Taurene parish, Brežģa hill, 3 July

2006 (1, leg. A. Barševskis, U. Valainis, A. Pankjāns); Daugavpils d.: Daugavpils, Mežciems, 28 May 1993 (1, leg. A. Barševskis), 1 June 2008 (1, edge of pine forest, leg. A. Bukejs); 3 km N Daugavpils, 3 September 2009 (1, inland dunes, edge of pine forest, leg. A. Bukejs); Ilgas, Silene NP, 11 May 1996 (1, leg. R. Cibulskis), 27 June 2007 (3, leg. A. Barševskis), 9 June 2008 (1, leg. A. Barševskis, A. Soldāns); Lociki, 26 May 2001 (1, leg. G. Lociks); Ļubaste E env., Daugavpils beltway, 16 June 2008 (1, leg. A. Barševskis); Stropi, 3 June 2006 (1, leg. A. Bukejs); Jēkabpils d.: Dunava, 18 May 2008 (2, edge of forest, leg. A. Barševskis); Jelgava d.: Jelgava, near Rīga–Šiauliai road, 15 June 2008 (2, leg. A. Barševskis, R. Orlovskis); Ogre d.: Ķegums, 13 July 2006 (1, bank of the Daugava River, leg. A. Barševskis, K. Barševska); Rīga d.: Babīte, 4 August 1998 (1, leg. A. Barševskis); Mārupe env., 7 July 2009 (1, leg. K. Barševska, A. Barševskis); Ventspils d.: Moricsala Isl., Moricsala NR, June 2003 (1, leg. U. Valainis), July 2003 (1, leg. U. Valainis).

Host plants: *Epilobium angustifolium* (Onagraceae) (Lindberg 1926; Kangas & Rutanen 1993; H.-E. Wanner, pers. comm.).

Phenology: V, VI, VII, VIII, IX (1).

General distribution: is spread from N Europe and E Baltic region (Estonia, Latvia, Lithuania) to Kamchatka; is also reported from Slovakia. [SIE]

A. quercetorum saliceti Weise, 1888

syn.: *A. erucae* Oliver, 1808

References: Seidlitz 1887–1891 (*Haltica erucae* Ol.); Baltiņš 1899 (*Haltica*); Palij 1958 (*Haltica*); Rupais 1962 (*Haltica*); Pūtele 1970a, b, 1971a, b, 1974, 1980, 1981a, b, 1984 (*Haltica saliceti* Ws.); Telnov *et al.* 1997; Telnov 2004; Spuņģis 2008.

Examined material: not confirmed by the author.

Host plants: *Salix* (Salicaceae).

Phenology: V, VI.

General distribution: Europe, the Caucasus, Asia Minor. [EUR]

Note: a very rare species in Latvia, known from three localities only (Pūtele 1974, 1981a; Spuņģis 2008). In Silfverberg's (2004), catalogue the species is recorded for Finland, Sweden, Norway, Latvia and Lithuania.

A. tamaricis Schrank, 1785

syn.: *A. consobrina* Duftschmid, 1825; *A. erucae* Fabricius, 1792

References: Seidlitz 1872–1875 (*Haltica consobrina* Duft.), 1887–1891 (*Haltica*); Rathlef 1905 (*Haltica*); Palij 1958 (*Haltica*); Pūtele 1970a, b, 1971a, b, 1974, 1980, 1981a, b, 1982, 1984 (*Haltica*); Barševskis 1993 (*Haltica*), 2002; Telnov *et al.* 1997; Telnov 2004;

Kalniņš *et al.* 2007; Bukejs and Telnov 2007.

Examined material: 106 specimens: Cēsis d.: Cēsis, 26 July 2007 (2, bank of the Gauja River near the bridge, leg. A. Barševskis); Daugavpils d.: Butišķi, 6 August 2001 (2, leg. G. Lociks), 12 August 2006 (2, bank of the Daugava River, leg. A. Bukejs, M. Balalaikins), 9 September 2007 (4, valley of the Daugava River, leg. A. Bukejs, M. Balalaikins), 25 July 2008 (1, valley of the Daugava River, leg. A. Bukejs); Daugavpils, in town, 8 August 2007 (1, bank of the Daugava River, leg. K. Aksjuta, M. Murd); Dviete, 22 August 2006 (13, leg. A. Barševskis), 12 May 2009 (1, leg. A. Pankjāns, M. Nitcis); Elerne, 31 May 2007 (3, bank of the Daugava River, leg. M. Murd), 13 September 2007 (1, leg. A. Barševskis); Naujene, 20 June 1996 (1, Jezupova park, leg. R. Cibulskis), 27 April 2007 (2, leg. J. Staskeviča, V. Krone), 27 April 2007 (1, leg. K. Aksjuta, M. Murd), 29 April 2008 (4, leg. A. Pankjāns, U. Valainis); 2.8 km S Naujene, Vecpils, 55°55'13"N 26°44'19"E, 9 May 2008 (1, leg. R. Cibulskis); Slutišķi, 1 July 1995 (1, valley of the Daugava River, leg. A. Barševskis), 29 April 2008 (2, leg. A. Pankjāns, U. Valainis); Tabore, 2 July 2007 (1, bank of the Daugava River, leg. A. Pankjāns); Ververu loks (precipice), Daugavas Loki NP, 15 June 1989 (1, leg. A. Barševskis); Jēkabpils d.: Dunava, 25 July 1994 (1, leg. A. Barševskis), 24 June 1995 (1, leg. A. Barševskis), 18 July 1995 (3, leg. A. Barševskis), 12 August 1996 (1, leg. A. Barševskis), 1–5 August 1997 (2, leg. A. Barševskis), 15 June 2002 (2, leg. A. Barševskis), 25–29 June 2006 (1, leg. K. Barševska), 1 April 2007 (2, leg. A. Barševskis), 1–9 August 2007 (3, leg. K. Barševska), 23 July 2008 (11, leg. A. Barševskis), 1 June 2008 (4, leg. A. Barševskis), 22 June 2008 (7, leg. A. Barševskis), 29 June 2008 (1, leg. A. Barševskis), 25 April 2009 (4, leg. A. Barševskis); Sudrabkalns vill., 11 August 2007 (1, bank of the Daugava River, leg. A. Bukejs); Krāslava d.: Skerškānu loks (precipice), Daugavas Loki NP, 55°52'44"N 27°05'35"E, 28 April 2009 (1, leg. M. Nitcis, A. Anishchenko, U. Valainis); Preiļi d.: Jersika, Kurpnieki house, 22–25 June 2007 (1, leg. A. Barševskis); Rīga d.: Sigulda, 12 July 2003 (1, leg. B. Ehnström); Silciems, 15 August 1969 (1, leg. M. Stiprais), 21 August 1970 (12, leg. M. Stiprais); Rēzekne d.: Nagļi, 8 September 2007 (1, bank of Lake Lubāns, leg. A. Bukejs, M. Balalaikins).

Host plants: *Salix* (Salicaceae).

Phenology: IV (3), V, VI, VII, VIII, IX.

General distribution: Europe, the Caucasus, Asia Minor, Near East, Iran, Iraq, Afghanistan, Kazakhstan, Central Asia, Siberia, the Russian Far East, Mongolia, NE China, Korean Peninsula, Japan. [ASE]

Note: one of the most common species of the genus in Latvia.

(-) *A. deserticola* (Weise, 1889)

References: Barševskis 1993 (*Haltica*, misidentification); Telnov *et al.* 1997; Telnov 2004 (removed from the list).

Examined material: the record of this species in 'Atašiena, Teiči Nature Reserve' (Barševskis 1993) was based on misidentification.

Host plants: in literature (Bieńkowski 2004), *Glycyrrhiza* (Fabaceae) is mentioned as a host plant.

General distribution: the southeastern part of European Russia (Astrakhan; south Ural area), the Caucasus, Asia Minor, Near East, Iran, Iraq, Afghanistan, Kazakhstan, Central Asia, Mongolia, N and W China, Korean Peninsula. [ASI]

A. oleracea (Linnaeus, 1758)

syn.: *A. sicula* Allard, 1859; *A. splendens* Mulsant, 1874; *A. opacifrons* Lindberg, 1926

References: Fischer 1784 (*Chrysomela oleracea* L.); Fischer 1791 (*Chrysomela oleracea* L.); Groschke 1805 (*Chrysomela oleracea*); Precht 1818 (*Galleruca oleracea*); Ulanowski 1883 (*Haltica*); Seidlitz 1872–1875, 1887–1891 (*Haltica*); Rathlef 1905 (*Haltica*); Trauberga 1957 (*Haltica*); Palij 1958 (*Haltica*); Pūtele 1970a, b, 1971a, b, 1974, 1980, 1981a, b, 1982, 1984 (*Haltica*); Spuris 1974 (*Haltica*); Priedītis and Pūtele 1976 (*Haltica*); Stiprais and Varzinska 1985 (*Haltica*); Barševskis 1993 (*Haltica*), 2002; Telnov *et al.* 1997; Telnov 2004; Kalniņš *et al.* 2007; Spunģis 2008.

Examined material: 447 specimens: Aizkraukle d.: 6 km N Aizkraukle, Aizkraukles purvs (bog) PNT, 21 June 1995 (1, clearing, leg. A. Barševskis), 4 May 1995 (1, leg. A. Barševskis); Jaunjelgava, 11 August 2006 (1, near the Daugava River, leg. E. Rudāns, A. Barševskis); Nereta, 16 June 2005 (1, leg. A. Barševskis); Balvi d.: Kuprava, 27 August 1994 (1, leg. A. Barševskis); Cēsis d.: Brežģis, Brežģa kalns (hill), 3 July 2006 (3, leg. A. Barševskis, U. Valainis, A. Pankjāns); Daugavpils d.: Bebrene, 5 May 2006 (1, leg. E. Rudāns); Butišķi, 1 July 2009 (6, valley of the Daugava River, dry meadow, leg. A. Bukejs, M. Balalaikins); Daugavpils, near Mežciems, 26 April 1993 (1, xeric habitat, leg. A. Barševskis), 1 July 1997 (1, xeric habitat, leg. A. Barševskis), 1 June 2008 (2, edge of pine forest, leg. A. Bukejs), Daugavpils, Ruģeļi, 25 August 1989 (1, leg. A. Barševskis); Dviete N env., 10 August 2008 (2, clearing, leg. A. Barševskis); Elerne, May 2002 (1, valley of the Daugava River, leg. A. Barševskis), 16 June 2002 (2, leg. A. Barševskis); Ilgas, Silene NP, 27 September 1989 (1, leg. A. Barševskis), 2 July 1993 (1, leg. A. Barševskis), 5 July 1993

(1, leg. A. Barševskis), 3 July 1994 (1, leg. A. Barševskis), 20 June 1995 (2, leg. A. Barševskis), June–July 2000 (4, leg. I. Haka, G. Hļebnaja), 6–15 June 2004 (4, leg. A. Barševskis), 28–30 June 2004 (1, leg. A. Barševskis), 2–10 July 2004 (8, leg. A. Barševskis), 18 May 2005 (1, leg. A. Barševskis), 30 June 2005 (2, leg. A. Barševskis), 8 July 2005 (2, leg. A. Barševskis), 7 September 2005 (10, leg. A. Barševskis), 10 May 2006 (1, leg. A. Barševskis), 5–10 June 2006 (3, leg. M. Verdenfelde), 1–5 July 2006 (2, leg. A. Barševskis), 12–14 October 2006 (3, leg. A. Barševskis), 12–14 October 2006 (1, leg. E. Rudāns), 25–26 June 2007 (1, leg. R. Cibulskis), 1 August 2007 (2, leg. A. Barševskis), 9 June 2008 (4, leg. A. Barševskis, A. Soldāns), 16–19 June 2008 (2, leg. L. Rancāne), 17–20 June 2008 (2, leg. A. Zdanovska, J. Daņilova), 17–20 June 2008 (1, leg. V. Krone, J. Staskeviča), 27 June 2008 (2, leg. T. Vasiljeva, S. Pupiņa), 1–4 July 2008 (4, leg. R. Cibulskis), 2 August 2009 (1, leg. A. Barševskis), 12 August 2009 (1, leg. A. Barševskis); Liksna parish, 1.5 km N Daugavpils, 27 May 2009 (1, inland dunes, leg. A. Bukejs), 2 km N Daugavpils, 4 May 2008 (7, edge of pine forest, leg. A. Bukejs), 3 km N Daugavpils, 24 April 2008 (3, inland dunes, leg. A. Bukejs), 27 July 2008 (21, clearing, leg. A. Bukejs), 3 September 2009 (8, inland dunes, forest edge, leg. A. Bukejs), 4 km N Daugavpils, 29 June 2008 (19, old clearing, on *Epilobium* and *Rumex*, leg. A. Bukejs); Lociki, 20 August 2001 (2, leg. G. Lociks); Ļubaste E env., Daugavpils beltway, 16 June 2005 (10, leg. A. Bukejs), 16 June 2005 (3, leg. A. Barševskis), 16 June 2005 (7, leg. U. Valainis), 25 July 2005 (4, leg. A. Barševskis), 15 June 2006 (1, leg. A. Barševskis), 2 June 2007 (2, leg. A. Barševskis), 11 May 2008 (1, clearing, leg. A. Barševskis), 16 June 2008 (2, forest on continental dunes, leg. A. Barševskis), 22 July 2008 (1, inland dunes, roadside, leg. A. Barševskis), 5 July 2009 (10, leg. A. Barševskis); Mazie Stradišķi, 7 October 2006 (1, leg. A. Pankjāns); Naujene, 27 April 2007 (1, park, leg. K. Aksjuta, M. Murd); Oborūni, 19 May 2001 (1, leg. G. Lociks); Pilskalne, 9 May 2005 (2, leg. A. Barševskis); Šarlote, 19 September 1991 (1, leg. A. Barševskis); Melāņi W env., Egļukalns (hill), 55°52'23"N 26°19'49"E, 1 September 2006 (2, leg. A. Barševskis); Stropi, 9 June 2006 (1, leg. A. Bukejs), 27 June 2006 (1, leg. A. Bukejs), 8 July 2006 (4, leg. A. Bukejs), 17 July 2006 (1, leg. A. Bukejs), 26 May 2007 (1, agrocenosis, leg. A. Bukejs), 28 May 2007 (1, meadow, leg. A. Bukejs), 20 April 2008 (1, clearing, leg. A. Bukejs), 5 May 2008 (1, leg. A. Bukejs), 31 May 2008 (3, leg. A. Bukejs), 8 June 2008 (1, leg. A. Bukejs), 2 July 2008 (2, clearing, leg. A. Bukejs), 12 July 2008 (10, dry uncultivated agrocenosis, on *Oenothera biennis*, leg. A. Bukejs), 11 June 2009 (3, leg. A. Bukejs), 10 August

- 2009 (3, leg. A. Bukejs); Vabole, 22 February 1997 (1, in hibernation place, leg. R. Cibuļskis); Vecsaliena, 21 May 2008 (2, leg. R. Cibuļskis); Zaļumi, 2–16 September 2001 (2, leg. G. Lociks); Dobele d.: Jaunbērze, Mežnieki, 12 August 2008 (6, leg. A. Barševskis); Gulbene d.: Gulbītis SE env., near Lake Ušurs, May–June 2003 (1, burning area, window trap, leg. O. Koškina, A. Barševskis), July 2003 (1, leg. O. Koškina, A. Barševskis), August 2003 (3, burning area, window trap, leg. O. Koškina, A. Barševskis), June 2004 (1, window trap, leg. A. Barševskis), 5 August 2004 (10, leg. A. Barševskis), 20 August 2004 (1, burning area, leg. U. Valainis), September–October 2004 (1, window trap, leg. A. Barševskis, U. Valainis), June 2005 (2, burning area, leg. A. Barševskis, J. Laizāns), 10 July 2005 (1, leg. A. Barševskis), 30 September 2005 (1, leg. A. Barševskis, A. Bukejs, J. Laizāns); Lejasciems, July 2003 (1, burning area, leg. I. Kampāne, A. Barševskis), September–October 2003 (1, burning area, window trap, leg. I. Kampāne, A. Barševskis), 5 August 2004 (3, burning area, leg. A. Barševskis), May 2005 (1, window trap, leg. A. Barševskis), 10 July 2005 (4, leg. J. Laizāns, A. Barševskis); Jēkabpils d.: Dignāja, 12 July 2009 (1, leg. M. Balalaikins); Dunava, 6 April 1996 (1, forest, leg. A. Barševskis), 22–23 August 1998 (3, leg. A. Barševskis), 11–12 August 1998 (1, leg. A. Barševskis), April 2002 (2, dry meadow, leg. A. Barševskis), June 2002 (1, leg. A. Barševskis), 1 June 2002 (5, leg. A. Barševskis), 10–18 June 2006 (10, leg. K. Barševska), 20–31 July 2006 (1, leg. K. Barševska), 7–8 October 2006 (2, leg. A. Barševskis), 13 May 2007 (1, leg. K. Barševska, A. Barševskis), 18 May 2008 (6, leg. A. Barševskis), 16 August 2008 (2, leg. A. Barševskis), 20–31 August 2008 (1, leg. K. Barševska), 1–8 June 2009 (1, leg. K. Barševska); Leimaņi, Zasa NW env., 14 August 2001 (1, leg. I. Leiskina); Rubeņi, 2 April 1997 (1, leg. I. Leiskina), 4 April 1999 (1, leg. I. Leiskina), 5 July 1999 (2, leg. I. Leiskina), 16 July 1999 (4, leg. I. Leiskina), 6 July 2000 (1, leg. I. Leiskina), 18 August 2001 (2, leg. I. Leiskina), 20 August 2001 (1, leg. I. Leiskina); Zasa, 28 July 2001 (1, leg. I. Leiskina); Jelgava d.: Garoza, 21 August 1972 (2, leg. V. Pūtele); Jelgava, near Rīga–Šiauliai road, 15 June 2008 (2, leg. A. Barševskis, R. Orlovskis); Jelgava E env., Kārniņi, 1 June 1974 (1, leg. V. Pūtele); Jelgava E env., Mežciems, 13 August 1972 (1, leg. V. Pūtele); Valgunde, 2 May 1972 (1, leg. V. Pūtele); Krāslava d.: Izvalta, Murāni house, 21 August 1992 (4, leg. A. Barševskis); Lake Čertoks, 27 April 2007 (6, leg. K. Aksjuta, M. Murd); Peipiņi, 28 August 1989 (1, leg. A. Barševskis); Šķeltova, 27 July 1989 (1, leg. A. Barševskis), 22 August 1992 (5, leg. A. Barševskis), 13 March 1993 (1, in hibernation place, leg. A. Barševskis), 4 April 1993 (3, leg. A. Barševskis); Kuldīga d.: Alsunga, 28 August 2005 (1, leg. A. Barševskis, A. Bukejs, U. Valainis); Liepāja d.: Rolava, 11 July 2006 (1, leg. A. Barševskis); Vērgale, 12 August 2008 (3, leg. A. Barševskis); Limbaži d.: Salacgrīva, 17 August 2008 (1, Veczemu rock, leg. A. Barševskis); Ludza d.: Bļāši, 10 August 2008 (2, meadow, leg. M. Balalaikins), 23 June 2009 (1, leg. M. Balalaikins); Salnava, 10 September 2009 (4, clearing, leg. M. Balalaikins); Madona d.: Aiviekste vill., 22 August 2006 (3, leg. A. Barševskis); Ezernieki house, Lubāna territory, 21 August 2008 (1, leg. A. Barševskis); Gaiziņkalns (hill), 5 km E Vestiena, 7 July 2006 (2, leg. A. Pankjāns, A. Barševskis, E. Rudāns); Krustkalni NR, 7 July 2006 (3, leg. A. Pankjāns, A. Barševskis, E. Rudāns); Sauleskalns hill, 7 July 2006 (2, leg. A. Pankjāns, E. Rudāns, A. Barševskis); Ogre d.: Ķegums, 11 July 2006 (1, left bank of the Daugava River, leg. A. Barševskis); Preiļi d.: Aglona, 3 June 2006 (1, leg. A. Pankjāns); Jersika, Kurpnieki house, 15 May 2005 (1, leg. A. Barševskis), 4 May 2006 (10, leg. A. Barševskis), 1–10 May 2009 (1, leg. K. Barševska, A. Barševskis), 14 June 2009 (1, leg. A. Barševskis, K. Barševska); Pelēči, 26 August 1997 (1, leg. I. Jurkjāne); Rēzekne d.: Gaigalava, 15 July 2009 (3, old clearing, leg. A. Bukejs, M. Balalaikins); Lake Galdacis env., 12 July 2008 (1, leg. A. Bukejs); Stalero-va, 29 July 2009 (3, near Lake Šostu, leg. M. Balalaikins); Teirumnieki, 15 July 2009 (1, clearing, leg. M. Balalaikins, A. Bukejs); Rīga: Rumbula, 21 March 1993 (1, leg. anonymous); Rīga d.: Baldone, 20 August 2008 (1, leg. A. Barševskis); Ķemeri, 2002 (1, leg. A. Barševskis); Saulkalne, 20 May 2006 (1, leg. A. Barševskis); Saulkrasti SW env., 19 July 2008 (5, seashore, on *Epilobium*, leg. A. Bukejs); Saulkrasti S env., Inčupe train station, 14 June 1974 (4, meadow, leg. anonymous); Talsi d.: N bank of Lake Engure, 30 April 1993 (1, leg. anonymous); Mazirbe, 29 June 2002 (1, leg. A. Barševskis); Slītere, 15 June 1979 (1, leg. V. Pūtele), 4 May 1998 (1, Malayse trap, leg. N. Savenkovs); Slītere NP, Zilie kalni (hills) and Davida pļavas (meadows), 13 September 2005 (1, leg. A. Barševskis); Tukums d.: Engure, 10 June 1977 (8, leg. V. Pūtele); Valka d.: Seda, Seda bog, 3 July 2006 (2, leg. A. Barševskis, U. Valainis, A. Pankjāns); Valmiera d.: Mazsalaca env., 57°34'58"N 25°20'15"E, 21 August 2006 (1, leg. A. Barševskis); Seda, Sedas bog, 3 July 2006 (5, leg. A. Barševskis, U. Valainis, A. Pankjāns); Ventspils d.: Moricsala Isl., Moricsala NR, 14 May 2004 (2, leg. A. Barševskis), 9 July 2004 (4, leg. A. Barševskis, U. Valainis); Puze, 15 June 1974 (1, cultivated meadow, leg. V. Melecis).
- Host plants:** *Epilobium*, *Oenothera* (Onagraceae), *Lyth-*

rum (Lythraceae), *Polygonum*, *Rumex* (Polygonaceae), *Cirsium* (Compositae), *Calluna* (Ericaceae).

Phenology: IV, V, VI, VII, VIII, IX, X.

General distribution: Europe, Asia Minor, Near East (Israel), the Caucasus, Iran, Kazakhstan, Central Asia (Kirghizstan), Mongolia, Siberia, the Russian Far East, N China, Korean Peninsula, Japan. [ASE]

Note: the most common species of the genus in Latvia.

A. palustris (Weise, 1888)

References: Brammanis 1930 (*Haltica*); Šmits 1962 (*Haltica*); Pūtele 1970, b, 1971a, b, 1974, 1980, 1981a, b (*Haltica*); Telnov *et al.* 1997; Telnov 2004; Kalniņš *et al.* 2007.

Examined material: 9 specimens: Aizkraukle d.: Jaunjelgava, 56°36'28"N 25°02'44"E, 11 August 2006 (1, leg. E. Rudāns, A. Barševskis); Daugavpils d.: Ilgas, Silene NP, 9 May 1996 (1, leg. A. Barševskis), June–July 2000 (2, leg. I. Haka, G. Hļebnaja); Stropi, 27 April 2008 (1, bank of Lake Lielais Stropu, leg. A. Bukejs); Vabole, 21 February 1997 (2, in hibernation place, leg. R. Cibuļskis); Krāslava d.: Izvalta, Murāni house, 21 August 1992 (1, leg. A. Barševskis); Rīga d.: Kūdra, 20 June 2006 (1, leg. A. Titovs).

Host plants: Lythraceae, Onagraceae (mostly on *Epilobium*).

Phenology: IV (3), V, VI, VII, VIII, IX, X (1).

General distribution: Europe, the Caucasus, N Africa, Asia Minor, Iran, Afghanistan, Kazakhstan, Central Asia. [CEM]

Note: rather infrequent species in Latvia.

A. helianthemi (Allard, 1859)

syn.: *A. potentillae* Allard, 1859; *A. pusilla* Duftschmid, 1825, nec Gyllenhal, 1813.

References: Pūtele 1968, 1970a, b, 1971a, b, 1974 (*Haltica pusilla* Duft.); Priedītis and Pūtele 1976 (*Haltica pusilla* Duft.); Barševskis 1993 (*Haltica*); Telnov *et al.* 1997 (*pusilla* Duft.); Telnov 2004; Kalniņš *et al.* 2007 (*pusilla* Duft.).

Examined material: not confirmed by the author.

Host plants: *Sanguisorba officinalis* (Rosaceae). In literature (Bieńkowski 2004), *Potentilla* (Rosaceae) and *Helianthemum* (Cistaceae) are also mentioned as host plants.

Phenology: V, VIII (3).

General distribution: Europe (excl. N), the Caucasus, Kazakhstan, Siberia. [SIE]

Note: a rare species in Latvia with few known localities. In Silfverberg's (2004) catalogue the species is listed as occurring in Estonia, Latvia and Lithuania.

A. impressicollis (Reiche, 1862)

References: Telnov *et al.* 2007.

Examined material: 1 specimen: Rīga d.: Sigulda, 12 July 2003 (1, leg. B. Ehnström).

Host plants: in literature (Bieńkowski 2004), *Eupatorium* (Compositae), *Lythrum* (Lythraceae), *Epilobium* (Onagraceae) are mentioned as host plants.

Phenology: VII.

General distribution: SE, E and C Europe, N Africa, Asia Minor, Near East (Israel, Syria), the Caucasus, Iraq, Iran. [TEM]

Note: a very rare species, known only from a single locality in central Latvia. In Fennoscandia and the eastern Baltic region this species is known only from Latvia. Recently it has been also recorded in the Kaliningrad region (Aleksiev & Bukejs (in press)).

A. longicollis (Allard, 1860)

syn.: *A. britteni* (Sharp, 1914); *A. sandini* (Kerner, 1919)

References: Palij 1958 (*Haltica britteni* Sharp); Pūtele 1970a, b, 1971a, b, 1974, 1980, 1981a, b (*Haltica britteni* Sharp); Priedītis and Pūtele 1976 (*Haltica britteni* Sharp); Barševskis 1993 (*Haltica britteni* Sharp); Telnov *et al.* 1997; Telnov 2004; Kalniņš *et al.* 2007; Spunģis 2008.

Examined material: 3 specimens: Daugavpils d.: Zaļumi, 2–16 September 2001 (1, leg. G. Lociks); Madona d.: Mētriņa, Teiču NR, 21 May (1, leg. A. Barševskis); Ventspils d.: Moricsala Isl., Moricsala NR, 14 May 2004 (1, leg. A. Barševskis).

Host plants: *Calluna vulgaris* (Ericaceae), *Empetrum nigrum* (Empetraceae).

Phenology: V, VI, IX.

General distribution: Europe (excl. S). [CEU]

Note: rather infrequent species in Latvia.

A. carinthiacea (Weise, 1888)

syn.: *A. daghestanica* Shapiro, 1970; *A. issykensis* Ogloblin, 1921

References: Pūtele 1970a, b, 1971a, b, 1974 (*Haltica*); Telnov *et al.* 1997; Telnov 2004.

Examined material: 109 specimens: Aizkraukle d.: Aizkraukle, 21 June 1995 (2, clearing, leg. A. Barševskis); Rīteri, 21 May 1991 (3, leg. A. Barševskis); Daugavpils d.: Bebrene, 30 April 2006 (1, leg. E. Rudāns), 4 May 2006 (1, leg. E. Rudāns), 13 May 2006 (3, leg. E. Rudāns), 18 June 2006 (1, leg. E. Rudāns); Butišķi, 26 May 2008 (1, valley of the Daugava River, leg. A. Bukejs); Daugavpils, Cietoksnis, 28 May 1993 (9, leg. A. Barševskis); Ilgas, Silene NP, June–July 2000 (4, leg. I. Haka, G. Hļebnaja), 14–20 June 2002 (2,

leg. A. Barševskis), June 2002 (2, leg. A. Barševskis), 6–15 June 2004 (1, leg. A. Barševskis), 18 May 2005 (2, leg. A. Barševskis), 10 May 2006 (2, leg. A. Barševskis), 17–20 June 2008 (1, leg. V. Krone, J. Staskeviča), 3 July 2008 (2, leg. V. Krone); Krauja, 29 May 2007 (1, old clearing, leg. A. Bukejs); Kurcums, near Lake Kurcums, 6 June 2008 (1, leg. A. Barševskis); Līksna, 21 October 1995 (1, in hibernation place, leg. R. Cibuļskis); Līksna parish, 3 km N Daugavpils, 27 July 2008 (1, clearing, leg. A. Bukejs); Lociki, 20 August 2001 (1, leg. G. Lociks); Īubaste E env., Daugavpils beltway, 16 June 2005 (1, leg. A. Bukejs); Naujene, 27 April 2007 (5, Jezupova park, leg. K. Aksjuta, M. Murd); Šarlote, 14 September 1991 (2, leg. A. Barševskis); Stropi, 9 July 2006 (1, old clearing, leg. A. Bukejs), 5 May 2008 (2, agrocenosis, leg. A. Bukejs); Vasarģelišķi, 29 April 2008 (1, leg. A. Pankjāns, U. Valainis); Gulbene d.: Lake Ušurs N bank, May–June 2003 (2, burning area in pine forest, window trap, leg. O. Koškina, A. Barševskis), 8 June 2005 (1, along marsh, leg. A. Barševskis), 11 August 2005 (1, leg. A. Barševskis); Jēkabpils d.: Dunava, 1 June 2002 (1, leg. A. Barševskis), 3 June 2007 (2, leg. A. Barševskis), 1–9 August 2007 (1, leg. K. Barševska); Gārsene, 10 August 2001 (1, leg. I. Leiskina); Leimaņi, Leimaņu parish, 14 August 2001 (3, leg. I. Leiskina); Rubeņi, 17 January 1997 (1, in hibernation place, leg. I. Leiskina), 8 December 1997 (1, in hibernation place, leg. I. Leiskina), 3 April 1997 (1, in hibernation place, leg. I. Leiskina), 17 January 1997 (1, in hibernation place, leg. I. Leiskina), 23 February 1997 (1, in hibernation place, leg. I. Leiskina), 29 December 1997 (1, in hibernation place, leg. I. Leiskina), 2 August 1998 (2, leg. I. Leiskina), 27 March 1999 (1, in hibernation place, leg. I. Leiskina), 2 August 1999 (2, leg. I. Leiskina); Zasa, 30 October 1998 (1, in hibernation place, leg. I. Leiskina), 28 July 2001 (1, leg. I. Leiskina); Jelgava d.: Jelgava S env., Baloži, 13 May 1973 (3, leg. V. Pūtele); Madona d.: Ezernieki house, Lubāna territory, 21 August 2008 (1, leg. A. Barševskis); Preiļi d.: Jersika, Kurpnieki house, 22 May 2005 (1, leg. A. Barševskis), 4 May 2006 (1, leg. K. Barševska), 26–28 May 2006 (1, leg. K. Barševska), 6–7 June 2006 (3, leg. A. Barševskis, K. Barševska), June 2006 (1, leg. A. Barševskis), 13 June 2008 (1, leg. A. Barševskis), 1–10 May 2009 (1, leg. K. Barševska, A. Barševskis); Talsi d.: Sabile, 4 August 1998 (2, meadow, leg. A. Barševskis); Rīga d.: Salaspils, 8 June 1998 (1, leg. M. Kalniņš); Valmiera d.: Briedes, 21 August 2006 (1, leg. A. Barševskis); Burtnieki, 14 April 1998 (1, in hibernation place, in rotten wood, leg. D. Grigorjeva); Mazsalaca, 27 August 2006 (1, leg. A. Barševskis); Tālava, 21 August 2006 (2, leg. A. Pankjāns, A. Barševskis); Ventpils d.: Moricsala Isl., Moricsala NR, 3–5 August 2002 (2, leg. U. Va-

lainis), June 2003 (1, window trap, leg. U. Valainis), September 2003 (1, window trap, leg. U. Valainis), 14 May 2004 (1, leg. A. Barševskis); ? d.: Lapu krogs, 1 May 1972 (1, leg. V. Pūtele); Pumpuri, 7 June 1971 (2, leg. V. Pūtele).

Host plants: *Lathyrus pratensis* (Fabaceae).

Phenology: IV (3), V, VI, VII, VIII, IX.

General distribution: Europe (the Pyrenees, the S Alps, the Balkans, the Netherlands, Germany, Poland, Latvia, Belarus, Scandinavia), the Caucasus, Central Asia (Kirghizstan, Uzbekistan; mts.), Siberia (Baikal env.), NW China (Xinjiang). [CAE]

Note: hitherto, this species has been known only from a single locality. In Silfverberg's (2004) catalogue the species is listed as occurring in Finland, Latvia and Norway. It is also known from Belarus (Lopatin & Nesterova 2005).

ACKNOWLEDGEMENTS

The author is grateful to Vitalij Alekseev, Anastasiya Pavlova (Kaliningrad, Russia), Kristīna Aksjuta, Alexander Anichtchenko, Maksims Balaļkins, Arvīds Barševskis, Raimonds Cibuļskis, Marina Janovska, Maris Nitcis, Ainārs Pankjāns, Uldis Valainis (all from Daugavpils University Institute of Systematic Biology, Daugavpils, LV), Katrīna Barševska, Iveta Leiskina (Daugavpils, LV), Nikolajs Savenkovs (Latvian Museum of Nature, Rīga, LV), Voldemārs Spunģis (LU Faculty of Biology, Rīga, LV), Aleksandrs Titovs (Rīga, LV), and students of Daugavpils University for the presented material. I express my sincere thanks to Manfred Döberl (Abensberg, Germany), Andrzej Warchałowski (Wrocław, Poland) and Hans-Erik Wanntorp (Vallentuna, Sweden) for valuable comments and presented material of *Altica* for comparison. The research has been carried out within the framework of the project of the European Social Fund (No 2009/0206/1DP/1.1.1.2.0/09/APIA/VIAA/010).

REFERENCES

- Alekseev, V. I. 2003. On fauna of leaf beetles (Coleoptera: Chrysomelidae) and seed beetles (Coleoptera: Bruchidae) of Kaliningrad region (Baltic coast). *Baltic Journal of Coleopterology* 3 (1): 63–75.
- Alekseev, V. and Bukejs, A. (in press) Contributions to the knowledge of beetles (Insecta: Coleoptera) in the Kaliningrad region. 2. *Baltic Journal of Coleopterology* 11.

- Baltiņš, O. 1899. *Mežu sargs jeb mežu aizsargātājs no iznīcināšanas caur kaitīgiem kukaiņiem*. Cēsis (in Latvian).
- Barševskis, A. 1993. *The Beetles of Eastern Latvia*. Saule: Daugavpils (in Latvian, English abstract).
- Barševskis, A. 2002. Vaboļu kārta (Coleoptera). In: A. Barševskis, N. Savenkovs, P. Evarts-Bunders, I. Daniele, G. Pētersons, V. Pilāts, E. Zviedre, D. Pilāte, M. Kalniņš, K. Vilks and A. Poppels (eds) *Silenes dabas parka fauna, flora un veģetācija*, pp. 37–60. Daugavpils: Baltijas Koleopteroloģijas institūts (in Latvian, English abstract).
- Bieńkowski, A. O. 2004. *Leaf-beetles (Coleoptera: Chrysomelidae) of the Eastern Europe. New key to subfamilies, genera and species*. Moscow: Mikron-print.
- Borowiec, L. 2004. *The Leaf Beetles (Chrysomelidae) of Europe and the Mediterranean Subregion (Checklist and Iconography)*. <http://www.biol.uni.wroc.pl/casidae/European%20Chrysomelidae/index.htm>. Last modification: 18 September 2008.
- Brammanis, L. 1930. Zur Kenntnis der Coleopterenfauna des Saatkampeschutzgrabens in der Oberforstei Intschukalms (Hinzenberg). *Folia zoologica et hydrobiologica* 2 (1): 129–135.
- Bukejs, A. 2008a. To the knowledge of flea beetles (Coleoptera: Chrysomelidae: Alticinae) in the fauna of Latvia. 1. Genus *Chaetocnema* Stephens, 1831. *Acta Zoologica Lituonica* 18 (3): 191–197.
- Bukejs, A. 2008b. To the knowledge of flea beetles (Coleoptera: Chrysomelidae: Alticinae) of Latvian fauna. 2. Genus *Phyllotreta* Chevrolat, 1836. *Acta Zoologica Lituonica* 18 (3): 198–206.
- Bukejs, A. 2009a. To the knowledge of flea beetles (Coleoptera: Chrysomelidae: Alticinae) of the fauna of Latvia. 3. Genera *Neocrepidodera* Heikertinger, 1911 and *Crepidodera* Chevrolat, 1836. *Acta Zoologica Lituonica* 19 (2): 109–119.
- Bukejs, A. 2009b. To the knowledge of flea beetles (Coleoptera: Chrysomelidae: Alticinae) of the Latvian fauna. 4. Genus *Aphthona* Chevrolat, 1836. *Acta Zoologica Lituonica* 19 (3): 223–230.
- Bukejs, A. 2009c. To the knowledge of flea beetles (Coleoptera: Chrysomelidae: Alticinae) of the Latvian fauna. 5. Genus *Psylliodes* Latreille, 1829. *Latvijas Entomologs* 47: 6–15.
- Bukejs, A. 2009d. New data on little-known flea beetles (Coleoptera: Chrysomelidae: Alticinae) in the fauna of Latvia. *Baltic Journal of Coleopterology* 9 (2): 161–175.
- Bukejs, A. 2010. To the knowledge of flea beetles (Coleoptera: Chrysomelidae: Alticinae) of the Latvian fauna. 6. Genus *Longitarsus* Latreille, 1829. *Acta Biologica Universitatis Daugavpiliensis* 10 (1): 53–70.
- Bukejs, A. and Telnov, D. 2007. Materials about the fauna of beetles (Insecta: Coleoptera) of Naujene rural municipality (Daugavpils district, Latvia). Part 2. *Acta Biologica Universitatis Daugavpiliensis* 7 (2): 191–208.
- Čížek, P. and Doguet, S. 2008. *Klíč k určování dřepčičků (Coleoptera: Chrysomelidae: Alticinae)*. *Česka a Slovenska*. Městské muzeum nové město nad metují.
- Döberl, M. 2010. Alticinae. In: I. Löbl and A. Smetana (eds) *Catalogue of Palaearctic Coleoptera* 6: 491–563. Stenstrup: Apollo Books.
- Fischer, J. B. 1784. Zusätze zu einem ‘Versuch einer Naturgeschichte von Livland’. In: J. J. Febers (ed.) *Anmerkungen zur physischen Erdbeschreibung von Kurland, nebst J. B. Fischers Zusätzen zu einem Versuch einer Naturgeschichte von Livland*. Riga: XVI + 305.
- Fischer, J. B. 1791. *Versuch einer Naturgeschichte von Livland*. 2 Auflage. Königsberg: Friedrich Nicolobius.
- Groschke, J. 1805. Merkwürdigkeiten aus dem Tierreich. In: E. Derschau and P. Keyserlingk (eds) *Beschreibungen der Provinz Kurland Hergs*, pp. 119–176. Mitau.
- Gruev, B. and Döberl, M. 1997. General Distribution of the Flea Beetles in the Palaearctic Subregion (Coleoptera, Chrysomelidae: Alticinae). *Scopolia* 37: 1–496.
- Hayashi, M., Morimoto, K. and Kimoto, Sh. (eds) 1984. *The Coleoptera of Japan in Color*. Volume IV. Japan: Hoikusha Publishing Co. (in Japanese).
- Kalniņš, M., Juceviča, E., Karpa, A., Salmāne, I., Poppels, A. and Telnovs, D. 2007. Invertebrates. In: V. Pilāts (ed.) *Biodiversity in Gauja National Park*, pp. 106–149. Sigulda: Gauja National Park Administration.
- Kangas, E. and Rütanen, I. 1993. Identification of females of the Finnish species of *Altica* Müller (Coleoptera, Chrysomelidae). *Entomologica Fennica* 4: 115–129.
- Lindberg, Håk. 1926. Die ostfennoskandischen Arten der Gattung *Haltica* Geoffr. (Col., Chrysom.). *Notulae Entomologicae* 6: 65–78.
- Lopatin, I. K. 1977. *Leaf-beetles (Chrysomelidae) of Central Asia and Kazakhstan*. Leningrad: Nauka. [Лопатин, И. К. 1977. Жуки-листоеды (Chrysomelidae) Средней Азии и Казахстана. Ленинград: Наука.]
- Lopatin, I. K. 1986. *Leaf-beetles of Belarus and eastern Baltia*. Minsk: Vishejschaja shkola. [Лопатин, И. К. 1986. Жуки-листоеды фауны Белорусии и Прибалтики: Определитель. Минск: Вышэйшая школа.]
- Lopatin, I. K. and Kulenova, K. Z. 1986. *Leaf-beetles (Coleoptera, Chrysomelidae) of Kazakhstan*. Alma-Ata: Nauka. [Лопатин, И. К., Куленова, К. З. 1986. Жуки-листоеды (Coleoptera, Chrysomelidae) Казахстана: Определитель. Алма-Ата: Наука.]
- Lopatin, I. K. and Nesterova, O. L. 2005. *Insects of Belarus: Leaf-Beetles (Coleoptera, Chrysomelidae)*. Minsk: Tekhnoprint (in Russian, English abstract).

- Medvedev, L. N. 1992. Leaf beetles – Chrysomelidae. In: *Keys to Insects of the Far East of the SSSR. 3. Coleoptera 2*: 533–602. Sankt-Petersburg: Nauka. [Медведев, Л. Н. 1992. Листоеды – Chrysomelidae. В кн.: *Определитель насекомых Дальнего Востока СССР. Том 3. Жесткокрылые или жуки. Часть 2*: 533–602. Санкт-Петербург: Наука.]
- Medvedev, L. N. and Dubeshko, L. N. 1992. *Keys to leaf-beetles of Siberia*. Irkutsk: University of Irkutsk. [Медведев, Л. Н., Дубешко, Л. Н. 1992. *Определитель листоедов Сибири*. Иркутск: изд-во Иркутского университета.]
- Mohr, K. H. 1966. Chrysomelidae. In: H. Freude, K. Harde and G. Lohse (eds) *Die Käfer Mitteleuropas*. Band 9, *Cerambycidae und Chrysomelidae*, pp. 95–280. Krefeld: Goecke & Evers.
- Palij, V. F. 1958. On the fauna and biocenology of Latvian flea beetles (Coleoptera, Chrysomelidae, Halticinae). *Proceedings of the Institute of Biology of the Latvian SSR Academy of Sciences* 5: 69–89. [Палий, В. Ф. 1958. О фауне и биоценологии земляных блошек Латвии (Coleoptera, Chrysomelidae, Halticinae). *Труды Института биологии Академии наук Латвийской ССР* 5: 69–89.]
- Pileckis, S. and Monsevičius, V. 1997. *Fauna of Lithuania: Beetles, 2*. Vilnius: Publishing House of Encyclopaedias and Scientific Literature. [Pileckis, S., Monsevičius, V. 1997. *Lietuvos Fauna. Vabalai, 2*. Vilnius: Mokslo ir enciklopedijų leidybos institutas.]
- Precht, K. 1818. *Verzeichnis der bis jetzt, vornehmlich in der Umgegend von Riga und im Rigischen Kreise bekannt gewordenen und systematisch bestimmten käferartigen Insecten (Coleoptera Linnaei, Eleutherata Fabricii)*. Riga: D. Müller.
- Priedītis, A. and Pūtele, V. 1976. Leaf-beetles (Coleoptera, Chrysomelidae) in agrocenoses of apple in Zemgale plain of Latvia. *Abstracts of reports of the scientific practical conference 'Ways of implementation of progressive methods for the protection of agricultural plants, 28–30 June 1976'*: 96–98. Rīga: Rīga Polytechnical Institute Press. [Приедитис, А., Путеле, В. 1976. *Тезисы докладов научно-практической конференции 'Пути внедрения прогрессивных методов защиты растений в с. х. производство 28–30 июня 1976 г.'*: 96–98. Рига: Типогр. РПИ.]
- Pūtele, V. 1968. New species of flea beetles in Latvia. *Abstracts of reports of the 6th Conference on Baltic Plant Protection*: 114–115. Tartu: Estonian Academy of Agriculture. [Путеле, В. О. 1968. Новые виды земляных блошек в Латвии. *Тезисы докладов VI научной конференции Прибалтийских республик по защите растений*: 114–115. Тарту: Эстонская сельскохозяйственная академия.]
- Pūtele, V. 1970a. Species composition of flea beetles of the Latvian SSR. In: *The materials of the 7th Conference on Baltic Plant Protection, Jelgava* 1: 17–20. [Путеле, В. О. 1970. Видовой состав земляных блошек в Латвийской ССР. В кн.: *Материалы 7-го Прибалтийского совещания по защите растений* 1: 17–20. Елгава.]
- Pūtele, V. 1970b. *Research on the fauna and ecology of flea beetles (Coleoptera, Chrysomelidae, Halticinae) of the Latvian SSR*. Abstract of doctoral thesis in Biological Sciences. Jelgava. [Путеле, В. О. 1970. *Исследования по фауне и экологии земляных блошек (Coleoptera, Chrysomelidae, Halticinae) Латвийской ССР*. Автореферат диссертации, представленной на соискание учёной степени кандидата биологических наук. Елгава.]
- Pūtele, V. 1971a. Flea beetles of genera *Haltica* Fabr. and *Chalcoides* Foudr. in Latvia. *Latvijas Lauksaimniecības akadēmijas raksti* 42: 87–94. [Путеле, В. О. 1971. Земляные блошки родов *Haltica* Fabr. и *Chalcoides* Foudr. в Латвийской ССР. *Latvijas Lauksaimniecības akadēmijas raksti* 42: 87–94.]
- Pūtele, V. 1971b. Flea beetle fauna in Latvian SSR. *XIII International Congress of Entomology, Moscow, 2–9 August, 1968. Proceedings* 1: 189–190. Leningrad: Nauka.
- Pūtele, V. 1974. Leaf-beetles (Coleoptera, Chrysomelidae) discovered in the surroundings of Jelgava city. In: *The brief reports of a scientific conference on protection of plants. Saku, 2–4 1974* (2): 55–58. Tallinn. [Путеле, В. О. 1974. Листоеды (Coleoptera, Chrysomelidae), выявленные в окрестностях города Елгава. В: *Краткие доклады научной конференции по защите растений, Саку, 2–4 1974* 2: 55–58. Таллин.]
- Pūtele, V. 1980. Lapgraužu (Coleoptera, Chrysomelidae) faunas pētījumi Slīteres valsts dabas rezervātā. *Slīteres rezervāta 1 zinātniski praktiskā konference, referātu tēzes*. Slītere: 18–21 (in Latvian).
- Pūtele, V. 1981a. Studies on the leaf-beetle (Coleoptera, Chrysomelidae) fauna of the Slītere State Nature Reserve. *Latvijas Lauksaimniecības akadēmijas raksti* 188: 12–19. [Путеле, В. О. 1981. Исследование фауны листоедов (Coleoptera, Chrysomelidae) государственного заповедника «Слитере». *Latvijas Lauksaimniecības akadēmijas raksti* 188: 12–19.]
- Pūtele, V. 1981b. Studies on the leaf-beetle fauna of the Slītere State Nature Reserve: reports. *Mežsaimniecība un mežrūpniecība* 3: 42–44 (in Latvian).
- Pūtele, V. 1982. Pested leaf-beetles (Coleoptera, Chrysomelidae) of the Latvian SSR. *Latvijas Lauksaimniecības akadēmijas raksti* 200: 28–33. [Путеле, В. О. 1982. Вредные листоеды (Coleoptera, Chrysomelidae)

- Латвийской ССР. Труды Латвийской сельскохозяйственной академии 200: 28–33 (Борьба с вредителями и болезнями картофеля, плодовоовощных и полевых культур.]
- Pūtele, V. 1984. Leaf-beetles – pests of tree cultures in the Slītere State Nature Reserve. *Latvijas Lauksaimniecības akadēmijas raksti* 213: 9–15 (in Russian).
- Rathlef, H. 1905. *Coleoptera Baltica. Käfer-Verzeichnis der Ostseeprovinzen nach den Arbeiten von Ganglbauer und Reitter*. Dorpat: C. Mattiesen.
- Romantsov, P. V. 2007. A review of leaf beetles (Coleoptera, Chrysomelidae) of St. Petersburg and Leningrad province. *Entomological Review* 86 (2): 306–336. [Романцов, П. В. 2007. Обзор жуков-листоедов (Coleoptera, Chrysomelidae) Санкт-Петербурга и Ленинградской области. *Энтомологическое обозрение* 86 (2): 306–336.]
- Rupais, A. 1962. *Kokaugu kaitēkļu noteicējs pēc bojājumiem*. Rīga: LPSR Zinātniskās Akadēmijas izdevniecība (in Latvian).
- Sahlberg, J. 1913. Till kändedomen om *Haltica Engströmi* och dess biologi. *Entomologisk Tidskrift* 34: 261–270.
- Seidlitz, G. 1872–1875. *Fauna Baltica. Die Käfer (Coleoptera) der Ostseeprovinzen Russlands*. Dorpat: H. Laakmann.
- Seidlitz, G. 1887–1891. *Fauna Baltica. Die Käfer (Coleoptera) der deutschen Ostseeprovinzen Russlands. 2 Auflage*. Königsberg: Hartungsche Verlagsdruckerei.
- Silfverberg, H. 2004. Enumeratio nova Coleopterorum Fennoscandiae, Daniae et Baltiae. *Sahlbergia* 9: 1–111.
- Spunģis, V. 2008. *Fauna and ecology of terrestrial invertebrates in raised bogs in Latvia*. Rīga: Petrovskis & Co.
- Spuris, Z. 1974. Cietspārni jeb vaboles – Coleoptera. In: Z. Spuris (ed.) *Latvijas dzīvnieku pasaule*, pp. 139–151. Rīga: Liesma (in Latvian).
- Stiprais, M. and Varzinska, R. 1985. The beetles in the pig-breeding farm at Jumprava. *Latvijas Entomologs* 28: 18–31 (in Latvian).
- Šmits, V. 1962. New beetle species in Latvian fauna. *Latvijas Entomologs* 5: 51–52. [Šmits, V. 1962. Jaunas sugas Latvijas vaboļu faunai. *Latvijas Entomologs* 5: 51–52.]
- Telnov, D. 2004. Check-List of Latvian Beetles (Insecta: Coleoptera). In: D. Telnov (ed.) *Compendium of Latvian Coleoptera* 1: 1–114. Rīga: Petrovskis & Co.
- Telnov, D., Barševskis, A., Savich, F., Kovalevsky, F., Berdnikov, S., Doronin, M., Cibulskis, R. and Ratniece, D. 1997. Check-List of Latvian Beetles (Insecta: Coleoptera). *Mitteilungen des Internationalen Entomologischen Vereins*, Supplement V: 1–140.
- Telnov, D., Bukejs, A., Gailis, J., Kalniņš, M., Napolov, A. and Sörensson, M. 2007. Contributions to the knowledge of Latvian Coleoptera. 6. *Latvijas Entomologs* 44: 47–54.
- Trauberga, O. 1957. Coleoptera – vaboles. In: *Latvijas PSR dzīvnieku noteicējs* 1: 455–592. Rīga: Latvijas Valsts izdevniecība (in Latvian).
- Ulanowski, A. 1883. Z fauny coleopterologicznej Inflant Polskich. *Sprawozdanie Komisji Fizyjograficznej* 18: 1–60.
- Vigna-Taglianti, V. A., Audisio, P. A., Biondi, M., Bologna, M. A., Carpaneto, G. M., De Biase, A., Fattorini, S., Piattella, E., Sindaco, R., Venchi, A. and Zapparoli, M. 1999. A proposal for a chorotype classification of the Near East fauna, in the framework of the Western Palaearctic region. *Biogeographia* 20: 31–59.
- Warchałowski, A. 2003. *The leaf-beetles (Chrysomelidae) of Europe and the Mediterranean region*. Warszawa: Natura optima dux Foundation.

APIE LATVIJOS SPRAGES (COLEOPTERA: CHRYSOMELIDAE: ALTICINAE). 7. GENTIS ALTICA GEOFFROY, 1762

A. Bukejs

SANTRAUKA

Straipsnyje apibendrinta informacija apie Latvijos spragių *Altica* Geoffroy, 1762 fauną. Pateikiami faunistiniai duomenys apie dešimt šios genties rūšių. *Altica ampelophaga* Guérin-Méneville, 1858 išbraukta iš Latvijos vabalų sąrašo. Bibliografinė informacija apie šią Latvijos spragių gentį apibendrinama pirmą kartą. Pateikiamos autentiškos visų Latvijos faunai priklausančių *Altica* rūšių patelių genitalijų nuotraukos bei anotuotas 14 Latvijos *Altica* rūšių sąrašas.

Received: 7 February 2011
Accepted: 24 February 2011