

Leaf-beetles *Oulema septentrionis* (Weise, 1880) and *O. erichsonii* (Suffrian, 1841) (Coleoptera: Chrysomelidae) in Latvian fauna

Andris Bukejs

Bukejs A. 2010. Leaf-beetles *Oulema septentrionis* (Weise, 1880) and *O. erichsonii* (Suffrian, 1841) (Coleoptera: Chrysomelidae) in Latvian fauna. *Baltic J. Coleopterol.*, 10(1): 65 - 69.

In this paper faunal data on two leaf-beetles species, *O. septentrionis* (Weise, 1880) and *O. erichsonii* (Suffrian, 1841), are presented. *O. septentrionis* (Weise, 1880) is reported from Latvia first time. The figures of the aedeagus with flagellum of these species and general information on their distribution and ecology are given.

Key words: Coleoptera, Chrysomelidae, *Oulema septentrionis*, *Oulema erichsonii*, Latvia, aedeagus, flagellum.

Andris Bukejs. Institute of Systematic Biology, Daugavpils University, Vienības 13, Daugavpils, LV-5401, Latvia. E-mail: carabidae@inbox.lv

INTRODUCTION

The genus *Oulema* Gozis, 1886 contains approximately 15 species distributed in Holarctic and Ephiopian region (Barney et al. 2008; Lopatin, Nesterova 2005; Schmitt 1988). Six species are known from eastern Europe (Bieńkowski 2004).

Four species of *Oulema* are hitherto registered from Latvia (Bukejs 2009; Telnov 2004). While *Oulema septentrionis* (Weise, 1880) has been considered as a separate species from *O. erichsonii* (Suffrian, 1841) (Mohr 1985; Warchałowski 1985, 2003; Kippenberg, Döberl 1994; Bieńkowski 2004), this has not been reported for Latvian fauna.

In this paper faunal data on two leaf-beetles species, *O. septentrionis* (Weise, 1880) and *O. erichsonii* (Suffrian, 1841), are presented. *O. septentrionis* (Weise, 1880) is reported from

Latvia for the first time. The figures of the aedeagus with flagellum of these species are given.

MATERIAL AND METHODS

The examined material is deposited in the collection of Daugavpils University, Institute of Systematic Biology (DUBC, Daugavpils, Latvia).

For preparation of maximum inflated internal sac of aedeagus was used Berlov's (1992) method. The internal sac was filled up with tooth paste using syringe and was dried by a glow-lamp.

The photographs were taken using a *Zeiss Stereo Discovery V12* stereomicroscope and an *AxioCam* digital camera.

RESULTS AND DISCUSSION

Externally, *Oulema septentrionis* (Weise, 1880) is very similar to *Oulema erichsonii* (Suffrian, 1841). These two species authentically differ only by the shapes of aedeagus apex and flagellum. A revision of the Latvian material, based on male genitalia, revealed two different aedeagus and flagellum types.

The first, interpreted as representatives of *O. erichsonii* (Suffrian, 1841): lamella of aedeagus is elongate, narrower, more or less pointed, in lateral view apex is S-shaped, bent upwards (Fig. 1); apex of flagellum is blunt and more wide (Fig. 4), generally flagellum is S-shaped (used the study of inflated internal sac of aedeagus) (Fig. 6).

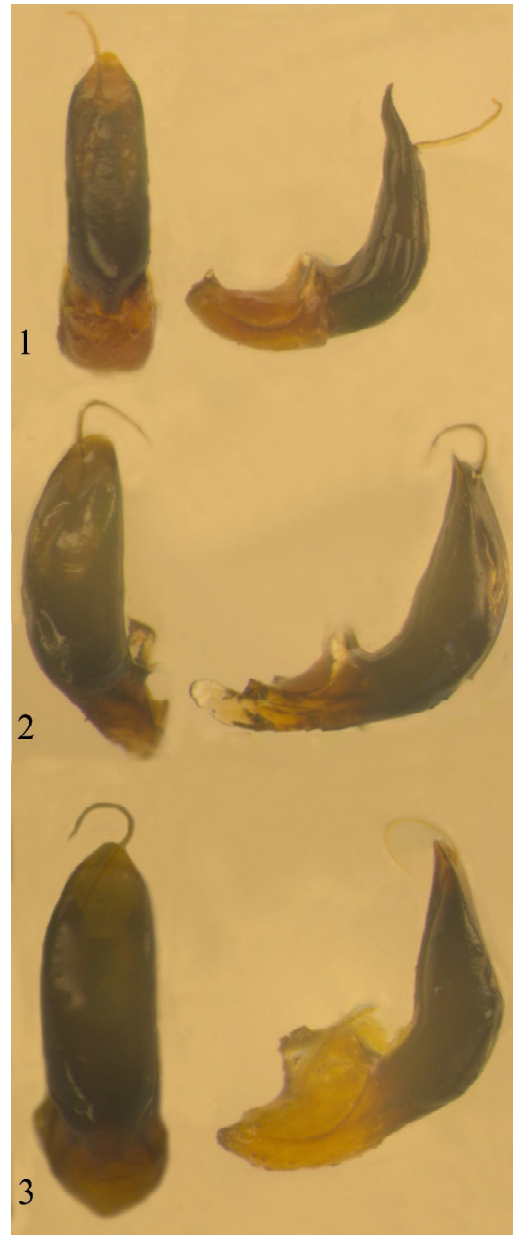
The second, interpreted as representatives of *O. septentrionis* (Weise, 1880): lamella of aedeagus is short, wider, widely or angularly-rounded, in lateral view apex is feebly bent downwards (Figs. 2 and 3); apex of flagellum is sharp and thin (Fig. 5), generally flagellum is C-shaped (used the study of inflated internal sac of aedeagus) (Fig. 7).

Oulema erichsonii (Suffrian, 1841)

Examined material: 6 exx: Daugavpils district: Kalnišķi, 55°52'54"N 26°44'03"E, 21.VIII.2009 (1, bank of the Daugava River, leg. A.Bukejs, M.Balalaikins); Gulbene district: Gulbītis, 05.VIII.2004 (1, bank of Lake Ušūrs, leg. A.Barševskis, U.Valainis), 08.VI.2005 (1, leg. A.Barševskis); Rēzekne district: Puša, 27.V.2002 (1, leg. A.Barševskis); Talsi district: Mazirbe, 24.VII.2004 (1, leg. A.Barševskis); Slītere National Park, 22.VIII.2008 (1, leg. A.Barševskis).

Oulema septentrionis (Weise, 1880)

Examined material: 19 exx: Daugavpils district: Bebrene, 30.IX.2006 (1, leg. E.Rudāns); bank of the Daugava River opposite Krauja, 55°54'51"N 26°40'39"E, 19.VI.2009 (1, leg. R.Cibuļskis); Naujene, 27.IV.2008 (1, Jezufova park, leg. K.Aksjuta, M.Murd), 29.IV.2008 (1, valley of the Daugava River, leg. A.Pankjāns, U.Valainis); Elerne, 31.V.2007 (1, leg. M.Murd); Višķi, IX.1990

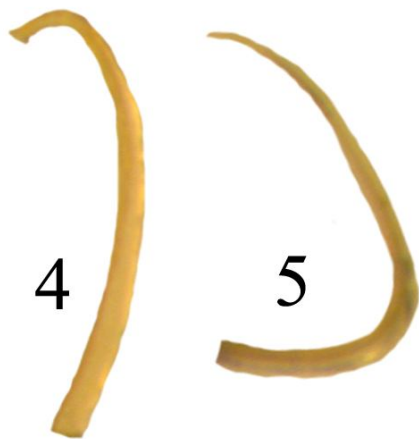


Figs. 1-3. Aedeagus, dorsal and lateral aspects: 1 – *Oulema erichsonii*, 2 and 3 – *O. septentrionis*.

(1, leg. A.Barševskis); Jēkabpils district: Dunava, 17.VII.1995 (1, leg. A.Barševskis), 13.VIII.1996 (1, leg. A.Barševskis), 01-07.VI.2009 (1, leg. K.Barševska); Krāslava district: Indrica, 17.VI.1989 (1, leg. A.Barševskis); Izvalta, Murāni

house, 21.VIII.1992 (2, leg. A.Barsevskis);
Piedruja, 28.V.1991 (1, leg. A.Barsevskis);
Šķeltova, 09.V.1993 (1, leg. A.Barševskis),

20.V.1995 (1, humid meadow, leg. A.Barševskis);
Ūdrīši, Tartaks, VIII.2008 (1, leg. A.Soldāns); Preiļi
district: Jersika, Kurpnieki house, 04.V.2006 (1,
leg. K.Barševska), 04.VI.2006 (1, leg.
K.Barševska); Rēzekne district: Ideņa env.,
56°44'38"N 26°55'11"E, 06.VII.2008 (1, bank of
Lake Lubāns, leg. A.Bukejs, M.Balalaikins).



Figs. 4-5. Apex of flagellum: 4 – *Oulema erichsonii*,
5 – *O. septentrionis*

Earlier faunal reports of *O. erichsonii* (Suffrian,
1841) in Latvia (Pūtele 1974, 1980, 1981, 1981a;
Barševskis 1988, 1993, 2002; Telnov 2002; Kalniņš
et al. 2007; Bukejs, Telnov 2007; Bukejs 2009)
probably is related to *O. septentrionis* (Weise,
1880).

Recently *O. septentrionis* (Weise, 1880) was
confirmed in Sweden, Denmark and Norway
(Wanntorp 2009). In Sweden, records of *O.*
septentrionis (Weise, 1880) were done in humid
meadows while *O. erichsonii* (Suffrian, 1841)
seems to prefer dry habitats.



Figs. 6-7. Apex of aedeagus with inflated internal sac: 6 – *Oulema erichsonii*, 7 – *O. septentrionis*.

The precise distribution of these species must be defined more exactly because of the former confusion. After Bieńkowski (2004), *O. septentrionis* (Weise, 1880) is distributed in W Europe, Caucasus and Russian Far East (Khabarovsk region) but *O. erichsonii* (Suffrian, 1841) is distributed in Europe, Siberia and Russian Far East.

This complex is in need of revision including type specimens and material from the entire area of distribution.

ACKNOWLEDGEMENTS

The author is grateful to the colleagues Kristīna Aksjuta, Maksims Balalaikins, Arvīds Barševskis, Raimonds Cibulskis, Marina Janovska, Ainars Pankjāns, Arvis Soldāns and Uldis Valainis (all – Daugavpils University Institute of Systematic Biology, Daugavpils, Latvia) for the provided material.

Special thanks are given to Alexander Anichtchenko (Daugavpils University Institute of Systematic Biology, Daugavpils, Latvia) for the help in preparation of maximum inflated internal sac of aedeagus.

I express my sincere thanks to Andrzej O. Bieńkowski (Moscow, Russia), Horst Kippenberg (Herzogenaurach, Germany), Hans-Erik Wanntorp (Vallentuna, Sweden) and Andrzej Warchalowski (Wrocław, Poland) for valuable comments and constructive advice.

The research has been done within the framework of the project of European Social Fund (No 2009/0206/1DP/1.1.1.2.0/09/APIA/VIAA/010)

REFERENCES

- Barney R.J., Clark S.M., Riley E.G. 2008. Annotated List of the Subfamilies Donaciinae and Criocerinae (Coleoptera: Chrysomelidae). *Journal of the Kentucky Academy of Science*, 69 (1): 29–36.
- Barševskis A. 1988. Faunal investigations on beetles in various habitats of the south-eastern part of Latvia. In: *Ekologischesko vospitanie v srednej i vyssej shkole*. Daugavpils, DPI: 63–75. [in Russian].
- Barševskis A. 1993. *The Beetles of Eastern Latvia*. Saule, Daugavpils: 1–221. [in Latvian, English abstract]
- Barševskis A. 2002. Coleoptera. In: Barševskis A., Savenkovs N., Evarts-Bunders P., Daniele I., Pētersons G., Pilāts V., Zviedre E., Pilāte D., Kalniņš M., Vilks K., Poppels A. (eds.) *Fauna, flora and vegetation of Silene Nature Park*. Baltijas Koleopteroloģijas institūts, Daugavpils: 37-60. [in Latvian]
- Berlov O. 1992. Preparati permanenti a secco dell endofallo nel genere *Carabus* L. (Coleoptera, Carabidae). *Bollettino della Societa entomologica italiana*, 124 (2): 141–143. [in Italian]
- Bieńkowski A.O. 2004. *Leaf-beetles (Coleoptera: Chrysomelidae) of the Eastern Europe. New key to subfamilies, genera and species*. Moscow, Mikron-print: 1–278.
- Bukejs A. 2009. Faunal data on leaf-beetles subfamilies Criocerinae and Clytrinae (Coleoptera: Chrysomelidae) in Latvia. In: Oļehnovičs D. (ed.) *Proceedings of the 50th International Scientific Conference of Daugavpils University. Nature*. Daugavpils, Saule: 23–30.
- Bukejs A., Telnov D. 2007. Materials about the fauna of beetles (Insecta: Coleoptera) of Naujene rural municipality (Daugavpils district, Latvia). Part 2. *Acta Biologica Universitatis Daugavpiliensis*, 7 (2): 191–208.
- Kalniņš, M., Juceviča, E., Karpa, A., Salmane, I., Poppels, A. and Telnovs, D. 2007. Invertebrates. In: Pilāts V. (ed.) *Biodiversity in Gauja National Park*: 106-149 pp. Sigulda, Gauja National Park Administration: 1–224.

- Kippenberg H., Döberl M. 1994. Familie: Chrysomelidae. In: *Ergänzungen und Berichtigungen zu Freude-Harde-Lohse "Die Käfer Mitteleuropas" 9 (1966). 3 Supplementband*. Goecke & Evers, Krefeld: 17–144.
- Lopatin I.K., Nesterova O.L. 2005. *Insecta of Byelarus: Leaf-Beetles (Coleoptera, Chrysomelidae)*. Minsk, Tehnoprint: 1–293. [in Russian, English abstract]
- Mohr K.H. 1985. Beiträge zu Insektenfauna der DDR: Coleoptera – Chrysomelidae: Donacinae, Orsodacninae, Criocerinae, Clytrinae. *Beiträge zu Entomologie*, 35 (2): 219–262.
- Pütele V. 1974. Leaf-beetles (Coleoptera, Chrysomelidae) discovered in the surroundings of Jelgava city. In: *Brief reports of a scientific conference on the protection of plants. Saku, 2–4 1974* (2), Tallinn: 55–58. [in Russian]
- Pütele V. 1980. Lapgraužu (Coleoptera, Chrysomelidae) faunas pētījumi Slīteres valsts dabas rezervātā. *Slīteres rezervāta I. zinātniski praktiskā konference, referātu tēzes*. Slītere: 18–21. [in Latvian]
- Pütele V. 1981. Studies on leaf-beetles (Coleoptera, Chrysomelidae) fauna of the Slītere State Nature Reserve. *Latvijas Lauksaimniecības akadēmijas raksti*, 188: 12–19. [in Russian]
- Pütele V. 1981a. Studies on Leaf-beetles fauna of the Slītere State Nature Reserve: reports. *Mežsaimniecība un mežrūpniecība*, 3: 42–44. [in Latvian]
- Schmitt M. 1988. The Criocerinae: Biology, Phylogeny and Evolution. In: Jolivet P., Pettitpierre E., Hsiao T.H. (eds.) *Biology of Chrysomelidae*. Kluwer Academic Publishers: 475–495.
- Silfverberg H. 2004. Enumeratio nova Coleopterorum Fennoscandiae, Daniae et Baltiae. *Sahlbergia*, 9: 1–111.
- Telnov D. 2002. To the knowledge of Latvian Coleoptera. 2. *Latvijas Entomologs*, 39: 16–19.
- Telnov D. 2004. Check-List of Latvian Beetles (Insecta: Coleoptera). In: Telnov D. (ed.) *Compendium of Latvian Coleoptera, vol. 1*. Rīga, Pertovskis & Co: 1–114.
- Wanntorp H.-E. 2009. Swedish leaf beetles: *Oulema septentrionis* (Weise, 1880) and *Cryptocephalus bameuli* Duhaldebordé, 1999, two newly identified species in the Nordic fauna (Coleoptera, Chrysomelidae). *Entomologisk Tidskrift*, 130 (1): 37–42.
- Warchałowski A. 1985. Chrysomelidae. Stonkowate (Insecta: Coleoptera). 1. *Fauna Polski*, 10. Warszawa: Państwowe Wydawnictwo Naukowe: 1–273.
- Warchałowski A. 2003. *The leaf-beetles (Chrysomelidae) of Europe and the Mediterranean region*. Warszawa, Natura optima dux Foundation: 1–600.

Received: 10.03.2010.

Accepted: 20.05.2010.



a Sofia & Moscow based Scientific Publishers and Booksellers
are pleased to offer more than 10 000 titles in natural history and other
branches of science browseable and searchable at Pensoft Online
Bookshop's address:

www.pensoft.net

We are always keen to discuss possibilities for publishing your manu-
scripts in taxonomy and faunistics of insects.

PENSOFT have been launched by scientists for the scientists!

PENSOFT Publishers
Geo Milev Str., No 13a
1111 Sofia, Bulgaria

Tel: +359 2 716451
Fax: + 359 2 704508

E-mail: pensoft@mbox.infotel.bg

PENSOFT Online Bookshop
<http://www.pensoft.net>