

See discussions, stats, and author profiles for this publication at: <https://www.researchgate.net/publication/332366596>

# Transitional fossils illuminate early evolution of the ant-like stone beetle tribe Leptomastacini (Coleoptera: Staphylinidae: Scydmaeninae)

Article in *Journal of Systematic Palaeontology* · April 2019

DOI: 10.1080/14772019.2019.1584924

CITATIONS

0

READS

92

4 authors, including:



Zi-Wei Yin

Shanghai Normal University

232 PUBLICATIONS 291 CITATIONS

[SEE PROFILE](#)



De-Yao Zhou

Shanghai Normal University

16 PUBLICATIONS 6 CITATIONS

[SEE PROFILE](#)



Chenyang Cai

Nanjing Institute of Geology and Palaeontology, Chinese Academy of Sciences

124 PUBLICATIONS 913 CITATIONS

[SEE PROFILE](#)

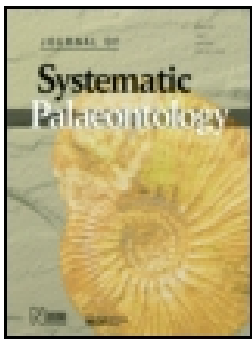
Some of the authors of this publication are also working on these related projects:



Beetles in deep time and more [View project](#)



Mesozoic Beetles [View project](#)




## Transitional fossils illuminate early evolution of the ant-like stone beetle tribe Leptomastacini (Coleoptera: Staphylinidae: Scydmaeninae)

Zi-Wei Yin, De-Yao Zhou, Chen-Yang Cai & Alfred F. Newton

To cite this article: Zi-Wei Yin, De-Yao Zhou, Chen-Yang Cai & Alfred F. Newton (2019): Transitional fossils illuminate early evolution of the ant-like stone beetle tribe Leptomastacini (Coleoptera: Staphylinidae: Scydmaeninae), *Journal of Systematic Palaeontology*, DOI: 10.1080/14772019.2019.1584924

To link to this article: <https://doi.org/10.1080/14772019.2019.1584924>

 View supplementary material 

 Published online: 11 Apr 2019.

 Submit your article to this journal 

 View Crossmark data 



# Transitional fossils illuminate early evolution of the ant-like stone beetle tribe Leptomastacini (Coleoptera: Staphylinidae: Scydmaeninae)

Zi-Wei Yin<sup>a\*</sup>, De-Yao Zhou<sup>a</sup>, Chen-Yang Cai<sup>b,c\*</sup> and Alfred F. Newton<sup>d</sup>

<sup>a</sup>Department of Biology, College of Life and Environmental Sciences, Shanghai Normal University, Shanghai, 200234, China; <sup>b</sup>CAS Key Laboratory of Economic Stratigraphy and Palaeogeography, Nanjing Institute of Geology and Palaeontology, and Center for Excellence in Life and Palaeoenvironment, Chinese Academy of Sciences, Nanjing 210008, China; <sup>c</sup>School of Earth Sciences, University of Bristol, Life Sciences Building, Tyndall Avenue, Bristol BS8 1TQ, UK; <sup>d</sup>Center for Integrative Research, Field Museum of Natural History, Chicago, Illinois 60605, USA

(Received 26 September 2018; accepted 11 February 2019)

The ant-like stone beetle supertribe Mastigitae (Staphylinidae: Scydmaeninae) comprises nine extant and five extinct genera that exhibit unusual morphological specializations and ecological adaptations. Recent discoveries of mastigitae fossils from Upper Cretaceous–middle Eocene deposits have significantly improved our knowledge of the evolutionary history of this group, yet a direct fossil record for two modern tribes of unclear affinities, i.e. Leptomastacini and Papusini, is lacking. Herein we describe a new genus and species, †*Archemastax divida* gen. et sp. nov., based on two well-preserved individuals entombed in mid-Cretaceous Burmese amber (c. 99 Ma), representing the earliest known representative of Leptomastacini. †*Archemastax* possesses both plesiomorphic and derived characters, with a few important traits shared with extant members of Papusini and Clidicini. A data set of 70 morphological characters scored for 29 species of Mastigitae was analysed using maximum parsimony and Bayesian inference; both analyses recovered a sister relationship between †*Archemastax* and extant leptomastacines. However, in the former analysis Leptomastacini was recovered as sister to the remaining Mastigitae, while the latter indicated an origin of Leptomastacini from within Clidicini. Although a close affinity between †*Archemastax* and Papusini was not supported by our analyses, similarities in some shared characters of these two groups are discussed.

<http://zoobank.org/urn:lsid:zoobank.org:pub:BB17DF86-25FC-48B5-8AFB-1DB27328280F>

**Keywords:** evolution; transitional form; Mastigitae; Burmite; mid-Cretaceous

## Introduction

The supertribe Mastigitae of the subfamily Scydmaeninae constitutes a small group of ant-like stone beetles, represented by some 100 species classified in nine extant and five extinct genera (Jałoszyński 2016a; Jałoszyński *et al.* 2018). The members of this group have received extensive attention from modern taxonomists and systematists because of their unusual morphological specializations and ecological adaptations, as well as highly disjunctive distributions. Some African members are known to occur in dense populations, actively patrolling and copulating in open habitats by day (Jałoszyński *et al.* 2015), while others in North America inhabit a desert environment and are active during the nights in the hottest season of the year (O’Keefe 2003). One group (Mastigini) occurs disjunctively in the Mediterranean region and South Africa (Leleup 1968; Bordoni & Castellini 1973),

raising questions on what factors might have shaped their current distribution.

Five tribes were recently proposed after a comprehensive morphology-based phylogenetic analysis (Jałoszyński *et al.* 2018), which was followed shortly by a morphological revision of all genera (Jałoszyński 2018). These studies provided much clarity on some otherwise previously poorly known groups and offered a sound base for future descriptions of new taxa in a phylogenetic context. The evolutionary history of Mastigitae has evidently become a subject of major interest following continuing discoveries of a large number of extinct taxa from the mid-Cretaceous Burmese and middle–upper Eocene Baltic and Rovno ambers (Jałoszyński 2012, 2016b; Cai & Huang 2016; Jałoszyński & Perkovsky 2016; Jałoszyński *et al.* 2017; Yin *et al.* 2017a, b, 2018b). From these discoveries, we are able to safely conclude that some of the modern tribes, such as Mastigini and Clidicini, had an ancient

\*Corresponding authors. Email: [pselaphinae@gmail.com](mailto:pselaphinae@gmail.com); [cycail@nigpas.ac.cn](mailto:cycail@nigpas.ac.cn)

origin dating back at least to the lowermost Cenomanian (*c.* 99 Ma), when many morphological specializations of these groups were already evidently analogous, if not homologous, to those of their modern relatives.

Among all mastigitae tribes, two are of particular interest with regard to their unusual morphology and elusive phylogenetic positions. The tribe Leptomastacini is represented by 30 species and subspecies grouped in three extant genera, inhabiting mostly cryptic environments (e.g. subterranean) in the Western Palaearctic region. Morphological characters reflecting their peculiar lifestyle include the flattened habitus, strongly reduced (or absent) compound eyes and functional wings. In *Leptomastax* Pirazzoli, 1855 the head appears to be strongly transverse, with extremely elongate, falciform mandibles lacking subapical teeth, but with dense oblique rugae on the cutting edge (Castellini 1996). This was suggested to be associated with their specialized predatory behaviour in narrow spaces between soil particles (Jałoszyński 2018). The other tribe, Papusini, stands as one of the most enigmatic groups within Mastigitae. A single genus and nine species inhabiting desert environments occur in the south-western United States and north-western Mexico. Members were observed to run on sand during the night and were collected under small volcanic rocks during the day, suggesting a nocturnal lifestyle (O’Keefe 2003). The most distinct morphological specialization of this group is their large eyes which are diagnostic for this group, but it remains untested whether this trait is correlated with their unusual habits.

Although the monophyly of Leptomastacini was strongly supported in all previous phylogenetic analyses, the inter-tribal relationships among Mastigitae are inadequately resolved, with deeper nodes frequently receiving low statistical support (Jałoszyński *et al.* 2018). This is probably due to the fragmentary knowledge of extant diversity resulting in an inadequate sampling of taxa, as well as the inclusion of many fossil taxa that lack the majority of morphological information. The placement of Papusini is particularly unstable, given that the mosaic of characters occurring in this group are shared with different tribes (Jałoszyński 2018), and whether these characters are homologous or not remains an open question. Herein we describe a new extinct genus and species probably belonging to the stem lineage of Leptomastacini, from the upper Albian–lower Cenomanian Burmese amber. The new taxon exhibits both plesiomorphic and derived characters, with some of them shared with Papusini and Clidicini. Our discovery of such a transitional form adds an important piece of evidence towards understanding the palaeodiversity and morphological disparity of the Mastigitae, especially

since it may be of particular importance for understanding the early evolution of Leptomastacini.

## Material and methods

### Material

The holotype (NIGP168713) is deposited in the Nanjing Institute of Geology and Palaeontology, Chinese Academy of Sciences, Nanjing, China (NIGP); the paratype (SNUC-Paleo-0044) is housed in the Insect Collection of Shanghai Normal University, Shanghai, China (SNUC). The fossil specimens described here were obtained from amber deposits in the Hukawng Valley of Kachin, northern Myanmar (26°21′33.41″N, 96°43′11.88″E; Cruickshank & Ko 2003; Grimaldi & Ross 2017). Maps showing the amber-yielding locality and the amber forest 99 mya were provided in Kania *et al.* (2015) and Yin *et al.* (2018a). The age of Burmese amber, once widely regarded as Eocene (Chhibber 1934), has been recently established as earliest Cenomanian (98.79 ± 0.62 Ma) based on U-Pb dating of zircons (Shi *et al.* 2012), which agrees with a general age predicted by Grimaldi *et al.* (2002) based on key bioinclusions. Nevertheless, other workers have suggested slightly older ages, either within the late Albian (Cruickshank & Ko 2003; Ross *et al.* 2010) or near the Albian–Cenomanian boundary (Rasnitsyn *et al.* 2016; Mao *et al.* 2018).

Two extant species of Leptomastacini were examined for morphological comparisons. This material is deposited in SNUC. Their label data are quoted verbatim here, with different labels separated by a slash:

*Leptomastax stussineri* Reitter, 1880: 1 ex., ‘CROATIA: Istra, Limski kanal, 20 m, 13.iv.2009, sifting in forest, P. Hlaváč lgt./*Leptomastax stussineri* Reitter, P. Hlaváč det., 2009’.

*Ablepton treforti* Frivaldszky, 1877: 2 exs, ‘ROMANIA, Mtii. Mehedinti, Motru Sec., pest. Lazului env., 9–10.5.2015, V. Zieris lgt./*Ablepton treforti* Frivaldszky, P. Hlaváč det., 2017’.

### Methods

The holotype and paratype were cut using a handheld engraving tool and polished using sandpapers of different grits and rare earth polishing powder. Pictures of the fossil were made using either a Canon EOS 5D Mark III digital camera, equipped with a Canon MP-E 65 mm macro lens (F2.8, 1–5×) and an attached Canon MT-24EX twin flash as light source, or using a Zeiss Axio

Imager 2 light microscope with an attached digital camera under fluorescence microscopy. Scanning electron micrographs of extant species were produced using a Hitachi SU8010 Field Emission Scanning Electron Microscope. Montage images were produced in Zerene Stacker (version 1.04) and all images were optimized and grouped in Adobe Photoshop CS5 Extended.

### Phylogenetic analyses

To test the phylogenetic position of the new fossil taxon within Mastigitae, we incorporated the new material into a previously published data set (Jałoszyński *et al.* 2018). A total of 70 non-additive and unordered adult morphological characters were included. These comprise the 69 characters scored in Jałoszyński *et al.* (2018) and one additional character (character 69: modified broadened setae on mouthparts). Characters denoted with an asterisk (\*) were modified in definition or in coding for a few taxa (Supplementary material, S1). Inapplicable character states are indicated by en dashes (–), and missing data are indicated by question marks (?). The data matrix was assembled in WinClada v. 1.00.08 (Nixon 2002); characters are numbered starting from 0 as required by TNT (Supplementary material, S2).

Parsimony analysis was conducted in TNT v. 1.5-beta (Goloboff & Catalano 2016) under implied weighting (default weighting function  $K = 3$ ) using the ‘Implicit enumeration’ strategy; the collapsing rule was switched to ‘rule 1’. Standard bootstrap and Bremer support values were also calculated in TNT. Character mapping on the strict consensus tree was made in WinClada v. 1.00.08 (Nixon 2002). The morphological data matrix and the character list and character states are presented in Supplementary material S1 and S2. Bayesian analysis was performed using MrBayes 3.2.6 (Ronquist *et al.* 2012) under the Mk model. The search consisted of two Markov chain Monte Carlo (MCMC) runs of two chains and was terminated at 10,000,000 generations. Convergence was determined by the standard deviation of split frequencies having dropped below 0.0075, and further verified by estimated sample sizes higher than 200 in Tracer v. 1.6 (Rambaut *et al.* 2013), indicating sufficient estimation of the posterior. The first 25% of trees were discarded as burn-in. The consensus tree of both MCMC runs was rooted on *Euaesthetus ruficapillus* (Lacordaire). The Nexus file used for this analysis is available as Supplementary material S3. All trees were optimized and annotated in FigTree v. 1.4.3, Adobe Illustrator CS5 and Adobe Photoshop CS5 Extended.

### Systematic palaeontology

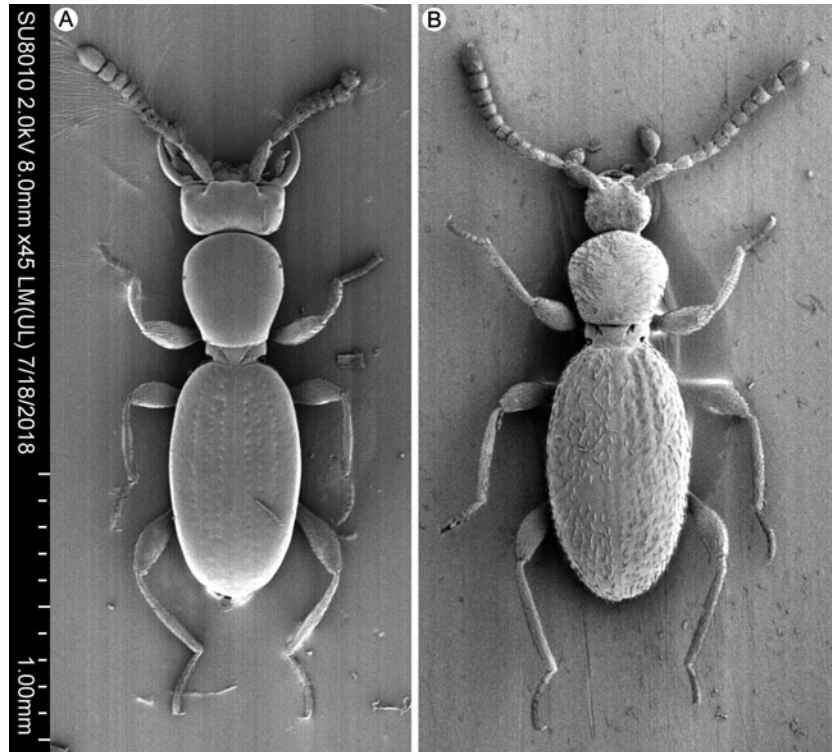
Family **Staphylinidae** Latreille, 1802  
 Subfamily **Scydmaeninae** Leach, 1815  
 Supertribe **Mastigitae** Fleming, 1821  
 Tribe **Leptomastacini** Casey, 1897  
 Genus †*Archemastax* gen. nov.

**Type species.** †*Archemastax divida* sp. nov. (here designated).

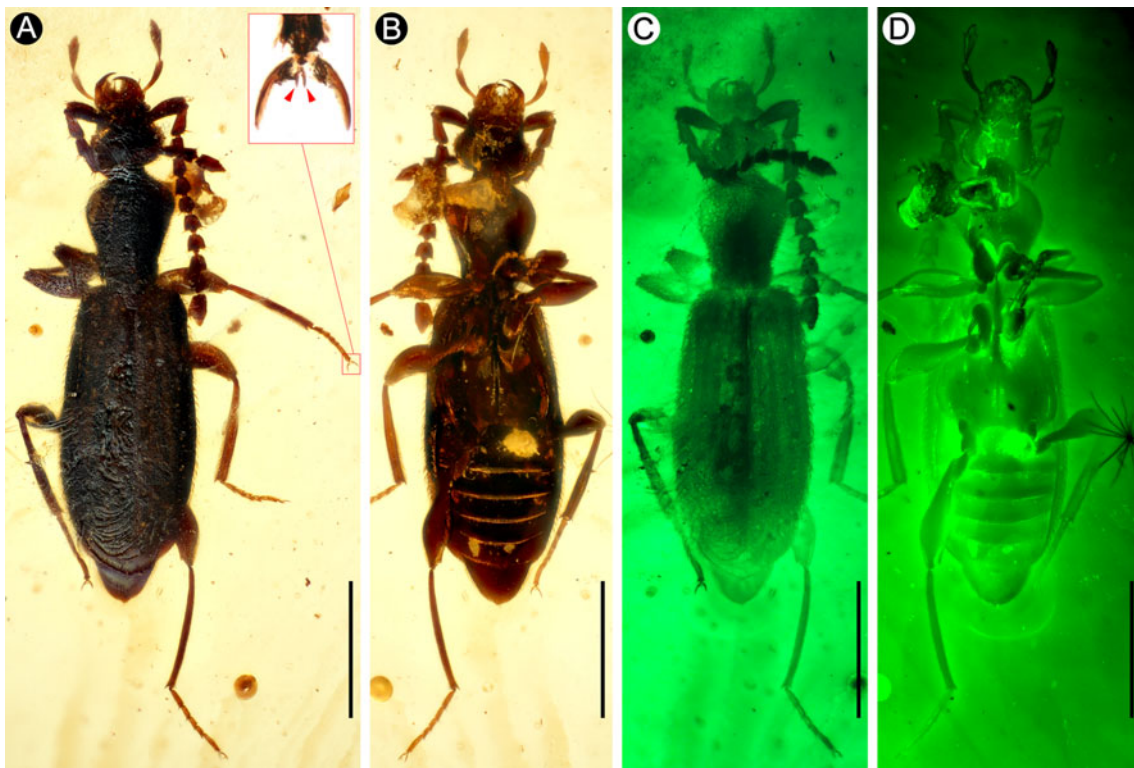
**Generic diagnosis.** †*Archemastax* can be separated from all extant leptomastacine genera by the following combination of characters: (1) head dorsum, mouthparts and antennae with modified, thickened setae; (2) maxillary palpomeres III–IV clearly demarcated, not forming a compact oval club; (3) distal margin of palpomere III and basal margin of IV straight and truncate, non-oblique; (4) palpomere IV slightly longer than wide; (5) elytra with regular longitudinal rows of large punctures; (6) metathoracic wings fully developed; (7) anterior margin of prosternite, and meso- and metaventrite lacking leaf-like broadened setae; (8) metaventrite with distinct median longitudinal carina; and (9) mesocoxa with row of elongate thickened bristles.

**Description.** Body (Figs 2, 5A, B) small, length slightly over 1.5 mm, reddish-brown, flattened, dorsally finely setose; modified setae distributed mostly on antennae and head, either elongately spatulate or short to very long and thickened, distributed mostly on antennae and head.

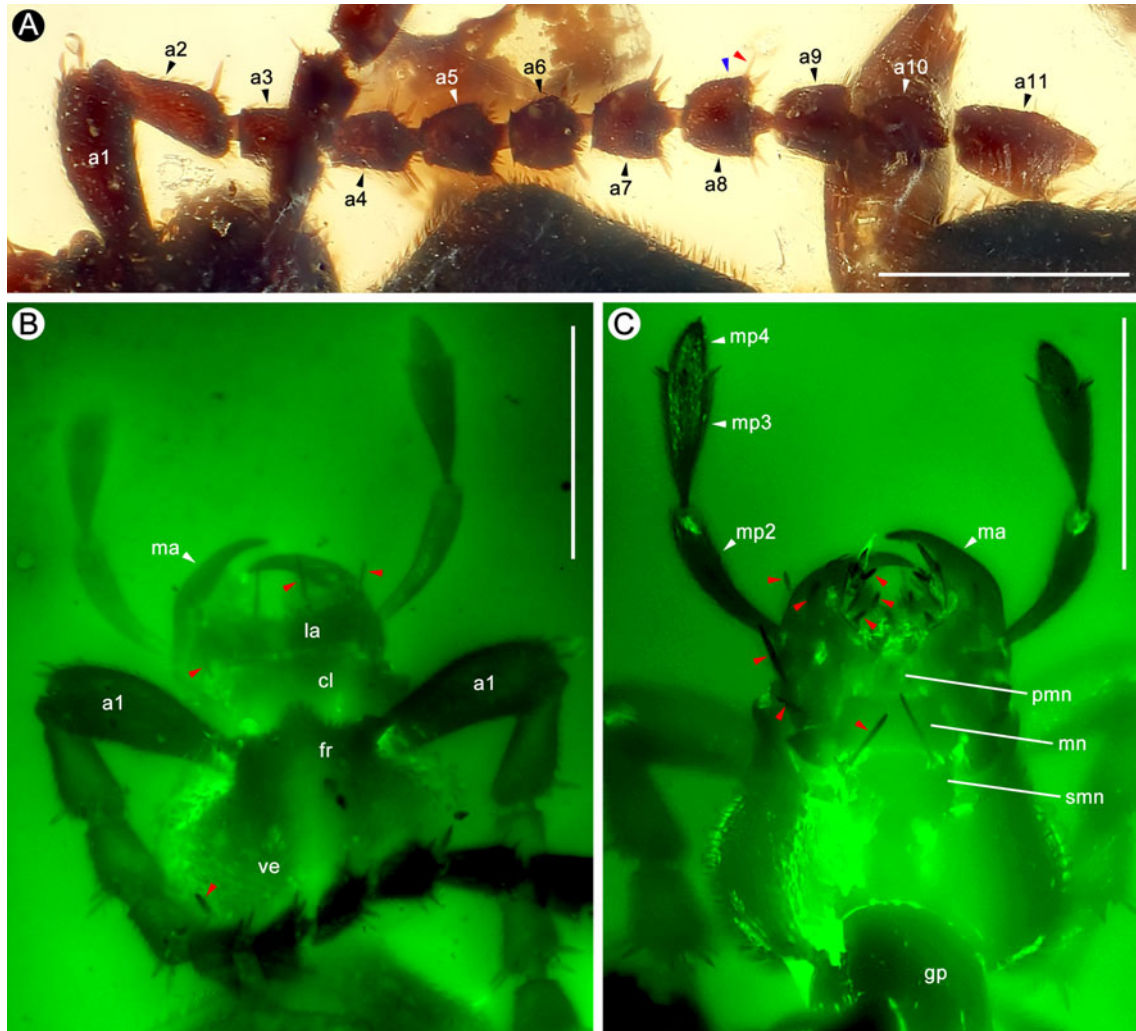
Head capsule (Figs 1, 2C, 5B; *h*) divided into large and exposed anterior part and much smaller, rounded and flattened ‘neck’ region retracted into prothorax and demarcated by distinct occipital constriction; ‘neck’ region about as broad as half width of head. Anterior part of head flattened and slightly broader than long, roundly triangular in shape, with rounded sides of vertex, narrower than pronotum and broadest near posterior margin. Compound eyes (Fig. 5D; *ce*) dorsolateral, oval, large, located at posterior half of head, roundly projecting laterally, each eye composed of about 30 small facets (ommatidia). Vertex (Fig. 3B; *ve*) strongly transverse and weakly, evenly convex, with posterior margin straight or nearly straight at middle and a pair of long, thickened posterolateral setae (Figs 3B, 5D). Tempora long and rounded. Frons (Fig. 3B; *fr*) between antennal insertions subtriangular, anteriorly demarcated by deep and narrow frontoclypeal groove. Clypeus (Fig. 3B; *cl*) short and broad, with rounded sides appearing to slightly project behind external margin of each mandibular base, with one elongate, thickened seta on each side. Antennal insertions located dorsally in sub-median area of head. Gular plate (Fig. 3C; *gp*) lacking sutures.



**Figure 1.** Extant representatives of Leptomastacini. **A**, *Leptomastax stussineri*; **B**, *Ablepton treforti*.



**Figure 2.** Habitus of †*Archemastax divida*, holotype (NIGP168713). **A–D**, dorsal (**A**, **C**) and ventral (**B**, **D**) habitus with standard lighting (**A**, **B**) and fluorescent lighting (**C**, **D**). Scale bars = 0.5 mm.

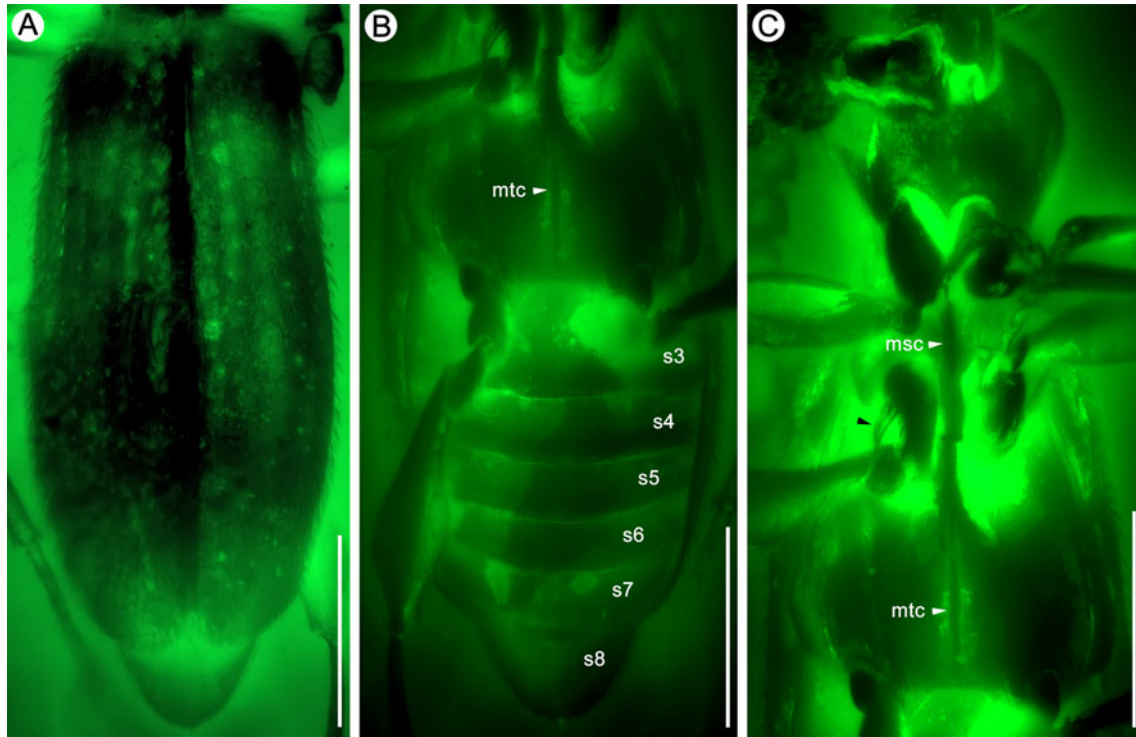


**Figure 3.** Morphological details of †*Archemastax divida* gen. et sp. nov., holotype (NIGP168713). **A**, antenna; **B**, **C**, head, in dorsal (B) and ventral (C) views. Blue arrow indicates normal pubescence, and red arrows indicate modified spatulate/thickened setae. **Abbreviations:** a1–11, antennomeres I–XI; cl, clypeus; fr, frons; gp, gular plate; la, labrum; ma, mandible; mp2–4, maxillary palpomeres II–IV; mn, mentum; pmn, prementum; smn, submentum; ve, vertex. Scale bars = 0.2 mm.

Antennae (Figs 3A, 5A; *ant*) much shorter than body; scape (Fig. 3A, B; *a1*) about 2.5 times as long as broad; pedicel (Fig. 3A; *a2*) distinctly longer than antennomere III and evenly broadening from narrow base to apex; antennomeres III–IV (Fig. 3A; *a3–4*) slightly elongate, V–X (Fig. 3A; *a5–10*) mostly transverse and weakly thickening distally, each with narrow and short basal stalk; antennomere XI (Fig. 3A; *a11*) elongate and slightly asymmetrical. Antennomeres covered with dense and evenly distributed short and thin setae (Fig. 3A; indicated by blue arrow) and much longer, strongly flattened and broadened spatulate setae around distal margin of each antennomere except XI (Fig. 3A; indicated by red arrow).

Labrum (Fig. 3B; *la*) strongly transverse, with broadly concave anterior margin; dorsal surface with two long

and thickened setae at each side. Mandibles (Fig. 3B, C; *ma*) symmetrical, each subtriangular but relatively slender, with broad base and long, curved and moderately sharp apical tooth, with one elongate thickened seta on ventral surface. Maxilla (Fig. 3C) with large but relatively short cardo; stipes elongate, with one elongate thickened seta, demarcated from lacinia and galea, which bear dense row of distally thickened setae; palpi—broad and elongate, with one elongate thickened seta at apicolateral margin; maxillary palpus composed of minute palpomere I, elongate and distally broadened palpomeres II–III (Fig. 3C; *mp2–3*), and short and conical palpomere IV (Fig. 3C; *mp4*); base of palpomere IV clearly narrower than base of palpomere III; all palpomeres finely setose, only apex of III with longer and thicker lanceolate setae around apex. Labium (Fig. 3C)



**Figure 4.** Morphological details of †*Archemastax divida* gen. et sp. nov., holotype (NIGP168713). **A**, elytra; **B**, metaventre and abdomen; **C**, prosternum and meso- and metaventre. Arrow indicates row of thickened setae on mesocoxa. **Abbreviations:** *msc*, median mesoventral carina; *mtc*, median metaventral carina; *s3–8*, sternites III–VIII. Scale bars = 0.3 mm.

with broad submentum (Fig. 3C; *smn*) posteriorly not demarcated from gular region, bearing pair of long and thickened setae near its anterior margin; mentum (Fig. 3C; *mn*) sub-trapezoidal and strongly transverse, with anterior margin slightly concave; prementum (Fig. 3C; *pmn*) sub-trapezoidal, broadest distally, lacking demarcated ligula, with broadly separated bases of labial palpi; labial palpus (Fig. 5C; *lp*) composed of three palpomeres: palpomere I small, elongated, palpomere II large, strongly elongated and slightly broadening distad, palpomere III narrow and pointed, about as long as II; palpomere I has one and palpomere II has two modified thickened setae (Figs 3C, 5C) near apex.

Prothorax flattened and elongate, broadest near anterior two-fifths. Pronotum (Figs 1A, C, 5B; *p*) with all margins rounded or sides in posterior half nearly straight; anterior corners broadly rounded, posterior corners indistinct, obtuse-angled; pronotal base apparently lacking pits, impressions, grooves or carinae. Prosternum (Fig. 3C) with basisternal part more than twice as long as coxal part, laterally completely fused with hypomera, notosternal sutures not visible in both specimens. Coxal region demarcated anteriorly by carina extending laterally up to apices of subtriangular adcoxal hypomerall lobes projecting mesally. Procoxal cavities

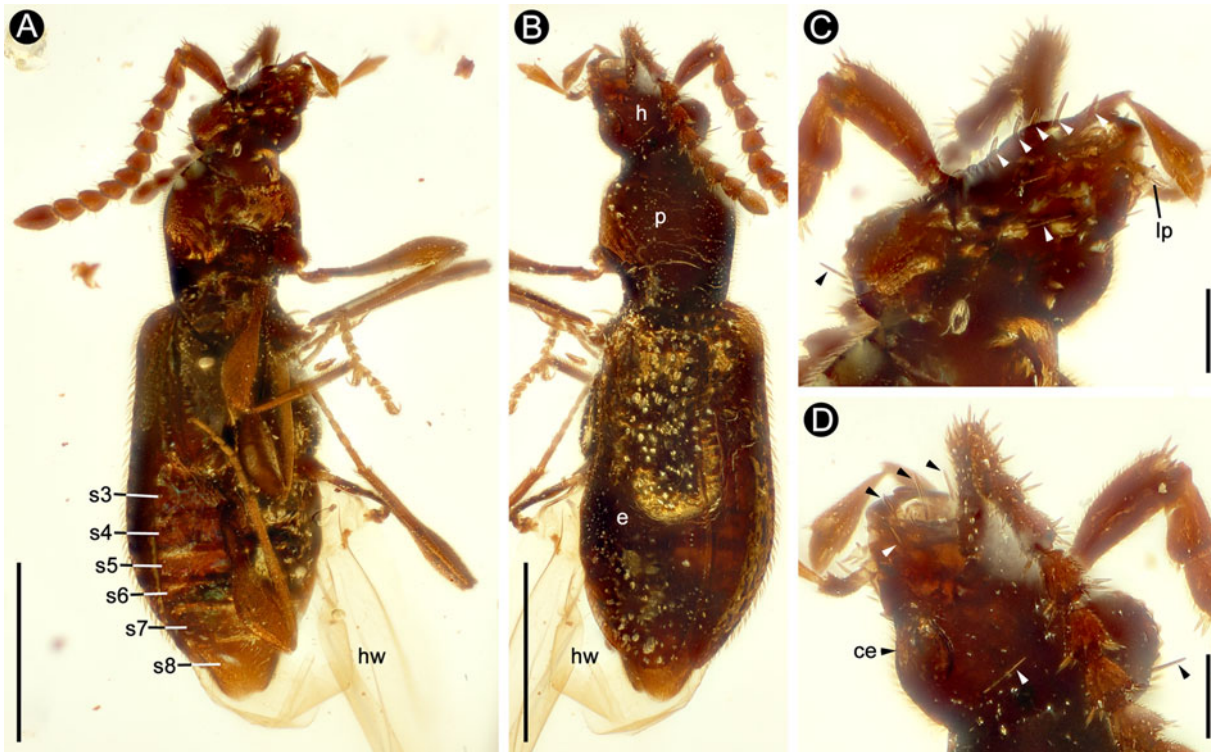
broadly open. Ventral surface of prothorax largely a-setose and glabrous; lacking leaf-like setae.

Mesoventrite (Fig. 4C) sub-trapezoidal, broadening posteriorly, lacking strongly flattened, leaf-like setae. Mesoventral intercoxal process long, narrow and weakly convex but distinctly carinate (Fig. 4C; *msc*) at middle, fully separating mesocoxae, weakly but distinctly narrowing posteriorly and fused with metaventre. Metanotum with fully developed hind wings (Fig. 5A, B; *hw*). Metaventre (Fig. 4B, C) short, sub-quadrangle, with lateral margins rounded; mesocoxal cavities with marginal carina encompassing each cavity nearly entirely; posterior margin with broad metaventral intercoxal carina (Fig. 4B, C; *mtc*), lacking foveae and leaf-like setae.

Elytra (Figs 4A, 5B; *e*) oval, flattened, humeral calli and basal impressions indistinct or lacking, with rounded apices; elytral disc with distinct large and deep punctures arranged in nearly complete longitudinal rows.

Legs moderately long, slender. Pro- and mesocoxa elongately subconical, metacoxa with nearly hemispherical basal part and subconical distal part. Mesocoxa with three to four long and thickened coxal bristles (Fig. 4C, indicated by black arrow). All trochanters short and sub-triangular. Femora weakly clavate. Tibiae robust, all nearly straight. Tarsi short but slender, sub-cylindrical,





**Figure 5.** †*Archemastax divida* gen. et sp. nov., paratype (SNUC-Paleo-0044). **A, B**, ventral (A) and dorsal (B) habitus; **C, D**, head, in ventrolateral (C) and dorsolateral (D) views. Arrows show modified thickened setae. **Abbreviations:** ant, antenna; ce, compound eye; e, elytra; h, head; hw, hind wing; lp, labial palpus; p, pronotum; s3–8, sternites III–VIII. Scale bars: A, B = 0.5 mm; C, D = 0.1 mm.

tarsomeres decreasing in length but not in width from I to IV, tarsomere V strongly elongate. Claws of all tarsi curved, directed and divergent distally; empodium with pair of short, thickened setae (Fig. 2A, indicated by red arrows).

Abdomen (Figs 4B, 5A; s3–8) with sternite III not fused with metaventricle, about as long as sternites IV and V together, sternites VI–VII each about as long as V, sternite VIII 1.5 times as long as VII, with rounded posterior margin; sternite III lacking leaf-shaped setae at base.

**Etymology.** The generic name is a combination of Greek ‘arkhe’ (beginning, origin), and ‘mastax’ (mouth, jaws). The gender of the new genus is feminine.

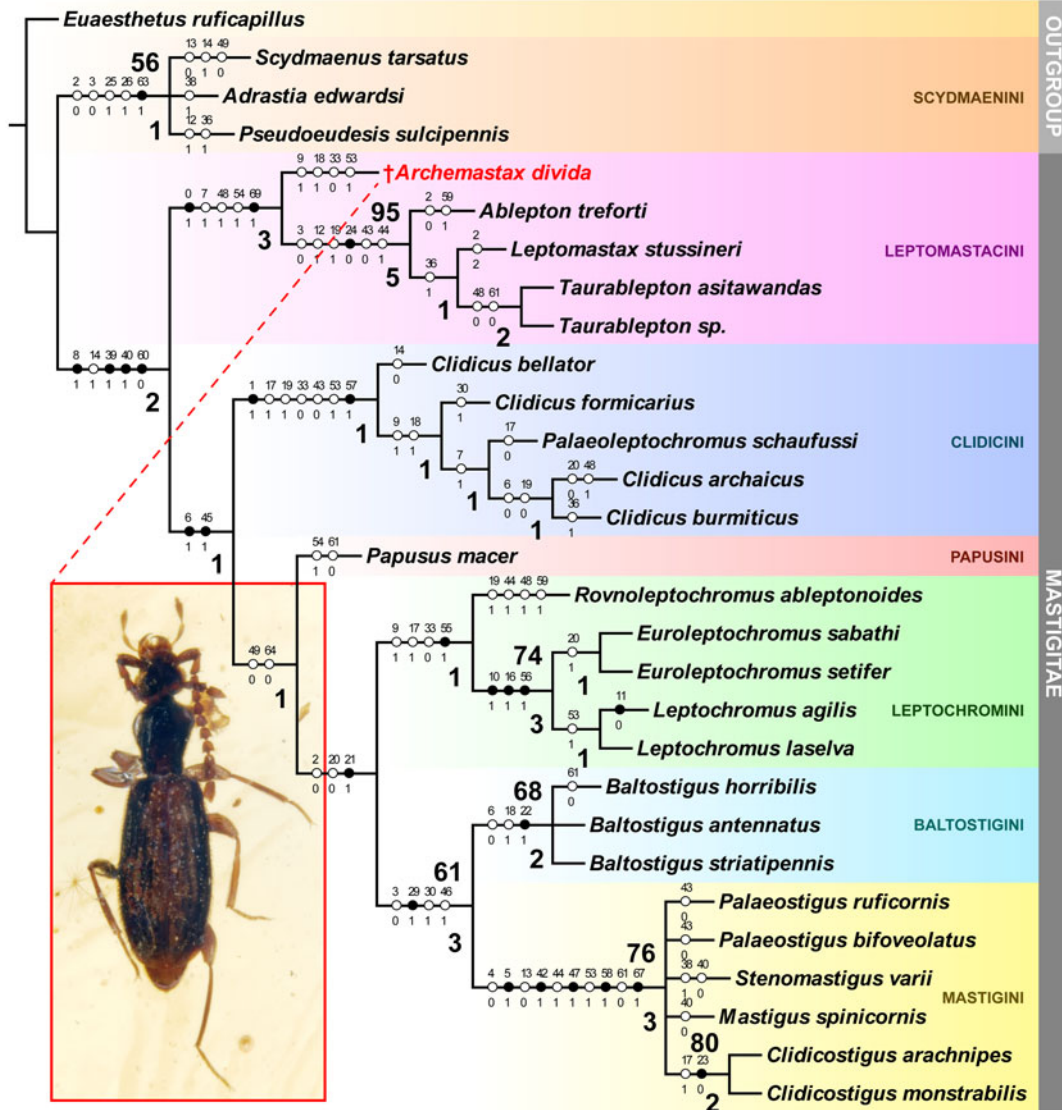
†*Archemastax divida* sp. nov.  
(Figs 2–5)

**Type material.** Holotype, NIGP168713, sex undetermined; paratype, SNUC-Paleo-0044, sex undetermined.

**Locality and horizon.** Upper Albian–lower Cenomanian, Hukawng Valley, northern Myanmar.

**Diagnosis.** As for the genus (*vide supra*).

**Description.** (Note: measurements are provided only for the holotype, which is in an upright position; the length of the elytra of the paratype is same as of the holotype.) Body length 1.64 mm. Body elongate, flattened and uniformly reddish-brown, appendages slightly lighter in colour. Head slightly broader than long, broadest at eyes and flattened; length from clypeal anterior margin towards base 0.25 mm, width of head across eyes 0.27 mm; vertex strongly transverse and flattened, indistinctly impressed medially and anteriorly confluent with strongly transverse frons; tempora about as long as eyes in dorsal view, strongly rounded and convergent towards distinct occipital constriction; frons sub-triangular, broad and flattened, descending towards clypeus, with complete and distinct frontal-clypeal groove; eyes large and strongly convex, nearly circular, finely faceted; supraantennal tubercles moderately developed; antennal insertions located anterior to eyes; sculpture of head dorsum not clearly visible; vestiture composed of short, sparse, curved and suberect setae, vertex with one long, thickened setae on each side. Maxillary palpus slightly shorter than head; palpomere I minute and sub-quadrate; palpomere II elongate, length 0.16 mm, evenly broadening from base towards apex; palpomere III elongate, shorter than II, length 0.11 mm, pedunculate at base,



**Figure 6.** Strict consensus cladogram of 10 most parsimonious trees obtained by the ‘implicit enumeration’ analysis of a data matrix of unweighted and unordered adult morphological characters under implied weighting ( $K = 3$ ; tree length = 150 steps; consistency index = 0.48; retention index = 0.79), showing phylogenetic placement of †*Archemastax dividia* gen. et sp. nov. Standard bootstrap ( $\geq 50$ ) and absolute Bremer support values ( $\geq 1$ ) are shown above and below branches, respectively. Unambiguously optimized character changes are plotted along internodes. Black circles indicate unique character changes; white circles indicate parallelisms or reversals; character numbers are above circles; character states are below circles.

strongly broadened distally, truncate at apex, and with ring of thickened lanceolate setae; palpomere IV short and conical, length 0.04 mm, narrower than III and broadest at base, apical palpal cone present; all palpomeres covered with fine, suberect setae pointed mostly apically. Antennae distinctly shorter than body length, antennal length 0.96 mm, all antennomeres covered with thin, suberect setae, and with modified flattened spatulate setae around apex except for antennomere XI. Pronotum distinctly longer than broad, broadest near anterior two-fifths and strongly narrowing towards base, length of pronotum along midline 0.41 mm, maximum

width 0.32 mm, pronotal index (length/width) 1.28; anterior and lateral margins strongly rounded, posterior margin virtually straight, sides in posterior three-fifths evenly constricted; posterior collar short. Punctuation of pronotal disc not visible; vestiture dense, short and strongly suberect. Prothoracic hypomera not delimited; prosternum elongate, without discernible details; prosternum densely covered with very thin, short and suberect setae. Elytra more convex than pronotum, broadest at posterior third; length of elytra along suture 0.98 mm, maximum width 0.50 mm, elytral index (length/width 1.95); each elytron with indistinct or absent humerus,

five rows of longitudinal, deeply punctate striae, and nearly rounded apex; vestiture similar to that on pronotum, but setae slightly longer. Metathoracic wings fully developed. Mesoscutellum not observable in both specimens. Mesoventrite short, with narrow mesoventral carina separating mesocoxae. Metaventrite large, much broader than long, sides of ventrite convex, posteromedian part slightly impressed, with complete median longitudinal carina. Abdomen much longer than metaventrite, six abdominal sternites visible, first visible sternite (III) longest; sternite VIII not modified, vestiture finely setose. Pygidium exposed, densely setose. Legs long and slender, tibiae with two apical spines.

**Etymology.** The specific epithet ‘*divida*’ means ‘divided, separated’, referring to the transitional morphology of the new species.

### Phylogenetic placement of *Archemastax*

Parsimony analysis using TNT v. 1.5-beta based on a data matrix derived from a modified, previously published data set (Supplementary material, S1, S2) under implied weight analysis ( $K=3$ ) resulted in 10 most parsimonious trees. A strict consensus tree (with tree length = 150 steps, consistency index = 0.48 and retention index = 0.79) was calculated, in which †*Archemastax* was recovered as the sister group of modern leptomastacines (Fig. 6). The monophyly of Leptomastacini was supported by two unequivocal synapomorphies: modified, broadened and flattened setae on thorax and antennae present (character 0, state 1), and modified broadened setae on mouthparts present (character 69, state 1). The topology of our strict consensus cladogram (Fig. 6) is largely similar to that of Jałoszyński *et al.* (2018, fig. 4); note that in both these trees only a clade composed of extant leptomastacines retained high statistical support. In order to provide a comparison with the result of Jałoszyński *et al.* (2018, fig. S1), we also performed a separate analysis using Bayesian inference; the result again supported the monophyly of †*Archemastax* + extant Leptomastacini (Supplementary material Fig. S5; posterior probability = 1). But, alternatively, the clade was recovered as being derived from within the Clidicini.

### Discussion

Among the three extant (Scydmaenitae, Mastigitae, Cephenniitae) and one extinct (Hapsomelitae) supertribes of the subfamily Scydmaeninae, †*Archemastax*

can be assigned to Mastigitae based on the ant-like general habitus (i.e. with distinct constrictions between head and pronotum and between pronotum and elytra); the antennomere I (scape) being elongate, and much longer than antennomere II (pedicel); the antennae being distinctly geniculate between scape and pedicel, so that the pedicel and flagellomeres are able to bend ventrally; the maxillary palpi being longer than the head, with palpomere IV not dome-like; and the compound eyes located in the anterior part of the head. Six tribes of Mastigitae have been established following a recent phylogenetic analysis including all extant and fossil representatives (*sensu* Jałoszyński *et al.* 2018). †*Archemastax* exhibits a mosaic of character states, some of which are shared with the tribe Leptomastacini and others with the tribe Papusini and Clidicini. †*Archemastax* has two elongate, thickened setae on the basolateral portion of the vertex, one pair of similar setae on the anterolateral margin of the clypeus, and two pairs on the anterior margin of the labrum (Fig. 3B). Similarly modified thick or robust setae are also present on the submentum, prementum, maxilla and labial palpi (Fig. 3C). These structures are not found among modern mastigites except for Leptomastacini (Supplementary material, Figs S2A–D, S4A–C) comprising three extant genera (*Ablepton* Frivaldszky, 1877, *Leptomastax* Pirazzoli, 1855 and *Taurablepton* Franz, 1988) (Jałoszyński 2018). †*Archemastax* also exhibits strongly flattened broadened spatulate setae around the apices of antennomeres I–IX (Figs 2A, 5), which are diagnostic for the extant Leptomastacini (Supplementary material, Figs S2E, F, S4D). These characters provide direct evidence for a close affinity between †*Archemastax* and modern leptomastacines, which is congruent with the result of our phylogenetic analyses (Fig. 6; Supplementary material, Fig. S5). Exhibiting a number of derived traits, *Archemastax* could be a member of a lineage that diverged prior to the most common ancestor of extant Leptomastacini and subsequently went extinct (a stem group of Leptomastacini), or alternatively represents the true ancestor that directly gave rise to all living leptomastacines.

Otherwise, †*Archemastax* appears to embody a set of plesiomorphic features that are absent in extant Leptomastacini: (1) maxillary palpomeres III and IV distinctly demarcated (Fig. 3B, C), with apex of palpomere III narrower than base of palpomere IV, and the suture separating III and IV straight and transverse; (2) palpomere IV triangular, slightly longer than broad; (3) compound eyes (Figs 2, 3B, C, 5) large, protruding laterally; (4) elytra bearing large and deep punctures arranged in regular longitudinal rows; and (5) foveae absent (Fig. 2B, C) on the prosternum and pterothorax. In contrast,

extant members of Leptomastacini have the maxillary palpomeres III–IV forming a compact oval club, with the suture between palpomeres III and IV strongly oblique (Supplemental material, Fig. S1B); the palpomere IV is much broader than long (Fig. 1; Supplemental material, Fig. S1B); the compound eyes are strongly reduced or absent (Fig. 1; Supplemental material, Figs S1A, S2A, S3A); the elytra have only shallow or no punctures (Fig. 1); and the prosternum and pterothorax have large foveae containing leaf-like setae (Supplemental material, Figs S3B–D, S4E, F). It should be noted that the large eyes of †*Archemastax* are shared with the tribe Papusini, and this character is diagnostic for the latter group.

The enigmatic Papusini currently contains a single genus (*Papusus*) and nine species distributed in the Nearctic region, inhabiting the driest deserts of North America (O’Keefe 2003). The relationship of Papusini within Mastigitae remains controversial, and its position is particularly unstable (Jałoszyński 2012, 2016b). The most recent analysis (Jałoszyński *et al.* 2018) placed it, albeit with low statistical support, as sister to Leptochromini + (Baltostigini + Mastigini). A similar topology is obtained by the present analysis (Fig. 6). Among the many recent studies on the phylogeny of Mastigitae, a potential affinity of Papusini with Leptomastacini has been reported only once (Jałoszyński 2016b), supported by the presence of mesocoxal lateroventral bristles that are unique for these two groups. Moreover, †*Archemastax* also possesses similarly large compound eyes that are diagnostic for Papusini, as well as an identical shape of the maxillary palpi. Based on these similarities, it is possible that modern Papusini may be derived from an *Archemastax*-like ancestor (with large eyes) that originated in Laurasia, and later branched off in Laurentia or dispersed into Laurentia from the Eurasian part of Laurasia, to form their current distribution. Nevertheless, it is still uncertain whether the large eyes of Papusini represent a plesiomorphic trait, or a secondarily derived state retained from a different small-eyed group; given that the extant papusines are active during the night (O’Keefe 2003), it is not impossible that the large eyes are a convergently derived trait adaptive to their nocturnal habits.

On the other hand, in a separate Bayesian analysis (Supplemental material, Fig. S5) the Leptochromini (pp = 1) comprised a polytomy (pp = 0.55) within the tribe Clidicini (pp = 0.83), a result substantially different from that of a similar analysis by Jałoszyński (2018, fig. S1; relationship of Leptochromini within Mastigitae unsolved). The differences between these two analyses may stem from the extensive amount of recoding of

several fossil taxa of Clidicini (taxa listed in Supplementary material, S1), as well as a few morphological similarities shared by †*Archemastax divida* and a number of extinct *Clidicus* species. Both †*Archemastax* and the two extinct species of *Clidicus* were reported from the same deposit (Burmese amber). These taxa share a similar form of the maxillary palpus (probably plesiomorphic for Mastigitae), the presence of a collar at the base of the pronotum, the large punctures of the elytra that are regularly arranged in longitudinal rows, and the presence of a median longitudinal carina of the metaventrite (carina present in *C. archaicus* (Cai & Huang 2016), absent in *C. burmiticus* (Yin, Cai, Huang & Li 2017a); even the rowed setae (although much thinner) of the mesocoxae in the two *Clidicus* species resemble the bristles of the same body parts in †*Archemastax* (Cai & Huang 2016; Yin *et al.* 2017a; note the genus *Cretoleptochromus* was subsequently synonymized with *Clidicus* by Jałoszyński *et al.* (2018)). In that regard, the possibility that †*Archemastax* may have diverged from a common ancestor of Leptochromini + Clidicini before the mid-Cretaceous cannot be totally excluded; regardless, the strongly modified setae of the head and antennae are so far unique to Leptochromini, and †*Archemastax* lacks most Clidicini synapomorphies (Jałoszyński 2018).

Our new discovery of †*Archemastax* from Burmese amber, as stated above, shows a transitional morphology mostly shared between Leptomastacini and Papusini, indicating a relatively later divergence times of these two tribes. Based on the highly modified head and antennae, which are mostly likely homologous to those in the extant leptomastacines, †*Archemastax* can be established as a stem-group Leptomastacini and the sister group to extant members of the tribe. Currently, the Mastigitae have much richer fossil records than any other scydmaenine lineages, which have already provided critical insights into the early evolution of this group. However, the inter-tribal relationships within the supertribe are still inadequately resolved; therefore, a fossil-calibrated molecular phylogeny including all mastigitae genera will be required in future.

## Acknowledgements

We thank Adam J. Brunke (Agriculture and Agri-Food Canada, Ottawa, Canada) and an anonymous reviewer who critically read a previous version of the manuscript and provided helpful comments. Peter Hlaváč (Praha, Czech Republic) kindly provided the two extant species used in this study. The present study was supported by the Strategic Priority Research Program of the Chinese Academy of Sciences (XDB26000000), and the National

Natural Science Foundation of China (31872965; 41602009; 41688103).

## Supplementary material

Supplementary material for this article can be accessed here: <https://doi.org/10.1080/14772019.2019.1584924>.

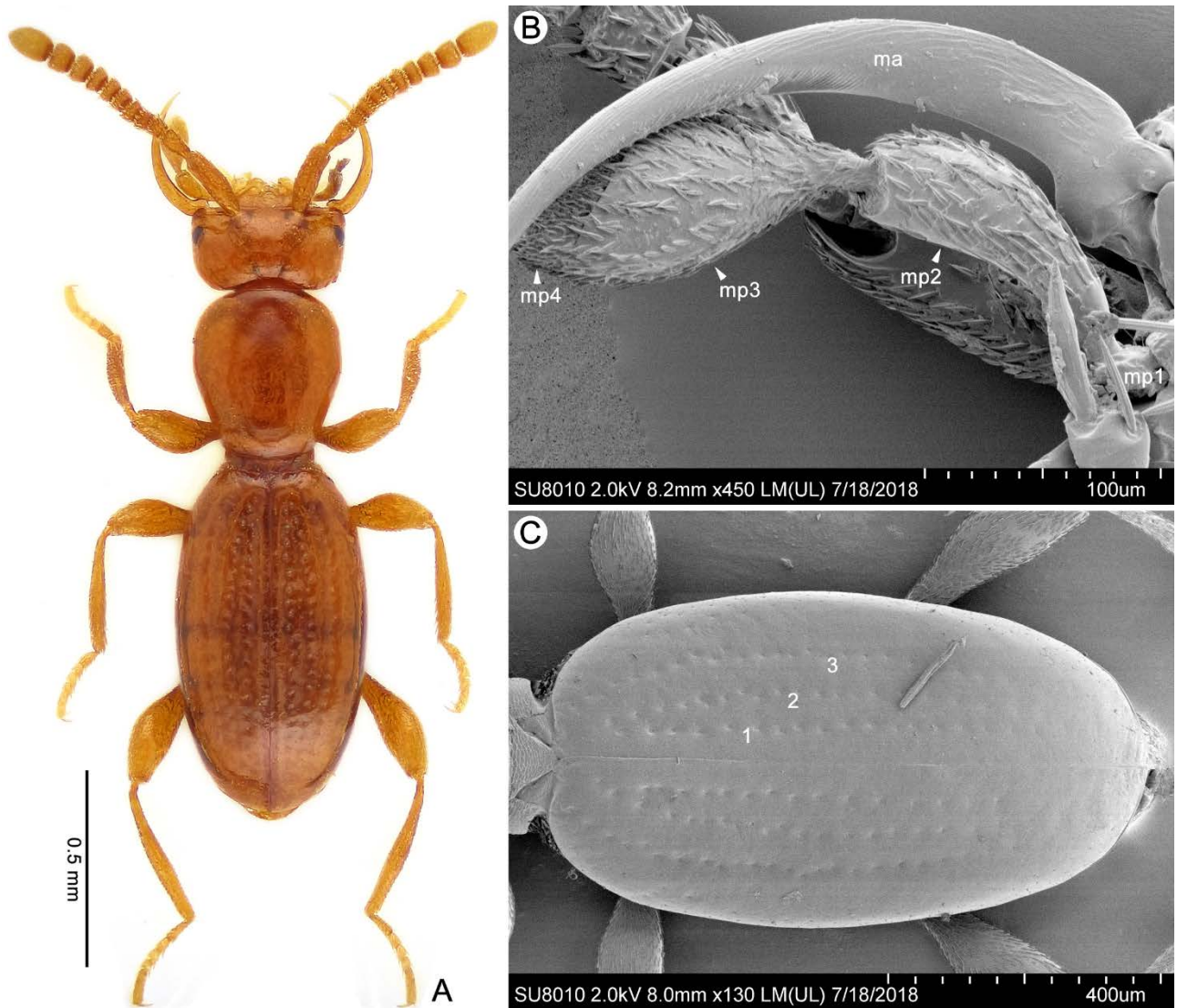
## References

- Bordoni, A. & Castellini, G.** 1973. Sulle specie Paleartiche del genere *Mastigus* Latreille con osservazioni su due specie dell’Africa Australe (Coleoptera Scydmaenidae). *Redia*, **54**, 295–323.
- Cai, C. & Huang, D.** 2016. *Cretoleptochromus archaicus* gen. et sp. nov., a new genus of ant-like stone beetles in Upper Cretaceous Burmese amber (Coleoptera, Staphylinidae, Scydmaeninae). *Cretaceous Research*, **63**, 7–13.
- Casey, T. L.** 1897. Coleopterological notices, VII. *Annals of the New York Academy of Sciences*, **9**, 285–684.
- Castellini, G.** 1996. Revisione del genere *Leptomastax* Pirazzoli, 1855 (Coleoptera, Scydmaenidae). *Atti del Museo Civico di Storia Naturale di Grosseto*, **15**, 1–137.
- Chhibber, H. L.** 1934. *The mineral resources of Burma*. MacMillan, New York, 320 pp.
- Cruikshank, R. D. & Ko, K.** 2003. Geology of an amber locality in the Hukawng Valley, northern Myanmar. *Journal of Asian Earth Sciences*, **21**, 441–455.
- Fleming, J.** 1821. Insecta. Pp. 41–56 + pl. 85 in Anonymous (ed.) *Supplement to the Fourth, Fifth and Sixth Editions of the Encyclopaedia Britannica, Volume fifth [Part 1]*. Archibald Constable and Co., Edinburgh.
- Franz, H.** 1988. Scydmaenidae aus S-Anatolien. *Entomologische Blätter für Biologie und Systematik der Käfer*, **84**, 107–113.
- Frivaldszky, J.** 1877. Coleoptera nova e Hungaria meridionale. *Természeti Füzetek*, **1**, 17–22.
- Goloboff, P. & Catalano, S. A.** 2016. TNT version 1.5, including a full implementation of phylogenetic morphometrics. *Cladistics*, **32**, 221–238.
- Grimaldi, D. A. & Ross, A. J.** 2017. Extraordinary Lagerstätten in amber, with particular reference to the Cretaceous of Burma. Pp. 287–342 in N. C. Fraser & H.-D. Sues (eds) *Terrestrial Conservation Lagerstätten: Windows into the Evolution of Life on Land*. Dunedin Academic Press, Edinburgh.
- Grimaldi, D. A., Engel, M. S. & Nascimbene, P. C.** 2002. Fossiliferous Cretaceous amber from Myanmar (Burma): its rediscovery, biotic diversity, and paleontological significance. *American Museum Novitates*, **3361**, 1–72.
- Jaloszynski, P.** 2012. Description of *Euroleptochromus* gen. n. (Coleoptera, Staphylinidae, Scydmaeninae) from Baltic amber, with discussion of biogeography and mouthpart evolution within Clidicini. *Systematic Entomology*, **37**, 346–359.
- Jaloszynski, P.** 2016a. Scydmaeninae Leach, 1815. Pp. 376–385 in R. G. Beutel & A. B. Leschen (eds) *Handbook of Zoology, Arthropoda: Insecta, Coleoptera, Beetles, Volume 1: Morphology and Systematics* (Archostemata, Adephaga, Myxophaga, Polyphaga partim). Second Edition. Walter de Gruyter GmbH, Berlin/Boston.
- Jaloszynski, P.** 2016b. A new Eocene genus of ant-like stone beetles sheds new light on the evolution of Mastigini. *Journal of Paleontology*, **89**, 1056–1067.
- Jaloszynski, P.** 2018. World genera of Mastigitae: review of morphological structures and new ecological data (Coleoptera: Staphylinidae: Scydmaeninae). *Zootaxa*, **4453**, 1–119.
- Jaloszynski, P. & Perkovsky, E.** 2016. Diversity of Scydmaeninae (Coleoptera: Staphylinidae) in Upper Eocene Rovno amber. *Zootaxa*, **4157**, 1–85.
- Jaloszynski, P., Matsumura, Y. & Beutel, R. G.** 2015. Evolution of a giant intromittent organ in Scydmaeninae (Coleoptera: Staphylinidae): functional morphology of the male postabdomen in Mastigini. *Arthropod Structure and Development*, **44**, 77–98.
- Jaloszynski, P., Brunke, A. J., Yamamoto, S. & Takahashi, Y.** 2018. Evolution of Mastigitae: Mesozoic and Cenozoic fossils crucial for reclassification of extant tribes (Coleoptera: Staphylinidae: Scydmaeninae). *Zoological Journal of the Linnean Society*. <https://doi.org/10.1093/zoolinnean/zly010>
- Jaloszynski, P., Brunke, A. J., Metscher, B., Zhang, W.-W. & Bai, M.** 2017. *Clidicostigus* gen. nov., the first Mesozoic genus of Mastigini (Coleoptera: Staphylinidae: Scydmaeninae) from Cenomanian Burmese amber. *Cretaceous Research*, **72**, 110–116.
- Kania, I., Wang, B. & Szewo, J.** 2015. *Dicranoptycha* Osten Sacken, 1860 (Diptera, Limoniidae) from the earliest Cenomanian Burmese amber. *Cretaceous Research*, **52**, 522–530.
- Latreille, P. A.** 1802. *Histoire naturelle, générale et particulière des crustacés et des Insectes. Familles naturelles des genres. Volume 3*. F. Dufart, Paris, xii + 13–467 + [1] pp.
- Leach, W. E.** 1815. Entomology. Pp. 57–172 in D. Brewster (ed.) *Brewster’s Edinburgh Encyclopedia. Volume IX [part I]*. W. Blackwood, J. Waugh, etc., Edinburgh.
- Leleup, N.** 1968. Révision des Mastigini de l’Afrique du Sud. *Annales du Musée Royal de l’Afrique Centrale, Tervuren, Series 8 (Sciences Zoologiques)*, **166**, 1–107.
- Mao, Y., Liang, K., Su, Y., Li, J., Rao, X., Zhang, H., Xia, F., Fu, Y., Cai, C. & Huang, D.** 2018. Various amberground marine animals on Burmese amber with discussions on its age. *Palaeoentomology*, **1**, 91–103.
- Nixon, K. C.** 2002. *WinClada (Beta)*, v. 1.00.08 Published by the Author, Ithaca, New York. Updated at: <http://www.cladistics.com> [accessed 5 December 2003].
- O’Keefe, S. T.** 2003. Revision of the Nearctic genus *Papusus* Casey (Coleoptera, Scydmaenidae). Pp. 257–310 in G. Cuccodoro & R. A. B. Leschen (eds) *Systematics of Coleoptera: Papers Celebrating the Retirement of Ivan Löbl. Memoirs on Entomology, International*, **17**.
- Pirazzoli, O.** 1855. *Coleopteri italici genus novum* Leptomastax. Typographia Galeati, Forocornelli (Imola), 5 pp.
- Rambaut, A., Suchard, M. A., Xie, D. & Drummond, A. J.** 2013. *Tracer* v. 1.6. Updated at: <http://tree.bio.ed.ac.uk/software/tracer/> [accessed 10 September 2018].
- Rasnitsyn, A. P., Bashkuev, A. S., Kopylov, D. S., Lukashevich, E. D., Ponomarenko, A. G., Popov, Y. A., Rasnitsyn, D. A., Ryzhkova, O. V., Sidorchuk, E. A., Sukatsheva, I. D. & Vorontsov, D. D.** 2016. Sequence and scale of changes in the terrestrial biota during the

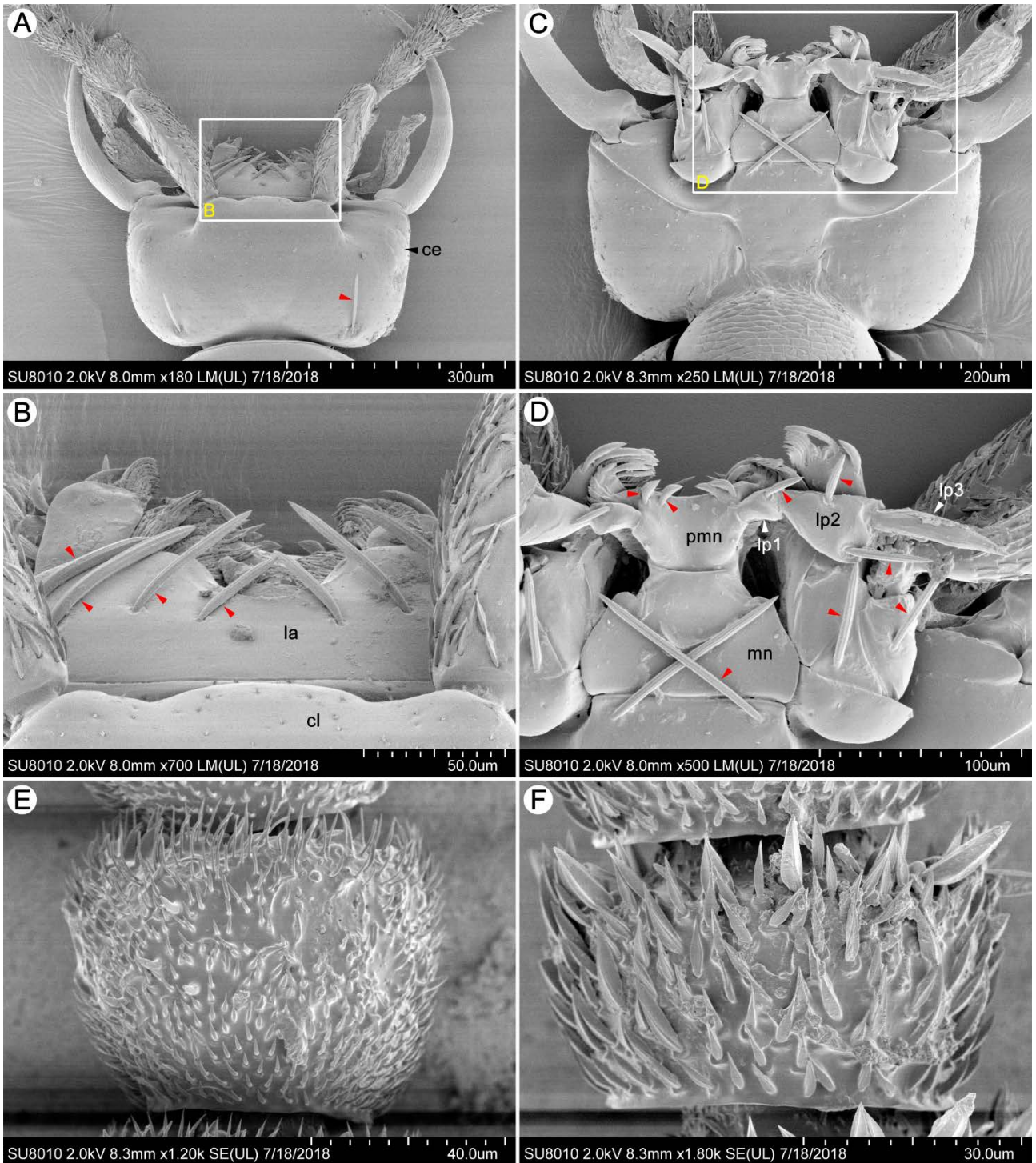
- Cretaceous (based on materials from fossil resins). *Cretaceous Research*, **61**, 234–255.
- Ronquist, F., Teslenko, M., Van Der Mark, P., Ayres, D. L., Darling, A., Höhna, S., Larget, B., Liu, L., Suchard, M. A. & Huelsenbeck, J. P.** 2012. MrBayes 3.2: efficient Bayesian phylogenetic inference and model choice across a large model space. *Systematic Biology*, **61**, 539–542.
- Ross, A. J., Mellish, C. & Crighton, B.** 2010. Burmese amber. Pp. 208–235 in D. Penney (ed.) *Biodiversity of Fossils in Amber from the Major World Deposits*. Siri Scientific Press, Manchester.
- Shi, G., Grimaldi, D. A., Harlow, G. E., Wang, J., Wang, J., Yang, M., Lei, W., Li, Q. & Li, X.** 2012. Age constraint on Burmese amber based on U–Pb dating of zircons. *Cretaceous Research*, **37**, 155–163.
- Yin, Z., Cai, C. & Huang, D.** 2018a. Last major gap in scydmaenine evolution filled (Coleoptera: Staphylinidae). *Cretaceous Research*, **84**, 62–68.
- Yin, Z., Cai, C. & Huang, D.** 2018b. A potentially diverse fauna of springtail-hunting scydmaenines during the late Mesozoic (Coleoptera, Staphylinidae, Scydmaeninae). *Cretaceous Research*, **90**, 163–167.
- Yin, Z., Cai, C., Huang, D. & Li, L.** 2017a. A second species of the genus *Cretoleptochromus* Cai & Huang (Coleoptera: Staphylinidae: Scydmaeninae) from mid-Cretaceous Burmese amber. *Cretaceous Research*, **75**, 115–119.
- Yin, Z., Cai, C.-Y., Huang, D.-Y. & Li, L.-Z.** 2017b. Specialized adaptations for springtail predation in Mesozoic beetles. *Scientific Reports*, **7**, 98. <https://doi.org/10.1038/s41598-017-00187-8>.

**Associate Editor: Vladimir Blagoderov**

Supplemental Figures 1–5

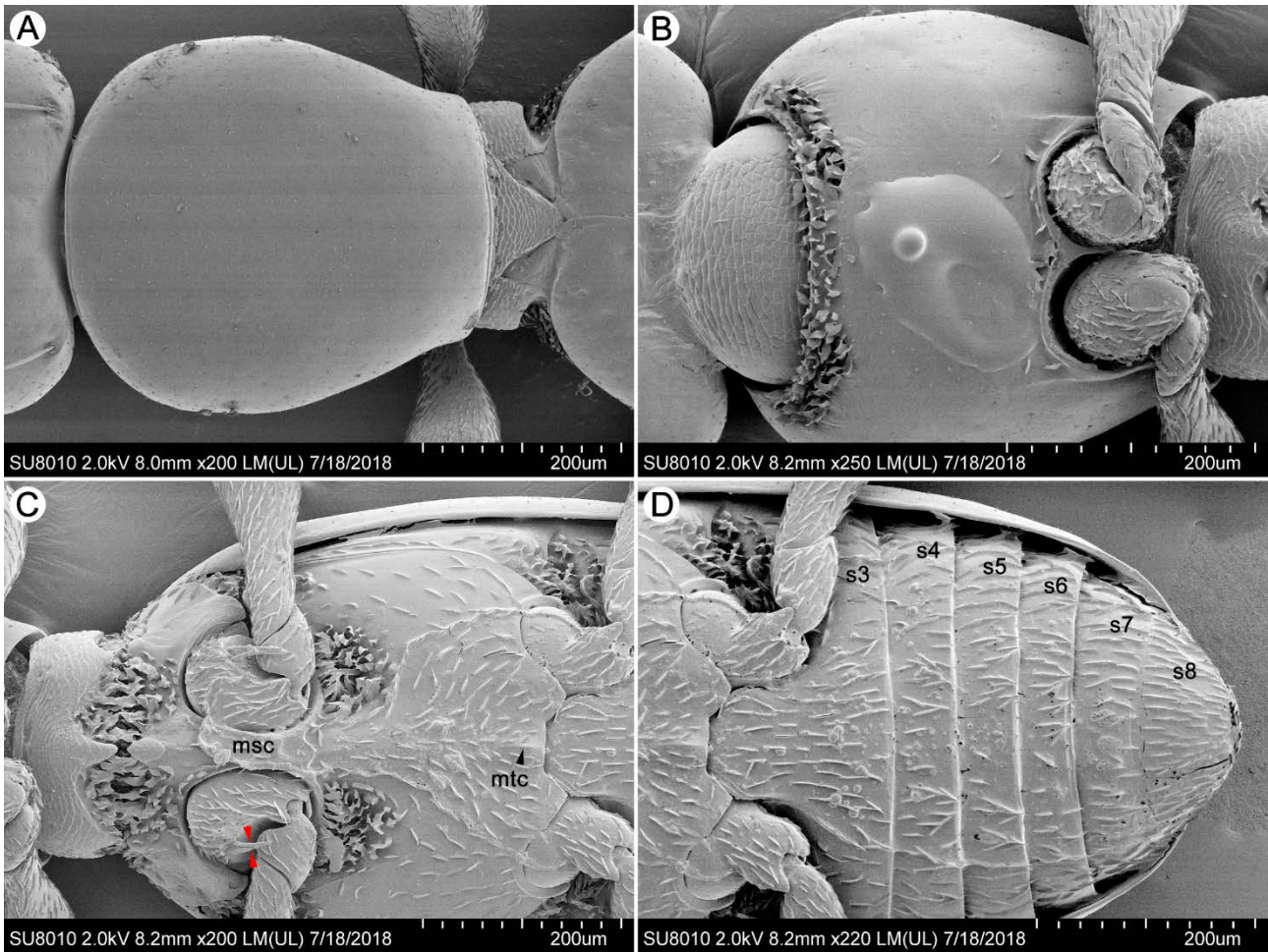


**Supplemental Figure 1.** Morphology of *Leptomastax stussineri*. (A) dorsal habitus; (B) mandible and maxillary palpus; (C) elytra. Abbreviations: 1–3, rows 1–3 of elytral punctation; ma, mandible; mp1–4, maxillary palpomeres I–IV.

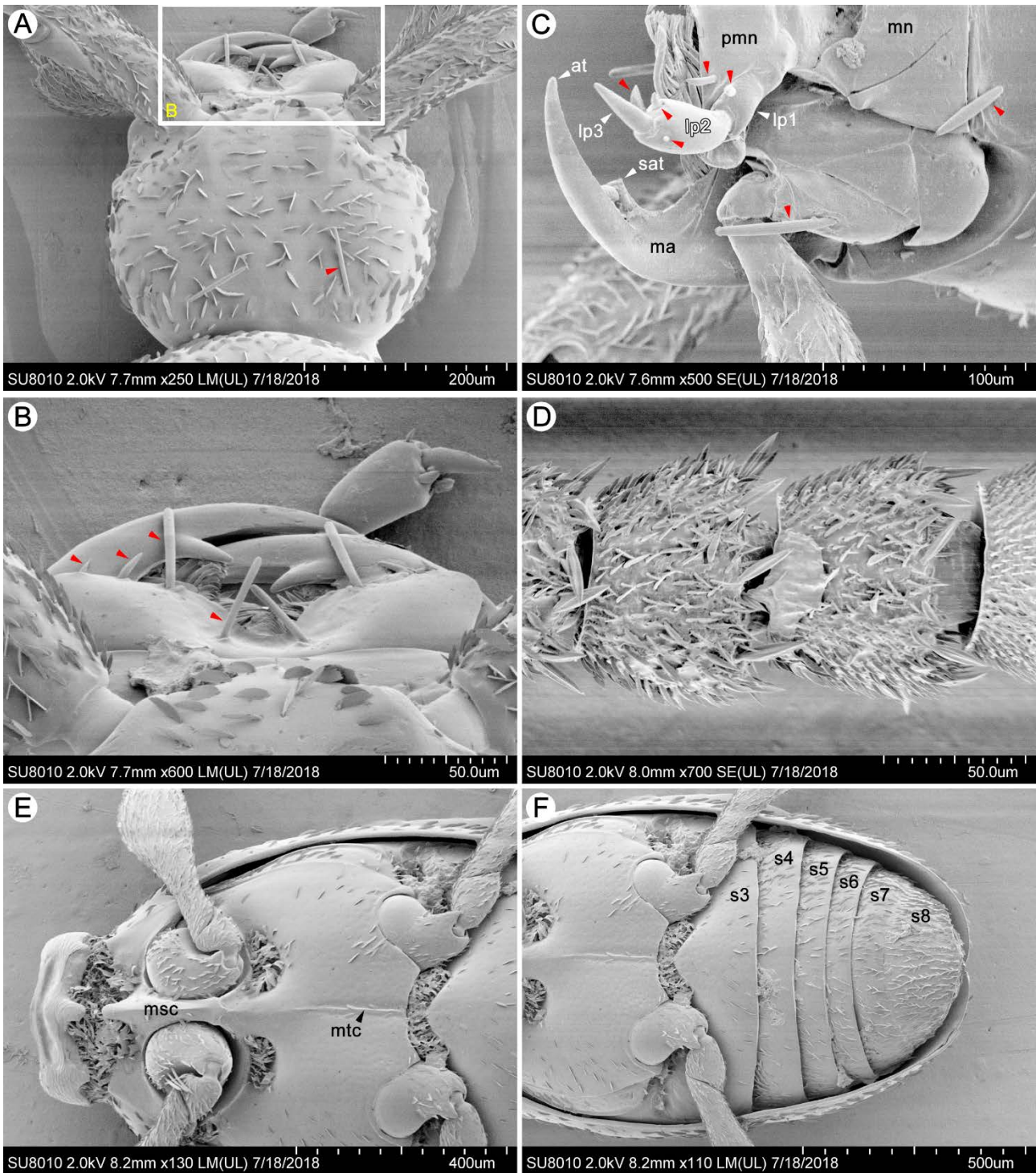


**Supplemental Figure 2.** Morphology of *Leptomastax stussineri*. (A) head dorsum; (B) labrum, enlarged; (C) head venter; (D) mouthparts, enlarged; (E) antennomere X, showing normal setae; (F) antennomere VI, showing modified spatulate setae. Red arrows indicate modified thickened setae. Abbreviations: ce, compound eye; cl, clypeus; la, labrum; lp1–3, labial palpomeres I–III; mn, mentum; pmn, prementum.

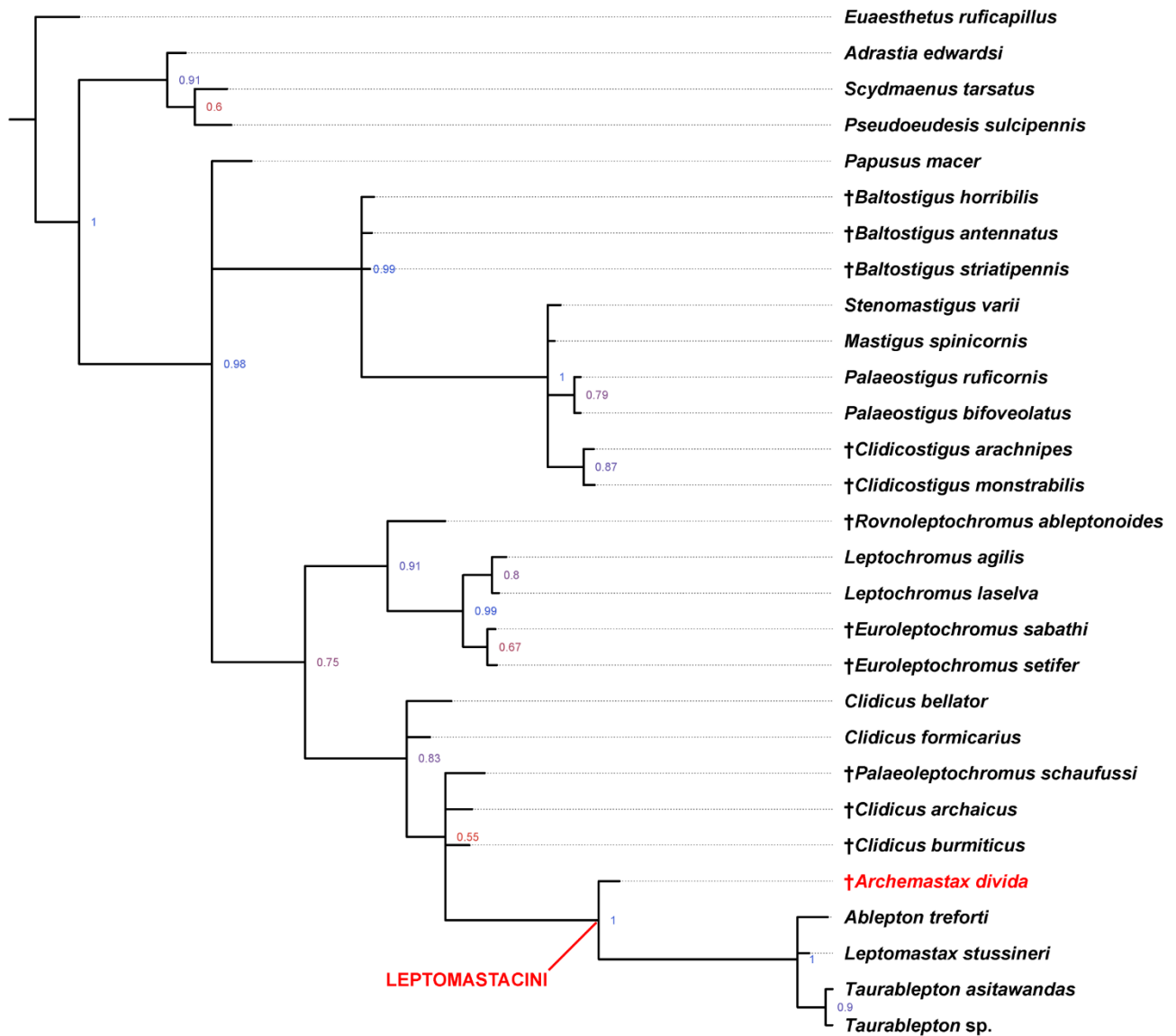




**Supplemental Figure 3.** Morphology of *Leptomastax stussineri*. (A) pronotum; (B) prosternite; (C) meso- and metaventrite; (D) abdominal sternites. Red arrows show modified bristles on mesocoxa. Abbreviations: msc, median mesoventral carina; mtc, median metaventral carina; s3–8, sternites III–VIII.



**Supplemental Figure 4.** Morphology of *Ablepton treforti*. (A) head dorsum; (B) labrum, enlarged; (C) mouthparts, enlarged; (D) antennomeres V–VI, showing modified spatulate setae; (E) meso- and metaventrite; (F) abdominal sternites. Red arrows indicate modified thickened setae. Abbreviations: at, apical tooth; lp1–3, labial palpomeres I–III; ma, mandible; mn, mentum; msc, median mesoventral carina; mtc, median metaventral carina; pmn, prementum; s3–8, sternites III–VIII; sat, subapical tooth



**Supplemental Figure 5.** Majority-rule consensus tree of Bayesian inference showing phylogenetic placement of *†Archemastax dividia*. Values on nodes are posterior probabilities (PP).

## Supplemental File 1

**Characters and character states used in phylogenetic analysis** (modified from Jałoszyński *et al.*, 2018)

**Notes:** those characters with a ‘\*’ were modified in definition or in coding, with an annotation following the description. For clarity, taxa with changes in coding are summarized at the end.

00. Modified, broadened and flattened setae on thorax and antennae: (0) absent; (1) present.
01. Setae on frons and vertex: (0) approximately uniform in length; (1) some setae conspicuously long and erect among much shorter and denser basic vestiture. Note: ‘setae’ here mean normal setae, not the specialized ones as in members of modern Leptomastacini and the fossil.
02. Broadest site of head capsule: (0) near middle; (1) in posterior half; (2) in anterior half.
03. Anterior margin of frons between antennal insertions: (0) subtriangular, distinctly expanded anteriorly at middle; (1) straight or indistinctly arcuate.
- 04\*. Frontoclypeal groove: (0) marked only at middle; (1) extending over entire width of head capsule. Changed from ‘?’ to ‘1’ for *Cretoleptochromus burmiticus* based on an examination of the holotype.
05. Median longitudinal groove on vertex: (0) absent; (1) present.
- 06\*. Posteromedian impression on vertex: (0) absent; (1) present. Changed from ‘1’ to ‘0’ for *Cretoleptochromus archaicus* based on an examination of the holotype.
07. Posterior margin of vertex: (0) lacking a pair of enlarged lateral setae or conspicuous chaetopores; (1) with a pair of distinctly enlarged lateral setae, clearly different from surrounding setae, or with a pair of conspicuous chaetopores.
08. Antennal insertions: (0) adjacent to mandibular bases; (1) clearly separated from mandibular bases.
09. Postgenal (subocular) bristles: (0) absent; (1) present.
10. Postgenal process: (0) absent; (1) present.
11. Shape of postgenal process: (0) short, tuberculate; (1) strongly elongate.
12. Compound eyes: (0) large, composed of at least several dozen ommatidia; (1) rudimentary, composed of one to several ommatidia, or absent.
13. Placement of eyes: (0) adjacent to antennal insertions; (1) separated (sometimes narrowly) from antennal insertions.
14. Labrum: (0) with anterior margin straight or arcuate; (1) with anteromedian emargination (sometimes with an additional narrow median projection).
15. Mandible: (0) lacking preapical teeth or, if teeth present, then located strictly mesally in same plane as apical tooth; (1) with at least one preapical tooth located and directed dorsomesally, above plane of mandible.
16. Setal process on maxillary palpomere 2: (0) absent; (1) present.
17. Setae on maxillary palpomere 2: (0) uniform; (1) at least a few remarkably long, erect and often thickened setae or thick bristles on anteroventral surface among shorter and/or suberect or recumbent basic vestiture.
18. Setae on maxillary palpomere 3: (0) uniform; (1) sparse, long and strongly erect setae (often thickened) present among basic recumbent or suberect vestiture.

- 19\*. Distal margin of maxillary palpomere 3: (0) approximately perpendicular to long axis of palpomere; (1) distinctly, often strongly, oblique. Changed from '?' to '0' for *Cretoleptochromus archaicus* based on an examination of the holotype.
- 20\*. Relative width of maxillary palpomere 4: (0) broader than 3; (1) narrower than 3. Changed from '?' to '1' for *Cretoleptochromus archaicus* based on an examination of the holotype..
21. Palpomere 4: (0) narrowing from base to apex; (1) broadening distad, at least in basal half.
22. Broadened palpomere 4: (0) weakly, often only slightly broadened and elongate; (1) strongly broadened, broader than long, axe-shaped.
23. Weakly broadened palpomere 4: (0) curved (*i.e.*, with one side convex and the opposite concave); (1) not curved (*i.e.*, with both sides nearly straight or convex).
24. Maxillary palpomeres 3 + 4: (0) with lateral margins confluent, palpomeres together forming compact oval; (1) with lateral margins not confluent.
25. Insertions of labial palps: (0) broadly separated (by more than maximum width of palpomere 1); (1) approximate (closer, *e.g.*, together than maximum width of palpomere 1).
26. Distance between antennal insertions: (0) at least twice as wide as antennal cavity; (1) about as wide as antennal cavity or narrower.
27. Length of scape: (0) much shorter than head capsule; (1) about as long as head capsule or slightly longer; (2) much longer than head capsule.
28. Antennae: (0) cannot bend between scape and pedicel; (1) can bend dorsad or dorsolaterad between scape and pedicel; (2) can bend ventrad or ventrolaterad between scape and pedicel.
29. Pedicel: (0) short, not conspicuously enlarged, lacking ventral rows of bristles; (1) strikingly elongated, much longer than subsequent antennomeres and with ventral bristles arranged in rows.
- 30\*. Bristles on scape: (0) absent, vestiture of scape relatively uniform; (1) present, strongly erect, long and directed ventrad (slightly or much thicker than basic vestiture of scape). Changed from '1' to '0' for *Cretoleptochromus burmiticus*, *C. archaicus*, and *Palaeoleptochromus schaufussi*. Here, the bristles on the scape are confined to members of the Mastigini; evidence has shown that these bristles had an early and independent origin, thus unique to this tribe (references in main document: Jałoszyński *et al.* 2017a; Yin *et al.* 2017a, 2018a).
31. Arrangement of bristles on scape: (0) unordered; (1) ordered in two longitudinal rows.
32. Flagellomeres (except 11): (0) all or nearly all elongate; (1) mostly broader than long or some about as long as broad.
33. Posterior pronotal collar: (0) distinct, demarcated from disc by transverse groove or impressed row of pits and variously distinct constriction; (1) absent.
- 34\*. Procoxal cavities: (0) broadly open posteriorly; (1) delimited posteriorly by hypomeral lobes strongly projecting mesad. Changed from '?' to '0' for *Cretoleptochromus burmiticus* and *C. archaicus* based on an examination of the respective holotypes.
35. Procoxal cavities: (0) distinctly demarcated from basisternum by arcuate ridges; (1) anteriorly confluent with basisternum.
36. Basisternal and coxal parts of prosternum: (0) subequal in length; (1) basisternal part much longer (1.5 times and more) than coxal part.
37. Vestiture of basisternal part of prosternum: (0) approximately uniform; (1) composed of two rows of setae extending along anterior and posterior margin and largely or completely aetose in between.
38. Anterior ridge of mesoventrite: (0) with posteromedian subtriangular projection or expansion; (1)

lacking posteromedian projection.

39. Posteromedian projection of anterior ridge of mesoventrite: (0) posteriorly connected with mesoventral intercoxal process; (1) posteriorly demarcated from mesoventral intercoxal process.
40. Transverse impression filled with setae on mesoventrite: (0) absent; (1) present.
41. Median region of mesoventrite anterior to mesocoxal cavities: (0) with conspicuously large, evenly and weakly convex area about as long as broad; (1) lacking such area.
42. Mesoventral intercoxal process: (0) slender and narrow, much longer than broad; (1) stout, about as long as broad.
43. Median subtriangular convexity of anterior mesoventral region: (0) present; (1) absent.
44. Lateral margins of mesoventral intercoxal process between mesocoxae: (0) sub-parallel; (1) convergent posteriorly.
45. Sharp anterior carina of mesocoxal cavities confluent with lateral margin of mesoventral process: (0) present; (1) absent.
46. Posterior margin of mesocoxal cavities: (0) carinate (at least partly); (1) non-carinate.
- 47\*. Metaventrite: (0) broadest near posterior third or between middle and posterior third, distinctly narrowing toward metacoxae; (1) broadest at or just in front of metacoxae. Changed from '?' to '0' for *Cretoleptochromus burmiticus* based on an examination of the holotype.
- 48\*. Median longitudinal metaventral carina: (0) absent; (1) present. Changed from '?' to '0' for *Cretoleptochromus burmiticus* based on an examination of the holotype, from '0' to '1' for *Leptomastax stussineri* based on an examination of the specimen.
49. Dorsolateral fovea (*i.e.*, laterad mesepimeron + mesanepisternum and directed mesally): (0) absent; (1) present.
50. Postmesocoxal metaventral fovea (at posterior or posterolateral margin of mesocoxal cavity and directed mesally or anteromesally): (0) absent; (1) present.
51. Fovea at lateral margin of mesocoxal cavity directed anterolaterally: (0) absent; (1) present.
52. Anterior margin of katepisternum: (0) not marked; (1) distinctly marked as arcuate groove extending along lateroanterior margin of metacoxa.
53. Admetacoxal margin of metaventrite: (0) concave, lacking angulate expansion; (1) with angulate expansion.
54. Row of several (3–6) thick bristles (conspicuously thicker than basic vestiture of coxa) on ventral surface of mesocoxa: (0) absent; (1) present.
55. Protrochanteral ventral comb of several (2–7) thick bristles: (0) absent; (1) present.
56. Profemoral ventral comb of several thick bristles: (0) absent; (1) present.
57. One or two conspicuously long and erect ventral setae in basal half of profemur: (0) absent; (1) present.
58. Suture between metaventrite and first visible abdominal sternite: (0) distinct; (1) nearly obliterated, abdominal sternite fused medially with posterior margin of metaventrite.
59. Transverse, broadly and inversely V-shaped median ridge on abdominal sternite 3: (0) absent; (1) present.
60. Elytral disc: (0) with punctures arranged in longitudinal rows or with impressed longitudinal striae; (1) with punctures not arranged in rows.
61. Longitudinal rows of elytral punctures: (0) fine and barely discernible, nearly lost among fine unordered punctures or microsculpture; (1) distinct, composed of conspicuously large punctures, often connected by impressed striae.

62. Basal elytral foveae: (0) absent; (1) present.
- 63\*. Median longitudinal impression on propygidium: (0) absent; (1) present. Changed from '?' to '0' for *Cretoleptochromus burmiticus* based on an examination of the holotype.
- 64\*. Posterior margin of abdominal sternite 8 in males: (0) distinctly emarginate; (1) rounded or truncate. Changed from '?' to '1' for *Cretoleptochromus burmiticus* based on an examination of the holotype.
65. Flagellum: (0) short and straight or C-shaped, but not looped; (1) very long, forming several loops.
66. Permanently everted membranous apical part of copulatory piece: (0) absent; (1) present.
67. Parameres: (0) symmetrical or nearly symmetrical; (1) asymmetrical, one paramere shorter than the other one.
- 68\*. Apices of parameres: (0) abruptly and strongly bent mesally; (1) not bent mesally, at most evenly and slightly curved toward middle. Changed from '?' to '1' for *Cretoleptochromus burmiticus* based on an examination of the holotype.
69. Modified broadened setae on mouthparts: 0 (absent); 1 (present).

**List of recoded taxa and changes of character states:**

1. *Cretoleptochromus burmiticus*

- 4(?) --> (1)  
 30(1) --> (0)  
 34(?) --> (0)  
 47(?) --> (0)  
 48(?) --> (0)  
 63(?) --> (0)  
 64(?) --> (1)  
 68(?) --> (1)

2. *Cretoleptochromus archaicus*

- 6(1) --> (0)  
 19(?) --> (0)  
 20(?) --> (1)  
 30(1) --> (0)  
 34(?) --> (0)

3. *Palaeoleptochromus schaufussi*

- 30(1) --> (0)

4. *Leptomastax stussineri*

- 48(0) --> (1)

## Supplemental File 2

### Morphological data matrix for phylogenetic analysis (modified from Jałoszyński *et al.* 2018)

	0000000000	1111111111	2222222222	3333333333	4444444444	5555555555	6666666666
	0123456789	0123456789	0123456789	0123456789	0123456789	0123456789	0123456789
01. <i>Euaesthetus ruficapillus</i>	0011000000	0-01000000	10-100000	0-11001000	0101100000	0000000000	1-00000010
02. <i>Scydmaenus tarsatus</i>	0000000000	0-00110000	10-111010	0-01000000	0101001000	0000000000	1-11100010
03. <i>Adrastia edwardsi</i>	0000000000	0-01010000	10-111010	0-0100001-	0101001001	0000000000	1-01100010
04. <i>Pseudoeudesis sulcipennis</i>	0000000000	0-1-0?0000	10-111010	0-01001000	0101000001	0000000000	1-11100010
05. <i>Ablepton treforti</i>	1000000110	0-11100001	10-000120	0-11000101	1100100011	1110100001	0100100001
06. <i>Taurablepton asitawandas</i>	1010000110	0-1-100001	10-000120	0-11001101	1100100001	1110100000	00001????1
07. <i>Taurablepton sp.</i>	1010000110	0-1-100001	10-000120	0-11001101	1100100001	1110100000	0000100001
08. <i>Leptomastax stussineri</i>	1020000110	0-11100001	10-000120	0-11001101	1100100011	1110100000	0100100001
09. <i>Palaeostigus ruficornis</i>	0000011010	0-00110000	0101111221	1101110001	1110111100	0001000010	0000011110
10. <i>Palaeostigus bifoveolatus</i>	0000011010	0-00110000	0101111221	1101110001	1110111100	0001000010	0000011110
11. <i>Stenomastigus varii</i>	0000011010	0-00110000	0101111221	110111001-	0011111100	0001000010	0000011110
12. <i>Mastigus spinicornis</i>	0000011010	0-00110000	0101111221	1101110001	0011111100	0001000010	0000011110
13. † <i>Clidicostigus arachnipes</i>	00000??010	0-00110100	01001?1221	1101??????	??????????	?????000??	0-0?????1?0
14. † <i>Clidicostigus monstrabilis</i>	000????010	0-00?10100	01001?1221	1101??????	??????????	?????000??	0-0???????
15. <i>Clidicus bellator</i>	0111101010	0-01010101	10-100120	0-0000001-	1100010001	0011000100	0100100010
16. <i>Clidicus formicarius</i>	0101101011	0-01110111	10-100220	100000001-	1100010001	0011000100	0100100010
17. <i>Papusus macer</i>	0011101010	0-01110000	10-101120	0-0100001-	11010??000	0000100000	0000000010
18. † <i>Palaeoleptochromus schaufussi</i>	0?21?01111	0-01??0011	10-1?0220	0-0????0??	??????????	??????01??	?-?????????
19. <i>Leptochromus agilis</i>	0001101011	1001111100	0101100220	0-00001001	1101010000	1101011000	0100000010
20. <i>Leptochromus laselva</i>	0001101011	1101111100	0101100220	0-00001001	1101010000	1101011000	0100000010
21. † <i>Euroleptochromus sabathi</i>	0001?01011	1101??1100	11011?0220	0-000?10??	?10?0?0000	??00011000	010???????
22. † <i>Euroleptochromus setifer</i>	0001101011	1101??1100	1101100220	0-00001001	?1000?0000	??00011000	010???????
23. † <i>Baltostigus horribilis</i>	0000100010	0-01?10010	01111?1221	1101??????	?????11000	??00000000	000???????
24. † <i>Baltostigus antennatus</i>	0000100010	0-01??0010	01111?1221	1101??????	??????????	??0??0000?	010?1??010
25. † <i>Baltostigus striatipennis</i>	0000100010	0-01110010	01111?1221	1101??00??	?001011000	??00000000	010???????
26. † <i>Rovnoleptochromus ableptonoides</i>	0001?0?011	0-01110101	0101100220	0-00????0??	??0?1?001?	??00010001	010???????
27. † <i>Clidicus archaicus</i>	0111100111	0-01110110	00-100220	0-00?000??	?10?0?001?	??11000100	010?1?????
28. † <i>Clidicus burmiticus</i>	0121100111	0-01110110	10-1?0220	0-00?010??	??????????	?????0001??	01001??010
29. † <i>Archemastax divida</i>	1011100111	0-01100010	10-100020	0-10000???	?1010?001?	???1100000	01001?????

Note: '-' indicates inapplicable characters; '?' indicates missing data.