

Taxonomic Notes on some Chinese Cerambycidae (Coleoptera)

M.-Y. Lin¹, S.-Q. Ge²

^{1,2}Key Laboratory of Zoological Systematics and Evolution, Institute of Zoology, Chinese Academy of Sciences, Beichen West Road, Chaoyang Dist., Beijing, 100101, China.

¹e-mail: linmeiyiing@ioz.ac.cn

²e-mail: gesq@ioz.ac.cn

Key words: *Oberea*, *Niponstenostola*, *Paraglenea*, new species, new synonym, Distribution, China.

Abstract: This paper deals with some taxa related to Qinling fauna. *Oberea* (*Amaurostoma*) *ressli* Demelt, 1963 (compared with *O. (A.) donecei* Pic, 1907, whose lectotype and paralectotype are designated) is newly recorded from China; *Oberea nigriceps* n. *obscuripennis* Breuning, 1967 is treated as a new synonym of *O. (O.) angustata* Pic, 1923; *O. (O.) rubroantennalis* **sp. nov.** (compared with *O. (O.) bicoloricornis* Pic, 1915) is described from Shaanxi and Sichuan; *O. (O.) pupillatoides* Breuning, 1947 is reinstated; *Saperda nigra* Gressitt, 1951 and *Stenostola lineata* Gressitt, 1951 are transferred to the genus *Niponstenostola* and the former is newly named as *Niponstenostola gressitti* **nom. nov.**; *Glenea fortunei* var. *soluta* Ganglbauer, 1887 is upgraded to a species and *Paraglenea cinereonigra* Pesarini et Sabbadini, 1997 is considered as a new synonym of *Paraglenea soluta* (Ganglbauer, 1887).

Introduction

The authors found some taxonomic problems during the research of the fauna of Qinling. To clarify the Qinling fauna, some similar species are compared carefully to figure out the correct name, especially some taxa from the genus *Oberea*. These results are presented below.

Materials and methods

Specimens studied are deposited in the following institutions, museums or private collections:

CCCC: Collection of Chang-Chin Chen, Tianjin, China

HBU: Hebei University, Baoding, Hebei, China

IZAS: Institute of Zoology, Chinese Academy of Sciences, Beijing, China

M.-Y. Lin, S.-Q. Ge

MHNG: Muséum d'Histoire Naturelle de Genève, Switzerland
MNHN: Muséum National d'Histoire Naturelle, Paris, France
NCHU: National Chung Hsing University, Taichung, Taiwan, China.
NMW: Naturhistorisches Museum Wien, Wien, Austria
NWAUFU: Northwest A&F (Agriculture and Forestry) University,
Yangling, Shaanxi, China
SMNS: Staatliches Museum für Naturkunde, Stuttgart, Germany
TD: Type depository
TL: Type locality

Taxonomy

***Oberea (Amaurostoma) donceeli* Pic, 1907**

Figs. 1-2

Oberea donceeli Pic, 1907: 23. TL: China, Tianjin. TD: MNHN.

Oberea donceeli; Gressitt, 1942: 40; Gressitt, 1951: 592; Breuning, 1962:
186.

Remarks. We chose the female in Fig. 2 as lectotype, though the right antennae is lost, because it beared the locality label. The female in Fig. 1 is in better condition, however, the type locality was not clearly labeled. It still can be a good paralectotype because it bears Pic's handwritten name label and was from M. Pic's collection.

Oberea Donceeli m. *atrosignata* Breuning, 1947, *Oberea donceeli atrosignata*; Breuning, 1960 and *Oberea donceeli* v. *atrosignata*; Breuning, 1962 are all unavailable infrasubspecific names (Li et al., 2015). The descriptions were based on a male specimen from Tianjin with the prothorax having black lateral markings while part of elytra are black (Breuning, 1947; Breuning, 1962). However, it might be another species. We tried to find the "type specimen" from MHNG but failed (Morati, 2003; personal searching by Meiyang Lin, Zhu Li and Giulio Cuccodoro from 2008 to 2017). It is not in MNHN either (Meiyang Lin's research).

Records from Shaanxi, Shanxi, Hebei, Gansu, Ningxia, Inner Mongolia, Mongolia and Russia should be based on specimens of *O. ressl*i Demelt, 1963.

Type specimens examined. Lectotype (Fig. 2, designated herein),

female, China, Tien-Tsen (MNHN); paralectotype (Fig. 1, designated herein), 1 female, China, (MNHN, ex Coll. M. Pic).

Other specimens examined. Beijing: 1 male, Beijing, 1952.VII.7 (IZAS). Tianjin: 4 males, Tientsin, 1932.VII.9 (MNHN, ex. Coll. E. Licent); 1 male, Tientsen (MNHN).

Distribution. China: Beijing (new record), Tianjin.

Oberea (Amaurostoma) resslı Demelt, 1963

Figs. 3-7

Oberea (Amaurostoma) resslı Demelt, 1963: 150, figs 5a–b. TL: Turkey, Kizilcahammam. TD: SMNS.

Oberea donceeli v. *obscuripennis* Pic, 1939: 3. TL: China, Shanxi. TD: MNHN. [infrasubspecific name, according to Li *et al.*, 2015: 579]

Oberea donceeli v. *obscuripennis*; Breuning, 1962: 187.

Diagnosis. This species differs from *O. donceeli* by antennae and elytra being black, and the prothorax with a black longitudinal stripe laterally on each side.

Remarks. *Oberea donceeli* v. *obscuripennis* Pic, 1939 is an unavailable infrasubspecific name (Li *et al.*, 2015). There are two “type” specimens of *Oberea donceeli* v. *obscuripennis* Pic, 1939 deposited in MNHN, both having Pic’s handwritten label and “TYPE” red label. Based on Etapes des Voyages du P. Licent S.J. dans la Chine 1914-1937, Ling T’eou is located in Shanxi Province, South of Zuoquan County and North of Changzhi County, while TSI LI YU is located in Shanxi Province, Huozhou City, Linfen, Qiliyu (Miroshnikov & Lin, 2015). We followed Li (2014) to treated it as *Oberea (Amaurostoma) resslı* Demelt, 1963.

Oberea nigriceps n. *obscuripennis* Breuning, 1967 is deemed subspecific and available (Lingafelter & Nearn, 2013) and is not preoccupied by *Oberea donceeli* v. *obscuripennis* Pic, 1939. It will be treated in the next taxon.

Specimens examined. Hebei: 1 male 1 female, Weixian, Xiheyang, alt. 860m, 1964.VI.7, leg. Bing-Qian Li (IZAS, IOZ(E)2002907-08); 1 female, same data but leg. Yin-Heng Han (IZAS, IOZ(E)2002909); 1 male, Weixian, Chiyabaogou, 2009.VI.23, leg. Jun-Tong Lang, Zhen-Hua Gao (HBU, Fig. 5). Shanxi: 1 female, Zhongtiaoshan, 1964.VIII.19, leg. Io Chou (Yao Zhou) (NWFU, CO027423);

M.-Y. Lin, S.-Q. Ge

1 male (Fig. 6, “type” of *Oberea donceeli* v. *obscuripennis* Pic, 1939), Ling t’ou, 1934.VI.26 (MNHN); 1 female (Fig. 7, “type” of *Oberea donceeli* v. *obscuripennis* Pic, 1939), Chansi. S.o, TSI LI YU, 2100 m, 1935.VI.28, E. Licent (MNHN). Inner Mongolia: 1 male, Xing’an Meng, Zhongqi (Middle Banner), 1983. VII.10, leg. Xiao-Yu Wang (IZAS, IOZ(E)2002914). Shaanxi: 1 male, 2 females, Danfeng County, Caichuanzhen, Dabaigou, alt. 1200m, 110°19’6”E, 33°53’25”N, 2014.VII.1, leg. Zheng-Zhong Huang or Zhong-Yi Suo (IZAS, IOZ(E)2002902-04); 1 male, Shaanxi Prov., Zhen’an County, Yungaisizhen, Heiyaogou Linchang, alt. 1217m, 33°29’26”N, 109°0’38”E, 2014.VI.20, leg. Zhong-Yi Suo (IZAS, IOZ(E)2002900, Fig. 3); 1 female, Danfeng County, Caichuanzhen, alt. 1070m, 33°53’14”N, 110°18’42”E, 2014.VI.30, leg. Zheng-Zhong Huang (IZAS, IOZ(E)2002905, Fig. 4); 1 female, Liuba County, Dahongqu, 2500m, 1998.VII.20, leg. Jun Chen (IZAS, IOZ(E)2002906). Gansu: 1 male 1 female, Minxian, Linghongcun, alt. 2600 m, 1998.VII.8, leg. Jian Yao (IZAS, IOZ(E)2002910-11). Ningxia: 1 male 1 female, Toudaohu, 1976.VI.17 (IZAS, IOZ(E)2002912-13).

Distribution. China: Hebei, Shanxi, Inner Mongolia, Shaanxi, Gansu, Ningxia; Mongolia, Russia, Turkey.

Other information. Two pictures of a female specimen from Dornot Choybalsan of Mongolia are available from the website <https://apps2.cdfa.ca.gov/publicApps/plant/bycidDB/wdetails.asp?id=34561&w=0>, and one picture from Russia is available from the website <http://cerambycidae.org/taxa/donceeli-Pic-1907>. Therefore, this species distributes in both Mongolia and Russia.

***Oberea (Oberea) angustata* Pic, 1923**

Figs. 8-9

Oberea angustata Pic, 1923: 11. TL: Vietnam, Tonkin. TD: MNHN.

Oberea nigriceps n. *obscuripennis* Breuning, 1967b: 40. TL: Vietnam, Tonkin. TD: MHNG. **syn. nov.**

Oberea angustata; Breuning, 1962: 183.

Remarks. *Oberea nigriceps* n. *obscuripennis* Breuning, 1967 is deemed subspecific and available (Lingafelter & Nearn, 2013). It “comme m. *thibetana* Pic, mais avec les elytres de la coloration de

la m. *changi* Gress.” (Breuning, 1967b). Kurihara (2009) synonymized *thibetana* Pic and *changi* Gressitt with *O. distinctipennis* Pic, 1902 and *O. walkeri* Gahan, 1894 respectively. However, *obscuripennis* Breuning, 1967 was not mentioned in his review of the *Nigriceps* Species-group (Kurihara, 2009). According to the first author’s comparison of the type specimens, *Oberea nigriceps* n. *obscuripennis* Breuning, 1967 is considered as a new synonym of *Oberea angustata* Pic, 1923. These two holotypes not only having all characters including coloration matching with each other, but also having exactly the same locality labels, indicating they were collected in the same place and same time. The report from Fujian province can not be confirmed at this time.

Type specimens examined. Holotype of *Oberea angustata* Pic, 1923 (Fig. 8), male, Vietnam, Tonkin, Montes Mauson, 2000-3000 feet, April-May leg. H. Fruhstorfer (MNHN). Holotype of *Oberea nigriceps* n. *obscuripennis* Breuning, 1967 (Fig. 9), male, Vietnam, Tonkin, Montes Mauson, 2000-3000 feet, April-May leg. H. Fruhstorfer (MHNG).

Distribution. Vietnam.

***Oberea (Oberea) rubroantennalis* sp. nov.**

Figs. 10-12

Oberea bicoloricornis v. *rubroantennalis* Breuning, 1960: 38; 1962: 186.

TL: China, Sichuan. TD: MHNG. [unavailable name, according to Li et al., 2015: 579]

Oberea bicoloricornis m. *rubroantennalis*; Breuning, 1967a: 821.

Description (female). Body slender, length ca. 14.5 mm, width ca. 2.5 mm. Head black, antennae with first two segments black brown, with a wide dark stripe dorsolaterally, remaining segments brown. Prothorax and scutellum brown. Elytra black brown, with margins darker than discal region, punctures black. Mostly brown colored in ventral view, except the metasternite, second and third ventrites with some black maculae, and the fifth ventrite black (except the basal part). Last visible tergite black (Fig. 10a). Legs mostly brown, except the oblique groove of mid-tibiae, apical half of hind tibiae and first segment of hind tarsi black brown.

Head slightly wider than prothorax. Antennae longer than

body, with 2 segments extending beyond elytral apex. The third segment much longer than scape, third to last almost subequal in length. Pronotum slightly broader than long, with a small callus centrally near base. Scutellum broad, apex with a median notch. Elytra slender, subparallel, without lateral carinae; apices emarginate with short teeth at outer angle; punctures arranged in rows, each elytron with distinct 5 rows in most parts, with 6 to 7 lines on basal part becoming obscure apically. Legs short, hind femora only reach basal third of second ventrite; hind tibiae subequal to hind femora in length, first tarsomere of hind tarsi longer than second tarsomere but shorter than second and third combined.

Diagnosis. This species is very similar to *O. bicoloricornis* Pic, 1915, but can be easily distinguished by the last visible sternite being black. It is also similar to *O. angustata* Pic, 1923, but differs by antennae mostly reddish-brown (except first two antennomeres) and elytral apex transversely truncate (oblique in *O. angustata*).

Remarks. The name *rubroantennalis* was used by Breuning (1960, 1962 and 1967) but in all three instances, the infrasubspecies name is unavailable. We use it for the new species, which means most part of antennae are reddish-brown.

Type specimens examined. Holotype, female (Fig. 10), Shaanxi, Foping County, Changjiaobaxiang, Shangshawocun, 33.5971°N, 108.0136°E, 1215m, 2007.V.29, leg. Mei-Ying Lin (IZAS, IOZ(E) 2002915). Paratypes: 1 female, Shaanxi, Taibaishan, Haopingsi, 1200 m, 1982.VII.18, leg. Miao-Ru Chen (NWFU, CO027609); 1 female (holotype of *Oberea bicoloricornis* v. *rubroantennalis* Breuning, 1960), Szetschuan, Tatsienlu (MHNG).

Distribution. China: Shaanxi, Sichuan.

***Oberea (Oberea) bicoloricornis* Pic, 1915**

Figs. 13-14

Oberea bicoloricornis Pic, 1915: 13. TL: China, Tibet. TD: MNHN.

Oberea bicoloricornis; Gressitt, 1942: 38; Gressitt, 1951: 588; Breuning, 1962: 186.

Remarks. It is only known from Xizang. The other reports (Shaanxi, Fujian, Sichuan) were based on misidentifications.

Type specimen examined. Holotype (Fig. 13), female, Chine, Thibet (MNHN, ex Coll. M. Pic).

Other specimen examined. China, Xizang: 1 female (Fig. 14), Chayu (Zayu), Jigong, alt. 2300m, 1973.VII.7, leg. Fu-Sheng Huang (IZAS).

Distribution. China: Xizang.

***Oberea (Oberea) pupillatoides* Breuning, 1947) stat. reinstated**

Figs. 15-16

Oberea pupillatoides Breuning, 1947b: 145. TL: China, Shaanxi. TD: MHNG.

Oberea depressa v. *pupillatoides*; Breuning, 1960: 32; 1962: 214.

Remarks. This species was treated as a variety of *Oberea (Oberea) depressa* (Gebler, 1825) by Breuning (1960, 1962). However, it differs from *O. depressa* by metathorax being yellowish- brown and the apical half of last visible sternite black. This species is very similar to *O. pupillata* (Gyllenhal, 1817) from Europe and *O. heyrovskyi* Pic, 1927 from Russia and South Korea. Their relationships need further study.

It is not clear if the type locality is Shaanxi or Shanxi. Normally Chansi is for Shanxi while Chensi and Shensi are for Shaanxi, but they can be easily misused. We followed Tavakilian & Chevillotte (2017) to treat it as Shaanxi.

Type specimen examined. Holotype (Fig. 15), female, Chine, province du Chansi, 1926.VI.16 (MHNG).

Other specimens examined. China, Shaanxi: 1 male (Fig. 16), Zhouzhi County, Louguantai Senlingongyuan (Forest garden), alt. 564m, 33.0600°N, 108.3209°E, 2007.V.24, leg. Mei-Ying Lin (IZAS); 1 male, Taibai, 1990.VII (NWFU, CO027611).

Distribution. China: Shaanxi.

***Niponstenostola gressitti* nom. & comb. nov.**

Fig. 17

Saperda nigra Gressitt, 1951: 552, pl. 21, fig. 1. TL: China, Shaanxi. TD: NCHU. [HN]

Saperda (Saperda) nigra: Breuning, 1966b: 669.

Saperda (Compsidia) nigra: Danilevsky, 2010b: 235.

Remarks. The name *Saperda nigra* was preoccupied by *Saperda*

nigra Say, 1827, which currently belongs to the genus *Dorcaschema*. The new name “*gressitti*” is given to *Saperda nigra* Gressitt, 1951 for Gressitt’s contribution to this taxon. Without careful examination of the type specimen, the combination of this taxon is mysterious, though definitely not *Saperda* by the body shape. We temporarily combine it in the genus *Niponstenostola* based on its similarity with one pair of specimens examined (Fig. 18).

Type specimen examined. Holotype (Fig. 17), male (might be female), S. Shensi Prov., Pao-chi Distr., 34°20' N, 107° E, Tsing-sui-ho, 1946.V.30, S.T. Chang (Chang Shu-tsen) (NCHU, through pictures taken by Yu-Long Lin).

Other specimens examined. *Niponstenostola* sp.cf. *gressitti*, Shaanxi: 1 male, Ningshan County, Huoditang, Pingheliang, alt. 2016-2448 m, 33.4716-33.4814 N, 108.4961-108.4911 E, 2007.VI.1, leg. Mei-Ying Lin (IOZ(E)1904899); 1 female, Zhouzhi County, Houzhenzi, 2008, leg. Xiao-Dong Yang (CCCC, B08Y0013).

Distribution. China: Shaanxi.

***Niponstenostola lineata* (Gressitt, 1951) comb. nov.**

Figs. 19-20

Stenostola lineata Gressitt, 1951: 609, pl. 21, fig. 8. TL: China, Shaanxi.
TD: NCHU.

Eumecocera lineata: Hayashi, 1963: 135.

Remarks. This species is newly combined in the genus based on the simple female claws. The male is unknown to us but should have appendiculate claws. The female claws are bifid in the genus *Stenostola* while appendiculate in the genus *Eumecocera*. Since misidentifications are common in this group, the reports from Hubei, Taiwan and Sichuan are doubtful and need further study.

Type specimen examined. Holotype (Fig. 19), female, S. Shenxi Province, Pao-Chi District, Tsing-sui-ho, 1947.VI.18, leg. Chang Shu-tsen (NCHU, through pictures taken by Yu-Long Lin).

Other specimens examined. China, Shaanxi: 3 females, Zhouzhi County, Houzhenzi, Qinlingliang, 2021m, 2007.V.27, leg. Mei-Ying Lin, Jun-Zhi Cui, Li-Jie Zhang.

Distribution. China: Shaanxi.

***Paraglenea soluta* (Ganglbauer, 1887) stat. nov.**

Figs. 21-23

Glenea Fortunei var. *soluta* Ganglbauer, 1887: 22. TL: China, Beijing. TD: NMW.

Paraglenea cinereonigra Pesarini et Sabbadini, 1997: 126, pl. IV, fig. 5. TL: China, Shaanxi. TD: CPS. **syn. nov.**

Remarks. This species was considered as a variety of *Paraglenea fortunei* (Saunders, 1853) for a long time. However, it can be distinguished from *Paraglenea fortunei* (Fig. 24) by the black maculae on the pronotum being more elongated, never rounded or missing, and the black markings on elytra more separated and consistent. It also similar to *Paraglenea swinhoei* Bates, 1866 but without black spots on the lateral sides of the prothorax.

Glenea fortunei var. *soluta* Ganglbauer, 1887 is herein upgraded to species and *Paraglenea cinereonigra* Pesarini et Sabbadini, 1997 is considered as a new synonym of *Paraglenea soluta* (Ganglbauer, 1887).

Type specimen examined. Holotype of *Paraglenea cinereonigra* Pesarini et Sabbadini, male (Fig. 22), Shaanxi, Huashan, 1991.VI.17-21, Dunda (CPS); paratype of *Paraglenea cinereonigra* Pesarini et Sabbadini, 1 female (Fig. 23), Henan, Dengfeng, 1992.VI, Richter (CPS).

Other specimens examined. China, Shaanxi: 1 male, Taibaishan, Haopingsi, 1200 m, 1982.VII.15 (NWAFU); 1 female, Fengxian, 1981.VI (NWAFU, CO028443); 1 male, Ningshan, Huoditang, 1580m, 1998.VIII.14, leg. De-Cheng Yuan (IZAS); 1 male 1 female, same data but 1998.VII.26-27; 1 female, same data but alt. 1580-1650m, 1999.VI.26; 1 male, Ningshan, Huoditang, 1620m, 1979.VII.30, leg. Yin-Heng Han (IZAS); 1 female, Ningshan, Huoditang, Yaquegou, 1600-1700m, 1998.VII.28, leg. Xue-Zhong Zhang (IZAS); 1 female, Ningshan, Huoditanglinchang, 1538m, 2007.VI.2, leg. Mei-Ying Lin by light trap (IZAS); 1 male, same data but 2007.VII.21; 1 female, Ningshan, Huoditang, 1985.VIII.30 (NWAFU, CO028444); 1 male, Ningshan, Huoditang, 1984.VIII.16 (NWAFU, CO028445); 1 female, Zhouzhi County, Banfangzi, 2006.VII.20, leg. Mei-Ying Lin by light trap (IZAS); 2 females, Zhouzhi County, Houzhenzi, 1350m, 1999.VI.24, leg. You-Wei

M.-Y. Lin, S.-Q. Ge

Zhang, Chao-Dong Zhu (IZAS); 1 male, Zhouzhi County, Houzhenzizhen, Laoxianchengcun, 1745m, 33.4336°N, 108.447°E, 2007.V.26, leg. Mei-Ying Lin (IZAS); 2 females, Zhouzhi County, Houzhenzizhen, Laoxianchengcun to Qinlingliang, 1745-2021m, 33.8001–33.8149°N, 107.7471-107.7435°E, 2007.V.27 leg. Mei-Ying Lin (IZAS); 1 female, Taibai, 1980.VII.17, leg. Wei-Dong Li (IZAS); 1 female, Lveyang, 1981.VI (IZAS); 2 males 5 females, Qinlingshan, 6km East of Xunyangba, 1000-1300m, 2000.V.23-VI.13, C. Holzschuh (CCH); 1 female, Zhashui County, Yingpanzhen, Hongmiaohacun, 1100m, 2007.VI.3, leg. Mei-Ying Lin (IZAS); 1 male, Liuba, Weituogou, 1600m, 1998.VII.21, leg. Xue-Zhong Zhang (IZAS, IOZ(E) 1904783); 1 male 1 female, Ningxi, 1981.VI (IZAS); 1 female, Qinling, Honglinglinchang, 1580m, 1973.VII.21, leg. Xue-Zhong Zhang (IZAS); 1 female, Qinlingzhiwuyuan, Daxiagu, 925m, 33.9282°N, 108.3525°E, 2012.VII.5, leg. Yi Hua (IZAS, Ceram-136); 1 female, Wugong, 1957.VIII (NWAUFU); “Holotype” of *Paraglenea fortunei* m. *conjunctefasciata* Breuning, 1 female, Szteschuan, Tahsienlu (MHNG, ex Coll. Breuning).

Distribution. China: Beijing, Hebei, Shaanxi, Henan, Hubei, Zhejiang, Sichuan.

Funding This research was supported by a special fiscal fund (No. 2013-19) from Shaanxi Province for “Insect fauna of Qinling Mountains Region,” a grant (No. O529YX5105) from the Key Laboratory of the Zoological Systematics and Evolution of the Chinese Academy of Sciences, the National Natural Science Foundation of China (31472029 and J1210002) and the China Scholarship Council (CSC, File No. 201704910195).

Acknowledgement. We are grateful to Olivier Montreuil and Gérard Tavakilian (MNHN), Giulio Cuccodoro and Bernard Landry (MHNG), Changchin Chen (CCCC), Lin Lv and Na Qiao (NWAUFU) for giving access to the collections, to Yu-Long Lin (Taiwan) for offering two type pictures. We wish to express our sincere thanks to Larry Bezark (California, USA) for improving this manuscript.

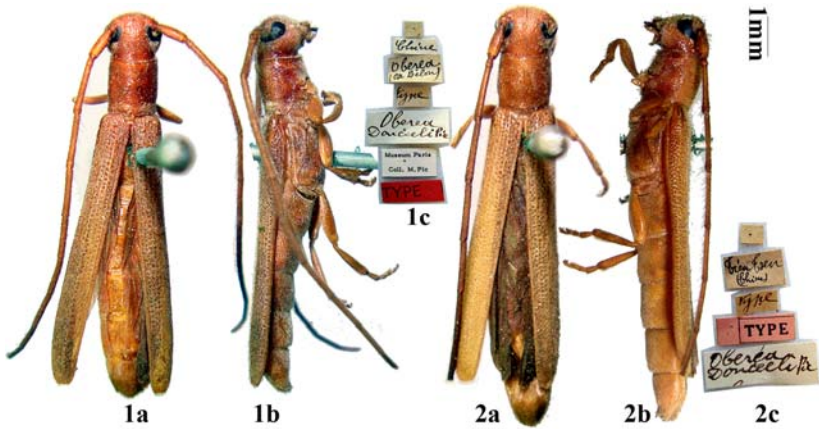
REFERENCES

- Breuning S. 1947a. Quelques nouvelles formes des genres *Nupserha* Thomson, *Oberea* Mulsant, *Conizonia* Fairmaire et *Phytoecia* Mulsant. - *Miscellanea Entomologica* 44: 57-61.
- Breuning S. 1947b. Nouveaux cérambycides paléarctiques (Col.) (4e notes). - *Miscellanea Entomologica*. 43 [1946]: 141-149.
- Breuning S. 1960. Révision systématique des espèces du genre *Oberea* Mulsant du globe (Col., Cerambycidae). (1ème partie). - *Frustula Entomologica*. 3: 1-60.
- Breuning S. 1962. Revision systématique des espèces du genre *Oberea* Mulsant du globe (Col., Cerambycidae). (3ème partie). - *Frustula Entomologica* 5: 141-232 + vi.
- Breuning S. 1967a. Catalogue des Lamiaires du Monde (Col. Céramb.). - Verlag des Museums G. Frey, Tutzing bei München. (10): 771-864.
- Breuning S. 1967b. Description d'une espèce et de quatre variétés nouvelles de Saperdini de ma collection (Col. Cerambycidae). - *Bulletin de la Société Entomologique de Mulhouse*. 1967: 40.
- Demelt T.C. 1963. Beitrag zur Kenntnis der Cerambycidenfauna Kleinasiens und 13. Beitrag zur Biologie palaearkt. Cerambyciden, sowie Beschreibung einer neuen *Oberea*-Art. - *Entomologische Blätter für Biologie und Systematik der Käfer*. 59 (3): 132-151, 5 figs, 1 carte.
- Etapas des Voyages du P. Licent S.J. dans la Chine 1914-1937. 1984. Natural Museum of Tianjin, Archives. 130 pp. + 8 p., Liste des sons chinois [in French with Chinese explanations].
- Ganglbauer L. 1887. Neue Cerambyciden von Peking. - *Horae Societatis Entomologicae Rossicae*. 21: 21-24.
- Gressitt J.L., 1942. A provisional synopsis of the longicorn beetles of China, II - subfamily Lamiinae. Special Publication of the Lingnan Natural History Survey & Museum. 8: 1-44.
- Gressitt J.L. 1951. Longicornia Volume II: Longicorn Beetles of China. Paul Lechevalier, Paris, France. 667 pp, 22 pls.
- Hayashi M. 1963. Revision of some Cerambycidae on the basis of the types of the late Drs. Kano and Matsushita, with descriptions of three new species. *Insecta Matsumurana* 25 (2): 129-136.
- Kurihara T. 2009. Review of the Genus *Oberea* from Continental Asia (Coleoptera, Cerambycidae) Part I: *Nigriceps* Species-group. - *Special Bulletin of the Japanese Society of Coleopterology*, Tokyo. (7): 391-420, 90 figs.
- Li Z. 2014. Taxonomy of *Oberea* Dejean, 1835 from China (Coleoptera: Cerambycidae: Lamiinae). A Dissertation of Southwest University. 281 pp.
- Li Z., Cuccodoro G., Chen L. 2015. List of unavailable infrasubspecific names originally published in *Oberea* Dejean, 1835, with nomenclatural notes on the genus (Coleoptera: Cerambycidae). - *Zootaxa*. 4034(3): 577-586.
- Lingafelter S.W., Nearn E.H. 2013. Elucidating Article 45.6 of the International Code of Zoological Nomenclature: A dichotomous key for the determination of subspecific or infrasubspecific rank. - *Zootaxa*. 3709(6) :

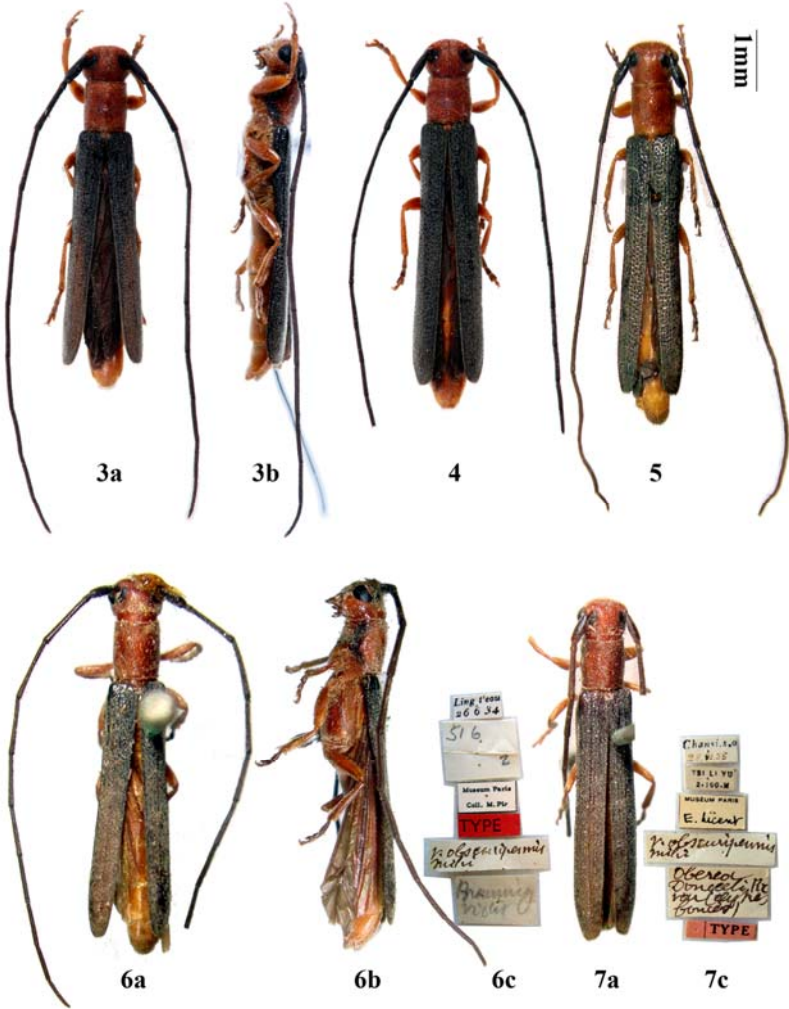
M.-Y. Lin, S.-Q. Ge

597-600.

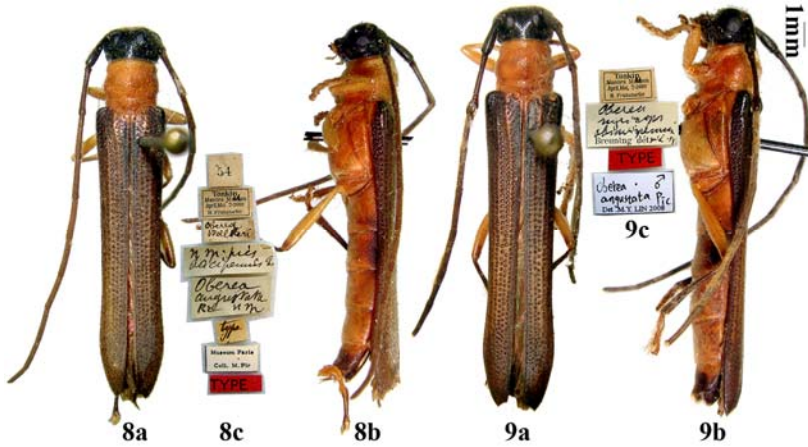
- Miroshnikov A.I., Lin M.-Y. 2015. A review of the genus *Neorhamnusium* Hayashi, 1976 (Coleoptera: Cerambycidae), with description of three new species. - Russian Entomological Journal. 24(4): 291-306, 44 figs.
- Morati J., 2003. Catalogue des types de Lamiinae (Coleoptera, Cerambycidae) conservés au Muséum d'histoire naturelle, Genève. - Revue Suisse de Zoologie. 110(1): 155-206.
- Pesarini C., Sabbadini A. 1997. Notes on new or poorly known species of Asian Cerambycidae (Insecta, Coleoptera). Il Naturalista Valtellinese. Atti del Museo Civico di Storia Naturale di Morbegno. 7: 95-129.
- Pic M. 1907. Sur divers longicornes de la Chine et du Japon. Pp. 20-25. - Matériaux pour servir à l'étude des longicornes. 6me cahier, 2ème partie. Saint-Amand (Cher): Imprimerie Bussière. 28 pp.
- Pic M. 1916. Notes diverses, descriptions et diagnoses (Suite.). - L'Échange, Revue Linnéenne. 32(375): 9-11.
- Pic M. 1923. Nouveautés diverses. - Mélanges Exotico-Entomologiques. 39: 3-32.
- Pic M. 1939. Coléoptères nouveaux, principalement de Chine. - L'Échange, Revue Linnéenne. 55(476): 1-4.
- Tavakilian G., Chevillotte H. 2017 Titan: base de données internationales sur les Cerambycidae ou Longicornes. Available from: URL: <http://titan.gbif.fr/> [accessed on October. 5, 2017]



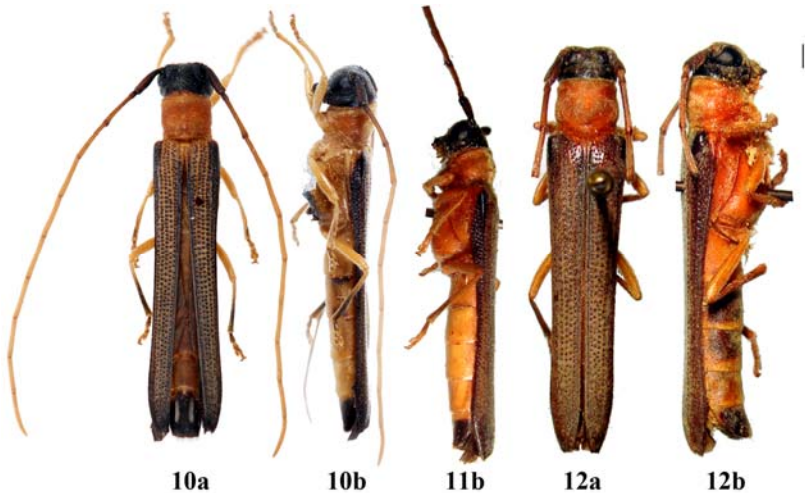
Figures 1-2. *Oberea (Amaurostoma) donceeli* Pic, 1907, habitus. 1. paralectotype, female, from China, Tianjin. 2. lectotype, female, from China, Tianjin. a. dorsal view. b. lateral view. c. labels. Scale 1 mm. c. Not to scale.



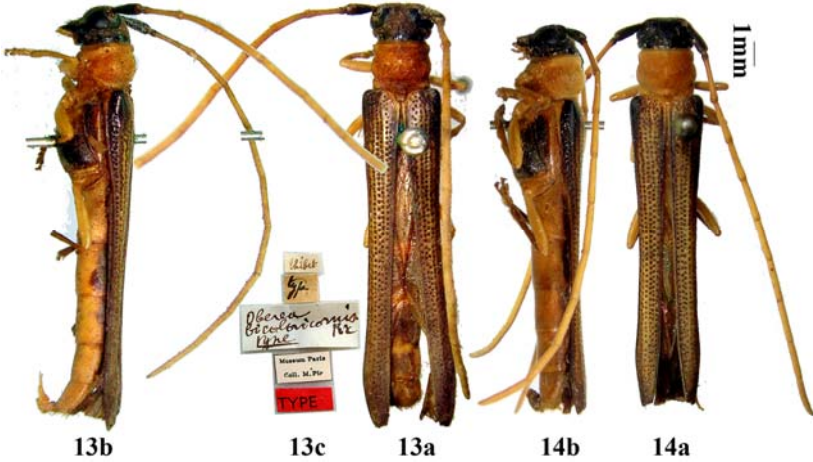
Figures 3-7. *Oberea (Amaurostoma) ressi* Demelt, 1963, habitus. 3, male, from China, Shaanxi. 4. female, from China, Shaanxi. 5. male, from China, Hebei. 6-7. "syntypes" of *Oberea donceeli* v. *obscuripennis* Pic, 1939, females, from China, Shanxi. a. dorsal view. b. lateral view. c. labels. Scale 1 mm. c. Not to scale.



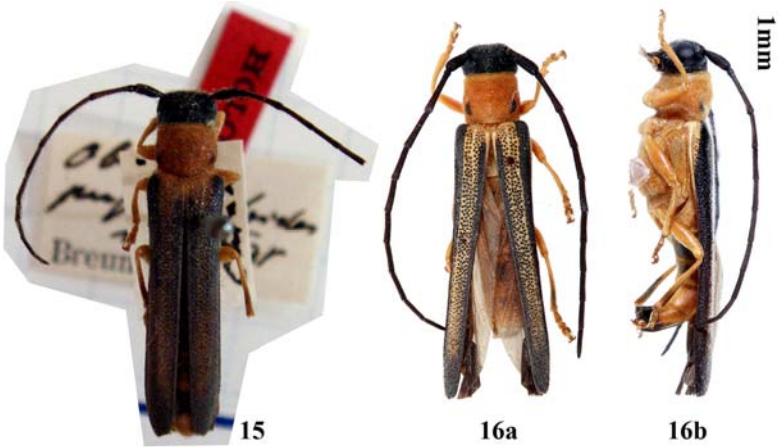
Figures 8-9. *Oberea (Oberea) angustata* Pic, 1923, habitus. 1. Holotype of *Oberea angustata* Pic, 1923, male, from Vietnam, Tonkin. 2. Holotype of *Oberea nigriceps* n. *obscuripennis* Breuning, 1967, female, from Vietnam, Tonkin. a. dorsal view. b. lateral view. c. labels. Scale 1 mm. c. Not to scale.



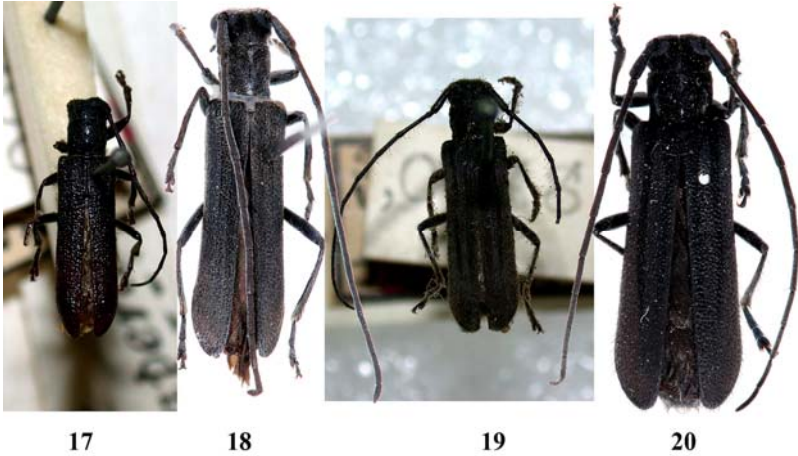
Figures 10-12. *Oberea (Oberea) rubroantennalis* sp. nov., habitus. 10. Holotype, female, from China, Shaanxi. 11. paratype, female, from China, Shaanxi. 12. “Holotype” of *Oberea bicoloricornis* v. *rubroantennalis* Breuning, 1960, female, from China, Sichuan. a. dorsal view. b. lateral view. Scale 1 mm. 11b. Not to scale.



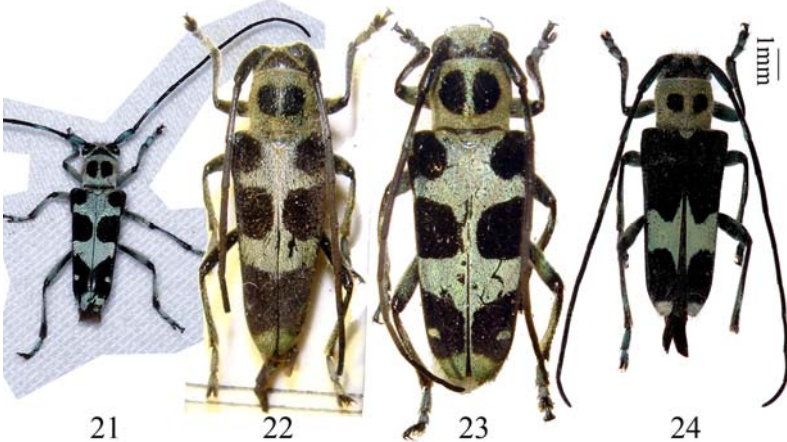
Figures 13-14. *Oberea (Oberea) bicoloricornis* Pic, 1915, habitus. 13 Holotype, female, from China, Tibet. 14. male, from China, Xizang. a. dorsal view. b. lateral view. c. labels. Scale 1 mm. c Not to scale.



Figures 15-16. *Oberea (Oberea) pupillatoides* Breuning, 1947, habitus. 15. Holotype, female, from China, Chansi. 16. male, from China, Shaanxi. a. dorsal view. b. lateral view. Scale 1 mm. 14. Not to scale.



Figures 17-20. *Niponstenostola* spp., habitus. 17. Holotype of *Saperda nigra* Gressitt, 1951 = *Niponstenostola gressitti* Lin et Ge, male, from China, Shaanxi. 18. *Niponstenostola* sp.cf. *gressitti*, male, from China, Shaanxi. 19-20. *Niponstenostola lineata*. 19. holotype of *Stenostola lineata* Gressitt, 1951, female, from China, Shaanxi. 20. female, from China, Shaanxi. Not to scale.



Figures 21-24. *Paraglenea* spp., habitus. 21-23. *Paraglenea soluta* (Ganglbauer, 1887). 21. from China, Beijing. 22-23. Types of *Paraglenea cinereonigra* Pesarini et Sabbadini, 1997. 22. Holotype, male, from China, Shaanxi. 23. paratype, female, from China, Henan. 24. *Paraglenea fortunei* (Saunders, 1853), male, from China, Shaanxi. Scale 1 mm. 21 & 24. Not to scale.

Received: 13.10.2017

Accepted: 17.10.2017