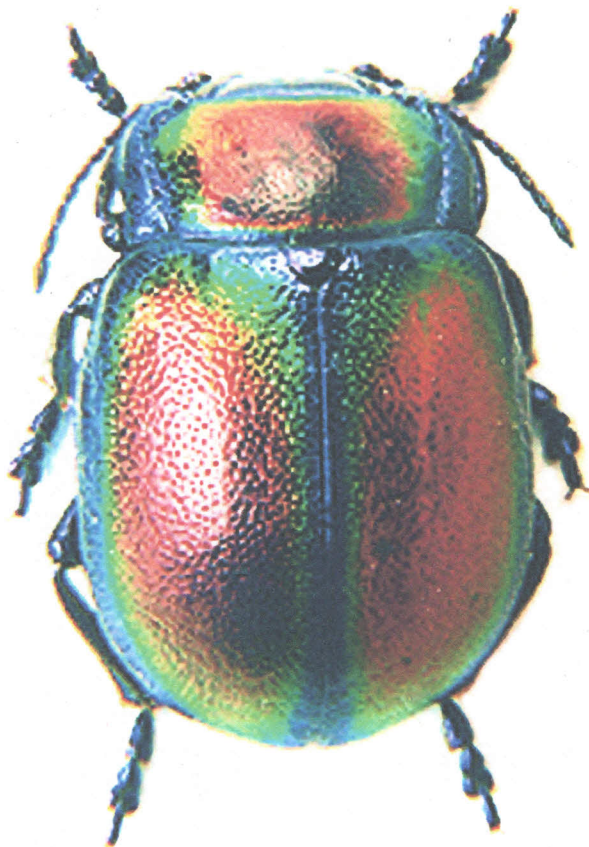


A MONOGRAPH OF THE
GENUS *CHRYSOLINA*
MOTSCHULSKY, 1860
(COLEOPTERA:
CHRYSOMELIDAE)
OF THE WORLD. PART 1.

ANDRZEJ O. BIENKOWSKI



Moscow. 2007



Plate 1: 1 — *Chrysolina confossa*, male, 8.2mm (Algeria: Boghar); 2 — *Ch. fuliginosa galii*, female, 9.4mm (S. France); 3 — *Ch. lepida gastonis*, female, 7.0mm (Algeria: Megriss Mt., 1600m); 4 — *Ch. fuliginosa coriacea*, male, 8.6mm (Spain).



1



2



3



4

Plate 2: 1 — *Chrysolina aeruginosa aeruginosa* (ab. *dimidiata*), female, 7.4mm (Mongolia: Ubsu Nur Aimak: Malgin); 2 — *Ch. centralasiae*, female, 7.0mm (Russia: Irkutsk reg.: Bratsk); 3 — *Ch. perforata turczaninoffi*, female, 7.9mm (Russia: Transbaikalia: Kiakhta); 4 — *Ch. peninsularis*, female, 9.7mm (China: Zhejiang Prov.).



Plate 3: 1 — *Chrysolina aeruginosa poricollis*, male, 6.6mm (China); 2 — *Ch. arctica*, female, 7.0mm (Russia: Wrangel Isl.: Somnitelnaya Bay); 3 — *Ch. perforata perforata*, male, 6.4mm (Russia: Tuva: Erzin); 4 — *Ch. purpurata*, female, 7.4mm (Kazakhstan: Semipalatinsk reg.: Mukur river).



Plate 4: 1 — *Chrysolina auripennis schaefferi*, male, 7.8mm (USA: Arizona);
 2 — *Ch. mauroi*, male, holotype, 5.5mm (China: Sichuan Prov.: Kangding
 Distr.: Tagu, 3500m); 3 — *Ch. koltzei brunneipennis*, male, 6.8mm (Russia:
 Sakhalin Isl.: Novoalexandrovsk); 4 — *Ch. koltzei koltzei*, male, 6.6mm (Russia:
 Krasnoyarsk Krai: Nazarovo Distr.).



1



2



3



4

Plate 5: 1 — *Chrysolina koltzei lamii*, male, 7.4mm (Japan: Hokkaido: Yesso); 2 — *Ch. basilaris*, male, 8.6mm (USA: California); 3 — *Ch. auripennis auripennis*, male, 7.2mm (USA: New Mexico); 4 — *Ch. inornata*, male, 6.6mm (patria incognita).



Plate 6: 1 — *Chrysolina stalii*, female, syntype, 8.3mm (China), published with permission of BMNH, London; 2 — *Ch. watanabei*, female, paratype, 8.0mm (Japan: Hokkaido: Sapporo); 3 — *Ch. lineella*, male, 7.0mm (Russia: Primorski Krai: Jakovlevka); 4 — *Ch. lineigera*, female, 6.6mm (Russia: Amur reg.).

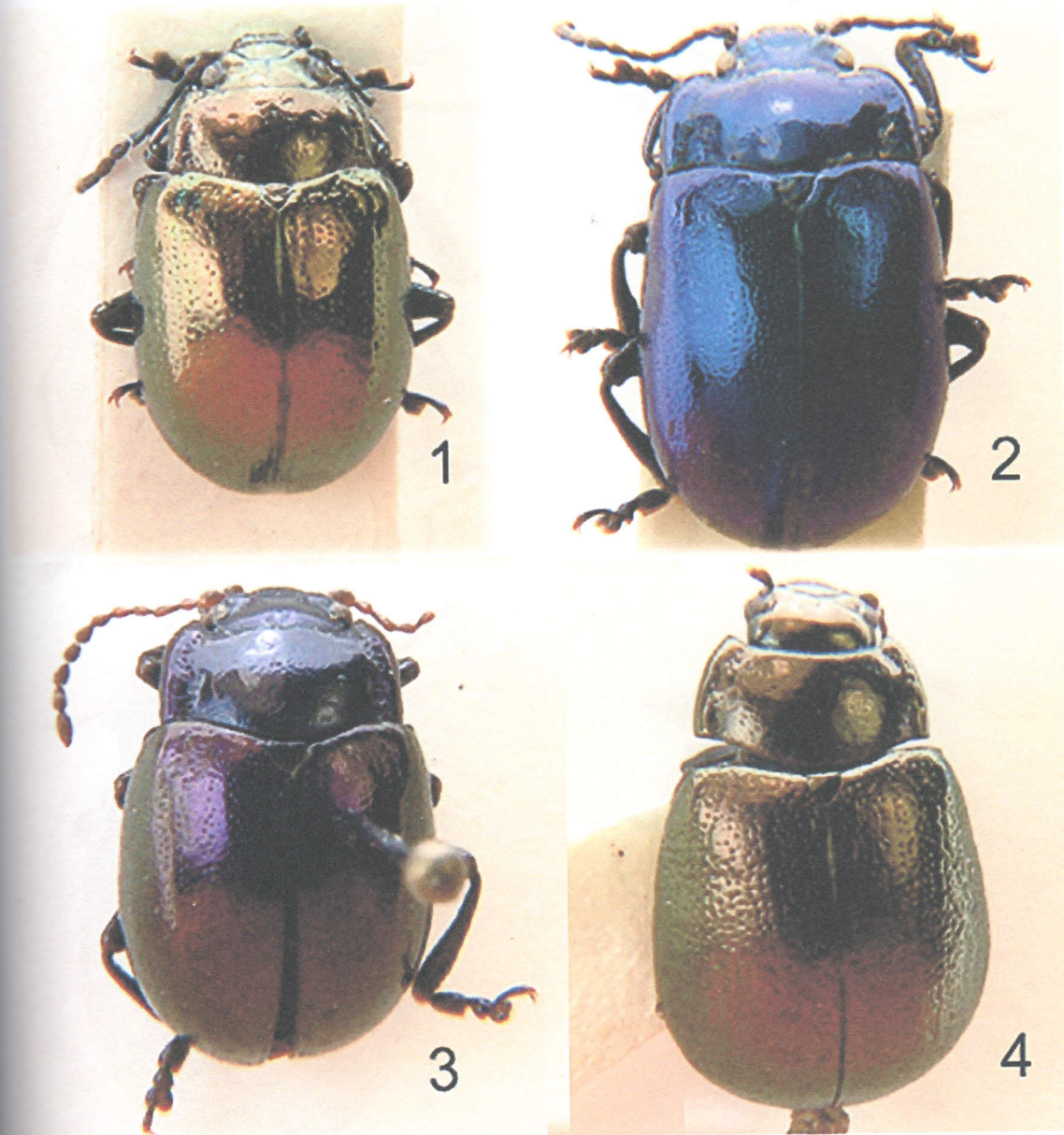


Plate 7: 1 — *Chrysolina aurichalcea*, male, 6.4mm (Russia: Moscow reg.); 2 — *Ch. asclepiadis asclepiadis*, male, 7.9mm (Switzerland: Ticino: Cevio); 3 — *Ch. asclepiadis bohémica*, male, 6.1mm (Ukraine: Kiev reg.: Belaya Tserkov); 4 — *Ch. eurina*, female, 7.0mm (Russia: Moscow reg.: Lukhovitsy Distr.: Chiornaja Vill.).

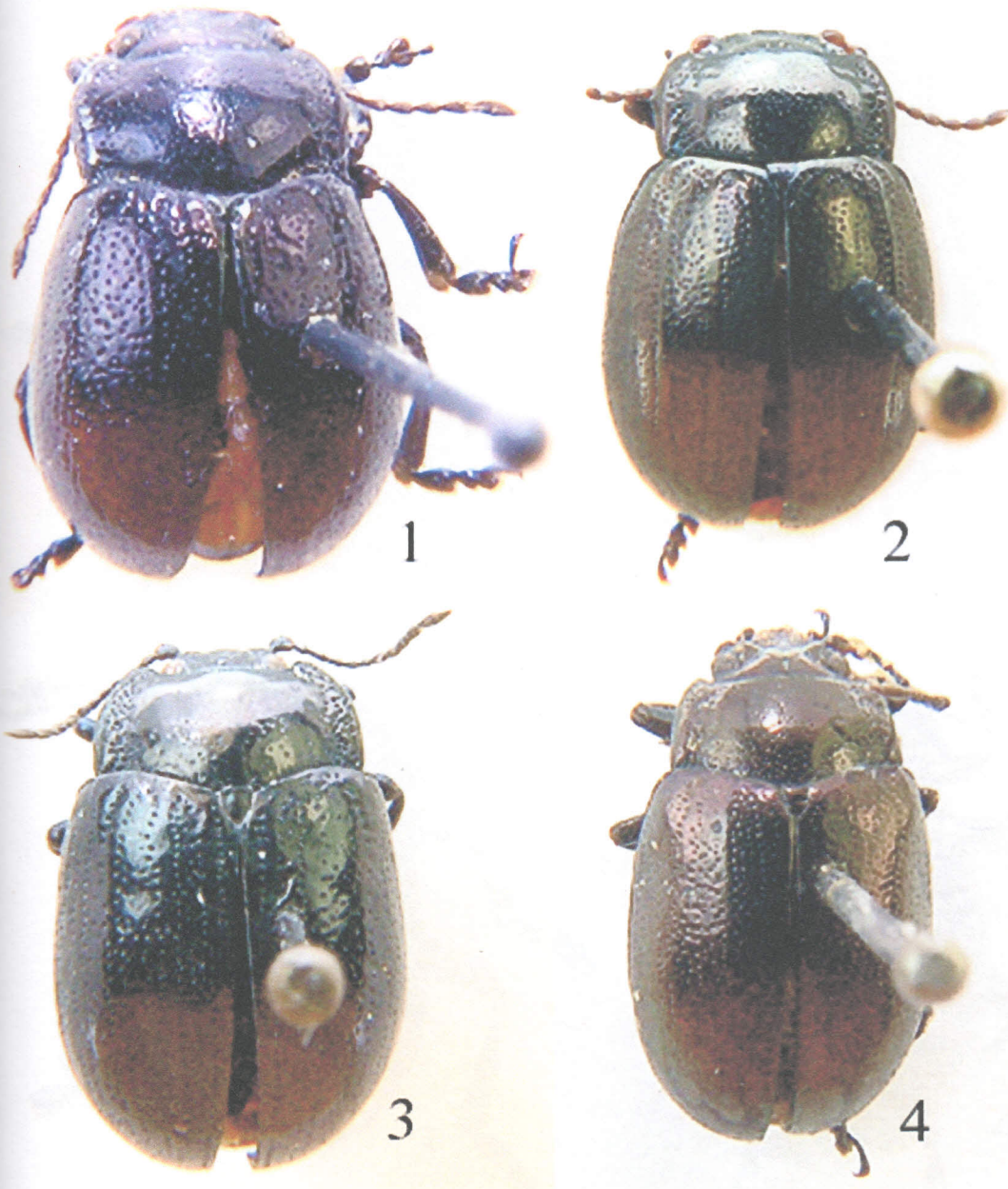


Plate 8: 1 — *Chrysolina neglecta*, male, paratype, 6.1mm (Russia: Khabarovsk Krai: Khekhtsyur Ridge); 2 — *Ch. pala*, male, 6.7mm (Russia: Khabarovsk); 3 — *Ch. gensenensis*, female, 7.3mm (China: Shanghai); 4 — *Ch. quadrangulata*, male, paralectotype, 6.2mm (Russia: Transbaikalia).



Plate 9: 1 — *Chrysolina relucens*, female, 6.6mm (Russia: White Sea shore: Kandalaksha Bay: 12km SE Poyakonda); 2 — *Ch. schatzmayri*, male, 7.6mm (Italy: Gulf of Venice: Grado Isl.); 3 — *Ch. angusticollis*, male, 8.3mm (Japan: Hokkaido: Sapporo); 4 — *Ch. aino*, female, paratype, 8.9mm (Japan: Hokkaido: Sapporo).

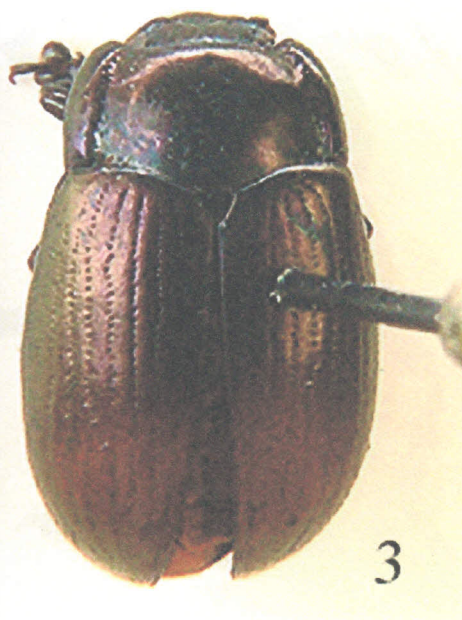


Plate 10: 1 — *Chrysolina porosirensis*, female, paratype, 7.2mm (Japan: Hokkaido: Hidaka Mt., Porosiri Mt.); 2 — *Ch. borochoensis*, male (*Ch. naratica*, paratype), 5.4mm (China: Xinjiang: SSE Tekes, Narat, 3400m); 3 — *Ch. ballioni*, male, 6.4mm (Tien Shan: "Ala Tau"); 4 — *Ch. boeberi*, male, 7.2mm (Russia: Okhotsk Sea shore).

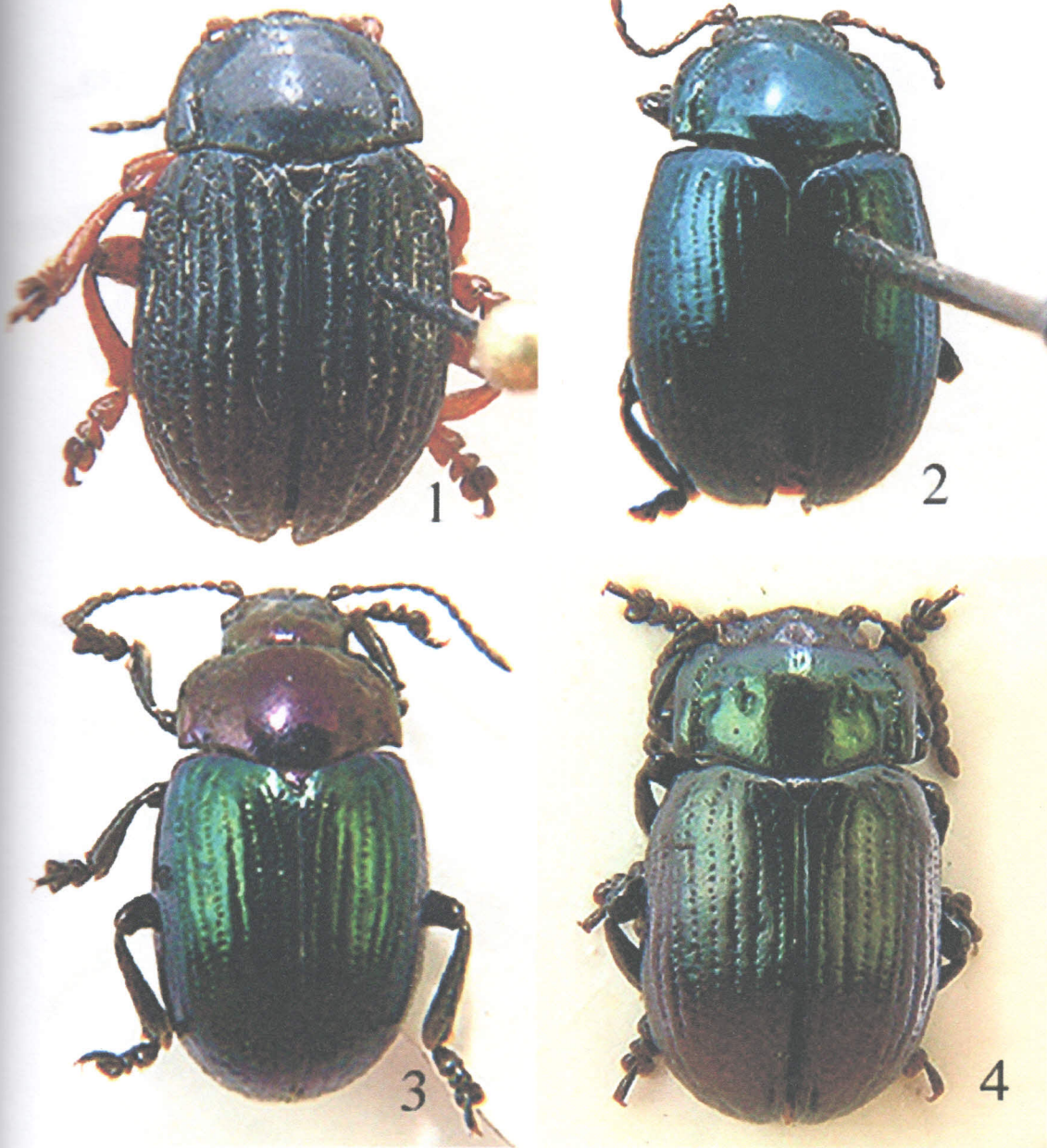


Plate 11: 1 — *Chrysolina bungei*, male, 6.2mm (Russia: New Siberian Isls.: B. Liakhov Isl.); 2 — *Ch. kryzhanovskii*, male, 5.4mm (SE Kazakhstan: Kungei ridge, Poznakovka riverhead, 2700m); 3 — *Ch. boreosinica*, male, holotype, 6.0mm (China: Sinkiang: upp. Kunges, 2800–2850m); 4 — *Ch. saurica*, male, 5.6mm (Tien Shan: Saur ridge, 2200m).



Plate 12: 1 — *Chrysolina septentrionalis*, male, 5.0mm (Russia: Taimyr Penins.: Taimyr lake); 2 — *Ch. subsulcata*, male, 8.2mm (Russia: Chukot Penins.: Uelen); 3 — *Ch. tastavica*, male, 5.6mm (SE Kazakhstan: Dzhungarian Ala Tau N slope: Abatas ridge); 4 — *Ch. cyanella*, male, 7.0mm (Russia: Altai: Ongudai).

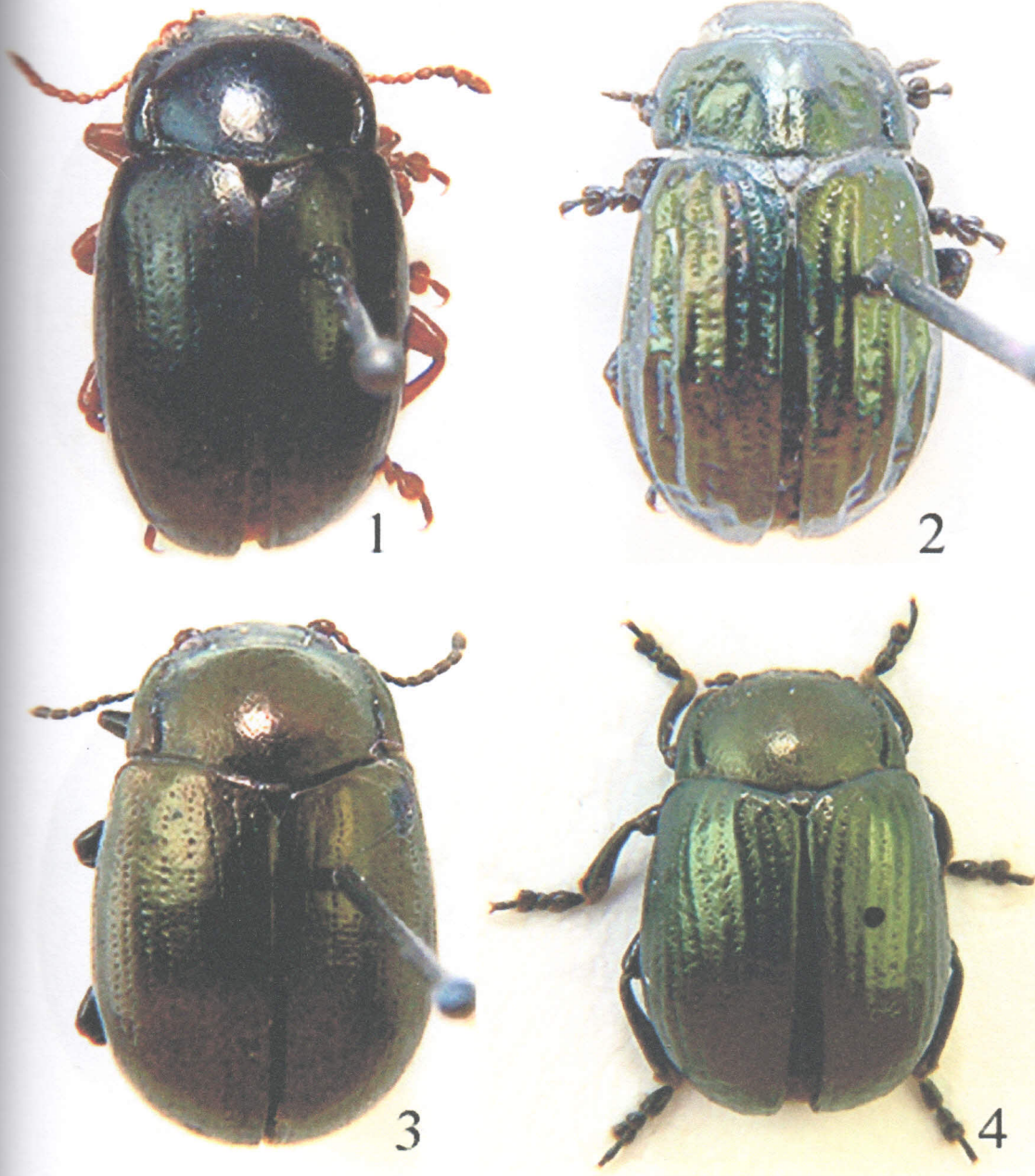


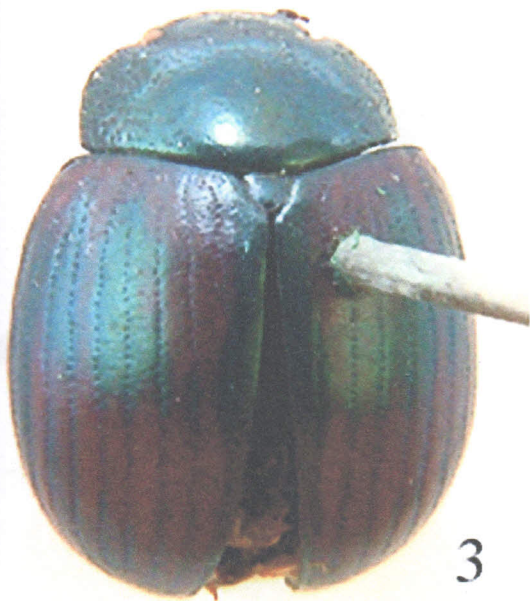
Plate 13: 1 — *Chrysolina valichanovi*, male, 6.0mm (Kazakhstan: Dzhungarian Ala Tau: Maizhurak riverhead); 2 — *Ch. magniceps*, male, 6.7mm (Russia: New Siberian Isls.: B. Liakhov Isl.); 3-4 — *Ch. tundralis*: 3 — male, 6.3mm (European Russia: Lipetsk reg.: Galichia Gora), 4 — female, 7.1 mm (Russia: Komi: B. Synia river).



1



2



3



4

Plate 14: 1 — *Chrysolina striata*, female, 6.0mm (S. Africa: Transvaal); 2 — *Ch. striata* (ab. *fasciata*), male, 4.9mm (Africa: Togo); 3 — *Ch. tetraspilota*, female, 6.6mm (Africa); 4 — *Ch. seriatopora*, male, 5.3mm (Africa: Tunisia: Ain Draham).



Plate 15: 1 — *Chrysolina milleri*, male, 8.5mm ("Ad Rhenum"); 2 — *Ch. compuncta*, male, 7.0mm (Turkey: Stamboul); 3 — *Ch. grata grata*, male, 8.2mm (Georgia: Tbilisi); 4 — *Ch. grata nigrolucens*, male, 9.4mm (Iran: Sultanabad).



1



2



3



4

Plate 16: 1 — *Chrysolina grata derelicta*, female, 9.9mm (Greece: Rhodes Isl.);
2 — *Ch. mellyi*, male, 9.0mm (Afghanistan); 3 — *Ch. salviae salviae*, male,
7.8mm (Montenegro: Podgorica); 4 — *Ch. salviae catalonica*, female, 9.1mm
(Spain: Pasodels Terradets Montses).

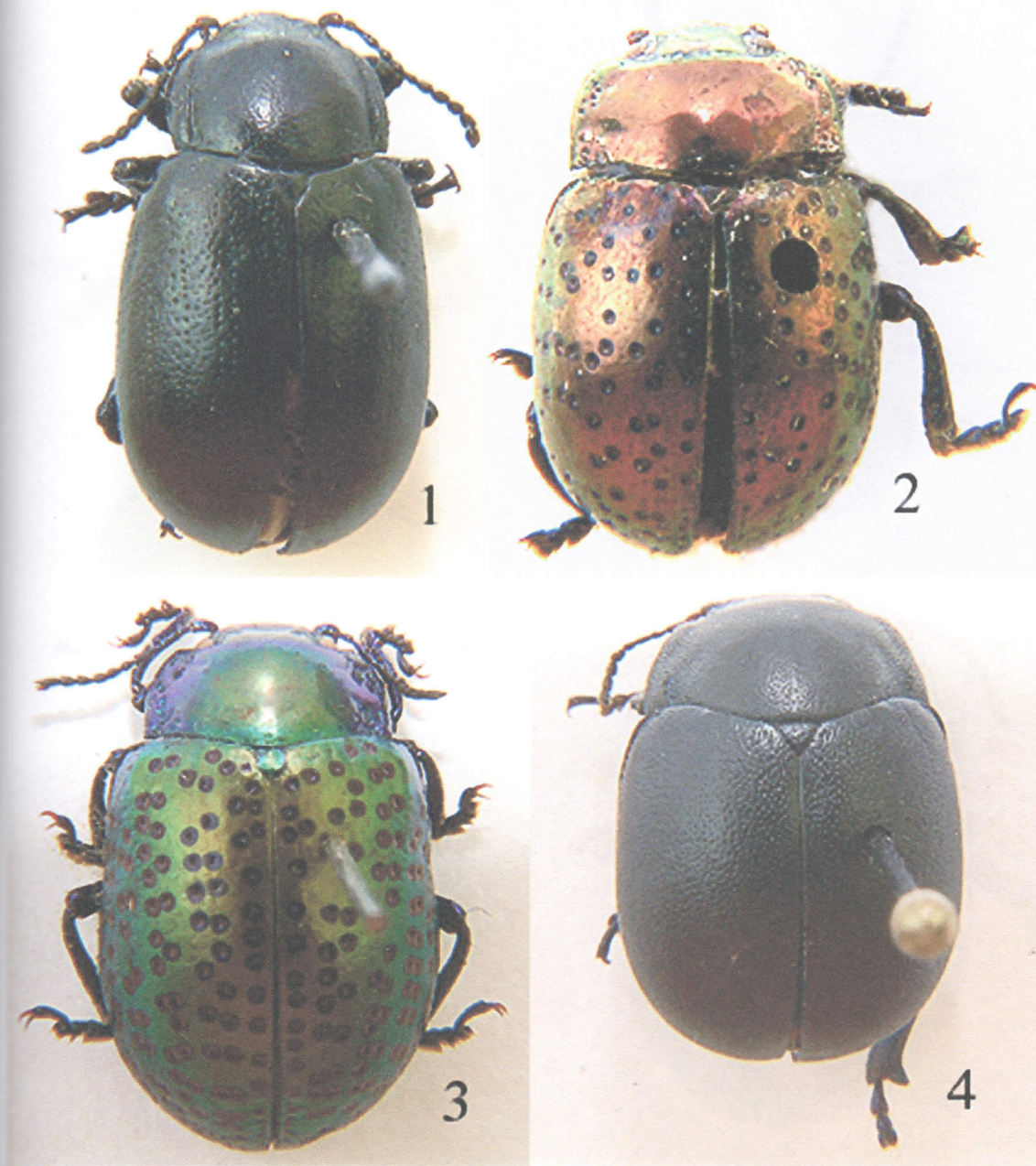


Plate 17: 1 — *Chrysolina turanica*, male, 9.2mm (W Turkmenistan: Nebit-Dag); 2 — *Ch. metallica*, male, 8.4mm (patria incognita); 3 — *Ch. bicolor*, female, 10.6mm (Algeria: Boughzoul); 4 — *Ch. platyscelidina*, female, 8.2mm (Ukraine: Crimea: Simferopol).

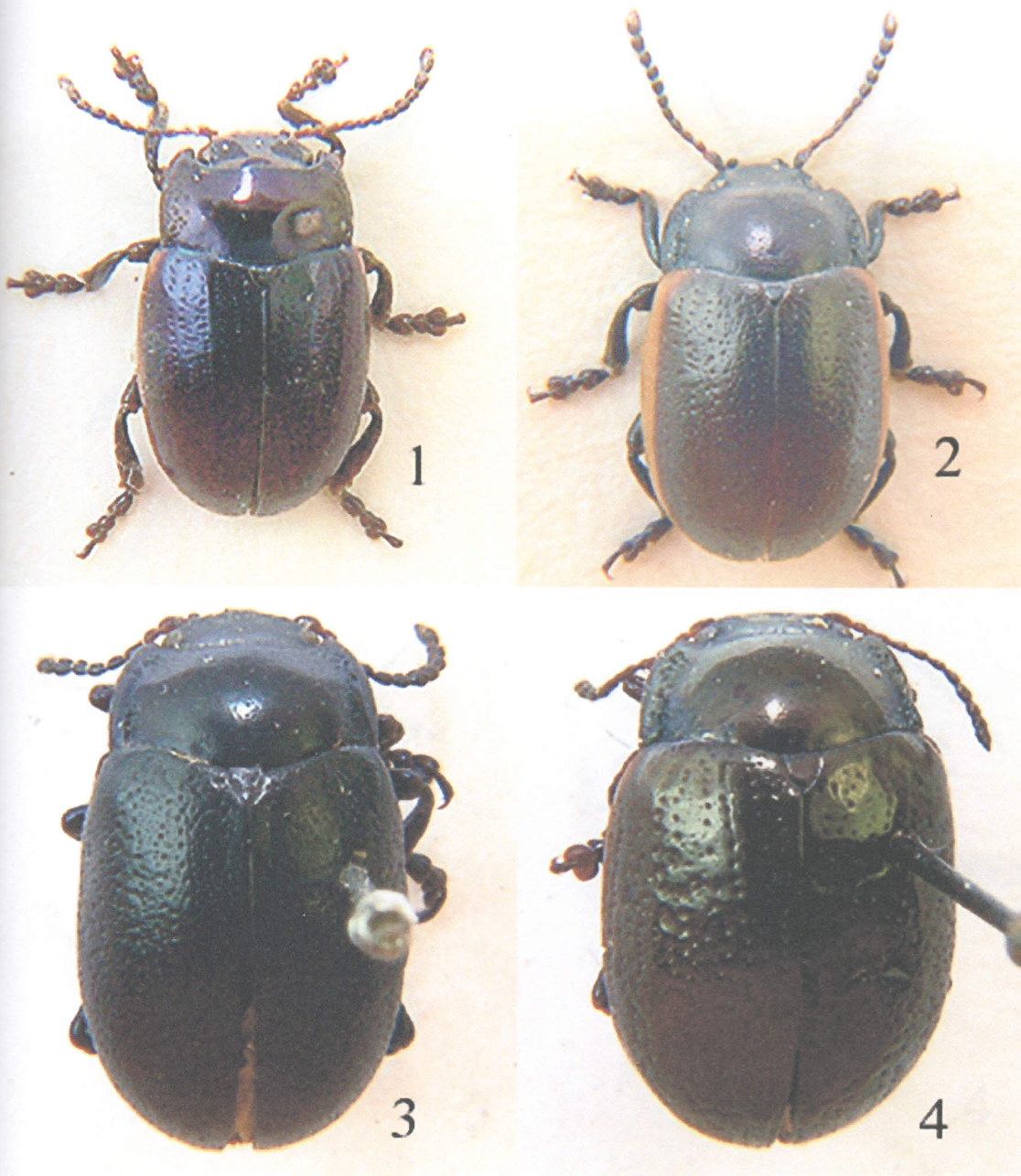


Plate 18: 1 — *Chrysolina analis*, male, 4.7mm (Russia: St.-Petersburg); 2 — *Ch. carnifex carnifex*, male, 6.7mm (Russia: Orenburg reg.: Orsk); 3 — *Ch. carnifex melanaria*, male, 7.4mm (France: Nice); 4 — *Ch. carnifex cruentata*, male, 7.3mm (Spain: Sierra Segura: Molinico).



1



2



3



4

Plate 19: 1 — *Chrysolina carnifex* aff. *fossulata*, male, 9.0mm (N Algeria: Setif, 1100m); 2 — *Ch. besseri*, female, 5.9mm (Ukraine: Kherson reg.: Rybalche Vill.); 3 — *Ch. janbechynei*, male, 6.3mm (C Spain: Aranjuez); 4 — *Ch. flavomarginata*, male, 5.8mm (USA: S Colorado).



1



2



3



4

Plate 20: 1 — *Chrysolina hudsonica*, male, 5.3mm (Canada: Hudson Bay); 2 — *Ch. circumducta*, female, 8.2mm (Russia: Saratov reg.: Aleksandrov-Gai); 3 — *Ch. interstincta graellsii*, male, 6.2mm (Spain: Escorial); 4 — *Ch. interstincta subseriata*, male, 7.1mm (W France: La Rochelle).

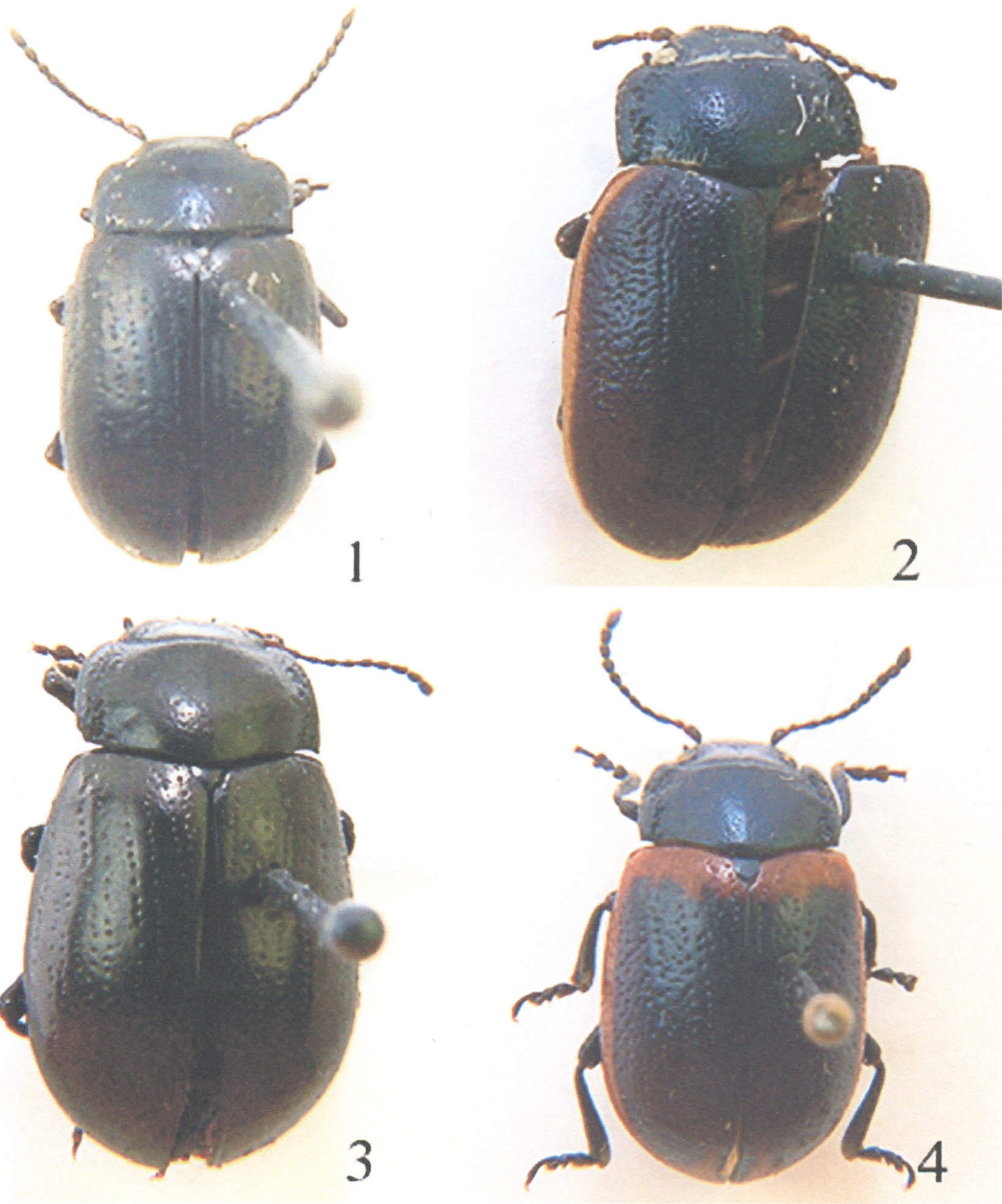


Plate 21: 1 — *Chrysolina instabilis*, male, 4.6mm (Russia: Chukot Penins.: Milkera); 2 — *Ch. lehri*, male, 6.6mm (SE Kazakhstan: Ak-Kungoi Mts.: Narynkol); 3 — *Ch. lia*, male, 8.4mm (Kyrghyzstan: Alai ridge: Taldyk pass); 4 — *Ch. sellata*, female, 8.1mm (Turkey: Ulukischla).

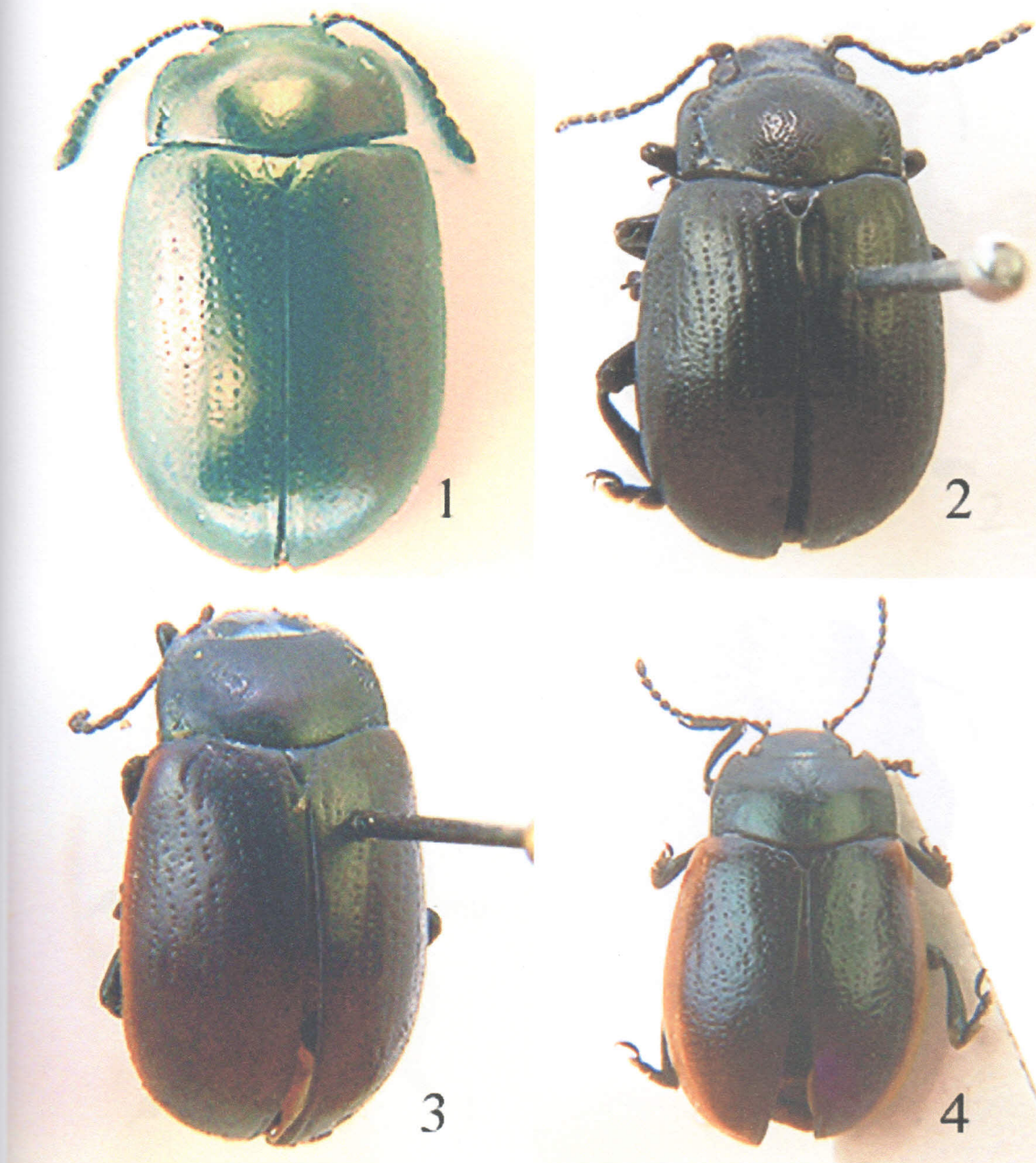


Plate 22: 1 — *Chrysolina superstes superstes*, male, 7.6mm (Morocco: Alto Atlas: Marrakech — Ouarzazate, 2100m); 2 — *Ch. immarginata*, male, 6.7mm (E Kyrghyzstan: Koilyuu river gorge, Molo Mt., 3300m); 3 — *Ch. tesari elbursica*, male, 7.8mm (W Turkmenistan); 4 — *Ch. tesari tesari*, female, 6.4mm (Russia: Karachayevo-Cherkess Autonom. Reg.: Chachet-Chat ridge, 1500–2000m).



Plate 23: 1 — *Chrysolina vagecincta vagecincta*, male, 6.7mm (Tunisia: Gafsa); 2 — *Ch. vishnu*, male, 8.4mm (Nepal: Num, 1600–2000m); 3 — *Ch. zamotajlovi*, male, paratype, 6.1mm (Russia: Krasnodar Krai: Lagonaki Plateau: Abadzesh Mt., 2300m); 4 — *Ch. marginata borealis*, male, 5.2mm (Russia: S Taimyr Penins.: Khatanga).



Plate 24: 1 — *Chrysolina marginata bodemeyeri*, female, 8.0mm (Iran: Teheran); 2 — *Ch. marginata marginata*, male, 6.1mm (Russia: Saratov reg.: Aleksandrov-Gai); 3 — *Ch. marginata songarica*, female, 6.7mm (Kyrgyzstan: Susamy, Karakol river valley); 4 — *Ch. marginata glacialis*, male, 5.6mm (Switzerland: E Engadin: Pontresina).



Plate 25: 1 — *Chrysolina lopatini*, male, 5.3mm (Russia: Baikal lake, Ugun-
goi Isl.); 2 — *Ch. rufilabris*, male, 5.2mm (Russia: Transbaikalia); 3 — *Ch.*
pusa, male, 5.3mm (Mongolia: Tereldsh); 4 — *Ch. brunnicornis bermani*, male,
5.2mm (Russia: N Chita reg.: Stanovoe Plateau: Kodarskiy ridge, 50km NW
Chara Vill., 2500m).

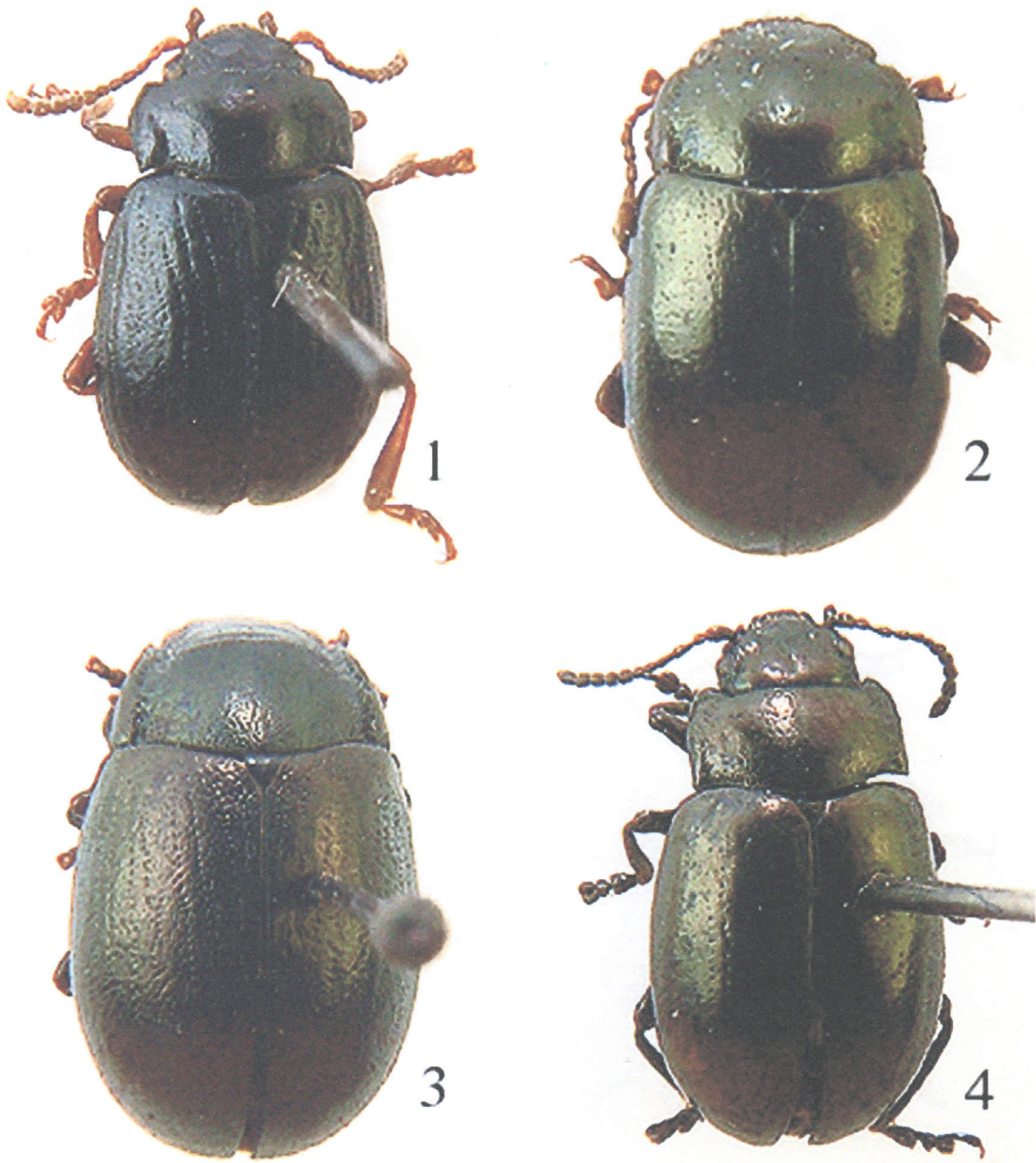


Plate 26: 1 — *Chrysolina brunnicornis wrangeliani*, male, 5.3mm (Russia: Wrangel Isl.); 2 — *Ch. brunnicornis brunnicornis*, male, 4.7mm (Russia: Tuva: Mugur-Aksy); 3 — *Ch. sajanica*, female, syntype, 6.3mm (Russia: Tuva: Iki-Ottuk); 4 — *Ch. lucti*, male, 6.0mm (China: Tibet: 44km SW Tingri, La-Lung La, 5150m).

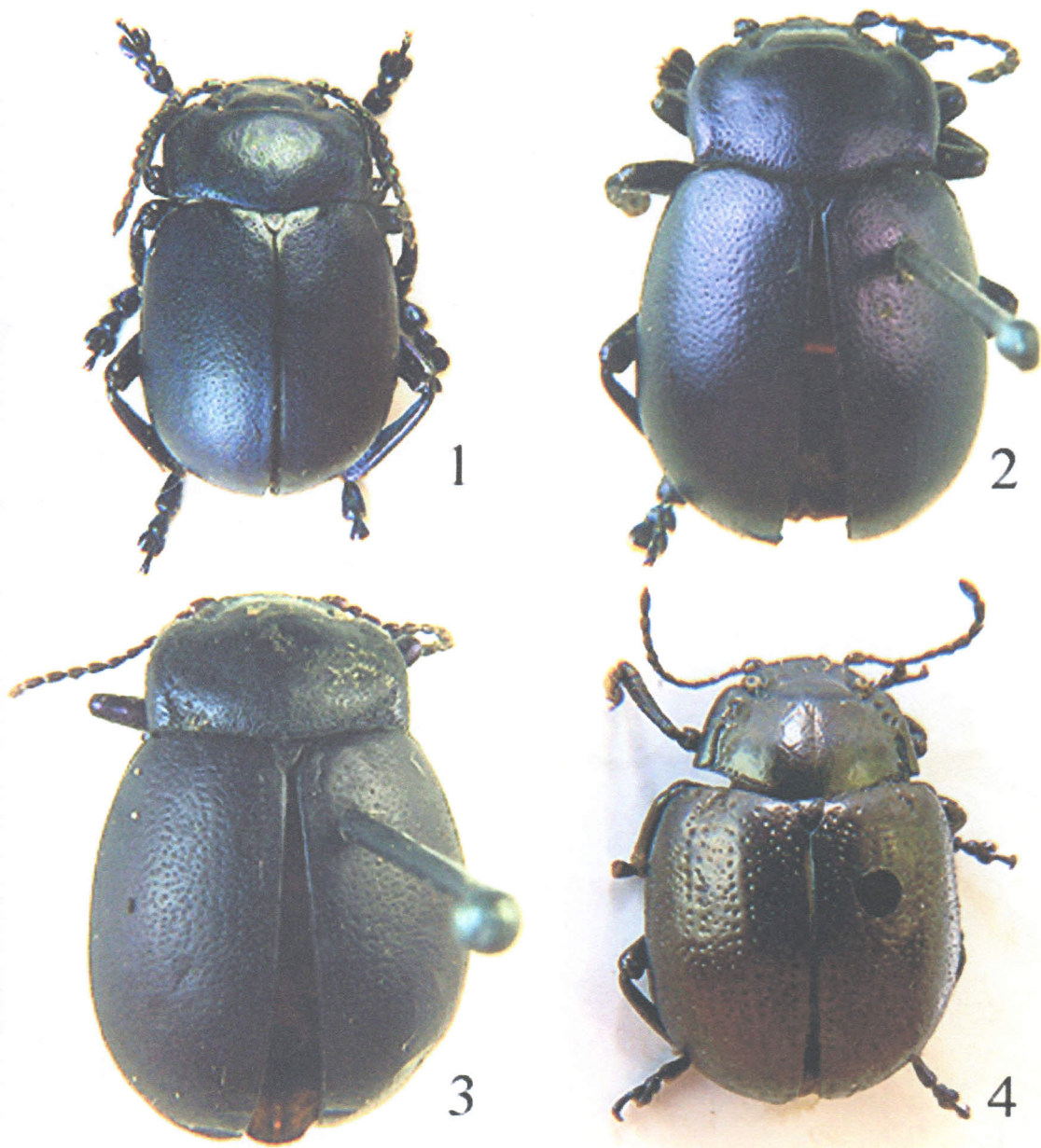


Plate 27: 1 — *Chrysolina nikolskyi sutschanica*, male, 8.3mm (Russia: Primorski Krai: S Sikhote Alin: Oblachnaya Mt., 1700m); 2 — *Ch. nikolskyi nikolskyi*, male, 7.8mm (Russia: S Sakhalin Isl.); 3 — *Ch. nikolskyi adzhalmica*, female, 8.2mm (Russia: Khabarovsk Krai: Amgun river, Badzhal Vill.); 4 — *Ch. cribraria*, female, 7.8mm (N. America).

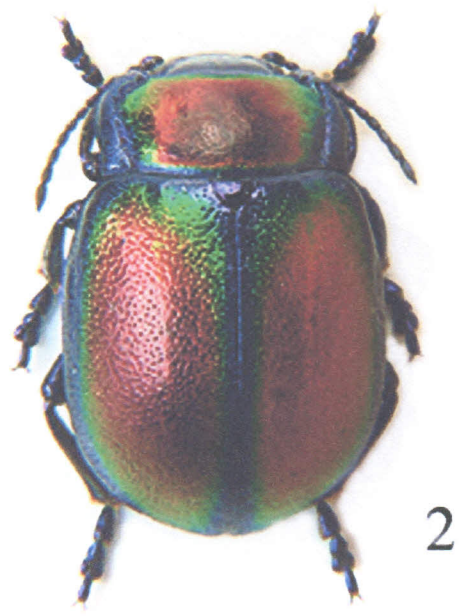


Plate 28: 1 — *Chrysolina brahma*, male, paratype, 7.4mm (India: Bashahr State: Chini); 2 — *Ch. jakowlewi*, female, 8.4mm (Russia: Khakass Autonom. Reg.: Shira lake); 3 — *Ch. sulcicollis solida*, male, 8.3mm (N Korea: Machon-riong); 4 — *Ch. sulcicollis sulcicollis*, female, 8.4mm (China: Khingán).

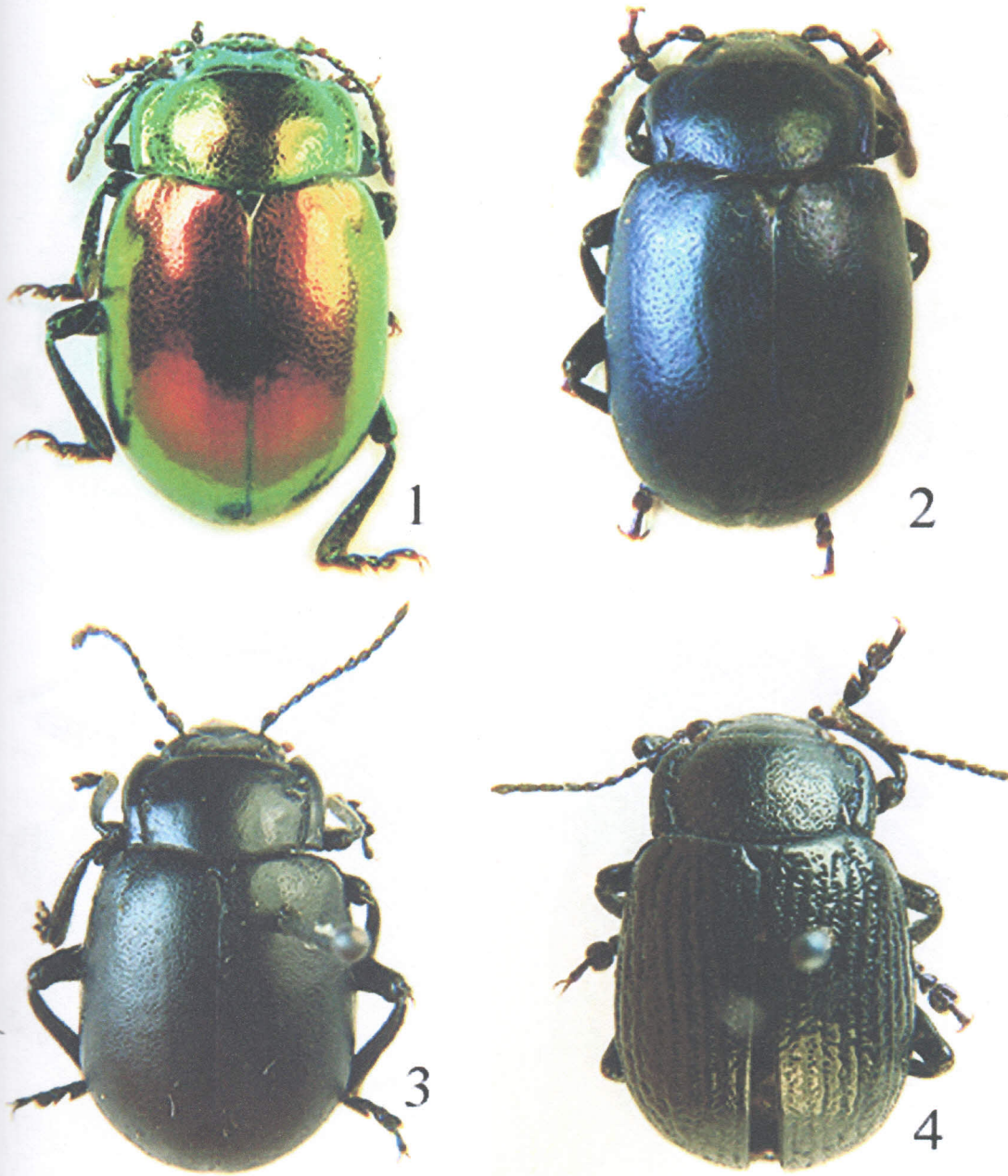


Plate 29: 1-2 — *Chrysolina sogdiorum*: 1 — female, 8.2mm (Kyrgyzstan: Chandalashsky ridge), 2 — female, 7.7mm (Kyrgyzstan: Suusamyr Too ridge, 3200–3500m); 3 — *Ch. rugulosa*, female, 10.4mm (Mongolia: Ubsu Nur Aimak: Ureg Nur lake, N shore, 1700–1900m); 4 — *Ch. alaschanica*, male, 8.8mm (China: Alashan ridge).

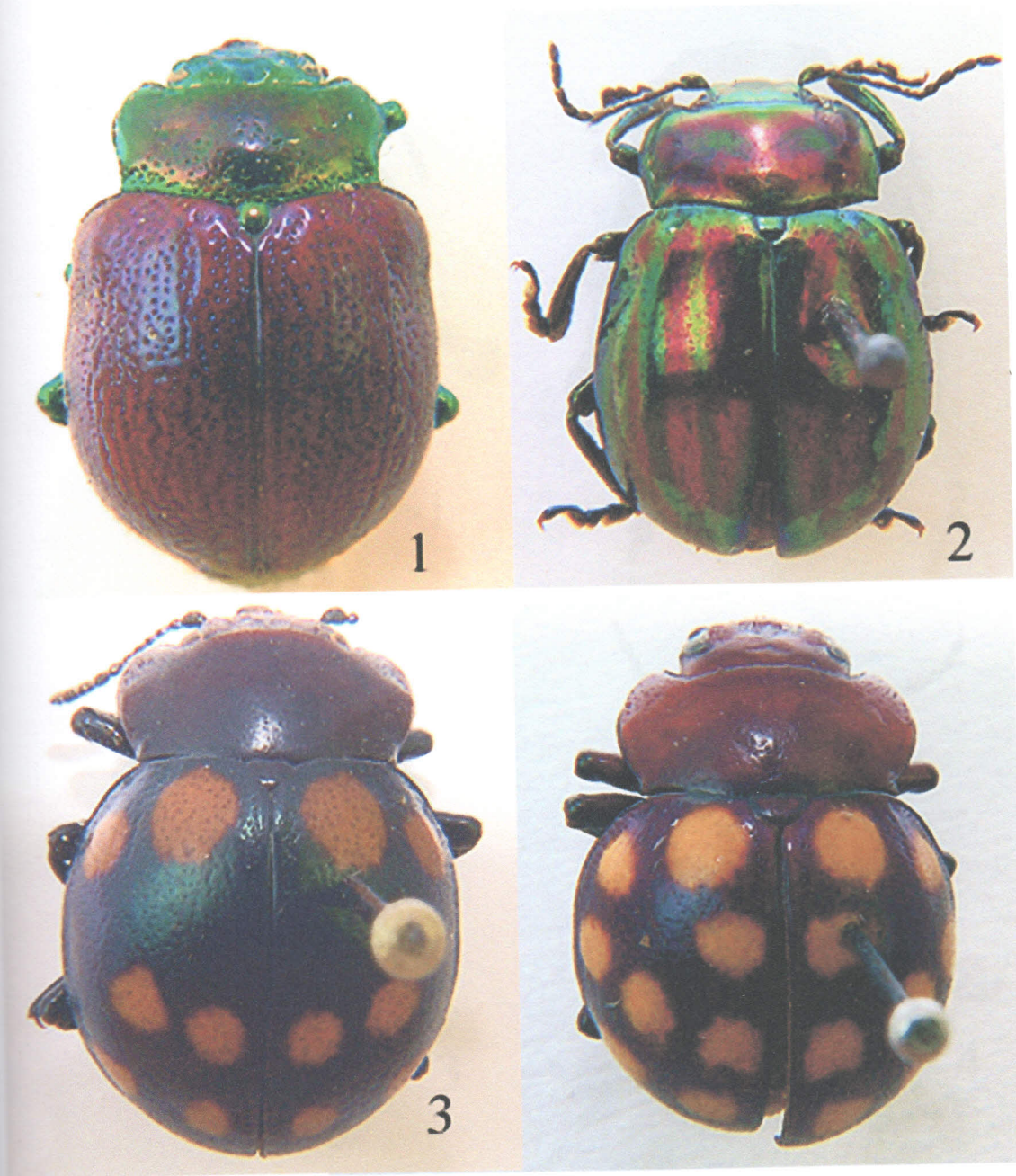


Plate 30: 1 — *Sphaerolina balyi*, 10.7mm (S India: Madurai); 2 — *Chrysolina ambigua*, female, 8.2mm (Nepal: Mechi Prov.: Ilam Distr.: Rakse Vill., 1700–2600m); 3–4 — *Camerounia ornata*: 3 — male, 8.9mm (Cameroon: Musake-Huette), 4 — male, 8.1mm (Cameroon: Soppo).

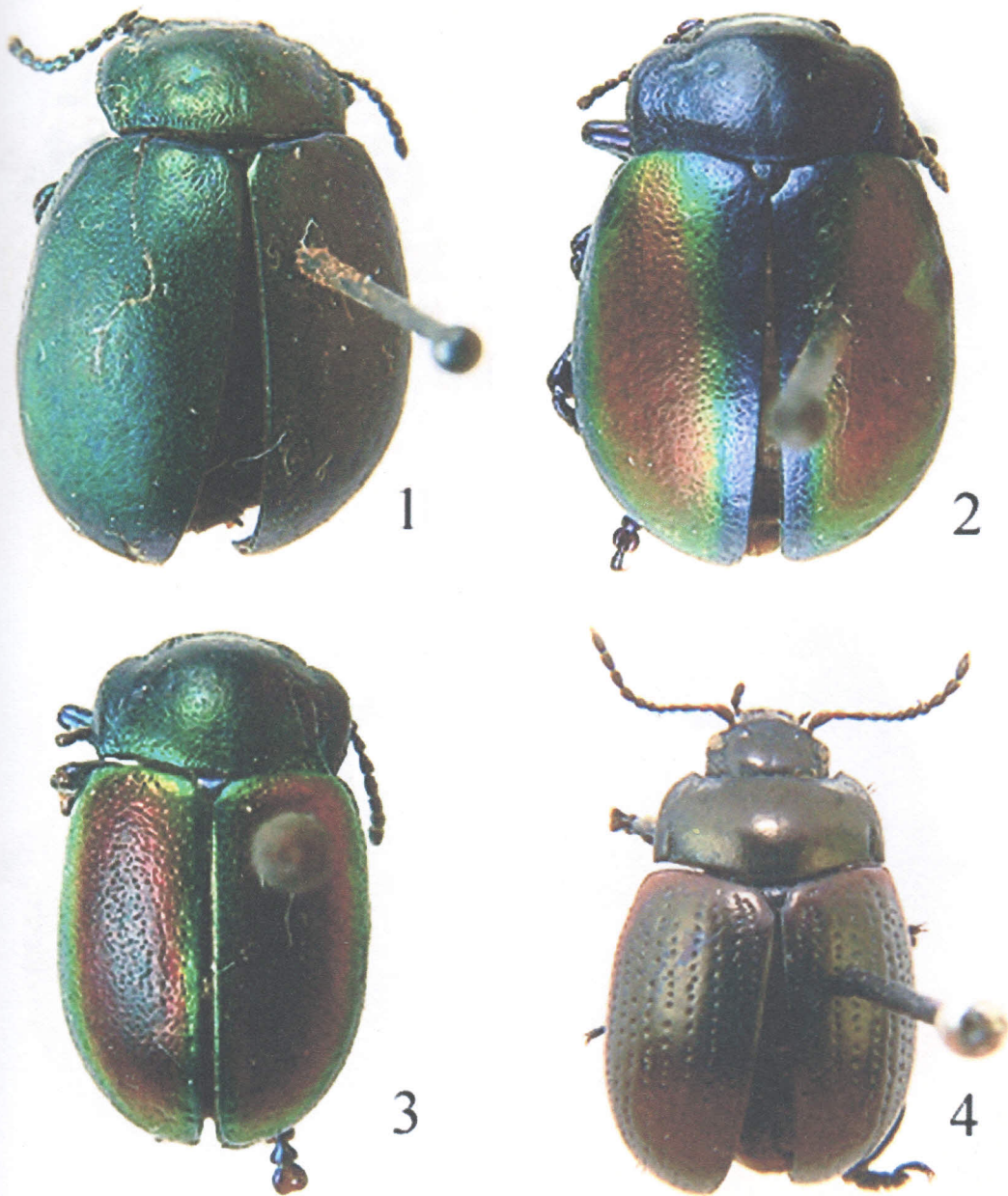


Plate 31: 1 — *Chrysolina nikolskyi nikolskyi*, female (*Ch. kabakovi*, holotype), 9.2mm (Russia: Kunashiri Isl.); 2 — *Ch. spectabilis*, female (*Ch. spectabilis polychroma*, paratype), (Russia: Buryat: Mondy); 3 — *Ch. spectabilis*, male (*Ch. spectabilis viridipurpurea*, holotype), (Russia: Tuva: Obrucheva ridge); 4 — *Ch. taygetana*, male, 7.0mm (Greece: Peloponnesus Penins.: Tayget Mts., 2100m).

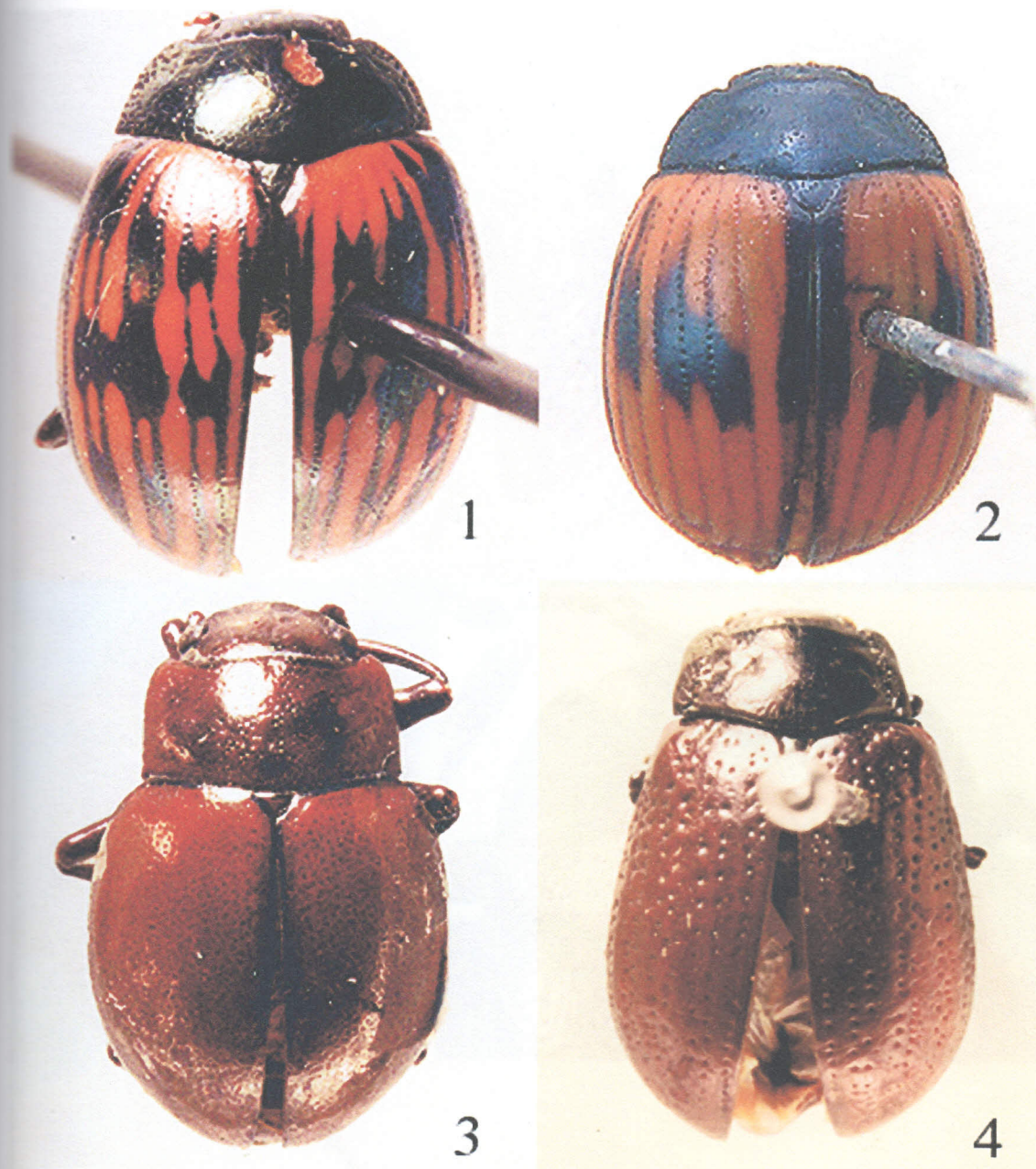


Plate 32: 1 — *Chrysolina striata*, female (*Ch. lineolata*, holotype), (S Africa: Cape Prov.); 2 — *Ch. striata* (var. B sensu Vogel), female, 6.3mm (S Africa: Cape Prov.); 3 — *Timarchomima longicornis*, male, holotype, 7.0mm (India: Pondichery); 4 — *Ch. manipurensis*, female, 9.3mm (India: Assam: Mishmi Hills, Delai Valley, Cha Che). 1, 3, 4 published with the permission of BMNH, London.



Plate 33: *Chrysolina koreana*, male, holotype (Korea: Kogendo, Kongo-Zan Mt., Konro-Ho), published with the permission of TARI, Taiwan.



Plate 34: *Chrysolina koreana*, female, paratype (Korea: Kogendo, Kongo-Zan Mt., Konro-Ho), published with the permission of TARI, Taiwan.



1



2

1960.VII.12
采集者 王书永

新疆：富蕴
1200公尺
中国科学院

Chrysolina
fuyunica
Cken

3



4

Plate 35: 1, 3 — *Chrysolina fuyunica fuyunica*, male, syntype, 8.0mm (China: Xinjiang), published with the permission of BMNH, London; 2 — *Ch. quadrangulata*, male, 7.3mm (Russia: Far East: Magadan reg.); 4 — *Ch. eurina*, male, 5.3mm (Russia: Moscow reg.: Likhovitsy Distr.: Chiornaja Vill.).