

A new species of *Nabis* from Madeira (Heteroptera: Nabidae)

I.M. Kerzhner

Kerzhner, I.M. 2006. A new species of *Nabis* from Madeira (Heteroptera: Nabidae). *Zoosystematica Rossica*, **15**(1): 81-82.

Nabis (Dolichonabis) valentinae sp. n. is described from Madeira. This species is closely related to *N. (D.) capverdicus* Rem. (Cape Verde Islands).

I.M. Kerzhner, Zoological Institute, Russian Academy of Sciences, Universitetskaya nab. 1, St.Petersburg 199034, Russia. E-mail: kim@ik3599.spb.edu

***Nabis (Dolichonabis) valentinae* sp. n.**

Holotype. ♀, **Madeira**, Ribeira Frio, wet shady river valley, 5.III.2005, V.G. Kuznetsova; Zoological Institute, St.Petersburg.

Paratypes. 2 ♀ (one of them with most of abdomen missing, only its apex with genitalia preserved), collected and deposited with the holotype.

Description. Female, forma brachyptera. Body dull, except as stated otherwise. Head, thorax, hemelytra with very short, abdomen with somewhat longer adpressed silvery hairs. Antennae (only segments 1 and 2 preserved) with sparse, short, recumbent pale hairs.

Head dirty yellow, dorsally with dark pattern typical of *Nabis*; wide median stripe on ventral side not touching eyes, antennal tubercles and postocular areas dark fuscous to black. Sides of postocular areas slightly diverging caudad. Ocelli small. Antennal segments 1 and 2 (3 and 4 missing) yellow, segment 2 brownish at apex. Rostrum reaching middle coxae, yellow, base of segment 1 and segments 3 and 4 brownish.

Pronotum subtrapezoidal, relatively flat, pale fuscous, with percurrent median black stripe, which is wider on fore lobe and narrowed to hind margin; fore lobe with black pattern typical of *Nabis*; hind lobe yellowish, with pale fuscous stripe on each side from median stripe. Fore margin of pronotum straight, hind margin slightly concave. Scutellum black, basally with a semi-circular shining area on each side, in apical half with yellow oblique spot on each side. Ventral side of thorax fuscous with yellow areas around insertions of coxae.

Hemelytra dirty yellow, slightly infuscate in inner half, strongly shortened, with corium and clavus fused, venation distinct and common suture slightly shorter than scutellum; hind margin of corium obliquely cut; wing membrane vestigial, as a very narrow strip.

Coxae black; trochanters yellow with central brown spot. Femora brownish yellow dorsally, yellow ventrally, with numerous dark spots and stripes, in apical part with two more or less distinct yellow rings on dorsal side. Fore femur widest near base; hind femur slightly swollen apically. Tibiae yellow with brown bases and apices. Tarsi yellow; segment 1 and apex of segment 3 brown. Claws brown.

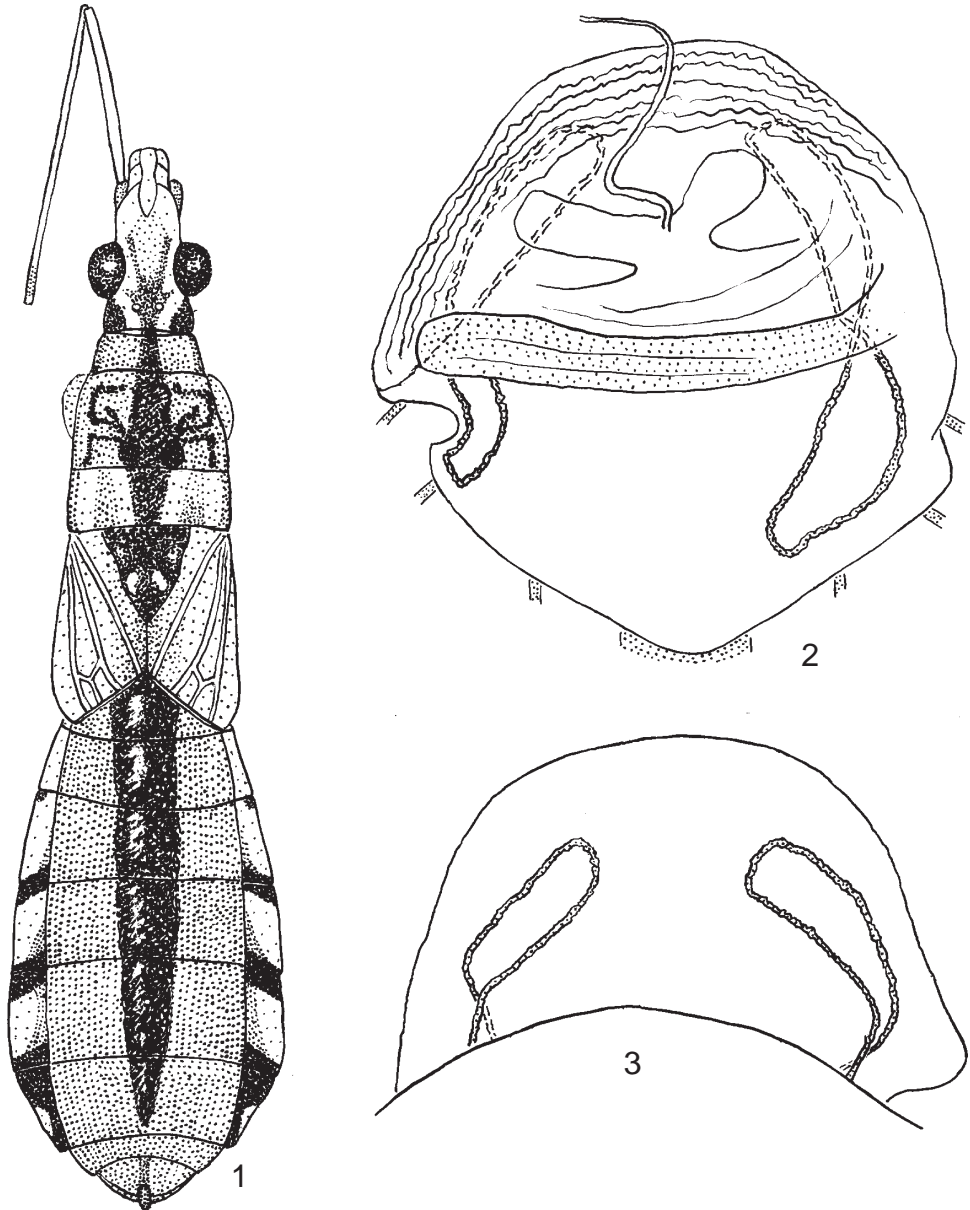
Abdomen (except connexivum) ventrally almost black, dorsally greyish fuscous with shining median brownish black stripe from abdominal base to apex of segment VII. Connexivum dorsally and ventrally yellow, anterolateral corner of segment III with blackish dot, borders of segments III-VII each with oblique black band, segment VII black with yellow triangular spot beyond middle.

Vagina (Figs 2, 3) thin-walled, slightly asymmetrical, produced caudad; parietal glands elongate, asymmetrical.

Measurements (mm). Length: body 8.8, head 1.4 (preocular part 0.7, eye 0.45, postocular part 0.25), pronotum 1.4 (collar 0.2, fore lobe 0.75, hind lobe 0.45), scutellum 0.7, hemelytron 1.6, 1st antennal segment 1.3, 2nd segment 2.45, fore femur 3.0, fore tibia 2.5, hind femur 4.0, hind tibia 4.7. Width: body 2.2, head before eyes 0.5, across eyes 1.0, vertex 0.35, postocular part 0.7, pronotum on anterior margin 0.7, on its posterior margin 1.25, scutellum 0.6, fore femur (maximum) 0.5, hind femur (maximum) 0.4.

Etymology. The species is named after its collector, Valentina G. Kuznetsova.

Comparison. The new species is closely related to *N. capverdicus* Remane, 1957 (Cape Verde Islands). With some doubt, I place both in the subgenus *Dolichonabis* Reuter because of similarity in appearance and the female genitalia to other species of this subgenus (see discussion



Figs 1-3. *Nabis valentinae* sp. n. 1, body; 2, vagina, dorsal; 3, vagina, ventral.

about the position of *N. capverdicus* in Remane, 1957, 1964). Both species differ from other representatives of the subgenus *Dolichonabis* in the bicolourous connexivum and obliquely cut corium. *N. valentinae* differs from *N. capverdicus* in the darker coloration, oblique dark bands on connexivum crossing the borders of segments (situated on fore margins of segments in *N. capverdicus*), shorter hemelytra, much smaller rudiment of the wing membrane, and asymmetrical vagina and parietal glands.

References

- Remane, R. 1957. *Nabis* (s.str.) *capverdicus* nov. spec., eine neue *Nabis*-Art von den Kapverden (Hemipt. Het. Nabidae). *Comment. biol.*, **16**(14): 1-6.
 Remane, R. 1964. Weitere Beiträge zur Kenntnis der Gattung *Nabis* Latr. (Hemiptera Heteroptera, Nabidae). *Zool. Beitr. (N.F.)*, **10**(2): 253-314.

Received 7 July 2006