

A new species of *Itopectis* Förster from Mexico (Hymenoptera: Ichneumonidae)

D.R. Kasparyan & S. Niño

Kasparyan, D.R. & Niño, S. 2004. A new species of *Itopectis* Förster from Mexico (Hymenoptera: Ichneumonidae). *Zoosystematica Rossica*, **13**(1): 49-51.

A new species of ichneumon-fly, *Itopectis mexicanus* sp. n. of the tribe Pimplini, is described from Mexico, Tamaulipas. The new species is reared from a pupa of *Coptocyclus texana* (Schaeffer) (Chrysomelidae: Cassinae) on *Ehretia anacia* (Teran & Berl.) (Boraginaceae).

D.R. Kasparyan, Zoological Institute, Russian Academy of Sciences, Universitetskaya nab. 1, St. Petersburg 199034, Russia & División de Estudios de Postgrado e Investigación, UAM Agronomía y Ciencias, Universidad Autónoma de Tamaulipas (UAT), Cd.Victoria, Tam. 87149, Mexico.

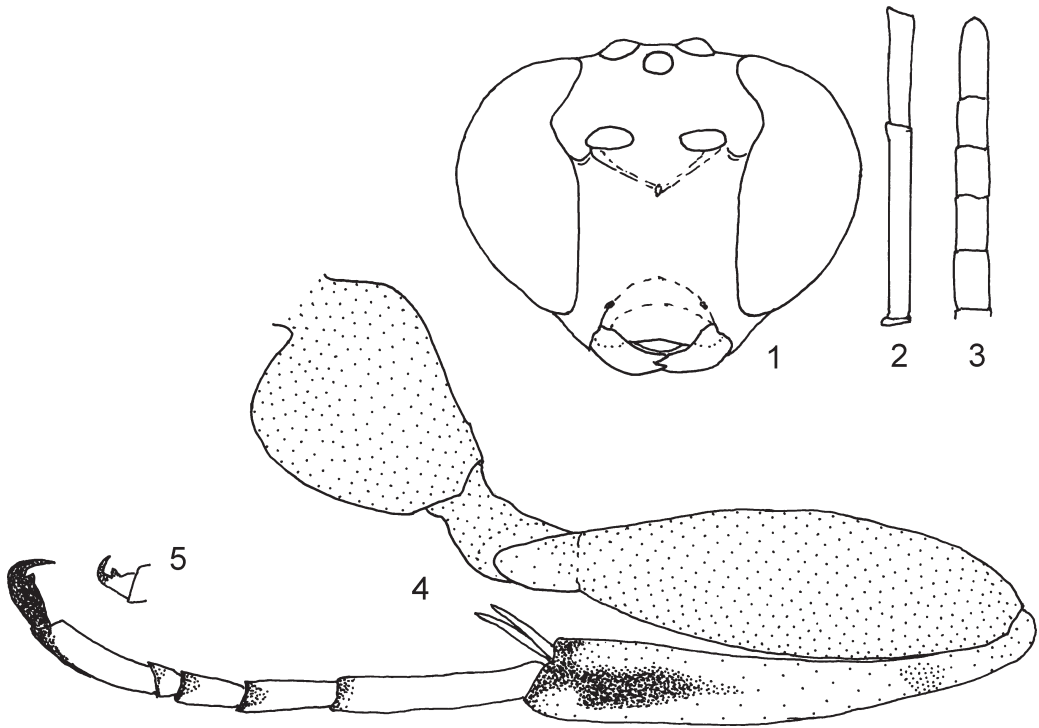
S. Niño, División de Estudios de Postgrado e Investigación, UAM Agronomía y Ciencias, Universidad Autónoma de Tamaulipas, Cd.Victoria, Tam. 87149, Mexico.

The genus *Itopectis* belongs to the tribe Pimplini (Pimplinae). All members of the tribe are idiobiont endoparasitoids. Their usual hosts are pupae of different Lepidoptera, but species of *Itopectis* are known also as parasites in cocoons of Hymenoptera (Tenthredinoidea and Ichneumonoidea), very rarely in puparia of Diptera, and here is firstly recorded parasitism in pupae of Coleoptera. The genus *Itopectis* is known from most parts of the world (except Australia). It includes about 30 species in the world fauna with most of them in the Holarctic Region (Yu & Horstmann, 1997). The Nearctic species have been studied by Townes & Townes (1960); five South American species were reviewed by Porter (1970); two species from Costa Rica were described by Gauld (1991); a review of Palaearctic species was given by Kasparyan (1973, 1981). For Mexico, only one species has been recorded, *I. conquisitor* Say (Morley, 1914; Townes & Townes, 1966; Ruiz et al., 2002); a new species of *Itopectis* from Mexico is described here.

***Itopectis mexicanus* sp. n.**
(Figs 1-5)

Holotype. ♀, Mexico, Tamaulipas, municip. Hidalgo, El Chorrillo, 13.X.1996, ex pupa of *Coptocyclus texana* (Schaeffer) (Chrysomelidae, Cassidinae) living on *Ehretia anacia* (Teran & Berland) (Boraginaceae) (leg. T. Ormelas, S. Niño). The holotype is deposited at the Museum of Insects of UAT (Universidad Autónoma de Tamaulipas), Cd.Victoria, Tam. 87149, Mexico.

Description. Female (holotype). Fore wing 7.0 mm long. Antenna with 27 flagellar segments; first and second segments combined about 1.2 times as long as maximum diameter of eye (Figs 1, 2); flagellum apically weakly incrassate, subapical segments about 1.4-1.5 times as long as wide and 1.6 times as wide as width of first segment centrally (Figs 2, 3). Temples almost flat, strongly narrowed behind eyes, about 0.6 times as long as eye. Posterior ocellus separated from eye by 0.66 of its own diameter. Frons concave, polished, without punctures. Face convex, with moderately coarse and moderately dense setiferous punctures. Clypeus in profile with upper half slightly convex, lower part slightly concave; its apical margin sharp and truncate (Fig. 1). Mandible short, strongly narrowed apically, with upper tooth distinctly longer than lower one. Mesoscutum smooth, with moderately fine setiferous punctures, which are separated by about 1.2-2 their diameters; punctures on scutellum finer and sparser. Notauli almost absent. Upper ends of prepectal carina lying on the level of lower 0.4 of hind margin of pronotum. Mesopleurum highly polished; its anterior 0.6 with moderately fine setiferous punctures (sparser than in mesoscutum), posterior 0.4 without punctures. Metapleurum polished, with fine superficial setiferous punctures (except for lower 0.25); hairs rather long, silver; submetapleural carina strong and complete. Propodeum rather long; its median dorsal carina absent (only their front ends are discernible as a pair of small anterior tubercles



Figs 1-5. *Itopectis mexicanus* sp. n. 1, head anteriorly; 2, two basal segments of flagellum; 3, apical segments of flagellum; 4, hind leg; 5, fore tarsal claw.

on front border of propodeum above basal propodeal groove). All tarsal claws with distinct basal tooth (Figs 4, 5). First tergite very weakly convex; at basal half, laterally and at posterior margin polished, without punctures; its dorsomedian carinae absent, dorsolateral wide carinae distinct only at base and at apical 0.3. Third tergite 0.62 times as long as wide; tergites 2 to 7 with moderately strong elevations and depressions. Ovipositor sheath about 1.1 times as long as first tergite and 0.67 times as long as hind tibia.

Black. Scape in apical half ventrally, pedicel and flagellar segments 1-3 ventrally yellowish; flagellum brownish red, paler ventrally, dark at apex. Mandibles blackish, with dorsobasal blackish brown spot. Palpi, hind corners of pronotum, tegulae (except for brownish hind edge), plates at base of fore wing, all white. Apex of mesepimeron reddish brown. Fore legs with coxa and trochanters white, tibia and tarsi very pale (whitish). Middle legs with coxa, trochanters and femora pale reddish (trochanters and femur in apical 0.3 white anteriorly); tibia and tarsus whitish, tarsal segments 1-3 blackish dorsally at extreme apex. Hind coxa, trochanters and femur pale reddish, trochanters partly yellowish at apex and

posteroventrally; hind tibia and tarsus whitish with red brownish patterns as in Fig. 4 (hind tibia not darkened at base!); posterior surface of hind tibia darkened only at extreme apex. Pterostigma pale brownish, darker on margins. Posterior margins of tergites 1-7 with very narrow dorsal white band and on tergites (3)4-6 with small sublateral brownish spot.

Comparison. *Itopectis mexicanus* may easily be distinguished from all congeners by the coloration of hind legs (Fig. 4) and by rather short ovipositor, which is about as long as first tergite (or 0.67 times as long as hind tibia). A similar short ovipositor is also characteristic of *I. curticauda* Kriechb. (Holarctic) and in two closely related species, *I. clavicornis* Thoms. (Palearctic) and *I. fustiger* Townes (Nearctic). *I. mexicanus* differs from the first (in addition to the coloration of hind tibia) in the presence of a distinct postmedian tooth on fore tarsal claws (Fig. 5); from two other species it differs in the weakly incrassate antenna (in *I. clavicornis* and *I. fustiger*, subapical segments short, subquadrate) and longer cheeks (malar space of *I. fustiger* 0.12 times as long as basal width of mandible).

References

- Gauld, I.D.** 1991. The Ichneumonidae of Costa Rica, 1. *Mem. Amer. entomol. Inst.*, **47**: 589 p.
- Kasparyan, D.R.** 1973. Review of the Palearctic species of the tribe Pimplini (Hymenoptera, Ichneumonidae). Genera *Itoplectis* Först., *Apechtis* Först. *Entomol. Obozr.*, **52**(3): 665-681. (In Russian).
- Kasparyan, D.R.** 1981. Hymenoptera, Ichneumonidae. Introduction. Key to subfamilies. Subfamily Pimplinae. In: Medvedev, G.S. *Opredelitel' nasekomykh evropeyskoy chasti SSSR* [Keys to the insects of European part of the USSR], **3**(4): 1-97. (In Russian).
- Morley, Cl.** 1914. *A revision of the Ichneumonidae, based on the collection in the British Museum. With descriptions of new genera and species. 3, Tribes Pimplides and Bassides.* London, Brit. Mus. ix & 140 p.
- Porter, C.C.** 1970. A revision of the South American species of *Itoplectis* (Hymenoptera: Ichneumonidae). *Acta zool. Lilloana*, **26**: 63-104.
- Ruiz-Cancino, E., Kasparyan, D.R. & Coronado-Blanco, J.M.** 2002. Ichneumonidae (Hymenoptera), p. 631-646. In: J.J. Morrone et al. (Eds.), *Biodiversidad, taxonomía y biogeografía de artrópodos de México: Hacia una síntesis de su conocimiento.* CONABIO-UNAM-Bayer de México. Mexico. 690 p.
- Townes, H.K. & Townes, M.** 1960. Ichneumon-flies of America north of Mexico: 2. Subfamilies Ephialtinae, Xoridinae, Acaenitinae. *Bull. U.S. nat. Mus.*, **216**(2). 676 p.
- Townes, H.K. & Townes, M.** 1966. A catalog and reclassification of the Neotropical Ichneumonidae. *Mem. Amer. entomol. Inst.*, **8**: 366 p.
- Yu, D.S. & Horstmann, K.** 1997. A catalogue of world Ichneumonidae (Hymenoptera). *Mem. Amer. entomol. Inst.*, **58**. 1558 p. (pt 1: 1-763; pt 2: 764-1558).

Received 25 May 2004