

New data on Landrevinae from Cambodia (Orthoptera: Gryllidae)

A.V. Gorochov

Gorochov, A.V. 2004. New data on Landrevinae from Cambodia (Orthoptera: Gryllidae). *Zoosystematica Rossica*, **13**(1): 7-8.

Repapa? *proxima* sp. n. and the hitherto unknown females of *Duolandrevus rarus* Gor. and *Ectodrelanva paramarginalis* Gor. are described. These species are recorded from Elefan Mts.

A.V. Gorochov, Zoological Institute, Russian Academy of Sciences, Universitetskaya nab. 1, St.Petersburg 199034, Russia.

Repapa? *proxima* sp. n.

Holotype. ♂, **Cambodia**, northern part of Elefan Mts, Kiri-Rom National Park (150 km NNE of Sihanoukville), 600-800 m, forest, on bark of living tree, at night, 7-10.X.2003 (collected as larva, imago in July 2004), A. Gorochov & M. Berezin (Zoological Institute, St.Petersburg).

Paratypes. **Cambodia**: 1 ♂, same data as in holotype; 1 ♂, 1 ♀, southern part of Elefan Mts, Phnom-Bokor Mt, Bokor National Park, 700-1000 m, forest, under bark of dry trees, at night, 18-22.IX.2003, A. Gorochov & M. Berezin. All in Zoological Institute, St.Petersburg.

Description. Male (holotype). Coloration and structure of body parts as in *R.?* *paradoxa* Gor. (Gorochov, 2001), but tegmina with 4 long oblique veins, strongly curved chords, and additional crossvein connecting mirror with chords near diagonal vein, metanotal gland as in Fig. 5, hind lateral epiphallic processes of genitalia slightly wider, with shorter and more curved apical hook and distinctly narrower upper lobe situated near base of this hook (for comparison, see Figs 1-4 and 7-10).

Variation. Tegmina sometimes with 3 long oblique veins and/or slightly smaller mirror.

Female. Similar to male, but structure of tegmina as in Fig. 6; tegmina brown with slightly darker lateral part and almost light brown medial half of dorsal part.

Length (mm). Body: ♂ 18-24, ♀ 19; pronotum: ♂ 3-3.3, ♀ 3.2; tegmina: ♂ 8-8.5, ♀ 3.3; hind femora: ♂ 13-14, ♀ 13.8; ovipositor 13.5.

Comparison. The new species, as well as *R.?* *paradoxa*, clearly differs from all other congeners or representatives of nearest genera in the characteristic shape of hind epiphallic processes.

Duolandrevus rarus Gorochov, 1996

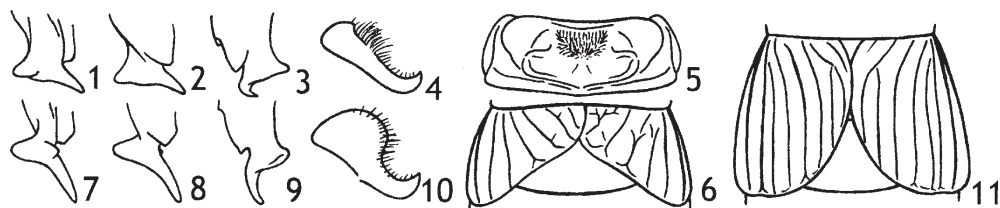
New material. **Cambodia**: 3 ♂, 1 ♀, southern part of Elefan Mts, Phnom-Bokor Mt, Bokor National Park, 700-1000 m, forest, on and under bark of dry trees, at night, 18-22.IX.2003, A. Gorochov & M. Berezin.

Description of female (nov.). Similar to male (Gorochov, 1996), but tegmina slightly smaller and with almost parallel longitudinal veins only: 5-6 in dorsal part and 7-8 in lateral one (Fig. 11).

Length (mm). Body: ♂ 19-21, ♀ 19; pronotum: ♂ 2.7-3.1, ♀ 3.3; tegmina: ♂ 5.2-6.2, ♀ 4.5; hind femora: ♂ 10.8-12, ♀ 11.8; ovipositor 13.7.

Ectodrelanva paramarginalis Gorochov, 2000

New material. **Cambodia**: 1 ♂, central part of Elefan Mts, vill. Styeng-Chkhral (100 km NE of Sihanoukville), 300-500 m, forest, on bark of living tree, at night, 27.VIII-6.IX.2003, A. Gorochov & L. Anisytukin; 1 ♂, 10-15 km NEE of Sihanoukville, env. of waterfall, 200 m, forest,



Figs 1-11. 1-6, *Repapa?* *proxima* sp. n.; 7-10, *R.?* *paradoxa* Gor.; 11, *Duolandrevus rarus* Gor. Apex of left hind lateral process of epiphallus from above (1, 7), from below (2, 8), from side (3, 9), and from behind (4, 10); metanotal gland (5) and female pterothorax (6, 11) from above.

under bark of dry tree, at night, 11-12.IX.2003, A. Gorochov; 2 ♂, 2 ♀, northern part of Elefan Mts, Kiri-Rom National Park (130 km NNE of Sihanoukville), 300-500 m, forest, on and under bark of trees, at night, 27.IX-1.X.2003, A. Gorochov & M. Berezin.

Description of female (nov.). Almost identical to that of *E. marginalis* Gor. (Gorochov, 2000), but slightly smaller and almost without light stripe along lateral edge of dorsal part.

Length (mm). Body: ♂ 16.5-20, ♀ 17-18; pronotum: ♂ 2.7-3.6, ♀ 3.3-3.5; tegmina: ♂ 6-7.5, ♀ 2.7-3; hind femora: ♂ 10-14.5, ♀ 12.2-13.3; ovipositor 9-9.2.

Reference

- Gorochov, A.V.** 1996. New and little known crickets from the collection of the Humboldt University and some other collections (Orthoptera: Grylloidea). Part 2. *Zoosyst. Ross.*, **5**(1): 29-90.
- Gorochov, A.V.** 2000. New and little known Landrevinae (Orthoptera: Gryllidae). *Zoosyst. Ross.*, **8**(2), 1999: 267-280.
- Gorochov, A.V.** 2001. A new species of Landrevinae from Thailand (Orthoptera: Gryllidae). *Zoosyst. Ross.*, **10**(1): 36.

Received 5 August 2004