

## Two new species of *Rhaphidophora* from Southern Japan (Orthoptera: Rhaphidophoridae: Rhaphidophorinae)

A.V. Gorochov

Gorochov, A.V. 2002. Two new species of *Rhaphidophora* from Southern Japan (Orthoptera: Rhaphidophoridae: Rhaphidophorinae). *Zoosystematica Rossica*, 11(1): 104.

Two new species of the genus *Rhaphidophora* from the Southern Ryukyus are described.

A.V. Gorochov, Zoological Institute, Russian Academy of Sciences, Universitetskaya nab. 1, St.Petersburg 199034, Russia.

### *Rhaphidophora recta* sp. n. (Figs 1-5)

*Holotype*. ♂, **Japan, Ryukyus, Yaeyama, Iriomote I.**, night forest, VII.2001, N. Orlov (Zoological Institute, St.Petersburg).

*Paratype*. ♀, same data as for holotype.

*Description*. Male (holotype): coloration yellowish brown with almost dark brown head rostrum and tergites, greyish area under antennae and eyes, very light palpi, scape parts, coxae, sternites of thorax, and proximal abdominal segments; lateral ocelli rather narrow (only slightly wider than in Fig. 1); femora with normal apical spines and without denticles; fore tibiae with 2 outer, 1 inner and 2 apical lower spines only; middle tibiae with 2 outer and 0-1 inner lower spines, 2 outer and 2 inner upper spines, and 4 apical spines; hind tibiae with 20-22 inner and 19-20 outer upper denticles and normal apical spines; hind metatarsus with 3-4 small upper and 1 large apical denticles (apex of latter denticle extending to apex of longest tibial spine); abdominal tergites simple; anal plate as in Figs 2, 3; genitalia almost as in *Rh. mariae* Gor. and most related species. Female similar to male, but area under antennae and eyes dark grey, lateral ocelli narrow (Fig. 1), and apex of apical denticle of hind meta-

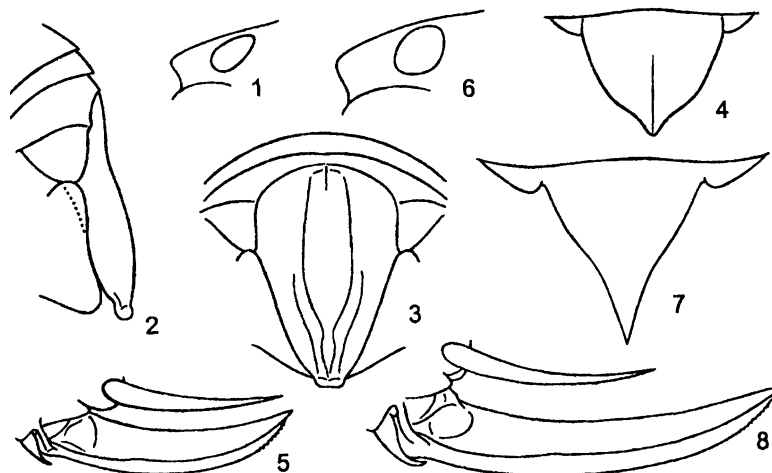
tarsus slightly not extending to apex of longest tibial spine; genital plate, ovipositor, and cerci as in Figs 4, 5; distal half of upper edge of ovipositor with very small denticles. Length (mm): body: ♂ 21, ♀ 19; pronotum: ♂ 7.8, ♀ 8; fore femora: ♂ 8.5, ♀ 8.7; hind femora: ♂ 20, ♀ 22; hind tibiae: ♂ 18, ♀ 20; ovipositor 12.5.

### *Rhaphidophora rasilis* sp. n. (Figs 6-8)

*Holotype*. ♀, **Japan, Ryukyus, Yaeyama, Iriomote I.**, night forest, VII.2001, N. Orlov (Zoological Institute, St.Petersburg).

*Description*. Female (holotype) similar to that of *Ph. recta*, but distinctly larger, head lighter (yellowish with brownish rostrum only), lateral ocelli almost round (Fig. 6), middle tibiae with a pair of upper spines, hind tibiae with 19-21 inner and 18 outer upper denticles, hind metatarsus with 4-5 small upper denticles, genital plate with longer and more acute distal part (Fig. 7), ovipositor distinctly longer (Fig. 8) and with smooth upper edge. Male unknown. Length (mm), ♀: body 27, pronotum 10, fore femora 11, hind femora 27, hind tibiae 24, ovipositor 18.

Received 29 March 2002



**Figs 1-8.** *Rhaphidophora*, ♀ (1, 4-8) and ♂ (2, 3): 1-5, *Rh. recta* sp. n.; 6-8, *Rh. rasilis* sp. n. Head rostrum from side (1, 6); epiproct from side (2) and from behind (3); genital plate from below (4, 7); abdominal apex from side (5, 8).