

Two new species of *Paradiestrammena* from Southern Japan (Orthoptera: Rhaphidophoridae: Aemodogryllinae)

A.V. Gorochov

Gorochov, A.V. 2002. Two new species of *Paradiestrammena* from Southern Japan (Orthoptera: Rhaphidophoridae: Aemodogryllinae). *Zoosystematica Rossica*, 11(1): 74.

Two new species of the genus *Paradiestrammena* from the Southern Ryukyus are described.

A.V. Gorochov, Zoological Institute, Russian Academy of Sciences, Universitetskaya nab. 1, St.Petersburg 199034, Russia.

Paradiestrammena mira sp. n. (Figs 1-4)

Holotype. ♂, **Japan**, *Ryukyus*, Yaeyama, Iriomote I., night forest, VII.2001, N. Orlov (Zoological Institute, St.Petersburg).

Paratypes. 6 ♀, same data as for holotype.

Description. Male (holotype): coloration light brown with very light palpi and bases of cerci, brown antennal flagellum and spots on scape, and dark brown rostrum, 2 pairs of vertical stripes under eyes and antennae, 2 pairs of longitudinal stripes (narrow medial and wide lateral) on vertex and rather numerous very distinct spots on tergites and legs; rostral tubercles acute, medium-sized (space between rostral apex and lateral ocellus almost 1.5 times as long as this ocellus); legs with femoral apical spines typical of this genus, rather numerous lower inner denticles on hind femora, 2 lower outer and 4 apical spines on fore tibiae, 1 lower inner and 4 apical spines on middle tibiae, 2 lower rows of 25-30 denticles and 6 apical spines on hind tibiae, and hind metatarsus slightly shorter than longest tibial apical spine and with apical denticle; genitalia (Figs 1, 2) similar to those of *P. apicalis* (Br.-W.) and *P. kotljarovskiyi* Gor., but characterized by rounded epiphallallic plate and distinctly bifurcated upper median membranous lobe. Female: general appearance as in male, but rostrum slightly longer and tergites usu-

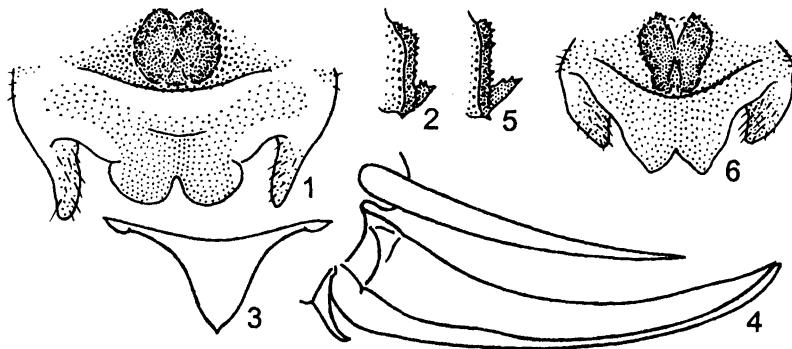
ally somewhat darker; genital plate, ovipositor, and cerci as in Figs 3, 4. Length (mm): body: ♂ 10.5, ♀ 10-14; pronotum: ♂ 5.2, ♀ 5.5-6; fore femora: ♂ 7, ♀ 7-8; hind femora: ♂ 14.5, ♀ 14.5-16.5; hind tibiae: ♂ 15, ♀ 15-17; ovipositor 7.5-8.

Paradiestrammena propinqua sp. n. (Figs 5, 6)

Holotype. ♂, **Japan**, *Ryukyus*, Yaeyama, Iriomote I., night forest, VII.2001, N. Orlov (Zoological Institute, St.Petersburg).

Description. Male (holotype) similar to that of *P. mira*, but tergites and legs almost uniformly light brown (tergites somewhat darker; legs with indistinct spots on tibiae and hind femora only), rostral tubercles slightly longer (space between rostral apex and lateral ocellus almost twice the diameter of lateral ocellus, as in female of *P. mira*), hind femora with 1 lower inner denticle, and genitalia with narrower epiphallallic plate, longer hook of this plate, and with angular apical projections of upper median membranous lobe (in *P. mira*, these projections rounded) (for comparison see Figs 1, 2, 5, 6). Female unknown. Length (mm), ♂: body 11.5, pronotum 5.3, fore femora 7.5, hind femora 15, hind tibiae 15.5.

Received 29 March 2002



Figs 1-6. *Paradiestrammena*, ♂ (1, 2, 5, 6) and ♀ (3, 4). 1-4, *P. mira* sp. n.; 5, 6, *P. propinqua* sp. n. Genitalia from above (1, 6); epiphallallic plate from side (2, 5); genital plate from below (3); ovipositor and cercus from side (4).