

A new species of the genus *Kuwayamaea* (Orthoptera: Tettigoniidae: Phaneropterinae)

A.V. Gorochov

Gorochov, A.V. 2001. A new species of the genus *Kuwayamaea* (Orthoptera: Tettigoniidae: Phaneropterinae). *Zoosystematica Rossica*, 9(1), 2000: 194.

The third Asian species of *Kuwayamaea* Mats. & Shir. from China is described. It differs from all known congeners in the size, structure of wings, length of legs, and shape of the male genital plate.

A.V. Gorochov, Zoological Institute, Russian Academy of Sciences, Universitetskaya nab. 1, St.Petersburg 199034, Russia.

Kuwayamaea sergeji sp.n.

Holotype. ♂, China, Zhejiang Prov., Linan County, West Tianmu Mt., 16-17.IX.2000, Sergej Belokobylskij.

Paratypes. 2 ♂, 1 ♀, same data as in holotype.

Holotype and paratypes in Zoological Institute, St.Petersburg.

Description. Male (holotype) similar to males of *K. sapporensis* Mats. & Shir. and *K. chinensis* (Br.-W.), with all characteristics of this distinct genus: mirror of male lower tegmen separated from sclerotized basal part by membranous area (Fig. 1), male cerci with simple conical apical part (Fig. 3), male genital plate not very long, slightly curved in profile, and without deep median notch in distal part (Figs 3, 4). It is distinguished from them by the smaller size, shortened wings (tegmina and hind wings almost equal, extending to base of distal third of hind femora, but apex of hind wings hardly exposed) with venation of tegminal lateral part as in Fig. 2, longer legs (hind femora almost 6.3 times as long as pronotum), medium width of almost membra-

nous triangular median part of genital plate (Fig. 4), and characteristic shape of apex of this plate (Figs 3, 5). Green, with brownish antennal flagellum, greyish spots on upper part of head behind eyes and on stridulatory apparatus of upper tegmen, several small blackish spots on tegminal lateral part, and numerous dark dots on pronotum and legs.

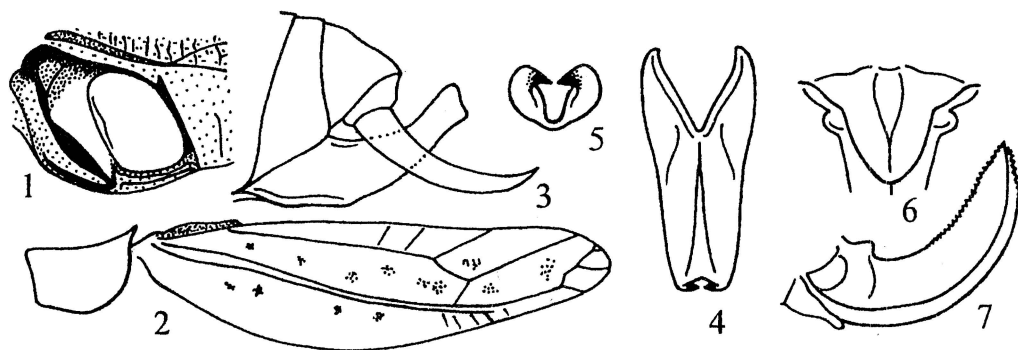
Variation. Sometimes coloration brownish yellow (not green) or almost without dark dots.

Female similar to holotype, but its hind wings not exposed (somewhat not reaching tegminal apex); genital plate and ovipositor as in Figs 6, 7.

Length (mm). Body: ♂ 17-20, ♀ 19; body with wings: ♂ 21-23, ♀ 24; pronotum: ♂ 3.3-3.7, ♀ 3.9; tegmina: ♂ 15-16, ♀ 18.5; hind femora: ♂ 21-23, ♀ 22.5; ovipositor 6.5.

Etymology. This species is named in honour of the collector.

Received 19 March 2001



Figs 1-7. *Kuwayamaea sergeji* sp. n. 1-5, male (holotype); 6, 7, female. Stridulatory apparatus of lower tegmen (1); pronotum and tegmen from side (2); abdominal apex from side (3); genital plate from below (4, 6) and its apex from behind (5); ovipositor from side (7).