

# Larvae of the European species of *Elymana* DeLong (Homoptera: Cicadellidae)

D.A. Dmitriev

Dmitriev, D.A. 1999. Larvae of the European species of *Elymana* DeLong (Homoptera: Cicadellidae). *Zoosystematica Rossica*, 8(1): 77-78.

The 5th instar larva of *Elymana kozhevnikovi* Zachv. is described. A key to larvae of two European species of *Elymana* DeL. is proposed.

D.A. Dmitriev, Zoological Institute, Russian Academy of Sciences, Universitetskaya nab. 1, St.Petersburg 199034, Russia.

## Introduction

Two species of the genus *Elymana* DeLong are known from Europe: *E. sulphurella* Zett. and *E. kozhevnikovi* Zachv. The larvae of these species are very similar. Immature stages of *Elymana sulphurella* were described by Walter (1978). Vilbaste in his key for the identification of the nymphs of North European Cicadinea (Vilbaste, 1982) included both species, but he did not differentiate them.

Examination of 5th instar larvae showed that immature *E. sulphurella* and *E. kozhevnikovi* can be distinguished (see the key below).

## Key for determination of *Elymana* larvae (5th instar)

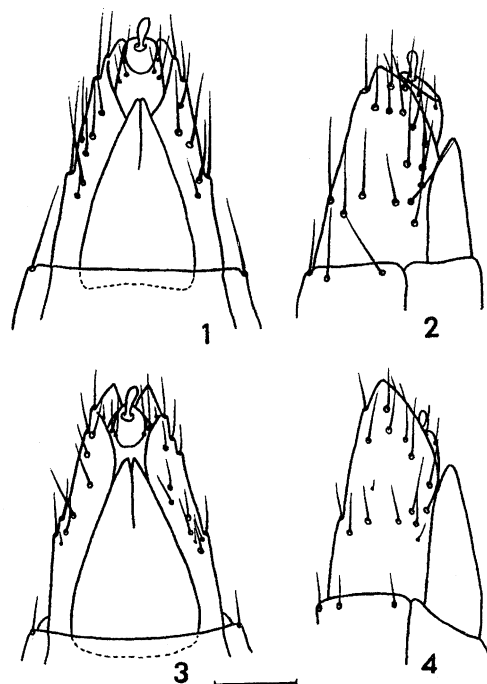
- 1(2). Abdominal setae as long as tergites or only slightly shorter, usually reaching bases of setae of next tergite (Figs 1, 2); body length 3.25-3.5 mm . . . . . *E. sulphurella* Zett.
- 2(1). Abdominal setae half to two-thirds as long as tergites (Figs 3, 4); body length 3.75-4.0 mm . . . . . *E. kozhevnikovi* Zachv.

## Description of the 5th instar larva of *Elymana kozhevnikovi*

**Material.** Larvae collected from Voronezh Prov., Russia.

**Description.** Similar to *E. sulphurella* Zett. Body slender. Vertex slightly longer than pronotum, approximately as long as wide, medially about 1.5 times as long as laterally. Anterior margin of vertex obtuse-angularly rounded; posterior edge straight. Vertex-face

transition rounded. Face distinctly longer than wide. Rostrum with microsetae on sides and with two macrosetae on 2nd segment. Anteclypeus 1.5 times as long as wide, slightly widened to apex. Lorum narrower than anteclypeus. Maxillary plates widened to apex. Postclypeus prominent. Pronotum



Figs 1-4, apex of abdomen. 1-2, *Elymana sulphurella* Zett.: 1, from below; 2, from side; 3-4, *E. kozhevnikovi* Zachv.: 3, from below; 4, from side. Scale: 0.2 mm.

with arched anterior edge and shallowly concave posterior edge; lateral margins without keels. Wing pads 1.5 times as long as meso- and metanotum combined in median part. Abdomen with 4 longitudinal rows of setae; VII and VIII tergites with additional 2 setae on hind angles; IX tergite with numerous setae. Abdominal setae half to two-thirds as long as tergites. Male gonapophyses triangular, with sharp apices, two-thirds as long as IX abdominal segment, somewhat longer than their width near the base.

Coloration straw-yellow. Anterior margin of vertex near ocelli with black points. Rostrum at apex and pretarsi darkened.

Length 3.75-4.0 mm.

#### Acknowledgements

The author is thankful to Prof. A.F. Emeljanov for advice.

#### References

- Vilbaste, J. 1982. Preliminary key for the identification of the nymphs of North European Homoptera Cicadinea. II. Cicadelloidea. *Ann. zool. fenn.*, **19**(1): 1-20.
- Walter, S. 1978. Larvenformen mitteleuropäischer Euscelinen (Homoptera, Auchenorrhyncha). Teil II. *Zool. Jahrb. Abt. Syst. Ökol. Geogr. Tiere*, **105**(1): 102-130.

Received 22 September 1998