

A new species of the genus *Bogasonia* Warén from the Middle Kurile Islands (Mollusca: Opisthobranchia: Diaphanidae)

E.M. Chaban

Chaban, E.M. 1998. A new species of the genus *Bogasonia* Warén from the Middle Kurile Islands (Mollusca: Opisthobranchia: Diaphanidae). *Zoosystematica Rossica*, 7(2): 243-244.

Bogasonia gorjachevi sp. n. is described from Simushir I. This is the first record of the genus from the Pacific.

E.M. Chaban, Zoological Institute, Russian Academy of Sciences, Universitetskaya nab. 1, St.Petersburg 199034, Russia.

The single species of the genus *Bogasonia* Warén, 1989, *B. volutooides* Warén, 1989, was described from northern and northeastern Iceland, from depths of 100-200 m, and only known from this area (Warén, 1989). The new species was collected in course of the R/V "Odyssey" 34th cruise and kindly presented with other material by V. Gorjachev (Moscow), whose name is given to the new species. The type specimens are deposited in the collection of the Zoological Institute, Russian Academy of Sciences, St.Petersburg.

***Bogasonia gorjachevi* sp. n.**
(Figs 1-6, see p. 244)

Holotype. No. 59471, Russia, Middle Kurile Is., Simushir I., Dushnaya Bay, 47° 02' 4" N, 152° 15' 4" E, 150 m, "Odyssey", 34th cruise, st. 29, 14.I.1985, 150 m, coll. D. Alekseev & V. Bisikov.

Paratypes. 2 specimens, No. 59472, as holotype.

Description. Shell small, white, thin; spire well developed; protoconch smooth, not high, of slightly more than one whorl; teleoconch of 3-3.5 whorls, sculptured with distinct growth lines. Periostracum thin, but strong, yellowish, expanded around aperture before margin of shell, forming two narrow keels on each definitive whorl without corresponding elements in shell sculpture. Whorls convex; suture deeply channelled. Aperture wide; outer lip slightly excavated; inner lip forming a thin callus on the parietal wall distinctly reflected in lower part, with wide periostracum on distinct narrow deep umbilicus. Body white; cephalic shield short, wide, without visible tentacular expansions, with

large black eyes. Foot small, oval. Genital opening under posterior margin of cephalic shield; cephalic male copulatory system with narrow silver prostate 1 mm long, without visible penial papilla. Radula formula 1 : 1 : 1; lateral plates narrow, reduced, very close to central tooth; central tooth vault-shaped, with two slightly raised central denticles and two lower lateral cusps. Height of holotype 4.5 mm, diameter 2.7 mm; height of paratypes 5.4 and 4.1 mm, diameter of paratypes 3.1 and 2.4 mm respectively.

Comparison. The new species is similar to *B. volutooides* in having two periostracal keels, but differs from it in the presence of umbilicus, much higher and wider shell (diameter/height ratio is 50% in *B. volutooides*, but 57-60% in the new species), and different rachidian tooth (*B. volutooides* has seven cusps on it: one unpaired, slightly retracted and three partly united lateral cusps on each side; our new species has six cusps).

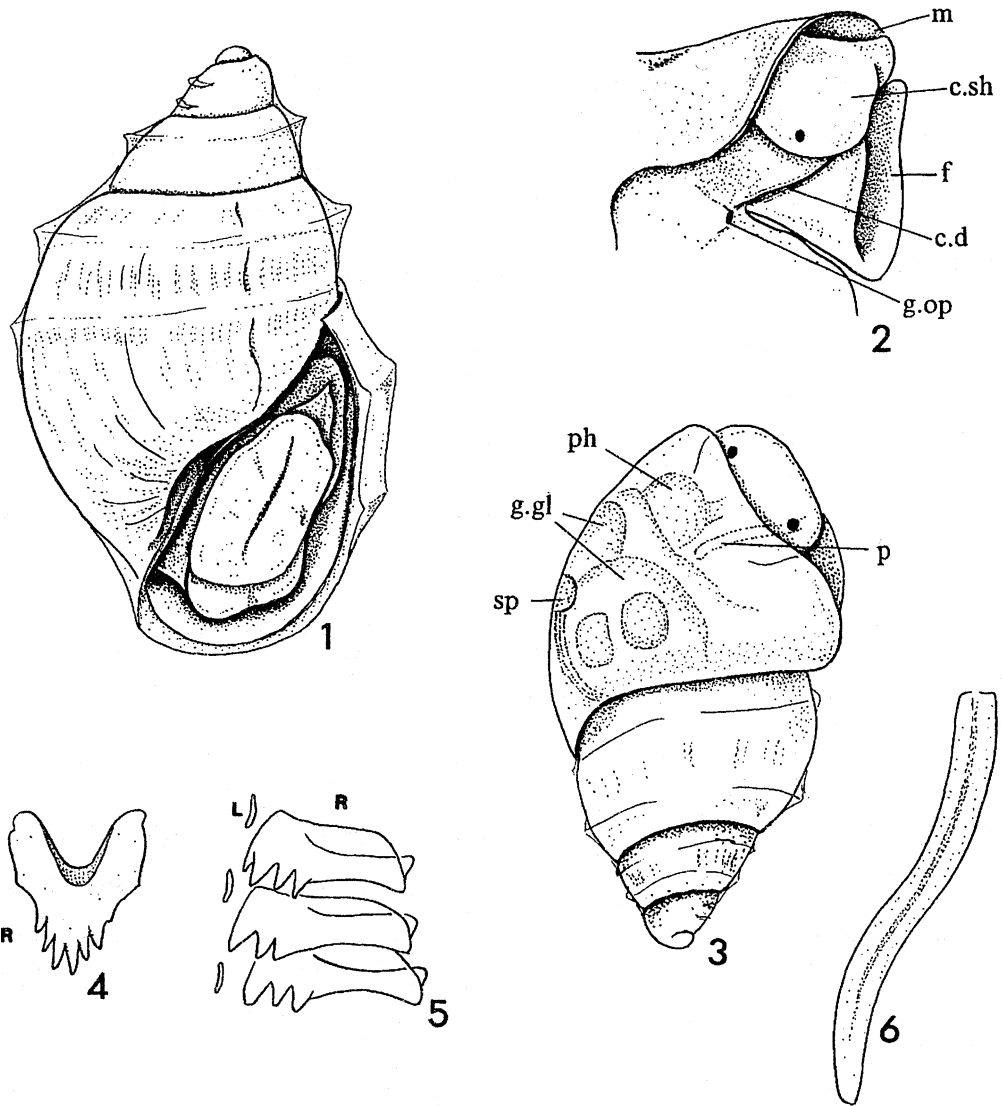
Acknowledgements

The author is thankful to V. Gorjachev (Moscow) for the material of the new species. The work was fulfilled using scientific collections of the Zoological Institute, Russian Academy of Sciences, which obtain financial support from the Science and Technology Ministry of the Russian Federation (Reg. No. 98-03-16).

References

Warén, A. 1989. New and little known Mollusca from Iceland. *Sarsia*, 74(1): 2-28.

Received 22 April 1998



Figs 1-6. *Bogasonia gorjachevi* sp. n.: 1, holotype, shell, ventral view; 2-6, paratype: 2, cephalic part of body; 3, dorsal view without body whorl; 4, rachidian (R) teeth, upper view; 5, part of radula, lateral view with lateral (L) and rachidian (R) tooth; 6, male copulatory system. Abbreviations: *c.sh*, cephalic shield; *f*, foot; *m*, margin of mantle; *g.op*, opening of hermaphroditic reproductive system; *c.d*, external ciliated duct; *ph*, pharynx; *g.gl*, suspected albumen and capsule glands of the hermaphroditic reproductive system; *p*, male copulatory system; *sp*, spermatheca.