

Erotylidae from Korea (Insecta, Coleoptera)

Chujo, Michitaka

Chujo, Michio

Lee, Chang Eon

<http://hdl.handle.net/2324/2567>

出版情報 : ESAKIA. 33, pp.99-108, 1993-03-31. 九州大学農学部昆虫学教室
バージョン : published
権利関係 :



Erotylidae from Korea (Insecta, Coleoptera) ^{1), 2)}

Michitaka CHŪJŌ

Hikosan Biological Laboratory, Faculty of Agriculture, Kyushu
University, Hikosan, Japan 824-07

Michio CHŪJŌ

Kamata 1-6-16-505, Ohta-ku, Tokyo, Japan 144

and

Chang Eon LEE

Department of Biology, College of Natural Science, Kyungpook
National University, Taegu, 702-701 Korea

Abstract. The specimens treated here are collected in our collecting trip under the Korea-Japan Co-operative Science Program on "The Evolution and Biogeography of the Insects in the East Asia" in 1991 and 1992. Four new subspecies, *Dacne (Dacne) fungorum nigrocephala*, *Aporotritoma arakii fuscocephala*, *Aporotritoma nigrovariegata intersecta* and *Tetratriplax inornata nigrocephala* will be described from the mainland of Korea, and 8 species are newly recorded from the country.

DACNINI

1. *Microsternus tokioensh* Nakane*

Microsternus tokioetzsisi Nakane, 1961, *Fragm. Col.*, Tokyo, 1: 5 (Japan: Hoshu).

Spec. exam.: 4 exs., Kwangnung, Pochon Gun, Kyonggi Do, Korea, 16-19. vii. 1992, M. T. Chūjō leg.

Gen. distr.: Korea (incl. Chejudo Island) & Japan (Honshu & Kyushu).

2. *Dacne (Dacne) fungorum nigrocephala* subsp. nov.

- 1) Results from the Korea-Japan Co-operative Science Program on "The Evolution and Biogeography of the Insects in the East Asia". No. 16.
- 2) Contribution from the Hikosan Biological Laboratory, Faculty of Agriculture, Kyushu University, Hikosan (Ser. 4, No. 8).

* Asterisk shows the species has hitherto been unrecorded from mainland of Korea.

This new subspecies is closely related with nominate species, but is separated from the latter by the following character: head and thorax black.

Length: 3.2–4.0mm. Width: 1.4–1.8mm.

Holotype: male (preserved in the collection of C. E. Lee, Kyungpook Natio. Univ.), Jeonglyong Chi, Samnae Myeon, Namweon Gun, Jeongra-buk Do, Korea, 28. ix. 1991, M. T. Chŭjŏ leg. Paratypes: male & female, Dooryu Dong, Joochun Myeon, Samchung Gun, Geonsang-nam Do, Korea, 25. ix. 1991, M. T. Chŭjŏ leg. Paratopotype: female, same collecting data as holotype.

3. *Dacne (Dacne) picta* Crotch*

Dacrepicta Crotch, 1873, Ent. Monthl. Mag., 9: 188 (Japan proper).

Spec. exam.: 1 ex., Tam Ri, Whagae Myeon, Cheonla-nam Do, Korea, 17. vii. 1991, M. T. Chŭjŏ leg.; 1 ex., loc. cit., 18. vii. 1991, M. T. Chŭjŏ leg.

Gen. distr.: Korea, E. Siberia & Japan (Hokkaido, Honshu, Niijima Is., Shikoku, Kyushu & Nakanoshima Is.).

4. *Dacne (Dacne) zonaria* Lewis*

Dame *zonaria* Lewis, 1887, Ann. Mag. Nat. Hist., [5], 20(115): 56 (Japan: Hokkaido & Honshu).

Spec. exam.: 1 ex., Dooryu Dong, Joochun Myeon, Samchung Gun, Gyeongsang Nam Do, Korea, 25. ix. 1991, M. T. Chŭjŏ leg.; 17 exs., Kwangnung, Pochon Gun, Kyonggi Do, Korea, 14–19. v. 1992, M. T. Chŭjŏ leg.; 1 ex., Bougmyeong Ri, Chunchon Gun, Kangweon Do, Korea, 21. vii. 1992, M. T. Chŭjŏ leg.

Gen. distr.: Korea & Japan (Hokkaido, Honshu, Shikoku, Kyushu & Tsushima Is.).

5. *Episcapha (Episcapha) flavofasciata flavofasciata* Reitter

Megalodacne flavofasciata Reitter, 1879, Deutsche Ent. Zeitschr., 23: 223 (E, Siberia).

Spec. exam.: 4 exs., Samjeong Ri, Macheong Myeon, Hamyang Gun, Gyeongsang-nam Do, Korea, 29. ix. 1991, M. T. Chŭjŏ leg.; 1 ex., Kwangnung, Pochon Gun, Kyonggi Do, Korea, 14–19. v. 1992, M. T. Chŭjŏ leg.; 15 exs., Bougmyeong Ri, Chunchon Gun, Kangweon Do, Korea, 22–23. v. 1992, M. T. Chŭjŏ leg.; 3 exs., Bougmyeong Ri, Chunchon Gun, Kangweon Do, Korea, 21. vii. 1992, M. T. Chŭjŏ leg.

Gen. distr.: Korea (incl. Chejudo Island), E. Siberia, China & Japan (Hokkaido).

6. *Episcapha (Psiloscapa) morawitzi* (Solsky)

Megalodacne morawitzi Solsky, 1871, Horae Soc. Ent. Rossicae, 8: 266 (E. Siberia).

Spec. exam.: 16 exs., Kwangnung, Pochon Gun, Kyonggi Do, Korea, 1992, M. T. Chŭjŏ leg.; **3 exs.**, loc. cit., 16–19. vii. 1992, M. T. Chŭjŏ leg.

Gen. distr.: Korea (incl. Chejudo Island), N.-E. China, E. Siberia & Japan (Hokkaido, Honshu, Okinoshima Is., Shikoku, Kyushu, Tsushima Is. & Yakushima Is.).

7. *Megalodacne (Megalodacne) bellula* Lewis*

Megalodacne *bellula* Lewis, 1883, Ent. Monthl. Mag., 20: 139 (Japan proper).

Spec. exam.: 75 exs., Kwangnung, Pochon Gun, Kyonggi Do, Korea, 14–19. v. 1992, M. T.

Chûjô leg.; 27 exs., loc. cit., 16-19. vii. 1992, M. T. Chûjô leg.

Gen. distr.: Korea & Japan (Hokkaido, Honshu, Shikoku & Kyushu).

ENCAUSTINI

8. *Aulacochilus (Aulacochilus) luniferus decorates* Reitter

Aulacochilus decoratus Reitter, 1879, Deutsche Ent. Zeitschr., 23: 223 (E. Siberia).

Spec. exam.: 2 exs., Jeonglyeong, Chi, Samnae Myeon, Chenla-buk Do, Korea, 16. vii. 1991, M. T. Chûjô leg.; 1 ex., Dooryu Dong, Joochun Myeon, Samchung Gun, Gyeonsang-nam Do, Korea, 25. ix. 1991, M. T. Chûjô leg.; 8 exs., Naelyong Ri, Samnae Myeon, Bamweon Gun, Jeongra-buk Do, Korea, 26. ix. 1991, M. T. Chûjô leg.; 1 ex., Jeonglyeong Chi, Samnae Myeon, Namweon Gun, Jeongra-buk Do, Korea, 26. ix. 1991, M. T. Chûjô leg.; 7 exs., Kwangnung, Pochon Gun, Kyonggi Do, Korea, 16-19. vii. 1992, M. T. Chûjô leg.; 2 exs., Bougmyong Ri, Chunchon Gun, Kangweon Do, Korea, 21. vii. 1992, M. T. Chûjô leg.; 5 exs., Pupan Myeon, Hongcheong Gun, Kwangweon Do, Korea, 22. vii. 1992, M. T. Chûjô leg.

Gen. distr.: Korea (incl. Chejudo Is.), E. Siberia, China & Japan (Kyushu & Tsushima Is.).

TRIPLACINI

9. *Aporotritoma arakii fuscocephala* subsp. nov.

This new subspecies is separated from the nominate species by the following characters; much larger in general size, haed dark red except for postero-median part, the postero-median part black.

Length: 4.1mm. Width: 1.4mm.

Holotype: male (preserved in the collection of Prof. C. E. Lee, Kyngpook Natio. Univ.), Jeon-lyeon Chi, Samnae Myeon, Chonla-buk Do, Korea, 16. vii. 1991, M. T. Chûjô leg.

Gen. distr.: Korea.

10. *Aporotritoma consobrina* (Lewis)*

Cyrtotriplax consobrina Lewis, 1894, Ent. Monthl. Mag., 11: 78-79 (S. Siberia).

Spec. exam.: 1 ex., Bougmyong Ri, Chunchon Gun, Kangweon Do, Korea, 21. vii. 1992, M. T. Chûjô leg.

Gen. distr.: Korea, S.-E. Siberia, Sachalin & Japan (Hokkaido, Honshu, Shikoku & Kyushu).

11. *Aporotritoma nigrovariegata intersecta* subsp. nov.

This new subspecies is closely related with the nominate subspecies, but is easily distinguished from the latter by the following characters: elytral fascia is widely intersected in middle part, scutellum red only in central part.

Length: 3.8mm. Width: 2.3mm.

Holotype: male (preserved in the collection of Prof. C. E. Lee, Kyungpook Natio. Univ.), Jeonglyeon Chi, Samnae Myeon, Cheonla-buk Do, Korea, 16. vii. 1991, M. T. Chûjô leg.

Gen. distr.: Korea.

12. *Triplax devia* Lewis*

Triplax devia Lewis, 1887, Arm. Mag. Nat. Hist., [5], 20: (55) & 69 (Japan: Honshu & Kyushu).

Spec. exam.: 2 exs., Jeonglyeon Chi, Samnae Myeon, Cheonla-buk Do, Korea, 16. vii. 1991, M. T. Chŭjŏ leg.

Gen. distr.: Korea & Japan (Hokkaido, Honshu, Shikoku & Kyushu).

13. *Triplax japonica* Crotch*

Triplax japonica Crotch, 1873, Ent. Monthl. Mag., 9: 189 (Japan).

Spec. exam.: 31 exs., Dooryu Dong, Joochun Myeon, Samchung Gun, Gyeongsang-nam Do, Korea, 25. ix. 1991, M. T. Chŭjŏ leg.

Gen. distr.: Korea, Sachalin & Japan (Hokkaido, Honshu, Shikoku & Kyushu).

14. *Triplax sibirica connectens* (Lewis)

Cyrtotriplax connectens Lewis, 1887, Ann. Mag. Nat. Hist., [6], 20(115): 68 (Japan: Honshu).

Spec. exam.: 1 ex., Dooryu Dong, Joochun Myeon, Samchung Gun, Gyeongsang-nam Do, Korea, 25. ix. 1991, M. T. Chŭjŏ leg.

Gen. distr.: Korea, N.-E. & N. China, E. Siberia & Japan (Hokkaido, Honshu, Shikoku, Kyushu, Tanegashima Is. & Yakushima Is.).

15. *Neotriplax lewisi* (Crotch)*

Cyrtotriplax lewisi Crotch, 1873, Ent. Monthl. Mag., 9: 189 (Japan: Kyushu).

Spec. exam.: 4 exs., Naelyong Ri, Samnae Myeon, Namweon Gun, Jeongra-buk Do, Korea, 26. ix. 1991, M. T. Chŭjŏ leg.; 4 exs., Samjeong Ri, Macheong Myeon, Hamyang Gun, Gyeongsang-nam Do, Korea, 29. ix. 1991, M. T. Chŭjŏ leg.

Gen. distr.: Korea & Japan (Honshu, Shikoku & Kyushu).

16. *Pselaphandra inornata atrocephala* subsp. nov.

This new subspecies is closely related with the nominate species, but is easily separated from the latter by the following characters: much larger in general size, head black to blackish brown, ultimate segment of maxillary palpe about 5 times as wide as long.

Length: 4.1–6.5mm. Width: 2.1–3.5mm.

Holotype: male (preserved in the collection of Prof. C. E. Lee, Kyungpook Natio. Univ.), Dooryu Dong, Joochun Myeon, Samchun Gun, Gyeonsam-nam Do, Korea, 25. ix. 1991, M. T. Chŭjŏ leg. Paratopotypes: 21 males & 20 females, same collecting data as holotype. Paratypes: male & 6 females, Kwangnung, Pochon Gun, Kyonggi Do, Korea, 14-19. v. 1992, M. T. Chŭjŏ leg.

Distr.: Korea.

ACKNOWLEDGEMENT

We are very grateful Director general Jae Myeong Jo of Forest Research Institute of Korea, and Director Seung Kul Park of Chung-bu Forest Experiment Station, Korea for their various help to our collecting trip under the program of the Korea-Japan Co-operative Science Program on "The Evolution and Biogeography of the Insects in the East Asia". And also, we express our cordial thanks to Prof. Dr. Chang Young Lee of Kangweon National University, Korea and Dr. Jong Kuk Kim of Forest Research Institute, Korea, for their miscellaneous help to our mentioned above trip. We wish to express our appreciation to Prof. Dr. K. Morimoto, Entomological Laboratory of Kyushu University for his continual and valuable guidance. And we are thankful to Assoc. Prof. Dr. O. Tadauchi and Assist. Prof. Dr. S. Nomura of Entomological Laboratory of Kyushu University for their various cooperation for this work.

REFERENCES

- Cho, P. S., 1957. A systematic catalogue of Korean Coleoptera. *Humanities and Sciences, Korea Univ.*, 2: 173-338.
- 1963. Insects of Quelpart Island (Cheju-do). *Humanities and Sciences, Korea Univ.*, 6: 159-242 (in Korean).
- Chûjô, M., 1936. Erotyl. Fauna Nipponica, X, fasc. 8, (5), Ins.-Col., 193 pp., Sanseido Co. Ltd., Tokyo, Japan.
- 1969. Fauna Japonica, Ins.-Col.-Erotyl., 316 pp., Academic Press of Japan, Tokyo.
- Chûjô, M. & M. T. Chûjô, 1988. A catalog of the Erotylidae (Insecta, Coleoptera) from the Old World (excl. the Ethiopian Region). *Esakia, Kyushu Univ. Publ. Ent.*, (26): 139-185.
- 1990. A catalog of the Erotylidae (Insecta, Coleoptera) from the Old World (excl. the Ethiopian Region). *Esakia, Kyushu Univ. Publ. Ent.*, (29): 1-67.
- Crotch, 1873. A descriptive list of Erotylidae, collected by Geo. Lewis, Esq., in Japan. *Ent. Monthl. Mug.*, 9: 184-189.
- Krivolutskaya, G. O. & A. B. Yegorova, 1992. Key to the identification of the insects of the Soviet Far East. III. Erotylidae, pp. 285-303, Figs. 128-136. Nauka, Leningrad. (in Russian)
- Lee, Y.-I. et al., 1985. Insect fauna of Mt. Halla. Rep. Acad. Surv., Hallasan(Mt.) Nat. Pres., Cheju-do, Korea: 404.
- Lewis, G., 1874. Descriptions of three species of Erotylidae. *Ent. Monthl. Mug.*, 11: 78-79
- 1879. On certain new species of Coleoptera from Japan. *Ann. Mag. Nat. Hist.*, [5], 4(24): 459-467.
- 1883. On three new species of Japan Erotylidae, and notes of others. *Ent. Monthl. Mag.*, 20: 139-140.
- 1887. A list of fifty Erotylidae from Japan, including thirth-five new species and four new genera. *Ann. Mug. Nat. Hist.*, [5], 20(115): 53-73.

- Nakane, T., 1937. Notes on the distribution on two species of the beetles from Japan. *Konchu-sekui*, **41**(481): 356.
- 1961. New or little-known Coleoptera from Japan and its adjacent regions, XV. *Fragm. Col., Tokyo*, (1): 1-6, Figs. 1-2.
- 1981. New or little-known Coleoptera from Japan and its adjacent regions, XXXIV. *Rep. Fac. Sci. Kagoshima Univ. (Earth. Sci. & Biol.)*, (14): 43-53, 9 figs.
- Okamoto, H., 1924. The insect fauna of Quelpart Island (Saishu-to). *Bull. Agr. Exper. Stat. Gov. -Gener., Chosen*, 1(2): 159.
- Reitter, E., 1879. Verzeichniss der von H. Christoph in Ost-Sibirien gesammelten Clavicomien etc. *Deutsche Ent. Zeit.*, **23**(2):209-226.
- Sasaji, H., 1985. Erotylidae. in *Color. Illustr. Col. Japan*, 3: 217-229, Pls. 35-37.
- Solsky, S., 1871. Coleopteres de la Sibirie orientale. *Horae Soc. Ent. Rossicae*, 8: 232-277.

EXPLANATION OF PLATE 1

- A. *Microsfernus tokioensis* Nakane
- B. *Dacne (Dacne) picta* Crotch
- C. *Dacne (Dacne) fungorum nigrocephara* subsp. nov.
- D. ditto
- E. *Dacne (Dacne) zonaria* Lewis
- F. *Episcapha (Episcapha) flavofasciata flavofasciata* Reitter
- G. *Megalodacne (Megalodacne) bellula* Lewis
- H. *Episcapha (Psiloscapa) morawitzi* (Solsky)

EXPLANATION OF PLATE 2

- A. *Aporotritoma arakii fuscocephara* subsp. nov.
- B. *Aporotritoma nigrovariegata intersecta* subsp. nov.
- C. *Triplax devia* Lewis
- D. *Aporotritoma consobrina* (Lewis)
- E. *Triplax sibirica connectens* (Lewis)
- F. *Triplax japonica* Crotch
- G. *Pselaphandra inornata atrocephara* subsp. nov.
- H. *Neotriplax lewisi* (Crotch)
- I. *Aulacochilus (Aulacochilus) luniferus decoratus* Reitter

PLATE 1

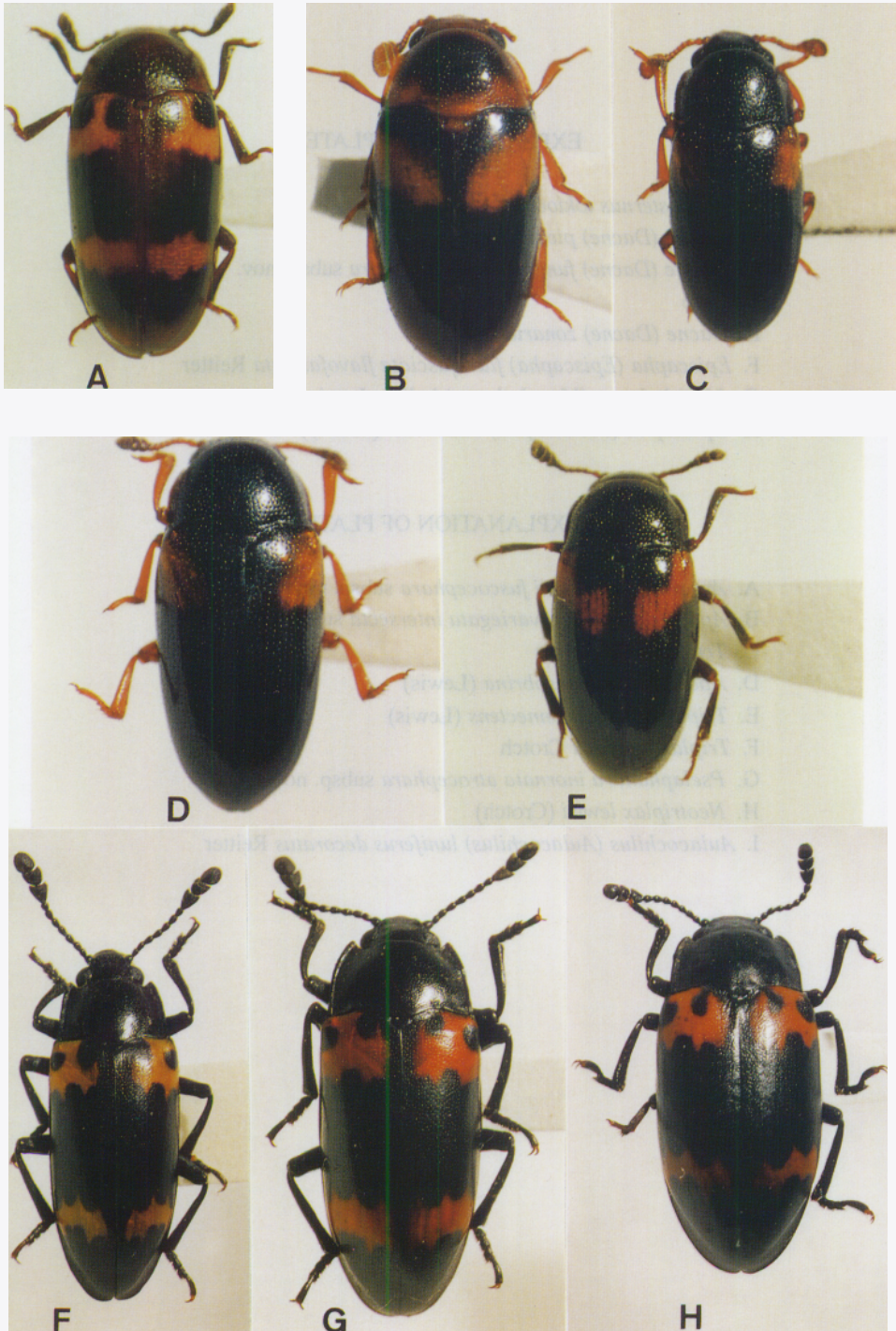


PLATE 2

