

A new species of *Laccobius* Erichson, 1837 (Hydrophilidae, Coleoptera) from the Chinese Himalaya, with comments on taxonomic status of subgenera *Glyptolaccobius* Gentili, 1989 and *Cyclolaccobius* Gentili, 1991 and additional faunistic records from China

Fenglong Jia¹, Jia-Hui Chen¹, Martin Fikáček²

1 Institute of Entomology, Life Science School, Sun Yat-sen University, Guangzhou, 510275, Guangdong, China

2 Department of Entomology, National Museum, Cirkusová 1740, Praha 9, CZ - 19100, Czech Republic

Corresponding author: Martin Fikáček (mFikacek@gmail.com)

Academic editor: Pavel Stoew | Received 20 March 2019 | Accepted 12 September 2019 | Published 14 November 2019

<http://zoobank.org/690B0BA9-1209-45FE-B2B1-863815F0B2A4>

Citation: Jia F, Chen J-H, Fikáček M (2019) A new species of *Laccobius* Erichson, 1837 (Hydrophilidae, Coleoptera) from the Chinese Himalaya, with comments on taxonomic status of subgenera *Glyptolaccobius* Gentili, 1989 and *Cyclolaccobius* Gentili, 1991 and additional faunistic records from China. ZooKeys 889: 65–80. <https://doi.org/10.3897/zookeys.889.34690>

Abstract

A new species of the water scavenger beetle, *Laccobius* (*Glyptolaccobius*) *motuoensis* **sp. nov.**, is described from Motuo County, Xizang, China and its diagnostic characters are illustrated. Examination of this new species and re-examination of previously described species revealed that the separation of the subgenus *Glyptolaccobius* Gentili, 1989 and *Cyclolaccobius* Gentili, 1991 is artificial: both subgenera are hence combined here. *Cyclolaccobius* **syn. nov.** is synonymized with *Glyptolaccobius*, and the latter is shown to be diagnosed by 7-segmented antennae as a unique synapomorphy. All species treated until now under *Cyclolaccobius* are here transferred to *Glyptolaccobius*, with the only exception of *L. hingstoni* Orchymont, 1926, *L. jumlanus* Gentili, 2015 and *L. zugmayeri* Knisch, 1910 which are tentatively transferred to the subgenus *Hydroxenus* Wollaston, 1867, as their antennae bear eight antennomeres. Three species are recorded for the first time from China: *L. (Microlaccobius) orientalis* Knisch, 1924 from Xizang, *Laccobius (M.) exilis* Gentili, 1974 from Xinjiang, and *Laccobius (M.) sublaevis* J. Sahlberg, 1900 from Xinjiang. Additional faunistic data from China are provided for the following species: *L. (Microlaccobius) hammondi* Gentili, 1984, *Laccobius (M.) formosus* Gentili, 1979, *Laccobius (Hydroxenus) hingstoni* d'Orchymont,

1926, *Laccobius* (*Glyptolaccobius*) *yunnanensis* Gentili, 2003, *Laccobius* (*Compsolaccobius*) *decorus* (Gyllenhal, 1827), *Laccobius* (*Dimorpholaccobius*) *bipunctatus* (Fabricius, 1775), *Laccobius* (*D.*) *striatulus* (Fabricius, 1775), *Laccobius* (s. str.) *bedeli* Sharp, 1884, *L.* (s. str.) *binotatus* d'Orchymont, 1934, *Laccobius* (s. str.) *cinereus* Motschulsky, 1860, and *Laccobius* (s. str.) *minutus* (Linnaeus, 1758).

Keywords

Aquatic beetles, new combination, new synonym, Oriental Region, Palearctic Region, water scavenger beetle.

Introduction

Since the species of the genus *Laccobius* Erichson, 1837 occurring in China and neighboring areas were reviewed by Gentili (1995, 2003) and Jia et al. (2013a), and only three species of this genus were described from this region more recently (Jia et al. 2013b; Gentili 2015; Zhang and Jia 2017). The fauna of the eastern Himalayas and neighboring mountain systems have not yet been investigated properly and the discovery of additional species is expected.

In total, 34 species of *Laccobius* have been recorded from China to date (Hansen 1999; Short and Fikáček 2011; Fikáček et al. 2015; Zhang and Jia 2017). Here, we summarize new findings based on the material collected in Xinjiang, Qinghai, Xizang and northwestern Sichuan during 2016–2018 deposited in the collection of Sun Yat-sen University, Guangzhou, China. A new species is described and three species are reported from China for the first time. Additional faunistic records are provided for several other species. The total number of *Laccobius* species occurring in China now rises to 38. The examination of the new species also urged us to re-examine the antennal morphology of the species assigned to the subgenera *Glyptolaccobius* Gentili, 1989 and *Cyclolaccobius* Gentili, 1991; this is revealed to be unique for these two subgenera indicating that they should be combined here into a single subgenus.

Material and methods

A few specimens were dissected for each species examined. After 8–10 hours in 10% KOH at room temperature, male genitalia were transferred to a drop of distilled water, remaining membranes were removed under a compound microscope, and the cleaned genitalia was subsequently mounted into a drop of glycerin on a piece of transparent plastic attached below the respective specimen. Habitus photographs were taken using a Zeiss Discovery V20 with Zeiss AxioCam HRC. Photographs of genitalia were taken using Zeiss Axioskop 40 binocular microscope with a QIM-AGING Micropublisher 3.3 RTV camera; the pictures were subsequently combined with the Auto-Montage software. Scanning electron microscope photographs were taken using a Phenom Pro SEM.

Morphological terminology largely follows Gentili and Fikáček (2009) and Jia et al. (2013a).

Examined specimens are deposited in the following collections:

NMPC National Museum, Prague, Czech Republic;

SYSU Biological Museum, Sun Yat-sen University, Guangzhou, China.

Results

Description of new species

Laccobius (Cyclolaccobius) motuoensis sp. nov.

<http://zoobank.org/1D637BE4-2A99-4400-8386-9B6B25C87EE3>

Figs 1–25

Type locality. China, Xizang, Linzhi Prefecture, Motuo County, Lagong, 29°18'50"N, 95°19'07"E.

Type material. *Holotype*: ♂ (SYSU): China, Xizang, Linzhi Prefecture, Motuo County, Lagong (中国, 西藏, 林芝, 墨脱县, 拉贡), 29°18'50"N, 95°19'07"E, 1271 m. 22.vi. 2018, Shi-shuai Wang & Zu-long Liang let. (transcribed from Chinese). *Paratypes* (47 spec.): 39 spec. (SYSU, NMPC): same label data as the holotype; 8 spec. (SYSU): China, Xizang: near road of Motuo to Bomi, Wudang waterfall, 18.viii.2018, Run Zhou.

Diagnosis. Length 1.9–2.2 mm. Dorsal surface dark brown or black with broad lateral yellow band on pronotum and elytra, posterior half of elytra yellowish. Head and pronotum without shagreen on interstices. Head without pale preocular spots. Antenna with seven antennomeres, the third antennomere very small, globular. Elytra often with a pair of yellow spots on the base of third primary series of punctures. Elytra without sulci, with 10 primary series of punctures; primary series of punctures strong and coarse, secondary ones consisting of smaller and more scarcely arranged punctures, punctures with short yellow setae. Aedeagus: total length 0.45 mm; median lobe as long as parameres, broad basally, narrowest medially, subapically with a series of backward directed setae; parameres subrectangular apically, almost as wide as medial lobe at apex.

Description. Total length 1.9–2.2 mm (holotype: 2.15 mm); maximum width 1.35–1.45 mm (holotype: 1.4 mm). Total length / total width ratio = 1.5. Body oval, moderately convex, maximum width at anterior third of elytra (Fig. 1).

Head. Black with greenish reflection, without preocular spots, smooth. Labrum about 2.7× as wide as long, without specula in both sexes, feebly emarginated on anterior margin, surface densely punctured (Fig. 7). Clypeus and frons blackish, surface with irregularly arranged punctures, punctures sparse and less impressed than on labrum, each puncture with decumbent white seta on disc, punctures in anterior corner of clypeus as dense as on labrum. Frontoclypeal suture scarcely apparent. Eyes oblong, oblique (Fig. 8), closest to each other posteriorly, slightly protruding laterally, minimum interocular distance in dorsal view 2.7× the width of one eye. Mentum with mesh-like microsculpture anteriorly and laterally (Fig. 7), without punctures, but



Figures 1–6. *Laccobius* (*Glyptolaccobius*) *motuoensis* sp. nov. **1, 2** habitus (**1** dorsal view **2** lateral view) **3, 4** base of the elytron (**3** specimen with yellow spot **4** specimen without yellow spot) **5, 6** male genitalia (**5** dorsal view **6** lateral view).

smooth and with a few punctures in posterior half; submentum smooth with sparse punctures. Maxillary palpi (Fig. 14) yellowish, not becoming dark at extreme apex; palpomere 2 almost same length as palpomere 3, palpomere 4 asymmetrical, inner margin straight and outer margin convex, ca. 1.5× as long as palpomere 3. Apical labial palpomere asymmetrical with straight inner face and convex outer face (Fig. 7), about as long as penultimate one. Antennae with 7 antennomeres (Fig. 9), yellow brown with antennal club of the same color; scape ca. 2.2× as long as pedicel, antennomere 3 very small, globular, cupule globular and asymmetrical; antennomeres 5–7 with densely arranged setae, antennomere 7 constricted near apex.

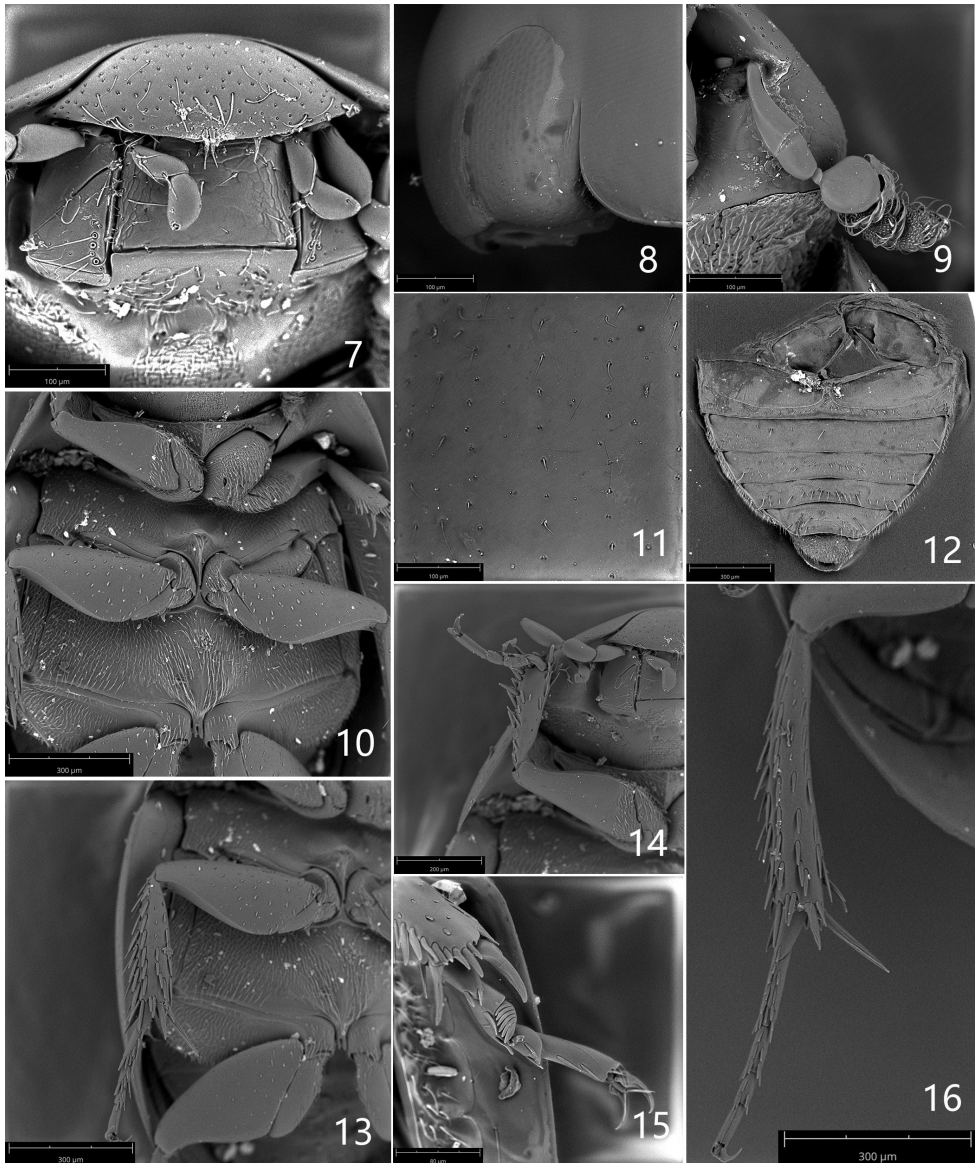
Thorax. Pronotum transverse, smooth; black with greenish reflection, lateral margins with yellow stripe that extends to posterior margin near posterior corner (Figs 1, 2), the yellow patch with posterior margin 2× as wide as anterior margin; punctures coarse and sparse, bearing decumbent yellowish setae; lateral stria fine, ending in posterior corner, but shortly continuous along anterior margin. Scutellar shield equilaterally triangular, black with few punctures. Prosternum black with dense decumbent pubescence, with a longitudinal keel medially (Fig. 10). Mesoventrite with arrow-head-shaped elevation (Fig. 10), the top of the elevation with a tuft of long setae; a longitudinal carina reaching to posterior margin of mesocoxae (Fig. 10). Metaventrite pubescent with a very narrow longitudinal glabrous area medioposteriorly (Fig. 10). Elytra smooth, slightly elongate, ca. 1.1× as long as wide, dark brown with wide lateral yellow margin that always narrower than posterior margin of pronotal lateral yellow margin (Figs 1, 4); posterior half yellow, fused with lateral yellow margin (Figs 1, 2); base of elytra with a pair of distinct pale yellow spots ca. at mid width (Figs 1, 3), sometimes elytra almost black on disc, and the basal yellow spot absent or unclear (Fig. 4); primary series punctures not sulciform; primary series of punctures strong and coarse, regularly arranged; secondary ones with small and scarce punctures (Fig. 11). Epipleura oblique, ending at level of metafemora.

Legs. Yellow brown. Trochanters pubescent; profemora with anterior surface densely pubescent basally, with tibial grooves; protibiae smooth, bearing stiff setae (Fig. 14). Mesotrochanters and mesofemora smooth (Fig. 13), the latter with tibial grooves; mesotibiae with longitudinal rows of stiff setae (Fig. 13). Metatrochanters and metafemora smooth (Fig. 13), the latter with tibial grooves; metatibiae with longitudinal rows of stiff setae, long spur as long as first and second tarsomeres combined (Fig. 16). Tarsal natatory setae nearly absent. Legs with five tarsomeres; second metatarsomere ca. 1.4× as long as metatarsomere 3 (Fig. 16).

Abdomen. Ventrites 1–5 smooth, without microsculpture, sparsely pubescent; each ventrite with long setae posteriorly, ventrite 6 densely pubescent (Fig. 12).

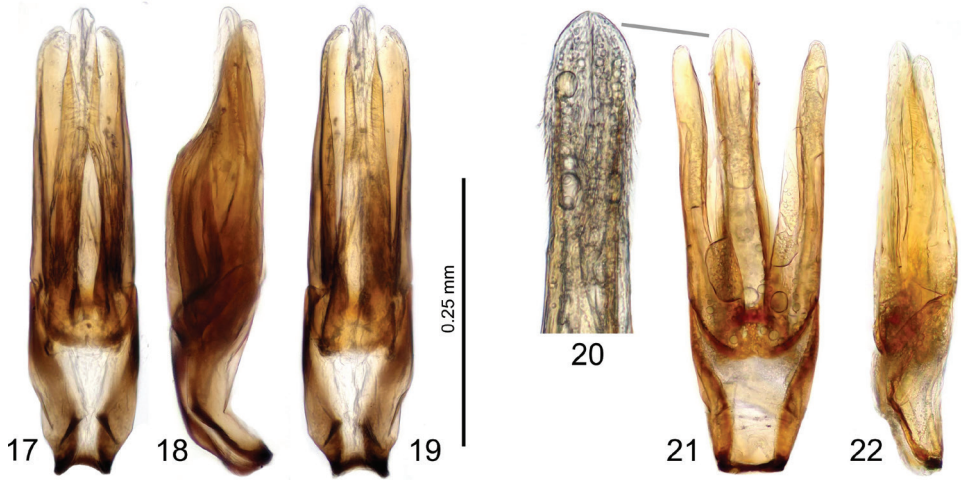
Male. Second protarsomere dilated, with a clasping structure that contains 7 lobes (Fig. 15).

Aedeagus. (Figs 5, 6). Total length 0.42 mm. parameres nearly 1.6× as long as phallobase. Phallobase 1.3× as long as wide. Median lobe as long as parameres, broad basally, gradually narrowed from base to mid length and then slightly widened to apex; with a series of backward directed setae subapically, apex rounded. Parameres subrectangular apically, almost as wide as medial lobe apically.



Figures 7–16. *Laccobius (Glyptolaccobius) motuoensis* sp. nov. **7** head, ventral view **8** compound eye in lateral view **9** antenna **10** ventral view of thorax **11** punctures on elytral base **12** abdomen **13** mesothoracic leg **14** prothoracic leg **15** male protarsus **16** metathoracic leg.

Differential diagnosis. This species closely resembles *L. yunnanensis* Gentili, 2003 and *L. sipeki* Gentili & Fikáček, 2009 in the genital morphology (including the series of long hairs on distal half of the median lobe) and the coloration of elytra having a dark base with small basal spots and widely pale apical portion. It can be distinguished from *L. yunnanensis* by having an elytral series regular throughout (somewhat irregular



Figures 17–22. Male genitalia of the species similar to *Laccobius motuoensis* sp. nov. **17–19** *L. sipeki* Gentili & Fikáček, holotype (**17** ventral **18** lateral **19** ventral) **20–22** *L. yunnanensis* Gentili, specimen from China: Yunnan: Rehai Hot springs (coll. NMPC) **20** detail of the apical half of medial lobe **21** ventral view **22** lateral view.



Figures 23–25. Habitats of *Laccobius motuoensis* sp. nov. Xizang: near road of Motuo to Bomi, Wudang waterfall.

at base in *L. yunnanensis*), primary series of punctures distinctly stronger and coarser than secondary ones (with some punctures at least as large as those on primary series in *L. yunnanensis*) and the median lobe ca. the same width in apical half (distinctly widened apically in *L. yunnanensis*). It can be distinguished from *L. sipeki* by the absence of the parasutural furrow (with distinct rather deep parasutural groove in *L. sipeki*) and the apex of the median lobe reaching the level of parameral apices only (slightly overlapping parameral apices in *L. sipeki*).

Etymology. This species is named after type locality.

Distribution. Only known from two close localities in the eastern Himalaya (Xizang, Motuo County).

Synonymy of the subgenera *Glyptolaccobius* and *Cyclolaccobius*

The subgenera *Glyptolaccobius* and *Cyclolaccobius* both contain species that inhabit mostly hygropetric habitats (seepages, wet rocks, sides of waterfalls) and are both characterized by large transverse eyes, which distinguish them from remaining groups of the genus *Laccobius*. The principal character distinguishing both subgenera is the presence (in *Glyptolaccobius*) or absence (in *Cyclolaccobius*) of the ‘parasutural furrow’, i.e., the longitudinal impression situated parallel to the suture in the posterior half of elytra. This character is usually clearly visible in *Glyptolaccobius* and clearly absent in *Cyclolaccobius*, but confusion still happens: Gentili (2006) and Gentili and Fikáček (2009) described three species of *Glyptolaccobius* (*L. silvester* Gentili, 2006, *L. hanka* Gentili & Fikáček, 2009 and *L. josefi* Gentili & Fikáček, 2009) which were later transferred to *Cyclolaccobius* by Gentili (2012). Both subgenera were mentioned as bearing 8-segmented antenna, similarly to all other *Laccobius* species (see Gentili 2006, fig. 3).

Recently, Zhang and Jia (2017) described a new *Glyptolaccobius* species from Yunnan, China (*L. yinziweii* Zhang & Jia, 2017) which is unusual among all known *Laccobius* as its antenna consisted of seven antennomeres only: scape, pedicel, one intermediate antennomere (instead of two in other *Laccobius* species), cupule and three-segmented antennal club (see Zhang and Jia 2017: figs 8, 9) showing scanning electron micrographs of the antennae). The examination of the antennal morphology of *L. motuoensis* described in this paper surprisingly revealed the same morphology with only seven antennomeres. In contrast to *L. yinziweii*, *L. motuoensis* clearly lacks the parasutural furrow, and both species sharing the unique antennal morphology are hence members of different subgenera. Moreover, the genital morphology of *L. motuoensis* closely resembles that of *L. yunnanensis* (a member of *Cyclolaccobius*) and *L. sipeki* (member of *Glyptolaccobius*). In addition, the elytral coloration of *L. motuoensis*, with pale spots basally, completely dark portion subbasally and at mid length and a pale portion in the apical third to fourth of the elytra, is found in a group of species of which some are treated as *Glyptolaccobius* (*L. sipeki*, *L. yinziweii*) and some as *Cyclolaccobius* (*L. josefi*, *L. hanka* and *L. nigrogilvus*).

All these observations motivated us to check the antennal morphology of a wider spectrum of species assigned to *Glyptolaccobius* and *Cyclolaccobius*. We examined the following species: *L. affinis* Knisch, 1927 (the type species of *Glyptolaccobius*), *L. pluvialis*

Gentili, 2006, *L. qinlingensis* Jia, Gentili & Fikáček, 2013, *L. sipeki* Gentili & Fikáček, 2009, *L. yinziweii* Zhang & Jia, 2017 (all latter with the parasutural furrow, i.e., members of *Glyptolaccobius*), *L. hanka* Gentili & Fikáček, 2009, *L. hainanensis* Jia, Gentili & Fikáček, 2013, *L. hingstoni* Orchymont, 1926, *L. martini* Jia, Song & Gentili, 2013, *L. nitidus* Gentili, 1984, *L. politus* Gentili, 1979, and *L. yunnanensis* Gentili, 2003 (all latter without parasutural furrow, i.e., members of *Cyclolaccobius*). All of these except *L. hingstoni* have 7-segmented antennae. Moreover, *L. hanka* (without parasutural furrow, member of *Cyclolaccobius*) and *L. pluvialis* (with parasutural furrow, member of *Glyptolaccobius*) were found as closely related sister taxa in the molecular phylogeny of Tous-saint and Short (2018). All this evidence clearly indicates that species assigned at the moment to the subgenera *Glyptolaccobius* and *Cyclolaccobius* likely form a monophyletic group characterized by a unique synapomorphy within *Laccobius*, i.e., the 7-segmented antenna. The presence/absence of the parasutural furrow seems to be a phylogenetically flexible character within *Laccobius* since species that closely resemble each other in other characters sometimes differ in the presence/absence of the parasutural furrow only. We hence conclude that keeping *Glyptolaccobius* and *Cyclolaccobius* as two subgenera is actually more confusing than helpful for taxonomic work, even if these subgenera would be considered just as artificial groups designed to facilitate taxonomic work on this large genus (until a phylogenetic study is performed). For this reason, we are performing the following taxonomic changes here:

1. We synonymize *Glyptolaccobius* Gentili, 1989 with *Cyclolaccobius* Gentili, 1991 syn. nov.
2. *Glyptolaccobius* sensu nov. is diagnosed by having antennae with seven antennomeres (in contrast to eight antennomeres in remaining subgenera of *Laccobius*). All species currently treated under *Cyclolaccobius* and having 7-segmented antennae are here transferred to *Glyptolaccobius*.
3. The only three species treated until now as *Cyclolaccobius* which do not have 7-segmented antennae (i.e., *L. hingstoni*, *L. zugmayeri* Knisch, 1910 and *L. yumlanus* Gentili, 2015; see Gentili 2015) are tentatively transferred to the subgenus *Hydroxenus* Wollaston, 1867 (= *Platylaccobius* Gentili, 1974) where they were assigned originally before being transferred to *Cyclolaccobius*. These three species differ from other *Cyclolaccobius* and *Glyptolaccobius* species by having a much larger body size, elongate oval body, eyes not so transversely reniform and by their biology: *L. hingstoni* was collected in the littoral zone of standing waters (ponds, lakes) i.e. not in hygropetric habitats or habitats associated with stony streams which are typical for the *Glyptolaccobius*+*Cyclolaccobius* species.

Additional studies are necessary to understand the systematics of *Laccobius* and to test the phylogenetic position of *L. zugmayeri* and related species as well as to test the monophyly of the subgenera. At the moment, only the subgenus *Glyptolaccobius* in the new meaning (i.e., containing all *Laccobius* species with 7-segmented antenna, and characterized by a hygropetric lifestyle) and *Yateberosus* (a New Caledonia endemic subgenus with the larva having closed spiracular system and abdomen bearing tracheal

gills, see Fikáček et al. 2018) seem to be supported by unique morphological synapomorphies combined with geographically limited range (in *Yateberosus*) or a specific lifestyle (in *Glyptolaccobius*), and hence are candidates for monophyletic groups. The monophyly of all other subgenera is doubtful and needs to be further tested.

Key to species of *Laccobius* (*Glyptolaccobius*) from China

Gentili (1995) provided a series of keys for the identification of all *Laccobius* species known from China and neighboring areas. These keys are still up-to-date for most subgenera and include even the species recorded subsequently as new for China (Jia et al. 2013; this paper, see below). Only two parts need to be updated: (1) *Laccobius jumlanus* Gentili, 2015 was mistakenly treated under the name *L. zugmayeri* Knisch, 1910 in the key (see Gentili 2015 for details); and (2) the key of species of the subgenus *Glyptolaccobius* sensu nov. needs to be updated as all species described as new since 1995 belong to this subgenus. The following key to *Glyptolaccobius* sensu nov. in China is modified from Gentili (1996, 1998).

- 1 Elytra with distinct parasutural furrows..... **2**
- Elytra without distinct parasutural furrows **3**
- 2 Body length 2.7–2.9 mm; elytra without pale yellow spots at base; median lobe bearing lateral subapical rows of stout spines (Jia et al. 2013: figs 3–5).....
..... ***L. qinlingensis* Jia, Gentili & Fikáček**
- Body length 1.8–2.1 mm; base of elytra with two or four distinct pale yellow spots; median lobe without lateral subapical rows of spines (Zhang and Jia 2017: figs 6, 7)..... ***L. yinziwei* Zhang & Jia**
- 3 Body length 2.0–2.8 mm; elytral borders and epipleura are swollen at base; median lobe narrowly pointed apically (Gentili 1995: figs 52, 53) ***L. nitidus* Gentili**
- Body length 1.8–2.1 mm; elytral borders and epipleura are not swollen at base; median lobe rounded apically **4**
- 4 Apical part of the median lobe without series of fine setae. Elytra completely black at the base. Species from Hainan and Taiwan **5**
- Apical part of the median lobe with series of fine setae. Elytra with or without pale basal spots. Continental species..... **6**
- 5 Median lobe strongly constricted subapically (Jia et al. 2013: figs 10–12). Hainan..... ***L. hainanensis* Jia, Gentili & Fikáček**
- Median lobe indistinctly constricted subapically (Jia et al. 2013: figs 14–16). Taiwan ***L. politus* Gentili**
- 6 Elytral series regular throughout; primary series of punctures distinctly stronger and coarser than secondary ones; median lobe ca. of the same width in apical half (Figs 5, 6)..... ***L. motuoensis* sp. nov.**
- Elytral series somewhat irregular at base, with some secondary punctures at least as large as those on primary series; median lobe distinctly widened apically (Figs 20–22) ***L. yunnanensis* Gentili**

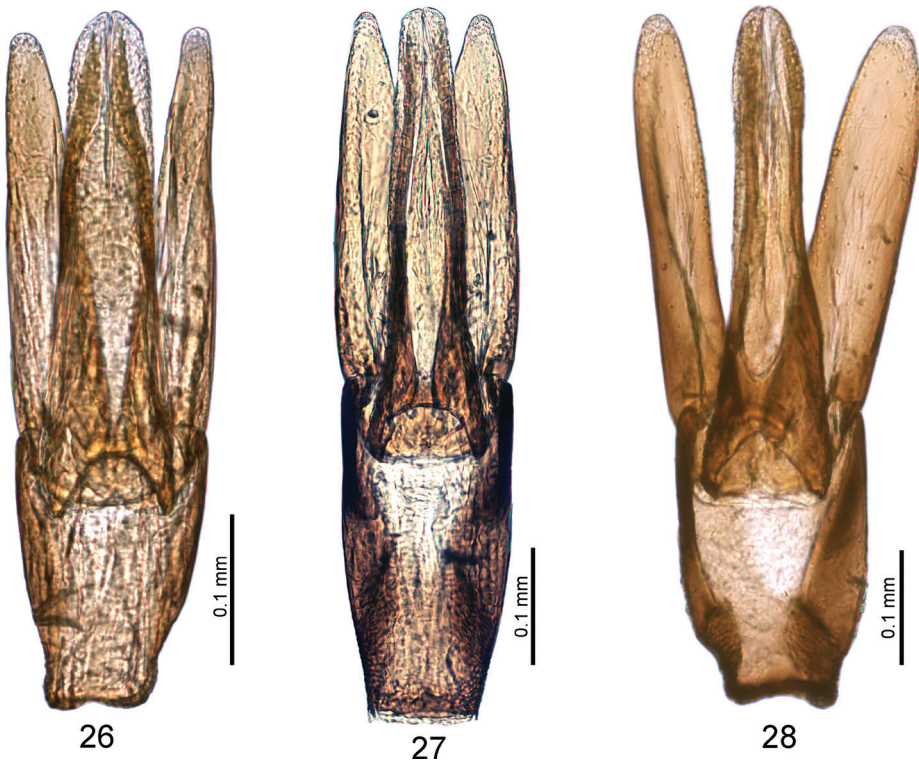
Additional faunistic data to China***Laccobius (Microlaccobius) orientalis* Knisch, 1924**

Fig. 27

Material examined. XIZANG: 41 spec. (SYSU): Linzhi, Bomi County, Hagu township, Taohuagou, 29°59'42"N, 95°37'15"E, 2673 m, 20.vi.2018, Shi-shuai Wang & Zu-long Liang leg.

Diagnosis. Body length 2.8–3.0 mm. Frons between eyes ca. 2.6–3.0× as wide as one eye in dorsal view. Pronotum black or dark brown medially, with a pair of light spots at anterior margin, with broad yellow band laterally, without shagreen, smooth and shining. Punctures of third and fifth elytral rows uniform, arranged almost in a straight line (a few punctures slightly out of line). Aedeagus (Fig. 27): Basal two-thirds of parameres almost parallel-sided, gradually narrowed towards apex in apical one-third, pointed apically; median lobe almost as wide as parameres basally, gradually narrowed towards apex, rounded apically.

Distribution. Widely distributed species, recorded from north Africa through Near East and Central Asia to the Himalaya and Tibetan Plateau (Hansen 1999, Fikáček et al. 2015). **New for China.**



Figures 26–28. Aedeagi of the species newly recorded from China (all based on Chinese specimens): **26** *Laccobius exilis* Gentili **27** *L. orientalis* Knisch **28** *L. sublaevis* Sahlberg.

***Laccobius (Microlaccobius) exilis* Gentili, 1974**

Fig. 26

Material examined. XINJIANG: 15 spec. (SYSU): Yili, Chabuchar, beside road, 43.77N, 81.15E, 574 m, 4.vii.2017, Rui-juan Zhang & Shi-shuai Wang leg.; 1 male (SYSU): Altai, Habahe County, Baishahu, 48.37N, 85.74E, 553 m, 10.vii.2017, Rui-juan Zhang & Shi-shuai Wang leg.

Diagnosis. Body length 2.3–2.7 mm. Frons between eyes ca. 2.8–3.0× as wide as one eye in dorsal view. Pronotum black or dark brown medially, without a pair of light spots at anterior margin, with broad yellow band laterally, without shagreen, smooth and shining. Punctures of third and fifth elytral rows uniform, arranged almost in a straight line (Gentili 1995: fig. 162). Aedeagus (Fig. 26) with parameres narrowed towards apex, rounded apically; median lobe wide throughout, slightly wider than parameres, especially in apical part.

Distribution. Widely distributed species, recorded from Turkey through Central Asia to the Himalaya, Myanmar and the Tibetan Plateau (Gentili 1995, Hansen 1999, Fikáček et al. 2015). **New for China.**

***Laccobius (Microlaccobius) sublaevis* J. Sahlberg, 1900**

Fig. 28

Material examined. XINJIANG: 1 male (SYSU): Bayinguoleng Mongolian Autonomous Prefecture, Hejing County, Gongnais Forest Farm, 43°14'15"N, 84°39'41"E, 2019 m, 1.vii.2017, Rui-juan Zhang, Shi-shuai Wang, Kai Chen & Yong-jiang Duan leg. 1 male (SYSU): Gongnais valley, 31.vii.2005, Ling Zhao leg.

Diagnosis. Size 2.8–3.0 mm. Frons between eyes ca. 2.8–3.0× as wide as one eye. Pronotum black or dark brown medially, without a pair of light spots at anterior margin, with broad yellow band laterally, without shagreen, smooth and shining. Punctures of third and fifth elytral rows in disorder, not arranged in straight lines (Gentili 1995: fig. 161). Aedeagus (Fig. 28) with median lobe slightly widened apically; parameres with subparallel sides, rounded apically.

Distribution. Central Asian species reaching to the Tibetan Plateau and the Himalaya Region (Gentili 1995, Fikáček et al. 2015). **New for China.**

***Laccobius (Microlaccobius) hammondi* Gentili, 1984**

New material examined. SICHUAN: 3 spec. (SYSU): Luding County, Moxi town, Yuejin village, a pool with sands, 29°44'6.1"N, 102°04'5.6"E, 2150 m, 30.vi–1.vii.2016, F.-L.Jia, R.B. Angus, Kai Chen, Z.-Q. Li leg.

Distribution. See Fikáček et al. (2015). **New for Qinghai-Tibetan Plateau.**

***Laccobius (Microlaccobius) formosus* Gentili, 1979**

New material examined. SICHUAN: 3 spec. (SYSU): Dayi County, Shitouhe River, 30°34–38'N, 102°16–23'E, 616–766 m, 4.vii.2017, F.-L. Jia & R.B. Angus leg.

Distribution. See Fikáček et al. (2015). **New for Sichuan.**

***Laccobius (Hydroxenus) hingstoni* d'Orchymont, 1926**

New material examined. XIZANG: 11 spec. (SYSU): Rikaze Prefecture, Jiangzi County, Zijin Wetland Park, 28°56'21"N, 89°33'50"E, 3974 m, 1.vii.2018, Shi-shuai Wang & Zu-long Liang leg.; 16 spec. (SYSU, NMPC): Shannan Prefecture, Langkazi County, Haweng village, 28°58'54"N, 90°23'44"E, 4432 m, 2.vii.2018, Shi-shuai Wang & Zu-long Liang leg.

Distribution. See Fikáček et al. (2015).

***Laccobius (Cyclolaccobius) yunnanensis* Gentili, 2003**

New material examined. YUNNAN: 5 spec. (SYSU): Lushui County, Pianma town, 26.01N, 98.62E, 1908 m, 19.v.2016. Yu-dan Tang & Rui-juan Zhang leg.

Distribution. China (Yunnan: Lushui, Mojiang), Myanmar.

***Laccobius (Compsolaccobius) decorus* (Gyllenhal, 1827)**

New material examined. QINGHAI: 1 male (SYSU), near Qinghaihu Lake, 27.vii.2017, Yang Liu leg.

Distribution. See Fikáček et al. (2015).

***Laccobius (Dimorpholaccobius) bipunctatus* (Fabricius, 1775)**

New material examined. XINJIANG: 9 spec. (SYSU): Altai prefectures, Xiaodonggou Forest Park, 47.94N, 88.15E, 1108 m, 12.vii.2017, Rui-juan Zhang & Shi-shuai Wang leg. 22 spec. (SYSU), Bayinguoleng Mongolian Autonomous Prefecture, Hejing County, Gongnais Forest Farm, 43°14'15"N, 84°39'41"E, 2019 m, 1.vii.2017, Rui-juan Zhang, Shi-shuai Wang, Kai Chen & Yong-jiang Duan leg. 12 spec. (SYSU), Altai, Bahahe County, Baihualin, 48.07N, 86.34E, 512 m, 7.vii.2017, Rui-juan Zhang & Shi-shuai Wang leg. 2 exs. (SYSU), Altai, Habahe County, Baishahu, 48.37N, 85.74E, 553 m, 10.vii.2017, Rui-juan Zhang & Shi-shuai Wang leg. 8 exs. (SYSU), Tacheng Prefecture, Natural Forest, 46.37N, 85.74E, 1042 m, 10.vii.2017, Rui-juan

Zhang & Shi-shuai Wang leg. 15 exs. (SYSU), Yili Kazak Autonomous Prefecture, Xinyuan County, Natural forest, 43°22'54"N, 83°33'52"E, 1282m, 2.vii.2017, Rui-juan Zhang, Shi-shuai Wang, Kai Chen & Yong-jiang Duan leg. 2 exs. (SYSU), Altai Prefecture, Burjin County, Kanas, 48.31N, 87.11E, 1336 m, 11.vii.2017, Rui-juan Zhang & Shi-shuai Wang leg. 4 exs. (SYSU), Tacheng Prefecture, Yikekure village, 46.81N, 85.98E, Rui-juan Zhang & Shi-shuai Wang leg.

Distribution. See Fikáček et al. (2015).

Laccobius (Dimorpholaccobius) striatulus (Fabricius, 1775)

New material examined. XINJIANG: 6 exs. (SYSU), Tacheng Prefecture, Emin County, Shuimogou, 46.39N, 83.93E, 863 m, 6.vii.2017, Rui-juan Zhang & Shi-shuai Wang leg. 40 spec. (SYSU), Altai Prefecture, Keketuohai wetland, 47°01'16"N, 89°45'22"E, 1343 m, 13.vii.2017, Rui-juan Zhang, Shi-shuai Wang, Kai Chen & Yong-jiang Duan leg. 108 spec. (SYSU), Altai, Habahe County, Baishahu, 48.37N, 85.74E, 553 m, 10.vii.2017, Rui-juan Zhang & Shi-shuai Wang leg. 16 spec. (SYSU), Altai, Bahahe County, Baihualin, 48.07N, 86.34E, 512 m, 7.vii.2017, Rui-juan Zhang & Shi-shuai Wang leg. 5 spec. (SYSU), Habahe County, Tiereketi Town, 48.42N, 86.73E, 1242 m, 10.vii.2017, Rui-juan Zhang & Shi-shuai Wang leg. 3 spec. (SYSU), Altai Prefecture, a small pool beside road, 47.86N, 88.10E, 1107 m, Rui-juan Zhang & Shi-shuai Wang leg. 4 spec. (SYSU), (SYSU), Bayinguoleng Mongolian Autonomous Prefecture, Hejing County, Gongnais Forest Farm, 43°14'15"N, 84°39'41"E, 2019 m, 1.vii.2017, Rui-juan Zhang, Shi-shuai Wang, Kai Chen & Yong-jiang Duan leg. 2 spec. spec. (SYSU), Tacheng Prefecture, Yikekure village, 46.81N, 85.98E, Rui-juan Zhang & Shi-shuai Wang leg.

Distribution. See Fikáček et al. (2015).

Laccobius (s. str.) bedeli Sharp, 1884

New material examined. XINJIANG: 1 male (SYSU), Altai, Habahe County, Baishahu, 48.37N, 85.74E, 553 m, 10.vii.2017, Rui-juan Zhang & Shi-shuai Wang leg.

Distribution. See Fikáček et al. (2015). **New for Xinjiang.**

Laccobius (s. str.) binotatus d'Orchymont, 1934

New material examined. QINGHAI: 12 spec. (SYSU), Huangzhong County, Kangoumen village, 36°29'24"N, 101°40'2"E, 2502 m, 28.viii.2018, Zu-long Liang & Jun-wei Deng leg.; 3 spec. (SYSU), Huangzhong County, Yajia village, 36°27'41"N, 101°42'38"E, 2610 m, 28.viii.2018, Zu-long Liang & Jun-wei Deng leg.; 4 spec. (SYSU), Huangzhong County, Shangshanzhuang Village, 36°26'33"N, 101°40'51"E,

2674 m, 28.viii.2018, Zu-long Liang & Jun-wei Deng leg.; 4 spec. (SYSU), Ping'an County, Baijiacun village, 36°26'46"N, 102°3'28"E, 2240 m, 29.viii.2018, Zu-long Liang & Jun-wei Deng leg.; 1 male (SYSU), Huzhu County, Nanmenxian town, 36°59'21"N, 101°54'9"E, 2910 m, 30.viii.2018, Zu-long Liang & Jun-wei Deng leg. **SICHUAN:** 9 spec. (SYSU), Luding County, Moxi town, Yuejin village, a pool with sands, 29°44'6.1"N, 102°04'5.6"E, 2150 m, 30.vi-1.vii.2016, Fenglong Jia, Robert, R.B. Angus, Kai Chen & Zhi-qiang Li leg.

Distribution. See Jia et al. (2013a) and Fikáček et al. (2015). **New for Sichuan.**

Laccobius (s.str.) *cinereus* Motschulsky, 1860

New material examined. QINGHAI: 19 spec. (SYSU), Maduo, Yematan, 34°42'5"N, 98°4'5"E, 3178 m, 21.viii.2018, Zu-long Liang & Jun-wei Deng leg.; 15 spec. (SYSU), Maduo, Donggecuona Lake, 35°17'12"N, 98°42'22"E, 4085 m, 24.vii.2018, Zu-long Liang & Jun-wei Deng leg.; 54 spec. (SYSU), Gangcha, beside national road G135, 37°17'23"N, 100°14'49"E, 3178 m, 21.viii.2018, Zu-long Liang & Jun-wei Deng leg. **XINGJIANG:** 1 male (SYSU), Altai, Bahahe County, Baihualin, 48.07N, 86.34E, 512 m, 7.vii.2017, Rui-juan Zhang & Shi-shuai Wang leg.

Distribution. See Fikáček et al. (2015). **New for Xinjiang.**

Laccobius (s. str.) *minutus* (Linnaeus, 1758)

New material examined. XINJIANG: 23 spec. (SYSU), Altai prefectures, Xiaodonggou Forest Park, 47.94N, 88.15E, 1108 m, 12.vii.2017, Rui-juan Zhang & Shi-shuai Wang leg. 53 spec., (SYSU), Altai Prefecture, Burjin County, Kanas, 48.31N, 87.11E, 1336 m, 11.vii.2017, Rui-juan Zhang & Shi-shuai Wang leg. 92 spec. (SYSU), Altai Prefecture, Habahe County, Baihualin, 48.07N, 86.34E, 512 m, 7.vii.2017, Rui-juan Zhang & Shi-shuai Wang leg. 1 ex. (SYSU), Huocheng County, Daxigou, Fushoushan mount, 44.40N, 80.73E, 1201 m, 4.vii.2017, Rui-juan Zhang & Shi-shuai Wang leg.

Distribution. See Fikáček et al. (2015).

Acknowledgments

We thank Mr Zu-Long Liang, Sun Yat-sen University, for his help to prepare SEM photographs. We are grateful to Mr Zhou Run from the Chinese Academy of Sciences, Institute of Zoology, Beijing, China, for his donation of some specimens. This work was financially supported by National Natural Science Foundation of China (31772494) to F.-L. Jia and J.-H. Chen, and by the Ministry of Culture of the Czech Republic (DKRVO 2019-2023/5.I.a, National Museum, 00023272) to M. Fikáček.

References

- Fikáček M, Angus RB, Gentili E, Jia F, Minoshima YN, Prokin A, Przewoźny M, Ryndevich SK (2015) Family Hydrophilidae. In: Löbl I, Löbl D (Eds) Catalogue Palaearctic Coleoptera. Volume 2/1. Hydrophiloidea – Staphilinoidea. Revised and updated edition. Koninklijke Brill NV, Leiden and Boston, 37–76.
- Fikáček M, Minoshima Y, Jäch MA (2018) Larval morphology of *Yateberosus*, a New Caledonian endemic genus of *Laccobius* (Coleoptera: Hydrophilidae), with notes on ‘Berosus-like’ larvae in Hydrophiloidea. *Acta Entomologica Musei Nationalis Pragae* 58(1): 195–206. <https://doi.org/10.2478/aemnp-2018-0017>
- Gentili E (1989) Alcune novità sul genere *Laccobius* (Coleoptera, Hydrophilidae). *Annuario Osservatorio di Fisica terrestre e Museo Antonio Stoppani del Seminario Arcivescoville di Milano (NS)* 10[1987]: 31–39.
- Gentili E (1991) Elementi per una revisione del genere *Laccobius* (Coleoptera, Hydrophilidae). *Giornale italiano di Entomologia* 5: 381–389.
- Gentili E (1995) Hydrophilidae 3. The genus *Laccobius* Erichson in China and neighbouring areas (Coleoptera). In: Jäch MA, Ji L (Eds) *Water Beetles of China, Volume 1*. Zoologisch-Botanische Gesellschaft in Österreich and Wiener Coleopterologenverein, Wien, 245–286.
- Gentili E (2003) Hydrophilidae: III. Additional notes on the genus *Laccobius* Erichson in China and neighbouring areas (Coleoptera). In: Jäch MA, Ji L (Eds) *Water beetles of China, Vol. 3*. Zoologisch-Botanische Gesellschaft in Österreich and Wiener Coleopterologenverein, Wien, 411–429.
- Gentili E (2006) Revisional notes on the genus *Laccobius*. I. Subgenus *Glyptolaccobius* (Coleoptera, Hydrophilidae). *Acta Entomologica Musei Nationalis Pragae* 46: 57–76.
- Gentili E (2012) New or poorly known *Laccobius* of the Subgenus *Cyclolaccobius* Gentili, 1991 (Coleoptera: Hydrophilidae). *Giornale italiano di Entomologia* 13(57): 55–68.
- Gentili E (2015) The rediscovery of the type of *Laccobius zugmayeri* Knisch, 1910 and description of *Laccobius jumlanus* new species (Coleoptera, Hydrophilidae). *Giornale italiano di Entomologia* 14(60): 155–164.
- Gentili E, Fikáček M (2009) Taxonomic notes on *Laccobius*, subgenus *Glyptolaccobius*, with new records and description of four new species (Coleoptera: Hydrophilidae). *Acta Entomologica Musei Nationalis Pragae* 49(2): 607–623.
- Hansen M (1999) Hydrophiloidea (Coleoptera). In: Hansen M (Ed.) *World Catalogue of Insects*, Vol. 2. Apollo Books, Stenstrup, 416 pp.
- Jia F-L, Gentili E, Fikáček M (2013a) The genus *Laccobius* in China: new species and new records (Coleoptera: Hydrophilidae). *Zootaxa* 3635(4): 402–418. <https://doi.org/10.11646/zootaxa.3635.4.4>
- Jia F-L, Song K-Q, Gentili E (2013b) A new species of *Laccobius* Erichson, 1837 from China (Coleoptera: Hydrophilidae). *Zootaxa* 3734(1): 91–95. <https://doi.org/10.11646/zootaxa.3734.1.11>
- Zhang R-J, Jia F-L (2017) A new species of *Laccobius* Erichson and additional faunistic records of the genus from China, with a key to subgenus *Glyptolaccobius* Gentili (Coleoptera: Hydrophilidae). *Zootaxa* 4344(2): 395–400. <https://doi.org/10.11646/zootaxa.4344.2.14>