



An annotated catalogue of leaf beetles (Coleoptera: Megalopodidae, Orsodacnidae, and Chrysomelidae) of the Kaliningrad Region (Russia)

Vitalii I. Alekseev & Andris Bukejs

To cite this article: Vitalii I. Alekseev & Andris Bukejs (2014) An annotated catalogue of leaf beetles (Coleoptera: Megalopodidae, Orsodacnidae, and Chrysomelidae) of the Kaliningrad Region (Russia), *Zoology and Ecology*, 24:3, 219-238, DOI: [10.1080/21658005.2014.926601](https://doi.org/10.1080/21658005.2014.926601)

To link to this article: <http://dx.doi.org/10.1080/21658005.2014.926601>



Published online: 20 Jun 2014.



Submit your article to this journal [↗](#)



Article views: 42



View related articles [↗](#)



View Crossmark data [↗](#)



Citing articles: 1 View citing articles [↗](#)

An annotated catalogue of leaf beetles (Coleoptera: Megalopodidae, Orsodacnidae, and Chrysomelidae) of the Kaliningrad Region (Russia)

Vitalii I. Alekseev^{a,b,*} and Andris Bukejs^c

^aDepartment of Zootechny, FGBOU VPO “Kaliningrad State Technical University”, Sovetsky av. 1, 236000 Kaliningrad, Russia;

^bMAUK “Zoopark”, Mira av., 26, 236028 Kaliningrad, Russia; ^cVienības 42-29, LV-5401 Daugavpils, Latvia

(Received 27 January 2014; accepted 14 May 2014)

An annotated catalogue of leaf beetles (Coleoptera: Megalopodidae, Orsodacnidae, and Chrysomelidae) of the Kaliningrad Region (Russia) is presented. In total, 278 species are hitherto known. During the study, all available published sources of relevant information were reviewed and analyzed. All doubtful species recorded till now from the region are commented and removed from the list. The recent Kaliningrad Region's fauna of Chrysomelidae *sensu lato* is represented by 16 chorotypes. The species of Sibero-European (60 species, or 21.59%), Asiatic-European (57, or 20.51%), and Palaearctic (40, or 14.39%) chorotypes are considered to be predominant.

Dabartiniu metu Kaliningrado srityje (Rusija) žinomos 278 lapgraužių (Coleoptera: Megalopodidae, Orsodacnidae ir Chrysomelidae) rūšys. Anototame kataloge apžvelgtos ir išanalizuotos visos susijusios publikacijos. Pateikiami komentarai apie visas rūšis, kurių registravimas srityje abejotinas, jos išbrauktos iš sąrašo. Kaliningrado srities Chrysomelidae s. l. fauną sudaro 16 chorologinių grupių. Dominuoja Sibiro-Europos (60 rūšių, arba 21,59%), Azijos-Europos (57 rūšys, arba 20,51%) ir Palaearktikos (40 rūšių, arba 14,39%) chorologinių grupių rūšys.

Keywords: Megalopodidae; Orsodacnidae; Chrysomelidae; Kaliningrad Region; fauna

Introduction

The fauna of the leaf beetles of the Kaliningrad Region is not completely researched. The last checklist of Chrysomelidae *sensu lato* for the region was published 10 years ago (Alekseev 2003) and summarized the material the authors collected in 1989–2002 and the data from the last German faunistic catalogue of the Eastern-Prussian beetles (Bercio and Folwaczny 1979). Since the issue of this paper, new additional faunistic information has been published.

The aim of our study was to carry out a critical revision of the available bibliographical data, to compile the annotated catalogue of leaf beetles of the Kaliningrad Region according to modern systematics, and to perform a biogeographical analysis of the fauna.

Materials and methods

The species listed in the current catalogue are arranged in families, subfamilies, tribes, and subtribes. The order of higher taxa is arranged after the Catalogue of Palaearctic Coleoptera, Vol. 6 (Löbl and Smetana 2010); the synonymy and nomenclature for the species level were used after this catalogue as well. Species and genera are arranged alphabetically.

The catalogue of the Kaliningrad Region leaf beetles was compiled on the basis of published literature sources and revisions of beetle collections. The catalogues,

check-lists, and other faunistic literature on neighboring countries (Alexandrovitch et al. 1996; Lopatin and Nesterova 2005; Silfverberg 2010; Borowiec, Ścibior, and Kubisz 2011; Tamutis, Tamute, and Ferenca 2011; Bukejs 2013; etc.) have been used to compile a list of expected species for the fauna of the Kaliningrad Region. The species certainly recorded from the region are marked with an index number. The species removed from the current catalogue are marked by (-), but expected species for the Kaliningrad Region are placed in square brackets []. The state of the species (removed or expected) and reasons for such attribution are discussed in the “note” separately for each species.

The following information is given for each species: scientific name, references to bibliographic sources where the appropriate species is indicated for the fauna of the Kaliningrad Region, distribution of species in the Kaliningrad Region, and a chorotype code in square brackets [...]. The main synonyms for the species were mentioned after its scientific name.

The distribution in the Kaliningrad Region is given according to the administrative division of the region to administrative districts. Abbreviations of the districts: Bagr. – Bagrationovsky, Chern. – Chernyakhovsky, Gur. – Gur'evsky, Gus. – Gusevsky, Gvard. – Gvardeysky, Krasn. – Krasnoznamensky, Nem. – Nemansky, Nest. – Nesterovsky, Oz. – Ozersky, Pol. – Polessky, Pravd. – Pravdinsky, Slav. – Slavsky, Zel. – Zelenogradsky. If a

*Corresponding author. Email: alekseew0802@yahoo.com

locality is cited according to old literature (till 1979, when the material collected before 1945 was published), then the district name is followed by the German name of the locality in brackets (...). If the old literature does not contain precise data, we translate the note dealing with the species ("everywhere" or similar) or mark the species with a phrase "without localities." Such representation of data makes it possible to separate the old and recent data and to make approximate observation of faunal changes during the nineteenth to twentieth centuries.

The general species distribution is analyzed after Bienkowski (2004, 2007), Borowiec (1999, 2004), Hayashi, Morimoto, and Kimoto (1984), Löbl and Smetana (2010), Lopatin (1977, 1986), Lopatin and Kulenova (1986), Lopatin and Nesterova (2005), Medvedev (1982, 1992), Medvedev and Dubeshko (1992), and Warchałowski (2003).

The classification of chorotypes follows that suggested by Taglianti et al. (1999). The transcript of chorotype codes are: COS – Cosmopolitan, HOR – Holarctic-Oriental, PAO – Palaearctic-Oriental, OLA – Holarctic, PAL – Palaearctic, ASE – Asiatic-European, SIE – Sibero-European, WPA – West-Palaearctic, CEM – Centralasiatic-European-Mediterranean, CAE – Centralasiatic-European, TEM – Turano-European-Mediterranean, TUE – Turano-European, EUM – European-Mediterranean, EUR – European, CEU – Central-European, NEU – North-European.

Results and discussion

During the current study, an annotated catalogue of leaf beetles (Coleoptera: Megalopodidae, Orsodacnidae, and Chrysomelidae) of the Kaliningrad Region (western Russia) was compiled. Totally, 278 species belonging to 64 genera have been included in the list to date. The family Megalopodidae is represented by 5, Orsodacnidae by 1, and Chrysomelidae by 272 species. The occurrence of 51 other expected species reported from neighboring countries is quite probable in the Kaliningrad Region.

An annotated catalogue of Megalopodidae, Orsodacnidae, and Chrysomelidae of the Kaliningrad Region (Russia)

Family Megalopodidae Latreille, 1802

Subfamily Zeugophorinae Böving et Craighead, 1931

Genus Zeugophora Kunze, 1818

1. *Z. flavicollis* (Marsham, 1802)

Lentz 1879; Bercio and Folwaczny 1979; Alekseev, Bukejs, and Balalaikins 2012.

Chern. [SIE]

2. *Z. frontalis* Suffrian, 1840

Alekseev, Bukejs, and Balalaikins 2012.

Bagr. [SIE]

3. *Z. scutellaris* Suffrian, 1840

Bercio and Folwaczny 1979; Alekseev 2003.

Gur. (Königsberg). [ASE]

4. *Z. subspinosa* (Fabricius, 1781)

Lentz 1879; Bercio and Folwaczny 1979; Alekseev 2003, 2012; Alekseev and Bukejs 2011a.

Chern. (Insterburg); Bagr., Chern., Gur., Gus., Nest., Oz., Pol., Pravd., Zel. [SIE]

5. *Z. turneri* Power, 1863

Bercio and Folwaczny 1979; Alekseev 2003; Bukejs and Alekseev 2009; Alekseev and Bukejs 2011a.

Bagr. (Heiligenbeil), Gur. (Königsberg, Dammteich); Zel. [SIE]

Family Orsodacnidae C. G. Thomson, 1859

Subfamily Orsodacninae C. G. Thomson, 1859

Genus Orsodacne Latreille, 1802

6. *O. cerasi* (Linnaeus, 1758)

Lentz 1879; Bercio and Folwaczny 1979; Alekseev 2003; Alekseev and Bukejs 2011a.

Chern. (Insterburg), Gur. (Königsberg); Bagr., Chern., Gur., Gus., Gvard., Krasn., Nem., Nest., Oz., Pol., Pravd., Slav., Zel. [SIE]

Family Chrysomelidae Latreille, 1802

Subfamily Bruchinae Latreille, 1802

Tribe Amblycerini Bridwell, 1932

Genus Spermophagus Schöenherr, 1833

7. *S. calystegiae* (Lukjanovitsh et Ter-Minassian, 1957)

Alekseev, Bukejs, and Balalaikins 2012.

Bagr., Chern., Gur., Zel. [PAL]

(-) *S. sericeus* (Geoffroy, 1785)

Alekseev 2003 (misidentification), 2005 (misidentification).

Note: Earlier reports of this species from the Kaliningrad Region were based on misidentification; therefore, it is removed from the list of species.

Tribe Bruchini Latreille, 1802

Subtribe Acanthoscelidina Bridwell, 1946

Genus Acanthoscelides Schilsky, 1905

8. *A. obtectus* (Say, 1831)

Alekseev 2002, 2003, 2005.

Chern., Gur., Nem., Slav. [COS]

Genus Bruchidius Schilsky, 1905

9. *B. marginalis* (Fabricius, 1776)

Bercio and Folwaczny 1979; Alekseev and Bukejs 2011b; Alekseev, Bukejs, and Balalaikins 2012.

Nem. (Schillinnen); Zel. [CEU]

(-) *B. lividimanus* (Gyllenhal, 1833)

Alekseev 2002 (misidentification), 2003 (misidentification).

Note: Earlier reports of this species from the Kaliningrad Region were based on misidentification; therefore, it is deleted from the current catalogue.

10. *B. villosus* (Fabricius, 1792)= *ater* (Marsham, 1802)

Aleksiev 2002, 2003; Aleksiev, Bukejs, and Balalaikins 2012.

Bagr., Zel. [CEU]

[*B. unicolor* (A. G. Olivier, 1795)]**Note:** Known in Belarus (Alexandrovitch et al. 1996), Lithuania (Tamutis, Tamute, and Ferenca 2011), and northern Poland (Bercio and Folwaczny 1979; Borowiec, Ścibior, and Kubisz 2011).**Subtribe *Bruchina*** Latreille, 1802**Genus *Bruchus*** Linnaeus, 1767[- *B. affinis* Frölich, 1799]

Aleksiev 2005 (misidentification); Aleksiev and Bukejs 2011a (misidentification).

Note: Earlier reports of this species from the Kaliningrad Region were based on misidentification. Faunal data on this species in the region are absent; therefore, it is removed from the list of species. Its occurrence in local fauna is possible. The species is known in Belarus (Alexandrovitch et al. 1996), Latvia (Bukejs 2010a), Lithuania (Tamutis, Tamute, and Ferenca 2011), and northern Poland (Bercio and Folwaczny 1979; Borowiec, Ścibior, and Kubisz 2011).**11. *B. atomarius*** (Linnaeus, 1760)

Lentz 1879; Bercio and Folwaczny 1979; Aleksiev 2003, 2005; Aleksiev and Bukejs 2011a.

Chern. (Insterburg), Oz. (Trempen), Pravid. (Zehlau); Bagr., Chern., Gur., Gus., Zel. [PAL]

12. *B. loti* Paykull, 1800

Bercio and Folwaczny 1979; Aleksiev 2003, 2005; Aleksiev and Bukejs 2011a.

Bagr. (Schrombehnen), Chern. (Insterburg), Oz. (Trempen); Bagr., Oz., Zel. [SIE]

13. *B. luteicornis* Illiger, 1794

Bercio and Folwaczny 1979; Aleksiev 2003, 2005; Aleksiev and Bukejs 2014.

Gur. (Aweiden); Gur., Zel. [EUM]

14. *B. pisorum* (Linnaeus, 1758)

Aleksiev 2005; Aleksiev, Bukejs, and Balalaikins 2012. Chern., Zel. [COS]

15. *B. rufimanus* Boheman, 1833

Bercio and Folwaczny 1979; Aleksiev 2003, 2005; Aleksiev, Bukejs, and Balalaikins 2012.

Gur. (Königsberg); Chern., Nest. [COS]

Subfamily *Donaciinae* Kirby, 1837**Tribe *Donaciini*** Kirby, 1837**Genus *Donacia*** Fabricius, 1775**16. *D. antiqua*** Kunze, 1818

Bercio and Folwaczny 1979; Aleksiev 2003, 2010.

Gur. (Königsberg), Pravid. (Friedland). [NEU]

17. *D. aquatica* (Linnaeus, 1758)

Bercio and Folwaczny 1979; Aleksiev 2003, 2010.

Chern. (Insterburg), Gur. (Königsberg); Chern., Gur., Krasn., Zel. [SIE]

18. *D. bicolora* Zschach, 1788

Bercio and Folwaczny 1979; Aleksiev 2003, 2010.

Chern. (Insterburg), Gur. (Dammhof). [CAE]

19. *D. brevicornis* Ahrens, 1810

Bercio and Folwaczny 1979; Aleksiev 2003, 2010.

Gur. (Dammhof), Zel. (Neuhäuser, Fr.Nehrung). [WPA]

[*D. brevitarsis* Thomson, 1884]**Note:** Known in Belarus (Lopatin and Nesterova 2005), Latvia (Bukejs 2010b, 2013), Lithuania (Tamutis, Tamute, and Ferenca 2011), and Poland (Borowiec, Ścibior, and Kubisz 2011).**20. *D. cinerea*** (Herbst, 1784)

Bercio and Folwaczny 1979; Aleksiev 2003, 2010.

Gur. (Dammhof); Gur., Zel. [CAE]

21. *D. clavipes* (Fabricius, 1793)

Bercio and Folwaczny 1979; Aleksiev 2003, 2010; Aleksiev and Bukejs 2011a.

Chern. (Insterburg), Gur. (Königsberg), Zel. (Neutief); Zel. [ASE]

22. *D. crassipes* Fabricius, 1775

Bercio and Folwaczny 1979; Aleksiev 2003, 2010.

Gur. (Dammhof), Zel. (Rauschen); Chern., Slav., Zel. [SIE]

23. *D. dentata* Hoppe, 1795

Bercio and Folwaczny 1979; Aleksiev 2003, 2010.

Gur. (Königsberg); Chern., Zel. [SIE]

24. *D. impressa* Paykull, 1799

Bercio and Folwaczny 1979; Aleksiev 2003; Aleksiev and Bukejs 2011a.

Chern. (Insterburg), Gur. (Dammhof), Zel. (Neuhäuser); Bagr., Chern., Zel. [PAL]

25. *D. malinovskiyi* Ahrens, 1810

Bercio and Folwaczny 1979; Aleksiev 2003 (misidentification), 2010.

Gur. (Königsberg), Zel. (Cranz). [CEU]

26. *D. marginata* Hoppe, 1795

Bercio and Folwaczny 1979; Aleksiev 2003, 2010.

Chern. (Insterburg), Gur. (Dammhof). [CEM]

27. *D. obscura* Gyllenhal, 1813

Bercio and Folwaczny 1979; Aleksiev 2003, 2010.

Gur. (Königsberg), Zel. (Fr.Nehrung). [SIE]

28. *D. semicuprea* Panzer, 1796

Bercio and Folwaczny 1979; Aleksiev 2003, 2010; Aleksiev and Bukejs 2011a.

Everywhere; Bagr., Gur., Pol., Zel. [SIE]

29. *D. simplex* Fabricius, 1775

Bercio and Folwaczny 1979; Aleksiev 2003, 2010; Aleksiev and Bukejs 2010b.

Gur. (Königsberg, Dammhof); Bagr., Chern., Gvard., Pravd. [PAL]

[*D. sparganii* Ahrens, 1810]

Note: Known in Belarus (Lopatin and Nesterova 2005), Latvia (Bukejs 2010b, 2013), Lithuania (Tamutis, Tamute, and Ferenca 2011), and northern Poland (Bercio and Folwaczny 1979; Borowiec, Ścibior, and Kubisz 2011).

30. *D. thalassina* Germar, 1811

Bercio and Folwaczny 1979; Alekseev 2003, 2010.
Gur. (Königsberg). [ASE]

31. *D. tomentosa* (Ahrens, 1810)

Bercio and Folwaczny 1979; Alekseev 2003, 2010.
Zel. (Dammteich). [CAE]

32. *D. versicolorea* (Brahm, 1790)

Bercio and Folwaczny 1979; Alekseev 2003, 2010.
Chern. (Insterburg), Gur. (Königsberg). [SIE]

33. *D. vulgaris* Zschach, 1788

Bercio and Folwaczny 1979; Alekseev 2003, 2010.
Chern. (Insterburg), Gur. (Dammhof), Zel. (Forst Fritzen). [ASE]

Tribe Haemoniini S.-H. Chen, 1941

Genus *Macroplea* Samouelle, 1819

= *Haemonia* Dejean, 1821

34. *M. appendiculata* (Panzer, 1794)

Bercio and Folwaczny 1979 (*Haemonia*); Alekseev 2003, 2010.
Zel. (Dammteich). [SIE]

35. *M. mutica* (Fabricius, 1792)

Bercio and Folwaczny 1979 (*Haemonia*); Alekseev 2003, 2010.
Zel. (Rauschen, Dammteich). [PAL]

Tribe Plateumarini Böving, 1922

Genus *Plateumaris* Thomson, 1859

36. *P. (Euplateumaris) discolor* (Panzer, 1795)

Skwarra 1929; Bercio and Folwaczny 1979; Alekseev 2003, 2010; Alekseev and Bukejs 2010b.
Chern. (Insterburg), Pravd. (Zehlau); Gur., Pravd. [EUR]

37. *P. (Euplateumaris) sericea* (Linnaeus, 1761)

Bercio and Folwaczny 1979; Alekseev 2003, 2010.
Pravd. (Zehlau), Zel. (Dammteich); Bagr., Zel. [ASE]

38. *P. (s. str.) braccata* (Scopoli, 1772)

Bercio and Folwaczny 1979; Alekseev 2003, 2010; Alekseev, Bukejs, and Balalaikins 2012.
Gur. (Königsberg), Zel. (Cranz); Zel. [TUE]

39. *P. (s. str.) consimilis* (Schränk, 1781)

Skwarra 1929; Bercio and Folwaczny 1979; Alekseev 2003, 2010.
Chern. (Insterburg), Gur. (Königsberg), Pravd. (Zehlau). [SIE]

40. *P. (s. str.) rustica* (Kunze, 1818)

= *affinis* (Kunze, 1818)

Bercio and Folwaczny 1979 (*affinis* Kunze and *rustica* Kunze); Alekseev 2003, 2010.

Gur. (Königsberg, Neuhausen); Zel., Nest. [WPA]

Subfamily Criocerinae Latreille, 1804

Tribe Criocerini Latreille, 1807

Genus *Crioceris* Geoffroy, 1762

41. *C. asparagi* (Linnaeus, 1758)

Bercio and Folwaczny 1979; Alekseev 2003.
Gur. (Königsberg). [CEM]

42. *C. duodecimpunctata* (Linnaeus, 1758)

Alekseev 2002, 2003.
Bagr., Gur., Pravd., Zel. [ASE]

43. *C. quatuordecimpunctata* (Scopoli, 1763)

Bercio and Folwaczny 1979; Alekseev 2003.
Gur. (Königsberg). [ASE]

Note: The occurrence of the species in local fauna needs further confirmation.

Genus *Lilioceris* Reitter, 1913

44. *L. lili* (Scopoli, 1763)

Alekseev 2002, 2003; Alekseev and Bukejs 2011a.
Chern., Gur., Zel. [PAL]

45. *L. merdigera* (Linnaeus, 1758)

Bercio and Folwaczny 1979; Alekseev 2003.
Without localities; Bagr., Chern., Gur., Zel. [ASE]

Tribe Lemini Gyllenhal, 1813

Genus *Lema* Fabricius, 1798

46. *L. cyanella* (Linnaeus, 1758)

= *puncticollis* Curtis, 1830
Skwarra 1929; Bercio and Folwaczny 1979; Alekseev 2003; Alekseev and Bukejs 2011a.
Gur. (Königsberg); Bagr., Chern., Gur., Gvard., Krasn., Nest., Pol., Pravd., Zel. [ASE]

Genus *Oulema* Des Gozis, 1886

47. *O. duftschmidi* (Redtenbacher, 1874)

Bukejs and Alekseev 2009; Alekseev and Bukejs 2010a, 2011b.
Bagr., Zel. [PAL]

48. *O. erichsonii* Suffrian, 1841

Bercio and Folwaczny 1979; Alekseev 2003 (misidentification).
Gur. (Dammhof). [SIE]

Note: The occurrence of the species in local fauna needs further confirmation.

49. *O. gallaeciana* Heyden, 1870

= *cyanella* Paykull, 1798
= *lichenis* (Voet, 1806)
Bercio and Folwaczny 1979; Alekseev 2003; Alekseev and Bukejs 2011a.
Everywhere; Bagr., Chern., Gur., Gvard., Krasn., Nest., Pol., Pravd., Zel. [SIE]

50. *O. melanopus* (Linnaeus, 1758)= *melanopa* (Linnaeus, 1761)

Skwarra 1929; Bercio and Folwaczny 1979; Alekseev 2003; Alekseev and Bukejs 2010a, 2011a.

Chern. (Insterburg), Nest. (Rominten), Pravid. (Zehlau), Zel. (Neukuhren); Bagr., Chern., Gur., Gus., Gvard., Krasn., Nem., Nest., Oz., Pol., Pravid., Slav., Zel. [OLA]

[*O. septentrionis* Weise, 1880]**Note:** Known in Estonia (Bukejs 2012a), Latvia (Bukejs 2013), Lithuania (Bukejs, Ferenca, and Tamutis 2011), and northern Poland (Bercio and Folwaczny 1979; Borowiec, Ścibior, and Kubisz 2011).[*O. tristis* (Herbst, 1786)]**Note:** Known in Lithuania (Tamutis, Tamute, and Ferenca 2011) and Poland (Bercio and Folwaczny 1979; Borowiec, Ścibior, and Kubisz 2011).**Subfamily Cassidinae** Gyllenhal, 1813**Tribe Hispini** Gyllenhal, 1813**Genus *Hispa*** Linnaeus, 1767= *Hispella* Chapuis, 1875**51. *H. atra*** Linnaeus, 1767Bercio and Folwaczny 1979 (*Hispella*); Alekseev 2003 (*Hispella*); Alekseev and Nikitsky 2008; Alekseev and Bukejs 2010a, 2014.

Zel. (Georgenswalde, Warnicken); Bagr., Gur., Zel. [CAE]

Tribe Cassidini Gyllenhal, 1813**Genus *Cassida*** Linnaeus, 1758**52. *C. denticollis*** Suffrian, 1844

Bercio and Folwaczny 1979; Alekseev 2003.

Chern. (Insterburg), Gur. (Königsberg), Zel. (Cranz); Chern., Gur., Zel. [SIE]

53. *C. ferruginea* Goeze, 1777

Bercio and Folwaczny 1979.

Bagr. (Schrombehnen), Gvard. (Löwenhagen). [CEM]

54. *C. flaveola* Thunberg, 1794

Bercio and Folwaczny 1979; Alekseev 2003; Alekseev and Bukejs 2011a, 2011b.

Chern. (Insterburg), Gur. (Königsberg), Zel. (Palmnicken, Neutief); Bagr., Zel. [OLA]

55. *C. hemisphaerica* Herbst, 1799

Bercio and Folwaczny 1979; Alekseev 2003.

Bagr. (Zinten). [WPA]

[*C. lineola* Creutzer, 1799]**Note:** Known in Belarus (Lopatin and Nesterova 2005), Latvia (Bukejs 2013), Poland (Borowiec, Ścibior, and Kubisz 2011).**56. *C. margaritacea*** Schaller, 1783

Alekseev and Bukejs 2011b.

Zel. [WPA]

57. *C. murraea* Linnaeus, 1767

Bercio and Folwaczny 1979; Alekseev 2003.

Chern. (Insterburg), Gur. (Königsberg), Zel. (Rauschen); Chern. [ASE]

58. *C. nebulosa* Linnaeus, 1758

Skwarra 1929; Bercio and Folwaczny 1979; Alekseev 2003; Alekseev and Bukejs 2011a.

Everywhere; Bagr., Zel. [ASE]

59. *C. nobilis* Linnaeus, 1758

Bercio and Folwaczny 1979; Alekseev 2003; Alekseev and Bukejs 2011a.

Chern. (Insterburg), Gur. (Königsberg), Zel. (Cranz, Neukuhren, Palmnicken); Bagr., Zel. [PAL]

[*C. pannonica* Suffrian, 1844]**Note:** Known in Belarus (Lopatin and Nesterova 2005; Lithuania (Tamutis, Tamute, and Ferenca 2011), and Poland (Borowiec, Ścibior, and Kubisz 2011).**60. *C. panzeri*** Weise, 1907

Alekseev and Bukejs 2010a.

Bagr. [SIE]

61. *C. prasina* Illiger, 1798

Alekseev 2002.

Chern., Gur., Zel. [ASE]

62. *C. rubiginosa* O. F. Müller, 1776

Bercio and Folwaczny 1979; Alekseev 2003.

Chern. (Insterburg), Gur. (Königsberg), Zel. (Palmnicken); Chern., Gur., Pravid. [PAL]

63. *C. sanguinolenta* O. F. Müller, 1776

Bercio and Folwaczny 1979; Alekseev 2003.

Gur. (Königsberg, Quednau). [PAL]

64. *C. sanguinosa* Suffrian, 1844

Bercio and Folwaczny 1979; Alekseev 2003.

Gur. (Königsberg), Pravid. (Zehlau), Zel. (Palmnicken). [PAL]

65. *C. seladonia* Gyllenhal, 1827

Bercio and Folwaczny 1979; Alekseev 2003.

Gur. (Königsberg); Bagr., Zel. [EUM]

66. *C. stigmatica* Suffrian, 1844

Skwarra 1929; Bercio and Folwaczny 1979; Alekseev 2003.

Gur. (Dammhof, Quednau, Königsberg), Zel. (Rauschen); Chern. [PAL]

67. *C. vibex* Linnaeus, 1767

Bercio and Folwaczny 1979; Alekseev 2003; Alekseev and Bukejs 2011a.

Chern. (Insterburg), Gur. (Königsberg), Zel. (Fritzener Forst); Bagr., Chern., Gur., Gvard., Pol., Pravid., Zel. [ASE]

68. *C. viridis* Linnaeus, 1758

Bercio and Folwaczny 1979; Alekseev 2003.

Chern. (Insterburg), Gur. (Königsberg); Zel. [PAL]

69. *C. vittata* Villers, 1789

Bercio and Folwaczny 1979; Alekseev 2003.

Chern. (Insterburg); Zel. [PAL]

Genus *Hypocassida* Weise, 1893

70. *H. subferruginea* (Schrank, 1776)

Bercio and Folwaczny 1979; Alekseev 2003; Alekseev and Bukejs 2011a.

Chern. (Insterburg), Gur. (Königsberg); Bagr., Krasn., Oz., Zel. [PAL]

Genus *Pilemostoma* Desbrochers des Loges, 1891

[*P. fastuosum* (Schaller, 1783)]

Note: Known in Belarus (Lopatin and Nesterova 2005), Latvia (Bukejs 2013), and Poland (Bercio and Folwaczny 1979; Borowiec, Ścibior, and Kubisz 2011).

Subfamily Chrysomelinae Latreille, 1802

Tribe Chrysomelini Latreille, 1802

Subtribe Chrysomelina Latreille, 1802

Genus *Chrysomela* Linnaeus, 1758

= *Lina* Latreille, 1829

= *Melasoma* Stephens, 1831

71. *Ch. collaris* Linnaeus, 1758

Bercio and Folwaczny 1979 (*Melasoma*); Alekseev 2003.

Nest. (Rominten). [ASE]

72. *Ch. cuprea* Fabricius, 1775

Bercio and Folwaczny 1979 (*Melasoma*); Alekseev 2002 (misidentification), 2003 (misidentification).

Gur. (Dammhof). [ASE]

73. *Ch. lapponica* Linnaeus, 1758

Bercio and Folwaczny 1979 (*Melasoma*); Alekseev 2003.

Bagr. (Heiligenbeil), Chern. (Insterburg), Zel. (Neuhäuser, Königsberg) [ASE]

74. *Ch. populi* Linnaeus, 1758

Bercio and Folwaczny 1979 (*Melasoma*); Alekseev 2003, 2012; Alekseev and Bukejs 2010b, 2011a.

Everywhere; Bagr., Chern., Gur., Gvard., Krasn., Pravd., Slav., Zel. [ASE]

75. *Ch. saliceti* (Weise, 1884)

Alekseev 2003, 2012; Alekseev and Bukejs 2011a.

Chern., Gur., Zel. [ASE]

76. *Ch. tremula* Fabricius, 1787

Bercio and Folwaczny 1979 (*Melasoma*); Alekseev 2003.

Bagr. (Schrombehnen), Gur. (Wernsdorf), Nest. (Rominten); Chern., Gur., Krasn., Zel. [ASE]

77. *Ch. vigintipunctata* (Scopoli, 1763)

Bercio and Folwaczny 1979 (*Melasoma*); Alekseev 2003.

Bagr. (Heiligenbeil); Chern., Zel. [ASE]

Genus *Plagioderia* Chevrolat, 1836

78. *P. versicolora* (Laicharting, 1781)

Bercio and Folwaczny 1979; Alekseev 2003.

Chern. (Insterburg), Gur. (Königsberg); Chern., Krasn., Zel. [OLA]

Genus *Plagiosterna* Motschulsky, 1860

= *Linaeidea* Motschulsky, 1860

= *Melasoma* Stephens, 1831 partim

79. *P. aenea* (Linnaeus, 1758)

Skwarra 1929 (*Melasoma*); Bercio and Folwaczny 1979 (*Melasoma*); Alekseev 2003 (*Linaeidea*), 2012 (*Linaeidea*); Alekseev and Bukejs 2010b (*Linaeidea*), 2011a (*Linaeidea*).

Everywhere; Bagr., Chern., Gur., Krasn., Nem., Nest., Pol., Pravd., Zel. [ASE]

Subtribe *Gastrophysina* Kippenberg, 2010

Genus *Gastrophysa* Chevrolat, 1836

= *Gastroidea* Hope, 1840

80. *G. polygoni* (Linnaeus, 1758)

Bercio and Folwaczny 1979 (*Gastroidea*); Alekseev 2003; Alekseev and Bukejs 2011a.

Everywhere; Bagr., Chern., Krasn., Zel. [OLA]

81. *G. viridula* (DeGeer, 1775)

Bercio and Folwaczny 1979 (*Gastroidea*); Alekseev 2003; Alekseev and Bukejs 2011a.

Everywhere; Bagr., Chern., Gur., Gvard., Gus., Krasn., Nem., Pol., Nest., Oz., Pravd., Slav., Zel. [OLA]

Subtribe *Phratorina* Motschulsky, 1860

Genus *Phratora* Chevrolat, 1836

= *Phyllodecta* Kirby, 1837

82. *Ph. (s. str.) vulgatissima* (Linnaeus, 1758)

Bercio and Folwaczny 1979 (*Phyllodecta*); Alekseev 2003.

Gur. (Königsberg), Chern. (Insterburg), Oz. (Trempen); Chern., Gur., Gvard., Zel. [OLA]

83. *Ph. (Phyllodecta) atrovirens* (Cornelius, 1857)

Bercio and Folwaczny 1979 (*Phyllodecta*); Alekseev 2003, 2012; Alekseev and Bukejs 2010b.

Chern. (Insterburg), Gur. (Dammhof), Gvard. (Löwenhagen), Nest. (Rominten); Bagr., Chern., Gvard., Krasn., Pravd., Zel. [SIE]

84. *Ph. (Phyllodecta) laticollis* (Suffrian, 1851)

Bercio and Folwaczny 1979 (*Phyllodecta*); Alekseev 2003, 2012; Alekseev and Bukejs 2011a.

Zel. (Pillau, Bündken); Zel. [ASE]

85. *Ph. (Phyllodecta) tibialis* (Suffrian, 1851)

Bercio and Folwaczny 1979 (*Phyllodecta*); Alekseev 2003.

Bagr. (Silberberge), Chern. (Insterburg), Gur. (Königsberg), Zel. (Loppöhen, Bündken); Chern. [TUE]

86. *Ph. (Phyllodecta) vitellinae* (Linnaeus, 1758)

Bercio and Folwaczny 1979 (*Phyllodecta*); Alekseev 2003, 2012; Alekseev and Bukejs 2011a.

Everywhere; Gur., Zel. [OLA]

Subtribe *Prascurina* Reitter, 1913

Genus *Phaedon* Latreille, 1829**87. *Ph. armoraciae*** (Linnaeus, 1758)

Bercio and Folwaczny 1979; Alekseev 2003, 2010; Alekseev and Bukejs 2011a.

Chern. (Insterburg), Oz. (Trempen), Zel. (Palmnicken, Dammteich); Bagr., Chern., Gur., Gvard., Pravd., Zel. [OLA]

88. *Ph. cochleariae* (Fabricius, 1792)

Bercio and Folwaczny 1979; Alekseev 2003, 2010; Alekseev and Bukejs 2011a.

Chern. (Insterburg), Oz. (Trempen), Zel. (Rositten, Palmnicken, Dammteich); Chern., Gur., Krasn., Zel. [ASE]

[- *Ph. laevigatus* (Duftschmid, 1825)]

Alekseev and Bukejs 2011a (misidentification).

Note: Earlier report of this species from the Kaliningrad Region was based on misidentification. Faunal data on this species in the region are absent; therefore, it is removed from the list of species. Its occurrence in local fauna is possible. The species is known in Belarus (Lopatin and Nesterova 2005), Estonia (Silfverberg 2010), Lithuania (Tamutis, Tamute, and Ferenc 2011), and Poland (Borowiec, Ścibior, and Kubisz 2011).

Genus *Neophaedon* Jacobson, 1901**89. *N. pyritosus*** (Rossi, 1792)

Bercio and Folwaczny 1979 (*Phaedon*).

Gur. (Königsberg). [CAE]

Note: The occurrence of the species in local fauna needs further confirmation. The nearest localities of this species are in Belarus (Lopatin and Nesterova 2005), Poland (Borowiec, Ścibior, and Kubisz 2011), and Ukraine (Kippenberg 2010).

Genus *Prasocuris* Latreille, 1802**90. *P. (Hydrothassa) glabra*** (Herbst, 1783)

Bercio and Folwaczny 1979; Alekseev 2003, 2010.

Chern. (Insterburg), Gur. (Königsberg), Nest. (Rominten). [WPA]

91. *P. (Hydrothassa) hannoveriana* (Fabricius, 1775)

Skwarra 1929; Bercio and Folwaczny 1979; Alekseev 2003, 2010.

Gur. (Königsberg), Pravd.(Zehlau), Zel. (Rauschen, Palmnicken). [SIE]

92. *P. (Hydrothassa) marginella* (Linnaeus, 1758)

Bercio and Folwaczny 1979; Alekseev 2003, 2010; Alekseev and Bukejs 2010a, 2011a.

Chern. (Insterburg), Gur. (Königsberg), Oz. (Trempen), Zel. (Palmnicken); Zel. [SIE]

93. *P. (s. str.) junci* (Brahm, 1790)

Bercio and Folwaczny 1979; Alekseev 2003, 2010; Bukejs and Alekseev 2009; Alekseev and Bukejs 2010a.

Gur. (Königsberg), Nest. (Rominten), Zel. (Rauschen); Bagr., Zel. [WPA]

94. *P. (s. str.) phellandrii* (Linnaeus, 1758)

Bercio and Folwaczny 1979; Alekseev 2003, 2010; Alekseev and Bukejs 2010a, 2011a.

Chern. (Insterburg), Gur. (Dammhof), Zel. (Palmnicken, Neukuhren); Bagr., Chern., Slav., Zel. [OLA]

Tribe *Doryphorini* Motschulsky, 1860**Subtribe *Chrysolinina*** S.-H. Chen, 1936**Genus *Chrysolina*** Motschulsky, 1860

= *Chrysomela* auct. nec Linnaeus, 1758

95. *Ch. (Chalcoidea) analis* (Linnaeus, 1767)

Bercio and Folwaczny 1979; Alekseev 2003.

Zel. (Rauschen). [EUM]

96. *Ch. (Chalcoidea) carnifex* (Fabricius, 1792)

Bercio and Folwaczny 1979; Alekseev 2003; Alekseev and Bukejs 2011a.

Zel. (Rauschen) [TUE]

97. *Ch. (Chalcoidea) marginata* (Linnaeus, 1758)

Alekseev 2002, 2003; Alekseev and Bukejs 2011a.

Zel. [OLA]

98. *Ch. (s. str.) staphylaea* (Linnaeus, 1758)

Bercio and Folwaczny 1979; Alekseev 2003.

Chern. (Insterburg), Gur. (Königsberg), Nest. (Rominten); Bagr., Chern., Gur., Gvard., Krasn., Nest., Zel. [OLA]

99. *Ch. (Chrysomorpha) cerealis* (Linnaeus, 1767)

Bercio and Folwaczny 1979; Alekseev 2003.

Chern. (Insterburg), Zel. (Pillau). [SIE]

100. *Ch. (Colaphodes) haemoptera* (Linnaeus, 1758)

Bercio and Folwaczny 1979; Alekseev 2003; Alekseev and Bukejs 2011a.

Chern. (Insterburg), Zel. (Rauschen). [CAE]

101. *Ch. (Colaphosoma) sturmi* (Westhoff, 1882)

= *diversipes* Bedel, 1892

= *goettingensis* Linnaeus, 1761 nec Linnaeus, 1758

= *violacea* Weise, 1916 nec Müller, 1776

Bercio and Folwaczny 1979 (*violacea* Muell.); Alekseev 2003; Alekseev and Bukejs 2011a.

Chern. (Insterburg), Gur. (Königsberg); Bagr., Chern., Gur., Krasn., Nest., Slav., Zel. [SIE]

102. *Ch. (Erythrochrysa) polita* (Linnaeus, 1758)

Bercio and Folwaczny 1979; Alekseev 2003; Alekseev and Bukejs 2011a.

Everywhere; Bagr., Chern., Gur., Gvard., Krasn., Nem., Nest., Oz., Pol., Pravd., Slav., Zel. [ASE]

103. *Ch. (Euchrysolina) graminis* (Linnaeus, 1758)

Bercio and Folwaczny 1979; Alekseev 2003.

Gur. (Königsberg), Zel. (Warnicken); Gur., Gvard., Krasn., Pravd., Zel. [ASE]

104. *Ch. (Fastuolina) fastuosa* (Scopoli, 1763)

Bercio and Folwaczny 1979; Alekseev 2003; Alekseev and Bukejs 2011a.

Everywhere; Bagr., Chern., Gur., Gvard., Krasn., Nem., Nest., Oz., Pravd., Slav., Zel. [SIE]

105. Ch. (*Hypericia*) *geminata* (Paykull, 1799)

Bercio and Folwaczny 1979; Alekseev 2003; Alekseev and Bukejs 2011b.

Zel. (Warnicken); Chern., Zel. [EUR]

106. Ch. (*Hypericia*) *hyperici* (Forster, 1771)

Alekseev 2003.

Zel. [CEM]

107. Ch. (*Sphaeromela*) *varians* (Schaller, 1783)

Bercio and Folwaczny 1979; Alekseev 2003; Alekseev and Bukejs 2011a.

Everywhere; Bagr., Chern., Gur., Gvard., Krasn., Nem., Nest., Oz., Pravd., Zel. [PAL]

[Ch. (*Stichoptera*) *gypsophilae* (Küster, 1845)]

Note: Known in Belarus (Lopatin and Nesterova 2005), Estonia (Silfverberg 2010), Latvia (Bukejs and Telnov 2010; Bukejs 2013), Lithuania (Tamutis, Tamute, and Ferenca 2011), and northern Poland (Bercio and Folwaczny 1979; Borowiec, Ścibior, and Kubisz 2011).

108. Ch. (*Stichoptera*) *kuesteri* (Helliesen, 1912)

Bercio and Folwaczny 1979; Alekseev 2003.

Zel. (Rauschen). [CEU]

109. Ch. (*Stichoptera*) *sanguinolenta* (Linnaeus, 1758)

Bercio and Folwaczny 1979; Alekseev 2003.

Chern. (Insterburg), Gur. (Königsberg), Zel. (Neuhäuser); Bagr., Chern., Gur., Nest., Zel. [PAL]

110. Ch. (*Sulcicollis*) *oricalcia* (O. F. Müller, 1776)

Bercio and Folwaczny 1979; Alekseev 2003; Alekseev and Bukejs 2010a, 2011a.

Zel. (Warnicken); Zel. [SIE]

[Ch. (*Synerga*) *coerulans* (Scriba, 1791)]

Note: Known in Belarus (Lopatin and Nesterova 2005), Estonia (Silfverberg 2010), Latvia (Bukejs 2013), and Poland (Borowiec, Ścibior, and Kubisz 2011).

111. Ch. (*Synerga*) *herbacea* (Duftschmid, 1825)= *methastri* Suffrian, 1851

Alekseev, Bukejs, and Balalaikins 2012.

Chern., Slav. [CAE]

112. Ch. (*Zeugotaenia*) *limbata* (Fabricius, 1775)

Bercio and Folwaczny 1979; Alekseev 2003.

Nest. (Rominten), Zel. (Rauschen); Nest. [SIE]

Subtribe Doryphorina Motschulsky, 1860**Genus *Leptinotarsa*** Chevrolat, 1836**113. *L. decemlineata*** (Say, 1824)

Alekseev 2002, 2003; Alekseev and Bukejs 2011a.

Bagr., Chern., Gur., Gvard., Gus., Krasn., Nem., Nest., Oz., Pol., Pravd., Slav., Zel. [OLA]

Tribe Entomoscelini Reitter, 1913**Genus *Colaphellus*** Weise, 1916= *Colaphus* L. Redtenbacher, 1845**114. *C. sophiae*** (Schaller, 1783)Bercio and Folwaczny 1979; Alekseev 2003; Bukejs and Alekseev 2009 (*Colaphus*); Alekseev and Bukejs 2011a.

Chern. (Insterburg), Gur. (Königsberg); Zel. [CAE]

Tribe Goniocetenini Motschulsky, 1860**Genus *Gonioctena*** Chevrolat, 1836= *Phytodecta* Kirby, 1837**115. *G. (Goniomena) intermedia*** (Helliesen, 1913)

Alekseev and Bukejs 2010a.

Zel. [EUR]

116. *G. (Goniomena) pallida* (Linnaeus, 1758)Bercio and Folwaczny 1979 (*Phytodecta pallidus*); Alekseev 2003; Alekseev and Bukejs 2010a.

Gvard. (Wehlau); Bagr. [SIE]

117. *G. (Goniomena) quinquepunctata* (Fabricius, 1787)

Alekseev 2002, 2003 (misidentification); Alekseev and Bukejs 2014.

Bagr. [SIE]

118. *G. (s. str.) decemnotata* (Marsham, 1802)= *rufipes* DeGeer, 1775Bercio and Folwaczny 1979 (*Phytodecta rufipes* F.); Alekseev 2003.

Zel. (Dammteich); Bagr., Chern., Gur., Nem., Nest., Zel. [OLA]

119. *G. (s. str.) linnaeana* (Schrank, 1781)Bercio and Folwaczny 1979 (*Phytodecta linnaeanus*); Alekseev 2003, 2012; Alekseev and Bukejs 2011a.

Chern. (Insterburg); Zel. [SIE]

120. *G. (s. str.) viminalis* (Linnaeus, 1758)Bercio and Folwaczny 1979 (*Phytodecta*); Alekseev 2003, 2012; Alekseev and Bukejs 2011a.

Chern. (Insterburg), Gur. (Königsberg); Bagr., Chern., Gur., Krasn., Zel. [ASE]

[*G. (Spartophila) olivacea* (Forster, 1771)]

Note: Known in Belarus (Lopatin and Nesterova 2005) and northern Poland (Bercio and Folwaczny 1979; Borowiec, Ścibior, and Kubisz 2011).

Subfamily Galerucinae Latreille, 1802**Tribe Galerucini** Latreille, 1802**Genus *Galeruca*** Geoffroy, 1762= *Adimonia* Laicharting, 1781**121. *G. (s. str.) interrupta*** (Illiger, 1802)

Bercio and Folwaczny 1979; Alekseev 2003.

Zel. (Neukuhren, Loppöhnen). [CEM]

[*G. (s. str.) laticollis* R. F. Sahlberg, 1838]

Note: Known in Belarus (Lopatin and Nesterova 2005), Estonia (Silfverberg 2010), Latvia (Bukejs 2013), Lithuania (Tamutis, Tamute, and Ferenca 2011), and Poland (Bercio and Folwaczny 1979; Borowiec, Ścibior, and Kubisz 2011).

[*G. (s. str.) pomonae* (Scopoli, 1763)]

Note: Known in Belarus (Lopatin and Nesterova 2005), Estonia (Silfverberg 2010), Latvia (Bukejs 2013),

Lithuania (Tamutis, Tamute, and Ferenca 2011), and Poland (Bercio and Folwaczny 1979; Borowiec, Ścibior, and Kubisz 2011).

122. *G. (s. str.) tanacetii* (Linnaeus, 1758)
Bercio and Folwaczny 1979; Alekseev 2003; Alekseev and Bukejs 2011a.

Nest. (Rominten); Bagr., Chern., Gur., Gvard., Gus., Krasn., Nem., Nest., Oz., Pol., Pravd., Slav., Zel. [PAL]

123. *G. (Haptoscelis) melanocephala* Ponza, 1805

Bercio and Folwaczny 1979; Alekseev 2003.

Gur. (Königsberg), Gvard. (Wehlau). [CEU]

Genus *Galerucella* Crotch, 1873

124. *G. (s. str.) grisescens* (Joannis, 1865)

Bercio and Folwaczny 1979; Alekseev 2003.

Chern. (Insterburg), Gur. (Königsberg), Zel. (Forst Fritzen); Bagr., Zel. [ASE]

125. *G. (s. str.) nymphaeae* (Linnaeus, 1758)

= *aquatica* Geoffroy, 1785

= *sagittariae* Gyllenhal, 1813

Bercio and Folwaczny 1979 (*sagittariae* Gyll.); Alekseev 2003 (*nymphaeae* L.), 2010 (*aquatica* Gyll. and *nymphaeae* L.); Alekseev and Bukejs 2011a (*nymphaeae* L.).

Zel. (Rauschen, Forst Fritzen); Bagr., Chern., Gur., Gus., Nem., Nest., Pol., Slav., Zel. [SIE]

126. *G. (Neogalerucella) calvariensis* (Linnaeus, 1767)

Bercio and Folwaczny 1979; Alekseev 2003, 2010; Alekseev and Bukejs 2011a.

Chern. (Insterburg), Gur. (Königsberg), Zel. (Palmnicken, Neukuhren); Bagr., Chern., Gur., Gvard., Zel. [PAL]

127. *G. (Neogalerucella) lineola* (Fabricius, 1781)

Skwarra 1929; Bercio and Folwaczny 1979; Alekseev 2003.

Chern. (Insterburg), Gur. (Königsberg), Pravd. (Zehlau), Zel. (Palmnicken, Rossitten, Neutief); Gur., Zel. [PAL]

128. *G. (Neogalerucella) pusilla* (Duftschmid, 1825)

Bercio and Folwaczny 1979 (*pussilus* Dft.); Alekseev 2003, 2010.

Without localities; Chern., Zel. [CAE]

129. *G. (Neogalerucella) tenella* (Linnaeus, 1760)

Bercio and Folwaczny 1979; Alekseev 2003; Alekseev and Bukejs 2011a.

Chern. (Insterburg), Gur. (Königsberg), Nest. (Rominten), Zel. (Palmnicken); Bagr., Chern., Gur., Gvard., Pravd., Zel. [SIE]

Genus *Lochmaea* Weise, 1883

130. *L. caprea* (Linnaeus, 1758)

Skwarra 1929; Bercio and Folwaczny 1979; Alekseev 2003, 2012; Alekseev and Bukejs 2010b, 2011a.

Chern. (Insterburg), Pravd. (Zehlau); Bagr., Chern., Gur., Gvard., Gus., Krasn., Nem., Nest., Oz., Pol., Pravd., Slav., Zel. [ASE]

131. *L. crataegi* (Forster, 1771)

Bercio and Folwaczny 1979; Alekseev 2002, 2003.

Without localities; Zel. [PAL]

132. *L. suturalis* (Thomson, 1866)

Skwarra 1929; Bercio and Folwaczny 1979; Alekseev 2003; Alekseev and Bukejs 2010b.

Chern. (Insterburg), Gur. (Metgethen), Pravd. (Zehlau); Pravd. [EUR]

Genus *Pyrrhalta* Joannis, 1865

133. *P. viburni* (Paykull, 1799)

Bercio and Folwaczny 1979; Alekseev 2003.

Bagr. (Zinten), Chern. (Insterburg); Bagr., Chern. [SIE]

Tribe Hylaspini Chapuis, 1875

Genus *Agelastica* Chevrolat, 1836

134. *A. alni* (Linnaeus, 1758)

Bercio and Folwaczny 1979; Alekseev 2003, 2012; Alekseev and Bukejs 2010b, 2011a.

Everywhere; Bagr., Chern., Gur., Gvard., Gus., Krasn., Nem., Nest., Oz., Pol., Pravd., Slav., Zel. [ASE]

Genus *Sermylassa* Reitter, 1913

135. *S. halensis* (Linnaeus, 1767)

Bercio and Folwaczny 1979; Alekseev 2003; Alekseev and Bukejs 2010a, 2011a, 2011b.

Gur. (Königsberg, Arnau); Bagr., Chern., Gur., Slav., Zel. [CAE]

Tribe Luperini Chapuis, 1875

Subtribe Luperina Chapuis, 1875

Genus *Calomicrus* Dillwyn, 1829

136. *C. pinicola* (Duftschmid, 1825)

Skwarra 1929; Bercio and Folwaczny 1979 (*Luperus*); Alekseev 2003; Alekseev and Bukejs 2010b.

Gvard. (Tapiau), Pravd. (Zehlau); Pravd. [EUR]

Genus *Luperus* Geoffroy, 1762

137. *L. flavipes* (Linnaeus, 1767)

Bercio and Folwaczny 1979; Alekseev 2003.

Bagr. (Heiligenbeil), Chern. (Insterburg); Bagr., Chern. [SIE]

138. *L. longicornis* (Fabricius, 1781)

= *rufipes* Scopoli, 1763

= *rufipes* Gyllenhal, 1813

Bercio and Folwaczny 1979; Alekseev 2003.

Bagr. (Silberberge); Zel. [SIE]

Genus *Phyllobrotica* Chevrolat, 1836

139. *Ph. quadrimaculata* (Linnaeus, 1758)

Bercio and Folwaczny 1979; Alekseev 2003; Alekseev and Bukejs 2011a, 2011b.

Chern. (Insterburg), Zel. (Cranz, Dammteich); Chern., Gur., Zel. [SIE]

Subfamily Alticinae Newman, 1835

Genus *Altica* Geoffroy, 1762

= *Haltica* Müller, 1764

= *Haltica* Koch, 1803

140. *A. aenescens* (Weise, 1888)

Alekseev 2012; Alekseev, Bukejs, and Balalaikins 2012. Chern., Krasn., Pravd., Zel. [EUR]

141. *A. brevicollis* Foudras, 1860

Alekseev and Bukejs 2011b. Chern. [SIE]

142. *A. carinthiacea* (Weise, 1888)

Alekseev and Bukejs 2010b; Alekseev and Bukejs 2011a; Alekseev and Bukejs 2011b. Bagr., Gur., Oz., Pravd., Zel. [CAE]

143. *A. chamaenerii* (H. Lindberg, 1926)

Alekseev and Bukejs 2011b. Gur., Zel. [SIE]

144. *A. engstromi* (Sahlberg, 1893)

Alekseev and Bukejs 2011b. Chern., Pravd. [SIE]

145. *A. impressicollis* (Reiche, 1862)

Alekseev and Bukejs 2011a, 2011b. Zel. [TEM]

146. *A. longicollis* (Allard, 1860)

= *britteni* (Sharp, 1914)

= *sandini* (Kemmer, 1919)

Bercio and Folwaczny 1979 (*Haltica britteni* Shp.); Alekseev 2003; Alekseev and Bukejs 2010b. Pravd. (Zehlau); Bagr., Pravd. [CEU]

147. *A. lythri* Aubé, 1843

Skwarra 1929 (*Haltica*); Bercio and Folwaczny 1979 (*Haltica*); Alekseev 2003; Alekseev and Bukejs 2010b. Chern. (Insterburg), Gur. (Königsberg), Pravd. (Zehlau). [EUR]

148. *A. oleracea* (Linnaeus, 1758)

Skwarra 1929 (*Haltica*); Bercio and Folwaczny 1979 (*Haltica*); Alekseev 2003. Everywhere; Bagr., Krasn., Zel. [ASE]

[- *A. palustris* (Weise, 1888)]

Alekseev 2002 (misidentification), 2003 (misidentification).

Note: Earlier reports of this species from the Kaliningrad Region were based on misidentification. Faunal data on this species in the region are absent; therefore, it is removed from the list of species. Its occurrence in local fauna is possible. The species is known in Belarus (Lopatin and Nesterova 2005), Estonia (Silfverberg 2010), Latvia (Bukejs 2011, 2013), Lithuania (Tamutis, Tamute, and Ferenca 2011), and Poland (Borowiec, Ścibior, and Kubisz 2011).

149. *A. quercetorum quercetorum* Foudras, 1860

Bercio and Folwaczny 1979 (*Haltica quercetorum quercetorum* Foudr.); Alekseev 2003; Alekseev, Bukejs, and Balalaikins 2012.

Chern. (Insterburg), Gur. (Trenker Waldhaus bei Königsberg), Zel. (Dammhof); Bagr. [EUR]

150. *A. tamaricis* Schrank, 1785

Bercio and Folwaczny 1979 (*Haltica*); Alekseev, Bukejs, and Balalaikins 2012. Zel. (Neutief); Bagr., Zel. [ASE]

Genus *Aphthona* Chevrolat, 1836

[*A. abdominalis* (Duftschmid, 1825)]

Note: Known in Belarus (Lopatin and Nesterova 2005), Latvia (Bukejs 2009a, 2013), Lithuania (Tamutis, Tamute, and Ferenca 2011), and Poland (Borowiec, Ścibior, and Kubisz 2011).

[*A. atrocaerulea* (Stephens, 1831)]

Note: Known in Latvia (Bukejs 2009a, 2013), Lithuania (Tamutis, Tamute, and Ferenca 2011), and Poland (Borowiec, Ścibior, and Kubisz 2011).

151. *A. cyparissiae* (Koch, 1803)

Bercio and Folwaczny 1979; Alekseev 2003. Gur. (Königsberg). [OLA]

152. *A. czwalinai* Weise, 1888

Alekseev and Bukejs 2011b. Bagr. [OLA]

153. *A. erichsoni* (Zetterstedt, 1838)

Skwarra 1929; Bercio and Folwaczny 1979; Alekseev 2003, 2010; Alekseev and Bukejs 2010b. Pravd. (Zehlau); Pravd. [SIE]

154. *A. euphorbiae* (Schrank, 1781)

Skwarra 1929; Bercio and Folwaczny 1979; Alekseev 2003; Alekseev, Bukejs, and Balalaikins 2012. Chern. (Insterburg), Gur. (Königsberg), Nest. (Rominten), Pravd. (Zehlau), Zel. (Rossitten); Zel. [WPA]

155. *A. lutescens* (Gyllenhal, 1813)

Bercio and Folwaczny 1979; Alekseev 2003, 2010; Alekseev and Bukejs 2011a. Gur. (Königsberg); Chern., Gur., Zel. [PAL]

156. *A. nonstriata* (Goeze, 1777)

= *coerulea* Geoffroy, 1785

Bercio and Folwaczny 1979; Alekseev 2003, 2010; Alekseev and Bukejs 2010b, 2011a. Chern. (Insterburg), Oz. (Trempen), Zel. (Kurische Nehrung, Cranz); Bagr., Chern., Gur., Gvard., Krasn., Pravd., Zel. [TUE]

[*A. pallida* (Bach, 1856)]

Note: Known in Belarus (Lopatin and Nesterova 2005), Latvia (Bukejs 2009a, 2013), Lithuania (Tamutis, Tamute, and Ferenca 2011), and Poland (Borowiec, Ścibior, and Kubisz 2011).

[*A. pygmaea* (Kutschera, 1861)]

Note: Known in Belarus (Lopatin and Nesterova 2005), Estonia (Silfverberg 2010), Latvia (Bukejs 2009a, 2013), Lithuania (Tamutis, Tamute, and Ferenca 2011), and

Poland (Bercio and Folwaczny 1979; Borowiec, Ścibior, and Kubisz 2011).

[*A. venustula* (Kutschera, 1861)]

Note: Known in Belarus (Lopatin and Nesterova 2005), Estonia (Silfverberg 2010), Latvia (Bukejs 2009a, 2013), Lithuania (Tamutis, Tamute, and Ferenca 2011), and Poland (Bercio and Folwaczny 1979; Borowiec, Ścibior, and Kubisz 2011).

157. *A. violacea* (Koch, 1803)

Bercio and Folwaczny 1979; Alekseev 2003, 2010; Alekseev and Bukejs 2010b.

Gur. (Blaustein bei Königsberg); Pravd. [EUR]

Genus *Batophila* Foudras, 1860

158. *B. rubi* (Paykull, 1799)

Bercio and Folwaczny 1979; Alekseev 2003.

Chern. (Insterburg), Oz. (Trempen); Bagr., Chern., Gur., Gvard., Zel. [EUR]

Genus *Chaetocnema* Stephens, 1831

159. *Ch. (s. str.) aerosa* (Letzner, 1846)

Bercio and Folwaczny 1979; Alekseev 2003.

Gur. (Königsberg), Zel. (Dammteich); Chern. [TUE]

160. *Ch. (s. str.) arida* Foudras, 1860

Bercio and Folwaczny 1979; Alekseev 2003.

Chern. (Insterburg). [EUM]

161. *Ch. (s. str.) aridula* (Gyllenhal, 1827)

Bercio and Folwaczny 1979; Alekseev 2003; Alekseev and Bukejs 2011a, 2011b.

Chern. (Insterburg), Zel. (Neukuhren); Gur., Zel. [PAL]

162. *Ch. (s. str.) compressa* (Letzner, 1847)

Alekseev and Bukejs 2010a, 2010b.

Gur., Pravd. [TUE]

163. *Ch. (s. str.) hortensis* (Geoffroy, 1785)

= *aridella* (Paykull, 1799)

Skwarra 1929; Bercio and Folwaczny 1979; Alekseev 2003.

Everywhere often; Bagr., Zel. [PAL]

164. *Ch. (s. str.) mannerheimi* (Gyllenhal, 1827)

Skwarra 1929; Bercio and Folwaczny 1979; Alekseev 2003; Alekseev and Bukejs 2010b, 2011b.

Pravd. (Zehlau); Chern., Pravd., Zel. [SIE]

165. *Ch. (s. str.) sahlbergi* (Gyllenhal, 1827)

Bercio and Folwaczny 1979; Alekseev 2003.

Gur. (Königsberg, Dammteich). [SIE]

166. *Ch. (s. str.) subcoerulea* (Kutschera, 1864)

Alekseev and Bukejs 2011b.

Gur. [EUR]

167. *Ch. (Tlanoma) concinna* (Marsham, 1802)

Skwarra 1929; Bercio and Folwaczny 1979; Alekseev 2003; Alekseev and Bukejs 2010b, 2011a.

Common; Bagr., Chern., Gur., Gvard., Gus., Krasn., Nem., Nest., Oz., Pol., Pravd., Slav., Zel. [PAL]

[- *Ch. (Tlanoma) picipes* Stephens, 1831]

= *heikertingeri* Ljubitshev, 1963

= *laevicollis* (Thomson, 1866)

Alekseev 2003 (*heikertingeri* Ljubitshev; misidentification).

Note: Earlier report of this species from the Kaliningrad Region was based on misidentification. Faunistic data on this species in the region are absent; therefore, it is removed from the list of species. Its occurrence in local fauna is possible. The species is known in Belarus (Lopatin and Nesterova 2005), Estonia (Silfverberg 2010), Latvia (Bukejs 2013), Lithuania (Tamutis, Tamute, and Ferenca 2011), and Poland (Bercio and Folwaczny 1979; Borowiec, Ścibior, and Kubisz 2011).

[*Ch. (Tlanoma) semicoerulea* (Koch, 1803)]

Note: Known in Belarus (Lopatin and Nesterova 2005), Estonia (Silfverberg 2010), Latvia (Bukejs 2013), Lithuania (Tamutis, Tamute, and Ferenca 2011), and Poland (Bercio and Folwaczny 1979; Borowiec, Ścibior, and Kubisz 2011).

168. *Ch. (Tlanoma) tibialis* (Illiger, 1807)

Alekseev and Bukejs 2011b.

Zel. [CEM]

Genus *Crepidodera* Chevrolat, 1836

= *Chalcoides* Foudras, 1861

169. *C. aurata* (Marsham, 1802)

Bercio and Folwaczny 1979; Alekseev 2003, 2012; Alekseev and Bukejs 2010b, 2011a.

Chern. (Insterburg), Gur. (Königsberg); Bagr., Chern., Gur., Krasn., Pravd., Slav., Zel. [PAL]

170. *C. aurea* (Geoffroy, 1785)

Bercio and Folwaczny 1979; Alekseev 2003, 2012; Alekseev and Bukejs 2010b, 2011a.

Bagr. (Silberberge), Chern. (Insterburg); Bagr., Chern., Gur., Krasn., Pravd., Zel. [ASE]

171. *C. fulvicornis* (Fabricius, 1792)

Bercio and Folwaczny 1979; Alekseev 2003, 2012; Alekseev and Bukejs 2010b, 2011b.

Everywhere; Chern., Gur., Pol., Pravd., Zel. [ASE]

172. *C. nitidula* (Linnaeus, 1758)

Bercio and Folwaczny 1979; Alekseev 2003.

Bagr. (Silberberge), Chern. (Insterburg), Gur. (Königsberg); Bagr. [SIE]

173. *C. plutus* (Latreille, 1804)

Bercio and Folwaczny 1979; Alekseev 2003.

Gur. (Königsberg); Zel. [ASE]

Genus *Derocrepis* Weise, 1886

174. *D. rufipes* (Linnaeus, 1758)

Bercio and Folwaczny 1979; Alekseev 2003.

Gur. (Friedrichstein); Chern. [SIE]

Genus *Dibolia* Latreille, 1829

175. *D. cryptocephala* (Koch, 1803)

Bercio and Folwaczny 1979; Alekseev 2003.
Gur. (Königsberg). [TUE]

176. *D. cynoglossi* (Koch, 1803)
Bercio and Folwaczny 1979; Alekseev 2003.
Zel. (Loppönnen). [CEU]

177. *D. depressiuscula* Letzner, 1846
Bercio and Folwaczny 1979; Alekseev 2003.
Gur. (Königsberg). [CAE]

178. *D. occultans* (Koch, 1803)
Bercio and Folwaczny 1979; Alekseev 2003.
Gur. (Bündken, Königsberg). [TEM]
Note: The occurrence of the species needs confirmation.

179. *D. rugulosa* Redtenbacher, 1849
Lentz 1879; Bercio and Folwaczny 1979.
Gur. (Königsberg). [EUR]
Note: The occurrence of the species needs confirmation.

Genus *Epitrix* Foudras, 1860

180. *E. pubescens* (Koch, 1803)
Bercio and Folwaczny 1979; Alekseev 2003; Alekseev
and Bukejs 2011a.
Chern. (Insterburg), Gur. (Königsberg); Gvard., Zel.
[OLA]

Genus *Hermaphysa* Foudras, 1860

181. *H. mercurialis* (Fabricius, 1792)
Bercio and Folwaczny 1979; Alekseev 2003; Alekseev
and Bukejs 2011b.
Chern. (Insterburg), Zel. (Warnicken); Chern., Zel.
[EUR]

Genus *Hippuriphila* Foudras, 1860

182. *H. modeeri* (Linnaeus, 1761)
Lentz 1879; Bercio and Folwaczny 1979; Alekseev
2003; Alekseev and Bukejs 2011b.
Chern. (Insterburg), Gur. (Königsberg), Oz. (Trempen);
Chern., Gur., Pravd., Zel. [OLA]

Genus *Longitarsus* Latreille, 1829

[***L. (s. str.) aeneicollis*** (Faldermann, 1837)]
= *suturalis* Marsham, 1802
Note: Known in southern Belarus (Lopatin and
Nesterova 2005), Estonia (Silfverberg 2010), Latvia
(Bukejs 2013), Lithuania (Tamutis, Tamute, and Ferenca
2011), and Poland (Bercio and Folwaczny 1979;
Borowiec, Ścibior, and Kubisz 2011).

[***L. (s. str.) apicalis*** (Beck, 1817)]
Note: Known in southern Belarus (Lopatin and
Nesterova 2005), Estonia (Silfverberg 2010), Latvia
(Bukejs 2013), and Poland (Bercio and Folwaczny 1979;
Borowiec, Ścibior, and Kubisz 2011).

183. *L. (s. str.) atricillus* (Linnaeus, 1761)
Bercio and Folwaczny 1979; Alekseev 2003.
Chern. (Insterburg), Pravd. (Zehlau). [PAL]

184. *L. (s. str.) brunneus* (Duftschmid, 1825)
Bercio and Folwaczny 1979; Alekseev 2003.
Chern. (Insterburg), Gur. (Königsberg), Zel. (Loppöh-
nen). [ASE]

185. *L. (s. str.) curtus* (Allard, 1860)
Skwarra 1929; Bercio and Folwaczny 1979; Alekseev
2003.
Chern. (Insterburg), Pravd. (Zehlau). [CEM]

[***L. (s. str.) echii*** Koch, 1803]
Note: The species was mentioned from the former East-
ern Prussia without precise localities (Lentz 1879) and
occurrence of the species needs further confirmation. The
species is known from Lithuania (Tamutis, Tamute, and
Ferenca 2011) and Poland (Borowiec, Ścibior, and
Kubisz 2011).

186. *L. (s. str.) exsoletus* (Linnaeus, 1758)
Bercio and Folwaczny 1979; Alekseev 2003.
Gur. (Königsberg), Zel. (Forst Fritzen); Chern. [CEM]

187. *L. (s. str.) ferrugineus* (Foudras, 1860)
= *waterhousei* Kutschera, 1864
Bercio and Folwaczny 1979 (*waterhousei* Kutsch.).
[EUM]
Chern. (Insterburg).

[***L. (s. str.) ganglbaueri*** Heikertinger, 1912]
Note: Known in southern Belarus (Lopatin and Nester-
ova 2005), Latvia (Bukejs 2013), Lithuania (Tamutis,
Tamute, and Ferenca 2011), and Poland (Bercio and
Folwaczny 1979; Borowiec, Ścibior, and Kubisz 2011).

[***L. (s. str.) gracilis*** Kutschera, 1864]
Skwarra 1929.
Pravd. (Zehlau)
Note: A single record of this species in the Kaliningrad
Region (Skwarra 1929) is doubted by Bercio and
Folwaczny (1979). Its occurrence in local fauna needs
further confirmation. The species is known from Belarus
(Lopatin and Nesterova 2005), Estonia (Silfverberg
2010), Latvia (Bukejs 2013), Lithuania (Tamutis,
Tamute, and Ferenca 2011), and Poland (Borowiec,
Ścibior, and Kubisz 2011).

188. *L. (s. str.) holsaticus* (Linnaeus, 1758)
Bercio and Folwaczny 1979; Alekseev 2003.
Gur. (Königsberg). [ASE]

189. *L. (s. str.) jacobaeae* (Waterhouse, 1858)
Bercio and Folwaczny 1979; Alekseev 2003.
Gur. (Quednau); Chern., Gur. [CEM]

[***L. (s. str.) kutscherae*** (Rye, 1872)]
Note: Known in southern Belarus (Lopatin and
Nesterova 2005), Latvia (Bukejs 2013), Lithuania
(Tamutis, Tamute, and Ferenca 2011), and Poland
(Borowiec, Ścibior, and Kubisz 2011).

(-) ***L. (s. str.) languidus*** (Kutschera, 1860)
Alekseev 2003 (misidentification).

Note: A single report of this species (Alekseev 2003) was based on misidentification; therefore, it is removed from the list of Chrysomelidae of the Kaliningrad Region.

190. *L. (s. str.) lewisii* (Baly, 1874)
Alekseev and Bukejs 2011b.
Chern. [ASE]

[***L. (s. str.) longiseta*** Weise, 1889]

Note: Known in southern Belarus (Lopatin and Nesterova 2005), Estonia (Silfverberg 2010), Latvia (Bukejs 2013), Lithuania (Tamutis, Tamute, and Ferenc 2011), and Poland (Bercio and Folwaczny 1979; Borowiec, Ścibior, and Kubisz 2011).

191. *L. (s. str.) luridus* (Scopoli, 1763)
Skwarra 1929; Bercio and Folwaczny 1979; Alekseev 2003; Alekseev and Bukejs 2011a.
Chern. (Insterburg), Gur. (Wernsdorf), Pravd. (Zehlau), Zel. (Forst Fritzen); Bagr., Chern., Gur., Krasn., Pravd., Zel. [PAL]

192. *L. (s. str.) lycopi* (Foudras, 1860)
Bercio and Folwaczny 1979; Alekseev 2003.
Gur. (Königsberg). [PAL]

193. *L. (s. str.) melanocephalus* (DeGeer, 1775)
Skwarra 1929; Bercio and Folwaczny 1979; Alekseev 2003.
Everywhere; Chern., Gur., Zel. [PAL]

194. *L. (s. str.) nasturtii* (Fabricius, 1792)
Bercio and Folwaczny 1979; Alekseev 2003; Alekseev and Bukejs 2011b.
Gur. (Rosenau), Oz. (Trempen); Bagr., Chern. [ASE]

195. *L. (s. str.) niger* (Koch, 1803)
Skwarra 1929; Bercio and Folwaczny 1979; Alekseev 2003.
Pravd. (Zehlau). [EUR]

[***L. (s. str.) nigerrimus*** (Gyllenhal, 1827)]

Note: Known in southern Belarus (Lopatin and Nesterova 2005), Estonia (Silfverberg 2010), Latvia (Bukejs 2013), Lithuania (Tamutis, Tamute, and Ferenc 2011), and Poland (Bercio and Folwaczny 1979; Borowiec, Ścibior, and Kubisz 2011).

[***L. (s. str.) noricus*** Leonardi, 1976]

Note: Known in southern Belarus (Lopatin and Nesterova 2005), Estonia (Bukejs 2012a), Latvia (Bukejs 2013), Lithuania (Bukejs et al. 2012), and Poland (Borowiec, Ścibior, and Kubisz 2011).

196. *L. (s. str.) parvulus* (Paykull, 1799)
Skwarra 1929; Bercio and Folwaczny 1979; Alekseev 2003; Alekseev and Bukejs 2011a, 2011b.
Gur. (Königsberg), Pravd. (Zehlau), Chern. (Insterburg); Zel. [PAL]

197. *L. (s. str.) pellucidus* (Foudras, 1860)

Skwarra 1929; Bercio and Folwaczny 1979; Alekseev 2003.

Chern. (Insterburg), Pravd. (Zehlau). [CEM]

198. *L. (s. str.) pratensis* (Panzer, 1794)
= *pusillus* (Gyllenhal, 1813)

Skwarra 1929 (*pussilus* Gyll.); Bercio and Folwaczny 1979; Alekseev 2003; Alekseev, Bukejs, and Balalaikins 2012.

Chern. (Insterburg), Gur. (Königsberg), Pravd. (Zehlau); Chern. [CEM]

199. *L. (s. str.) quadriguttatus* (Pontoppidan, 1763)
Bercio and Folwaczny 1979; Alekseev 2003.
Gur. (Königsberg). [EUR]

200. *L. (s. str.) rubiginosus* (Foudras, 1860)
Alekseev, Bukejs, and Balalaikins 2012.
Chern. [SIE]

201. *L. (s. str.) succineus* (Foudras, 1860)
Bercio and Folwaczny 1979; Alekseev 2003; Alekseev and Bukejs 2011b.

Chern. (Insterburg), Gur. (Königsberg), Gvard. (Löwenhagen); Bagr., Chern., Gur., Zel. [PAO]

202. *L. (s. str.) suturellus* (Duftschmid, 1825)
Bercio and Folwaczny 1979; Alekseev 2003; Alekseev and Bukejs 2011b.

Chern. (Insterburg), Gur. (Königsberg), Oz. (Trempen); Bagr., Chern., Gur., Gvard. [ASE]

[***Longitarsus (s. str.) symphyti*** Heikertinger, 1912]

Note: Known in Lithuania (Tamutis, Tamute, and Ferenc 2011) and Poland (Bercio and Folwaczny 1979; Borowiec, Ścibior, and Kubisz 2011).

203. *L. (s. str.) tabidus* (Fabricius, 1775)
Bercio and Folwaczny 1979; Alekseev 2003; Alekseev, Bukejs, and Balalaikins 2012.
Bagr. (Lüdwigsort), Zel. (Rauschen); Bagr., Gur., Zel. [PAL]

204. *L. (Testergus) anchusae* (Paykull, 1799)
Bercio and Folwaczny 1979; Alekseev 2003; Alekseev and Bukejs 2011b.
Zel. (Rauschen); Bagr. [CAE]

Genus *Lythraia* Bedel, 1897

205. *L. salicariae* (Paykull, 1800)
Bercio and Folwaczny 1979; Alekseev 2003, 2010; Alekseev and Bukejs 2010b, 2011a.
Chern. (Insterburg), Gur. (Königsberg), Zel. (Georgenswalde); Bagr., Chern., Gur., Gvard., Krasn., Nem., Nest., Pol., Pravd., Slav., Zel. [ASE]

Genus *Mantura* Stephens, 1831

206. *M. chrysanthemi* (Koch, 1803)
Bercio and Folwaczny 1979; Alekseev 2003 (misidentification); Alekseev and Bukejs 2010b (misidentification).
Zel. (Neuhäser). [EUM]

207. *M. rustica* (Linnaeus, 1767)
Bercio and Folwaczny 1979; Alekseev 2003; Alekseev and Bukejs 2010a, 2011a.

Zel. (Neuhäser); Gur., Zel. [ASE]

Genus *Mniophila* Stephens, 1831

208. *M. muscorum* (Koch, 1803)

Bercio and Folwaczny 1979; Alekseev 2003.

Gur. (Margen, Vierbrüderkrug), Zel. (Forst Fritzen). [CEU]

Genus *Neocrepidodera* Heikertinger, 1911

= *Asiolestia* Jacobson, 1925

= *Crepidodera* auct. nec Chevrolat, 1836

[*N. femorata* (Gyllenhal, 1813)]

Note: The species was mentioned from the former Prussia without precise localities (Bercio and Folwaczny 1979). The occurrence of the species in the region needs further confirmation. It is known in Belarus (Lopatin and Nesterova 2005), Estonia (Silfverberg 2010), Lithuania (Tamutis, Tamute, and Ferenca 2011), and Poland (Borowiec, Ścibior, and Kubisz 2011).

209. *N. ferruginea* (Scopoli, 1763)

Skwarra 1929; Bercio and Folwaczny 1979 (*Crepidodera*); Alekseev 2003; Alekseev and Bukejs 2011a.

Everywhere common; Bagr., Gur., Zel. [PAL]

210. *N. interpunctata* (Motschulsky, 1859)

Alekseev 2002 (*Asiolestia*), 2003 (*Asiolestia*).

Chern. [ASE]

[*N. motschulskii* (Konstantinov, 1991)]

= *sublaevis* auct. nec Motschulsky, 1859

Note: Known in Belarus (Lopatin and Nesterova 2005), Estonia (Silfverberg 2010), Latvia (Bukejs 2009b, 2013), Lithuania (Tamutis, Tamute, and Ferenca 2011), and Poland (Bercio and Folwaczny 1979; Borowiec, Ścibior, and Kubisz 2011).

211. *N. nigritula* (Gyllenhal, 1813)

Skwarra 1929; Bercio and Folwaczny 1979 (*Crepidodera*); Alekseev 2003; Alekseev and Bukejs 2010a, 2011a.

Chern. (Insterburg), Gur. (Königsberg), Pravd. (Zehlau); Bagr., Zel. [EUR]

212. *N. transversa* (Marshall, 1802)

Skwarra 1929; Bercio and Folwaczny 1979 (*Crepidodera*); Alekseev 2003; Alekseev and Bukejs 2011a.

Gur. (Königsberg), Pravd. (Zehlau); Bagr., Chern., Gur., Gus., Gvard., Krasn., Nem., Nest., Oz., Pravd., Zel. [TUE]

Genus *Phyllotreta* Chevrolat, 1836

213. *Ph. armoraciae* (Koch, 1803)

Bercio and Folwaczny 1979; Alekseev 2003.

Gur. (Rosenau, Wernsdorf, Königsberg); Bagr., Chern., Zel. [SIE]

214. *Ph. atra* (Fabricius, 1775)

Skwarra 1929; Bercio and Folwaczny 1979; Alekseev 2003; Alekseev and Bukejs 2011a; Alekseev, Bukejs, and Balalaikins 2012.

Everywhere; Bagr., Chern., Gur., Gus., Gvard., Krasn., Nem., Nest., Oz., Pravd., Zel. [PAL]

215. *Ph. astrachanica* Lopatin, 1977

Alekseev, Bukejs, and Balalaikins 2012.

Bagr., Gur., Zel. [TUE]

[- *Ph. cruciferae* (Goeze, 1777)]

= *obscura* Illiger, 1807

Alekseev 2003 (misidentification).

Note: Earlier report of this species from the Kaliningrad Region was based on misidentification. Faunal data on this species in the region are absent; therefore, it is removed from the list of species. Its occurrence in local fauna is possible. Species is known in Belarus (Lopatin and Nesterova 2005), Latvia (Bukejs 2013), Lithuania (Tamutis, Tamute, and Ferenca 2011), and Poland (Borowiec, Ścibior, and Kubisz 2011).

216. *Ph. dilatata* Thomson, 1866

Bukejs and Alekseev 2009; Alekseev and Bukejs 2011a.

Zel. [SIE]

217. *Ph. exclamatoris* (Thunberg, 1784)

Bercio and Folwaczny 1979; Alekseev 2003, 2010.

Chern. (Insterburg), Gur. (Königsberg), Nest. (Rominten). [SIE]

218. *Ph. flexuosa* (Illiger, 1794)

Bercio and Folwaczny 1979; Alekseev 2003; Alekseev and Bukejs 2011a.

Gur. (Königsberg), Nest. (Rominten), Zel. (Palmnicken); Bagr., Chern., Zel. [SIE]

219. *Ph. nemorum* (Linnaeus, 1758)

Skwarra 1929; Bercio and Folwaczny 1979; Alekseev 2003; Alekseev and Bukejs 2011a.

Everywhere; Chern., Gur., Zel. [ASE]

220. *Ph. nigripes* (Fabricius, 1775)

Skwarra 1929; Bercio and Folwaczny 1979; Alekseev 2003; Alekseev, Bukejs, and Balalaikins 2012.

Chern. (Insterburg), Pravd. (Zehlau); Chern. [CEM]

221. *Ph. ochripes* (Curtis, 1837)

Bercio and Folwaczny 1979; Alekseev 2003, 2010.

Chern. (Insterburg), Gur. (Königsberg); Nem. [ASE]

222. *Ph. striolata* (Fabricius, 1803)

= *vittata* Fabricius, 1801

Bercio and Folwaczny 1979; Alekseev 2003; Alekseev and Bukejs 2010b, 2011a.

Chern. (Insterburg), Gur. (Königsberg); Bagr., Chern., Gur., Krasn., Pravd., Zel. [HOR]

223. *Ph. tetrastigma* (Comolli, 1837)

Bercio and Folwaczny 1979; Alekseev 2003, 2010; Alekseev and Bukejs 2011a, 2011b.

Gur. (Schrombehnen, Bündken, Königsberg); Gvard., Zel. [SIE]

224. *Ph. undulata* Kutschera, 1860
Skwarra 1929; Bercio and Folwaczny 1979; Alekseev 2003; Alekseev and Bukejs 2011a.
Chern. (Insterburg), Gur. (Königsberg), Pravid. (Zehlau), Zel. (Neutief); Zel. [PAL]

225. *Ph. vittula* (Redtenbacher, 1849)
Skwarra 1929; Bercio and Folwaczny 1979; Alekseev 2003; Alekseev and Bukejs 2011a.
Chern. (Insterburg), Gur. (Königsberg), Pravid. (Zehlau), Zel. (Loppöhnen); Bagr., Chern., Gur., Gus., Gvard., Krasn., Nem., Nest., Oz., Pol., Pravid., Slav., Zel. [ASE]

Genus *Psylliodes* Latreille, 1825

226. *P. (s. str.) affinis* (Paykull, 1799)
Bercio and Folwaczny 1979; Alekseev 2003; Alekseev, Bukejs, and Balalaikins 2012.
Chern. (Insterburg), Gur. (Königsberg), Zel. (Palmnicken); Zel. [CEM]

[*P. (s. str.) attenuata* (Koch, 1803)]
Note: Known in Belarus (Lopatin and Nesterova 2005), Latvia (Bukejs 2013), Lithuania (Tamutis, Tamute, and Ferenca 2011; Bukejs et al. 2012), and Poland (Bercio and Folwaczny 1979; Borowiec, Ścibior, and Kubisz 2011).

227. *P. (s. str.) chalcomera* (Illiger, 1807)
Bercio and Folwaczny 1979; Alekseev 2003; Alekseev and Bukejs 2011b.
Gur. (Königsberg); Bagr., Chern., Gur., Zel. [PAL]

228. *P. (s. str.) chrysocephala* (Linnaeus, 1758)
Bercio and Folwaczny 1979; Alekseev 2003.
Chern. (Insterburg), Gur. (Königsberg). [CEM]

229. *P. (s. str.) cucullata* (Illiger, 1807)
Bercio and Folwaczny 1979; Alekseev 2003.
Gur. (Quednau), Zel. (Loppöhnen); Bagr., Chern., Gur., Krasn., Zel. [ASE]

230. *P. (s. str.) cuprea* (Koch, 1803)
Bercio and Folwaczny 1979; Alekseev 2003.
Gur. (Königsberg). [CEM]

231. *P. (s. str.) dulcamarae* (Koch, 1803)
Bercio and Folwaczny 1979; Alekseev 2003.
Chern. (Insterburg), Gur. (Königsberg), Zel. (Rossitten, Cranz); Zel. [CAE]

[*P. (s. str.) hyoscyami* (Linnaeus, 1758)]
Note: Known in Belarus (Lopatin and Nesterova 2005), Latvia (Bukejs 2013), Lithuania (Tamutis, Tamute, and Ferenca 2011), and Poland (Bercio and Folwaczny 1979; Borowiec, Ścibior, and Kubisz 2011).

[*P. (s. str.) luteola* (O. F. Müller, 1776)]
Note: Known in Belarus (Lopatin and Nesterova 2005), Estonia (Silfverberg 2010), Latvia (Bukejs 2013), and

Poland (Bercio and Folwaczny 1979; Borowiec, Ścibior, and Kubisz 2011).

232. *P. (s. str.) marcida* (Illiger, 1807)
Bercio and Folwaczny 1979; Alekseev 2003; Alekseev and Nikitsky 2008; Alekseev and Bukejs 2011a.
Zel. (Pillau, Fr.Nehrung); Bagr., Gur., Zel. [WPA]

233. *P. (s. str.) napi* (Fabricius, 1792)
Bercio and Folwaczny 1979; Alekseev 2003; Alekseev and Bukejs 2011a.
Zel. (Loppöhnen); Bagr., Chern., Gvard., Pravid., Zel. [PAL]

234. *P. (s. str.) picina* (Marsham, 1802)
Bercio and Folwaczny 1979; Alekseev 2003; Alekseev, Bukejs, and Balalaikins 2012.
Gur. (Königsberg), Zel. (Forst Fritzen); Gur. [TUE]

[*P. (s. str.) tricolor* Weise, 1888]
= *sophiae* Heikertinger, 1914
Note: Known in Belarus (Lopatin and Nesterova 2005), Estonia (Silfverberg 2010), Lithuania (Tamutis, Tamute, and Ferenca 2011; Bukejs et al. 2012), and Poland (Bercio and Folwaczny 1979; Borowiec, Ścibior, and Kubisz 2011).

Genus *Sphaeroderma* Stephens, 1831

(-) *S. rubidum* (Graëlls, 1858)
Alekseev 2002 (misidentification); Alekseev 2003 (misidentification).
Note: Earlier reports of this species were based on misidentification; therefore, it is removed from the list of Chrysomelidae s. l. of the Kaliningrad Region.

235. *S. testaceum* (Fabricius, 1775)
Bercio and Folwaczny 1979; Alekseev 2003.
Chern. (Insterburg), Zel. (Loppöhnen, Warnicken); Bagr., Chern., Gur., Zel. [EUR]

Genus *Agropus* Fisher, 1824

[*A. ahrensii* (Germar, 1817)]
Note: Known in Poland (Bercio and Folwaczny 1979) and Belarus (Lopatin and Nesterova 2005), Latvia (Bukejs 2013).

[*A. nigratarsis* (Gebler, 1823)]
Note: Known in Belarus (Lopatin and Nesterova 2005) and Latvia (Bukejs 2008, 2013).

Subfamily *Cryptocephalinae* Gyllenhal, 1813

Tribe *Clytrini* Kirby, 1837

Subtribe *Clytrina* Kirby, 1837

Genus *Clytra* Laicharting, 1781

236. *C. quadripunctata* (Linnaeus, 1758)
Skwarra 1929; Bercio and Folwaczny 1979; Alekseev 2003; Alekseev and Bukejs 2010a; Alekseev, Bukejs, and Balalaikins 2012.
Everywhere; Bagr., Gur., Zel. [ASE]

Genus *Coptocephala* Chevrolat, 1836

237. *C. unifasciata* (Scopoli, 1763)

Bercio and Folwaczny 1979; Alekseev 2003.
Zel. (Neuhäser). [CAE]

Genus *Labidostomis* Germar, 1822

238. *L. longimana* (Linnaeus, 1760)

Bercio and Folwaczny 1979; Alekseev 2003.
Nest. (Rominten), Zel. (Loppöhnen); Bagr., Chern., Gur.,
Zel. [SIE]

239. *L. tridentata* (Linnaeus, 1758)

Bercio and Folwaczny 1979; Alekseev 2003.
Zel. (Rauschen). [SIE]

Genus *Smaragdina* Chevrolat, 1836

= *Gynandrophthalma* Lacordaire, 1848

240. *S. affinis* (Illiger, 1794)

Bercio and Folwaczny 1979 (*Gynandrophthalma*);
Alekseev 2003.
Gur. (Königsberg). [EUR]

241. *S. flavicollis* (Charpentier, 1825)

Bercio and Folwaczny 1979 (*Gynandrophthalma*);
Alekseev 2003.
Gur. (Neuhausen). [EUR]

242. *S. salicina* (Scopoli, 1763)

= *cyanea* (Fabricius, 1775)
Bercio and Folwaczny 1979 (*Gynandrophthalma cyanea*
F.).
Chern. (Insterburg), Gur. (Königsberg). [SIE]

[*S. aurita* (Linnaeus, 1787)]

Note: Known in northern Poland (Bercio and Folwaczny
1979; Borowiec, Ścibior, and Kubisz 2011).

Tribe *Cryptocephalini* Gyllenhal, 1813

Subtribe *Cryptocephalina* Gyllenhal, 1813

Genus *Cryptocephalus* Geoffroy, 1762

243. *C. (Burlinius) bilineatus* (Linnaeus, 1767)

Alekseev and Bukejs 2011b.
Bagr. [ASE]

244. *C. (Burlinius) chrysopus* (Gmelin, 1788)

Bercio and Folwaczny 1979; Alekseev 2003.
Gur. (Königsberg), Zel. (Rauschen). [TUE]

245. *C. (Burlinius) exiguus* Schneider, 1792

Bercio and Folwaczny 1979; Alekseev 2003; Alekseev,
Bukejs, and Balalaikins 2012.
Zel. (Forst Fritzen); Chern. [ASE]

[*C. (Burlinius) frontalis* Marsham, 1802]

Note: Known in Belarus (Lopatin and Nesterova 2005),
Estonia (Silfverberg 2010), Latvia (Bukejs 2013),
Lithuania (Tamutis, Tamute, and Ferenca 2011), and
Poland (Bercio and Folwaczny 1979; Borowiec, Ścibior,
and Kubisz 2011).

246. *C. (Burlinius) fulvus* Goeze, 1777

Bercio and Folwaczny 1979; Alekseev 2003; Alekseev
and Bukejs 2011a.

Everywhere; Bagr., Chern., Gur., Gvard., Krasn., Nest.,
Zel. [ASE]

247. *C. (Burlinius) labiatus* (Linnaeus, 1761)

Skwarra 1929; Bercio and Folwaczny 1979; Alekseev
2003.
Pravd. (Zehlau), Zel. (Rauschen); Gur., Krasn., Slav.,
Zel. [SIE]

[*C. (Burlinius) ochroleucus* Fairmaire, 1859]

Note: Known in Lithuania (Bukejs and Ferenca 2011)
and Poland (Bercio and Folwaczny 1979; Borowiec,
Ścibior, and Kubisz 2011). Occurs on seacoasts.

248. *C. (Burlinius) ocellatus* Drapiez, 1819

Bercio and Folwaczny 1979; Alekseev 2003, 2012;
Alekseev and Bukejs 2011a.
Chern. (Insterburg); Chern., Nem., Zel. [TUE]

[*C. (Burlinius) pallifrons* Gyllenhal, 1813]

Note: Known in Belarus (Lopatin and Nesterova 2005),
Estonia (Silfverberg 2010), Latvia (Bukejs 2013),
Lithuania (Tamutis, Tamute, and Ferenca 2011), and
Poland (Bercio and Folwaczny 1979; Borowiec, Ścibior,
and Kubisz 2011).

249. *C. (Burlinius) punctiger* Paykull, 1799

Bercio and Folwaczny 1979; Alekseev 2003.
Zel. (Loppöhnen, Warnicken). [TUE]

250. *C. (Burlinius) pusillus* Fabricius, 1777

Bercio and Folwaczny 1979; Alekseev 2003.
Chern. (Insterburg), Gur. (Königsberg, Preil bei Königsberg),
Zel. (Loppöhnen); Chern., Gur., Pol., Zel. [WPA]

251. *C. (Burlinius) querceti* Suffrian, 1848

Skwarra 1929; Bercio and Folwaczny 1979; Alekseev
2003; Alekseev, Bukejs, and Balalaikins 2012.
Pravd. (Zehlau); Slav. [CEU]

252. *C. (Burlinius) rufipes* (Goeze, 1777)

Bercio and Folwaczny 1979; Alekseev 2003.
Gur. (Neuhausen), Zel. (Georgenswalde, Dammhof).
[EUM]

253. *C. (Burlinius) saliceti* Zebe, 1855

Skwarra 1929; Bercio and Folwaczny 1979; Alekseev
2003.
Gur. (Juditten), Pravd. (Zehlau), Zel. (Rauschen). [CEU]

254. *C. (s. str.) androgyne* Marseul, 1875

= *coerulescens* Sahlberg, 1839
Bercio and Folwaczny 1979 (*coerulescens* Sahlberg);
Alekseev 2003 (*coerulescens* Sahlberg)
Zel. (Rauschen). [ASE]

[*C. (s. str.) anticus* Suffrian, 1848]

= *octocosmus* Bedel, 1891

= *octoguttatus* Schneider, 1792

Note: Known in Belarus (Lopatin and Nesterova 2005)
and Lithuania (Tamutis, Tamute, and Ferenca 2011).

255. *C. (s. str.) aureolus* Suffrian, 1847

Bercio and Folwaczny 1979; Alekseev 2003.

Chern. (Insterburg), Nest. (Rominten), Zel. (Warnicken). [SIE]

[*C. (s. str.) bameuli* Duhaldeborde, 1999]

Note: Known in Belarus (Lopatin and Nesterova 2005), Estonia (Bukejs 2012a), and Poland (Borowiec, Ścibior, and Kubisz 2011).

[*C. (s. str.) biguttatus* (Scopoli, 1763)]

Note: Known in Belarus (Lopatin and Nesterova 2005), Estonia (Silfverberg 2010), Latvia (Bukejs (2013), Lithuania (Tamutis, Tamute, and Ferenca 2011), and northern Poland (Bercio and Folwaczny 1979; Borowiec, Ścibior, and Kubisz 2011).

256. *C. (s. str.) bipunctatus* (Linnaeus, 1758)

Bercio and Folwaczny 1979; Alekseev 2003.

Chern. (Insterburg), Gur. (Friedrichstein), Zel. (Rauschen). [PAL]

257. *C. (s. str.) cordiger* (Linnaeus, 1758)

Lentz 1879; Bercio and Folwaczny 1979.

Without localities. [SIE]

Note: The occurrence of the species needs confirmation.

258. *C. (s. str.) decemmaculatus* (Linnaeus, 1758)

= *decempunctatus* (Linnaeus, 1761)

= *frenatus* Fabricius, 1792

Bercio and Folwaczny 1979; Alekseev 2003.

Gur. (Königsberg, Friedrichstein), Gvard. (Wehlau). [EUR]

259. *C. (s. str.) distinguendus* Schneider, 1792

= *variegatus* Gyllenhal, 1813

Alekseev 2002, 2003; Alekseev, Bukejs, and Balalaikins 2012.

Pravd. [SIE]

[- *C. (s. str.) flavipes* Fabricius, 1781]

Alekseev 2002 (misidentification), 2003 (misidentification).

Note: Earlier reports of this species from the Kaliningrad Region were based on misidentification. Faunal data on this species in the region are absent; therefore, it is removed from the list of species. Its occurrence in local fauna is possible. Species is known in Belarus (Lopatin and Nesterova 2005), Estonia (Silfverberg 2010), Latvia (Bukejs 2013), Lithuania (Tamutis, Tamute, and Ferenca 2011), and northern Poland (Bercio and Folwaczny 1979; Borowiec, Ścibior, and Kubisz 2011).

260. *C. (s. str.) hypochoeridis* (Linnaeus, 1758)

Lentz 1879; Bercio and Folwaczny 1979; Alekseev 2003.

Chern. (Insterburg), Zel. (Warnicken). [EUR]

Note: All reports of this species must be reviewed, because they can refer to a sibling species, *C. solivagus*. The occurrence of this species in local fauna needs further confirmation.

261. *C. (s. str.) janthinus* Germar, 1824

Alekseev, Bukejs, and Balalaikins 2012.

Zel. [ASE]

262. *C. (s. str.) laetus* Fabricius, 1792

Bercio and Folwaczny 1979; Alekseev 2003.

Bagr. (Heiligenbeil). [TUE]

Note: Its occurrence in local fauna needs further confirmation.

263. *C. (s. str.) moraei* (Linnaeus, 1758)

Bercio and Folwaczny 1979; Alekseev 2003.

Chern. (Insterburg), Gur. (Quednau), Nest. (Rominten), Zel. (Rauschen); Bagr., Chern., Gur., Nem., Nest., Oz., Pravd., Zel. [EUR]

264. *C. (s. str.) nitidulus* Fabricius, 1787

Bercio and Folwaczny 1979; Alekseev 2003.

Bagr. (Heiligenbeil); Nest. [ASE]

265. *C. (s. str.) nitidus* (Linnaeus, 1758)

Bercio and Folwaczny 1979; Alekseev and Bukejs 2014.

Zel. (Rauschen); Bagr., Gur., Zel. [EUR]

266. *C. (s. str.) octopunctatus* (Scopoli, 1763)

Bercio and Folwaczny 1979; Alekseev 2003.

Zel. (Rauschen), Oz. (Trempen); Gur., Zel. [SIE]

267. *C. (s. str.) parvulus* O. F. Müller, 1776

Bercio and Folwaczny 1979; Alekseev 2003.

Zel. (Warnicken, Rauschen); Gur., Zel. [ASE]

268. *C. (s. str.) quadripustulatus* Gyllenhal, 1813

Bukejs and Alekseev 2009; Alekseev and Bukejs 2010b. Pravd. [EUR]

269. *C. (s. str.) sericeus* (Linnaeus, 1758)

Bercio and Folwaczny 1979; Alekseev 2003.

Nest. (Rominten), Zel. (Warnicken); Bagr., Gvard., Nest. [SIE]

[*C. (s. str.) solivagus* Leonardi et Sassi, 2001]

Note: Known in Belarus (Lopatin and Nesterova 2005), Estonia (Bukejs 2012a), Latvia (Bukejs 2013), Lithuania (Bukejs and Barševskis 2008; Tamutis, Tamute, and Ferenca 2011), and Poland (Borowiec, Ścibior, and Kubisz 2011).

270. *C. (s. str.) sexpunctatus* (Linnaeus, 1758)

Bercio and Folwaczny 1979; Alekseev 2003.

Zel. (Rauschen); Bagr., Krasn., Zel. [ASE]

271. *C. (s. str.) violaceus* Laicharting, 1781

Bercio and Folwaczny 1979; Alekseev and Bukejs 2011a; Alekseev, Bukejs, and Balalaikins 2012.

Chern. (Insterburg); Bagr., Chern., Zel. [CEU]

272. *C. (s. str.) vittatus* Fabricius, 1775

Bercio and Folwaczny 1979; Alekseev 2003.

Gur. (Königsberg), Gvard. (Löwenhagen), Nest. (Rominten), Zel. (Warnicken). [EUR]

273. *C. (Disopus) pini* (Linnaeus, 1758)

Skwarra 1929; Bercio and Folwaczny 1979; Alekseev 2003.

Pravd. (Zehlau), Zel. (Rauschen). [SIE]

274. *C. (Heterinchnus) coryli* (Linnaeus, 1758)

Bercio and Folwaczny 1979; Alekseev 2003, 2012; Bukejs and Alekseev 2009; Alekseev and Bukejs 2011a. Gur. (Königsberg), Nest. (Rominten); Zel. [ASE]

Subtribe Pachybrachina Chapuis, 1874

Genus Pachybrachis Chevrolat, 1836

275. *P. hieroglyphicus* (Laicharting, 1781)

Bercio and Folwaczny 1979; Alekseev 2003, 2012; Alekseev and Bukejs 2011a.

Chern. (Insterburg), Zel. (Loppöhen); Bagr., Chern., Gur., Gvard., Nem., Nest., Zel. [SIE]

Subfamily Eumolpinae Hope, 1840

Tribe Bromiini Chapuis, 1874

Genus Bromius Chevrolat, 1836

= *Adoxus* Kirby, 1837

= *Eumolpus* Kugelann, 1798

276. *B. obscurus* (Linnaeus, 1758)

Bercio and Folwaczny 1979; Alekseev 2003; Alekseev and Bukejs 2011a.

Chern. (Insterburg), Gvard. (Löwenhagen); Bagr., Chern., Gur., Gvard., Krasn., Nest., Pravd., Zel. [ASE]

Genus Pachnephorus Redtenbacher, 1845

277. *P. pilosus* (Rossi, 1790)

Bercio and Folwaczny 1979; Alekseev 2003.

Oz. (Trempen), Zel. (Rauschen). [SIE]

278. *P. tessellatus* (Duftschmid, 1825)

Bercio and Folwaczny 1979; Alekseev 2002, 2003.

Chern. [PAL]

The analysis of the distribution of leaf beetle species of the Kaliningrad Region shows that the range of chorotypes is rather wide. Sibero-European (60 species, or 21.59%), Asiatic-European (57, or 20.51%), and Palaearctic (40, or 14.39%) species are considered to be predominant (Figure 1). The North-European, Holarctic-Oriental, and Palaearctic-Oriental zoogeographical elements are each represented by one species; Turano-Europeo-Mediterranean is represented by two species, and Cosmopolitan by three species. In general, biogeographical composition of the leaf beetles of the Kaliningrad Region has no significant differences from analogous compositions of Latvia or Lithuania (Bukejs 2012b).

The following species occur in the Kaliningrad Region at the northern or northeastern borders of their range: *Bruchus luteicornis*, *Aphthona czwalinai*, *Cryptocephalus violaceus*, *C. janthinus*, *Chrysolina herbacea*, and *Hispa atra*. The sporadic distribution of some other species (*Bruchidius marginalis*, *Spermophagus calystegiae*, *Chrysolina oricalcia*, *Lochmaea crataegi*, *Sermylassa halensis*, and *Colaphellus sophiae*) in the region is evidently associated with closeness to the distribution borders too, but their ranges extend to the territory of Latvia (Bukejs 2013).

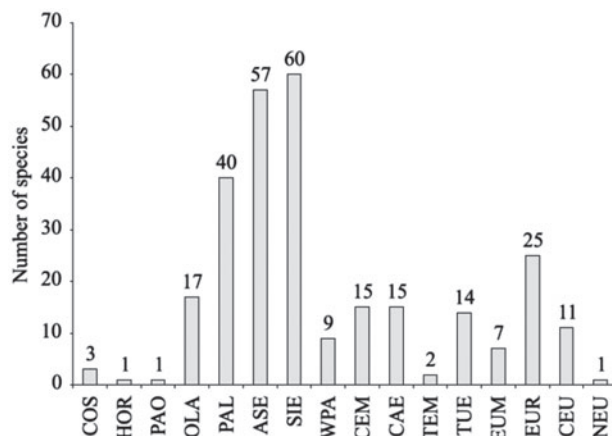


Figure 1. Biogeographical structure of Chrysomelidae fauna of the Kaliningrad Region: COS – Cosmopolitan, HOR – Holarctic-Oriental, PAO – Palaearctic-Oriental, OLA – Holarctic, PAL – Palaearctic, ASE – Asiatic-European, SIE – Sibero-European, WPA – West-Palaearctic, CEM – Centralasiatic-Europeo-Mediterranean, CAE – Centralasiatic-European, TEM – Turano-Europeo-Mediterranean, TUE – Turano-European, EUM – Europeo-Mediterranean, EUR – European, CEU – Central-European, NEU – North-European.

Such species as *Leptinotarsa decemlineata*, *Acanthoscelides obtectus*, *Bruchus rufimanus*, and *Bruchus pisorum* are associated with cultural plants or stored products. They are invaded or accidentally introduced in the region during the eighteenth to twentieth centuries.

The omnipresent (distributed in all districts of the region) and frequent species are often associated with ruderal and cultural plants of open and urbanized habitats: *Orsodacne cerasi*, *Oulema gallaeciana*, *Gastrophysa viridula*, *Cryptocephalus fulvus*, *Galeruca tanacetii*, *Chaetocnema concinna*, *Neocrepidodera transversa*, *Phyllotreta atra*, *Ph. vittula*, and some others. Among arboreal leaf beetles, the most frequent species are: *Agelastica alni*, *Chrysomela populi*, *Gonioctena viminalis*, *Lochmaea caprea*, *Crepidodera aurata*, and *C. aurea*. The species associated with broad-leaved forestal habitats or little transformed ecosystems (such stenotopic species as *Hermaeophaga mercurialis*, *Cryptocephalus quadripustulatus*, and some others) are restricted to their distribution ranges and locally occur in the region due to habitat scarcity.

The oligophagous species are predominant among the common leaf beetles of the region. The monophagous species associated with one host plant only are rarer. But the frequency of occurrence of leaf beetle species primarily depends on the frequency of host plants. The species of the xerothermic habitats (*Aphthona czwalinai*, *Phyllotreta astrachanica*, *Psylliodes marcida*, *Cryptocephalus bilineatus*, *Bruchidius villosus*, and *Bruchus luteicornis*) are mostly concentrated in the western and southwestern parts of the region on the Baltic Seacoasts.

Some leaf beetle species are mentioned for the region in the catalogue (Bercio and Folwaczny 1979) only, and

their occurrence in the region needs future confirmation. The new findings of the representatives of such interesting genera as *Macroplea*, *Mniophila*, *Dibolia*, and *Smaragdina* are expected, but till the moment not known from the region. The re-registration of these species and search of potential taxa make further faunal study of Chrysomelidae s. l. in the Kaliningrad Region interesting and showing great promises.

References

- Alekseev, V. I. 2002. "New Beetles (Coleoptera) Species in Kaliningrad Region (Baltic Coast)." *Baltic Journal of Coleopterology* 2 (2): 137–143.
- Alekseev, V. I. 2003. "On Fauna of Leaf Beetles (Coleoptera: Chrysomelidae) and Seed Beetles (Coleoptera: Bruchidae) of the Kaliningrad Region (Baltic Coast)." *Baltic Journal of Coleopterology* 3 (1): 63–75.
- Alekseev, V. I. 2005. "Фауна жуков семейства семяеды (Arionidae) и зерновки (Bruchidae) Калининградской области." [The Fauna of Beetles from Families Arionidae and Bruchidae of the Kaliningrad Region] In *Труды научной конференции «Инновации в науке и образовании-2005»* [Transactions of Scientific Conference "Innovations in Science and Education"], Калининград [Kaliningrad], октября 19–21 [October 19–21], ч. 1, 36–38.
- Alekseev, V. I. 2010. *Фауна и экологическая характеристика водных жесткокрылых (Coleoptera) Калининградской области* [Fauna and Ecology of Water Beetles (Coleoptera) of the Kaliningrad Region]. Kaliningrad: FGOU VPO KGTU.
- Alekseev, V. I. 2012. "Жуки филло- и кормофаги (Coleoptera) Куршской косы." [The Phyllo- and Cormophagous Beetles (Coleoptera) of the Curonian Spit] In *Проблемы изучения и охраны природного и культурного наследия национального парка «Куршская коса»* [Problems of Research and Protection of Natural and Cultural Heritage of the National Park "Curonian Spit"], edited by Калининград: БФУ им. И. Канта, Vol. 8, 28–37, Kaliningrad: I.Kant Baltic Federal University.
- Alekseev, V. I., and A. Bukejs. 2010a. "Contributions to the Knowledge of Beetles (Insecta: Coleoptera) in the Kaliningrad Region. 1." *Baltic Journal of Coleopterology* 10 (2): 157–176.
- Alekseev, V. I., and A. Bukejs. 2010b. "Листоеды (Coleoptera, Chrysomelidae) болота Целау (Калининградская область, Россия)." [The Leaf-beetles (Coleoptera, Chrysomelidae) of the Zehlau Bog (the Kaliningrad Region, Russia)] In *Экосистемы болот и озер Белорусского поозерья и сопредельных территорий: современное состояние, проблемы использования и охраны. Материалы международной научной конференции* [The Ecosystems of Bogs and Lakes of the Belorussian Lake Region and Adjacent Territories: Contemporaneous Situation, Problems of Use and Conservation. Book of Abstracts], Витебск [Vitebsk], декабря 16–17, 2010 года [December 16–17, 2010], 25–27.
- Alekseev, V. I., and A. Bukejs. 2011a. "To the Fauna of Leaf-beetles (Coleoptera: Chrysomelidae s. l.) of the Curonian Spit." In *Book of Abstracts: 6th International Conference "Research and Conservation of Biological Diversity in Baltic Region"*, Daugavpils, Latvia, April 28–29, 2011, 14–15.
- Alekseev, V. I., and A. Bukejs. 2011b. "Contributions to the Knowledge of Beetles (Insecta: Coleoptera) in the Kaliningrad Region. 2." *Baltic Journal of Coleopterology* 11 (2): 209–231.
- Alekseev, V. I., and A. Bukejs. 2014. "Contributions to the Knowledge of Beetles (Insecta: Coleoptera) in the Kaliningrad Region. 4." *Zoology and Ecology* 24 (1): 26–32. doi:10.1080/21658005.2013.873233.
- Alekseev, V. I., A. Bukejs, and M. Balalaikins. 2012. "Contributions to the Knowledge of Beetles (Insecta: Coleoptera) in the Kaliningrad Region. 3." *Zoology and Ecology* 22 (2): 99–110.
- Alekseev, V. I., and N. B. Nikitsky. 2008. "Rare and New for the Fauna of the Baltic States Beetles (Coleoptera) from the Kaliningrad Region." *Acta Zoologica Lituanica* 18 (4): 254–259.
- Alexandrovitch, O. R., I. K. Lopatin, A. D. Pisanenko, V. A. Tsinkevitch, and S. M. Snitko. 1996. *A Catalogue of Coleoptera (Insecta) of Belarus*. Minsk: Fund Fundamental Research of Republic of Belarus.
- Bercio, H., and B. Folwaczny. 1979. *Verzeichnis der Käfer Preußens* [The Check-list of Beetles of Prussia]. Fulda: Parzeller.
- Bieńkowski, A. O. 2004. *Leaf-beetles (Coleoptera: Chrysomelidae) of the Eastern Europe. New Key to Subfamilies, Genera and Species*. Moscow: Mikron-print.
- Bieńkowski, A. O. 2007. *A Monograph of the Genus Chrysolina Motschulsky, 1860 (Coleoptera: Chrysomelidae) of the World. Part 1*. Moscow: Techpolygraphcentre Publ.
- Borowiec, L. 1999. *A World Catalogue of the Cassidinae (Coleoptera: Chrysomelidae)*. Wrocław: Biologia Silesiae.
- Borowiec, L. 2004. "The Leaf Beetles (Chrysomelidae) of Europe and the Mediterranean Subregion (Checklist and Iconography)." Accessed January 2014. <http://www.biol.uni.wroc.pl/cassidae/European%20Chrysomelidae/index.htm>
- Borowiec, L., R. Ścibior, and D. Kubisz. 2011. "Critical Check-list of the Polish Chrysomeloidea, Excluding Cerambycidae (Coleoptera: Phytophaga)." *Genus* 22 (4): 579–608.
- Bukejs, A. 2008. "The First Record of Flea Beetle *Argopus nigratarsis* (Gebler, 1823) (Coleoptera: Chrysomelidae) in Baltic and Fennoscandian Fauna of Latvia." *Acta Zoologica Lituanica* 18 (1): 71–73.
- Bukejs, A. 2009a. "To the Knowledge of Flea Beetles (Coleoptera: Chrysomelidae: Alticinae) of the Latvian Fauna. 4. Genus *Aphthona* Chevrolat, 1836." *Acta Zoologica Lituanica* 19 (3): 223–230.
- Bukejs, A. 2009b. "To the Knowledge of Flea Beetles (Coleoptera: Chrysomelidae: Alticinae) of the Fauna of Latvia. 3. Genera *Neocrepidodera* Heikertinger, 1911 and *Crepidodera* Chevrolat, 1836." *Acta Zoologica Lituanica* 19 (2): 109–119.
- Bukejs, A. 2010a. "Materials to the Knowledge of Latvian Seed-beetles (Coleoptera: Chrysomelidae: Bruchinae)." *Baltic Journal of Coleopterology* 10 (2): 177–184.
- Bukejs, A. 2010b. "On Latvian Donaciinae Kirby, 1837 (Coleoptera: Chrysomelidae)." *Acta Biologica Universitatis Daugavpiliensis* 10 (2): 115–124.
- Bukejs, A. 2011. "To the Knowledge of Flea Beetles (Coleoptera: Chrysomelidae: Alticinae) of the Latvian Fauna. 7. Genus *Altica* Geoffroy, 1762." *Acta Zoologica Lituanica* 21 (1): 40–51.
- Bukejs, A. 2012a. "Faunal Records of Leaf-beetles (Coleoptera: Chrysomelidae) in Estonia." *Zoology and Ecology* 22 (1): 37–40.
- Bukejs, A. 2012b. "Taxonomical Structure and Biogeography of Leaf-beetles (Coleoptera: Chrysomelidae s. l.) of the Latvian Fauna." *Acta Biologica Universitatis Daugavpiliensis* 12 (3): 25–34.
- Bukejs, A. 2013. "Catalogue of Latvian Leaf-beetles (Coleoptera: Megalopodidae, Orsodacnidae & Chrysomelidae)." *Latvijas Entomologs* 52: 3–57.

- Bukejs, A., and V. I. Alekseev. 2009. "Eight New and Little-known Leaf-beetles Species (Coleoptera: Megalopodidae & Chrysomelidae) for the Kaliningrad Region." *Baltic Journal of Coleopterology* 9 (1): 45–50.
- Bukejs, A., and A. Barševskis. 2008. "New Leaf-beetle Species, *Cryptocephalus solivagus* Leonardi & Sassi, 2001 (Coleoptera: Chrysomelidae) in the Lithuanian Fauna." *Acta Zoologica Lituanica* 18 (4): 267–269.
- Bukejs, A., and R. Ferenca. 2011. "*Cryptocephalus ochroleucus* Fairmaire, 1859 (Coleoptera: Chrysomelidae): A New Leaf-beetle Species for the Lithuanian Fauna." *Journal of the Entomological Research Society* 13 (3): 49–51.
- Bukejs, A., R. Ferenca, and V. Tamutis. 2011. "New and Insufficiently Known Leaf-beetle Species (Coleoptera: Chrysomelidae) of the Lithuanian Fauna." *Acta Zoologica Lituanica* 21 (2): 107–112.
- Bukejs, A., V. Tamutis, R. Ferenca, and V. I. Alekseev. 2012. "New and Insufficiently Known Leaf-beetle Species (Coleoptera: Chrysomelidae) of the Lithuanian Fauna. 2." *Zoology and Ecology* 22 (3–4): 203–211.
- Bukejs, A., and D. Telnov. 2010. "On Latvian Chrysomelinae (Coleoptera: Chrysomelidae): 4. Genus *Chrysolina* Motschulsky, 1860." *Acta Zoologica Lituanica* 20 (2): 133–150.
- Hayashi, M., K. Morimoto, and Sh. Kimoto. 1984. *The Coleoptera of Japan in Color* [in Japanese]. Vol. IV. Osaka: Hoikusha Publishing.
- Kippenberg, H. 2010. "Chrysomelinae (Excl. *Timarcha*)." In *Catalogue of Palaearctic Coleoptera*, edited by I. Löbl and A. Smetana, Vol. 6, 390–443. Stenstrup: Apollo Books.
- Lentz, F. L. 1879. *Katalog der preußischen Käfer* [The Catalogue of the Preussische Beetles]. Königsberg.
- Löbl, I., and A. Smetana, eds. 2010. *Catalogue of Palaearctic Coleoptera. Volume 6. Chrysomeloidea*. Stenstrup: Apollo Books.
- Lopatin, I. K. 1977. *Leaf-beetles (Chrysomelidae) of Central Asia and Kazakhstan* [in Russian]. Leningrad: Nauka.
- Lopatin, I. K. 1986. *Leaf-beetles of Belarus and Eastern Baltia* [in Russian]. Minsk: Vishejskaja shkola.
- Lopatin, I. K., and K. Z. Kulenova. 1986. *Leaf-beetles (Coleoptera, Chrysomelidae) of Kazakhstan* [in Russian]. Alma-Ata: Nauka.
- Lopatin, I. K., and O. L. Nesterova. 2005. *Insecta of Byelarus: Leaf-beetles (Coleoptera, Chrysomelidae)* [in Russian, English abstract]. Minsk: Tehnoprint.
- Medvedev, L. N. 1982. *Leaf Beetles of Mongolia: Guides* [in Russian]. Moscow: Nauka.
- Medvedev, L. N. 1992. "Leaf Beetles – Chrysomelidae." In *Определитель насекомых Дальнего Востока СССР, том 3, часть 2* [Guides to the Insects of Russian Far East. Coleoptera or Beetles, Vol. 3, Part 2], edited by P. A. Ler, 533–602. Vladivostok: Dalnauka.
- Medvedev, L. N., and L. N. Dubeshko. 1992. *Keys to Leaf-beetles of Siberia* [in Russian]. Irkutsk: University of Irkutsk.
- Silfverberg, H. 2010. "Enumeratio renovata Coleopterorum Fennoscandiae, Daniae et Baltiae." [New Catalogue of Coleoptera of Fennoscandia, Danmark and Eastern Baltic States] *Sahlbergia* 16: 1–114.
- Skwarra, E. 1929. "Die Käferfauna des Zehlaubruches." [The Fauna of the Beetles of the Zehlau Bog] *Schriften der Physikalisch-ökonomischen Gesellschaft zu Königsberg i. Pr.* 66 (2): 181–274.
- Taglianti, V. A., P. A. Audisio, M. Biondi, M. A. Bologna, G. M. Carpaneto, A. De Biase, S. Fattorini, et al. 1999. "A Proposal for a Chorotype Classification of the near East Fauna, in the Framework of the Western Palearctic Region." *Biogeographia* 20: 31–59.
- Tamutis, V., B. Tamute, and R. Ferenca. 2011. "A Catalogue of Lithuanian Beetles (Insecta: Coleoptera)." *ZooKeys* 121: 1–494.
- Warchałowski, A. 2003. *The Leaf-beetles (Chrysomelidae) of Europe and the Mediterranean Region*. Warszawa: Natura optima dux Foundation.