

尤其伟. 1935. 广东赤壤之一新种. 趣味昆虫, 1(2-3): 10-13.

**You, S. T. 1935. A new species of *Purpuricen*us of Kwangtung.
Insectes intéressants, 1(2-3): 10-13.**

廣東赤蟻之一新種

A new species of Purpuricenusa of Kwantung

尤 其 偉

By Swett T. Yu

Purpuricenusa Caputorubeus, sp. nov.

Head bright red, well punctate, covered coarsely with very short brownish hairs; frons with transverse sub-rectangular depression (A. F. 1) bordered by the clypeus anteriorly, by the ganae laterally and by the interantennal elevatus and the antennal supports posteriorly, smooth, depressed gradually in the direction of both sides; ganae (A. F. 2.) deeply-emarginate anteriorly, each with an inner carina; clypeus (post-clypeus) (A. F. 1) as transverse and narrow elevatus, punctate, with middle smooth area, the latter elevated anteriorly; ante-clypeus and labrum (A. F. 1) more or less membranous, reddish brown, formed transversely as narrow sclerites; anterior portion of labrum densely covered with brownish yellow hairs of different length; mandibles (A. F. 1) bidentate, red, with the teeth of black color; maxillary palpi 3-jointed, brownish red, with distal joint the largest, subclavate; labial palpi 2-jointed, blackish red, with same manner as those of the maxillae.

Antennae black, shorter than the body, 11-jointed, with basal two joints bright red, well punctate, 3rd one the longest, as long as 5th and 6th ones combined, 4th to 11th successively and gradually flattened, an inner carina of each joint thus formed, 6th to 10th angulate at the apex on the anterior side, formed somewhat like serrate type; Compound eyes (A. Fr. 4) black, finely-granulate, deeply emarginate at the inner sides.

Prothorax bright red. (dorsum and ventron), finely and

densely punctate on the dorsum; rugose-punctate on the anterior half of the ventron; anterior margin of the prothorax fringed with brownish yellow hairs; and prothorax furnished with the following processes on the dorsal surface:—

1. A conical spine-like process on either sides, at the point measured about $2\frac{1}{5}$ from behind.

2. A median in a little distance from the middle point of the segment behind.

3. An obscure callus on each side in fronto-lateral of the median process.

Meso- and meta-sterna black, very finely punctate, with a pubescence of brownish silvery color; scutellum bright red, triangular, acute at the apex, punctate.

Elytra bright red, more or less parallel-sided, rounded at the apex, very finely and rather densely punctate, each elytron with three irregularly waved prominent lines (under *lox magnifer*) of lighter color as well as a large black spot situated about the middle behind, these two spots meet at the sutural line, formed as a large transverse oval marking which subtruncate behind; legs black, with the trochanter of amber color, femora slightly thickened at the middle portion, those of the hind legs the largest, the 1st joint of the hind tarsus longer than the 2nd one but subequal to the 3rd.

Intercostal process of the prosternum compressed bilaterally, slightly upcurved, rounded behind; that of the mesosternum subperpendicular anteriorly, rounded behind.

Abdomen brownish red, of five visible ventral segments, very finely punctate, very densely fringed with brown hairs along hind margin of the last visible segment.

Measurements for different parts are shown as follows:

- | | |
|--|-----------------------------------|
| 1. Length of body (from the point between antennal supports to the apex of the elytra) | 18 mm, |
| 2. Length of head (from the apex of mandible to hind border of head) | 4 mm. |
| 3. Length of prothorax | 3 ¹ / ₂ mm. |
| 4. Length of elytra | 13 mm. |
| 5. Length of antennae | 14 mm. |
| 6. Length of 3 pairs of legs | 14: 13: 16 mm. |
| 7. Transverse diameter of elytral spot | 5 ¹ / ₂ mm. |
| 8. Longitudinal diameter of elytral spot | 3 ¹ / ₂ mm. |

Type femelle, april, 7, 1932; Ting-hu-shan (鼎湖山), Kao-yao-hsien (高要縣), Kwantung Prov. (廣東省), My collection.

Appendix:

There are 4 species of this genus in my collection. three of them are already named, and I have made brief notes for them in the preceeding papers under the subject "La Konataj Specoj ds Purpuricenus en Chinio".

This new species may be separated from the others by the following synopsis:

1. Head, basal two joints of antennae and scutellum bright red;
prothorax without black spots -----

----- Caputoeubeus, sp. nov.

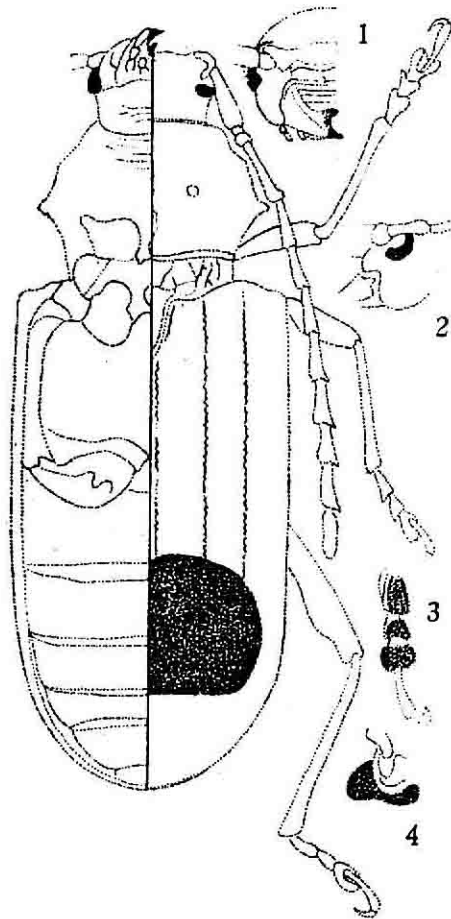
Head, basal two joints of antennae and scutellum black;
prothorax with black spots ----- 2

2. Prothorax without median callosity on dorsum, sutural line of elytra with black hairs; prothoracic dorsum and elytra with black hairs and elytra with 2 black spots -----

----- spectabilis, Motsch

Prothorax with median callosity on dorsum, sutural line of elytra without black hairs; prothoracic dosum and elytra

- without black hairs ----- 3
3. Elytra without black spots ----- *temminchii*, Guern.
 Elytra with 2 small black spots and large one -----
 ----- *ritasemai*, villard.



Purpuricenusa caputocubes
 (magnified)

Left half: ventral aspect of whole body.

Right half: dorsal aspect of whole body.

Appendant figures:

- 1, Cephalic aspect of head.
2. Lateral aspect of head
3. Under surface of tarsus of hind leg.
4. Lateral aspect of antennal support and compound eye.

(Original)