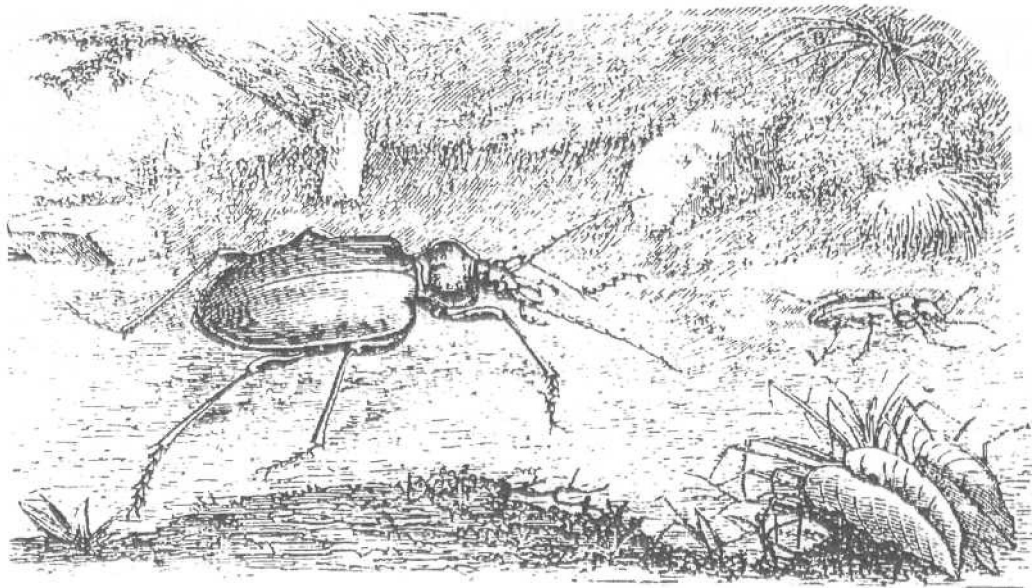


3rd International Symposium of Carabidology



4 - 7 September 1995 Kauniainen, Finland

Programme
Abstracts of Oral Presentations
and Posters List of Participants

**POPULATION STRUCTURE OF *CALOSOMA INVESTIGATOR* (ILLIGER, 1798) AT
NORTH-WEST BORDER OF AREAL**

Alexandrovich, O. R.

Belarus State Pedagogical University, 220809 Minsk, Belarus

Calosoma investigator is a typical species from Palaearctic steppes and it is rare in Europe. The areal of *C. investigator* is expanded. The first specimens were found at Gomel region in 1976. Now it is common at the fields on the sandy soil in the south-east part of the country. Biology and life cycle are unknown yet.

A population of *C. investigator* was investigated by Barber's traps on barley field near Gomel in May-August 1992. All of 189 dissected beetles were macropterous. Females were more abundant than males: sex ratio was 0.25. Females had more broad *pronotum* ($7,0 \pm 0,2$ mm against $6,5 \pm 0,15$ from males) and more length elytra $15,2 \pm 0,2$ mm against $14,0 \pm 0,2$ mm from males). 35% of a population were the beetles, which were overwintered more than one time, young ones were more numerous. Young females had larger numbers of mature eggs than old ones. Mature eggs were found from June to August. The peak of the numbers of mature eggs in ovarium was in June.

The periods of maximal activity males and females were closed in June. Abundance of females in population of *C. investigator* is a character feature of species with expanding areal.