

A new species of the genus *Ceratoryctoderus* Arrow, 1908 (Coleoptera, Scarabaeidae, Dynastinae) from Sangir Island, northeastern Indonesia

Shigeto Yamaya

Entomological Laboratory, Nagaoka Municipal Science Museum,
Yanagihara-machi 2-1, Nagaoka, Niigata, 940-0072 Japan

インドネシアのサンギール島からもたらされた *Ceratoryctoderus* 属の 1 新種

山屋 茂人 : 〒940-0072 新潟県長岡市柳原町 2-1 長岡市立科学博物館

Abstract: *Ceratoryctoderus mototanii* sp. nov. is described from Sangir Island, northeastern Indonesia.

Key words: Dynastinae, *Ceratoryctoderus*, new species, Sangir Island, Indonesia.

The genus *Ceratoryctoderus* was erected by Arrow (1908) for *Stypotrupes candezei* Snellen van Vollenhoven, 1866 and contains three species at present. They are endemic to Sulawesi Island and in the allopatric relationship: *C. candezei* (Snellen van Vollenhoven) is known from northern Sulawesi, *C. armatus* Dechambre, 2001 from central Sulawesi and *C. borchimanni* Endrödi, 1959 from southern Sulawesi. This distribution pattern reveals that the genus was divergent in Sulawesi and this phenomenon is the rare case in the subfamily Dynastinae.

Through the courtesy of Mr. Nobuhiko Katsura (Tokyo), I had an opportunity to examine the specimens of this genus from Sangir Island, 200 km north of northern Sulawesi. I found that these specimens had some distinctive characters which were different from other known species of this genus. Therefore, I would like to describe it as a new species.

Before going further, I wish to express my hearty thanks to Dr. Isao Mototani (Tokyo) for his kind advice for my study.

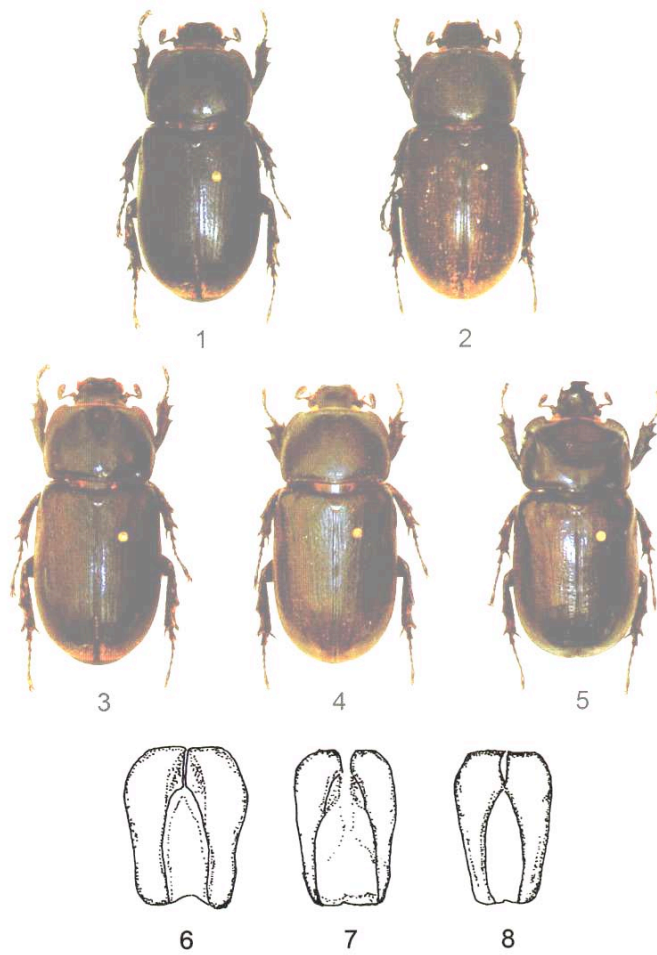
Ceratoryctoderus mototanii Yamaya, sp. nov.

(Figs. 1, 2, 6)

Oblong and flattened. Black, with scapes of palpi, antennae, and ventral surface dark reddish brown.

Male. Clypeus subtrapezoidal, broad, 2.6 times as wide as long, with circular punctures; punctures becoming sparser toward base; lateral sides straightly convergent forward; frontal margin broadly emarginate, broadly reflexed, provided with a tubercle near each anterior angle. Frons impunctate except for near eyes. Antennae 10-jointed; club nearly as long as segments 2-7 combined. Pronotum broad, as wide as long, with circular punctures denser at middle; all margins marginated; median longitudinal furrow broad, deep, extending from near base to middle, becoming slightly wider toward anterior end. Prosternal process high; apex truncated. Scutellum triangular, 1.3 times as wide as long, sparsely, finely punctate except for near lateral margins and near apex; lateral sides nearly straight; apex blunt. Elytra long, 1.4 times as long as wide, provided rows of punctures; punctures large, deep, ocellate-umbilicate, nearly adjacent to each other. Pygidium retracted under abdomen, provided with circular punctures, densely at base, becoming sparser toward anterior portion.

Shigeto Yamaya



Figs.1-2. *Ceratoryctoderus mototanii* sp. nov. 1, ♂; 2, ♀.

Figs. 3-5. *Ceratoryctoderus* spp. 3, *C. candezei*; 4, *C. armatus*; 5, *C. borchmanni*.

Figs. 6-8. Male genitalia of *Ceratoryctoderus* spp. 6, *C. mototanii* sp. nov.; 7, *C. candezei*; 8, *C. armatus*.

Anterior tibia with three outer teeth. Anterior tarsus thickened, 5th joint nearly equal in length to 1-4 joints combined. Parameres of male genitalia broad; strongly and arcuately convergent from behind middle, with apex truncated.

Length: 33.8-37.3 mm, width: 15.4-16.3 mm.

Female. Clypeus subtrapezoidal, broad, 2.6 times as wide as long, with circular punctures; punctures becoming sparser toward base; lateral sides straightly convergent forward; frontal margins broadly emarginate, strongly reflexed near anterior angles. Clypeo-frontal suture indistinct. Frons with two small tubercles. Pronotum with median longitudinal furrow deep, extending from anterior quarter, becoming slightly wider at anterior end. Elytra provided rows of punctures; punctures large, deep, ocellate-umbilicate, bearing tufts of short reddish brown setae, and nearly adjacent to each other. Anterior tibia with three outer teeth. Anterior tarsus not thickened.

Length: 35.1-36.4 mm, Width: 14.6-15.3 mm.

Type series. Holotype: ♂, Bukitt Bembaluh, southeast Tahuna, Sangir Island, NE Indonesia, 21. Nov. 2009, native collector leg., preserved in the collection of the Nagaoka Municipal Science Museum. Paratypes: 8♂♂, 6♀♀, the same data as for the holotype.

The present new species is closely allied to *Ceratoryctoderus candezei* Fairmaire and *C. armatus* Dechambre, but differs from them by the following points: clypeus broader, frontal margin broadly excavated; punctures of clypeus and pronotum circular, not ocellate-umbilicate; posterior tarsus slenderer; parameres of male genitalia broader, and so on.

要 約

この属は Arrow (1908) により創設されたもので、属のタイプには *Stypotrupes candezei* Snellen van Vollenhoven, 1866 が指定されている。その後、*borchmanni* Endrödi, 1959 と *armatus* Dechambre, 2001 が記載され、3 種がこの属のメンバーとして知られる。この 3 種の分布はセレベス島内ですみわけ関係にあるようで、北部に *candezei* が、中部に *armatus*、そして南部に *borchmanni* が分布している。この分布様式を見る限り、セレベス島内で種分化をしたことが同われ、カブトムシ亜科としては珍しい例といえよう。

今回筆者はセレベス島の北方に位置するサンギール島から得られた本属を検査する機会に恵まれた。それは *candezei* と *armatus* に近い種であるが、オス交尾器の形状、頭盾前縁が大きく抉られること、頭盾や前胸の点刻が小さいことなど、いくつか固有の特徴が認められることから、*Ceratoryctoderus mototanii* Yamaya, sp. nov. として記載した。頭盾や前胸背の点刻などは分布の近い *candezei* より、むしろ分布域を大きくたがえる *armatus* に近似する。

References

- Arrow, G. J., 1908. A contribution to the classification of the Coleoptera family Dynastidae. *Transaction of the Entomological Society of London*, 1908: 321-358.
- Dechambre, R-P., 2001. Le genre *Ceratoryctoderus* (Coleoptera, Dynastidae). *Coleopteres*, 7(1): 1-6.
- Endrödi, S., 1959. Neue und bemerkenswerte Kaferformen. Zurr Kenntnis der Dynastinen der zoologischen Forschungsinstitutes und Museums Alexander Koenig, Bonn. *Bonner Zoologische Beitragen*, 10: 116-125.
- Vollenhoven, S. C. Snellen v., 1866. Beschrijving van eenige nieuwe soorten van Coleoptera uit Ost-Indie. *Tijdschrift voor Entomologie*, 9: 222-229.