

See discussions, stats, and author profiles for this publication at: <https://www.researchgate.net/publication/301578337>

# Four new species of *Trigonopterus* Fauvel from the Island of New Britain (Coleoptera, Curculionidae)

Article in *ZooKeys* · April 2016

DOI: 10.3897/zookeys.582.7709

CITATION

1

READS

169

3 authors:



**Matthew Van Dam**

California Academy of Sciences

46 PUBLICATIONS 163 CITATIONS

[SEE PROFILE](#)



**Raymond Laufa**

8 PUBLICATIONS 10 CITATIONS

[SEE PROFILE](#)



**Alexander Riedel**

Staatliches Museum für Naturkunde Karlsruhe

202 PUBLICATIONS 733 CITATIONS

[SEE PROFILE](#)

Some of the authors of this publication are also working on these related projects:



weevil phylogenomics [View project](#)

# Four new species of *Trigonopterus* Fauvel from the island of New Britain (Coleoptera, Curculionidae)

Matthew H. Van Dam<sup>1</sup>, Raymond Laufa<sup>2</sup>, Alexander Riedel<sup>3</sup>

**1** SNSB-Zoological State Collection, Münchhausenstr. 21, D-81247 Munich, Germany **2** School of Natural & Physical Sciences, The University of Papua New Guinea, PO Box 320, UNIVERSITY 134, National Capital District, Papua New Guinea **3** State Museum of Natural History Karlsruhe, Erbprinzenstr. 13, D-76133 Karlsruhe, Germany

Corresponding author: *Alexander Riedel* ([riedel@smnk.de](mailto:riedel@smnk.de))

---

Academic editor: *M. Alonso-Zarazaga* | Received 6 January 2016 | Accepted 2 March 2016 | Published 21 April 2016

<http://zoobank.org/3C1E0FB4-6343-4894-9C34-408983587BB7>

---

**Citation:** Van Dam MH, Laufa R, Riedel A (2016) Four new species of *Trigonopterus* Fauvel from the island of New Britain (Coleoptera, Curculionidae). ZooKeys 582: 129–141. doi: 10.3897/zookeys.582.7709

---

## Abstract

The hyperdiverse genus *Trigonopterus* has its center of diversity in Melanesia, but only a single species is recorded from the Bismarck Archipelago to date. Here we describe four new species from the island of New Britain: *T. chewbacca* **sp. n.**, *T. obsidianus* **sp. n.**, *T. puncticollis* **sp. n.** and *T. silaliensis* **sp. n.** We provide cytochrome oxidase subunit I (*cox1*) sequences of the new species and a key to all five species known from the Bismarck Archipelago.

## Keywords

Bismarck Archipelago, *cox1*, Cryptorhynchinae, DNA barcoding, endemism, hyperdiverse, morphology, New Guinea, Nakanai Range, weevils

## Introduction

*Trigonopterus* Fauvel is a genus of flightless weevils of the subfamily Cryptorhynchinae (Alonso-Zarazaga and Lyal 1999). It is distributed in Southeast Asia (Riedel et al. 2014), Australia (Riedel and Tänzler 2016) and Melanesia, with its center of diversity in New Guinea (Riedel et al. 2010; Tänzler et al. 2012, Riedel et al. 2013b). Despite

*Trigonopterus* being recorded from the remote islands of Fiji (Zimmerman 1938b), Samoa (Marshall 1931) and New Caledonia (Heller 1916), only one species has been described from the Bismarck Archipelago to date, i.e. *Trigonopterus pembertoni* (Zimmerman 1938a) from New Ireland. Here we describe four new species from the island of New Britain. Presumably, there are many additional new species to be found on this island. Unfortunately, large expanses of low-elevation forests in New Britain have been converted to oil-palm plantations, highlighting the significance of documenting the insect fauna before the remaining forests are gone.

## Materials and methods

This study is based on 18 specimens, the result of a ten-day expedition to the area east of Silali Village in the Nakanai Range of West New Britain during November of 2014 by the first two authors. Specimens were collected by beating foliage and by sifting of leaf litter with subsequent extraction of specimens using Winkler ecollectors (Besuchet et al. 1987). Holotypes were selected from the ten sequenced specimens; their DNA was non-destructively extracted as described by Riedel et al. (2010). Preparation of genitalia follows the method described by Riedel et al. (2014). Illustrations of habitus and genitalia are of holotypes.

Type depositories are cited using the following codes:

- ANIC** Australian National Insect Collection, Canberra, Australia  
**SMNK** Staatliches Museum für Naturkunde, Karlsruhe, Germany.  
**ZSM** Zoologische Staatssammlung, München, Germany.  
**UPNG** University of Papua New Guinea, Entomology Collection

DNA sequencing and sequence analysis follows the method described by Riedel et al. (2010) and Tänzler et al. (2012). In the diagnostic descriptions, only the major characters are given, as in the format outlined by Riedel et al. (2013a, b).

Specimens were studied under a Leica MZ16 dissecting microscope and a fluorescent desk lamp for illumination. Measurements were taken using an ocular grid. Body length was measured in dorsal aspect from the elytral apex to the front of the pronotum, and elytral width between the humeri at their greatest extent and across *both* elytra. Legs were described in an idealized, laterally extended position; there is a dorsal / ventral and an anterior / posterior surface. Habitus illustrations were prepared by photographing the specimens with a DFC450 camera with L.A.S. 4.6.0 software mounted on a Z6 APO (all from Leica Microsystems, Heerbrugg, Switzerland). Photographs of the genitalia were taken under an Axio Imager M2 microscope (Carl Zeiss Microscopy) equipped with 5X or 10X A-Plan lenses and with a JVC KY70 camera (JVC Professional Products); the resulting image stacks were combined using the Helicon Focus 6.2.2 software (Helicon Soft Ltd). For this purpose the genitalia were embedded in glycerol gelatin, as described by Riedel (2005). The genitalia were photographed with their longitudinal axis somewhat raised at the posterior end, to

adequately illustrate the structures of the curved apex. All photographs were enhanced using Adobe Photoshop CS2. Sequence data were submitted to the GenBank, and the accession numbers are provided under each species e.g. as “(GenBank # KU888894)”.

## Taxonomy

### *Trigonopterus* Fauvel, 1862

**Type species.** *Trigonopterus insignis* Fauvel, 1862, by monotypy.

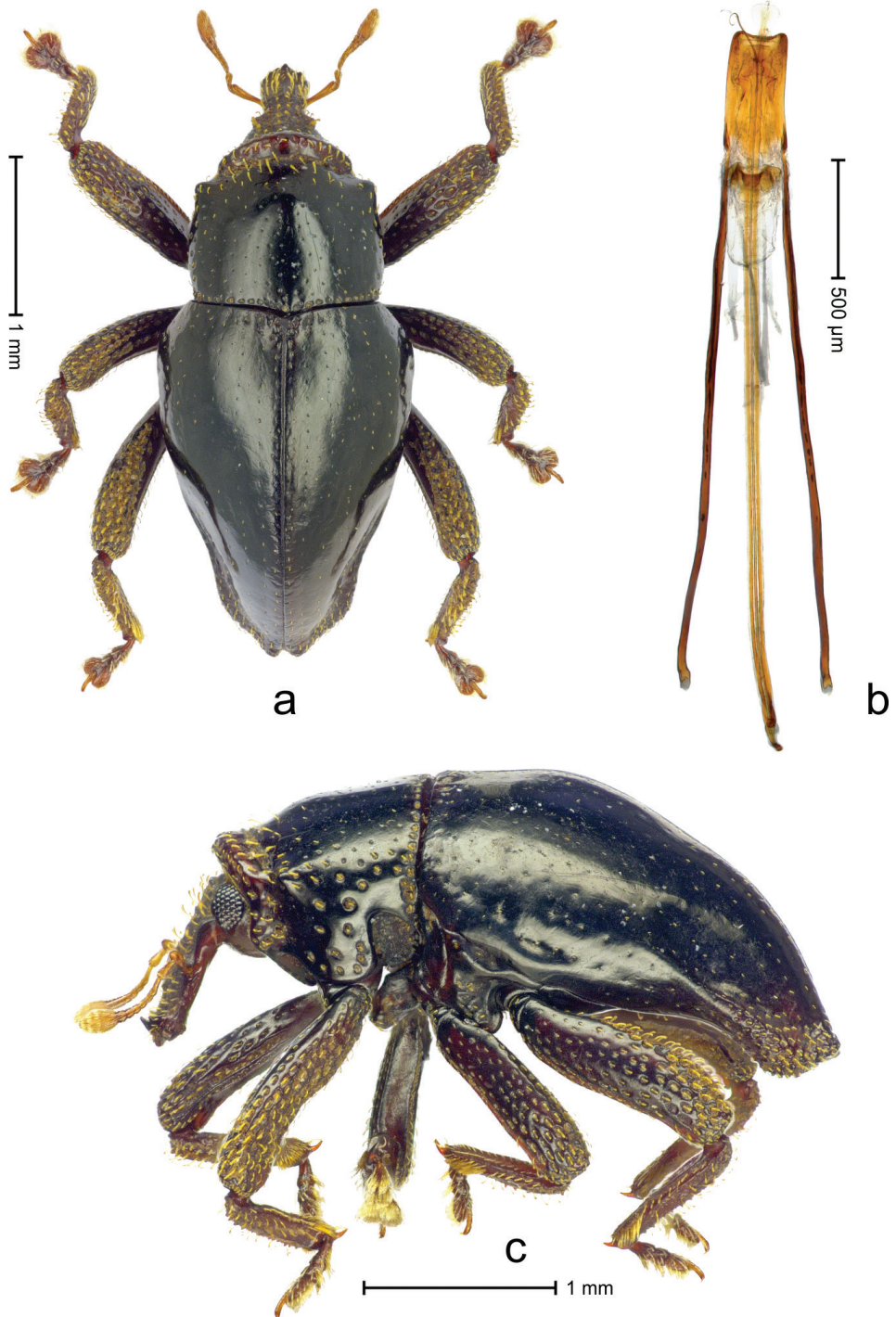
**Diagnosis.** Fully apterous genus of Cryptorhynchinae. Length 1.5–6.0 mm. Rostrum in repose not reaching middle of mesocoxal length. Scutellar shield completely covered by elytra. Mesothoracic receptacle deep, posteriorly closed. Metanepisternum completely absent. Metathoracic spiracles located externally on side of metaventrite. Elytra with 9 striae (sometimes superficially effaced). Tarsal claws minute. Body usually largely unclothed. For additional information, see van de Kamp et al. (2015) and <http://species-id.net/wiki/Trigonopterus>.

## Descriptions of the species

### *Trigonopterus chewbacca* Van Dam & Riedel, sp. n.

<http://zoobank.org/1EA211AA-4D08-4B65-8C3B-9A305B8BD1C9>

**Diagnostic description.** Holotype, male (Fig. 1a–c). Length 3.34 mm. Color black; legs and antenna ferruginous. Body subrhomboid; in dorsal aspect with marked constriction between pronotum and elytron; in profile dorsally convex. Rostrum dorsally with rows of erect, clavate scales; with broad median costa bearing three fine ridges; with pair of sublateral furrows; epistome subglabrous, with sparse long setae, posteriorly forming transverse ridge bearing denticles; median denticle largest. Forehead in middle with denticle; laterally with row of long, erect, clavate scales bordering eye. Pronotum with subapical constriction; anteriorly with coarse punctures and sparse clavate scales, laterally angularly projecting; disk subglabrous, with sparse small punctures; basal margin bordered by row of coarse punctures; laterally subglabrous with sparse coarse punctures, posteriorly with large fovea. Elytra subglabrous, striae weakly marked by rows of minute punctures; intervals flat; laterally few punctures deeply impressed; apex subangulate, medially with suture incised, in profile curved ventrad, slightly beak-shaped, punctate-granulate, with sparse recumbent scales. Femora edentate, coarsely punctate, with sparse suberect scales. Metafemur with dorsoposterior edge markedly denticulate; subapically without stridulatory patch. Tibiae dorsally denticulate, with row of erect scales. Abdominal ventrites 1–2 forming common, subglabrous cavity; lateral rim with sparse scales; ventrite 5 with broad, subglabrous impression, subapically coarsely punctate. Penis (Fig. 1b) with apodemes and transfer apparatus in repose reaching into prothorax,  $> 4 \times$  longer than body of penis; sides of



**Figure 1.** *Trigonopterus chewbacca* Van Dam & Riedel, sp. n., holotype; **a** Dorsal habitus **b** Lateral habitus **c** Penis.

body parallel, apex subangulate, medially with sparse setae; transfer apparatus flagelliform, enveloped by sclerotized sheath; endophallus at base of body with funnel-shaped sclerite; ductus ejaculatorius basally sclerotized, apical portion broken and missing. **Intraspecific variation.** Length 2.78–3.13 mm. Female rostrum with median ridge only basally; in apical third punctate, epistome without distinct transverse ridge.

**Material examined.** Holotype (ANIC): ARC4224 (GenBank # KU888903), Papua New Guinea: West New Britain Prov.: E of Silali Village, Nakanai Range, S05°31.233', E151°03.343', 800 m, from leaf litter, 21-22-XI-2014. Paratypes (SMNK, UPNG): 2 exx, ARC4222 (GenBank # KU888901), ARC4223 (GenBank # KU888902), same data as holotype.

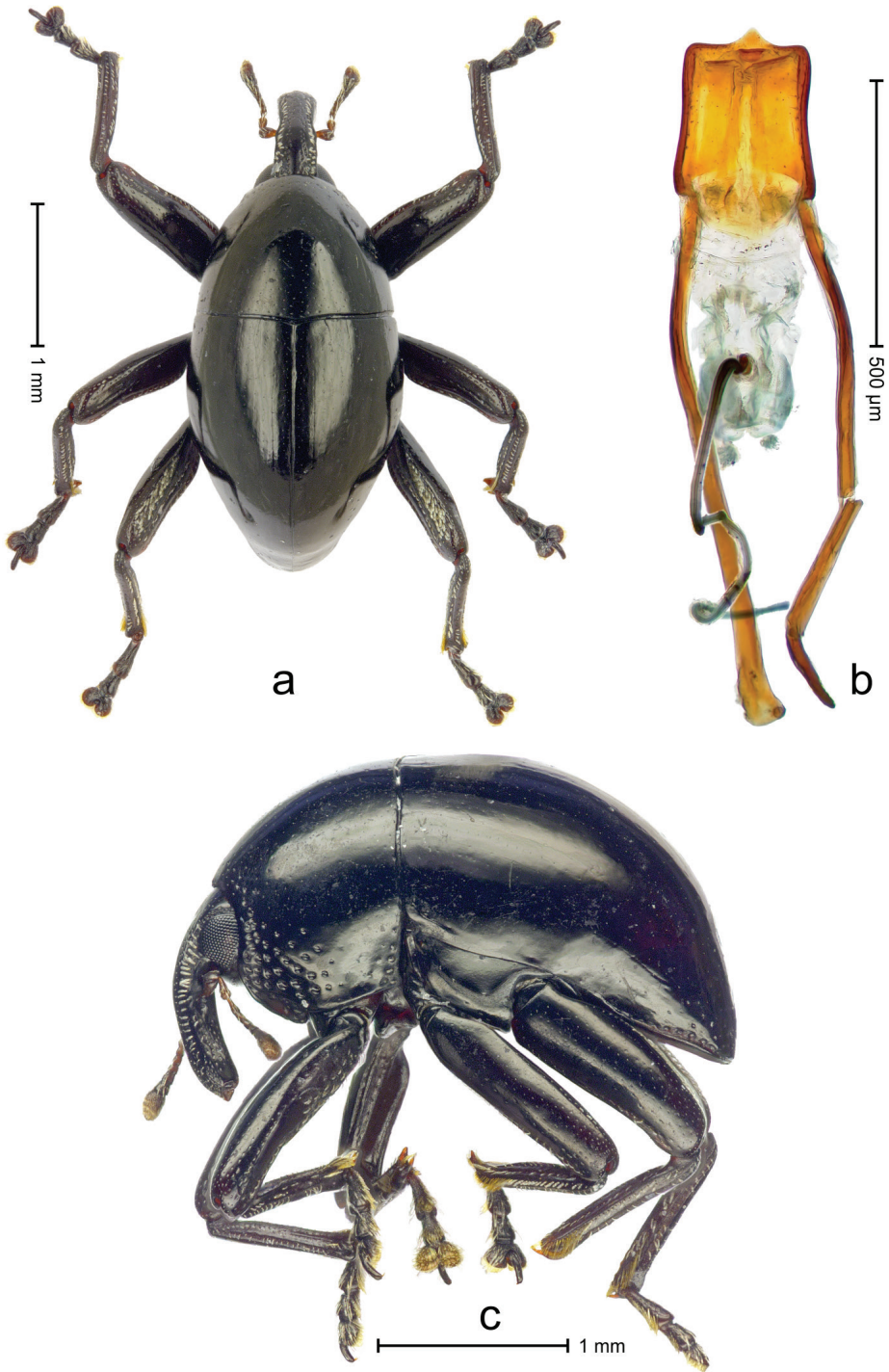
**Etymology.** This epithet is a noun in apposition and based on the likeable fictional character Chewbacca in George Lucas' Star Wars movies, portrayed primarily by Peter Mayhew. This species has dense scales on the head and the legs, which reminds the authors of Chewbacca's dense fur.

**Notes.** Presumably, the species belongs in the *T. basalis*-group of Riedel et al. (2013b).

***Trigonopterus obsidianus* Van Dam & Riedel, sp. n.**

<http://zoobank.org/8AE75F70-A3F7-48EC-93C7-C49B2984C215>

**Diagnostic description.** Holotype (Fig. 2a–c). Length 2.85 mm. Color black. Body subovate, almost without constriction between pronotum and elytron; in profile evenly convex. Rostrum dorsally sparsely punctate, with pair of sublateral furrows containing rows of scales directed mesad; in front of antennal insertion with shallow lateral constriction. Eye with dorsal margin weakly carinate, bordered by furrow. Forehead with sparse minute punctures. Pronotum with disk subglabrous, with minute punctures; sides above coxa with scattered, coarse punctures; base medially weakly extended towards elytral suture. Elytra subglabrous, including near base and humeri; striae hardly visible. Legs. Femora subglabrous, with minute punctures. Metafemur dorsally with elongate patch of dense silvery scales; posterior surface with pair of longitudinal furrows containing rows of indistinct scales parallel to ventral and dorsal edge; dorsoposterior edge distinct. Mesotibia apically with uncus and separate, much larger premucro. Metatibia in subapical third ventrally with weak swellings, but not denticulate; apically with uncus but no premucro. Abdominal ventrites 1 and 2 medially forming common cavity; ventrite 2 laterally swollen and with suberect scales; posterior edge projecting; ventrite 5 flat, subglabrous, dull, with sparse minute punctures. Penis (Fig. 2b) with sides of body subparallel, weakly concave; apex with median triangular extension, symmetrical; endophallus with short, spiniform transfer apparatus directed ventrad in repose, without distinct sclerites; ductus ejaculatorius without bulbus. **Intraspecific variation.** Length 2.58–2.85 mm. Female mesotibia apically with large uncus and much smaller premucro. Female abdominal ventrites 1 and 2 medially flat.



**Figure 2.** *Trigonopterus obsidianus* Van Dam & Riedel, sp. n., holotype; **a** Dorsal habitus **b** Lateral habitus **c** Penis.

**Material examined.** Holotype (ANIC): ARC4216 (GenBank # KU888896), Papua New Guinea: West New Britain Prov.: E of Silali Village, Nakanai Range, S05°31.233', E151°03.343', 800 m, from foliage, 21-22-XI-2014. Paratypes (SMNK, UPNG): 2 exx, ARC4215 (GenBank # KU888895), ARC4217 (GenBank # KU888897), same data as holotype.

**Etymology.** This epithet is based on the Latin adjective *obsidianus* and refers to the color of the polished mineral obsidian, which resembles the pronotum and elytra of this species.

**Notes.** This species belongs to the *T. politus*-group of Riedel et al. (2013b) and is similar to *T. politus* (Faust) of the Papuan Peninsula. It can be distinguished by the symmetrical apex of the penis and the less distinct denticles of the male metatibia.

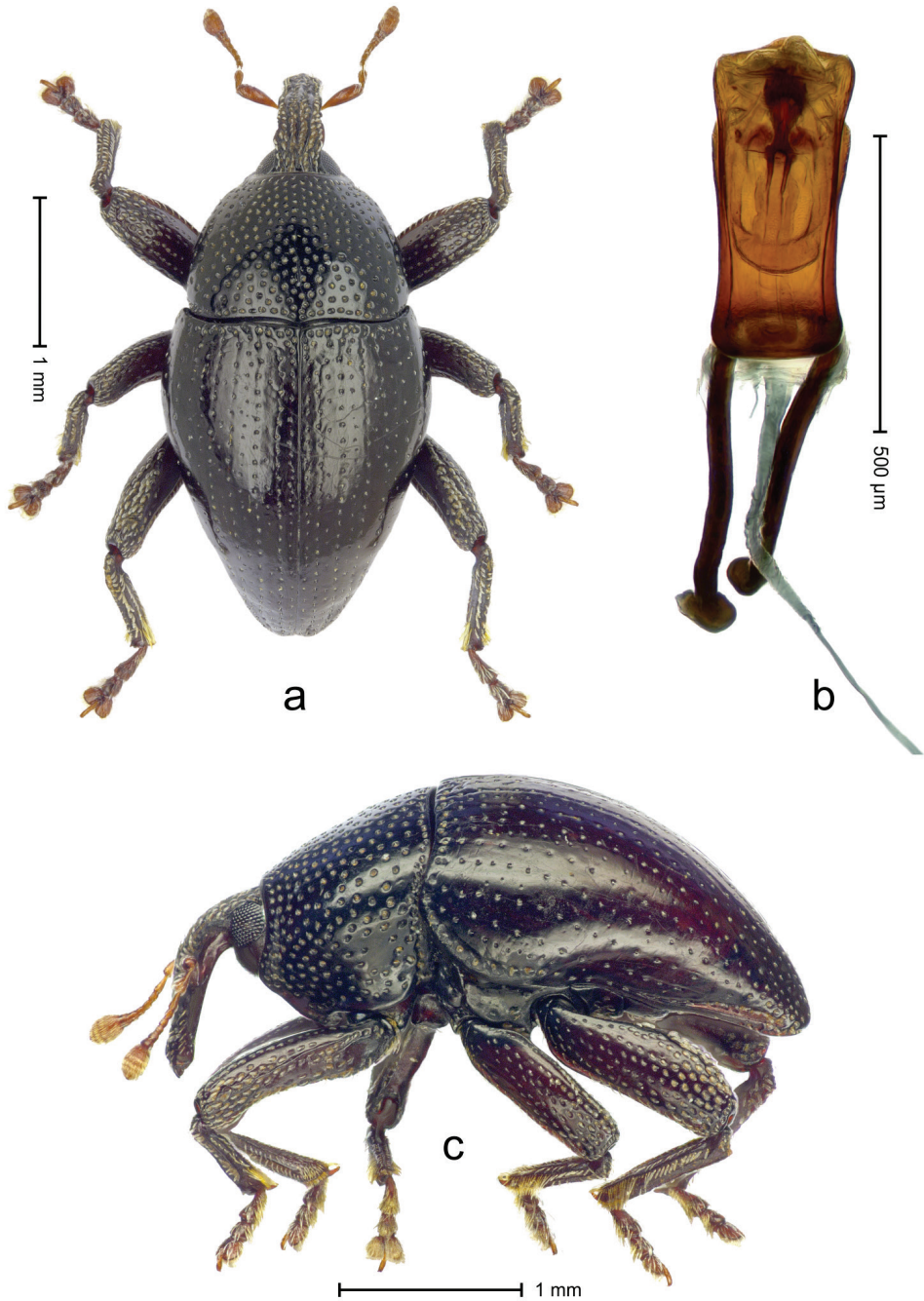
***Trigonopterus puncticollis* Van Dam & Riedel, sp. n.**

<http://zoobank.org/69951605-F4A2-4EE1-94B0-6A771B7236CA>

**Diagnostic description.** **Holotype**, male (Fig. 3a–c). Length 3.06 mm. Color black, antenna and tarsi ferruginous. Body subovate; with weak constriction between pronotum and elytra; in profile evenly convex. Rostrum in basal half with median and pair of submedian carinae, intervening furrows with rows of yellowish-transparent scales; apical half of rostrum coarsely punctate-rugose, with sparse suberect setae. Forehead coarsely punctate-rugose, punctures with subrecumbent scales pointing backwards. Pronotum coarsely punctate; distance between punctures subequal to their diameter; each puncture containing one inconspicuous seta. Elytra finely punctate, along basal margin with transverse row of deeper and denser punctures; striae impressed as fine lines; marked by rows of small punctures; intervals flat, subglabrous, with few minute punctures; lateral stria behind humerus with dense row of deep punctures. Femora edentate; subapically coarsely punctate, with recumbent scales. Anteroventral ridge of profemur in apical third shortened, forming blunt angulation. Metafemur dorsoposteriorly denticulate; subapically without stridulatory patch. Protibia widening towards apex. Mesotibia in apical half with anterior face covered by fringe of long subrecumbent setae. Meso- and metatibia subbasally with dorsal angulation; metatibia with supra-uncal denticle. Abdominal ventrites 1–2 concave with coarse punctures bearing silvery plumose scales; ventrite 5 flat, densely punctate and covered with silvery scales. Penis (Fig. 3b) widening apicad, in apical third with constriction and oblique lateral furrow; apex subangulate, subglabrous; transfer apparatus symmetrical, contained in apical half of body; ductus ejaculatorius without bulbus. **Intraspecific variation.** Length 2.58–2.85 mm. Female mesotibia apically with large uncus and much smaller premucro. Female abdominal ventrites 1 and 2 medially flat.

**Material examined.** Holotype (ANIC): ARC4220 (GenBank # KU888900), PAPUA NEW GUINEA, West New Britain Prov.: E of Silali Village, Nakanai Range, S 05°30.651', E 151°02.895', 700 m, from foliage, 21-XI-2014. Paratypes (SMNK, ZSM, UPNG): 9 exx, ARC4218 (EMBL # KU888898), ARC4219 (GenBank # KU888899), ARC4221 (EMBL # XXX), same data as holotype.





**Figure 3.** *Trigonopterus puncticollis* Van Dam & Riedel, sp. n., holotype; **a** Dorsal habitus **b** Lateral habitus **c** Penis.

**Etymology.** This epithet is a Latin adjective based on a combination of the Latin nouns *punctum* (small hole, dot) and *collum* (neck) and refers to the markedly punctate pronotum.

**Notes.** This species may belong to the *T. oblongus*-group of Riedel et al. (2013b) in a wide sense.

***Trigonopterus silaliensis* Van Dam & Riedel, sp. n.**

<http://zoobank.org/C6C79A9A-0A51-4252-9603-AF408E46DF26>

**Diagnostic description.** **Holotype**, female (Fig. 4a–c). Length 3.02 mm. Color black; elytra with humeri and apical third dark ferruginous; antenna paler ferruginous. Body elongate; in dorsal aspect with marked constriction between pronotum and elytra; in profile dorsally flat. Rostrum basally with median and pair of submedian carinae; in apical half relatively smooth, with submedian row of punctures. Forehead coarsely punctate-rugose, with cream-colored, narrow scales directed backwards. Pronotum with sides convex, without subapical constriction; disk dorsally flat, punctate, at middle subglabrous, punctures sparse; anterolaterally punctures coarse, partly confluent; at middle of basal margin with small patch of dense, cream-colored recumbent scales. Elytra with striae distinct, dorsally with rows of small punctures, laterally with deep punctures; intervals flat, subglabrous; with small, scattered patches of cream-colored, recumbent scales. Legs. Femora edentate; coarsely punctate, with white, recumbent piliform scales. Profemur in basal third posteriorly with callus. Metafemur dorsally with white scales wider and more densely; subapically with stridulatory patch. Abdominal ventrites flat, with fine punctures bearing piliform scales. Genitalia. Fig. 4b.

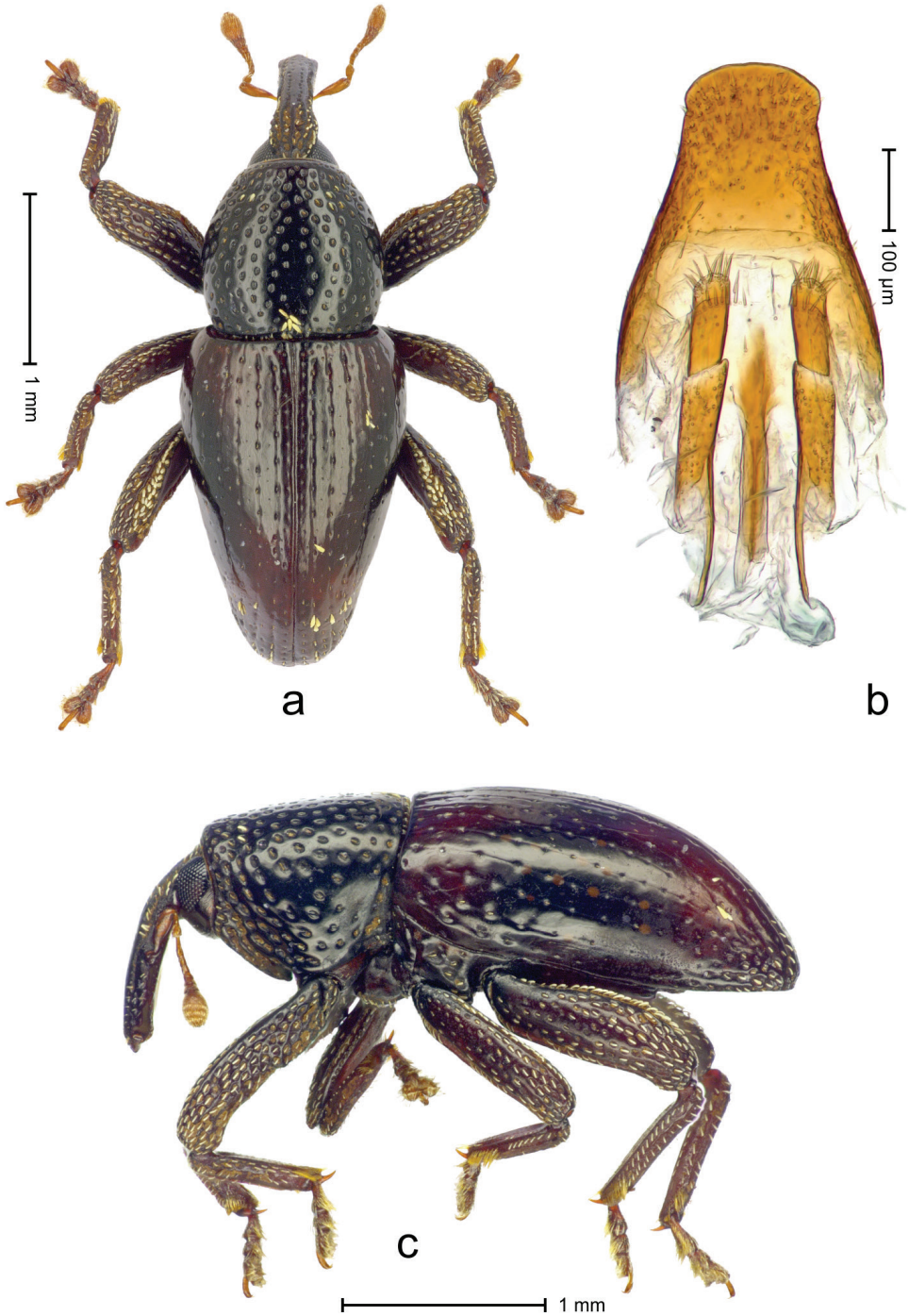
**Material examined.** Holotype (ANIC): ARC4214 (GenBank # KU888894), PAPUA NEW GUINEA, West New Britain Prov.: E of Silali Village, Nakanai Range, S05°31.233', E151°03.343', 800 m, from foliage, 21-22-XI-2014.

**Etymology.** This epithet is a Latin adjective based on the name of the village near to which the holotype was collected.

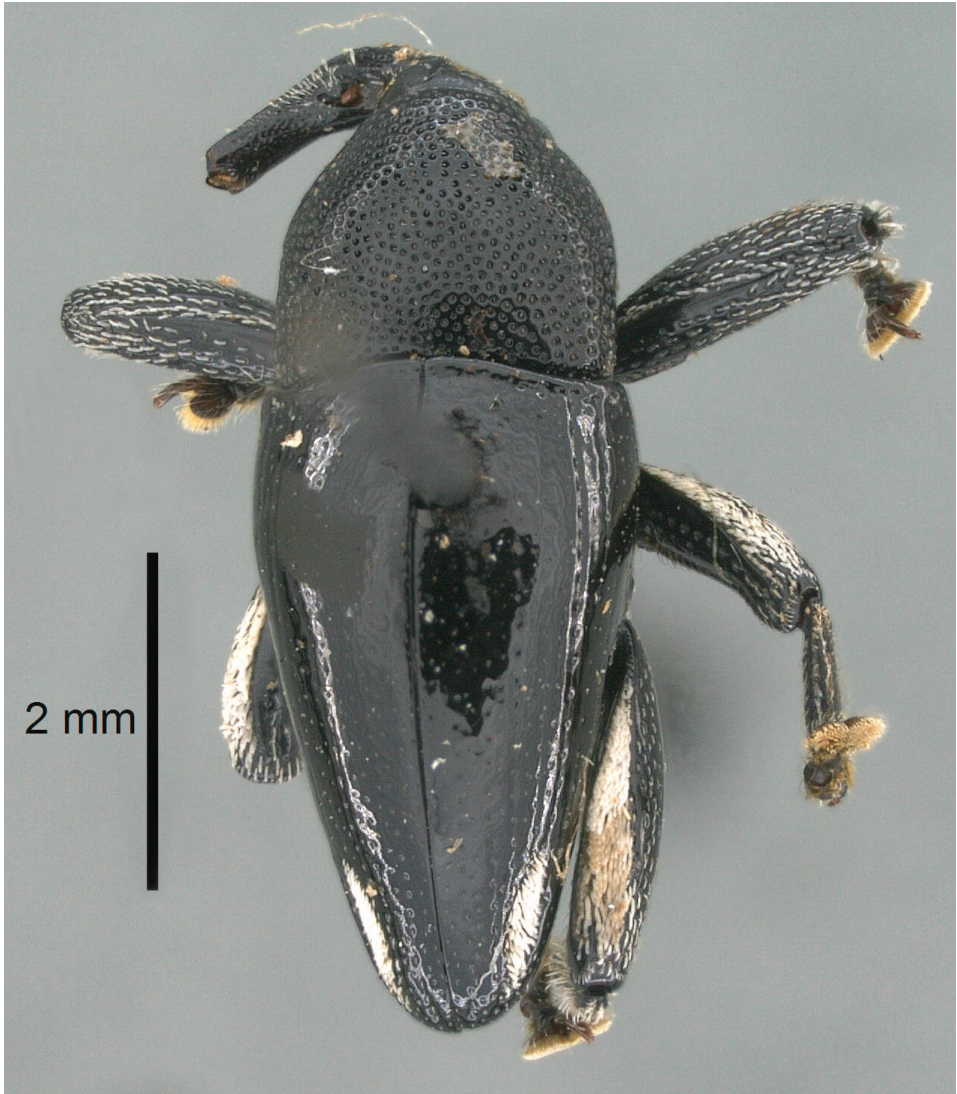
**Notes.** This species belongs to the *T. honestus*-group of Riedel et al. (2013b) and superficially resembles *T. paucisquamosus* (Heller) from the Philippines, which differs by the position of scale patches and a denser punctation.

**Key to the known *Trigonopterus* species of the Bismarck Archipelago of Papua New Guinea**

- 1 Species found on foliage. Pronotum subapically rounded, without distinct constriction.....2
- Species found in the litter layer. Pronotum subapically with distinct constriction and pair of angular projections (Fig. 1a–c) .....  
..... *T. chewbacca* Van Dam & Riedel, sp. n.



**Figure 4.** *Trigonopterus silaliensis* Van Dam & Riedel, sp. n., holotype; **a** Dorsal habitus **b** Lateral habitus **c** female genitalia.



**Figure 5.** *Trigonopterus pembedtoni* (Zimmerman), holotype. Dorsal habitus. Photo courtesy B.P. Bishop Museum.

- 2(1) Body larger, pronotum plus elytron ca. 5.63 mm. Elytron black, nude except subapically with elongate patch of white scales. Fig. 5..... *T. pembedtoni* (Zimmerman)
- Body smaller, pronotum plus elytron ca. 3.02–3.06 mm. Elytron without subapical patch of white scales. .... 3

- 3(2) Pronotum smooth, almost impunctate. Male mesotibia subapically with pre-mucro larger than uncus ..... *T. obsidianus* Van Dam & Riedel, sp. n.  
 – Pronotum densely punctate. Male mesotibia subapically with uncus; pre-mucro minute or absent ..... 4
- 4(3) Body elongate. Metafemur subapically with stridulatory patch .....  
 ..... *T. silaliensis* Van Dam & Riedel, sp. n.  
 – Body subovate. Metafemur without stridulatory patch .....  
 ..... *T. puncticollis* Van Dam & Riedel, sp. n.

## Discussion

The absence of a record of a weevil genus from a Melanesian island is often difficult to interpret, i.e. it is usually unclear whether this is based on a true absence or on a lack of records. Prior to this study, *Trigonopterus* was unknown from New Britain. The four species described here represent four different clades of *Trigonopterus*, indicating that the oceanic island of New Britain has been colonized at least four times, and *T. pembedtoni*, which occurs on neighboring New Ireland and represents the *T. oblongus*-group, brings the number of colonization events of *Trigonopterus* in the Bismarck Archipelago to five. Given the size, mountainous topography and tropical vegetation of New Britain, it is likely that *Trigonopterus* has undergone some local speciation on the island, but this possibility requires further investigation.

Despite many days of searching for *Trigonopterus* in primary forest on New Britain, the weevils were quite scarce in comparison with similar localities on the New-Guinean mainland. This scarcity may be due to the local conditions or seasonal effects, as orographic precipitation formed early in the day and continued into the evening during our stay. The specimens' habitat consisted of primary forest growing on a limestone karst.

## Acknowledgments

M.H.V.D. and R.L. were funded by NSF award DBI #1402102, and A.R. received support from the German Research Foundation, DFG (RI 1817/3-3). We thank J.H. Boone of the Bishop Museum for a picture of *T. pembedtoni* and M. Balke for his support during the part of the study carried out in the ZSM molecular laboratory. M.A. Alonso-Zarazaga, C.H.C. Lyal and R. Oberprieler reviewed the manuscript which led to many improvements. We are indebted to the PNG Department of Environment and Conservation for issuing an export permit and to the Binatang Research Center for providing help and advice during the field work, which would not have been possible without the generous hospitality and support of many local people, all of whom we thank very warmly.

## References

- Alonso-Zarazaga MA, Lyal CHC (1999) A world catalogue of families and genera of Curculionioidea (Insecta: Coleoptera) (excepting Scolytidae and Platypodidae). *Entomopraxis*, Barcelona, 315 pp.
- Besuchet C, Burckhardt DH, Löbl I (1987) The “Winkler/Moczarski” elector as an efficient extractor for fungus and litter Coleoptera. *The Coleopterists’ Bulletin* 41: 392–394.
- Fauvel A (1862) Coléoptères de la Nouvelle-Calédonie, recueillis par M. E. Déplanche, chirurgien de la marine impériale (1858-59-60). *Bulletin de la Société Linnéenne de Normandie* 7: 120–185.
- Heller KM (1916) Die Käfer von Neu-Caledonien und den benachbarten Inselgruppen. *Nova Caledonia – A: Zoologie* 2: 229–364.
- Marshall GAK (1931) Curculionidae. *Insects of Samoa and Other Samoan Terrestrial Arthropoda*, Part IV, Coleoptera, 5: 249–346.
- Riedel A (2005) Digital imaging of beetles (Coleoptera) and other three-dimensional insects. In: Häuser C, Steiner A, Holstein J, Scoble MJ (Eds) *Digital Imaging of Biological Type Specimens. A Manual of Best Practice. Results from a study of the European Network for Biodiversity Information*, Stuttgart, 222–250.
- Riedel A, Daawia D, Balke M (2010) Deep cox1 divergence and hyperdiversity of *Trigonopterus* weevils in a New Guinea mountain range (Coleoptera, Curculionidae). *Zoologica Scripta* 39(1): 63–74. doi: 10.1111/j.1463-6409.2009.00404.x
- Riedel A, Sagata K, Suhardjono YR, Tänzler R, Balke M (2013a) Integrative taxonomy on the fast track - towards more sustainability in biodiversity research. *Frontiers in Zoology* 10: 15. doi: 10.1186/1742-9994-10-15
- Riedel A, Sagata K, Surbakti S, Tänzler R, Balke M (2013b) One hundred and one new species of *Trigonopterus* weevils from New Guinea. *ZooKeys* 280: 1–150. doi: 10.3897/zookeys.280.3906
- Riedel A, Tänzler R, Balke B, Rahmadi C, Suhardjono YR (2014) Ninety-eight new species of *Trigonopterus* weevils from Sundaland and the Lesser Sunda Islands. *ZooKeys* 467: 1–162. doi: 10.3897/zookeys.467.8206
- Riedel A, Tänzler R (2016) Revision of the Australian species of the weevil genus *Trigonopterus* Fauvel. *ZooKeys* 556: 97–162. doi: 10.3897/zookeys.556.6126
- Tänzler R, Sagata K, Surbakti S, Balke M, Riedel A (2012) DNA barcoding for community ecology - how to tackle a hyperdiverse, mostly undescribed Melanesian fauna. *PLoS ONE* 7(1): e28832. doi: 10.1371/journal.pone.0028832
- van de Kamp T, Cecilia A, dos Santos Rolo T, Vagovič P, Baumbach T, Riedel A (2015) Comparative thorax morphology of death-feigning flightless cryptorhynchine weevils (Coleoptera: Curculionidae) based on 3D reconstructions. *Arthropod structure & Development* 44: 509–523. doi: 10.1016/j.asd.2015.07.004
- Zimmerman EC (1938a) *Idotasia* in New Ireland (Coleoptera, Curculionidae). *Proceedings of the Hawaiian Entomological Society* 10(1): 148–150.
- Zimmerman EC (1938b) *Idotasia* of Fiji (Coleoptera, Curculionidae). *Records of the South Australian Museum* 6(2): 163–168.