

РОССИЙСКАЯ АКАДЕМИЯ НАУК  
Южный научный центр

RUSSIAN ACADEMY OF SCIENCES  
Southern Scientific Centre



# Кавказский Энтомологический Бюллетень

CAUCASIAN ENTOMOLOGICAL BULLETIN

Том 15. Вып. 1

Vol. 15. No. 1



Ростов-на-Дону  
2019

**A new subspecies of longicorn beetles  
of the genus *Cortodera* Mulsant, 1863  
(Coleoptera: Cerambycidae) from Lebanon**

**Новый подвид жуков-усачей рода *Cortodera* Mulsant, 1863  
(Coleoptera: Cerambycidae) из Ливана**

© D.G. Kasatkin

© Д.Г. Касаткин

Rostov Branch of FSI "VNIICR", 20<sup>th</sup> line, 43/16, Rostov-on-Don 344018 Russia. E-mail: kassatkind@mail.ru  
Ростовский филиал ФГБУ «ВНИИКР», 20-я линия, 43/13, Ростов-на-Дону 344018 Россия

**Key words:** Coleoptera, Cerambycidae, *Cortodera*, new subspecies, Lebanon.

**Ключевые слова:** Coleoptera, Cerambycidae, *Cortodera*, новый подвид, Ливан.

**Abstract.** *Cortodera orientalis nigripecta* subsp. n., a new subspecies of *Cortodera orientalis* Adlbauer, 1988 (described from Southern Turkey, Osmaniye Province) is described from Northern Lebanon (Akkar, Fnaydek village, Ezer Forest). The new subspecies differs from the nominotypical one by the coloration of a male (black elytra, while *Cortodera orientalis orientalis* has thatch-yellow elytra), denser pubescence of the pronotum and a shape of the aedeagus. Shape of apex of penis is wider in new subspecies, lateral lobes slender than in the nominative subspecies. The new subspecies inhabits middle-mountain forest zone. Imagoes of the subspecies were collected on flowers shrubs *Berberis libanotica*.

**Резюме.** Описан новый подвид, *Cortodera orientalis nigripecta* subsp. n., из Северного Ливана (Аккар, село Фнайдек, лес Эзер). Новый подвид отличается от описанного из Южной Турции (провинция Османие) номинативного подвида окраской самцов (черные надкрылья в отличие от соломенно-желтых у номинативного подвида), более густым и ярким опушением переднеспинки, формой эдеагуса. Обитает новый подвид в среднегорном поясе в лесной зоне, имаго встречаются на цветущих кустарниках *Berberis libanotica*.

According to some last publications [Sama et al., 2010; Coccempot et al., 2016; Danilevsky, Nemeth, 2017] four species of longicorn beetles of the genus *Cortodera* Mulsant, 1863 from different species group are distributed in Lebanon: *C. colchica libanensis* Danilevsky, 2017, *C. syriaca syriaca* Pic, 1901, *C. cfr. flavimana* (Waltl, 1838), *C. vicina* Pic, 1914. A new longhorn subspecies of the genus *Cortodera* Mulsant, 1863 from Lebanon is described below.

*Cortodera orientalis nigripecta* subsp. n.  
(Figs 1–4)

**Material.** Holotype, ♂ (author's collection): Lebanon, Akkar, Fnaydek vill., Ezer Forest, on *Berberis libanotica*, 23.05.2018 (leg. D.G. Kasatkin).

Paratypes: 10♂, 3♀ (author's collection), 13♂, 7♀ (collection of A.S. Zubov, Moscow, Russia), 1♂, 1♀ (collection of the Lebanese University, Beirut) with the same labels.

**Description.** Male. Body length 9.7–10.5 mm. Body black, epipleura brown, humeral margin dark brown; femora and tibia entirely red or femora darkened in apical half and tibia black at apex (one specimen has entirely black mesotibiae), sometimes femora apically darkened; tarsi black or reddish. Coloration of antennae variable: usually antennomeres 1–4 fully reddish, 5 partly reddish, others with basal light ring, maxillary palpomeres 1 and 2 red, 3 black.

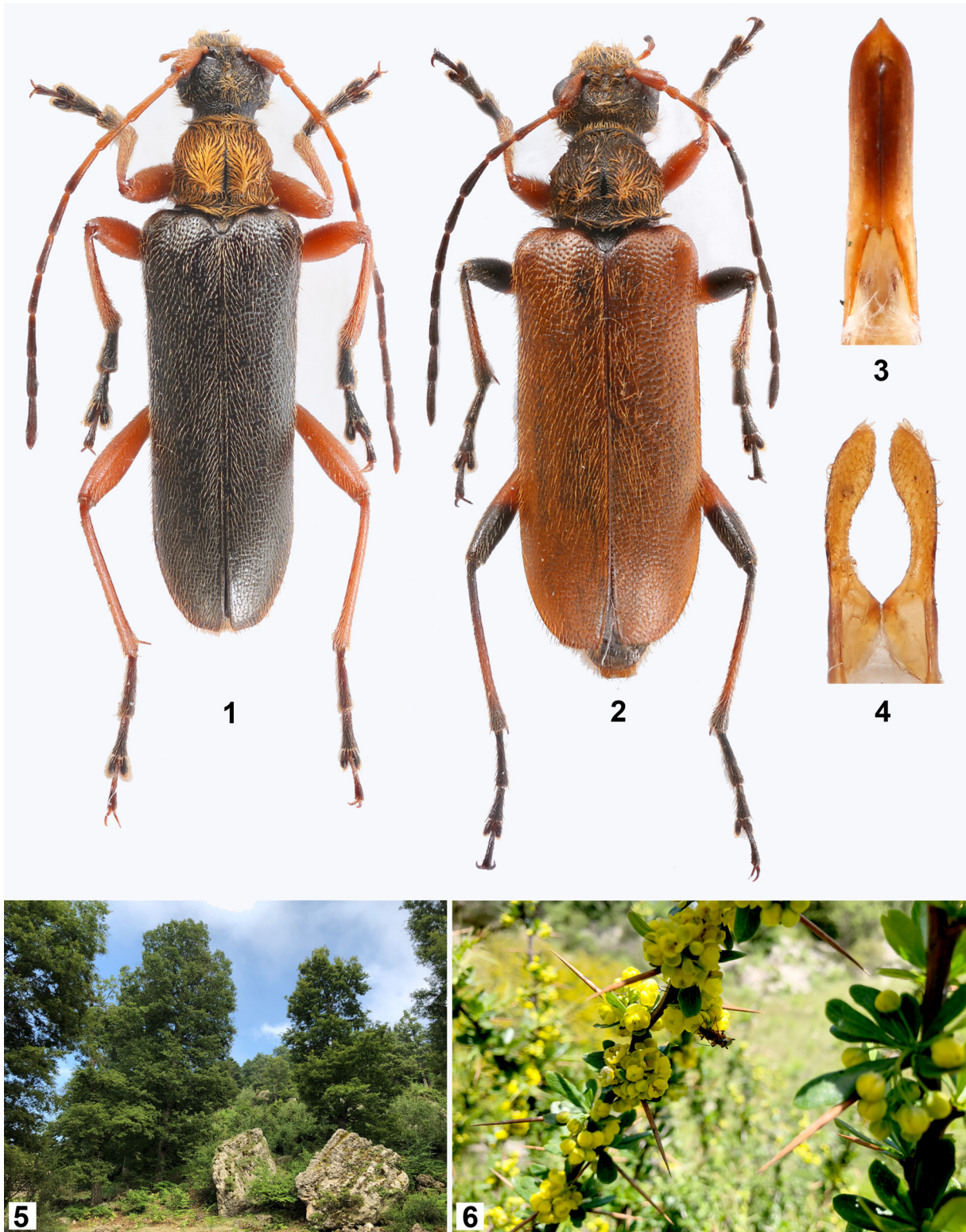
Head with not coarse and moderately dense punctures, covered with very dense bright orange hairs. Temples well developed, rectangular. Antennae reaching apical elytral quarter, antennomere 2 1.66 times longer than wide, antennomere 3 longer than 4 and equal to 5.

Pronotum large and densely punctured, bell-shaped, with glabrous shining line at middle; very densely covered with orange pubescence, which forms rows on sides of glabrous line, with some erect hairs.

Elytra elongate, 2.65–2.8 as long as wide (at basal level), slightly widened or parallel-sided at humeral level, 4–4.26 times as long as pronotum, finely and densely punctured, with lead shine, slightly truncated at apex; elytral pubescence sparse, fine and light, with semierect hairs at base.

Female. Body more robust, body length 10–11 mm. Legs red anteriorly (excluding tarsi), meso- and metatibiae black or red, meso- and metafemora red at apical half; elytra entirely yellow, antennae shorter (reaching apical elytral third). Elytra 2.32 times as long as wide (at basal level), 4 times as long as pronotum.

**Differential diagnosis.** The new subspecies differs from the nominotypical one (described from Southern Turkey, Osmaniye/Gaziantep provinces [Adlbauer, 1988]) in the black male elytra (thatch-yellow male elytra in the nominotypical subspecies) and denser pronotal pubescence. Apex of penis in the new subspecies is wider, lateral lobes slender than in the nominotypical subspecies (Figs 3, 4). *Cortodera orientalis didemae* Özdikmen, 2016 from Mardin described by one specimen differs from *C. orientalis nigripecta* subsp. n. by denser elytral puncturation, fully yellow tarsi and more light antennae. Sex of the holotype of *C. orientalis didemae* was indicated



Figs 1–6. *Cortodera orientalis nigripta* subsp. n., habitat and host plant of imago.

1, 3–4 – male, holotype; 2 – female, paratype. 1–2 – habitus; 3 – penis, ventral view; 4 – lateral lobes; 5 – habitat, the forest in Fnaydek village, Lebanon; 6 – beetles on flowers of the host plant *Berberis libanotica*. Photos 5–6 by A.S. Zubov.

Рис. 1–6. *Cortodera orientalis nigripta* subsp. n., местообитание и кормовое растение имаго.

1, 3–4 – самец, голотип; 2 – самка, паратип. 1–2 – внешний вид; 3 – пенис (вентральная поверхность); 4 – параметры; 5 – местообитание, лес в поселке Фнайдек, Ливан; 6 – жуки на цветах кормового растения *Berberis libanotica*. Фотографии 5–6 А.С. Зубова.

as a male, but proportions of body and length of antennae indicate that it is a female. According to preliminary opinion of M. Danilevsky [<https://www.zin.ru/ANIMALIA/COLEOPTERA/RUS/ozdpdf18.htm>], *C. orientalis didemae* is a subspecies of *Cortodera syriaca* Pic, 1901.

**Bionomics.** All beetles were collected on *Berberis libanotica* flowers (Figs 5, 6).

**Etymology.** The name *nigriptera* (Latin “nigra” and ancient Greek πτερά (pterá)) means black wing.

### Acknowledgements

The author is grateful to Prof. D. Azar (Lebanese University, Beirut, Lebanon) for his great assistance in our expedition and to A.S. Zubov (Moscow, Russia) for the provided material and photo of habitat.

### References

- Adlbauer K. 1988. Neues zur Taxonomie und Faunistik der Bockkaferfauna der Türkei (Coleoptera, Cerambycidae). *Entomofauna zeitschrift für entomologie*. 9(12): 257–300.
- Cocquemot Ch., Nemer N., Brustel H., Taniou Ch. 2016. Nouvelles données et nouveau catalogue des Coléoptères Cerambycidae du Liban (Coleoptera, Cerambycoidea). *Bulletin de la Société entomologique de France*. 121(1): 91–104.
- Danilevsky M.L. H. Oezdikmen. 2016. Two new species group taxa of *Cortodera* (Cerambycidae: Lepturinae) from Turkey... *Beetles (Coleoptera) and Coleopterists*. Available at: <https://www.zin.ru/ANIMALIA/COLEOPTERA/RUS/ozdpdf18.htm> (accessed 22 May 2019).
- Danilevsky M.L., Németh T. 2017. A new subspecies of *Cortodera colchica* (Faldermann, 1836) from Lebanon (Coleoptera, Cerambycidae). *Humanity space. International almanac*. 6(5): 837–842.
- Sama G., Rapuzzi P., Kairouz A. 2010. Catalogue commenté des Cerambycidae du Liban. *Luaderno di Studi e Notizie di Storia Naturale della Romagna*. 30: 131–201.

Received / Поступила: 25.03.2019

Accepted / Принята: 6.06.2019