

## Leaf beetles (Coleoptera: Chrysomelidae) of the Kuznetsk-Salair Mountain Area (Russia, Siberia). Part One: Subfamilies Donaciinae, Criocerinae, Cassidinae and Chrysomelinae

ELENA V. GUS'KOVA

*Altai State University, Lenina 61, Barnaul, RU–656049, Russia*  
*guskovael@mail.ru*

DMITRIY A. EFIMOV

*Kemerovo State University, Krasnaya Street 6, Kemerovo, RU–650043, Russia*  
*efim\_d@mail.ru*

ANDREY A. ATUCHIN

*Druzhbi 17–158, Kemerovo, RU–650040, Russia*  
*aatuch@yandex.ru*

### Synopsis

A check-list of Chrysomelidae (Donaciinae, Criocerinae, Cassidinae, Chrysomelinae) of the Kuznetsk-Salair Mountain Area is provided. Currently, 97 species belonging to 25 genera of these subfamilies are recorded. Accurate localities for each species are indicated.

**Key words:** Chrysomelidae, Coleoptera, fauna, Kemerovo region, Kuznetsk-Salair Mountain Area, leaf beetles, Siberia.

### Introduction

Leaf beetles (Coleoptera, Chrysomelidae) are one of the biggest Coleoptera families of the world fauna including about 32500 species belonging to 2114 genera (Slipinski, Leschen & Lawrence, 2011). On the territory of Siberia 403 Chrysomelidae species are recorded (Lopatin, Aleksandrovich & Konstantinov, 2004). The study of their local fauna in the Asian part of Russia is very poor. This statement is also valid for the territory of Kuznetsk-Salair Mountain Area. One of the first lists of leaf beetles in Kemerovo region was the list of Alticinae published by Kostromitin (1965) and then the abstract of his thesis (Kostromitin, 1967). These works mention 53 flea beetle species, but neither the exact location of the species, not the place of the material depository is specified. In 1995–96 Mikhailov examined leaf beetles of the highest part of Kuznetsky Alatau from Skalistye Gory range to Tigirtish range, but only short notes were published (Mikhailov, 1996; 2001). In the beginning of the XXI century the study of leaf beetles in this region continued. The endemic species of Kuznetsky Alatau *Chrysolina (Pleurosticha) arctoalpina* Mikhailov, 2006 was described and rare species *Chrysolina eurina* and *Cryptocephalus zejensis* were found in the Kemerovo region (Mikhailov, 2006; Mikhailov & Atuchin, 2006; Atuchin, 2008a). Later on the list of 179 leaf beetle species was issued, however without indication of accurate localities (Atuchin, 2008b). Mikhailov (2009) thoroughly examined the synonymy of Siberian *Chrysolina* and reported several species for Kemerovo region as well as the poorly studied rare species *Oreothassa martjanowi* Jacobson, 1901 for several localities in Kuznetsky Alatau and Gornaya Shoria. In the subsequent field studies, the entomologists from Kemerovo have found 24 leaf

beetle species which were previously not known in Kemerovo region (Gus'kova, Efimov & Korshunov, 2016). The present study provides for the first time a check-list of Chrysomelidae (Donaciinae, Criocerinae, Cassidinae, Chrysomelinae) of the Kuznetsk-Salair Mountain Area claiming to be complete, with precise data on localities.

### Materials and methods

The article is based on the examination of leaf beetles specimens collected from 1998 to 2017 in 108 localities of Kuznetsk-Salair Mountain Area. The beetles were collected using standard methods: manual gathering and mowing with sweep nets. The material from the following collections has been examined:

- AACK – Andrey Atuchin Collection, Kemerovo, Russia;
- ABCZ – Andrey Benkovskiy Collection, Zelenograd, Russia;
- DECK – Dmitriy Efimov Collection, Kemerovo, Russia;
- EGCB – Elena Gus'kova Collection, Barnaul, Russia;
- IZCS – Iliya Zabaluev Collection, Saratov, Russia;
- KSUC – Kemerovo State University Collection, Kemerovo, Russia;
- ZIN – Zoological Institute of Russian Academy of Sciences, St Petersburg, Russia.

#### List of collecting localities (Fig. 1)

Localities 1–77 and 89–108 refer to Kemerovo region.

KUZNETSK DEPRESSION: 1) **Anzhero-Sudzhensk** – Anzhero-Sudzhensk, 56°05' N 86°02' E; 2) **Pacha** – Yashkinsky distr., Pacha, Tom River Valley, 55°42' N 85°29' E; 3) **Kolmogorovo** – Yashkinsky distr., Kolmogorovo vill., 55°37' N 85°40' E; 4) **Topki** – Topkinsky distr., Topki vill., 55°17' N 85°37' E; 5) **Ust-Sosnovo** – Topkinsky distr., Ust-Sosnovo vill., 55°13' N 84°59' E; 6) **Maly Korchugan** – Topkinsky distr., Maly Korchugan vill., 55°14' N 85°35' E; 7) **Katkovo** – Topkinsky distr., Katkovo vill., 55°08' N 85°03' E; 8) **Tsyipino** – Topkinsky distr., Tsyipino vill., 55°08' N 85°29' E; 9) **Pinigino** – Topkinsky distr., Pinigino vill., 55°04' N 85°58' E; 10) **Razvedchik** – Kemerovsky distr., Razvedchik vill., 55°44' N 86°09' E; 11) **Krasnaya** – Kemerovsky distr., Krasnaya vill., Tom Valley, 54°36' N 85°22' E; 12) **Izvestkovy** – Kemerovsky distr., Izvestkovy vill., 55°35' N 85°45' E; 13) **Podyakovo** – Kemerovsky distr., Podyakovo vill., 55°33' N 85°49' E; 14) **Staraya Balakhonka** – Kemerovsky distr., Staraya Balakhonka vill., 55°32' N 85°53' E; 15) **Krekovo** – Kemerovsky distr., Krekovo vill., 55°31' N 85°52' E (Fig. 2); 16) **Zvezdny** – Kemerovsky distr., Zvezdny vill., 55°27' N 85°50' E; 17) **Mozzhukha** – Kemerovsky distr., Mozhzhukha vill., 55°25' N 85°56' E; 18) **Osinovka** – Kemerovsky distr., Osinovka vill., 55°23' N 86°18' E; 19) **Zhuravlevo (K)** – Kemerovsky distr., near Zhuravlevo vill., 55°22' N 86°14' E; 20) **Sukhovo** – Kemerovsky distr., Sukhovo vill., 55°22' N 85°13' E; 21) **Kemerovo** – Kemerovsky distr., Kemerovo, 55°21' N 86°05' E; 22) **Tebenkovka** – Kemerovsky distr., 5–7 km Tebenkovka vill., 55°21' N 86°22' E; 23) **Mazurovo** – Kemerovsky distr., Mazurovo vill., 55°19' N 85°53' E; 24) **Silino** – Kemerovsky distr., Silino vill., 55°16' N 86°18' E; 25) **Berezovo** – Kemerovsky distr., near Berezovo vill., 55°14' N 86°14' E; 26) **Sukhaya Rechka** – Kemerovsky distr., Sukhaya Rechka, 55°14' N 86°06' E; 27) **Yagunovo** – Kemerovsky distr., Yagunovo vill., 55°14' N 86°00' E; 28) **Maruchak** – Kemerovsky distr., Maruchak, 55°08' N 86°05' E; 29) **Beregovaya** – Kemerovsky distr., Beregovaya vill., Tom River, 55°08' N 86°00' E; 30) **Tom River** – Kemerovsky distr., 52 km SSE Kemerovo, Tom River, island, 55°07' N 86°26' E; 31) **Pyanowo** – Promyshlennovsky distr., Pyanowo vill., 54°55' N 85°17' E; 32) **Fedorovo Lake** – Promyshlennovsky distr., near Kaltyshino vill., Fedorovo Lake, 54°49' N 85°07' E; 33) **Tanaevo Lake** – Promyshlennovsky distr., Zhuravlevo vill., Tanaevo Lake, 54°47' N 85°04' E; 34) **Inya valley** – Promyshlennovsky distr., Inya valley; 35) **Dmitrievka** – Kemerovsky distr., Dmitrievka vill., 55°37' N 86°23' E; 36) **Berezovka** – Krapivinsky distr., Berezovka vill., 55°08' N 86°31' E; 37) **Taradanovo** – Krapivinsky distr., Taradanovo vill., 54°44' N 86°41' E;

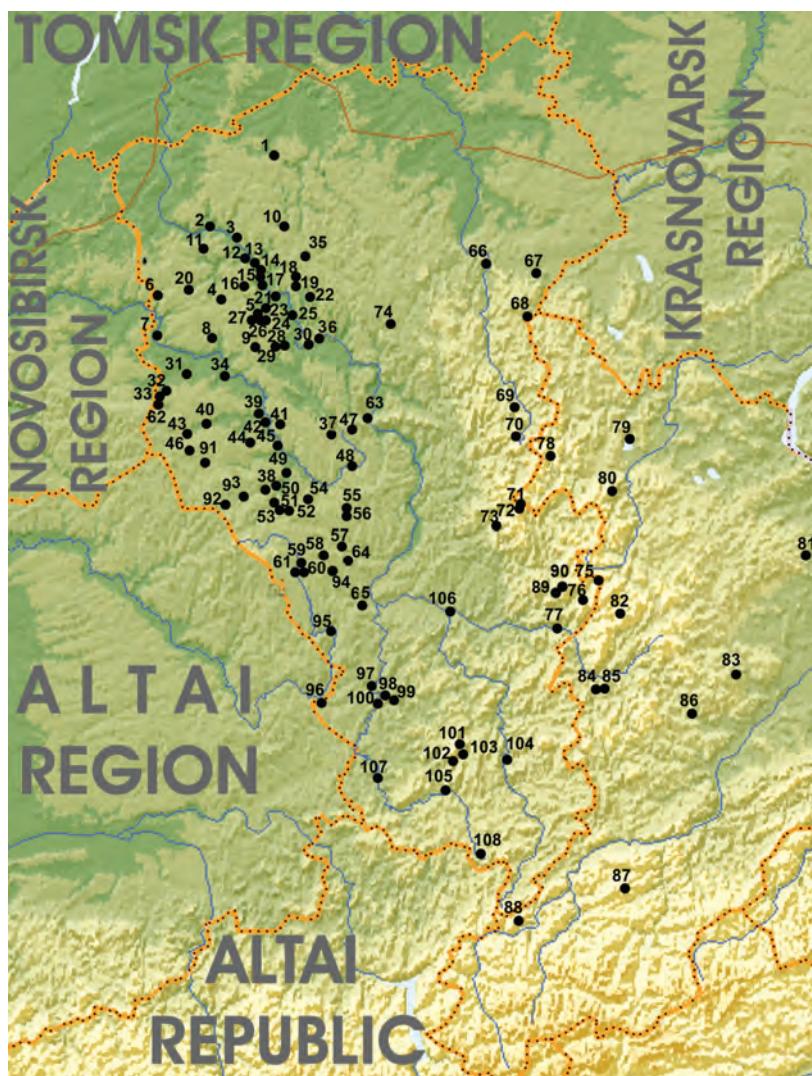


Fig. 1. Localities of collecting Chrysomelidae in the Kuznetsk-Salair Mountain Area.

38) **Shanda** – Gurevsky distr., Shanda vill., 54°19' N 86°04' E (Fig. 3); 39) **Sapogovo** – Leninsk-Kuznetsky distr., Sapogovo vill., 54°43' N 86°01' E; 40) **Shabanovo** – Leninsk-Kuznetsky distr., Shabanovo vill., 54°40' N 85°32' E; 41) **Krasnoyarka** – Leninsk-Kuznetsky distr., Krasnoyarka vill., 54°39' N 86°19' E; 42) **Leninsk-Kuznetsky** – Leninsk-Kuznetsky distr., Leninsk-Kuznetsky, 54°39' N 86°10' E; 43) **Krasnoye Selo** – Leninsk-Kuznetsky distr., Krasnoye Selo vill., 54°36' N 85°22' E; 44) **Mirny** – Leninsk-Kuznetsky distr., Mirny vill., 54°36' N 85°55' E; 45) **Polysaevo** – Leninsk-Kuznetsky distr., Polysaevo vill., 54°36' N 86°17' E; 46) **Kokuj** – Leninsk-Kuznetsky distr., near Kokuj vill., 54°34' N 85°22' E; 47) **Karakan Range** – Belovsky distr., Karakan Range (btwn Karakany & Permyaki vill.) 54°38' N 86°89' E; 48) **Permyaki** – Belovsky distr., Karakan Range, Permyaki vill., 54°27' N 86°55' E; 49) **Belovo** – Belovsky distr., 10 km W Belovo vill., 54°25' N 86°18' E; 50) **Bekovo** – Belovsky

distr., Bekovo vill., 54°21' N 86°11' E; 51) **Bachatsky coal cut** – Belovsky distr., Bachatsky coal cut, 54°16' N 86°09' E; 52) **Novy Gorodok** – Belovsky distr., near Novy Gorodok vill., Bachatskie sopki, 344 m, 54°15' N 86°16' E; 53) **Starobachaty** – Belovsky distr., Starobachaty vill., 54°14' N 86°12' E; 54) **Krasnobrodsky** – Belovsky distr., near Krasnobrodsky vill., 54°09' N 86°32' E; 55) **Majsky** – Prokopevsky distr., 2 km SE Majsky vill., 54°18' N 86°50' E; 56) **Oktyabrsky** – Prokopevsky distr., 7 km NE Oktyabrsky vill., 54°15' N 86°46' E; 57) **Krivoy Uskat River** – Prokopevsky distr., near Uskatsky vill., Krivoy Uskat River, 54°05' N 86°49' E; 58) **Prokopyevsk** – Prokopyevsky distr., Prokopyevsk, 53°53' N 86°43' E; 59) **Novostrojka** – Prokopyevsky distr., 7 km SW Novostrojka vill., 53°51' N 86°29' E; 60) **Smyshlyaevo** – Prokopyevsky distr., Smyshlyaevo vill., 53°49' N 86°35' E; 61) **Chistugash** – Prokopyevsky distr., Chistugash vill., 53°49' N 86°31' E; 62) **Zhuravlevo** – Promyshlennovsky distr., 4 km NW Zhuravlevo vill., 54°47' N 85°03' E; 63) **Azhendarovo** – Krapivinsky distr., 8 km SSW of Saltymakovo vill., the Azhendarovo research biological Station of Kemerovskiy State University and its vicinity, 54°45' N 87°01' E; 64) **Luchshevo** – Prokopyevsky distr., Luchshevo vill., 53°51' N 86°55' E; 65) **Novokuznetsk** – Novokuznetsky distr., Novokuznetsk, 53°44' N 87°05' E.

KUZNETSKY ALATAU: 66) **Makarasky** – Tisulsky distr., near Makarasky vill., Kiya river (right bank) 55°35' N 88°02' E; 67) **Tambar** – Tisulsky distr., Tambar vill., Dudet River (right bank), 55°35' N 88°37' E; 68) **Polutornik** – Tisulsky distr., 10 km N Polutornik, 55°19' N 88°28' E; 69) **Barkhatny Range** – Tisulsky distr., Barkhatny Range, Kiya River, 54°52' N 88°18' E; 70) **Chemodan Mt.** – Novokuznetsky distr., Nizhnyaya Ters River, Chemodan Mt., 54°42' N 88°23' E; 71) **Cherny Voron Mt.** – Novokuznetsky distr., middle reaches of Verkhnyaya Ters River., Cherny Voron Mt., 54°21' N 88°27' E; 72) **Rybnoye Lake** – Novokuznetsky distr., Rybnoye Lake, 54°20' N 88°25' E; 73) **Shat River** – Novokuznetsky distr., Shat River, 54°15' N 88°16' E; 74) **Kamennaya Mt.** – Novokuznetsky distr., Kamennaya Mt., 55°12' N 87°11' E; 75) **Belsu River** – Mezhdurechensky distr., Belsu River 53°56' N 89°10' E; 76) **Tigirtish Range** – Mezhdurechensky distr., Tigirtish Range, upper reaches of the Nizhny Tayzhasu, 53°52' N 89°04' E; 77) **Luzhba** – Mezhdurechensky distr., Luzhba vill., 53°39' N 88°52' E; 78) **Bobrovaya Mt.** – Khakassia, Ordzhonikidzevsky distr., Bobrovaya Mt., 54°34' N 88°41' E; 79) **30 km NW Chernoye Ozero** – Khakassia, Shirinsky distr., 30 km NW Chernoye Ozero vill., 54°41' N 89°25' E; 80) **Kommunar** – Khakassia, Shirinsky distr., 1 km S Kommunar vill., 54°20' N 89°17' E; 81) **Abakan Range** – Khakassia, Bogradsky distr., Abakan Range, near the cave 'Borodino' 54°03' N 91°04' E; 82) **Bolshoy Zub Mt.** – Khakassia, Tigirtish Range, Bolshoy Zub Mt., 53°47' N 89°02' E; 83) **Balankul Lake** – Khakassia, Ust-Abakansky distr., Balankul Lake, 53°27' N 90°24' E; 84) **Balyksa** – Khakassia, Askizsky distr., 11 km NE Balyksa, 53°24' N 89°07' E; 85) **Terensug River** – Khakassia, Askizsky distr., 8 km from Balyksa vill., Terensug River, 53°24' N 89°09' E; 86) **Kazanovka** – Khakassia, Askizsky distr., Abakan Range, Kazanovka vill., 53°12' N 90°02' E; 87) **Shaman Range** – Khakassia, Tashtypsky distr., Shaman Range, 52°18' N 89°26' E; 88) **Choochek Mt.** – Khakassia, Abakansky distr., Choochek Mt., 52°5' N 88°31' E; 89) **Kugutu Mt.** – Novokuznetsky distr., Kugutu Mt., 53°50' N 88°52' E; 90) **Dvuglavaya Mt.** – Novokuznetsky distr., Dvuglavaya Mt., 53°54' N 89°03' E.

SALAIR RIDGE: 91) **Gorskino** – Gurevsky distr., 3 km W Gorskino, 54°27' N 85°37' E; 92) **Salair** – Gurevsky distr., Salair vill., 54°14' N 85°48' E; 93) **7 km SW Guryevsk** – Guryevsky distr., 7 km SW Guryevsk, 54°17' N 85°56' E; 94) **Karaul Mt.** – Prokopyevsky distr., Karaul Mt., 53°52' N 86°45' E; 95) **Kostenkovo** – Novokuznetsky distr., Kostenkovo vill., 53° 51' N 88°52' E (Fig. 4); 96) **Sary-Chumysh** – Novokuznetsky distr., Sary-Chumysh vill., 53°14' N 86°43' E.

GORNAYA SHORIA: 97) **Kuzedeevo** – Novokuznetsky distr., Kuzedeevo vill., M. Tesh valley, 53°20' N 87°11' E; 98) **Podkatun** – Novokuznetsky distr., Podkatun, Podkatun Utesy, 53°16' N 87°16' E; 99) **Telbes** – Tashtagolsky distr., Telbes vill., 53°13' N 87°22' E; 100) **Mundybash** – Tashtagolsky distr., Mundybash vill., 53°12' N 87°16' E; 101) **Mustag Mt.** – Tashtagolsky distr., Mustag Mt., 1350 m, Shorsky Range, 53°00' N 87°57' N (Fig. 5); 102) **Zelenaya Mt.** – Tashtagolsky distr., 4 km N Sheregesh, Zelenaya Mt., 52°56' N 87°55' E; 103)

**Sheregesh** – Tashtagolsky distr., Sheregesh, 52°55' N 87°59' N; 104) **Ust-Kabyrza** – Tashtagolsky distr., 2 km S of Ust-Kabyrza vill., 52°49' N 88°26' E; 105) **Tashtagol** – Tashtagolsky distr., Tashtagol, 52°46' N 87°52' E; 106) **Mrassu Floodplain** and **Mrassu Mouth River** – Tashtagolsky distr., Mrassu Floodplain, 53°44' N 87°47' E; 107) **Kondoma River** – Tashtagolsky distr., Kondoma River (right bank), 52° 54' N 87°13' E; 108) **Verkhny Taymet** – Tashtagolsky distr., Verkhny Taymet vill., 52°29' N 88°17' E.

The status and systematic order of taxa arrangement in the annotated list is given according to the *Catalogue of Palaearctic Coleoptera* (2010).

### Physical and geographical characteristics of the region

The Kuznetsk-Salair Mountain Area occupies the extreme North-western part of the mountains in Southern Siberia. With respect to the environmental conditions, the area is divided into 4 regions: the Kuznetsk Depression, Salair Ridge, Kuznetsky Alatau and Gornaya Shoria (Mikhailov, 1961). The climate of Kuznetsk-Salair Mountain Area is sharply continental.

The vegetation cover of the Kuznetsk basin is dominated by steppe and forest-steppe. The mountainous provinces of the Kuznetsk-Salair region are mostly covered with mountain taiga, with the predominance of Siberian fir, Siberian cedar, spruce. The subalpine-tundra belt is the most developed in Kuznetsk Alatau, it includes mountain tundra, subalpine and alpine meadows (Kuminova, 1950).

### An annotated list of the Chrysomelidae (Donaciinae, Criocerinae, Cassidinae, Chrysomelinae) fauna of the Kuznetsk-Salair Mountain Area

In the present paper we provide an annotated list of the Chrysomelidae from the Kuznetsk-Salair Mountain Area. When compiling the list we also resorted to published literature data of other researchers workers.

**DONACIINAE** Kirby, 1837

**DONACIINI** Kirby, 1837

**DONACIA** Fabricius, 1775

***D. aquatica*** (Linnaeus, 1758)

**Material examined.** KUZNETSK DEPRESSION: Novokuznetsk, 12.vi.1907, 1 ex. (ZIN); Podyakovo, 08.vii.1983 (DECK); Podyakovo, 05.vii.1997, 1 ex. (*A. Korshunov*) (DECK); Shabanovo, 02.vii.1998, 1 ex. (*L. Slesarenko*) (DECK); Prokopyevsk, vi.1999, 1 ex. (*A. Atuchin*) (AACK); Azhendarovo, 04.vii.2001, 1 ex. (*N. Teplova*) (DECK); Smyshlyaev, 16.vi.2005, 3 ex. (*A. Atuchin*) (AACK); Berezovo, 03.vii.2013, 1 ex. (*D. Efimov*) (DECK); Azhendarovo, 01–05.vi.2014, 7 ex. (*A. Korshunov*) (EGCB); SALAIR RIDGE: Salair, 20.vi.1895, 1 ex. (ZIN); GORNAYA SHORIA: Mrassu Mouth River, 06.vi.1908, 1 ex. (*Khvorov*) (ZIN).

**Literature data.** KUZNETSKY ALATAU: Kuznetsk Alatau Nature Reserve (Cadastral..., 2017).

**Distribution.** Russia: European part, S Ural, W and E Siberia, Far East. – Europe, Caucasus, Turkey, Iran, China (Hebei), Japan.

***D. bicolora*** Zschach, 1788

**Material examined.** KUZNETSK DEPRESSION: Shabanovo, 08.vii.1995, 2 ex. (*A. Atuchin*) (AACK); Yagunovo, 04.vii.1999, 1 ex. (KSUC); Azhendarovo, 01–05.vi.2014, 2 ex. (*A. Korshunov*) (EGCB).

**Literature data.** KUZNETSKY ALATAU: Kuznetsk Alatau Nature Reserve (Cadastral..., 2017).

**Distribution.** Russia: European part, S Ural, W and E Siberia. – Europe, Kazakhstan, Caucasus, Turkey, Iran, Israel, Uzbekistan, Kyrgyzstan.



*Photo: D. Efimov*

**Fig. 2.** Kemerovsky distr., Krekovo vill., 55°31' N 85°52' E.



*Photo: D. Efimov*

**Fig. 3.** Gurevsky distr., Shanda vill., 54°19' N 86°04' E.



**Fig. 4.** Novokuznetsky distr., Kostenkovo vill., 53°37' N 86°49' E.

*Photo:* D. Sushchev



**Fig. 5.** Tashtagolsky distr., Mustag Mt., 1350 m, Shorsky Range, 53°00' N 87°57' E.

*Photo:* D. Sushchev

***D. crassipes*** Fabricius, 1775

**Material examined.** KUZNETSK DEPRESSION: Azhendarovo, 11–23.vii.2008, 2 ex. (*A. Korshunov*) (DECK); Azhendarovo, 26.vii.2008, 2 ex. (*D. Efimov*) (EGCB); Azhendarovo, viii.2009, 1 ex. (*N. Teplova*) (EGCB); Azhendarovo, 01–05.vi.2014, 1 ♂ (*A. Korshunov*) (EGCB).

**Literature data.** KUZNETSKY ALATAU: Kuznetsk Alatau Nature Reserve (Cadastral..., 2017).

**Distribution.** Russia: European part (from the taiga to the semi-desert zone), S Ural, W and E Siberia. – Europe, Kazakhstan (N and Central part), China (Gansu, Hebei, Shaanxi, Shanxi).

***D. dentata*** Hoppe, 1795

**Material examined.** SALAIR RIDGE: Sary-Chumysh, vi.2002, 2 ex. (*A. Atuchin*) (AACK).

**Literature data.** KUZNETSKY ALATAU: Kuznetsk Alatau Nature Reserve (Cadastral..., 2017).

**Distribution.** Russia: European part (except for the extreme North), W Siberia. – Europe, E Kazakhstan, W Mongolia.

***D. fennica*** Paykull, 1800

**Material examined.** KUZNETSK DEPRESSION: Zhuravlevo, 29.vi.2006, 2 ex. (*E. Konovaltsev*) (DECK); Tanaevo Lake, 30.vi.2006, 2 ex. (*D. Sidorov*) (EGCB); SALAIR RIDGE: Zhuravlevo, 02.vii.2006, 1 ex. (*A. Atuchin*) (AACK).

**Literature data.** KUZNETSKY ALATAU: Kuznetsk Alatau Nature Reserve (Cadastral..., 2017).

**Distribution.** Russia: European part (N and middle part), S Ural, W and E Siberia, Far East (Amur Region). – N Europe.

***D. obscura*** Gyllenhal, 1813

**Literature data.** KUZNETSKY ALATAU: The southern part of the western macroslope [Skalistye Gory range] (Mikhailov, 1996); Kuznetsk Alatau Nature Reserve (Cadastral..., 2017).

**Distribution.** Russia: European part, W Siberia. – Europe.

***D. versicolore*** (Brahm, 1790)

**Material examined.** KUZNETSK DEPRESSION: Shabanovo, 02.vii.1998, 1 ex. (*D. Efimov*) (EGCB); Kuznetsk, 30.5.1908, 1 ex. (*Khvorov*) (ZIN) [Kemerovo Region, Novokuznetsk].

**Distribution.** Russia: European part (except for S), N Caucasus (Teberda), S Ural, W and E Siberia, Far East. – Europe, Kazakhstan.

**PLATEUMARINI** Boving, 1922***PLATEUMARIS*** Thomson C.G., 1859

***Plateumaris (Euplateumaris)*** Iablokoff-Khnzorian, 1966

***P. (Euplateumaris) sericea*** (Linnaeus, 1758)

**Material examined.** GORNAYA SHORIA: Mustag Mt., 15.vii.2000, 5 ex. (*D. Efimov*) (EGCB), 4 ex. (DECK); 2 ex. (*D. Sushchev*) (DECK); Mustag Mt., 07.vii.2001, 2 ex.; 600 m., 10.vii.2001, 1 ex. (*A. Atuchin*) (AACK); Mustag Mt., 02.vii.2015, 5 ex. (*D. Efimov*) (EGCB); KUZNETSKY ALATAU: Cherny Voron Mt., 6.vii.2009 1 ex. (*A. Korshunov*) (IZCS).

**Literature data.** KUZNETSKY ALATAU: The southern part of the western macroslope [Skalistye Gory range] (Mikhailov, 1996).

**Distribution.** Russia: European part, S Ural, W and E Siberia, Far East. – Europe, Kazakhstan, Iran.

***Plateumaris (Plateumaris)*** Thomson C.G., 1859

***P. (Plateumaris) braccata*** (Scopoli, 1772)

**Material examined.** KUZNETSK DEPRESSION: Maruchak, 24.vi.1997, 2 ex. (*A. Atuchin*) (AACK); Prokopyevsk, 18.vi.2005, 15 ex. (*A. Atuchin*) (AACK).

**Literature data.** KUZNETSKY ALATAU: Kuznetsk Alatau Nature Reserve (Cadastral..., 2017).

**Distribution.** Russia: European part, S Ural, W Siberia. – Europe, Kazakhstan.

***P. (Plateumaris) weisei*** (Duvivier, 1885)

**Material examined.** KUZNETSK DEPRESSION: Inya valley, 03.vii.1995, 1 ex. (*A. Atuchin*) (AACK); Prokopyevsk, 18.vi.2005, 2 ex. (*A. Atuchin*) (AACK); KUZNETSKY ALATAU: Cherny Voron Mt., 06.vii.2009, 1 ex. (*A. Korshunov*) (EGCB).



**Distribution.** Russia: European part (Taiga zone), W and E Siberia, Far East. – N Europe, Mongolia, China (Northeast Territory, Inner Mongolia), Japan.

### CRIOCERINAE Latreille, 1804

#### *CRIOCERIS* Geoffroy, 1762

##### *C. duodecimpunctata* (Linnaeus, 1758)

**Material examined.** KUZNETSK DEPRESSION: Staraya Balakhonka, 04.vii.1994, 1 ex. (*A. Atuchin*) (AACK); Kemerovo, 29.vi.1997, 1 ex. (*A. Atuchin*) (AACK); Maruchak, vii.1997, 1 ex. (*D. Sushchev*) (DECK); Prokopyevsk, 15.vi.2005, 3 ex. (*A. Atuchin*) (AACK); Smyshlyaev, 16.vi.2005, 3 ex. (*A. Atuchin*) (AACK); Mozhukha, 13.vi.2009, 1 ex. (*D. Efimov*) (EGCB); Staraya Balakhonka, 09.vii.2009, 1 ex. (*D. Efimov*) (EGCB), 1 ex. (DECK).

**Literature data.** KUZNETSKY ALATAU: Kuznetsk Alatau Nature Reserve (Cadastral..., 2017).

**Distribution.** Russia: European part, S Ural, southern parts of W Siberia. – Europe, Kazakhstan, Middle Asia, Mongolia.

##### *C. quatuordecimpunctata* (Scopoli, 1763)

**Material examined.** KUZNETSK DEPRESSION: Bekovo, 09.vi.2003, 1 ex. (*A. Korshunov*) (AACK); Staraya Balakhonka, 09.vii.2009, 1 ex. (*D. Efimov*) (EGCB).

**Distribution.** Russia: European part, S Ural, Siberia, Far East. – Europe, NE China, Korea, Japan, Mongolia.

##### *C. quinquepunctata* (Scopoli, 1763)

#### **Literature data.**

KUZNETSKY ALATAU: Kuznetsk Alatau Nature Reserve (Cadastral..., 2017).

**Distribution.** Russia: European part, WS Siberia. – Europe.

#### *LEMA* Fabricius, 1798

##### *L. cyanella* (Linnaeus, 1758)

**Material examined.** KUZNETSK DEPRESSION: Prokopyevsk, 05.vi.1999, 1 ex. (*A. Atuchin*) (AACK); KUZNETSKY ALATAU: Makarasky, 01–07.vii.2007, 1 ex. (*S. Dronova*) (EGCB).

**Distribution.** Russia: European part, Siberia, Yakutia, Far East. – Europe, Mongolia, Kazakhstan, China. Nearctic Region.

#### *LILIOCERIS* Reitter, 1913

##### *L. lilii* (Scopoli, 1763)

**Material examined.** KUZNETSK DEPRESSION: Podyakovo, 08.vii.1983, 1 ex. (KSUC); Prokopyevsk, 03.viii.1995, 1 ex. (*A. Atuchin*) (AACK); Prokopyevsk, 30.v.1999, 1 ex. (*A. Atuchin*) (AACK); Maruchak, 18.v.2003, 2 ex. (*A. Atuchin*) (AACK); Sukhaya Rechka, 17.vi.2006, 1 ex. (*A. Chernova*) (DECK); KUZNETSKY ALATAU: Chemodan Mt., 18.vi.1996, 1 ex. (KSUC); GORNAYA SHORIA: Zelenaya Mt., 600 m., 02.vii.2001, 1 ex. (*A. Atuchin*) (AACK).

**Distribution.** Russia: European part, S Ural, W and E Siberia, Far East. – Europe, Kazakhstan, Mongolia, Iran. Nearctic Region.

##### *L. merdigera* (Linnaeus, 1758)

**Material examined.** KUZNETSK DEPRESSION: Podyakovo, 02.vii.1988, 1 ex.; 08.vii.1993, 1 ex. (KSUC); KUZNETSKY ALATAU: Cherny Voron Mt., 16.vii.1998, 1 ex. (*A. Atuchin*) (AACK); GORNAYA SHORIA: Mustag Mt., 07.vii.2000, 1 ex. (*D. Efimov*) (EGCB).

**Distribution.** Russia: European part, Siberia, Far East. – Europe, Kazakhstan, N Mongolia, N China, Korea, Japan, N America.

#### *OULEMA* Des Gozis, 1886

##### *O. erichsonii* (Suffrian, 1841)

**Material examined.** KUZNETSK DEPRESSION: Smyshlyaev, 16.vi.2005, 3 ex. (*A. Atuchin*) (AACK); Zhuravlevo, 30.vi.2006, 1 ex. (*A. Atuchin*) (AACK); Azhendarovo, 01–05.vi.2014, 3 ex. (*A. Korshunov*) (EGCB); Krasnobrodsky, 21.viii.2014, 1 ex. (*D. Efimov*) (DECK); KUZNETSKY ALATAU: Balyksa, 02.vii.2004, 1 ex. (*A. Atuchin*) (AACK); GORNAYA SHORIA:

Telbes, 02–12.vii.2003, 5 ex. (*A. Atuchin*) (AACK); Krasnoye Selo, 13.vii.2004, 1 ex. (*A. Atuchin*) (AACK); Podkatun, 07.vii.2005, 1 ex. (*A. Atuchin*) (AACK); Mundybash, 10.vii.2005, 1 ex. (*A. Atuchin*) (AACK).

**Distribution.** Russia: European part, Siberia, Yakutia, Far East. – Europe, Iran, Mongolia, China, Japan.

***O. melanopus*** (Linnaeus, 1758)

**Material examined.** KUZNETSK DEPRESSION: Kemerovo, 05.v.1990, 4 ex. (*A. Atuchin*) (AACK); Azhendarovo, 10–20.vii.2008, 7 ex. (*A. Korshunov*) (EGCB); Novy Gorodok, 9.viii.2014, 1 ex. (*D. Efimov*) (DECK).

**Literature data.** KUZNETSKY ALATAU: Kuznetsk Alatau Nature Reserve (Cadastral..., 2017).

**Distribution.** Russia: European part, Siberia, Yakutia. – Europe, Caucasus, Iran, Afghanistan, Mongolia, N Africa.

## CASSIDINAE Gyllenhal, 1813

### CASSIDINI Gyllenhal, 1813

**CASSIDA** Linnaeus, 1758

***C. azurea*** Fabricius, 1801

**Material examined.** KUZNETSK DEPRESSION: Azhendarovo, 10–20.vii.2008, 1 ex. (*A. Korshunov*) (EGCB); Mozzhukha, 30.v.2009, 2 ex. (*D. Efimov*) (EGCB); Izvestkovy, 30.vi.2009, 1 ex. (*A. Korshunov*) (EGCB); Dmitrievka, 20.vi.2006, 3 ex. (*A. Korshunov*) (EGCB); Dmitrievka, 25.vi.2006, 1 ex. (*D. Efimov*) (EGCB); Smyshlyaev, 23.vi.2007, 1 ex. (*A. Atuchin*) (AACK).

**Literature data.** KUZNETSKY ALATAU: Kuznetsk Alatau Nature Reserve (Cadastral..., 2017).

**Distribution.** Russia: European part, W and E Siberia. – Europe, Turkey, Kazakhstan, Mongolia.

***C. denticollis*** Suffrian, 1844

**Material examined.** KUZNETSK DEPRESSION: Shabanovo, 14.vii.2004, 1 ex. (*A. Atuchin*) (AACK); Zhuravlevo, 30.vi.2006, 1 ex. (*A. Atuchin*) (AACK).

**Literature data.** KUZNETSKY ALATAU: Kuznetsk Alatau Nature Reserve (Cadastral..., 2017).

**Distribution.** Russia: European part, W and E Siberia. – Europe, Kazakhstan, Mongolia, China.

***C. ferruginea*** Goeze, 1777

**Material examined.** KUZNETSK DEPRESSION: Smyshlyaev, 16.vi.2005, 1 ex. (*A. Atuchin*) (AACK).

**Literature data.** KUZNETSKY ALATAU: Kuznetsk Alatau Nature Reserve (Cadastral..., 2017).

**Distribution.** Russia: European part, SW Siberia. – Europe, Kazakhstan, N Africa.

***C. flaveola*** Thunberg, 1794

**Material examined.** KUZNETSKY ALATAU: Balyksa, 03.vii.2004, 2 ex. (*A. Atuchin*) (AACK).

**Distribution.** All over Palearctic.

***C. murraea*** Linnaeus, 1767

**Material examined.** KUZNETSK DEPRESSION: Podyakovo, vii.1998, 1 ex. (*A. Korshunov*) (EGCB); Tsyfino, vii.1998, 2 ex. (*A. Atuchin*) (AACK); Osinovka, vii.2001, 1 ex. (*A. Korshunov*) (EGCB); Podyakovo, 08.vii.2002, 1 ex. (*A. Atuchin*) (AACK); Kemerovo, 13.vii.2002, 1 ex. (*A. Atuchin*) (AACK); Podyakovo, 04.vii.2007, 1 ex. (*N. Teplova*) (DECK). KUZNETSKY ALATAU: Makaraksky, vii.2007, 26 ex. (*A. Atuchin*) (AACK).

**Literature data.** KUZNETSKY ALATAU: Kuznetsk Alatau Nature Reserve (Cadastral..., 2017).

**Distribution.** All over Palearctic except for Mediterranean, Central Asia and N Africa.

***C. nebulosa*** Linnaeus, 1758

**Material examined.** GORNAYA SHORIA: Sheregesh, 07.vii.2000, 2 ex. (KSUC); Podkatun, 06.vii.2003, 1 ex. (*A. Atuchin*) (AACK); KUZNETSK DEPRESSION: Kemerovo, 15.vi.1981, 1 ex.; 29.vi.1993, 1 ex.; 30.vi.1996, 1 ex.; 01.vii.1996, 1 ex.; 03.vii.1996, 1 ex. (KSUC); Podyakovo, 01.vii.1993, 1 ex.; 30.vii.1993, 1 ex.; 17.vi.1994, 1 ex. (KSUC); Prokopyevsk, vi.1997, 1 ex.; 25.v.2000, 1 ex. (*A. Atuchin*) (AACK); Shabanovo, 06.vii.1998, 2 ex. (KSUC); Podyakovo,

08.vii.2002, 1 ex. (*A. Atuchin*) (AACK); Krasnoye Selo, 12.vii.2004, 1 ex. (*A. Atuchin*) (AACK); Mozzhukha, 30.v.2004, 1 ex. (*D. Efimov*) (DECK); Zhuravlevo, 30.vi.2006, 2 ex. (*A. Atuchin*) (AACK); Krekovo, 28.v.2016, 1 ex. (*D. Efimov*) (EGCB); KUZNETSKY ALATAU: Luzhba, 16.vii.1997, 1 ex. (KSUC); Makarasky, 10.vii.2007, 2 ex. (*T. Platonova*) (DECK).

**Distribution.** All over Palearctic except for Mediterranean, introduced to N America.

***C. nobilis*** Linnaeus, 1758

**Material examined.** KUZNETSK DEPRESSION: Podyakovo, 18.vi.1994, 1 ex. (*A. Atuchin*) (AACK); Mozzhukha, 17.vii.2001, 1 ex. (*A. Korshunov*) (EGCB); Mozzhukha, 09.vi.2013, 1 ex. (*D. Efimov*) (EGCB); Katkovo, 10.vii.2014, 1 ex. (*N. Teplova*) (EGCB).

**Literature data.** KUZNETSKY ALATAU: Kuznetsk Alatau Nature Reserve (Cadastral..., 2017).

**Distribution.** All over Palearctic except for extreme N and N Africa.

***C. pallidicollis*** Boheman, 1856

**Material examined.** KUZNETSK DEPRESSION: Kemerovo, 26.v.1998, 1 ex. (*D. Sushchev*) (AACK); Prokopyevsk, 18.v.2000, 2 ex. (*A. Atuchin*) (AACK); Mozzhukha, 30.v.2009, 1 ex. (*D. Efimov*) (IZCS).

**Literature data.** KUZNETSKY ALATAU: Kuznetsk Alatau Nature Reserve (Cadastral..., 2017).

**Distribution.** Russia: S Siberia, Far East. – Korea, China.

***C. panzeri*** Weise, 1907

**Material examined.** GORNAYA SHORIA: Telbes, 08.vii.2003, 2 ex. (*A. Atuchin*) (AACK); Mundybash, 06.vii.2005, 1 ex. (*A. Atuchin*) (AACK); KUZNETSK DEPRESSION: Podyakovo, 21.vi.1994, 2 ex. (*A. Atuchin*) (AACK); Prokopyevsk, 21.vi.2000, 1 ex. (*A. Atuchin*) (AACK); Staraya Balakhonka, 11.vi.2001, 1 ex. (*D. Efimov*) (EGCB); Osinovka, 15.vi.2001, 1 ex. (*A. Korshunov*) (AACK); Mozzhukha, 13.vi.2009, 1 ex. (*D. Efimov*) (DECK); Oktyabrsky, 25.vi.2014, 1 ♀ (*D. Efimov*) (EGCB).

**Literature data.** KUZNETSKY ALATAU: Kuznetsk Alatau Nature Reserve (Cadastral..., 2017).

**Distribution.** Russia: European part, W and E Siberia, Far East. – Europe, Kazakhstan, Mongolia, Japan.

***C. prasina*** Illiger, 1798

**Material examined.**

GORNAYA SHORIA: Mundybash, 02–10.vii.2005, 18 ex. (*A. Atuchin*) (AACK); Telbes, 07–12.vii.2003, 10 ex. (*A. Atuchin*) (AACK); KUZNETSK DEPRESSION: Mozzhukha, 30.vi.2002, 1 ex. (*A. Korshunov*) (EGCB);

**Literature data.** KUZNETSKY ALATAU: Kuznetsk Alatau Nature Reserve (Cadastral..., 2017).

**Distribution.** Russia: European part, W and E Siberia. – Europe, Turkey, Kazakhstan, Mongolia, China.

***C. rubiginosa*** Muller O.F., 1776

**Material examined.** GORNAYA SHORIA: Kuzedeevo, 07.vii.1996, 1 ex. (KSUC); Zelenaya Mt., 04.vii.2000, 2 ex.; 02–11.vii.2001, 5 ex. (KSUC); Telbes, 02.vii.2003, 1 ex. (*A. Atuchin*) (AACK); Mundybash, 02.vii.2005, 3 ex. (*A. Atuchin*) (AACK); KUZNETSK DEPRESSION: Shabanovo, 02.vii.1998, 2 ex. (KSUC); Prokopyevsk, 30.v.1999, 1 ex.; 21.vi.2000, 1 ex. (*A. Atuchin*) (AACK); Kemerovo, 01.vii.1999, 1 ex.; 17.vii.2002, 1 ex. (KSUC); Podyakovo, vi.2002, 1 ex. (KSUC); Kemerovo, 16.06.2016, 1 ex. (*D. Efimov*) (EGCB); KUZNETSKY ALATAU: Chemodan Mt., 19.vi.1996, 1 ex. (KSUC); Belsu River, 09.vii.1997, 1 ex. (KSUC); Luzhba, 13.vii.1997, 1 ex. (KSUC); SALAIR RIDGE: Kostenkovo, 24.viii.2015, 1 ex. (*D. Efimov*) (EGCB).

**Literature data.** KUZNETSKY ALATAU: Shaman Range (Jacobson, 1901).

**Distribution.** Russia: European part, W Siberia. – Europe, Mongolia.

***C. sanguinolenta*** Muller O.F., 1776

**Material examined.** GORNAYA SHORIA: Telbes, 02.vii.2003, 1 ex. (*A. Atuchin*) (AACK); Mundybash, 02.vii.2005, 3 ex. (*A. Atuchin*) (AACK); KUZNETSK DEPRESSION: Podyakovo, 05.vii.2000, 1 ex. (*I. Birzak*) (DECK); Prokopyevsk, 27.vi.2001, 1 ex. (*A. Atuchin*) (AACK); Podyakovo, 02.vii.2001, 1 ex. (*A. Atuchin*) (AACK); Kemerovo, vi.2002, 1 ex. (*A. Atuchin*) (AACK).

**Literature data.** KUZNETSKY ALATAU: Kuznetsk Alatau Nature Reserve (Cadastral..., 2017).

**Distribution.** Russia: European part, W and E Siberia, Far East. – Europe, Turkey, Kazakhstan.

*C. sanguinosa* Suffrian, 1844

**Material examined.** GORNAYA SHORIA: Kuzedevo, 02.vii.1996, 1 ex. (*A. Atuchin*) (AACK); Telbes, 02–10.vii.2003, 5 ex. (*A. Atuchin*) (AACK); Mundybash, 02.vii.2005, 3 ex. (*A. Atuchin*) (AACK); KUZNETSKY ALATAU: Balyksa, 06–08.vii.2004, 7 ex. (*A. Atuchin*) (AACK); SALAIR RIDGE: Sary-Chumysh, 06.vii.2002, 3 ex. (*A. Atuchin*) (AACK).

**Distribution.** Russia: European part, W and E Siberia. – Europe, Kazakhstan.

*C. stigmatica* Suffrian, 1844

**Material examined.** GORNAYA SHORIA: Mundybash, 02.vii.2005, 9 ex. (*A. Atuchin*) (AACK); Podkatun, 13.vii.2005, 1 ex. (*A. Atuchin*) (AACK); KUZNETSK DEPRESSION: Smyshlyaevo, 16.vi.2005, 3 ex. (*A. Atuchin*) (AACK); Chistugash, 19.vi.2005, 3 ex. (*A. Atuchin*) (AACK).

**Literature data.** KUZNETSKY ALATAU: Kuznetsk Alatau Nature Reserve (Cadastral..., 2017).

**Distribution.** Russia: European part, W and E Siberia. – Europe, Turkey, Kazakhstan, China.

*C. subreticulata* Suffrian, 1844

**Material examined.** KUZNETSK DEPRESSION: Mozhukha, 18.vii.2002, 1 ex. (*A. Korshunov*) (EGCB); Azhendarovo, 10–20.vii.2008, 1 ex. (*A. Korshunov*) (EGCB).

**Distribution.** Russia: European part, W and E Siberia, Far East. – Europe, Turkey, Kazakhstan, Mongolia, China, Japan.

*C. vibex* Linnaeus, 1767

**Material examined.** GORNAYA SHORIA: Kuzedevo, 07.vii.1996, 1 ex. (KSUC); Mundybash, 02.vii.2005, 4 ex. (*A. Atuchin*) (AACK); KUZNETSK DEPRESSION: Lachinovo, 11.vii.1992, 1 ex. (KSUC); Podyakovo, 19.vi.1994, 1 ex. (*A. Atuchin*) (AACK); Prokopyevsk, vii.1999, 1 ex.; 25.v.2000, 1 ex. (*A. Atuchin*) (AACK); Mozhukha, 30.vi.2002, 1 ex. (*A. Korshunov*) (EGCB); Krekovo, 30.vi.2005, 1 ex. (*E. Saveljeva*) (EGCB); Zhuravlevo, 28.vi.2006, 2 ex. (*A. Atuchin*) (AACK); Mozhukha, 30.v.2009, 1 ex. (*D. Efimov*) (EGCB); Berezovo, 11.vii.2013, 1 ex. (*D. Efimov*) (EGCB); Krekovo, 25.viii.2013, 1 ex. (*D. Efimov*) (EGCB); Krasnobrodsky, 21.viii.2014, 1 ex. (*D. Efimov*) (DECK); Zhuravlevo (K), 20.06.2016, 1 ex. (*D. Efimov*) (EGCB); SALAIR RIDGE: Sary-Chumysh, vii.2002, 11 ex. (*A. Atuchin*) (AACK).

**Literature data.** KUZNETSKY ALATAU: Kuznetsk Alatau Nature Reserve (Cadastral..., 2017).

**Distribution.** Russia: European part, W and E Siberia, Far East. – Europe, Turkey, Kazakhstan, Mongolia, China.

*C. viridis* Linnaeus, 1758,

**Material examined.** GORNAYA SHORIA: Mundybash, 02.vii.2005, 1 ex. (*A. Atuchin*) (AACK); Telbes, 07.vii.2003, 1 ex. (*A. Atuchin*) (AACK); KUZNETSK DEPRESSION: Zhuravlevo (K), 17.vi.1994, 1 ex. (KSUC); Podyakovo, 16.vii.1992, 1 ex.; 20.vi.1994, 1 ex.; 28.vi.1996, 1 ex.; 09.vii.1998, 1 ex. (KSUC); Kemerovo, 28.vi.1996, 1 ex.; 29.vi.1997, 1 ex.; 03.vi.2002, 1 ex. (KSUC); Kemerovo, 01.vi.2003, 1 ex. (*A. Atuchin*) (AACK); Krekovo, 23.v.2004, 1 ex. (*A. Atuchin*) (AACK); Staraya Balakhonka, 16.vi.2012, 1 ex. (*D. Efimov*) (DECK); Shabanovo, 30.vi.1995, 1 ex. (*A. Atuchin*) (AACK); Prokopyevsk, 01.ix.1999, 3 ex. (*A. Atuchin*) (AACK); Inya valley, 03.vii.1995, 3 ex. (*A. Atuchin*) (AACK); KUZNETSKY ALATAU: Chemodan Mt., 07.vii.1990, 1 ex. (*N. Demidenko*) (DECK);

**Distribution.** All over Palearctic.

*HYPOCASSIDA* Weise, 1893

*H. subferruginea* (Schrank, 1776)

**Material examined.** KUZNETSK DEPRESSION: Mozhukha, 30.vi.2002, 1 ex. (*A. Korshunov*) (EGCB); Bekovo, 30.v.2002, 1 ex. (*A. Korshunov*) (EGCB); Prokopyevsk, 10.vii.2000, 1 ex. (*A. Atuchin*) (AACK); Mirny, 20.vii.2003, 1 ex. (*A. Atuchin*) (AACK); Kasma River, 08.vii.1995, 1 ex. (KSUC); Krekovo, 28.v.2016, 1 ex. (*D. Efimov*) (EGCB).

**Literature data.** KUZNETSKY ALATAU: Kuznetsk Alatau Nature Reserve (Cadastral..., 2017).

**Distribution.** Russia: European part, southern parts of Siberia, Maritime Prov. – Europe, Kazakhstan, Middle Asia, Mongolia.

**PILEMOSTOMA** Desbrochers des Loges, 1891***P. fastuosum*** (Schaller, 1783)**Material examined.** KUZNETSK DEPRESSION: Smyshlyaev, 23.vi.2007, 1 ex. (*A. Atuchin*) (AACK).**Literature data.** KUZNETSKY ALATAU: Kuznetsk Alatau Nature Reserve (Cadastral..., 2017).**Distribution.** Russia: European part, W and E Siberia. – Europe, Turkey, Kyrgyzstan, Kazakhstan, Mongolia.**HISPINI** Gyllenhal, 1813***HISPA*** Linnaeus, 1767***H. atra*** Linnaeus, 1767**Material examined.** KUZNETSK DEPRESSION: Fedorovo Lake, 31.vii.2009, 1 ex. (*D. Efimov*) (DECK); Shabanovo, 25.vii.2014, 1 ex. (*D. Efimov*) (AACK); Novy Gorodok, 09.viii.2014, 1 ex. (*D. Efimov*) (EGCB); Krivoy Uskat River, 21.viii.2014, 1 ex. (*D. Efimov*) (EGCB); 30.vi.2006, 2 ex. (*A. Atuchin*) (AACK).**Literature data.** KUZNETSKY ALATAU: Kuznetsk Alatau Nature Reserve (Cadastral..., 2017).**Distribution.** Russia: European part, southern parts of Siberia. – Europe, Caucasus, Turkey, Middle Asia, Kazakhstan, Mongolia.**CHRYSOMELINAE** Latreille, 1802**CHRYSOMELINI** Latreille, 1802**CHRYSOMELINA** Latreille, 1802***CHRYSOMELA*** Linnaeus, 1758***C. collaris*** Linnaeus, 1758**Material examined.** KUZNETSK DEPRESSION: Osinovka, 15.vi.2001, 1 ex. (*A. Korshunov*) (AACK).**Literature data.** KUZNETSKY ALATAU: Kuznetsk Alatau Nature Reserve (Cadastral..., 2017).**Distribution.** Russia: European part, W and E Siberia, Far East. – Europe, Turkey, Kazakhstan, Mongolia.***C. cuprea*** Fabricius, 1775**Material examined.** KUZNETSKY ALATAU: Makaraksky, 02–05.vii.2007, 1 ex. (*T. Platonova*) (EGCB); SALAIR RIDGE: Sary-Chumysh, vii.2002, 2 ex. (*A. Atuchin*) (AACK).**Literature data.** KUZNETSKY ALATAU: Shaman Range (Jacobson, 1901).**Distribution.** Russia: European part, W and E Siberia, Far East. – Europe.***C. lapponica*** Linnaeus, 1758**Material examined.** KUZNETSK DEPRESSION: Podyakovo, 22.vi.1994, 1 ex. (KSUC); Smyshlyaev, 16.vi.2005, 1 ex. (*A. Atuchin*) (AACK); Azhendarovo, 01–05.vi.2014, 1 ex. (*A. Korshunov*) (EGCB); KUZNETSKY ALATAU: Chemodan Mt., 19.vi.1996, 1 ex. (KSUC); Balyksa, 02–08.vii.2004, 23 ex. (*A. Atuchin*) (AACK); Makaraksky, 10.vii.2007, 1 ex. (*K. Zhuleyko*) (DECK); SALAIR RIDGE: Sary-Chumysh, 09.vii.2002, 2 ex. (*A. Atuchin*) (AACK); GORNAYA SHORIA: Kuzedeevo, 07.vii.1996, 1 ex. (*A. Atuchin*) (AACK); Telbes, 08.vii.2003, 31 ex. (*A. Atuchin*) (AACK); Mundybash, 02.vii.2005, 2 ex. (*A. Atuchin*) (AACK); Ust-Kabyrza, 13.vii.2008, 1 ex. (EGCB); Sheregesh, 01.vii.2015, 1 ex. (*D. Efimov*) (EGCB).**Literature data.** KUZNETSKY ALATAU: Shaman Range (Jacobson, 1901). Upper Verkh. Taizhasu river; mt. Igly Taizhasu; mt. Kugutu (Mikhailov, 2001).**Distribution.** Russia: European part, W and E Siberia, Far East. – Europe, Mongolia, China, Japan.***C. populi*** Linnaeus, 1758**Material examined.** KUZNETSK DEPRESSION: Prokopyevsk, 30.v.1997, 1 ex.; 18.vi.2000, 1 ex. (*A. Atuchin*) (AACK); Podyakovo, 09.vii.2001, 1 ex. (KSUC); Zhuravlevo, 30.vi.2006, 3 ex. (*A. Atuchin*) (AACK); Azhendarovo, 10–20.vii.2008, 1 ex. (*A. Korshunov*) (EGCB); Kemerovo, 15.v.2009, 2 ex. (*D. Efimov*) (EGCB); KUZNETSKY ALATAU: Luzhba, 08–

14.vii.1997, 8 ex. (KSUC); Balyksa, 03.vii.2004, 3 ex. (*A. Atuchin*) (AACK); Makaraksky, 01–09.vii.2007, 1 ex. (*S. Dronova*) (EGCB); SALAIR RIDGE: Sary-Chumysh, vii.2002, 11 ex. (*A. Atuchin*) (AACK); GORNAYA SHORIA: Sheregesh, 10.vii.2001, 2 ex. (KSUC); Telbes, 08.vii.2003, 9 ex. (*A. Atuchin*) (AACK); Telbes, 12.vii.2003, 1 ex. (*I. Fitz*) (EGCB).

**Distribution.** All over Palearctic.

*C. saliceti* (Weise, 1884)

**Material examined.** KUZNETSK DEPRESSION: Tom valley, 25.v.2009, 1 ex. (*E. Pirogova*) (EGCB).

**Literature data.** KUZNETSKY ALATAU: Kuznetsk Alatau Nature Reserve (Cadastral..., 2017).

**Distribution.** All over Palearctic except for Middle Asia.

*C. tremula* Fabricius, 1787

**Material examined.** KUZNETSK DEPRESSION: Tom River, island, 09.viii.1998, 1 ex. (*D. Efimov*) (EGCB); Azhendarovo, 10–20.vii.2008, 1 ex. (*A. Korshunov*) (EGCB); KUZNETSKY ALATAU: Chemodan Mt., 23.vi.1997, 1 ex. (KSUC); Luzhba, 04–14.vii.1997, 2 ex. (*D. Efimov*) (EGCB); GORNAYA SHORIA: Sheregesh, 10.vii.2001, 2 ex. (*A. Atuchin*) (AACK); Telbes, 08.vii.2003, 1 ex. (*A. Atuchin*) (AACK).

**Literature data.** KUZNETSKY ALATAU: Shaman Range (Jacobson, 1901).

**Distribution.** All over Palearctic except for Middle Asia.

*C. vigintipunctata* (Scopoli, 1763)

**Material examined.** KUZNETSK DEPRESSION: Kemerovo, 06.vii.1995, 1 ex. (*A. Atuchin*) (AACK); KUZNETSKY ALATAU: Cherny Voron Mt., 25.vii.1998 1 ex. (*D. Efimov*) (DECK); Makaraksky, 02–05.vii.2007, 1 ex. (*T. Platonova*) (EGCB); GORNAYA SHORIA: Ust-Kabyrza, 02.vii.2008, 1 ex. (*A. Pirogova*) (EGCB).

**Distribution.** All over Palearctic.

**PLAGIODERA** Chevrolat in Dejean, 1837

*P. versicolora* (Laicharting, 1781)

**Material examined.** KUZNETSK DEPRESSION: Podyakovo, 19.vi.1994, 1 ex. (*A. Atuchin*) (AACK); Shabanovo, 14.vii.2004, 1 ex. (*A. Atuchin*) (AACK); Zhuravlevo, 02.vii.2006, 2 ex. (*A. Atuchin*) (AACK); Azhendarovo, 10–20.vii.2008, 1 ex. (*A. Korshunov*) (EGCB); KUZNETSKY ALATAU: Makaraksky, 10.vii.2007, 1 ex. (*E. Beljaeva*) (EGCB).

**Distribution.** All over Holarctic.

**PLAGIOSTERNA** Motschulsky, 1860

*P. aenea* (Linnaeus, 1758)

**Material examined.** KUZNETSKY ALATAU: Belsu River, 09.vii.1997, 1 ex. (KSUC); Balyksa, 03.vii.2004, 3 ex. (*A. Atuchin*) (AACK).

**Distribution.** All over Palearctic.

**GASTROPHYSINA** Kippenberg, 2010

**GASTROPHYSA** Chevrolat, 1836

*G. polygona* (Linnaeus, 1758)

**Material examined.** KUZNETSK DEPRESSION: Podyakovo, 30.vi.1993, 4 ex. (KSUC); Prokopyevsk, 10.vi.1999, 1 ex. (*A. Atuchin*) (AACK); Pinigino, 15.vii.2000, 1 ex. (*A. Atuchin*) (AACK); Bekovo, 13.vii.2003, 1 ex. (KSUC); Zvezdny, 19.v.2004, 1 ex. (*A. Atuchin*) (AACK); Krekovo, 23.v.2004, 1 ex. (*A. Atuchin*) (AACK); GORNAYA SHORIA: Podkatun, 07.vii.2005, 1 ex. (*A. Atuchin*) (AACK).

**Literature data.** KUZNETSKY ALATAU: Kuznetsk Alatau Nature Reserve (Cadastral..., 2017).

**Distribution.** Russia: European part, Siberia.– Kazakhstan, Mongolia, Japan, China, N Africa.

*G. viridula lenta* (Weise, 1887)

**Material examined.** KUZNETSKY ALATAU: Chemodan Mt., 20.vii.1990, 1 ex. (*N. Demidenko*) (KSUC); Shat River, 10.vii.2000, (*S. Nenilin*) (EGCB); Cherny Voron Mt., 07.vii.2009, 1 ex.

(*A. Korshunov*) (DECK); GORNAYA SHORIA: Sheregesh, 06.vii.2001, 1 ex. (*A. Atuchin*) (AACK); Mustag Mt., 02.vii.2015, 4 ex. (*D. Efimov*) (EGCB).

**Literature data.** KUZNETSKY ALATAU: The southern part of the western macroslope [Skalistye Gory range] (Mikhailov, 1996).

**Distribution.** Russia: Siberia.– Mongolia.

**OREOTHASSA** Jacobson, 1901

*O. martjanowi* Jacobson, 1901

**Material examined.** KUZNETSKY ALATAU: Cherny Voron Mt., 07.vii.2009, 2 ♀ (*A. Korshunov*) (EGCB).

**Literature data.** KUZNETSKY ALATAU: Kemerovo Reg. (Shaman Range (Jacobson, 1901); Skalistye Gory Ridge; Igly Tayzhasu Ridge); GORNAYA SHORIA: Kemerovo Reg., Mustag Mt. (Mikhailov, 2009).

**Distribution.** Russia: Altai, Kuznetsky Alatau, – E Kazakhstan.

**STERNOPLATYS** Motschulsky, 1860

*Sternoplatys (Apterocuris)* Jacobson, 1901

*S. (Apterocuris) sibiricus* (Gebler, 1830)

**Material examined.** KUZNETSKY ALATAU: Cherny Voron Mt., 07.vii.2009, 3 ♀ (*A. Korshunov*) (EGCB).

**Literature data.** KUZNETSKY ALATAU: The southern part of the western macroslope [Skalistye Gory range] (Mikhailov, 1996).

**Distribution.** Russia: Altai, Kuznetsky Alatau. – E Kazakhstan.

**PHRATORINA** Motschulsky, 1860

**PHRATORA** Chevrolat, 1836

*Phratora (Phratora)* Chevrolat, 1836

*P. (Phratora) vulgatissima* (Linnaeus, 1758)

**Material examined.** KUZNETSK DEPRESSION: Kemerovo, 21.vi.1993, 1 ex. (KSUC); Prokopyevsk, 01.vii.2000, 1 ex. (*A. Atuchin*) (AACK); Mozzhukha, 30.v.2004, 1 ex. (*D. Efimov*) (DECK); Shabanovo, 14.vii.2004, 11 ex. (*A. Atuchin*) (AACK); Krasnoye Selo, 12.vii.2004, 1 ex. (*A. Atuchin*) (AACK); Smyshlyaevo, 16.vi.2005, 1 ex. (*A. Atuchin*) (AACK); Zhuravlevo, 27.vi.2006, 1 ex. (*A. Atuchin*) (AACK); SALAIR RIDGE: Sary-Chumysh, 10.vii.2002, 2 ex. (*A. Atuchin*) (AACK); KUZNETSKY ALATAU: Makarasky, 01–09.vii.2007, 1 ex. (*S. Dronova*) (EGCB), 1 ex. (*K. Zhulejko*) (EGCB); GORNAYA SHORIA: Sheregesh, 04.vii.2001, 1 ex. (*A. Atuchin*) (AACK); Mundybash, 03.vii.2005, 3 ex. (*A. Atuchin*) (AACK);

**Literature data.** KUZNETSKY ALATAU: Shaman Range (Jacobson, 1901).

**Distribution.** All over Holarctic.

*Phratora (Phyllodecta)* Kirby, 1837

*P. (Phyllodecta) atrovirens* (Cornelius, 1857)

**Material examined.** KUZNETSK DEPRESSION: Zhuravlevo, 27.vi.2006, 5 ex. (*A. Atuchin*) (AACK); Starobachaty, 10.vi.2011, 1 ex. (*D. Efimov*) (EGCB); KUZNETSKY ALATAU: Balyksa, 03.vii.2004, 18 ex. (*A. Atuchin*) (AACK); SALAIR RIDGE: Sary-Chumysh, vii.2002, 2 ex. (*A. Atuchin*) (AACK); GORNAYA SHORIA: Telbes, 02.vii.2003, 15 ex. (*A. Atuchin*) (AACK); Mundybash, 02.vii.2005, 17 ex. (*A. Atuchin*) (AACK); Mundybash, 04.vii.2005, (*A. Zhuravleva* & *D. Mogilina*) (EGCB); Ust-Kabyrza, 02.vii.2008, 2 ex. (*A. Pirogova*) (DECK).

**Distribution.** Russia: European part, Siberia.– Europe, Mongolia, China.

*P. (Phyllodecta) laticollis* (Suffrian, 1851)

**Material examined.** KUZNETSKY ALATAU: Balyksa, 07.vii.2004, 1 ex. (*A. Atuchin*) (AACK); Makarasky, 01–09.vii.2007, 1 ex. (*S. Dronova*) (EGCB); Makarasky, 10.vii.2007, 1 ex. (*K. Zhulejko*) (EGCB); GORNAYA SHORIA: Telbes, 10.vii.2003, 3 ex. (*A. Atuchin*) (AACK); KUZNETSK DEPRESSION: Tom River, 09.viii.1998, 1 ex. (*D. Efimov*) (DECK); Prokopyevsk, vi.1999, 1 ex. (*A. Atuchin*) (AACK); Zhuravlevo, 08.vii.2006, 11 ex. (*A. Atuchin*) (AACK); Azhendarovo, 01–05.vi.2014, 1 ex. (*A. Korshunov*) (EGCB).

**Distribution.** All over Palearctic.

**Ph. (*Phyllosecta*) *polaris*** (J.S. Schneider, 1886)

**Literature data.** KUZNETSKY ALATAU: The southern part of the western macroslope (Mikhailov, 1996).

**Distribution.** Russia: E Siberia. – Mongolia, North Korea.

**P. (*Phyllosecta*) *vitellinae*** (Linnaeus, 1758)

**Material examined.** KUZNETSK DEPRESSION: Kemerovo, 21.vi.1991, 1 ex. (*A. Atuchin*) (AACK); SALAIR RIDGE: Sary-Chumysh, vii.2002, 12 ex. (*A. Atuchin*) (AACK); KUZNETSKY ALATAU: Balyksa, 07.vii.2004, 2 ex. (*A. Atuchin*) (AACK); GORNAYA SHORIA: Telbes, 12.vii.2003, 1 ex. (*I. Fitz*) (EGCB); Mundybash, 02.vii.2005, 5 ex. (*A. Atuchin*) (AACK).

**Distribution.** All over Palearctic.

## PRASOCURINA Reitter, 1913

**PHAEDON** Latreille, 1829

**P. *armoraciae*** (Linnaeus, 1758)

**Material examined.** KUZNETSK DEPRESSION: Sukhaya Rechka, 08.vi.1999, 1 ex. (*D. Sushchev*) (DECK); Azhendarovo, 10–20.vii.2008, 8 ex. (*A. Korshunov*) (EGCB); Fedorovo Lake, 31.vii.2009, 1 ex. (*D. Efimov*) (EGCB); Mozzhukha, 09.vi.2013, 1 ex. (*D. Efimov*) (EGCB); GORNAYA SHORIA: Sheregesh, 04.vii.2000, 1 ex. (*A. Atuchin*) (AACK).

**Literature data.** KUZNETSKY ALATAU: Kuznetsk Alatau Nature Reserve (Cadastral..., 2017).

**Distribution.** Russia: European part, Siberia east to Yakutia. – N Central and E Europe, Mountains of S Kazakhstan and Central Asia.

**P. *cochleariae*** (Fabricius, 1792)

**Material examined.** GORNAYA SHORIA: Sheregesh, 02.vii.2001, 2 ex. (*A. Atuchin*) (AACK); KUZNETSK DEPRESSION: Prokopyevsk, 31.vii.1999, 1 ex. (*A. Atuchin*) (AACK); Azhendarovo, 10–20.vii.2008, 8 ex. (*A. Korshunov*) (EGCB).

**Literature data.** KUZNETSKY ALATAU: Kuznetsk Alatau Nature Reserve (Cadastral..., 2017).

**Distribution.** Russia: European part, W Siberia, Far East. – Europe, Turkey, Kazakhstan, Mongolia.

**PRASOCURIS** Latreille, 1802

**Prasocuris (*Hydrothassa*)** Thomson C.G., 1859

**P. (*Hydrothassa*) *marginella*** (Linnaeus, 1758)

**Material examined.** KUZNETSK DEPRESSION: Azhendarovo, 10–20.vii.2008, 7 ex. (*A. Korshunov*) (EGCB); Mozzhukha, 13.vi.2009, 1 ex. (*D. Efimov*) (EGCB).

**Literature data.** KUZNETSKY ALATAU: Kuznetsk Alatau Nature Reserve (Cadastral..., 2017).

**Distribution.** Russia: European part, W and E Siberia. – Europe.

**Prasocuris (*Prasocuris*)** Latreille, 1802

**P. (*Prasocuris*) *phellandrii*** (Linnaeus, 1758)

**Material examined.** KUZNETSK DEPRESSION: Prokopyevsk, 07.vi.2000, 1 ex. (*A. Atuchin*) (AACK); Azhendarovo, 10–20.vii.2008, 1 ex.; 01–05.vi.2014, 1 ex. (*A. Korshunov*) (EGCB); Mozzhukha, 30.v.2009, 1 ex. (*A. Korshunov*) (DECK); KUZNETSKY ALATAU: Kazanovka, 26.v.2008, 1 ex. (*S. Dementev*) (ABCZ); SALAIR RIDGE: 7 km SW Guryevsk, 08.vii.2007, 1 ex. (*N. Toropova*) (DECK).

**Distribution.** Russia: European part, W and E Siberia. – Europe, Turkey, Japan.

**DORYPHORINI** Motschulsky, 1860

**CHRYSOLININA** Chen S.-H., 1936

**CHRYSOLINA** Motschulsky, 1860

**Chrysolina (*Anopachys*)** Motschulsky, 1860

**C. (*Anopachys*) *aurichalcea*** (Mannerheim, 1825)

**Material examined.** KUZNETSK DEPRESSION: Prokopyevsk, 17.viii.2000, 1 ex. (*A. Atuchin*) (AACK); Azhendarovo, 27.vii.2008, 1 ex. (*D. Efimov*) (DECK); KUZNETSKY ALATAU:



Balyksa, 08.vii.2004, 2 ex. (*E. Kudryashova*) (EGCB); GORNAYA SHORIA: Mundybash, 04.vii.2005, 1 ex. (*A. Zhuravleva*) (EGCB); Mundybash, 02–09.vii.2005, 7 ex. (*A. Atuchin*) (AACK).

**Distribution.** Russia: European part, W and Middle Siberia, Altai, Yakutia, Sakhalin. – Kazakhstan, Mongolia, China (Hebei, Jilin, Shanghai), N Korea, Japan.

*C. (Anopachys) eurina* (Frivaldszky, 1883)

**Material examined.** KUZNETSK DEPRESSION: Berezovo, 16.vii.2006, 9 ex. (*A. Atuchin*) (AACK); KUZNETSKY ALATAU: Balyksa, 06–08.vii.2004, 14 ex. (*A. Atuchin*) (AACK); GORNAYA SHORIA: Telbes, 07–08.vii.2003, 2 ex. (*A. Atuchin*) (AACK); Mundybash, 02–11.vii.2005, 9 ex. (*A. Atuchin*) (AACK).

**Literature data.** KUZNETSK DEPRESSION: Kemerovo Region, Kemerovo, 14.vii.2002 (*Yu. Mikhailov*) (Mikhailov & Atuchin, 2006)

**Distribution.** Russia: Central European part, W Siberia. – Austria, Czech Republic, Hungary, Romania, Slovakia.

*Chrysolina (Bechynia) Bourdonne*, 1977

*C. (Bechynia) substrangulata* Bourdonne, 1986

= *C. (Bechynia) montana* auct.

**Material examined.** KUZNETSKY ALATAU: Chemodan Mt., 01.vii.96, 1 ex. (*N. Demidenko*) (EGCB); Luzhba, 04–14.vii.1997, 1 ex. (*D. Efimov*) (EGCB); GORNAYA SHORIA: Zelenaya Mt., 04.vii.2000, 3 ex. (*D. Efimov*) (EGCB); Mustag Mt., 18–19.vi.2013, 1 ex. (*A. E. Kostyunin*) (EGCB).

**Literature data.** KUZNETSKY ALATAU: Kemerovo Reg. (Tigirtish Range, Nizhny Tayzhasu; Bolshoy Zub Mt.; Belsu River valley; Dvuglavaya Mt.; Kugutu Mt.); Khakassia (Shaman Range; Abakan Range; 1 km S Kommunar vill.; 30 km NW Chernoye Ozero); GORNAYA SHORIA: Kemerovo Reg. (Mustag Mt.; 3 km NNE Sheregesh, Zelenaya Mt.) (Mikhailov, 2009).

**Distribution.** Russia: Altai, Khakassia, Kemerovo Region (Mikhailov, 2009).

*Chrysolina (Chalcoidea) Motschulsky*, 1860

*C. (Chalcoidea) marginata waldheimi* Kippenberg, 2010

**Material examined.** KUZNETSK DEPRESSION: Kemerovo, 12.vii.1993, 1 ex. (KSUC); Podyakovo, 03–18.vi.1994, 6 ex. (KSUC); Prokopyevsk, 18.vi.2000, 1 ex. (*A. Atuchin*) (AACK); Zhuravlevo, 27.vi.2006, 2 ex. (*A. Atuchin*) (AACK); Kokuj, 24.vii.2014, 1 ex. (*D. Efimov*) (EGCB); Krivoy Uskat River, 21.viii.2014, 1 ex. (*D. Efimov*) (EGCB); GORNAYA SHORIA: Telbes, 08.vii.2003, 2 ex. (*A. Atuchin*) (AACK).

**Literature data.** KUZNETSKY ALATAU: Kuznetsk Alatau Nature Reserve (Cadastral..., 2017).

**Distribution.** Russia: Siberia. – C Asia, NW China, N Mongolia

*Chrysolina (Chrysocrosita) Bechyne*, 1950

*C. (Chrysocrosita) jakowlewi* (Weise, 1894)

**Material examined.** KUZNETSKY ALATAU: Abakan Range, 20.viii.2015, 3 ex. (*E. Gorilyy*) (DECK).

**Distribution.** Russia: Krasnoyarsk Krai, Khakassia, Tuva (Mikhailov, 2008).

*Chrysolina (Chrysolina) Motschulsky*, 1860

*C. (Chrysolina) staphylaea* (Linnaeus, 1758)

**Material examined.** KUZNETSK DEPRESSION: Azhendarovo, 10–20.vii.2008, 5 ex. (*A. Korshunov*) (EGCB).

**Literature data.** KUZNETSKY ALATAU: Kuznetsk Alatau Nature Reserve (Cadastral..., 2017).

**Distribution.** All over Holarctic.

*Chrysolina (Chrysomorpha) Motschulsky*, 1860

*C. (Chrysomorpha) cerealis megerlei* (Fabricius, 1801).

**Material examined.** KUZNETSKY ALATAU: Tambar, 13.viii.2005, 1 ♂ (*D. Efimov*) (EGCB).

**Distribution.** Russia: European part, Urals, W Siberia – Most part of Europe, Asia Minor, Caucasus, Kazakhstan.

*Chrysolina (Colaphosoma)* Motschulsky, 1860

*C. (Colaphosoma) sturmi* (Westhoff, 1882)

**Material examined.** KUZNETSKY ALATAU: Makaraksky, 03.vii.2007, 3 ex. (*A. Atuchin*) (AACK); KUZNETSK DEPRESSION: Mozzhukha, vii.2001, 2 ex. (*A. Korshunov*) (AACK).

**Literature data.** KUZNETSKY ALATAU: Kuznetsk Alatau Nature Reserve (Cadastral..., 2017).

**Distribution.** Russia: European part, Siberia – Europe, Kazakhstan.

*Chrysolina (Erythrochrysa)* Bechyne, 1950

*C. (Erythrochrysa) polita* (Linnaeus, 1758)

**Material examined.** KUZNETSK DEPRESSION: Shabanovo, 29.vi.1998, 2 ex. (KSUC); Podyakovo, 03–13.vii.1998, 3 ex.; 1.vii.2001, 3 ex. (KSUC); Kemerovo, 20.vii.2002, 1 ex. (KSUC); Smyshlyaev, 16.vi.2005, 1 ex. (*A. Atuchin*) (AACK); Kemerovo, 30.vi.2005, 1 ex. (*E. Saveljeva*) (EGCB); Mozzhukha, 06.viii.2006, 1 ex. (*D. Efimov*) (EGCB); KUZNETSKY ALATAU: Balyksa, 03.vii.2004, 1 ex. (*A. Atuchin*) (AACK); Makaraksky, 02–08.vii.2007, 1 ex. (*T. Platonova*) (EGCB); SALAIR RIDGE: Sary-Chumysh, vi.2002, 23 ex. (*A. Atuchin*) (AACK); GORNAYA SHORIA: Kuzedeevo, 07.vii.1996, 2 ex. (KSUC); Telbes, 07–08.vii.2003, 28 ex. (*A. Atuchin*) (AACK); Telbes, 12.vii.2003, 1 ex. (*I. Fitz*) (EGCB).

**Distribution.** Russia: European part, Urals, Altai, W Siberia. – Europe, Cyprus, Turkey, Lebanon, Syria, Kyrgyzstan, Uzbekistan, Kazakhstan, Mongolia.

*Chrysolina (Euchrysolina)* Bechyne, 1950

*C. (Euchrysolina) graminis* (Linnaeus, 1758)

**Material examined.** KUZNETSKY ALATAU: Luzhba, 04–14.vii.1997, 1 ex. (*D. Efimov*) (EGCB); Balyksa, 08.vii.2004, 2 ex. (*A. Atuchin*) (AACK); GORNAYA SHORIA: Sheregesh, vii.2001, 2 ex. (KSUC); Telbes, 05.vii.2003, 1 ex. (*A. Atuchin*) (AACK); Mundybash, 02–09.vii.2005, 2 ex. (*A. Atuchin*) (AACK); Mustag Mt., 18–19.vi.2013, 1 ex. (*A. Kostyunin*) (EGCB).

**Distribution.** Russia: European part, Urals, W and Middle Siberia, Yakutia.– Europe, Kazakhstan, C. Asia, Mongolia.

*Chrysolina (Fastuolina)* Warchałowski, 1991

*C. (Fastuolina) fastuosa* Scopoli, 1763

**Material examined.** KUZNETSK DEPRESSION: Podyakovo, 03–13.vii.1998, 1 ex. (KSUC); Prokopyevsk, 15.viii.2000, 1 ex. (*A. Atuchin*) (AACK); Ust-Sosnovo, 26.vii.2001, 1 ex. (KSUC); Krasnoye Selo, 12.vii.2004, 1 ex. (*A. Atuchin*) (AACK); Novostroika, 17.vi.2005, 1 ex. (*A. Atuchin*) (AACK); Zhuravlevo, 30.vi.2006, 2 ex. (*A. Atuchin*) (AACK); Tanaevo Lake, 30.vi.2006, 1 ex. (*D. Sidorov*) (EGCB); Azhendarovo, 06.viii.2006, 2 ex. (*D. Sidorov*) (EGCB); Mozzhukha, 30.v.2009, 1 ex. (*D. Efimov*) (EGCB); Staraya Balakhonka, 16.vi.2012, 1 ex. (*D. Efimov*) (EGCB); SALAIR RIDGE: Gorskino, 09.vii.2009, 1 ex. (*A. Topolya*) (EGCB); GORNAYA SHORIA: Sheregesh, 04–10.vii.2000, 5 ex. (KSUC); Mundybash, 04–08.vii.2005, 1 ex. (*D. Mogilina*) (EGCB); Telbes, 07–08.vii.2003, 2 ex. (*A. Atuchin*) (AACK); Tashtagol, 14.viii.2004, 1 ex. (*Yu. Budaeva*) (EGCB).

**Literature data.** KUZNETSKY ALATAU: Kuznetsk Alatau Nature Reserve (Cadastral..., 2017).

**Distribution.** Russia: European part, Urals, Siberia.– Europe, Caucasus, Kazakhstan, Afghanistan, Asia Minor, Mongolia.

*Chrysolina (Heliostola)* Motschulsky, 1860

*C. (Heliostola) gibbipennis* (Faldermann, 1835)

= *C. (Heliostola) schewyrewi* Jacobson, 1895

**Material examined.** KUZNETSK DEPRESSION: Azhendarovo, 10–20.vii.2008, 5 ex. (*A. Korshunov*) (EGCB); Krekovo, 14.viii.2011, 2 ex. (*D. Efimov*) (EGCB); Tebenkovka, viii.2016, 3 ex. (*D. Efimov*) (EGCB); KUZNETSKY ALATAU: Chemoan Mt., 19.vii.1990, 1 ex. (*N. Demidenko*) (DECK); Luzhba, 07.1997, 4 ex. (KSUC); Makaraksky, 01–09.vii.2007, 1 ex. (*S. Dronova*) (EGCB); Osinovka, 30.vi.2016, 3 ex. (*D. Efimov*) (EGCB); GORNAYA SHORIA: Kuzedeevo, 07.vii.1996, 1 ex. (KSUC); Sheregesh, 10.vii.2000, 1 ex.; 14.vii.2000, 1 ex.; 04–11.vii.2001, 3 ex. (KSUC); Mustag Mt., 19.vii.2001, 1 ex. (*D. Efimov*) (EGCB).

**Literature data.** KUZNETSKY ALATAU: Khakassia (Terensug river valley, 7–20 km NE Balyksa; Abakan Range; GORNAYA SHORIA: Kemerovo Reg., Mustag Mt. (Mikhailov, 2009).

**Distribution.** Russia: Altai, Nobosibirsk Region, Kemerovo Region, Khakassia, Krasnoyarsk Krai. – E Kazakhstan (Mikhailov, 2009).

*Chrysolina (Hypericia)* Bedel, 1899

*C. (Hypericia) difficilis* (Motschulsky, 1860)

**Material examined.** GORNAYA SHORIA: Mundybash, 05.vii.2005, 1 ex. (*A. Atuchin*) (AACK).

**Distribution.** Russia: Altai, Sayans.

*C. (Hypericia) hyperici* (Forster, 1771)

**Material examined.** KUZNETSK DEPRESSION: Mozzhukha, 06.viii.2006, 2 ex. (*A. Korshunov*) (EGCB).

**Literature data.** KUZNETSKY ALATAU: Kuznetsk Alatau Nature Reserve (Cadastral..., 2017).

**Distribution.** Russia: European part, W Siberia.– Europe, Turkey, Uzbekistan, Kazakhstan. Australia, Canada, USA.

*Chrysolina (Jeanclaudia)* Mikhailov, 2009

*C. (Jeanclaudia) neotibialis* Kippenberg, 2010

**Literature data.** KUZNETSK DEPRESSION: Kemerovo Region, Topki (Mikhailov, 2009).

**Distribution.** Russia: Krasnoyarsk Krai, Khakassia, Kemerovo Region (Mikhailov, 2008).

*C. (Jeanclaudia) undulata* (Gebler, 1833)

**Material examined.** KUZNETSK DEPRESSION: Pyanowo (ZIN).

**Literature data.** KUZNETSKY ALATAU: Kuznetsk Alatau Nature Reserve (Cadastral..., 2017).

**Distribution.** Russia: S Siberia. – Kazakhstan.

*Chrysolina (Lithopteroides)* Strand, 1935

*C. (Lithopteroides) exanthematica* (Wiedemann, 1821)

**Material examined.** KUZNETSK DEPRESSION: Podyakovo, 01.vii.1993, 1 ex.; 20.vi.1994, 2 ex.; 30.vi.1994, 1 ex. (KSUC); Prokopyevsk, 28.vi.1997, 1 ex. (*A. Atuchin*) (AACK); Tom valley (right bank), 04.v.1999, 1 ex. (*D. Efimov*) (EGCB); Pacha, 19.vii.2001, 1 ex. (*D. Efimov*) (DECK); Mozzhukha, 23.v.2010, 1 ex. (*D. Efimov*) (IZCS); Kemerovo, 11.viii.2015, 2 ex. (*D. Efimov*) (DECK); Luchshevo, 25.viii.2015, 1 ex. (*D. Efimov*) (EGCB).

**Distribution.** Russia: W and E Siberia, Far East.– Afghanistan, China, India, Mongolia, Japan, Korea, Nepal, Vietnam.

*Chrysolina (Pleurosticha)* Motschulsky, 1860

*C. (Pleurosticha) arctoalpina* Mikhailov, 2006

**Literature data.** KUZNETSKY ALATAU: Kemerovo Reg. (Rybnoye Lake); Khakassia (Bobrovaya Mt.) (Mikhailov, 2006).

**Distribution.** Russia: Khakassia, Kemerovo Region (Mikhailov, 2006).

**Note:** Endemic species of Kuznetsky Alatau.

*C. (Pleurosticha) sylvatica* (Gebler, 1823)

**Material examined.** KUZNETSK DEPRESSION: Tom valley, 29.vi.1991, 1 ex. (*A. Atuchin*) (AACK); Osinovka, 15.vi.2001, 1 ex. (*A. Korshunov*) (AACK); Azhendarovo, 10–20.vii.2008, 1 ex. (*A. Korshunov*) (EGCB); KUZNETSKY ALATAU: Chemodan Mt., 01.vii.1996, 1 ex. (*N. Demidenko*) (EGCB); Chemodan Mt., 20.vi.1996, 1 ex. (*E. Trubina*) (DECK); Chemodan Mt., vii.1997, 1 ex. (*D. Sushchev*) (EGCB); Stanovoy Range, 16.viii.1990, 1 ex. (*N. Demidenko*) (EGCB); Shat River, 10.vii.2000, 1 ex. (*S. Nenilin*) (EGCB); GORNAYA SHORIA: Kuzedeevo, 07.vii.1996, 1 ex. (*A. Atuchin*) (AACK); Mustag Mt., 11.vii.2001, 1 ex. (*D. Efimov*) (EGCB); Zelenaya Mt., 05.vii.2001, (*D. Efimov*) (EGCB).

**Literature data.** KUZNETSKY ALATAU: Kemerovo Reg. (Krasnaya vill.; Polutornik vill.); Khakassia (Shaman Range; Abacan Range; Choochek Range). GORNAYA SHORIA: Kemerovo Reg. (Mustag Mt.) (Mikhailov, 2006).

**Distribution.** Russia: Altai, Khakassia, Kemerovo Region, Tuva, Buryatia, Krasnoyarsk Krai (Mikhailov, 2006).

*Chrysolina (Stichoptera)* Motschulsky, 1860

*C. (Stichoptera) sanguinolenta* (Linnaeus, 1758)

**Material examined.** KUZNETSK DEPRESSION: Podyakovo, 30.vi.1993, 2 ex. (KSUC); Anzhero-Sudzhensk, 22.vii.1995, 1 ex. (*A. Atuchin*) (AACK); Prokopyevsk, viii.1997, 1 ex. (*A.*

*Atuchin*) (AACK); Shabanovo, 28.vi.1998, 2 ex. (KSUC); Polysaev, 25.vi.2000, 2 ex. (KSUC); Mazurovo, 31.viii.2001, 1 ex. (*D. Sushchev*) (AACK); Azhendarovo, 10–20.vii.2008, 1 ex. (*A. Korshunov*) (EGCB).

**Literature data.** KUZNETSKY ALATAU: Kuznetsk Alatau Nature Reserve (Cadastral..., 2017).

**Distribution.** All over Palearctic.

**Chrysolina (Timarchoptera)** Motschulsky, 1860

**C. (Timarchoptera) haemochlora** (Gebler, 1823)

**Material examined.** KUZNETSK DEPRESSION: Azhendarovo, 10–20.vii.2008, 3 ex. (*A. Korshunov*) (EGCB); Berezovka, 14.v.2017, 1 ex. (*D. Efimov*) (EGCB); KUZNETSKY ALATAU: Balyksa, vii.2004, 3 ex. (*A. Atuchin*) (AACK); Makaraksky, 01–09.vii.2007, 1 ex. (*S. Dronova*) (EGCB); Makaraksky, 10.vii.2007, 1 ex. (*K. Zhulejko*) (EGCB); Luzhba, 04.vii.2016, 1 ex. (*Yu. Volkova*) (EGCB); GORNAYA SHORIA: Kuzedeevo, 07.vii.1996, 1 ex. (*A. Atuchin*) (AACK); Sheregesh, vii.2001, 2 ex. (KSUC); Telbes, 08.vii.2003, 5 ex. (*A. Atuchin*) (AACK); Mundybash, 04–08.vii.2005, (*D. Mogilina*) (EGCB); Kondoma River (right bank), 08.vi.2011, (*D. Sidorov*) (EGCB).

**Distribution.** Russia: Altai, Khakassia, Kemerovo Region, Tuva, Buryatia, Krasnoyarsk Krai.– Mongolia.

**Chrysolina (Zeugotaenia)** Motschulsky, 1860

**C. (Zeugotaenia) limbata** Fabricius, 1775

**Material examined.** KUZNETSK DEPRESSION: Sapogovo, 29.vi.1995, 1 ex. (*A. Atuchin*) (AACK); Zhuravlevo, 30.vi.2006, 4 ex. (*A. Atuchin*) (AACK); Belovo, 30.vii.2006, 1 ex. (*D. Efimov*) (EGCB); Kokuj, 24.vii.2014, 2 ex. (*D. Efimov*) (EGCB); Beregovaya, 15.v.2015, 1 ex. (*D. Efimov*) (EGCB); Kemerovo, 15.v.2009, 2 ex. (*D. Efimov*) (EGCB).

**Literature data.** KUZNETSKY ALATAU: Kuznetsk Alatau Nature Reserve (Cadastral..., 2017).

**Distribution.** Russia: European part, south of W Siberia.– Europe, Caucasus, N. Kazakhstan, Turkey.

**OREINA** Chevrolat, 1836

**O. sulcata basilea** (Gebler, 1823)

**Material examined.** KUZNETSK DEPRESSION: Podyakovo, 07.vii.1988, 1 ex.; 03.vii.1990, 1 ex.; 29.vi.1991, 1 ex.; 04–11.vii.1991, 1 ex.; 30.vi.1992, 1 ex.; 26.vi.1993, 1 ex.; 01–09.vii.1993, 5 ex. (KSUC); Anzhero-Sudzhensk, 14.viii.1991, 1 ex. (KSUC); Mozzhukha, 26.vi.1994, 1 ex. (KSUC); Razvedchik, 20.viii.1995, 1 ex. (KSUC); Kemerovo, 26–28.vi.1996, 5 ex. (KSUC); Chistugash, 19.vi.2005, 1 ex. (*A. Atuchin*) (AACK); Zhuravlevo, 30.vi.2006, 2 ex. (*A. Atuchin*) (AACK); Osinovka, 30.vi.2016, 3 ex. (*D. Efimov*) (EGCB); KUZNETSKY ALATAU: Chemodan Mt., 16.vi.1996, 2 ex.; 18.vi.1996, 5 ex. (KSUC); Luzhba, 14.vi.1997, 11 ex. (KSUC); Luzhba, 08.vii.1997, 5 ex. (*A. Atuchin*) (AACK); Balyksa, 02–05.vii.2004, 7 ex. (*A. Atuchin*) (AACK); SALAIR RIDGE: Kostenkovo, 15.viii.1990, 1 ex. (KSUC); Sary-Chumysh, 06.vii.2002, 2 ex. (*A. Atuchin*) (AACK); GORNAYA SHORIA: Sheregesh, 06.vii.2001, 5 ex. (*A. Atuchin*) (AACK); Mundybash, 02.vii.2005, 9 ex. (*A. Atuchin*) (AACK); Telbes, 03.vii.2003, 5 ex. (*A. Atuchin*) (AACK).

**Distribution.** Russia: south of W Siberia and E Siberia– E Kazakhstan.

**DORYPHORINA** Motschulsky, 1860

**LEPTINOTARSA** Chevrolat, 1836

**L. decemlineata** (Say, 1824)

**Material examined.** KUZNETSK DEPRESSION: Taradanovo, 17.vi.2000, 1 ex. (KSUC); Sukhaya Rechka, 21.vii.2001, 1 ex. (KSUC); Mazurovo, 05.ix.2001, 4 ex. (KSUC); Silino, 16.vii.2002, 2 ex. (KSUC); GORNAYA SHORIA: Telbes, 02.vii.2003, 5 ex. (*A. Atuchin*) (AACK).

**Literature data.** KUZNETSKY ALATAU: Kuznetsk Alatau Nature Reserve (Cadastral..., 2017).

**Distribution.** All over Holarctic.

**ENTOMOSCELINI** Reitter, 1913**COLAPHELLUS** Weise, 1916**C. foveolatus** (Gebler, 1848)

**Material examined.** KUZNETSKY ALATAU: Cherny Voron Mt., 07.vii.2009, 2 ♀ 1 ♂ (*A. Korshunov*) (EGCB).

**Distribution.** Russia: S and Middle Siberia. – Mongolia.

**CYSTOCNEMIS** Motschulsky, 1860**C. discoidea** (Gebler 1830)

**Material examined.** KUZNETSKY ALATAU: Makaraksky, 04.vii.2007, 1 ex. (*A. Atuchin*) (AACK).

**Distribution.** Russia: Altai.– E Kazakhstan (Mikhailov, 2013).

**Notes:** The specimens are transitional from nominative subspecies to subspecies *oreas* Mikhailov, 2013 (Mikhailov, 2013).

**ENTOMOSCELIS** Chevrolat, 1836**E. adonidis** (Pallas, 1771)

**Material examined.** KUZNETSK DEPRESSION: Kasma River, 30.vi.1995, 2 ex. (*A. Atuchin*) (AACK); Izvestkovy, 29.vi.2009, 3 ex. (*N. Teplova*) (DECK); Karakan Range, 15.viii.2014, 1 ex. (*D. Efimov*) (EGCB).

**Literature data.** KUZNETSKY ALATAU: Kuznetsk Alatau Nature Reserve (Cadastral..., 2017).

**Distribution.** Russia: European part, W and E Siberia. – Europe, Kazakhstan, Mongolia, China, Japan, N Africa.

**GONIOCTENINI** Motschuksky, 1860**GONIOCTENA** Chevrolat, 1836**Gonioctena (Cercyonops)** Jacobson, 1901**G. (Cercyonops) caraganae** (Gebler, 1823)

**Material examined.** KUZNETSK DEPRESSION: Mozhukha, 08.vii.1997, 1 ex. (*A. Atuchin*) (AACK); Azhendarovo, 10–20.vii.2008, 1 ex. (*A. Korshunov*) (EGCB); GORNAYA SHORIA: Podkatun, 06.vii.2003, 2 ex. (*A. Korshunov*) (EGCB); Telbes, 12.vii.2003, 1 ex. (*I. Fitz*) (EGCB); Mundybash, 04–08.vii.2005 (*D. Mogilina*) (EGCB); Ust-Kabyrza, 02.vii.2008, 1 ex. (*A. Pirogova*) (DECK).

**Literature data.** KUZNETSKY ALATAU: Shaman Range (Jacobson, 1901).

**Distribution.** Russia: W and E Siberia, Far East.– Mongolia.

**Gonioctena (Gonioctena)** Chevrolat, 1836**G. (Gonioctena) decemnotata** (Marsham, 1802)

**Material examined.** KUZNETSKY ALATAU: Balyksa, 06.vii.2004, 1 ex. (*A. Atuchin*) (AACK).

**Distribution.** All over Palearctic.

**G. (Gonioctena) flavicornis** (Suffrian, 1851)

**Material examined.** KUZNETSKY ALATAU: Balyksa, 03–08.vii.2004, 4 ex. (*A. Atuchin*) (AACK); Polutornik, 07.vii.2009, 1 ex. (*A. Tsepokina*) (EGCB).

**Literature data.** KUZNETSKY ALATAU: Shaman Range (Jacobson, 1901).

**Distribution.** Russia: W and E Siberia.– Mongolia.

**G. (Gonioctena) gracilicornis** (Kraatz, 1879)

**Material examined.** KUZNETSK DEPRESSION: Azhendarovo, 10–20.vii.2008, 1 ex. (*A. Korshunov*) (EGCB); KUZNETSKY ALATAU: Luzhba, 04–14.vii.1997, 2 ex. (*D. Efimov*) (EGCB); Balyksa, 03.vii.2004, 2 ex. (*A. Atuchin*) (AACK); Makaraksky, 01–09.vii.2007, 1 ex. (*S. Dronova*) (EGCB); Makaraksky, 10.vii.2007, 1 ex. (*K. Zhulejko*) (EGCB); GORNAYA SHORIA: Mundybash, 04–08.vii.2005, 2 ex. (*A. Atuchin*) (AACK).

**Distribution.** Russia: E Siberia, Far East – Korea.

**G. (*Gonioctena*) *linnaeana*** (Schrank, 1781)

**Material examined.** KUZNETSK DEPRESSION: Azhendarovo, 10–20.vii.2008, 1 ex.; 1–5.vii.2014, 1 ex. (*A. Korshunov*) (EGCB); Krekovo, 17–18.vii.2009, 2 ex. (*D. Efimov*) (EGCB); Azhendarovo, 14.vii.2012, 1 ex. (*D. Efimov*) (EGCB); Sukhovo, 19.vii.2013, 1 ex. (*D. Efimov*) (EGCB); KUZNETSKY ALATAU: Balyksa, 02.vii.2004, 1 ex. (*A. Atuchin*) (AACK); SALAIR RIDGE: Sary-Chumysh, vi.2002, 2 ex. (*A. Atuchin*) (AACK); GORNAYA SHORIA: Telbes, 02.vii.2003, 21 ex. (*A. Atuchin*) (AACK); Mundybash, 04–08.vii.2005, 3 ex. (*A. Atuchin*) (AACK).

**Distribution.** Russia: European part, W and E Siberia. – Europe, Turkey, Kazakhstan, Mongolia.

**G. (*Gonioctena*) *nivosa*** (Mannerheim, 1853)

=*G. arctica* Mannerheim, 1853

=*G. affinis* (Gyllenhal, 1808)

=*G. decaspilota* (Achard, 1924)

**Material examined.** GORNAYA SHORIA: Ust-Kabyrza, 02.vii.2008, 1 ex. (*A. Pirogova*) (EGCB); Mustag Mt., 18-19.vi.2013, 1 ex. (*A. E. Kostyunin*) (EGCB); KUZNETSKY ALATAU: Balyksa, 05.vii.2004, 1 ex. (*A. Atuchin*) (AACK); Kamennaya Mt., 1 ex. (*A. Atuchin*) (AACK).

**Literature data.** Kuznetsky Alatau: Upper Verkh. Taizhasu river; mt. Kugutu; Amzas river valley (Mikhailov, 2001).

**Distribution.** Russia: North European Territory, W and E Siberia, Far East, Sakhalin. – Europe, Kazakhstan, Mongolia, Canada, United States (Alaska, Montana).

**G. (*Gonioctena*) *viminalis*** (Linnaeus, 1758)

**Material examined.** KUZNETSKY ALATAU: Balyksa, 07–08.vii.2004, 1 ex. (*A. Atuchin*) (AACK); SALAIR RIDGE: Sary-Chumysh, vi.2002, 2 ex. (*A. Atuchin*) (AACK).

**Distribution.** Russia: European part, Siberia.– Europe, Caucasus, Kazakhstan, N Mongolia.

***Gonioctena* (*Goniomena*)** Motschulsky, 1860**G. (*Goniomena*) *pallida*** (Linnaeus, 1758)

**Material examined.** KUZNETSK DEPRESSION: Azhendarovo, 10–20.vii.2008, 1 ex. (*A. Korshunov*) (EGCB); Kemerovo, vi.2017, 12 ex. (*A. Atuchin*) (AACK); Krekovo, 28.v.2017, 1 ex. (*D. Efimov*) (EGCB); KUZNETSKY ALATAU: Chemodan Mt., 20.vi.1996, 2 ex. (*E. Trubina*) (DECK).

**Literature data.** KUZNETSKY ALATAU: Shaman Range (Jacobson, 1901).

**Distribution.** Russia: European part, S Urals, Novosibirsk Region, Altai, W and E Siberia.– N and Central Europe, Kazakhstan, N Mongolia.

**G. (*Goniomena*) *quinquepunctata*** (Fabricius, 1787)

**Material examined.** KUZNETSKY ALATAU: Balyksa, 02–04.vii.2004, 4 ex. (*A. Atuchin*) (AACK).

**Distribution.** All over Palearctic.

**G. (*Goniomena*) *sibirica*** (Weise, 1893)

**Material examined.** SALAIR RIDGE: Sary-Chumysh, vi.2002, 2 ex. (*A. Atuchin*) (AACK).

**Literature data.** KUZNETSKY ALATAU: Shaman Range (Jacobson, 1901).

**Distribution.** Russia: E Siberia, Far East. – Mongolia.

### Acknowledgements

The authors are sincerely grateful to A. V. Korshunov, A. E. Kostyunin, D. V. Sushchev, V. A. Polevod, N. S. Teplova, S. I. Glazyrina (Kemerovo) for their assistance in the collection of Chrysomelidae. Many thanks to R. V. Yakovlev (Barnaul) for the assistance in designing the map and to Yu. E. Mikhailov (Yekaterinburg) for valuable comments and assistance in identifying certain species.

## References

- Atuchin, A. A.** 2008a. New data on the leaf beetle *Chrysolina eurina* (Frivaldszky, 1883) (Coleoptera, Chrysomelidae) in the Kuznetsk-Salair mountains. *Entomological Review*, **88**(5): 577–578.
- 2008b. Spisok vidov listoedov (Coleoptera, Chrysomelidae) Kuznetsko-Salairskoy gornoy oblasti. *Trudy Kemerovskogo otdelenia REO*. **6**: 11–16. [In Russian].
- Cadastral information about the Kuznetsk Alatau Nature Reserve for 2013–2016. Mezhdurechensk, 2017. [In Russian]. [Online]. <http://www.kuz-alatau.ru/documents.html>
- Gus'kova, E. V., Efimov, D. A. & Korshunov, A. V.** 2016. New for the fauna of the Kemerovo region (Russia, Siberia) Leaf Beetles (Coleoptera: Chrysomelidae). *Far Eastern Entomologist*, **307**: 11–16.
- Jacobson, G. G.** 1901. Chrysomelidae Sibiriae occidentalis. *Horae Societatis Entomologicae Rossicae* **35** [1901–1902]: 73–102.
- Kostromitin, V. F.** 1965. The fauna of flea beetle (Coleoptera, Chrysomelidae, Halticinae) of Kemerovo Region. *Trudy sverdlovskogo selskohozyajstvennogo instituta*, **14**: 86–90. [In Russian].
- 1967. The fauna and biology of flea beetle (Coleoptera, Chrysomelidae, Halticinae) of Kemerovo Region. Avtoreferat dissertacii kandidata biologicheskikh nauk, 27 pp. Sverdlovsk. [In Russian].
- Kuminova, A. V.** 1950. Vegetation of the Kemerovo region 167 pp. Novosibirsk. [In Russian].
- Löbl, I. & Smetana, A. (Eds)** *Catalogue of Palaearctic Coleoptera*, **6**. 2010. Apollo Books, Stenstrup, Denmark.
- Lopatin, I. K., Aleksandrovich, O. R. & Konstantinov, A. S.** 2004. *Check List of Leaf-Beetles (Coleoptera, Chrysomelidae) of the Eastern Europe and Northern Asia* 343 pp. Olsztyn.
- Mikhailov, N. I.** 1961. Mountains of South Siberia 238 pp. Moscow. [In Russian].
- Mikhailov, Yu. E.** 1996. To ecology of Leaf Beetles (Coleoptera, Chrysomelidae) of Kuznetsky Alatau. Materials to XXXIV International Student Conference “Student and scientific and technical progress”: Biology, Novosibirsk, 125. [In Russian].
- 2001. Significance of colour polymorphism in mountain populations of abundant leaf beetles (Coleoptera, Chrysomelidae). *Pirineos*, **156**: 57–68.
- 2006. On the types and status of *Chrysolina sylvatica* (Gebler, 1823) and *Chrysolina subcostata* (Gebler, 1848) from the subgenus *Pleurosticha* Motschulsky, 1860 (Coleoptera, Chrysomelidae). *Euroasian entomological journal*, **5**(4): 292–302. [In Russian].
- 2008. Altitude distribution of leaf beetle (Coleoptera, Chrysomelidae) in the mountains of Southern Siberia. *Trudy Kemerovskogo otdelenia REO*. **6**: 79–87. [In Russian].
- 2009. New data on systematics and ecology of leaf beetles (Coleoptera, Chrysomelidae) from South Siberian mountains. *Euroasian entomological journal*, **8**(2): 177–188. [In Russian].
- 2013. To the knowledge of the leaf beetle genus *Cystocnemis* (Coleoptera, Chrysomelidae). *Entomological Review*, **93**(4): 483–495.
- Mikhailov, Yu. E. & Atuchin, A. A.** 2006. New records of leaf beetles (Coleoptera, Chrysomelidae) from West Siberia. *Euroasian entomological journal*, **5**(3): 223–244. [In Russian].
- Slipinski, S. A., Leschen, R. A. B. & Lawrence, J. F.** 2011. Order Coleoptera Linnaeus, 1758, pp. 203–208. In: Zhang, Z.-Q. (ed.) *Animal biodiversity: An outline of higher-level classification and survey of taxonomic richness*. *Zootaxa*, 3148, 237 pp.