

<https://zoobank.org/urn:lsid:zoobank.org:pub:9C3C2584-D29B-4082-AEBA-1FCA1D7D4283>

New *Cortodera* (Coleoptera, Cerambycidae) taxa from Turkey

MIKHAIL L. DANILEVSKY

A.N. Severtsov Institute of Ecology and Evolution, Russian Academy of Sciences, Leninsky prospect 33, Moscow
119071 Russia

E-mail: danilevskym1@rambler.ru, danilevsky@cerambycidae.net

Received 10 July 2016 | Accepted 22 July 2016 | Published online 23 July 2016.

Two taxa are described from Turkey: *Cortodera pumila sarigolensis* **ssp. n.** is described from Artvin province and *C. amanusensis* **sp. n.** is described from Hatay province.

A new portion of *Cortodera* specimens (149 ex.) were received by me for study from Národní Museum, Prague after the first big publication (Danilevsky, 2015) on Museum's materials. It contains 23 species and subspecies, 2 of them are described below as new.

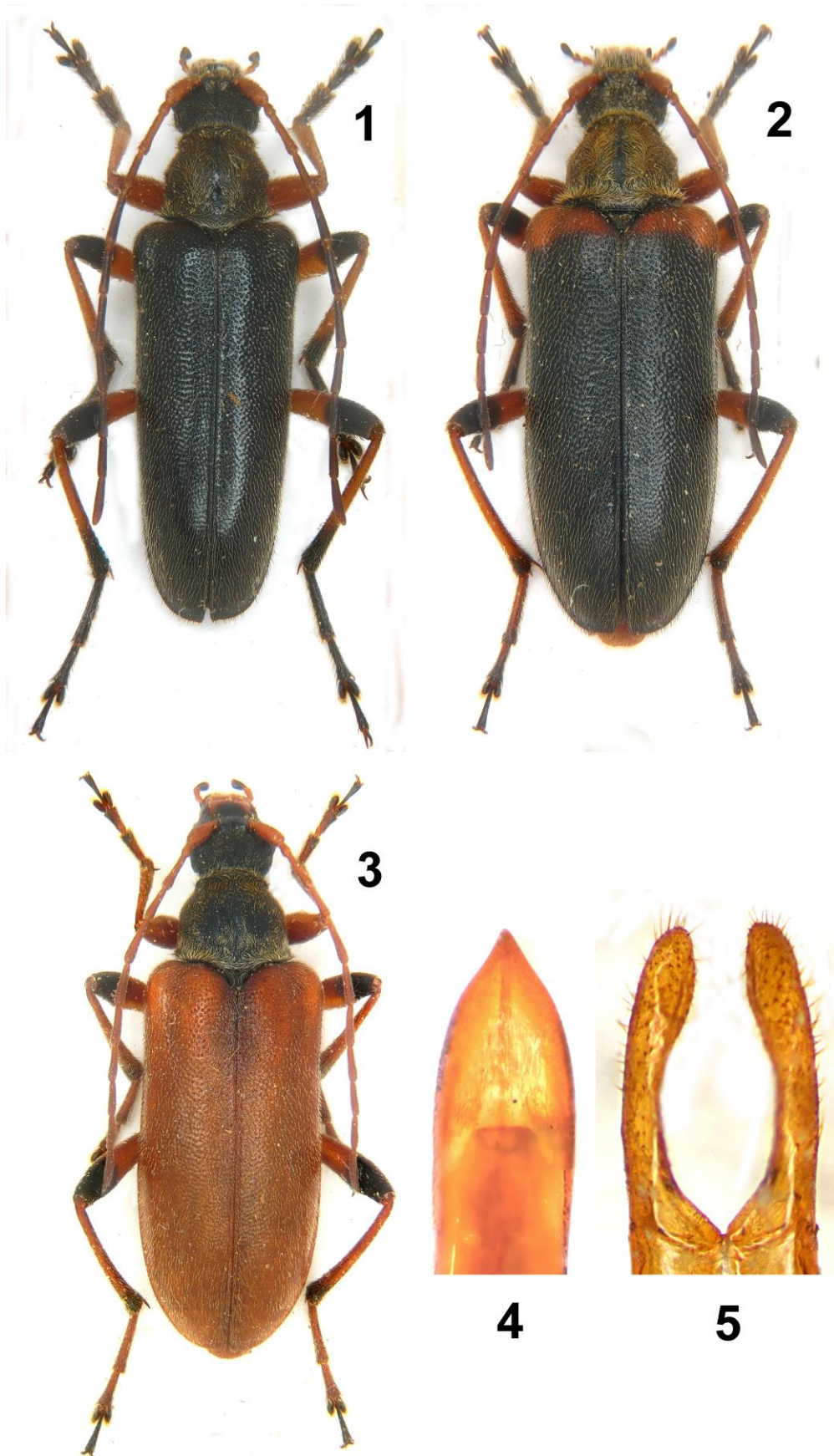
Systematics

Cortodera pumila sarigolensis **ssp. n.**

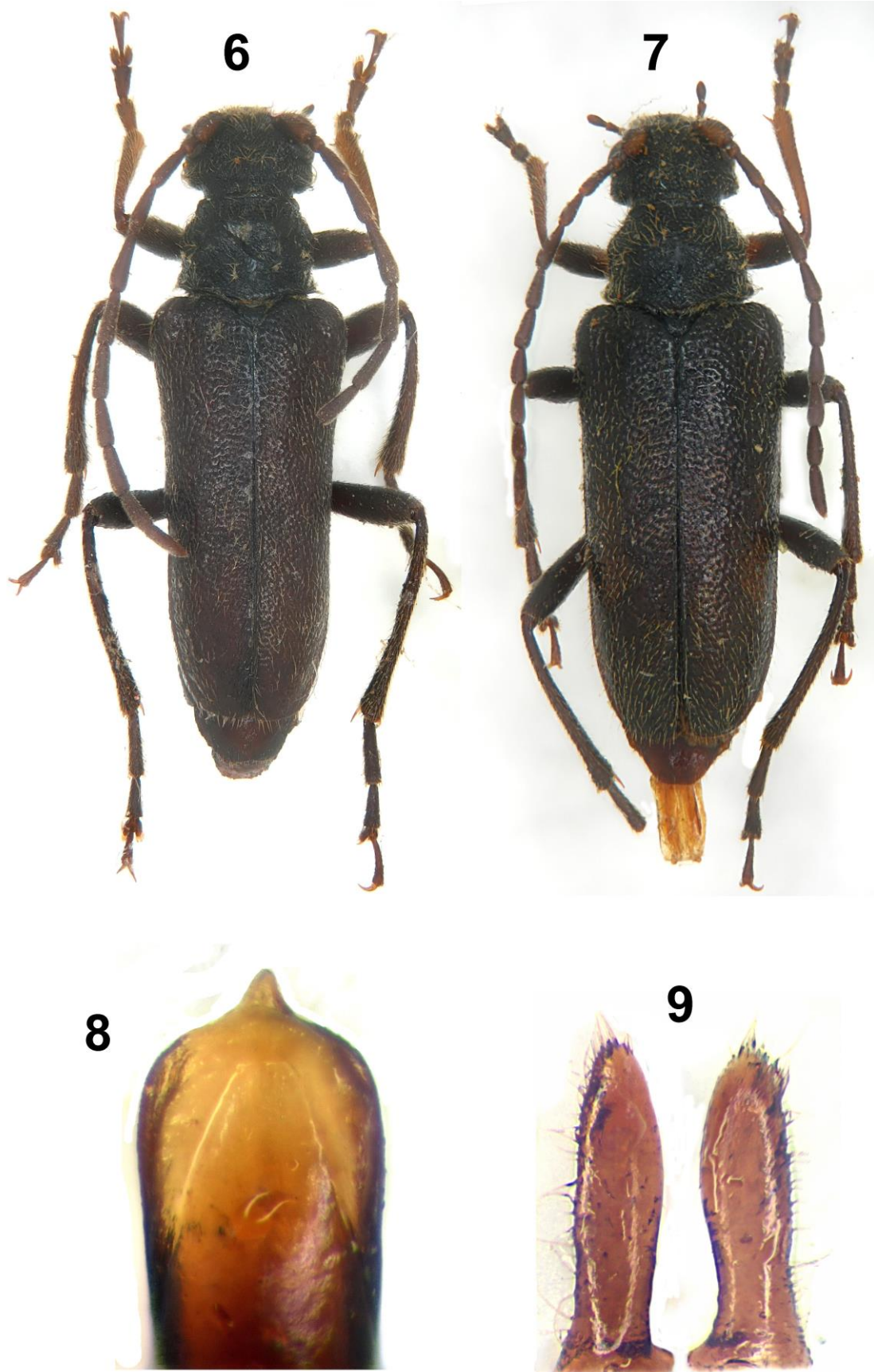
Figs. 1-5

Very nice, big subspecies, but only 1 male and 2 females available; basal areas of mouthparts, labrum and apex of clypeus are yellow-orange; apical joints of maxillary palpi in male wide, axe-like, in females – elongated; antennae in male a little shorter than body, in females – much shorter; can be totally orange yellow (female with pale elytra), or 5 basal joints orange-yellow and others – brown (female with black elytra), or 4 basal joints orange-yellow and others – brown (male); 2nd joint distinctly elongated; thorax strongly narrowed anteriorly, in male a little shorter than basal width; in females about 1.3-1.4 times shorter than basal width; pronotum with dense recumbent yellow setae arranged in two rows; with regular, very dense punctation and short narrow smooth line; scutellum black, triangular, about as long as wide; elytra in male about 2.4 times longer than basal width, in females – in 2.2-2.4. times; without erect setae, with very short recumbent pubescence; elytral punctation relatively small and very dense; elytra black (male), or orange-yellow (one female), or black with narrow orange-yellow bases (another female - unique character in the genus); legs bicolor, orange-yellow with black apices of middle and hind tibiae and femora; tarsi in male black, in females with pale basal joints; abdomen black with pale pygidium; last abdominal segments in females rounded; pygidium in male rounded, postpygidium slightly emarginated; parameres long and narrow slightly enlarged distally, aedeagus strongly sharpened; body length in male: 10.3mm, width: 3.0mm; body length in females: 12.0-12.1mm, width: 3.8-3.9mm.

Pronotal pubescence of *C. p. sarigolensis* **ssp. n.** is similar to *C. p. tournieri* Pic, 1895 (see Danilevsky, 2014), but color elytral patterns are quite unique.



Figures 1-5. *Cortodera pumila sarigolensis* ssp. n.: 1 – holotype, male; 2-3 – paratypes, females; 4 – aedeagus; 5 – parameres.



Figures 6-9. *Cortodera amanusensis* sp. n.: 6 - holotype, male; 7 – paratype, female; 8 – aedeagus; 9 – parameres.

Materials. Holotype, male, with 2 labels: 1) “NE Turkey – 29.VI.2006 / Sarigöl (N of Yusufeli) [Artvin prov.]/ 40°54'N, 41°21'E – 1421m / S.Kadlec lgt.”; 2) “ex coll. S.Kadlec / National Museum / Prague, Czech Republic” – collection of Národní Museum, Prague; paratypes, 2 females with same labels - collection of Národní Museum, Prague.

***Cortodera amanusensis* sp. n.**

Figs. 6-9

Only one male (with damaged pronotum) and three females available; small black species; anterior tibiae and tarsi lightened, as well as basal antennal joints; maxillary palpi slightly elongated; temples strongly angulated; male antennae short, reaching posterior elytral third; female antennae surpassing elytral half; 2nd antennal joint slightly elongated; 1st, 3rd and 4th joints in male about equal in length, 5th joint much longer; in females 1st joint about as long as 3rd, longer than 4th and shorter than 5th; prothorax transverse, in male about 1.3 times shorter than basal width, in females – about 1.4 times; pronotum with small dense irregular punctation, with short smooth central line, with short mixed erect and recumbent pubescence; scutellum oval, transverse or about as long as wide; elytra in male and in females about 2.1 times longer than basal width, in male slightly narrowed near middle; in females – nearly parallelsided; elytral punctation very dense, partly conjugated in transverse strokes; recumbent elytral pubescence very short, erect setae absent; posterior abdominal tergite and sternite in females rounded; pygidium in male a little emarginated, postpygidium and last sternite truncated; parameres elongated, regularly oval, aedeagus strongly widened apically pointed at apex; endophallus without spicula; body length in male: 7.0mm, width: 2.2mm; body length in females: 7.0-8.0mm, width: 2.3-2.5mm.

C. amanusensis sp. n. looks like very small *C. alpina* (Ménétriés, 1832), and male genitals are also similar to *C. alpina*; but the absence of endophallic spicula shows its species level.

Materials. Holotype, male, with 2 labels: 1) “Mts / Amanus” [Turkey, Hatay prov.]; 2) “*Cortodera / umbripennis* / Rtt. / Breuning det.” – collection of Národní Museum, Prague; paratypes, 3 females with same labels - collection of Národní Museum, Prague.

Acknowledgements

I am very grateful to Dr. Jiří Hájek (Department of Entomology, National Museum, Natural History Museum) for providing me with specimens for study.

References

- Danilevsky, M.L. (2014) *Longicorn beetles (Coleoptera, Cerambycoidea) of Russia and adjacent countries*. Part 1. Moscow: HSC, 1–522. [in Russian]
- Danilevsky, M.L. (2015) New and poorly known taxa of the genus *Cortodera* Mulsant, 1863 (Coleoptera, Cerambycidae) from South Europe and Near East. *Humanity Space, International Almanac*, 4 (5), 1034–1084.