

# Far Eastern Entomologist

Дальневосточный энтомолог

Journal published by Far East Branch  
of the Russian Entomological Society  
and Laboratory of Entomology, Federal  
Scientific Center of the East Asia  
Terrestrial Biodiversity, Vladivostok

Number 404: 1-36

ISSN 1026-051X

April 2020

<https://doi.org/10.25221/fee.404.1>

<http://zoobank.org/References/C2AC80FF-60B1-48C0-A6D1-9AA4BAE9A927>

## AN ANNOTATED CHECKLIST OF LEAF BEETLES (COLEOPTERA: CHRYSOMELIDAE) OF KOREA, WITH COMMENTS AND NEW RECORDS

H.-W. Cho<sup>1, \*</sup>, S. L. An<sup>2)</sup>

1) *Animal & Plant Research Team, Nakdonggang National Institute of Biological Resources, 137 Donam 2-gil, Sangju 37242, Republic of Korea. \*Corresponding author, E-mail: lampides@gmail.com*

2) *Division of Research, National Science Museum, 481 Daedeok-daero, Yuseong-gu, Daejeon 34143, Republic of Korea.*

**Summary.** An updated list of Chrysomelidae of Korea is provided with comments on all taxonomic, nomenclatural, and distributional changes. This paper is the first attempt to divide the distributional records of all Korean Chrysomelidae into records for North and South Korea. In total, 128 genera and 424 species are reported: 293 species in North Korea, 340 in South Korea, and 10 without precise localities in Korea; 22 species are excluded from the Korean fauna; 15 new national records from South Korea are reported, 10 of which are new to Korea.

**Key words:** Chrysomelidae, fauna, new record, taxonomy, North Korea, South Korea.

**Х. В. Чо, С. Л. Ан. Аннотированный список жуков-листоедов (Coleoptera: Chrysomelidae) Кореи с замечаниями и новыми указаниями // Дальневосточный энтомолог. 2020. N 404. С. 1-36.**

**Резюме.** Приводится обновленный список жуков-листоедов (Chrysomelidae) Кореи с таксономическим и номенклатурным изменениями и замечаниями по

распространению. Предпринята первая попытка разделения фаунистических данных по всем корейским листоедам на указания для северной и южной частей полуострова. Всего приводятся 424 вида из 128 родов, из которых 293 вида отмечены для Северной, 340 видов – для Южной Кореи, а 10 видов – из Кореи без более точного указания; 22 вид исключен из фауны Корейского полуострова; 15 видов впервые указаны для Республики Корея, из них 10 видов являются новыми для полуострова.

## INTRODUCTION

The family Chrysomelidae, commonly called leaf beetles, is one of the largest, most diverse families of Coleoptera, with approximately 39,800 species worldwide (Leschen & Beutel, 2014). They are essentially phytophagous, feeding on all parts of plants from roots to fruit, except Cryptocephalinae larvae, which specialize largely on dead plant material. The Chrysomelidae fauna of Korea is relatively well documented (e.g., Chûjô, 1940a-b, 1941a-d, 1942; Gressitt & Kimoto, 1961, 1963; Cho, 1965; Jolivet, 1973; Takizawa, 1980, 1985; Lee & An, 2001; An, 2011). Several new species have been described (Cho & Lee, 2010; Borowiec & Cho, 2011; Schöller, 2011; Cho & Borowiec, 2013; Park *et al.*, 2013a-b), and new distribution data reported (Kang *et al.*, 2013; Cho & Borowiec, 2014; Lee & Lee, 2014; Park *et al.*, 2014; Lee *et al.*, 2015; Park *et al.*, 2015; Hayashi & Cho, 2017; An, 2019) in the past decade. However, there is confusion regarding the distributions of many species, even in the Catalogue of Palaearctic Coleoptera (Löbl & Smetana, 2010) because although Korea has been divided into North and South along the 38th parallel since the Korean War (Fig. 1), most entomologists have tended to write simply ‘Korea’ for the distribution of each species. The primary objective of this paper is to compile all available data on the occurrence of individual species in North and South Korea, and provide an updated checklist of the Korean Chrysomelidae. Taxonomic and nomenclatural changes, doubtful or erroneous records, and misidentifications are commented on or corrected. Photographs of chrysomelid beetles taken in the field are also provided.

## MATERIAL AND METHODS

The list of Korean Chrysomelidae is primarily based on Lee & An (2001), An (2011), and Löbl & Smetana (2010). The specimens of the newly recorded species were identified using the identification keys of Kimoto & Takizawa (1994) and Warchałowski (2010), and deposited in the following collections: **NNIBR** – Nakdonggang National Institute of Biological Resources, Sangju, South Korea; **HCC** – Hee-Wook Cho collection, Yecheon, South Korea; and **SAC** – Seung-Lak An collection, Daejeon, South Korea. The classification of the subfamilies of Chrysomelidae used in the checklist follows the Integrated Taxonomic Information System ([https://www.itis.gov/servlet/SingleRpt/SingleRpt?search\\_topic=TSN&search\\_value=114509#null](https://www.itis.gov/servlet/SingleRpt/SingleRpt?search_topic=TSN&search_value=114509#null), accessed 30 January 2020). The names of tribes, genera, species, and subspecies are

ordered alphabetically. The distribution record for each species from Korea is divided into North and South Korea, although it is cited as “Korea” when more precise locality data are not available. Preceding the species name, an asterisk (\*) denotes species that are new to Korea, a minus sign (–) indicates species that are erroneously recorded, and a question mark (?) indicates a doubtful record. The geographic abbreviations used for the distribution are as follows: N Korea = North Korea (Democratic People's Republic of Korea); S Korea = South Korea (Republic of Korea); Korea = Korea with no precise locality.



Fig. 1. Map of the Korean Peninsula.

## RESULTS

A total of nine subfamilies, 128 genera, and 424 species from Korea are listed below. The most diverse subfamily is Galerucinae with 185 species, followed by Cryptocephalinae (60 spp.), Chrysomelinae (51 spp.), Eumolpinae (34 spp.), Cassidinae (33 spp.), Criocerinae (27 spp.), Bruchinae (21 spp.), Donaciinae (11 spp.), and Lamprosomatinae (2 spp.). There are more chrysomelid species in South Korea (340 spp.) than in North Korea (293 spp.), with 219 species occurring in both countries. Records on 10 species from Korea did not give detailed distributional data. Fifteen species new to South Korea, including 10 species new to Korea, are added based on the authors' collections, while 22 species are excluded as erroneous records. The occurrence of 16 species is regarded as doubtful, but they are still included in the list.

### CHECKLIST OF CHRYSOMELIDAE OF KOREA

#### Family Chrysomelidae Latreille, 1802

#### Subfamily Bruchinae Latreille, 1802

#### Tribe Amblycerini Bridwell, 1932

#### Genus *Spermophagus* Schoenherr, 1833

1. *Spermophagus caucasicus* Baudi di Selve, 1886 – N Korea.  
COMMENTS. Including the synonymic name *S. eous* (Lukjanovitch & Ter-Minassian, 1957).
2. *Spermophagus rufiventris* Boheman, 1833 – N & S Korea.  
COMMENTS. With its synonymic name *S. japonicus* Schilsky, 1906.

#### Tribe Bruchini Latreille, 1802

#### Genus *Acanthoscelides* Schilsky, 1905

3. *Acanthoscelides pallidipennis* (Motschulsky, 1874) – N Korea.  
COMMENTS. Introduced species.

#### Genus *Borowiecius* Anton, 1994

4. *Borowiecius ademptus* (Sharp, 1886) – N & S Korea.

#### Genus *Bruchidius* Schilsky, 1905

5. *Bruchidius comptus* (Sharp, 1886) – N & S Korea.
6. *Bruchidius coreanus* Chûjô, 1937 – N & S Korea.
7. *Bruchidius japonicus* (Harold, 1878) – N & S Korea.
8. *Bruchidius kiritschenkoi* Egorov & Ter-Minassian, 1981 – N Korea.
9. *Bruchidius lautus* (Sharp, 1886) – N & S Korea.
10. *Bruchidius lespedezae* (Iablokoff-Khnzorian, 1974) – N & S Korea.
11. *Bruchidius pilinoides* (Fåhraeus, 1839) – N & S Korea.
12. *Bruchidius urbanus* (Sharp, 1886) – N & S Korea.

#### Genus *Bruchus* Linnaeus, 1767

13. *Bruchus affinis* Frölich, 1799 – N Korea.
14. *Bruchus atomarius* (Linnaeus, 1761) – N Korea.
15. \* *Bruchus brachialis* Fåhraeus, 1839 (Fig. 2) – S Korea.  
COMMENTS. New to Korea (probably an introduced species).



MATERIAL EXAMINED. **South Korea:** Gyeongbuk Prov., Sangju, Yeonwon-dong, 36°25'8.19"N, 128°8'35.07"E, 23.V 2019, 6 ex. (NNIBR), leg. H.W. Cho; Gyeongbuk Prov., Sangju, Oedap-dong, 36°25'35.17"N, 128°11'50.92"E, 23.V 2019, 5 ex. (NNIBR), leg. H.W. Cho; Gyeongbuk Prov., Sangju, Sabeol-myeon, Geumheun-ri, 36°26'12.21"N, 128°13'18.73"E, 16.VIII 2019, 1 ex. (HCC), leg. S.K. Kim; Gyeongbuk Prov., Sangju, Sabeol-myeon, Geumheun-ri, 36°26'12.21"N, 128°13'18.73"E, 24.V 2019, 17 ex. (NNIBR), leg. H.W. Cho.

16. *Bruchus pisorum* (Linnaeus, 1758) – N & S Korea.

COMMENTS. Introduced species.

17. *Bruchus rufimanus* Boheman, 1833 – N & S Korea.

COMMENTS. Introduced species.

**Genus *Callosobruchus* Pic, 1902**

18. *Callosobruchus chinensis* (Linnaeus, 1758) (Fig. 3) – N & S Korea.

**Genus *Megabruchidius* Borowiec, 1984**

19. *Megabruchidius dorsalis* (Fåhraeus, 1839) – S Korea.

**Tribe Kytorhinini Bridwell, 1932**

**Genus *Kytorhinus* Fischer von Waldheim, 1809**

20.? *Kytorhinus caraganae* Ter-Minassian, 1960 – N Korea.

COMMENTS. Recorded from Pochon County without specimen data by Ko & Choi (2006), but its occurrence in Korea needs confirmation.

21. *Kytorhinus senilis* Solsky, 1869 – N Korea.

**Subfamily Donaciinae Kirby, 1837**

**Tribe Donaciini Kirby, 1837**

**Genus *Donacia* Fabricius, 1775**

22. *Donacia bicoloricornis* Chen, 1941 (Fig. 4) – S Korea.

23. *Donacia clavareau* Jacobson, 1906 – S Korea.

COMMENTS. Recently recorded from Paju by An (2019).

24. *Donacia flemola* Goecke, 1944 (Fig. 5) – N & S Korea.

25. *Donacia japana* Chûjô et Goecke, 1956 – N Korea.

26. *Donacia lenzi* Schönfeldt, 1888 – S Korea.

27. *Donacia provostii* Fairmaire, 1885 (Fig. 6) – N & S Korea.

28. *Donacia simplex* Fabricius, 1775 – S Korea.

– *Donacia thalassina* Germar, 1811

COMMENTS. The only record from Suwon (Chûjô, 1940a, under the name *D. impressa* Paykull, 1799) based on a single specimen is probably an error.

29. *Donacia ussuriensis* Medvedev, 1973 – N Korea.

COMMENTS. The type locality of the species is part of the Tumen River, which is the terrestrial boundary between Russia and North Korea.

**Tribe Plateumarini Böving, 1922**

**Genus *Plateumaris* Thomson, 1859**

30. *Plateumaris sericea sibirica* (Solsky, 1872) (Fig. 7) – N & S Korea.

31. *Plateumaris shirahatai* Kimoto, 1971 – S Korea.

32. *Plateumaris weisei* (Duvivier, 1885) – S Korea.

COMMENTS. Recently recorded from Yanggu County by Hayashi & Cho (2017).

**Subfamily Criocerinae Latreille, 1804**

**Tribe Criocerini Latreille, 1804**

**Genus *Crioceris* Geoffroy, 1762**

33. *Crioceris duodecimpunctata* (Linnaeus, 1758) – N & S Korea.  
34. *Crioceris quatuordecimpunctata* (Scopoli, 1763) – N & S Korea.

**Genus *Lilioceris* Reitter, 1913**

35. *Lilioceris gibba* (Baly, 1861) – Korea.  
COMMENTS. No precise locality from Korea was mentioned in the first record (Heinze, 1943), and since then no other specimens have been collected.  
36. *Lilioceris meridigera* (Linnaeus, 1758) (Fig. 12) – N & S Korea.  
37. *Lilioceris rugata* (Baly, 1865) (Fig. 13) – N & S Korea.  
COMMENTS. Misidentified as *L. gibba* (Baly, 1861) by Lee & An (2001), Lee & Cho (2006), and An (2011).  
MATERIAL EXAMINED. **South Korea:** Gangwon Prov., Jeongseon-gun, Gohan-eup, Mt. Hambaeksan, 37°9'46.40"N, 128°55'3.03"E, 6.VI 2006, 2 ex. (HCC), leg. H.W. Cho; Gangwon Prov., Hoengseong-gun, Dunnae-myeon, Sapgyo-ri, 37°32'09.7"N, 128°17'18.6"E, 20.V 2010, 3 ex. (HCC), leg. H.W. Cho; Gyeongbuk Prov., Yeongyang-gun, Cheonggi-myeon, Mt. Irwolsan, 36°48'29.7"N, 129°05'23.7"E, 30.IV 2006, 1 ex. (HCC), leg. H.W. Cho; Chungbuk Prov., Danyang-gun, Daegang-myeon, Mt. Sobaeksan, 36°54'6.37"N, 128°27'43.11"E, 15.IV 2004, 1 ex. (HCC), leg. H.W. Cho; 1 ex. (HCC), same data as preceding one except for 17.VII 2004; 1 ex. (HCC), same data as preceding one except for 24.IV 2005.  
38. *Lilioceris scapularis* (Baly, 1859) (Fig. 14) – N & S Korea.  
39. *Lilioceris sieversi* (Heyden, 1887) (Fig. 15) – S Korea.  
40. *Lilioceris sinica* (Heyden, 1887) – N & S Korea.  
– *Lilioceris subpolita* (Motschulsky, 1861)  
COMMENTS. *Lilioceris subpolita* is endemic to Japan. The record from North Korea (Cho, 1934; Kim, 1993) is probably based on misidentification of *L. rugata* or *L. sinica*.  
41.? *Lilioceris wagneri* (Jacobson, 1893) – N Korea.  
COMMENTS. The only record from Chongjin by Heinze (1943) should be confirmed by recent material.

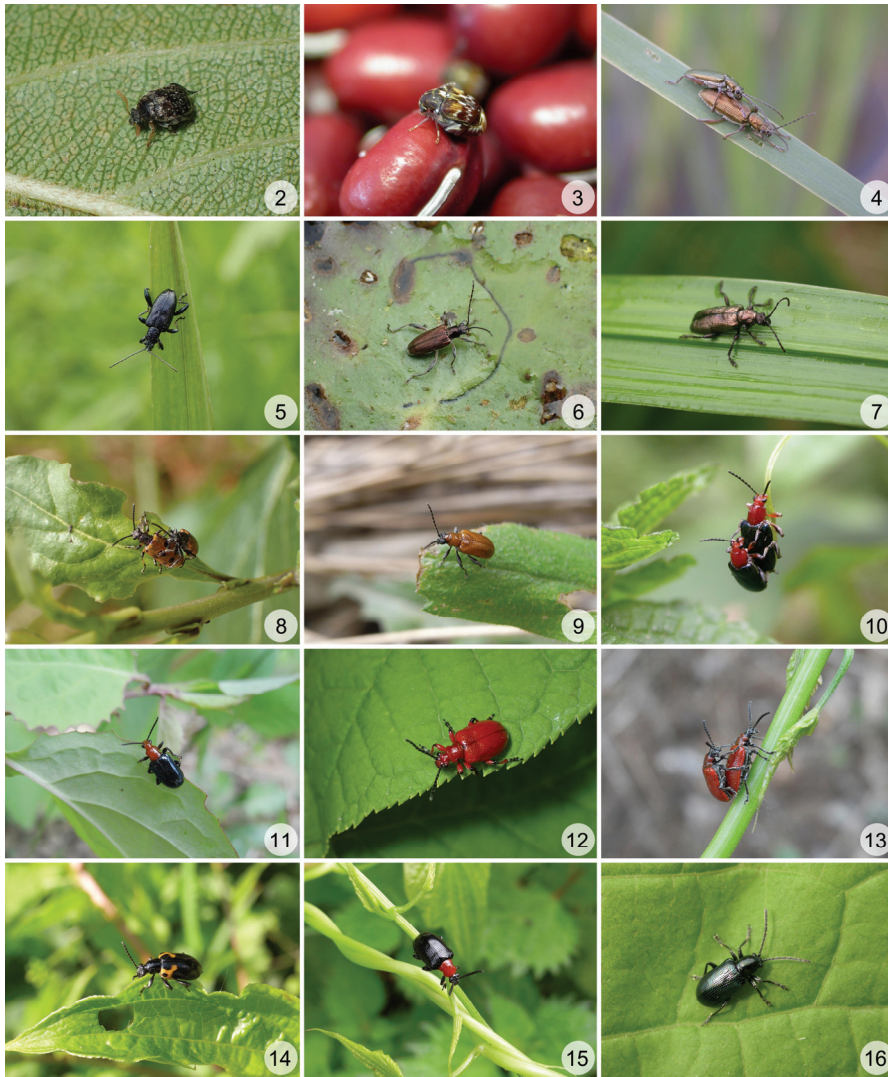
**Tribe Lemini Gyllenhal, 1813**

**Genus *Lema* Fabricius, 1798**

42. *Lema adamsii* Baly, 1865 – S Korea.  
43. *Lema concinnipennis* Baly, 1865 – N & S Korea.  
44. *Lema coreensis* Monrós, 1960 – S Korea.  
COMMENTS. Recorded from Gwangneung Forest under the homonymic name *L. coreana* Chûjô, 1933.  
45. *Lema coronata* Baly, 1873 – S Korea.  
46. *Lema cyanella* (Linnaeus, 1758) – N & S Korea.  
47. *Lema decempunctata* (Gebler, 1829) (Fig. 8) – N & S Korea.  
48. *Lema delicatula* Baly, 1873 – S Korea.  
49. *Lema dilecta* Baly, 1873 – S Korea.  
COMMENTS. Recorded from several regions in South Korea by An (2011).  
50. *Lema diversa* Baly, 1873 (Fig. 9) – N & S Korea.  
51. *Lema fortunei* Baly, 1859 (Fig. 10) – S Korea.  
52. *Lema honorata* Baly, 1873 (Fig. 11) – S Korea.  
53. *Lema scutellaris* (Kraatz, 1879) – N & S Korea.

**Genus *Oulema* Des Gozis, 1886**

54. *Oulema atosuturalis* (Pic, 1923) – S Korea.



Figs 2–16. Bruchinae (2, 3), Donaciinae (4–7) and Criocerinae (8–16). 2 – *Bruchus brachialis*; 3 – *Callosobruchus chinensis*; 4 – *Donacia bicoloricornis*; 5 – *D. flemola*; 6 – *D. provostii*; 7 – *Plateumaris sericea sibirica*; 8 – *Lema decempunctata*; 9 – *L. diversa*; 10 – *L. fortunei*; 11 – *L. honorata*; 12 – *Lilioceris merdigera*; 13 – *L. rugata*; 14 – *L. scapularis*; 15 – *L. sieversi*; 16 – *Oulema erichsonii*.

55. *Oulema dilutipes* (Fairmaire, 1888) – S Korea.  
 56. *Oulema erichsonii* (Suffrian, 1841) (Fig. 16) – S Korea.  
 57. *Oulema oryzae* (Kuwayama, 1931) – N & S Korea.  
 58. *Oulema tristis tristis* (Herbst, 1786) – N & S Korea.  
 59. *Oulema viridula* (Gressitt, 1942) – N & S Korea.

**Subfamily Cassidinae Gyllenhal, 1813**

**Tribe Aspidimorphini Chapuis, 1875**

**Genus *Aspidomorpha* Hope, 1840**

60. *Aspidomorpha difformis* (Motschulsky, 1861) (Fig. 17) – N & S Korea.  
 61. *Aspidomorpha transparipennis* (Motschulsky, 1861) – N & S Korea.

**Tribe Cassidini Gyllenhal, 1813**

**Genus *Cassida* Linnaeus, 1758**

62. *Cassida amurensis* (Kraatz, 1879) – N & S Korea.  
 63. *Cassida concha* Solsky, 1872 (Fig. 18) – N & S Korea.  
 COMMENTS. Including *C. juglans* Gressitt, 1942 as its synonym.  
 64. *Cassida ferruginea* Goeze, 1777 – S Korea.  
 65. *Cassida fuscorufa* Motschulsky, 1866 (Fig. 19) – N & S Korea.  
 66. *Cassida japana* Baly, 1874 (Fig. 20) – S Korea.  
 67. *Cassida koreana* Borowiec et Cho, 2011 (Fig. 21) – S Korea.  
 68. *Cassida lineola* Creutzer, 1799 – N & S Korea.  
 69. *Cassida mandli* Spaeth, 1921 – N & S Korea.  
 70. *Cassida mongolica* Boheman, 1854 – S Korea.  
 71. *Cassida nebulosa* Linnaeus, 1758 – N & S Korea.  
 72. *Cassida nobilis* Linnaeus, 1758 – N & S Korea.  
 73. *Cassida pallidicollis* Boheman, 1856 – N & S Korea.  
 74. *Cassida piperata* Hope, 1842 – N & S Korea.  
 75. *Cassida rubiginosa rubiginosa* Müller, 1776 (Fig. 22) – N & S Korea.  
 76. *Cassida sigillata* (Gorham, 1885) (Fig. 23) – N & S Korea.  
 77. *Cassida spaethi* Weise, 1900 – N Korea.  
 78. *Cassida velaris* Weise, 1896 – N & S Korea.  
 79. *Cassida versicolor* (Boheman, 1855) – N & S Korea.  
 80. *Cassida vespertina* Boheman, 1862 (Fig. 24) – S Korea.  
 COMMENTS. This species occurs only on Jeju Island.  
 81. *Cassida viridis* Linnaeus, 1758 – N & S Korea.  
 82. *Cassida vittata* Villers, 1789 – S Korea.

**Genus *Glyphocassis* Spaeth, 1914**

83. *Glyphocassis spilota spilota* (Gorham, 1885) – N & S Korea.

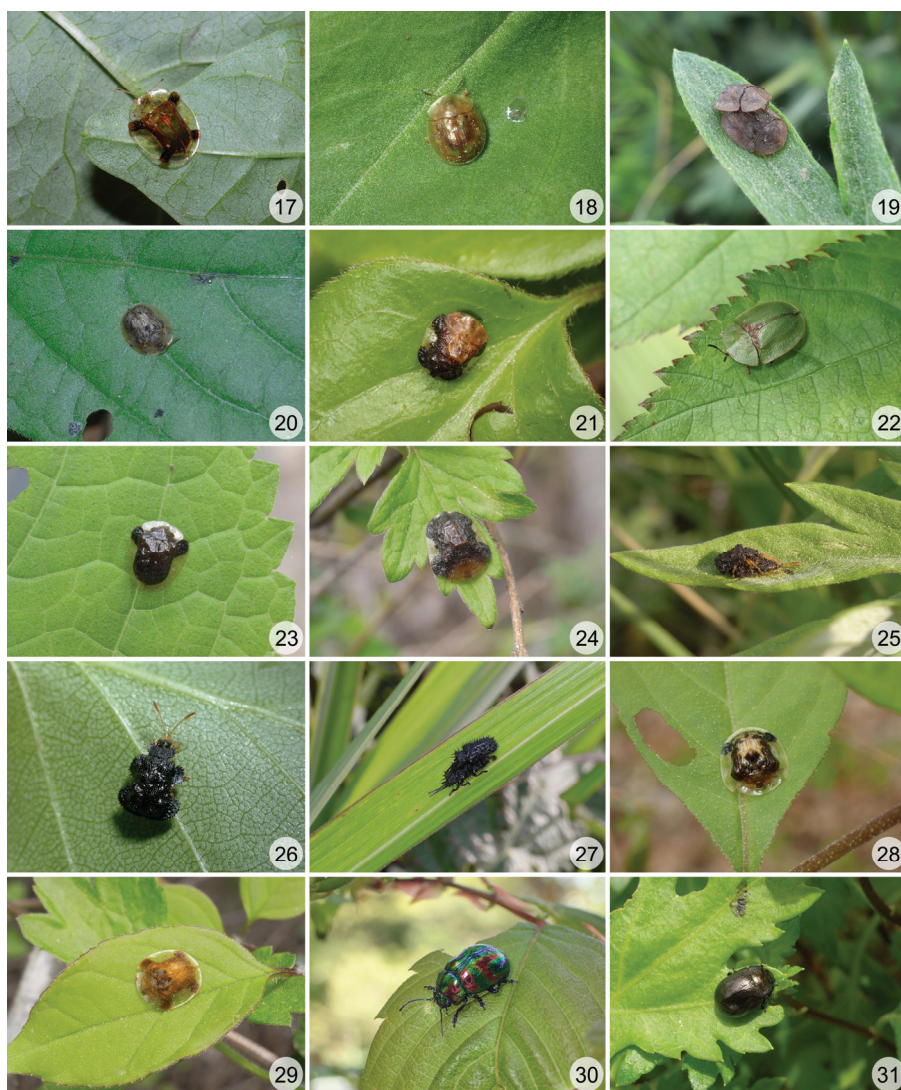
**Genus *Thlaspida* Weise, 1899**

84. *Thlaspida biramosa biramosa* (Boheman, 1855) (Fig. 28) – N & S Korea.  
 85. *Thlaspida lewisii* (Baly, 1874) (Fig. 29) – N & S Korea.

**Tribe Hispini Gyllenhal, 1813**

**Genus *Dactylispa* Weise, 1897**

86. *Dactylispa angulosa* (Solsky, 1872) (Fig. 25) – N & S Korea.  
 COMMENTS. Including its synonymic name *D. masonii* Gesto, 1923.  
 87. *Dactylispa excisa excisa* (Kraatz, 1879) (Fig. 26) – N & S Korea.



Figs 17–31. Cassidinae (17–29) and Chrysomelinae (30, 31). 17 – *Aspidomorpha difformis*; 18 – *Cassida concha*; 19 – *C. fuscorufa*; 20 – *C. japana*; 21 – *C. koreana*; 22 – *C. rubiginosa rubiginosa*; 23 – *C. sigillata*; 24 – *C. vespertina*; 25 – *Dactylispa angulosa*; 26 – *D. excisa excisa*; 27 – *Rhadinosa nigrocyanea*; 28 – *Thlaspida biramosa biramosa*; 29 – *T. lewisii*; 30 – *Ambrostoma koreana*; 31 – *Chrysolina aurichalcea*.



88. *Dactylispa koreana* An, Kwon et Lee, 1985 – S Korea.  
89. *Dactylispa subquadrata subquadrata* (Baly, 1874) – S Korea.

**Genus *Hispellinus* Weise, 1897**

90. *Hispellinus chinensis* Gressitt, 1950 – N & S Korea.  
91. *Hispellinus moerens* (Baly, 1874) – S Korea.

**Genus *Rhadinosa* Weise, 1905**

92. *Rhadinosa nigrocyanea* (Motschulsky, 1860) (Fig. 27) – N & S Korea.

**Subfamily Chrysomelinae Latreille, 1802**

**Tribe Chrysomelini Latreille, 1802**

**Genus *Chrysomela* Linnaeus, 1758**

93. *Chrysomela cuprea* Fabricius, 1775 – N & S Korea.  
94. *Chrysomela cyaneoviridis* Gruev, 1994 – N Korea.  
95. *Chrysomela lapponica* Linnaeus, 1758 – N Korea.  
96. *Chrysomela populi* Linnaeus, 1758 – N & S Korea.  
97. *Chrysomela salicivora* (Fairmaire, 1888) – S Korea.  
98. *Chrysomela tremula tremula* Fabricius, 1787 (Fig. 35) – N & S Korea.  
99. *Chrysomela vigintipunctata vigintipunctata* (Scopoli, 1763) (Fig. 36) – N & S Korea.

**Genus *Gastrolina* Baly, 1859**

100. *Gastrolina thoracica* Baly, 1864 (Fig. 38) – N & S Korea.  
COMMENTS. Previously misidentified as *G. depress* Baly, 1859.

**Genus *Gastrolinoides* Chûjô & Kimoto, 1960**

101. *Gastrolinoides japonica* (Harold, 1877) (Fig. 39) – N & S Korea.

**Genus *Gastrophysa* Chevrolat, 1836**

102. *Gastrophysa atrocyanea* Motschulsky, 1860 (Fig. 40) – N & S Korea.  
103. *Gastrophysa polygona elongata* Jolivet, 1951 – N & S Korea.  
COMMENTS. New to South Korea.

MATERIAL EXAMINED. **South Korea:** Gangwon Prov., Gangneung, Yeongok-myeon, Samsan-ri, 18–20.VIII 2001, 1 ex. (HCC), leg. J.I. Kim; Gangwon Prov., Sokcho, Seoraksan, Mt. Seoraksan, 18.V 2002, 1 ex. (HCC), leg. G.Y. Kwon.

**Genus *Phaedon* Latreille, 1829**

104. *Phaedon brassicae* Baly, 1874 (Fig. 47) – N & S Korea.

**Genus *Phratora* Chevrolat, 1836**

105. *Phratora koreana* Takizawa, 1985 (Fig. 48) – S Korea.  
106. *Phratora laticollis* (Suffrian, 1851) – N & S Korea.

COMMENTS. New to South Korea.

MATERIAL EXAMINED. **South Korea:** Gangwon Prov., Pyeongchang-gun, Jinbu-myeon, Mt. Odaesan, 37°47'34.0"N, 128°33'39.7"E, 15.V 2005, 15 ex. (HCC), leg. H.W. Cho; 13 ex. (HCC), same data as preceding one except for 31.V 2006.

107. *Phratora obtusicollis* Motschulsky, 1860 – N & S Korea.  
108. *Phratora polaris reitteri* (Lopatin, 1962) – N Korea.  
109. *Phratora ryanggangensis* Gruev, 1994 – N Korea.  
110. *Phratora vitellinae* (Linnaeus, 1758) (Fig. 49) – N & S Korea.

COMMENTS. New to South Korea.

MATERIAL EXAMINED. **South Korea:** Gangwon Prov., Pyeongchang-gun, Jinbu-myeon, Mt. Gyeongbansan, 10.V 2003, 9 ex. (HCC), leg. H.W. Cho; Gangwon Prov., Pyeongchang-gun, Daegwallyeong-myeon, Hoenggye-ri, 37°40'49.2"N, 128°44'58.1"E, 27.V 2018, 76 ex. (HCC), leg. H.W. Cho.

111.? *Phratora vulgatissima* (Linnaeus, 1758) – N Korea.

COMMENTS. Its occurrence in North Korea (Heyden, 1887; Doi, 1927; Chûjô, 1941d) is doubtful and should be confirmed with recent material.

**Genus *Plagiodes* Chevrolat, 1836**

112. *Plagiodes versicolora* (Laicharting, 1781) (Fig. 50) – N & S Korea.

10

**Genus *Plagiosterna* Motschulsky, 1860**

113. *Plagiosterna adamsii* (Baly, 1864) (Fig. 51) – N & S Korea.

114. *Plagiosterna aenea aenea* (Linnaeus, 1758) – N & S Korea.

**Tribe Doryphorini Motschulsky, 1860**

**Genus *Ambrostoma* Motschulsky, 1860**

115. *Ambrostoma koreana* Cho et Borowiec, 2013 (Fig. 30) – S Korea.

116. *Ambrostoma quadriimpressum quadriimpressum* (Motschulsky, 1845) – N Korea.

**Genus *Chrysolina* Motschulsky, 1860**

– *Chrysolina aeruginosa aeruginosa* (Faldermann, 1835)

COMMENTS. See note under *Chrysolina peninsularis*.

117. *Chrysolina aino* Takizawa, 1970 – Korea.

– *Chrysolina angusticollis* (Motschulsky, 1861)

COMMENTS. The record from Bukhansan Mountain by Mochizuki & Tsunekawa (1937) has never been confirmed. Indeed, Korea is not included in the range of *C. angusticollis* in Kimoto & Takizawa (1994), Bienkowski (2001, 2007), or Löbl & Smetana (2010).

118. *Chrysolina aurichalcea* (Mannerheim, 1825) (Fig. 31) – N & S Korea.

119. *Chrysolina difficilis yezoensis* (Matsumura, 1911) – S Korea.

COMMENTS. The occurrence of this species was confirmed by recent materials.

MATERIAL EXAMINED. **South Korea:** Gangwon Prov., Pyeongchang-gun, Jinbu-myeon, Mt. Odaesan, 37°47'20"N, 128°33'58"E, 8.VIII 2013, 2 ex. (HCC), leg. M.J. Lee.

120. *Chrysolina exanthematica exanthematica* (Wiedemann, 1821) (Fig. 32) – N & S Korea.

121. *Chrysolina gansenensis* (Weise, 1900) – N & S Korea.

122.\* *Chrysolina graminis auraria* (Motschulsky, 1860) – S Korea.

COMMENTS. New to Korea.

MATERIAL EXAMINED. **South Korea:** Gyeonggi Prov., Paju, Jangdan-myeon, Geogok-ri, 29.VI 1987, 1 ex. (HCC), leg. J.I. Kim; Gyeonggi Prov., Yeoncheon-gun, Jangnam-myeon, Gorangpo-ri, 27.VI 1987, 1 ex. (HCC), leg. J.I. Kim; Gyeonggi Prov., Yeoncheon-gun, Jangnam-myeon, Panbu-ri, 27.VI 1987, 1 ex. (HCC), leg. J.I. Kim; Gyeonggi Prov., Yeoncheon-gun, Jung-myeon, Samgot-ri, 19.VI 2015, 153 ex. (SAC), leg. S.L. An; Gyeonggi Prov., Yeoncheon-gun, Gunnam-myeon, Seongok-ri, 12.VI 2008, 3 ex. (HCC), leg. T.M. Han; Gyeonggi Prov., Yeoncheon-gun, Misan-myeon, Samhwa-ri, 3.VII 2005, 1 ex. (HCC), leg. I.S. Ryu.

123. *Chrysolina interlucea* Medvedev, 1970 – N Korea.

124. *Chrysolina koreana* Chûjô, 1941 – N & S Korea.

125. *Chrysolina nikolskyi sutschanica* Medvedev, 1970 (Fig. 33) – S Korea.

– *Chrysolina nikinoja* Bechyné, 1950

COMMENTS. The specific status of *C. nikinoja* Bechyné, 1950 is still uncertain (see Bieńkowski, 2001; Löbl & Smetana, 2010). Here, we treat it as a synonym of *C. difficilis yezoensis*.

126. *Chrysolina peninsularis* Bechyné, 1952 – S Korea.

COMMENTS. The name *C. aeruginosa peninsularis* was removed from synonymy with *C. aurichalcea* and raised to the species level. *Chrysolina peninsularis* is not listed for Korea in Löbl & Smetana (2010), but the type locality of the species is Seoul, South Korea. The record of *C. aeruginosa aeruginosa* (Faldermann, 1835) from Korea by Löbl & Smetana (2010) is probably an error.

– *Chrysolina polita adamsi* (Baly, 1879)

COMMENTS. Records from Korea without specimen data (Cho, 1965; Jolivet, 1973; Lee & An, 2001; An, 2011) are probably errors.

127. *Chrysolina staphylaea daurica* (Gebler, 1832) – S Korea.

COMMENTS. This species occurs only on Jeju Island.

128. *Chrysolina sulcicollis solida* (Weise, 1898) – N & S Korea.

129. *Chrysolina virgata* (Motschulsky, 1860) (Fig. 34) – N & S Korea.

#### Genus *Parambrostoma* Chen, 1936

– *Parambrostoma ambiauum* (Chen, 1936)

COMMENTS. The Korean record is probably based on a mislabeled specimen (see Chen, 1936). This species is endemic to Nepal (Kimoto & Takizawa, 1981; Kimoto, 2005).

– *Parambrostoma sublaevis* (Chen, 1934)

COMMENTS. The Korean record is probably based on mislabeled specimens (see Chen, 1934, 1936). This species is endemic to Nepal (Takizawa, 1988; Kimoto, 2005).

#### Tribe Entomoscelini Reitter, 1913

##### Genus *Entomoscelis* Chevrolat, 1836

130. *Entomoscelis orientalis* Motschulsky, 1860 (Fig. 37) – N & S Korea.

##### Genus *Potania* Weise, 1889

131. *Potania cyrtionoides* (Jacoby, 1885) (Fig. 52) – S Korea.

#### Tribe Goniocetini Motschulsky, 1860

##### Genus *Gonioctena* Chevrolat, 1836

132. *Gonioctena aeneipennis* Baly, 1862 (Fig. 41) – S Korea.

133. *Gonioctena coreana* (Bechyné, 1948) (Fig. 42) – N & S Korea.

134. *Gonioctena fulva* (Motschulsky, 1861) – N & S Korea.

135. *Gonioctena gracilicornis* (Kraatz, 1879) – N & S Korea.

136. *Gonioctena jacobsoni* (Ogloblin et Medvedev, 1956) – S Korea.

137. *Gonioctena kamiyai* Kimoto, 1963 (Fig. 43) – S Korea.

138. *Gonioctena koryeoensis* Cho et Lee, 2010 (Fig. 44) – S Korea.

139. *Gonioctena laeta* Medvedev, 1973 – N & S Korea.

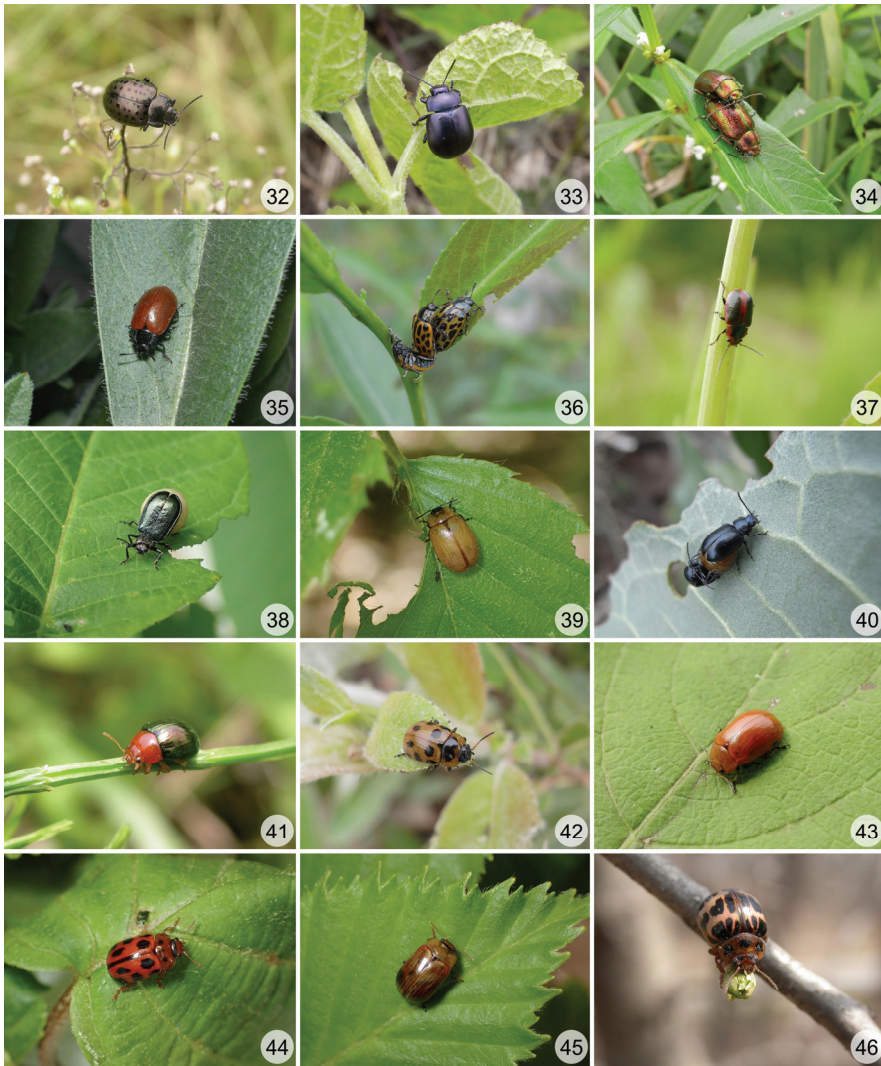
140. *Gonioctena ogloblini* Medvedev et Dubeshko, 1972 (Fig. 45) – N & S Korea.

COMMENTS. Recorded under the synonymic name *G. suwai* Takizawa, 1985.

141. *Gonioctena sibirica* (Weise, 1893) – N & S Korea.

142. *Gonioctena viminalis* (Linnaeus, 1758) – N & S Korea.





Figs 32–46. Chrysomelinae. 32 – *Chrysolina exanthematica exanthematica*; 33 – *C. nikolskyi sutschanica*; 34 – *C. virgata*; 35 – *Chrysomela tremula tremula*; 36 – *C. vigintipunctata vigintipunctata*; 37 – *Entomoscelis orientalis*; 38 – *Gastrolina thoracica*; 39 – *Gastrolinoides japonica*; 40 – *Gastrophysa atrocyanea*; 41 – *Gonioctena aeneipenni*; 42 – *G. coreana*; 43 – *G. kamiyai*; 44 – *G. koryeoensis*; 45 – *G. ogloblini*; 46 – *Paropsides soriculata*.

**Genus *Paropsides* Motschulsky, 1860**

– ***Paropsides nigrofasciata* Jacoby, 1888**

COMMENTS. No specimen has been found since Chen (1934) reported this species from Korea without specimen data. This species is probably not distributed in Korea.

143. ***Paropsides soriculata* (Swartz, 1808)** (Fig. 46) – N & S Korea.

COMMENTS. Including its synonymic name *P. duodecimpustulata* (Gebler, 1825).

**Subfamily Galerucinae Latreille, 1802**

**Tribe Alticini Newman, 1835**

**Genus *Altica* Geoffroy, 1762**

144. ***Altica ampelophaga koreana* (Ogloblin, 1925)** – N & S Korea.

145. ***Altica caerulea* (Olivier, 1791)** – N Korea.

COMMENTS. Including its synonymic name *A. brevicosta* (Weise, 1922).

146. ***Altica caerulescens* (Baly, 1874)** – N & S Korea.

147. ***Altica cirsicola* Ohno, 1960** – N & S Korea.

– ***Altica cyanea* Weber, 1801**

COMMENTS. This species is endemic to Sundaland (Reid & Beatson, 2015). The Korean record by Löbl & Smetana (2010) is an error.

– ***Altica deserticola* (Weise, 1889)**

COMMENTS. Added by Takizawa (1985), but deleted from the Korean fauna by Gruev & Döberl (2005).

– ***Altica elaeagnusae* Zhang, Wang et Yang, 2006**

COMMENTS. *Altica elaeagnusae* is distributed only in Xinjiang, China. The only record from Korea by Lee & Lee (2014) is probably based on the misidentification of *A. oleracea*.

148. ***Altica fragariae* (Nakane, 1955)** – N & S Korea.

149. ***Altica japonica* Ohno, 1960** – N & S Korea.

150. ***Altica latericosta subcostata* Ohno, 1960** (Fig. 55) – N & S Korea.

151. ***Altica oleracea oleracea* (Linnaeus, 1758)** (Fig. 56) – N & S Korea.

152. ***Altica viridicyanea* (Baly, 1874)** – N & S Korea.

153. ***Altica weisei* (Jacobson, 1892)** – N Korea.

**Genus *Aphthona* Chevrolat, 1836**

154. ***Aphthona abdominalis* (Duftschmid, 1825)** – N & S Korea.

COMMENTS. Including its synonymic name *A. licentana* Chen, 1939.

155. ***Aphthona chinchihhi* Chen, 1939** – N Korea.

COMMENTS. Including the synonymic name *A. famula* Warchałowski, 1969.

156. ***Aphthona chinensis* Baly, 1877** – N Korea.

157. ***Aphthona coreana* Heikertinger, 1944** – N Korea.

158. ***Aphthona erythropoda* Chen, 1939** – S Korea.

159. ***Aphthona modesta* Weise, 1887** – N & S Korea.

160. ***Aphthona perminuta* Baly, 1875** – S Korea.

161. ***Aphthona strigosa* Baly, 1874** – S Korea.

162. ***Aphthona trivialis* Weise, 1887** – N & S Korea.

COMMENTS. With its synonymic name *A. merkli* Gruev, 1994.

163. ***Aphthona varipes* Jacoby, 1890** – N Korea.

**Genus *Argopistes* Motschulsky, 1860**

164. ***Argopistes biplagiatus* Motschulsky, 1860** – S Korea.

165.? *Argopistes coccinelliformis* Csiki, 1940 – Korea.

COMMENTS. Recorded from Korea several times, but treated as suspect by Kimoto (1965), Kimoto & Takizawa (1994), and Lee & An (2001). Its occurrence in Korea needs confirmation with recent material.

166. *Argopistes tsekooni* Chen, 1934 – N & S Korea.

167.? *Argopistes unicolor* Jacoby, 1885 – N Korea.

COMMENTS. Recorded from North Korea by Winkler (1930) and Gruev (1978), but treated as suspect by Lee & An (2001). The occurrence of *A. unicolor* in Korea should be confirmed.

**Genus *Argopus* Fischer von Waldheim, 1824**

168. *Argopus balyi* Harold, 1878 – S Korea.

169. *Argopus koreanus* Chûjô, 1941 – N & S Korea.

170. *Argopus nigripes* Weise, 1889 – S Korea.

171. *Argopus nigratarsis* (Gebler, 1823) – N & S Korea.

172. *Argopus punctipennis substriatus* Weise, 1887 – N & S Korea.

COMMENTS. Including its synonymic name *A. riedeli* Warchałowski, 1969.

173. *Argopus unicolor* Motschulsky, 1860 – N & S Korea.

**Genus *Asiophrida* Medvedev, 2000**

174. *Asiophrida spectabilis* (Baly, 1862) (Fig. 58) – N & S Korea.

COMMENTS. Transferred from the genus *Ophrida* Chapuis, 1875 to the genus *Asiophrida* Medvedev, 2000.

**Genus *Batophila* Foudras, 1860**

175. *Batophila acutangula* Heikertinger, 1921 – N & S Korea.

**Genus *Bikasha* Maulik, 1931**

176. *Bikasha collaris* (Baly, 1877) – S Korea.

COMMENTS. Recorded from Korea by Kwon *et al.* (1996).

**Genus *Chaetocnema* Stephens, 1831**

177. *Chaetocnema bicolorata* Kimoto, 1971 – S Korea.

178. *Chaetocnema breviscula* (Faldermann, 1837) – N Korea.

COMMENTS. Including its synonymic name *C. tibialis* (Illiger, 1807).

179. *Chaetocnema concinna* (Marsham, 1802) (Fig. 61) – N & S Korea.

180. *Chaetocnema concinnicollis* (Baly, 1874) – N & S Korea.

181. *Chaetocnema costulata* (Motschulsky, 1860) – N & S Korea.

182. *Chaetocnema cylindrica* (Baly, 1874) – S Korea.

– *Chaetocnema discreta* (Baly, 1876)

COMMENTS. The specific status of *C. discreta* (Baly, 1876) is still uncertain. It was synonymized under *C. puncticollis* by Medvedev (2006), but considered to be a valid species by Konstantinov *et al.* (2011). Here, we regard it as a synonym of *C. puncticollis* (Konstantinov, 2019, personal communication).

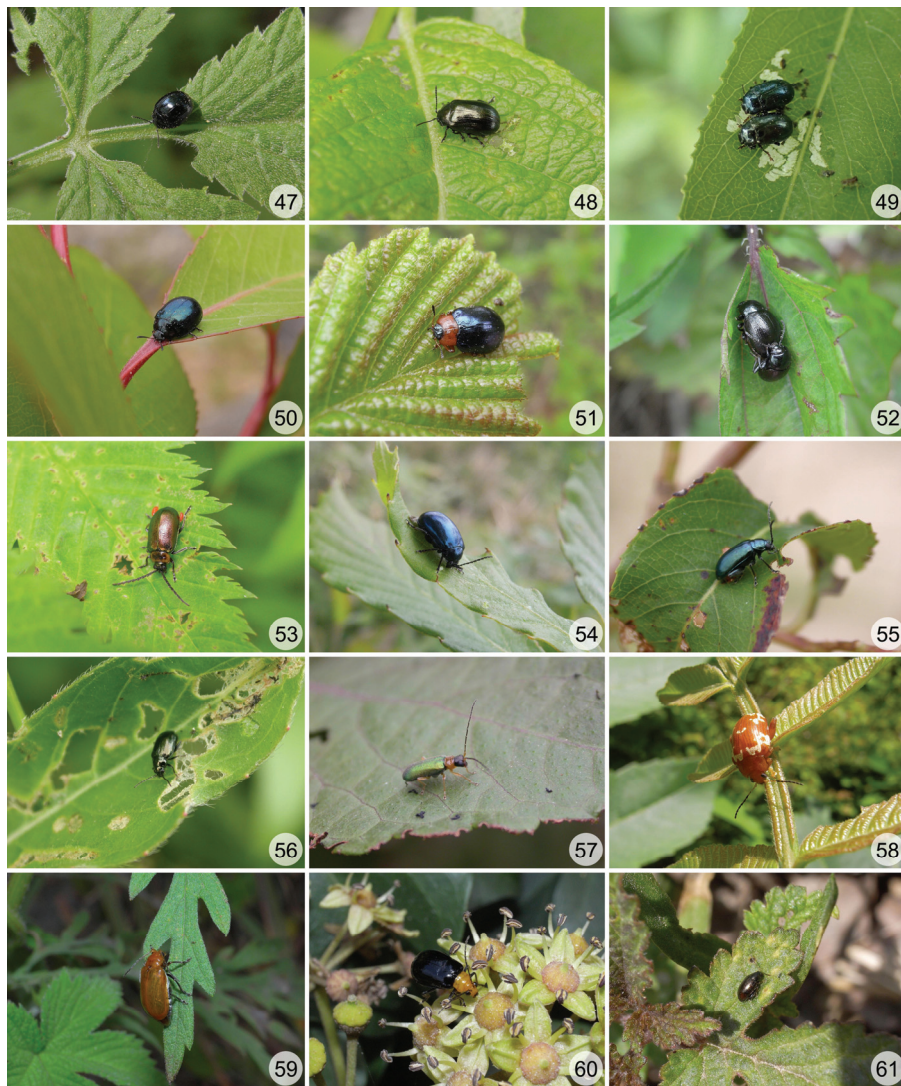
183. *Chaetocnema granulosa* (Baly, 1874) – S Korea.

COMMENTS. Recorded only from Jeju Island.

184. *Chaetocnema ingenua* (Baly, 1876) – N & S Korea.

185. *Chaetocnema kimotoi* Gruev, 1980 – N Korea.

186. *Chaetocnema koreana* Chûjô, 1942 – N & S Korea.



Figs 47–61. Chrysomelinae (47–52) and Galerucinae (53–61). 47 – *Phaedon brassicae*; 48 – *Phratora koreana*; 49 – *P. vitellinae*; 50 – *Plagioderia versicolora*; 51 – *Plagiosterna adamsii*; 52 – *Potania cyrtonoides*; 53 – *Agelasa nigriceps*; 54 – *Agelastica coerulea*; 55 – *Altica latericosta subcostata*; 56 – *A. oleracea oleracea*; 57 – *Apophyllia beeneni*; 58 – *Asiophrida spectabilis*; 59 – *Aulacophora indica*; 60 – *A. nigripennis nigripennis*; 61 – *Chaetocnema concinna*.

187. *Chaetocnema picipes* Stephens, 1831 – N Korea.  
188. *Chaetocnema puncticollis puncticollis* (Motschulsky, 1858) – N & S Korea.  
– *Chaetocnema tibialis* (Illiger, 1807)  
COMMENTS. This species is not distributed in the Far East (Konstantinov *et al.*, 2011).  
The Korean record by Löbl & Smetana (2010) is in error.

**Genus *Crepidodera* Chevrolat, 1836**

- 189.? *Crepidodera aurata* (Marsham, 1802) – Korea.  
COMMENTS. The records from Korea by Bukejs (2009) and Löbl & Smetana (2010) without specimen data are doubtful.  
190. *Crepidodera nigricoxis* Allard, 1878 – N Korea.  
191.? *Crepidodera obscuripes* (Heikertinger, 1912) – Korea.  
COMMENTS. Added by Konstantinov (1996) without specimen data. Its occurrence in Korea should be confirmed with recent material.  
192. *Crepidodera picipes* (Weise, 1887) – N & S Korea.  
COMMENTS. Recorded under the synonymic name *C. mroczkowskii* Warchałowski, 1969.  
193. *Crepidodera plutus* (Latreille, 1804) – N & S Korea.

**Genus *Crepidoderoides* Chûjô, 1942**

194. *Crepidoderoides choi* Chûjô, 1942 – N Korea.

**Genus *Halticorcus* Lea, 1917**

195. *Halticorcus duodecimmaculata* (Chen, 1934) – Korea.  
196. *Halticorcus ornatipennis* (Chen, 1933) – S Korea.  
COMMENTS. Recorded from Yeongyang County by Lee & Lee (2014).

**Genus *Hemipyxis* Chevrolat, 1836**

- 197.? *Hemipyxis amurensis* (Weise, 1887) – Korea.  
COMMENTS. Recorded from Korea by Döberl (2007) and Löbl & Smetana (2010) without specimen data. Its occurrence in Korea should be confirmed.  
198. *Hemipyxis flavipennis* (Baly, 1874) – S Korea.  
– *Hemipyxis flavipes* Kimoto, 1978  
COMMENTS. Recorded from Korea by Takizawa (1985), but this record is not credible. This species is endemic to Taiwan.  
199. *Hemipyxis plagioderoides* (Motschulsky, 1861) (Fig. 68) – N & S Korea.  
– *Hemipyxis privigna* Gressitt et Kimoto, 1963  
COMMENTS. The only record from Andong by Lee & Lee (2014) is obviously due to misidentification of other species of *Hemipyxis*.

**Genus *Hermaphysa* Foudras, 1860**

200. *Hermaphysa adamsii* Baly, 1874 – N Korea.  
201. *Hermaphysa korotyaevi* Konstantinov, 2009 – S Korea.

**Genus *Hyphasis* Harold, 1877**

202. *Hyphasis parvula* Jacoby, 1884 – S Korea.  
COMMENTS. Recorded from Hadong County by Kang *et al.* (2013).

**Genus *Lipromima* Heikertinger, 1924**

203. *Lipromima minuta* (Jacoby, 1885) – S Korea.

**Genus *Liprus* Motschulsky, 1861**

204. *Liprus punctatostriatus* Motschulsky, 1861 – N Korea.

COMMENTS. Recorded from North Korea by Chûjô (1942) under the synonymic name *Crepidomorpha rufotestaceus* (Motschulsky, 1866).

**Genus *Longitarsus* Latreille, 1829**

- 205. *Longitarsus aphthonoides* Weise, 1887 – N Korea.
- 206. *Longitarsus brunneus* (Duftschmit, 1825) – N Korea.
- 207. *Longitarsus cervinus* (Baly, 1875) – N & S Korea.
- 208. *Longitarsus dorsopictus* Chen, 1939 – N Korea.
- 209.? *Longitarsus fusus* Chen, 1939 – S Korea.

COMMENTS. This species is distributed in Gansu, Ningxia, and Shanxi Provinces, China. The records from South Korea by Kwon *et al.* (1996), Lee & An (2001), and An (2011) are doubtful.

- 210. *Longitarsus godmani* (Baly, 1876) – N & S Korea.
- 211. *Longitarsus holsaticus* (Linnaeus, 1758) – N Korea.
- 212. *Longitarsus kutscherai* (Rye, 1872) – N & S Korea.
- 213. *Longitarsus lewisii* (Baly, 1874) – N & S Korea.
- 214. *Longitarsus longiseta* Weise, 1889 – N Korea.
- 215. *Longitarsus nasturtii* (Fabricius, 1792) – N & S Korea.
- 216. *Longitarsus nitidus* Jacoby, 1885 – N Korea.
- 217. *Longitarsus piceorufus* Chen, 1939 – N Korea.
- 218. *Longitarsus scutellaris* (Mulsant et Rey, 1874) – N & S Korea.

– *Longitarsus stragulatoides* Gruev, 1990

COMMENTS. Misquoted by Kwon *et al.* (1996). This species is endemic to Nepal.

- 219. *Longitarsus succineus* (Foudras, 1860) – N & S Korea.
- 220. *Longitarsus suturellus* (Duftschmid, 1825) – N Korea.
- 221. *Longitarsus waltherhorni* Csiki, 1939 – S Korea.

**Genus *Luperomorpha* Weise, 1887**

- 222. *Luperomorpha funesta* (Baly, 1874) – S Korea.
- 223. *Luperomorpha josifovi* Gruev, 1994 – N Korea.
- 224. *Luperomorpha pryeri* (Baly, 1874) – N & S Korea.
- 225. *Luperomorpha xanthodera* (Fairmaire, 1888) – N & S Korea.

**Genus *Lythraria* Bedel, 1897**

- 226. *Lythraria salicariae* (Paykull, 1800) – N Korea.

**Genus *Mandarella* Duvivier, 1892**

- 227. *Mandarella moorii* (Baly, 1874) – S Korea.

COMMENTS. Transferred from the genus *Stenoluperus* Ogloblin, 1936 to the genus *Mandarella* Duvivier, 1892 by Medvedev (2012).

- 228. *Mandarella nipponensis* (Laboissière, 1913) – N & S Korea.

COMMENTS. Transferred from the genus *Stenoluperus* Ogloblin, 1936 to the genus *Mandarella* Duvivier, 1892 by Medvedev (2012).

**Genus *Manobia* Jacoby, 1885**

- 229. *Manobia parvula* (Baly, 1874) – N & S Korea.

**Genus *Mantura* Stephens, 1831**

- 230. *Mantura clavareauii* Heikertinger, 1912 (Fig. 70) – S Korea.
- 231. *Mantura rustica* (Linnaeus, 1767) – S Korea.



**Genus *Neocrepidodera* Heikertinger, 1911**

232. *Neocrepidodera interpunctata* (Motschulsky, 1859) – N & S Korea.  
233. *Neocrepidodera obscuritarsis* (Motschulsky, 1859) – N & S Korea.  
234. *Neocrepidodera ohkawai* Takizawa, 2002 – S Korea.  
COMMENTS. Recorded from Andong by Lee & Lee (2014).  
235. *Neocrepidodera resina* (Gressitt et Kimoto, 1963) – S Korea.  
236. *Neocrepidodera sibirica* (Pic, 1909) – N & S Korea.

**Genus *Nonarthra* Baly, 1862**

237. *Nonarthra coreana* Chûjô, 1935 – N & S Korea.  
238. *Nonarthra cyanea cyanea* Baly, 1874 (Fig. 72) – N & S Korea.

**Genus *Pentamesa* Harold, 1876**

239. *Pentamesa sophiae* An, 1988 (Fig. 76) – S Korea.

**Genus *Philopona* Weise, 1903**

240. *Philopona vibex* (Erichson, 1834) – N & S Korea.

**Genus *Phygasia* Chevrolat, 1836**

241. *Phygasia fulvipennis* (Baly, 1874) (Fig. 77) – N & S Korea.

**Genus *Phyllotreta* Chevrolat, 1836**

242. *Phyllotreta austriaca aligera* Heikertinger, 1911 – N Korea.  
243. *Phyllotreta hamata* Park, 2013 – S Korea.  
244. *Phyllotreta humilis* Weise, 1887 – N & S Korea.  
245. *Phyllotreta koltzei* Weise, 1887 – N Korea.  
246. *Phyllotreta nemorum* (Linnaeus, 1758) – S Korea.  
18  
247. *Phyllotreta rectilineata* Chen, 1939 – N & S Korea.  
248. *Phyllotreta striolata* (Illiger, 1803) – N & S Korea.  
249. *Phyllotreta vittula* (Redtenbacher, 1849) – N Korea.

**Genus *Podontia* Dalman, 1824**

- 250.? *Podontia lutea* (Olivier, 1790) – Korea.

COMMENTS. Its record from Korea is treated as suspect by An (2011) because no specimen has been found in Korea.

**Genus *Pseudoliprus* Chûjô & Kimoto, 1960**

- 251.? *Pseudoliprus hirtus* (Baly, 1874) – N Korea.

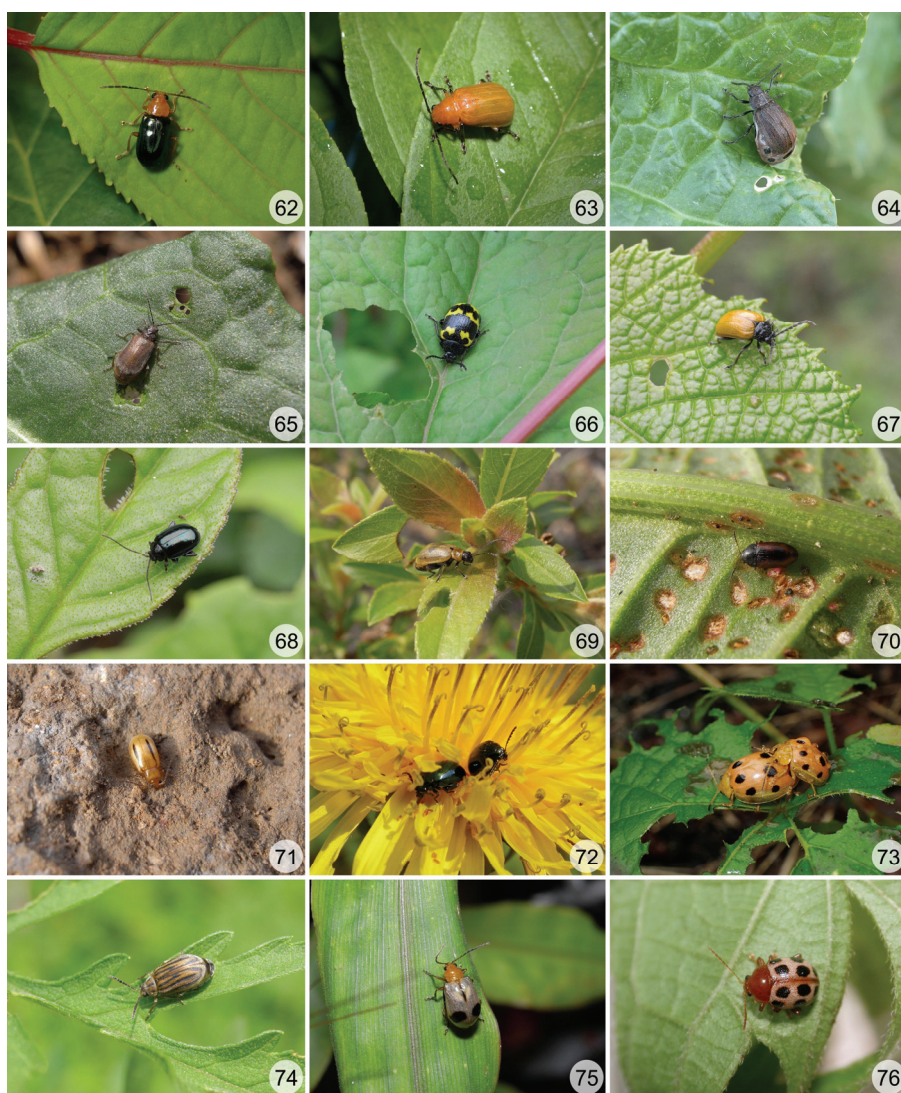
COMMENTS. The only record from Samjiyon County by Kim (1993) is doubtful.

252. *Pseudoliprus suturalis suturalis* (Jacoby, 1885) – S Korea.

**Genus *Psylliodes* Latreille, 1829**

253. *Psylliodes attenuata* (Koch, 1803) – N & S Korea.  
254. *Psylliodes brettinghami* Baly, 1862 – N Korea.  
255. *Psylliodes cucullata cucullata* (Illiger, 1807) – N Korea.  
256. *Psylliodes plana* Maulik, 1926 – N Korea.  
257. *Psylliodes punctifrons* Baly, 1874 – S Korea.  
258. *Psylliodes takizawai* Gruev, 1990 – N Korea.  
259. *Psylliodes viridana* Motschulsky, 1858 – N & S Korea.

COMMENTS. *Psylliodes angusticollis* Baly, 1874 was synonymized with *P. viridana* Motschulsky, 1858 by Nadein & Lee (2012).



Figs 62–76. Galerucinae. 62 – *Cneorane elegans*; 63 – *Doryxenoides tibialis*; 64 – *Galeruca dahlia vicina*; 65 – *Galerucella grisescens*; 66 – *Gallerucida bifasciata*; 67 – *G. flavipennis*; 68 – *Hemipyxis plagioderoides*; 69 – *Lochmaea caprea*; 70 – *Mantura clava-reauii*; 71 – *Medythia nigrobilineata*; 72 – *Nonarthra cyanea cyanea*; 73 – *Oides decempunctatus*; 74 – *Ophraella communa*; 75 – *Paridea angulicollis*; 76 – *Pentamesa sophiae*.



**Genus *Sangariola* Jacobson, 1922**

260. *Sangariola fortunei* (Baly, 1888) – S Korea.  
261. *Sangariola punctatostrigata* (Motschulsky, 1861) – S Korea.

**Genus *Sphaeroderma* Stephens, 1831**

262. *Sphaeroderma apicale* Baly, 1874 – N & S Korea.  
263. *Sphaeroderma balyi balyi* Jacoby, 1885 – N Korea.  
264. *Sphaeroderma fraternale* Chen, 1939 – N Korea.  
265. *Sphaeroderma leei* Takizawa, 1980 – N & S Korea.  
266.? *Sphaeroderma nigricolle* Jacoby, 1885 – N Korea.  
COMMENTS. The only record from Paegam and Samjiyon Counties by Kim (1993) is doubtful and should be confirmed with recent material.  
267. *Sphaeroderma separatum* Baly, 1874 – S Korea.  
268. *Sphaeroderma seriatum* Baly, 1874 – S Korea.  
COMMENTS. Recorded from Goesan County by Park *et al.* (2014).

**Genus *Xuthea* Baly, 1865**

- 269.? *Xuthea orientalis* Baly, 1865 – Korea.  
COMMENTS. No other specimens have been found since it was recorded from Korea by Heikertinger (1924).

**Tribe Galerucini Latreille, 1802**

**Genus *Apophyllia* Thomson, 1858**

270. *Apophyllia beeneni* Bezděk, 2003 (Fig. 57) – N & S Korea.  
COMMENTS. Previously misidentified as *A. flavovirens* (Fairmaire, 1878).  
271. *Apophyllia eoa* Ogloblin, 1936 – N Korea.  
272. *Apophyllia grandicornis* (Fairmaire, 1888) – S Korea.  
COMMENTS. Including its synonymic name *A. shirozui* Takizawa, 1985.  
273. *Apophyllia thalassina* (Faldermann, 1835) – S Korea.

**Genus *Doryxenoides* Laboissière, 1927**

- *Doryxenoides hainanus* Gressitt et Kimoto, 1963  
COMMENTS. The first record from Korea by Takizawa (1985) is probably based on misidentification of *D. tibialis*, which was recorded by Kwon *et al.* (1996). *Doryxenoides hainanus* occurs only on Hainan Island, China.  
274. *Doryxenoides tibialis* Laboissière, 1927 (Fig. 63) – N & S Korea.  
COMMENTS. See note under *D. hainanus*.  
MATERIAL EXAMINED. **South Korea:** Seoul, Dongdaemun-gu, Cheongnyangni, 8.X 1981, 1 ex. (SAC), leg. K.J. Won; 1 ex. (HCC), same data as preceding one except for 7.IX 1987; Seoul, Jongno-gu, Changgyeonggung Palace, 28.IX 1980, 1 ex. (SAC), leg. S.L. An; 1 ex. (SAC), same data as preceding one except for 30.X 1983; 1 ex. (SAC), same data as preceding one except for 22.X 1988; Gyeonggi Prov., Goyang, Deogyang-gu, Wondang, 20.IX 1988, 1 ex. (SAC), leg. H.S. Baek; Gyeonggi Prov., Gwangju, Jungbu-myeon, 1.X 1980, 1 ex. (SAC), leg. S.L. An; Gyeonggi Prov., Namyangju, Mt. Cheonmasan, 3.X 1980, 3 ex. (SAC), leg. S.L. An; Gyeonggi Prov., Namyangju, Mt. Cheonmasan, 13.IX 1981, 1 ex. (SAC), leg. O.G. Jung; Gyeonggi Prov., Yongin, Giheung-gu, 11.X 1981, 1 ex. (SAC), leg. K.W. Kim; Chungnam Prov., Yeongi-gun, Jochiwon, 26.IX 1982, 1 ex. (SAC), leg. S.L. An; Gyeongbuk Prov., Andong, Songcheon-dong, 36°32'37.1"N, 128°47'56.9"E, 13.IX 2003, 1 ex. (HCC), leg. H.W. Cho; 1 ex. (HCC), same data as preceding one except for 17.IX 2003; Gyeongbuk Prov., Andong, Yongsang-dong, 36°33'26.1"N, 128°45'30.3"E, 25.VIII 2016, 1 ex. (HCC), leg. H.W. Cho.

**Genus *Galeruca* Geoffroy, 1762**

275. *Galeruca dahlii vicina* Solsky, 1872 (Fig. 64) – N & S Korea.  
276. *Galeruca daurica* (Joannis, 1865) – S Korea.  
277. *Galeruca extensa* (Motschulsky, 1862) – S Korea.  
278. *Galeruca heydeni* Weise, 1887 – N & S Korea.  
279. *Galeruca reichardti* Jacobson, 1925 – N & S Korea.  
280. *Galeruca tanacetii incisicollis* (Motschulsky, 1860) – N & S Korea.  
281. *Galeruca weisei* Reitter, 1903 – N Korea.

**Genus *Galerucella* Crotch, 1873**

282. *Galerucella grisescens* (Joannis, 1865) (Fig. 65) – N & S Korea.  
283. *Galerucella lineola lineola* (Fabricius, 1781) – N & S Korea.  
284. *Galerucella nipponensis* (Laboissière, 1922) – S Korea.

**Genus *Lochmaea* Weise, 1883**

285. *Lochmaea caprea* (Linnaeus, 1758) (Fig. 69) – N & S Korea.

**Genus *Ophraella* Wilcox, 1965**

286. *Ophraella communis* LeSage, 1986 (Fig. 74) – N & S Korea.

COMMENTS. Introduced species.

MATERIAL EXAMINED. **South Korea:** Busan, Busan Port, collected from imported U.S. hay, 12.X 2001, 1 ex. (HCC).

**Genus *Pyrrhalta* Joannis, 1865**

287. *Pyrrhalta annulicornis* (Baly, 1874) – N & S Korea.  
288. *Pyrrhalta fuscipennis* (Jacoby, 1885) – N & S Korea.  
289. *Pyrrhalta humeralis* (Chen, 1942) – S Korea.  
290.\* *Pyrrhalta tibialis* (Baly, 1874) – S Korea.

COMMENTS. New to Korea.

MATERIAL EXAMINED. **South Korea:** Chungnam Prov., Cheonan, Mt. Gwangdeoksan, 10.VII 1982, 1 ex. (SAC), leg. S.M. Lee; Chungnam Prov., Gongju, Iin-myeon, Mt. Baegunsan, 5.VI 1999, 1 ex. (SAC), leg. S.L. An; Jeju Prov., Mt. Hallasan, 21.VIII 1993, 1 ex. (SAC), leg. S.L. An.

**Genus *Tricholochmaea* Laboissière, 1932**

- 291.\* *Tricholochmaea semifulva* (Jacoby, 1885) (Fig. 78) – S Korea.

COMMENTS. New to Korea.

MATERIAL EXAMINED. **South Korea:** Gyeonggi Prov., Namyangju, Kwangnung, 24.IV 1989, 1 ex. (SAC), leg. S.L. An; Gyeonggi Prov., Namyangju, Mt. Cheonmasan, 4.V 1979, 2 ex. (SAC), leg. S.M. Lee; Gyeonggi Prov., Yangju, Baekseok-eup, Gisan-ri, Aengmubong, 6.V 1979, 2 ex. (SAC), leg. S.M. Lee; Gangwon Prov., Inje-gun, Buk-myeon, Mt. Daeamsan, 28.VII 1988, 2 ex. (SAC), leg. S.L. An; Gangwon Prov., Inje-gun, Buk-myeon, Mt. Seoraksan, 27.VII 1982, 3 ex. (SAC), leg. Y.J. Kwon; Gangwon Prov., Jeongseon-gun, Gohan-eup, Mt. Hambaeksan, 37°9'46.40"N, 128°55'3.03"E, 6.VI 2006, 1 ex. (HCC), leg. H.W. Cho; Gangwon Prov., Chuncheon, Buksan-myeon, Mt. Obongsan, 12.V 1985, 3 ex. (SAC), leg. S.L. An; Gangwon Prov., Chuncheon, Nam-myeon, Gajeong-ri, 4.V 2006, 3 ex. (HCC), leg. H.W. Cho; Gangwon Prov., Pyeongchang-gun, Jinbu-myeon, Mt. Odaesan, 19.IX 1982, 2 ex. (SAC), leg. Y.J. Kwon; Gangwon Prov., Pyeongchang-gun, Jinbu-myeon, Mt. Odaesan, 8.V 2000, 4 ex. (SAC), leg. S.L. An; 1 ex. (SAC), same data as preceding one except for 9.V 2000; 4 ex. (SAC), same data as preceding one except for 30.VII 2000; Chungbuk Prov., Danyang-gun, Mt. Sobaeksan, 4.VI 1981, 1 ex. (SAC), leg. S.M. Lee; Gyeongbuk

Prov., Yeongyang-gun, Cheonggi-myeon, Mt. Irwolsan, 36°48'29.7"N, 129°05'23.7"E, 30.IV 2006, 33 ex. (HCC), leg. H.W. Cho; 1 ex. (HCC), same data as preceding one except for 3.VIII 2019; Gyeongbuk Prov., Yeongcheon, Hwabuk-myeon, Mt. Bohyeonsan, 29.V 1998, 1 ex. (SAC), leg. Y.J. Kwon; Gyeongbuk Prov., Chilgok-gun, Gasan-myeon, Mt. Palgongsan, 25.V 1982, 1 ex. (SAC), leg. Y.J. Kwon; Gyeongbuk Prov., Chilgok-gun, Gasan-myeon, Mt. Palgongsan, 28.VI 2000, 1 ex. (SAC), leg. S.L. An; Jeonbuk Prov., Namwon, Sannae-myeon, Mt. Jirisan, 28.VIII 1988, 1 ex. (SAC), leg. S.L. An; Jeonbuk Prov., Muju-gun, Seolcheon-myeon, Mt. Deogyusan, 28.V 1999, 1 ex. (SAC), leg. S.L. An.

**Genus *Xanthogaleruca* Laboissière, 1934**

292. *Xanthogaleruca aenescens* (Fairmaire, 1878) – S Korea.

COMMENTS. Reported from Jungsun County by Park *et al.* (2015).

293. *Xanthogaleruca maculicollis* (Motschulsky, 1854) (Fig. 79) – N & S Korea.

**Tribe Hylaspini Chapuis, 1875**

**Genus *Agelasa* Motschulsky, 1861**

294. *Agelasa nigriceps* Motschulsky, 1861 (Fig. 53) – N & S Korea.

**Genus *Agelastica* Chevrolat, 1836**

295. *Agelastica coerulea* Baly, 1874 (Fig. 54) – N & S Korea.

**Genus *Gallerucida* Motschulsky, 1861**

296. *Gallerucida bifasciata* Motschulsky, 1861 (Fig. 66) – N & S Korea.

297. *Gallerucida flavipennis* Solsky, 1872 (Fig. 67) – N & S Korea.

298. *Gallerucida gloriosa* (Baly, 1861) – N & S Korea.

299. *Gallerucida lutea* Gressitt et Kimoto, 1963 – S Korea.

**Genus *Morphosphaera* Baly, 1861**

300.\* *Morphosphaera japonica* (Hornstedt, 1788) – S Korea.

COMMENTS. New to Korea.

MATERIAL EXAMINED. **South Korea:** Jeju Prov., Seogwipo, Andeok-myeon, Andeok Valley, 21.IV 2004, 1 ex. (HCC), leg. T.W. Kim; Jeju Prov., Seogwipo, Sanghyo-dong, Donnaeko Valley, 20.V 2009, 1 ex. (HCC).

**Genus *Sphenoraia* Clark, 1865**

301.\* *Sphenoraia intermedia* Jacoby, 1885 – S Korea.

COMMENTS. New to Korea.

MATERIAL EXAMINED. **South Korea:** Gangwon Prov., Wonju, Sillim-myeon, Guhak-ri, 21.V 1998, 1 ex. (HCC), leg. G.H. Lee; Gangwon Prov., Chuncheon, Nam-myeon, Gajeong-ri, 4.V 2006, 3 ex. (HCC), leg. H.W. Cho; Gyeonggi Prov., Yangpyeong-gun, Okcheon-myeon, Mt. Yumyeongsan, 18.IV 1998, 1 ex. (HCC), leg. H.A. Lee; Gyeongbuk Prov., Mungyeong, Mungyeong-eup, Mungyeong Saejae, 36°46'03.1"N, 128°04'28.9"E, 21.IV 2007, 1 ex. (HCC), leg. H.W. Cho; Gyeongbuk Prov., Sangju, Ian-myeon, Acheon-ri, 36°33'59.46"N, 128°6'5.82"E, 2.IX 2018, 1 ex. (NNIBR), leg. G.A. Kim.

**Tribe Luperini Gistel, 1848**

**Genus *Aulacophora* Chevrolat, 1836**

302. *Aulacophora indica* (Gmelin, 1790) (Fig. 59) – N & S Korea.

COMMENTS. Including its synonymic name *A. femoralis* (Motschulsky, 1858).

303. *Aulacophora nigripennis nigripennis* Motschulsky, 1858 (Fig. 60) – S Korea.

**Genus *Atrachya* Chevrolat, 1836**

304. *Atrachya menetriesii* (Faldermann, 1835) – N & S Korea.

**Genus Charaea Baly, 1878**

305. *Charaea diadematum* (Ogloblin, 1936) – N Korea.  
306. *Charaea flaviventre* (Motschulsky, 1861) – N & S Korea.  
COMMENTS. Previously known as *Exosoma flaviventre* (Motschulsky, 1861).  
307. *Charaea minutum* (Joannis, 1865) – N & S Korea.  
308. *Charaea pseudominutum* Beenen et Warchalowski, 2010 – N Korea.

**Genus Cneorane Baly, 1865**

309. *Cneorane elegans* Baly, 1874 (Fig. 62) – N & S Korea.  
COMMENTS. Including *C. violaceipennis* Allard, 1889 as its synonym (Lee & Bezděk, 2013).

**Genus Doryscus Jacoby, 1887**

310. *Doryscus chujoi* Takizawa, 1978 – S Korea.  
COMMENTS. First reported from Palgongsan Mountain by Takizawa (1980). *Doryscus chujoi* was removed from synonymy with *D. testaceus* Jacoby, 1887 by Lee (2017).

**Genus Euliroetis Ogloblin, 1936**

311. *Euliroetis ornata* (Baly, 1874) – S Korea.

**Genus Fleutiauxia Laboissière, 1933**

312. *Fleutiauxia armata* (Baly, 1874) – N & S Korea.

**Genus Hesperomorpha Ogloblin, 1936**

- *Hesperomorpha taiwana* Kimoto, 1996 – Korea.

COMMENTS. *Hesperomorpha taiwana* is distributed only in Taiwan. The record from Korea by Löbl & Smetana (2010) is in error.

**Genus Hoplasoma Jacoby, 1884**

- *Hoplasoma unicolor* (Illiger, 1800)

COMMENTS. Recorded from Korea by Maulik (1936), but treated as suspect by Gressitt & Kimoto (1963), Lee & An (2001), and An (2011). Indeed, Korea is not included in the range of *H. unicolor* in Bezděk (2014). The record from Korea is probably in error.

**Genus Japonitata Strand, 1935**

- 313.? *Japonitata nigrita* (Jacoby, 1885) – N Korea.

COMMENTS. The only record from Kilju County by Kim (1993) is doubtful.

**Genus Luperus Geoffroy, 1762**

314. *Luperus kusanagii* Chûjô, 1941 – S Korea.  
315. *Luperus laricis laricis* Motschulsky, 1859 – N Korea.  
316. *Luperus semiflavus* Ogloblin, 1936 – N & S Korea.

**Genus Medythia Jacoby, 1887**

317. *Medythia nigrobilineata* (Motschulsky, 1861) (Fig. 71) – N & S Korea.

**Genus Monolepta Chevrolat, 1836**

318. *Monolepta dichroa* Harold, 1877 – S Korea.  
319. *Monolepta ogloblini* Papp, 1946 – N Korea.  
COMMENTS. Previously recorded under the homonymic name *M. nebulosa* Ogloblin, 1936.  
320. *Monolepta pallidula* (Baly, 1874) – N & S Korea.  
321. *Monolepta quadriguttata* (Motschulsky, 1860) – N & S Korea.  
322. *Monolepta shirozui* Kimoto, 1965 – N & S Korea.  
323. *Monolepta signata* (Olivier, 1808) – N & S Korea.

COMMENTS. Almost all records from Korea used the synonymic name *M. hieroglyphica* (Motschulsky, 1858).

**Genus *Paridea* Baly, 1886**

324. *Paridea angulicollis* (Motschulsky, 1854) (Fig. 75) – S Korea.

325. *Paridea oculata* Laboissière, 1930 – S Korea.

COMMENTS. Including its synonymic name *P. quadriplagiata* (Baly, 1874).

**Genus *Phyllobrotica* Chevrolat, 1836**

326. *Phyllobrotica signata* (Mannerheim, 1825) – S Korea.

**Genus *Scelolyperus* Crotch, 1874**

327. *Scelolyperus altaicus eous* (Ogloblin, 1936) – N Korea.

**Tribe Oidini Laboissière, 1921**

**Genus *Oides* Weber, 1801**

– *Oides bowringii* (Baly, 1863)

COMMENTS. Recorded from Korea without specimen data (Fairmaire, 1889; Ogloblin, 1936; Gressitt & Kimoto, 1963), but treated as suspect by Lee & An (2001), An (2011), and Lee & Beenen (2017). Here, we delete this species from the Korean list.

328. *Oides decempunctatus* (Billberg, 1808) (Fig. 73) – N & S Korea

**Subfamily Lamprosomatinae Lacordaire, 1848**

**Genus *Oomorphoides* Monrós, 1956**

329. *Oomorphoides cupreatus* (Baly, 1873) (Fig. 80) – N & S Korea.

330. *Oomorphoides nigrocaeruleus* (Baly, 1873) (Fig. 81) – N & S Korea.

**Subfamily Cryptocephalinae Gyllenhal, 1813**

**Tribe Clytrini Kirby, 1837**

**Genus *Clytra* Laicharting, 1781**

331. *Clytra arida* Weise, 1889 (Fig. 82) – N & S Korea.

COMMENTS. Previously misidentified as *C. laeviuscula* Ratzeburg, 1837.

332. *Clytra atraphaxidis asiatica* Chûjô, 1941 – N & S Korea.

**Genus *Coptocephala* Chevrolat, 1836**

333. *Coptocephala orientalis* Baly, 1873 (Fig. 83) – N & S Korea.

**Genus *Labidostomis* Chevrolat, 1836**

334. *Labidostomis amurensis* Heyden, 1884 (Fig. 90) – N & S Korea.

COMMENTS. Most records from Korea used the synonymic name *L. orientalis* Chûjô, 1940.

335. *Labidostomis chinensis* Lefèvre, 1887 – N & S Korea.

336. *Labidostomis crebrecollis* Medvedev, 1962 – N Korea.

337. *Labidostomis tjutschewi* Jacobson, 1902 – N Korea.

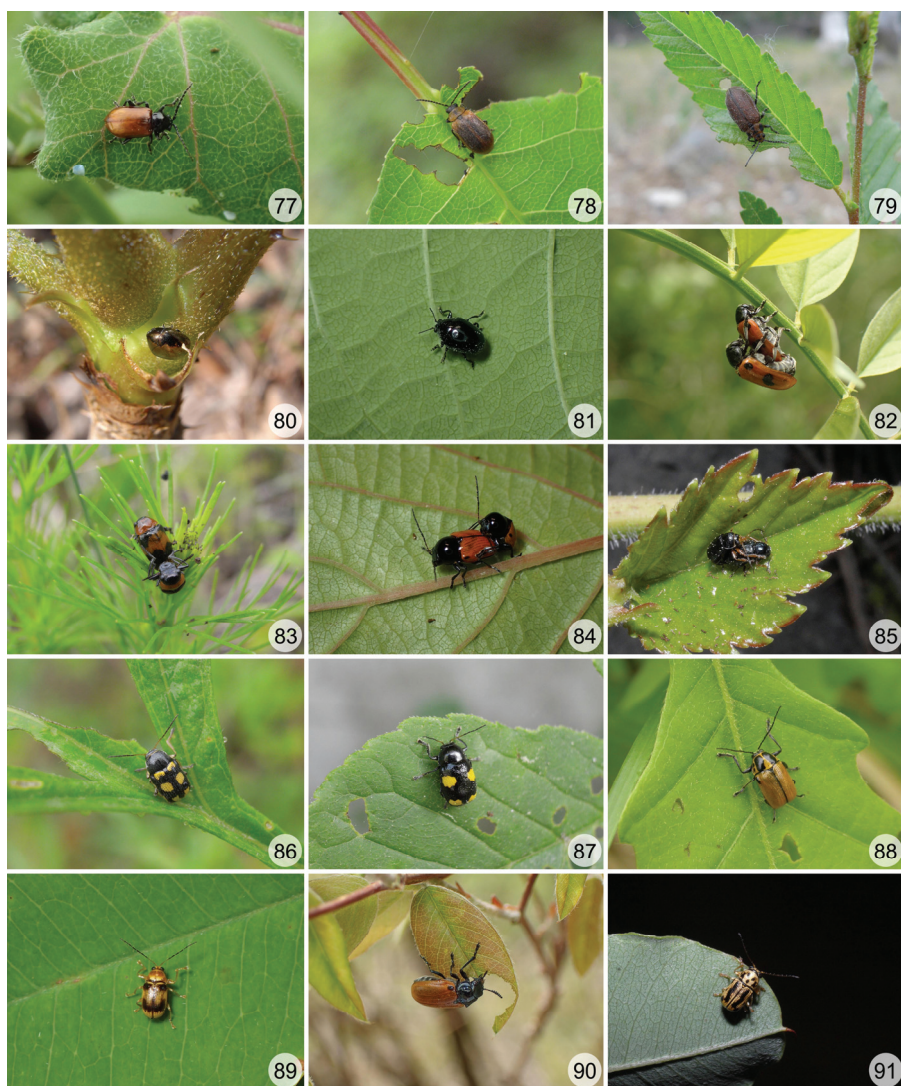
338. *Labidostomis urticarum urticarum* Frivaldszky, 1892 – N Korea.

COMMENTS. Most records from Korea used the synonymic name *L. bipunctata* (Mannerheim, 1825).

**Genus *Physauchenia* Lacordaire, 1848**

339. *Physauchenia pallens* (Lacordaire, 1848) – N & S Korea.

COMMENTS. Recorded under the synonymic name *Coptocephala bifasciata* Jacoby, 1888.



Figs 77–91. Galerucinae (77–79), Lamprosomatinae (80, 81) and Cryptocephalinae (82–91). 77 – *Phygasia fulvipennis*; 78 – *Tricholochmaea semifulva*; 79 – *Xanthogaleruca maculicollis*; 80 – *Oomorhoides cupreatus*; 81 – *O. nigrocaeruleus*; 82 – *Clytra arida*; 83 – *Coptocephala orientalis*; 84 – *Cryptocephalus bipunctatus cautus*; 85 – *C. confusus*; 86 – *C. koltzei koltzei*; 87 – *C. nobilis*; 88 – *C. peliopterus peliopterus*; 89 – *C. pseudopopuli*; 90 – *Labidostomis amurensis amurensis*; 91 – *Pachybrachis ochropygus*.

**Genus *Physosmaragdina* Medvedev, 1971**

340. *Physosmaragdina nigrifrons* (Hope, 1843) (Fig. 92) – N & S Korea.

**Genus *Smaragdina* Chevrolat, 1836**

341. *Smaragdina aurita hammarstroemi* (Jacobson, 1901) – N & S Korea.  
342. *Smaragdina golda* (Jacobson, 1925) – N & S Korea.  
343. *Smaragdina labilis sahlbergi* (Jacobson, 1901) – N & S Korea.  
344. *Smaragdina mandzhura* (Jacobson, 1925) – S Korea.  
345. *Smaragdina nipponensis* (Chûjô, 1951) – S Korea.  
COMMENTS. Recorded from Korea by Kwon *et al.* (1996).  
346. *Smaragdina obscuripes* (Weise, 1887) (Fig. 93) – N & S Korea.  
347. *Smaragdina semiaurantiaca* (Fairmaire, 1888) (Fig. 94) – N & S Korea.

**Tribe Cryptocephalini Gyllenhal, 1813**

**Genus *Coenobius* Suffrian, 1857**

348. *Coenobius obscuripennis* Chûjô, 1935 – S Korea.  
COMMENTS. Added from Namhae County by Lee *et al.* (2015).

**Genus *Cryptocephalus* Geoffroy, 1762**

349. *Cryptocephalus aeneoblitus* Takizawa, 1975 – S Korea.  
350. *Cryptocephalus bilineatus* (Linnaeus, 1767) – N & S Korea.  
351. *Cryptocephalus bipunctatus cautus* Weise, 1893 (Fig. 84) – N & S Korea.  
352. *Cryptocephalus coeruleans* Marseul, 1875 – N & S Korea.  
353. *Cryptocephalus confusus* Suffrian, 1854 (Fig. 85) – N & S Korea.  
354. *Cryptocephalus coryli* (Linnaeus, 1758) – N & S Korea.  
COMMENTS. New to South Korea.  
MATERIAL EXAMINED. **South Korea:** Gangwon Prov., Pyeongchang-gun, Jinbu-myeon, Mt. Odaesan, 12.VI 1997, 1 ex. (HCC), leg. M.G. Ahn.  
355. *Cryptocephalus elegantulus* Gravenhorst, 1807 – N & S Korea.  
COMMENTS. Recorded under the synonymic name *C. yangweii* Chen, 1942.  
356. *Cryptocephalus exiguus amicus* Baly, 1873 – N & S Korea.  
357. *Cryptocephalus flavoscutellaris* Medvedev, 1973 – N Korea.  
358. *Cryptocephalus fulvus fuscolineatus* Chûjô, 1940 – N & S Korea.  
359. *Cryptocephalus hirtipennis* Faldermann, 1835 – N & S Korea.  
COMMENTS. Most records from Korea used the synonymic name *C. yamadai* Chûjô, 1940.  
360. *Cryptocephalus hyacinthinus* Suffrian, 1860 – N & S Korea.  
COMMENTS. Including its synonymic names *C. approximatus* Baly, 1873 and *C. fortunatus* Baly, 1873.  
361. *Cryptocephalus koltzei koltzei* Weise, 1887 (Fig. 86) – N & S Korea.  
362. *Cryptocephalus kulibini kulibini* Gebler, 1832 – N & S Korea.  
363. *Cryptocephalus limbatipennis* Jacoby, 1885 – S Korea.  
364. *Cryptocephalus limbellus semenovi* Weise, 1889 – N & S Korea.  
365. *Cryptocephalus luridipennis pallescens* Kraatz, 1879 – N & S Korea.  
366. *Cryptocephalus mannerheimi* Gebler, 1825 – N Korea.  
367. *Cryptocephalus multiplex multiplex* Suffrian, 1860 – N & S Korea.  
368. *Cryptocephalus nigrofasciatus* Jacoby, 1885 – N & S Korea.  
– *Cryptocephalus nitidulus* Fabricius, 1787  
COMMENTS. The only record from Korea by An (2011) is probably in error.

369. *Cryptocephalus nobilis* Kraatz, 1879 (Fig. 87) – N & S Korea.  
 370. *Cryptocephalus ochroloma* Gebler, 1829 – N & S Korea.  
 371. *Cryptocephalus parvulus* Müller, 1776 – N & S Korea.  
 372. *Cryptocephalus peliopterus peliopterus* Solsky, 1872 (Fig. 88) – S Korea.  
 COMMENTS. Almost all records from Korea used the synonymic name *C. japonus* Baly, 1873.  
 373. *Cryptocephalus pini difformis* Jacoby, 1885 – N Korea.  
 374. *Cryptocephalus pseudopopuli* Schöller, 2011 (Fig. 89) – S Korea.  
 375. *Cryptocephalus pustulipes* Ménétriés, 1836 – N Korea.  
 376. *Cryptocephalus regalis regalis* Gebler, 1829 – N & S Korea.  
 377. *Cryptocephalus sagamensis* Tomov, 1982 – N & S Korea.  
 378. *Cryptocephalus sexpunctatus sexpunctatus* (Linnaeus, 1758) – N & S Korea.  
 COMMENTS. Recorded from Korea by Doi (1927), An & Kwon (1995), Lee & An (2001), and An (2011).  
 379. *Cryptocephalus splendens* Kraatz, 1879 – N Korea.  
 380. *Cryptocephalus tetradecaspilotus* Baly, 1873 – S Korea.  
 COMMENTS. First reported from Jeju Island by Komiya (1971).  
 381. *Cryptocephalus tetrathyrus* Solsky, 1872 – S Korea.  
 COMMENTS. Recorded several times under the synonymic name *C. amurensis* Heyden, 1884.

**Genus *Pachybrachis* Chevrolat, 1836**

382. *Pachybrachis amurensis* Medvedev, 1973 – N & S Korea.  
 383. *Pachybrachis distictopygus* (Jacobson, 1901) – S Korea.  
 384.? *Pachybrachis eruditus* (Baly, 1873) – N Korea.  
 COMMENTS. The only records from Kilju, Paegam, and Taehongdan Counties by Kim (1993) should be confirmed with recent material.]  
 385. *Pachybrachis lopatini* Medvedev et Rybakova, 1980 – N & S Korea.  
 COMMENTS. New to South Korea.  
 MATERIAL EXAMINED. **South Korea:** Gangwon Prov., Chuncheon, Nam-myeon, Balsan-ri, 29.VI 1998, 11 ex. (HCC), leg. H.C. Park.  
 386. *Pachybrachis ochropygus* (Solsky, 1872) (Fig. 91) – N & S Korea.  
 387. *Pachybrachis scriptidorsum* Marseul, 1875 – N & S Korea.

**Tribe Fulcidacini Jacobson, 1924**

**Genus *Chlamisus* Rafinesque, 1815**

388. *Chlamisus diminutus* (Gressitt, 1942) – S Korea.  
 389. *Chlamisus pubiceps* (Chûjô, 1940) – N & S Korea.  
 390. *Chlamisus spilotus* (Baly, 1873) – S Korea.

**Subfamily Eumolpinae Hope, 1840**

**Tribe Bromiini Chapuis, 1874**

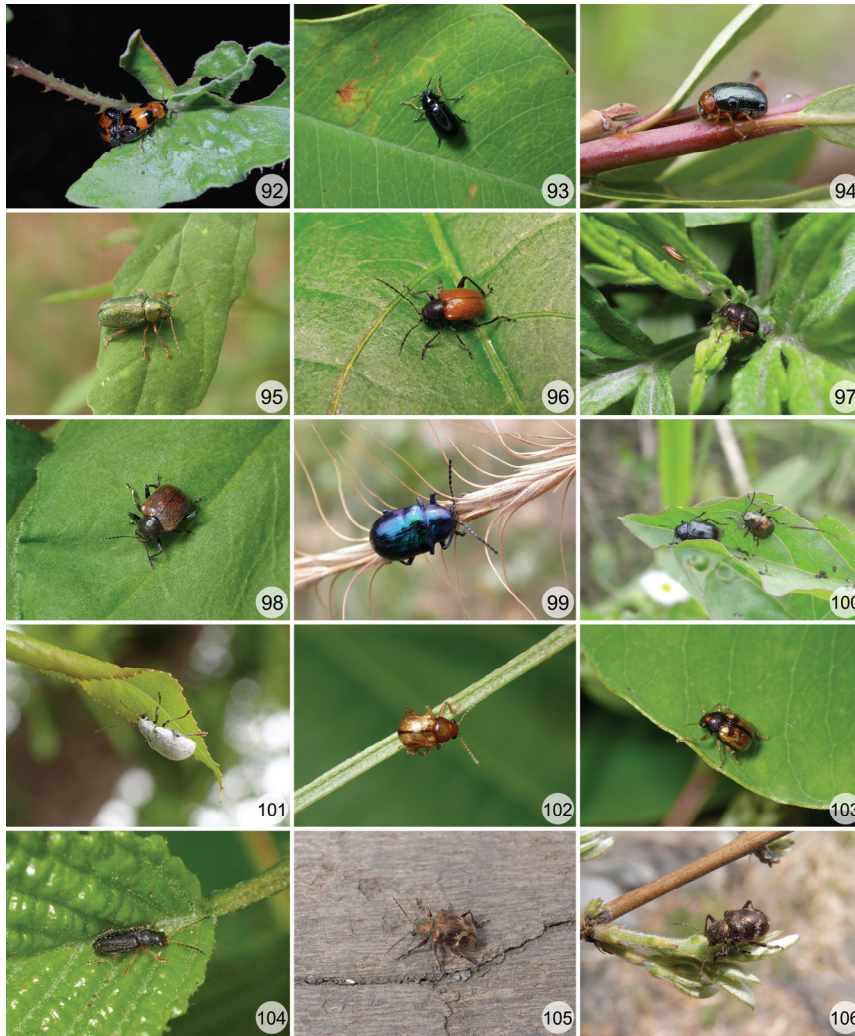
**Genus *Acrothinium* Marshall, 1865**

391. *Acrothinium gaschkevitchii gaschkevitchii* (Motschulsky, 1861) – S Korea.

**Genus *Aoria* Baly, 1863**

392. *Aoria rufotestacea* Fairmaire, 1889 – N & S Korea.  
 393.\* *Aoria scutellaris* Pic, 1923 (Fig. 96) – S Korea.  
 COMMENTS. New to Korea. Previously misidentified as *Bromius obscurus* by Lee & An (2001), Lee & Cho (2006), and An (2011).





Figs 92–106. Cryptocephalinae (92–94) and Eumolpinae (95–106). 92 – *Physosmaragdina nigrifrons*; 93 – *Smaragdina obscuripes*; 94 – *S. semiaurantiaca*; 95 – *Abiromorphus anceyi*; 96 – *Aoria scutellaris*; 97 – *Basilepta fulvipes*; 98 – *Bromius obscurus*; 99 – *Chrysochus chinensis*; 100 – *Colasposoma dauricum*; 101 – *Lypesthes ater*; 102 – *Pagria consimilis*; 103 – *P. ussuriensis*; 104 – *Syneta adamsi*; 105 – *Trichochrysea chejudoana*; 106 – *T. japana*.

MATERIAL EXAMINED. **South Korea:** Gangwon Prov., Goseong-gun, Geojin-eup, Geonbongsa, 22.V 1992, 1 ex. (HCC), leg. H.C. Park; Gyeonggi Prov., Uiwang, Cheonggye-dong, Mt. Cheonggyesan, 1.VI 2008, 2 ex. (HCC), leg. H.W. Cho; Gyeonggi Prov., Paju, Gwangtan-myeon, Mt. Goryeongsan, 12.VI 1977, 1 ex. (HCC), leg. S.J. Oh; Gyeongbuk Prov., Gyeongju, Geoncheon-eup, Mt. Danseoksan, 35°47'44.16"N, 129°4'41.45"E, 2.VI 2010, 8 ex. (HCC), leg. H.W. Cho; Gyeongbuk Prov., Gunwi-gun, Bugye-myeon, Mt. Palgongsan, 36°01'37.2"N, 128°41'49.8"E, 13.VII 2019, 2 ex. (HCC), leg. H.W. Cho.

**Genus *Bromius* Chevrolat, 1836**

394. *Bromius obscurus* (Linnaeus, 1758) (Fig. 98) – N & S Korea.

COMMENTS. This species was deleted from the Korean list by An *et al.* (2014), but has been collected from several localities in Gangwon Province by the first author.

MATERIAL EXAMINED. **South Korea:** Gangwon Prov., Gangneung, Seongsan-myeon, Eoheul-ri, Daegwallyeong, 37°41'12.5"N, 128°45'37.5"E, 27.V 2018, 1 ex. (HCC), leg. H.W. Cho; Gangwon Prov., Jeongseon-gun, Gohan-eup, Geumdaebong, 37°12'41.1"N, 128°54'56.9"E, 1.VI 2018, 1 ex. (HCC), leg. H.W. Cho; Gangwon Prov., Pyeongchang-gun, Jinbu-myeon, Mt. Odaesan, 37°47'34.0"N, 128°33'39.7"E, 31.V 2006, 1 ex. (HCC), leg. H.W. Cho; Gangwon Prov., Hoengseong-gun, Dunnae-myeon, Sapgyo-ri, 37°32'09.7"N, 128°17'18.6"E, 20.V 2010, 2 ex. (HCC), leg. H.W. Cho.

**Genus *Demotina* Baly, 1863**

395.\* *Demotina decorata* Baly, 1874 – S Korea.

COMMENTS. New to Korea.

MATERIAL EXAMINED. **South Korea:** Gyeonggi Prov., Yongin, Yongin-eup, 16.IX 1988, 4 ex. (SAC), leg. S.L. An & S.W. Cho; Gyeongbuk Prov., Chilgok-gun, Gasan-myeon, Mt. Palgongsan, 19.VI 1985, 1 ex. (SAC), leg. Y.J. Kwon.

396. *Demotina fasciata* Baly, 1874 – S Korea.

397. *Demotina fasciculata* Baly, 1874 – S Korea.

398. *Demotina modesta* Baly, 1874 – S Korea.

399. *Demotina pseudoimasakai* Park, 2013 – S Korea.

COMMENTS. This species was described from Pyeongchang County based on a female by Park *et al.* (2013a).

**Genus *Heteraspis* Chevrolat, 1836**

400. *Heteraspis lewisii* (Baly, 1874) – N & S Korea.

**Genus *Lypesthes* Baly, 1863**

401. *Lypesthes ater* (Motschulsky, 1861) (Fig. 101) – N & S Korea.

402. *Lypesthes fulvus* (Baly, 1878) – S Korea.

403.\* *Lypesthes japonicus* Ohno, 1958 – S Korea.

COMMENTS. New to Korea.

MATERIAL EXAMINED. **South Korea:** Jeonnam Prov., Mt. Wolchulsan, 17.VII 1999, 1 ex. (SAC), leg. S.L. An.

404.? *Lypesthes lewisi* (Baly, 1878) – N Korea.

COMMENTS. The only record from Taehongdan County by Kim (1993) is doubtful and should be confirmed with recent material.

**Genus *Pachnephorus* Chevrolat, 1836**

405. *Pachnephorus lewisi* Baly, 1878 – N Korea.

COMMENTS. Recorded from Pyongyang and Chongjin by Gruev (1978) under the synonymic name *P. brettinghami* Baly, 1878.

406. *Pachnephorus porosus* Baly, 1878 – N & S Korea.

**Genus *Trichochrysea* Baly, 1861**

407. *Trichochrysea chejudoana* **Komiya, 1985** (Fig. 105) – S Korea.

COMMENTS. The species is distributed only on Jeju Island.

408. *Trichochrysea japana* (**Motschulsky, 1858**) (Fig. 106) – S Korea.

**Genus *Xanthonia* Baly, 1863**

409.\* *Xanthonia placida* **Baly, 1874** – S Korea.

COMMENTS. New to Korea.

MATERIAL EXAMINED. **South Korea:** Gyeonggi Prov., Namyangju, Sudong-myeon, Mt. Chungnyungsan, 10.VIII 1999, 3 ex. (HCC), leg. Kim *et al.*; Chungbuk Prov., Danyang-gun, Daegang-myeon, Olsan-ri, 36°48'06.1"N, 128°22'07.3"E, 26.VII 2018, 2 ex. (HCC), leg. H.W. Cho; Jeonbuk Prov., Wanju-gun, Unju-myeon, Mt. Daedunsan, 9.VII 2000, 1 ex. (HCC), leg. H.C. Park.

**Tribe Eumolpini Hope, 1840**

**Genus *Abiromorphus* Pic, 1924**

410. *Abiromorphus anceyi* **Pic, 1924** (Fig. 95) – N & S Korea.

**Genus *Abirus* Chapuis, 1874**

411. *Abirus fortunei* (**Baly, 1861**) – N Korea.

**Genus *Chrysochus* Chevrolat, 1836**

412. *Chrysochus chinensis* **Baly, 1859** (Fig. 99) – N & S Korea.

**Genus *Colaspoides* Laporte, 1833**

413. *Colaspoides chinensis* **Jacoby, 1888** – N Korea.

**Genus *Platycorynus* Chevrolat, 1836**

414. *Platycorynus parryi* (**Baly, 1864**) – Korea.

**Tribe Euryopini Chapuis, 1874**

**Genus *Colasposoma* Laporte, 1833**

415. *Colasposoma dauricum* **Mannerheim, 1849** (Fig. 100) – N & S Korea.

**Tribe Nodinini Chen, 1940**

**Genus *Basilepta* Baly, 1860**

416. *Basilepta davidi* (**Lefèvre, 1877**) – S Korea.

417. *Basilepta fulvipes* (**Motschulsky, 1860**) (Fig. 97) – N & S Korea.

418. *Basilepta hirayamai* (**Chûjô, 1935**) – S Korea.

419. *Basilepta pallidula* (**Baly, 1874**) – N & S Korea.

420. *Basilepta punctifrons* **An, 1988** – S Korea.

**Genus *Cleoporus* Lefèvre, 1884**

421. *Cleoporus lateralis* (**Motschulsky, 1866**) – N & S Korea.

COMMENTS. Almost all records from Korea used the synonymic name *C. variabilis* (Baly, 1874).

**Genus *Pagria* Lefèvre, 1884**

422. *Pagria consimilis* (**Baly, 1874**) (Fig. 102) – S Korea.

COMMENTS. Previously misidentified as *P. signata* (Motschulsky, 1858).

423. *Pagria ussuriensis* **Moseyko et Medvedev, 2005** (Fig. 103) – N & S Korea.

COMMENTS. Previously misidentified as *P. signata* (Motschulsky, 1858).

**Tribe Synetini LeConte & Horn, 1883**

**Genus *Syneta* Chevrolat, 1837**

424. *Syneta adamsi* Baly, 1877 (Fig. 104) – N & S Korea.

**ACKNOWLEDGMENTS**

We thank Haechul Park (National Institute of Agricultural Science, Jeonju, South Korea) and Mi-Jin Lee (Baekdudaegan National Arboretum, Bonghwa, South Korea) for providing specimens. Lev N. Medvedev (Russian Academy of Sciences, Moscow, Russia) and Klaus-Werner Anton (Emmendingen, Germany) kindly confirmed the identification of *Aoria scutellaris* and *Bruchus brachialis*, respectively. Alexander S. Konstantinov (USDA, Washington DC, USA) provided a valuable comment on *Chaetocnema discreta*. Jan Bezděk (Mendel University, Brno, Czech Republic) and Matthias Schöller (Biologische Beratung, Berlin, Germany) provided valuable corrections and suggestions on the manuscript. This work was supported by a research project of the Nakdonggang National Institute of Biological Resources (NNIBR-2019-01102).

**REFERENCES**

- An, S.L. 2011. *Leafbeetle of Korea (Coleoptera: Chrysomelidae)*. National Science Museum, Seoul, 548 pp.
- An, S.L. 2019. Two new records of the subfamily Donaciinae (Coleoptera, Chrysomelidae) from Korea. *Journal of Asia-Pacific Biodiversity*, 12: 63–65. DOI: 10.1016/j.japb.2018.11.005
- An, S.L., Hong, C.-K., Kim, S., Lee, S. & Cho, S. 2014. *Aoria rufotestacea* Faimaire (Coleoptera: Chrysomelidae) long been confused as *Bromius obscurus* (Linnaeus) in Korea. *Entomological Research*, 44: 80–85. DOI: 10.1111/1748-5967.12052
- An, S.L. & Kwon, Y.J. 1995. A check list of Chrysomelidae from Chejudo (Coleoptera). *Insecta Koreana Supplement*, 5: 91–124.
- Bezděk, J. 2014. A revision of *Hoplasoma acuminatum* and *H. thailandicum* species groups, and re-definition of *H. unicolor* species group (Coleoptera: Chrysomelidae: Galerucinae). *Zootaxa*, 3794: 419–434. DOI: 10.11646/zootaxa.3794.3.5
- Bieńkowski, A.O. 2001. A study on the genus *Chrysolina* Motschulsky, 1860, with a checklist of all the described subgenera, species, subspecies, and synonyms (Coleoptera: Chrysomelidae: Chrysomelinae). *Genus*, 12: 105–235.
- Bieńkowski, A.O. 2007. *A monograph of the genus Chrysolina Motschulsky, 1860 (Coleoptera: Chrysomelidae) of the world. Part 1*. Techpolygraphcentre Publ., Moscow, 417 pp.
- Borowiec, L. & Cho, H.-W. 2011. On the subgenus *Lasiocassis* Gressitt (Coleoptera: Chrysomelidae: Cassidinae), with description of a new species from South Korea. *Annales Zoologici (Warszawa)*, 61: 445–451. DOI: 10.3161/000345411x603319
- Bukejs, A. 2009. To the knowledge of flea beetles (Coleoptera: Chrysomelidae: Alticinae) of the fauna of Latvia. 3. Genera *Neocrepidodera* Heikertinger, 1911 and *Crepidodera* Chevrolat, 1836. *Acta Zoologica Lituanica*, 19: 109–119. DOI: 10.2478/v10043-009-0011-x

- Chen, S.H. 1934. On some species of Chrysomelidae (Col.) in the British Museum. *Stylops*, 3: 66–72. DOI: 10.1111/j.1365-3113.1934.tb01547.x
- Chen, S.H. 1936. The chrysomelid genus *Ambrostoma* Motsch. *Sinensia*, 7: 713–729.
- Cho, H.-W. & Borowiec, L. 2013. A new species of the genus *Ambrostoma* Motschulsky (Coleoptera, Chrysomelidae, Chrysomelinae) from South Korea, with larval descriptions and biological notes. *ZooKeys*, 321: 1–13. DOI: 10.3897/zookeys.321.4972
- Cho, H.-W. & Borowiec, L. 2014. Three *Cassida* species new to South Korea, with additional faunistic data and key to all Korean species (Coleoptera: Chrysomelidae: Cassidinae). *Genus*, 25: 481–492.
- Cho, H.-W. & Lee, J.E. 2010. *Gonioctena koryoensis* (Coleoptera: Chrysomelidae: Chrysomelinae), a new species from Korea, with a description of immature stages. *Zootaxa*, 2438: 52–60. DOI: 10.11646/zootaxa.2438.1.3
- Cho, P.-S. 1934. Butterflies and beetles collected at Mt. Kwanmo and its vicinity. *The Journal of Chosen Natural History Society*, 17: 69–85.
- Cho, P.-S. 1965. Historical review of the chrysomelid-beetles from Korea. *Journal of Science and Technology, Korea University*, 7: 93–131.
- Chûjô, M. 1940a. Chrysomelid-beetles from Korea (I). *Transactions of the Natural History Society of Formosa*, 30: 349–362.
- Chûjô, M. 1940b. Chrysomelid-beetles from Korea (II). *Transactions of the Natural History Society of Formosa*, 30: 383–398.
- Chûjô, M. 1941a. Chrysomelid-beetles from Korea (III). *Transactions of the Natural History Society of Formosa*, 31: 61–75.
- Chûjô, M. 1941b. Chrysomelid-beetles from Korea (IV). *Transactions of the Natural History Society of Formosa*, 31: 155–174.
- Chûjô, M. 1941c. Chrysomelid-beetles from Korea (V). *Transactions of the Natural History Society of Formosa*, 31: 232–236.
- Chûjô, M. 1941d. First supplement to the fauna of Korean chrysomelid-beetles (I). *Transactions of the Natural History Society of Formosa*, 31: 451–462.
- Chûjô, M. 1942. First supplement to the fauna of Korean chrysomelid-beetles (II). *Transactions of the Natural History Society of Formosa*, 32: 31–43.
- Döberl, M. 2007. Beitrag zur Kenntnis der Gattung *Hemipyxis* Dejean, 1836 – die Arten der indo-malayischen Region mit Einschluß der ostpaläarktischen Arten (Coleoptera: Chrysomelidae: Alticinae) 1. Teil. *Russian Entomological Journal*, 16: 79–99.
- Doi, H. 1927. The study of Korean Chrysomelidae. *Doubutsugaku Zasshi*, 39: 323–339.
- Fairmaire, L. 1889. Coléoptères de l'intérieur de la Chine, 5e partie. *Annales de la Société Entomologique de France*, 9: 5–84.
- Gressitt, J.L. & Kimoto, S. 1961. The Chrysomelidae (Coleopt.) of China and Korea, Part 1. *Pacific Insects Monograph*, 1A: 1–299.
- Gressitt, J.L. & Kimoto, S. 1963. The Chrysomelidae (Coleopt.) of China and Korea, Part 2. *Pacific Insects Monograph*, 1B: 300–1026.
- Gruev, B. 1978. A contribution to the knowledge of the Korean fauna of Chrysomelidae (Coleoptera). *Entomological Review of Japan*, 32: 49–59.
- Gruev, B. & Döberl, M. 2005. *General distribution of the flea beetles in the Palaearctic subregion (Coleoptera, Chrysomelidae: Alticinae)*. Supplement. Pensoft, Sofia, 239 pp.
- Hayashi, M. & Cho, H.-W. 2017. Occurrence of *Plateumaris weisei* (Duvivier) (Coleoptera, Chrysomelidae, Donaciinae) in South Korea. *Elytra, Tokyo, New Series*, 7: 233–234.
- Heikertinger, F. 1924. Die Halticinengenera der Palaearktis und Nearktis. Bestimmungstabellen. (Monographie der palaearktischen Halticinen: Systematischer Teil. – Zweites Stück.). *Koleopterologische Rundschau*, 11: 25–48.

- Heinze, E. 1943. Über bekannte und neue Criocerinen. (29. Beitrag zur Kenntnis der Criocerinen [Col., Chrysomel.]). *Stettiner Entomologische Zeitung*, 104: 101–109.
- Heyden, L. 1887. Verzeichniss der von Herrn Otto Herz aus der chinesischen Halbinsel Korea gesammelten Coleopteren. *Horae Societatis Entomologicae Rossicae*, 21: 243–273.
- Jolivet, P. 1973. Essai d'analyse écologique de la faune Chrysomélidienne de la Corée. *Cahiers du Pacifique*, 17: 253–288.
- Kang, M.H., Park, J. & Lee, J.E. 2013. First record of the genus *Hyphasis* Harold (Coleoptera: Chrysomelidae: Alticinae) in Korea. *Journal of Asia-Pacific Entomology*, 16: 293–295. DOI: 10.1016/j.aspen.2013.03.007
- Kim, J.L. 1993. *A series book on Baekdusan Mountain: Animals*. Science & Technology Publishing, Pyeongyang, 391 pp.
- Kimoto, S. 1965. The Chrysomelidae of Japan and the Ryukyu Islands. IX. Subfamily Alticinae II. *Journal of the Faculty of Agriculture, Kyushu University*, 13: 431–459.
- Kimoto, S. 2005. Systematic catalog of the Chrysomelidae (Coleoptera) from Nepal and Bhutan. *Bulletin of the Kitakyushu Museum of Natural History and Human History, Series A*, 3: 13–114.
- Kimoto, S. & Takizawa, H. 1981. Chrysomelid-beetles of Nepal, collected by the Hokkaido University scientific expeditions to Nepal Himalaya, 1968 and 1975. Part III (Coleoptera). *Entomological Review of Japan*, 35: 51–65.
- Kimoto, S. & Takizawa, H. 1994. *Leaf beetles (Chrysomelidae) of Japan*. Tokai University Press, Tokyo, 539 pp.
- Ko, W. & Choi, J.S. 2006. *Biological species and distribution in Changbai Mountain: Animals*. Northeast Normal University Press, Changchun, 452 pp.
- Komiya, K. 1971. Report on the survey of Insects, IX. In: Report on the academic survey to Is. Chejudo, Republic of Korea. *Research Bulletin of the Plant Protection Service, Japan*, 14: 59–67.
- Konstantinov, A.S. 1996. Review of Palearctic species of *Crepidodera* Chevrolat (Coleoptera, Chrysomelidae, Alticinae). *Spixiana*, 19: 21–37.
- Konstantinov, A.S. 2011. *Revision of the Palearctic Chaetocnema species (Coleoptera: Chrysomelidae: Galerucinae: Alticini)*. Pensoft Publishers, Sofia-Moscow, 363 pp.
- Kwon, Y.J., Lee, J.H., Suh, S.J., An, S.L., Huh, E.Y. & Yeo, Y.S. 1996. III. Invertebrate 2 (insects and spiders). P. 93–292. In: Lee, I.K. (Ed.). *List of biological species from Korea*. Korean National Council for Conservation of Nature, Seoul.
- Lee, C.-F. 2017. Revision of the genus *Doryscus* Jacoby (Coleoptera: Chrysomelidae: Galerucinae). *Zootaxa*, 4269: 1–43. DOI: 10.11646/zootaxa.4269.1.1
- Lee, C.-F. & Beenen, R. 2017. Revision of the Palearctic and Oriental species of the genus *Oides* Weber, 1801 (Coleoptera: Chrysomelidae: Galerucinae). *Zootaxa*, 4346: 1–125. DOI: 10.11646/zootaxa.4346.1.1
- Lee, C.-F. & Bezděk, J. 2013. The genus *Cneorane* Baly, 1865 from Taiwan (Coleoptera: Chrysomelidae: Galerucinae), with notes on sexual dimorphism and its life history. *Zoological Studies*, 52: 9. DOI: 10.1186/1810-522x-52-9
- Lee, J.E. & An, S.L. 2001. *Family Chrysomelidae. Economic Insects of Korea 14. Insecta Koreana Supplement 21*. National Institute of Agricultural Science and Technology, Suwon, 231 pp.
- Lee, J.E. & Cho, H.-W. 2006. *Leaf beetles in the crops (Coleoptera: Chrysomelidae). Economic Insects of Korea 27. Insecta Koreana Supplement 34*. National Institute of Agricultural Science and Technology, Suwon, 130 pp.

- Lee, M.J., Kwon, H.Y. & Lee, J.E. 2015. Ten species of the nine coleopteran families recorded from the Korean indigenous species survey of the National Institute of Biological Resources (2014). *Entomological Research Bulletin*, 31: 186–192.
- Lee, M.J. & Lee, J.E. 2014. A catalog of the eight coleopteran families recorded from the Korean indigenous species survey of the National Institute of Biological Resources (2011–2013). *Entomological Research Bulletin*, 30: 118–123.
- Leschen, R.A.B. & Beutel, R.G. 2014. *Handbook of Zoology, Arthropoda: Insecta: Coleoptera, Beetles, Volume 3: Morphology and systematics (Phytophaga)*. Walter de Gruyter, Berlin/Boston, 675 pp.
- Löbl, I. & Smetana, A. 2010. *Catalogue of Palaearctic Coleoptera, Volume 6. Chrysomeloidea*. Apollo Books, Stenstrup, 924 pp.
- Maulik, S. 1936. *The Fauna of British India, including Ceylon and Burma. Coleoptera. Chrysomelidae (Galerucinae)*. Taylor and Francis, London, 648 pp.
- Medvedev, L.N. 2006. To the knowledge of Chrysomelidae (Coleoptera) described by V. Motschulsky. *Russian Entomological Journal*, 15: 409–417.
- Medvedev, L.N. 2012. To the knowledge of the genera *Mandarella* Duvivier and *Stenoluperus* Ogloblin (Insecta: Chrysomelidae: Alticinae) from the Himalayas. P. 423–427. In: Hartmann, M. & Weipert, J. (Eds). *Biodiversität und Naturlausstattung im Himalaya IV*. Verein der Freunde & Förderer des Naturkundemuseums Erfurt e.V., Erfurt.
- Mochizuki, M. & Tsunekawa, W. 1937. A list of Coleoptera from Middle-Korea. *The Journal of Chosen Natural History Society*, 22: 75–93.
- Nadein, K. & Lee, C.-F. 2012. New data about some Alticini from Taiwan with descriptions of two new species (Coleoptera: Chrysomelidae). *Bonn Zoological Bulletin*, 61: 41–48.
- Ogloblin, D.A. 1936. *Listoedy, Galerucinae. Fauna SSSR. Nasekomye Zhestkokrylye, n. s. 8, 26 (1)*. Izdatel'stvo Akademii Nauk SSSR, Moscow-Leningrad, 455 pp.
- Park, J., Cha, J.Y., Choi, I.J. & Park, J.K. 2015. Note on the genus *Xanthogaleruca* (Coleoptera: Chrysomelidae: Galerucinae) in Korea, with a newly recorded species. *Journal of Asia-Pacific Biodiversity*, 8: 388–389. DOI: 10.1016/j.japb.2015.09.005
- Park, J., Lee, J.E. & Park, J.K. 2013a. A new species of the genus *Demotina* Baly (Coleoptera: Chrysomelidae: Eumolpinae) from Korea. *Entomological Research Bulletin*, 29: 116–118.
- Park, J., Lee, J.E. & Park, J.K. 2013b. A new species of the genus *Phyllotreta* Chevrolat (Coleoptera: Chrysomelidae: Alticinae) from Korea. *Entomological Research Bulletin*, 29: 119–123.
- Park, J.K., Park, J., Choi, I.J. & Choi, E.Y. 2014. A catalog of the beetles (Coleoptera) recorded from the Korean indigenous species survey of the National Institute of Biological Resources (2011–2013). *Entomological Research Bulletin*, 30: 100–103.
- Reid, C.A.M. & Beatson, M. 2015. Disentangling a taxonomic nightmare: a revision of the Australian, Indomalayan and Pacific species of *Altica* Geoffroy, 1762 (Coleoptera: Chrysomelidae: Galerucinae). *Zootaxa*, 3918: 503–551. DOI: 10.11646/zootaxa.3918.4.3
- Schöller, M. 2011. *Cryptocephalus (Burlinius) pseudopopuli* n. sp. from South Korea (Coleoptera: Chrysomelidae: Cryptocephalinae). *Mitteilungen Internationaler Entomologischer Verein*, 36: 25–32.
- Takizawa, H. 1980. Notes on Korean Chrysomelidae. *Nature and Life (Kyungpook Journal of Biological Sciences)*, 10: 1–13.
- Takizawa, H. 1985. Notes on Korean Chrysomelidae, part 2. *Nature and Life (Kyungpook Journal of Biological Sciences)*, 15: 1–18.

- Takizawa, H. 1988. Chrysomelid beetles of Nepal, collected by the Hokkaido University scientific expeditions to Nepal Himalaya Part IV (Coleoptera: Chrysomelidae). *Entomological Review of Japan*, 43: 1–16.
- Warchałowski, A. 2010. *The Palaearctic Chrysomelidae. Identification keys. Volume 1.* Natura Optima Dux Foundation, Warszawa, 629 pp.
- Winkler, A. 1930. Pars 11. P. 1265–1392. *In*: Winkler, A. (Ed.). *Catalogus Coleopterorum regionis palaearticae [1924–1932]*. Albert Winkler, Wien.

---

© **Far Eastern entomologist (Far East. entomol.)** Journal published since October 1994.  
Editor-in-Chief: S.Yu. Storozhenko  
Editorial Board: A.S. Lelej, S.A. Belokobylskij, M.G. Ponomarenko, E.A. Beljaev, V.A. Mutin,  
E.A. Makarchenko, A.V. Gorochoy, T.M. Tiunova, M.Yu. Proshchalykin, S.A. Shabalin  
Address: Federal Scientific Center of the East Asia Terrestrial Biodiversity (former Institute  
of Biology and Soil Science), Far East Branch of the Russian Academy of Sciences,  
690022, Vladivostok-22, Russia.  
E-mail: storozhenko@biosoil.ru                      web-site: <http://www.biosoil.ru/fee>